

# APSE Building and Housing Advisory Group

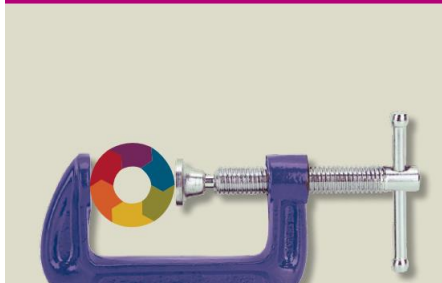
24 August 2017

- 17-30 Updating of the School Premises (General Requirements and Standards) (Scotland) Regulations 1967 Consultation
- 17-27 Scottish Government Socio-Economic Duty Consultation
- 17-21 Abolition of the Right to Buy and Associated Rights (Wales) Bill
- 17-19 Local Government in Scotland – Performance & Challenges 2017 (Accounts Commission Report)
- 17-12 The Housing White Paper
- 17-11 Household Projections for Scotland, 2014 to 2039 (National Records of Scotland)
- 17-05 Loss of social homes for rent
- 17-03 Local government in Scotland – Financial overview 2015/16
- 17-02 Trend Analysis 2015/16 Building Maintenance

# Research

[www.apse.org.uk](http://www.apse.org.uk)

**Working at the  
frontline of austerity**  
The Ensuring Council and  
Workforce Planning



**Redefining  
neighbourhoods:**  
A future beyond austerity?



**The engine of the council?**  
Evaluating frontline productivity in local government



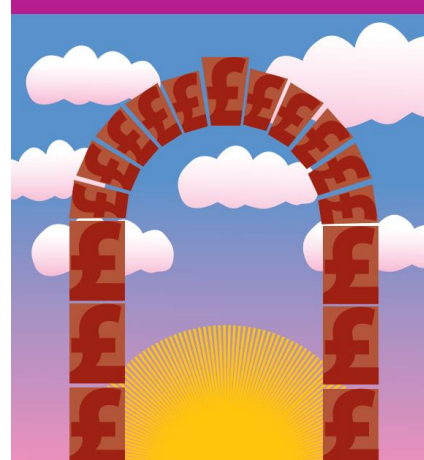
**Building homes,  
creating communities**  
Ensuring councils provide innovative solutions to  
meeting housing need



**Work it out**  
Creating Local Systems of Employability Support



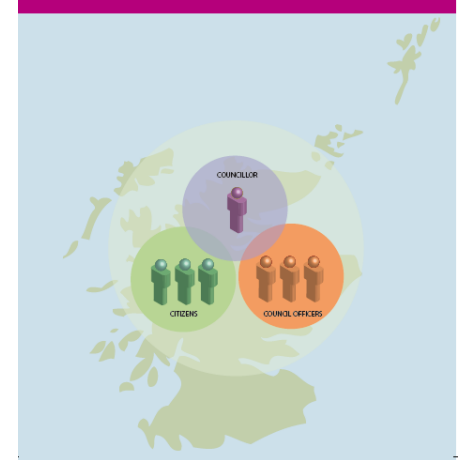
**Bricks-Mortar-Money**  
Property investment as a potential means of securing  
an additional and sustainable source of revenue



**apse** **Survation.**  
**Neighbourhood services poll**  
Survation on behalf of APSE



**Doing local politics  
in Scotland**  
Councillors, officers and communities



# Latest Research (1)

## Doing local politics in Scotland

Councillors, officers and communities

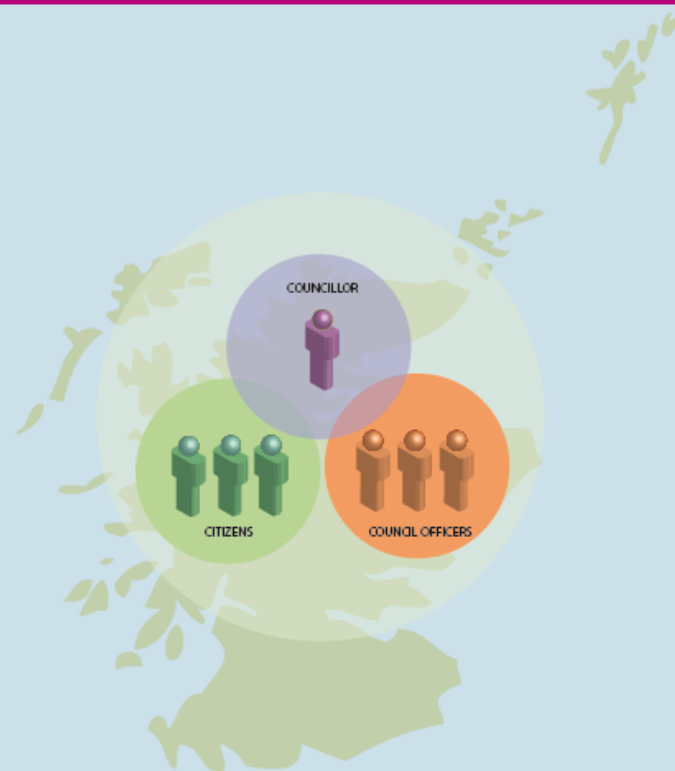
This report contributes to current debates over the future of local democracy in Scotland. It draws attention to what it takes to do local politics, and to the everyday practices of local decision-making. What is it that local councillors do when they go about their work? How do officers understand their role and engage within and beyond the council? And how do communities connect with local councils and interact with councillors and officers? Having a better understanding of these questions provides us with the necessary grasp of the everyday practices of local politics with which to formulate alternative visions for the future.

[Click here to read online.](#)



## Doing local politics in Scotland

Councillors, officers and communities



# Latest Research (2)

**Bricks-Mortar-Money:** Property investment as a potential means of securing an additional and sustainable source of revenue

A new report by APSE and the Chartered Institute of Public Finance and Accountancy (CIPFA), shows that an increasing number of local authorities are acquiring property for investment purposes to plug the funding gaps created by ongoing austerity in local government. The report shows that significant changes to funding for local authorities has led to many councils searching for new sources of revenue to supplement their income and balance the books. This increase in property investment highlights that councils throughout the UK are concerned that they will potentially be left with a shortfall in their revenue budgets, on top of the reduction in real terms that they are already experiencing. [Click here to read online.](#)





# Latest Research (3)

## Building homes, creating communities

Ensuring councils provide innovative solutions to meeting housing need

Published by APSE and written and researched by the Town and County Planning Association, this report finds that UK councils are becoming increasingly unable to meet demands for affordable housing and 98% now describe their need as either 'severe' or 'moderate' with only 1% claiming that their need is not substantial. The survey of 166 local authorities in Britain highlights the pressure on councils to meet the growing demand for affordable housing due to a lack of new homes being built and that many of those that are being built are not affordable to those in need.

[Click here to read online.](#)

## Building homes, creating communities

Ensuring councils provide innovative solutions to meeting housing need



# Latest Research (4)

## Redefining neighbourhoods:

### A future beyond austerity?

Since 2010/11, neighbourhood services have been the hardest hit of all local government services, taking a shrinking share of a shrinking budget. Over this period, the worst hit neighbourhood services in England have had spending cut in half. Many have seen cuts of at least a quarter and the most deprived local authorities in England have seen the biggest fails. This hard hitting new report by APSE and the New Policy Institute (NPI) explores the impact of austerity on neighbourhood services, and warns of the consequences of this continuing downward trajectory in funding which risks falling to a 60-year low.

[Click here to read online.](#)



## Redefining neighbourhoods:

### A future beyond austerity?



## Redefining Neighbourhoods: Beyond Austerity

Premiering 7 September at the APSE Annual Seminar Awards Dinner in Oxford

Redefining neighbourhoods: Beyond austerity will look at how local authority frontline strategies need to evolve as funding diminishes and social care needs increase. The programme will also bring to life investment strategies that lead to a more self-sufficient and sustainable future.

'REDEFINING  
NEIGHBOURHOODS:  
Beyond austerity'





# Advocacy

- APSE Representative on the Executive Committee of Scottish Waste Industry Training, Competency and Health & Safety forum (SWITCH)
- Steering Group for Code of Practice on Litter and Refuse – Zero Waste Scotland/Scottish Government  
(Also hosting the Litter Managers Network meetings with Zero Waste Scotland)
- APSE Representatives on the Scottish Government Nursery Milk Scheme Short-Term Working Group  
(Janice Fanning, Stirling and Anne Hanlon, North Lanarkshire have kindly volunteered)
- Continued representation at Party Political Conferences  
(the next is SNP in October)
- Continuing to respond to Scottish Government consultations  
(upcoming consultations we plan to respond to include Socio-Economic Duty, Climate Change Bill, Updating of the School Premises (General Requirements and Standards) (Scotland) Regulations 1967 and Raising Standards and Improving the Quality of Road Works in Scotland)
- Continuing to strengthen relationships with other organisations

# Network Queries

- Our network queries service allows you to ask your peers in other Councils questions and receive information and advice.
- Queries are sent out via e-mail anonymously and any member is eligible to use this service.
- Responses are typically collated within a month.
- If you would like to send out a query, please contact Garry at [GLee@apse.org.uk](mailto:GLee@apse.org.uk) or call 01698 459051.

# Performance Networks

## **Deadlines for data submission:**

Building Maintenance – 23 October 2017

If your data is submitted by 8 September, your data will be error checked as part of the validation sessions.

The next data completion training is on 30<sup>th</sup> August in Hamilton Town House. This is free to attend, you just need to book by contacting Darja at 0161 772 1810. Additional sessions can be held if there is enough demand.

- **Now have 71 local authority members (15 in Scotland)**  
(Aberdeen, Angus, Clackmannanshire, East Dunbartonshire, East Lothian, Falkirk, Fife, Glasgow, Highland, Midlothian, North Ayrshire, Orkney, Shetland, South Lanarkshire, West Lothian)
- **APSE Energy partners with Robin Hood Energy**  
APSE Energy will provide capacity to deal with the inquiries being received, and will support those local authorities that are taking forward work with Robin Hood Energy. They will also have a role in ensuring the Robin Hood Energy message gets out to all local authorities, ALMOS, housing associations and other public sector providers.
- **New publication – The Merton Rule (for members only)**  
This pamphlet outlines the current situation on The Merton Rule (developed by Merton Council, which required new developments to generate at least 10% of their energy needs from on-site renewable energy equipment, in order to help reduce annual carbon dioxide emissions in the built environment)
- **Update to the Scottish Solar PV Toolkit**  
APSE Scotland have asked a consultant to update the Financial Modelling Spreadsheet for 2017-18. Should be available soon
- **Upcoming events**  
27<sup>th</sup> September, North Ayrshire (biomass boilers, district heating)  
24<sup>th</sup> October, Falkirk (electric vehicles and energy companies)
- **Energy consultancy support is available – Contact Phil at [pbrennan@apse.org.uk](mailto:pbrennan@apse.org.uk) / 0161 772 1810**

# Solutions

- ▶ Solutions can provide consultancy support across the full range of council services, but in particular front line services.
- ▶ Solutions can provide help and expertise within a number of areas, the main ones including:-
  - Efficient use of resources
  - Income generation
  - Demand side measures
- ▶ Branching out across the Interim Management side, with several new Associates now joining, specialists in Roads & Highways, Bereavement Services, Building Maintenance, Facilities & Leisure and Parks and Open Spaces. For any Interim requirements, please contact Emma Taylor, Client Coordination Officer - 0161 722 1810 or [etaylor@apse.org.uk](mailto:etaylor@apse.org.uk)



# Training Events

<b>Event Management</b>	<b>04/09/2017</b>	<b>Glasgow</b>	<a href="#">More info</a>
<b>Driving at Work (Occupational Road Risk)</b>	<b>26/07/2017</b>	<b>Glasgow</b>	<a href="#">More info</a>
<b>Marketing your Local Authority Services to Business Customers</b>	<b>12/10/2017</b>	<b>Glasgow</b>	<a href="#">More info</a>
<b>Drugs &amp; Alcohol in the Workplace</b>	<b>30/10/2017</b>	<b>Glasgow</b>	<a href="#">More info</a>
<b>Principles of Modern Parks Management</b>	<b>31/10/2017</b>	<b>Glasgow</b>	<a href="#">More info</a>
<b>ICCM – The Bereavement Journey</b>	<b>16/11/2017</b>	<b>Glasgow</b>	<a href="#">More info</a>
<b>Developing and Delivering a Commercial Strategy in Your Authority</b>	<b>17/11/2017</b>	<b>Glasgow</b>	<a href="#">More info</a>
<b>Highway Liability</b>	<b>24/11/2017</b>	<b>Glasgow</b>	<a href="#">More info</a>
<b>Identifying Damp, Timber Mould and Structural Problems</b>	<b>28/11/2017</b>	<b>Glasgow</b>	<a href="#">More info</a>
<b>Catering Tenders</b>	<b>18/12/2017</b>	<b>Glasgow</b>	<a href="#">More info</a>

Courses can also be delivered in-house for up to 25 staff.

Contact Jan Kennedy for more information at [jkennedy@apse.org.uk](mailto:jkennedy@apse.org.uk) / 0161 772 1810

# Seminars

<b>APSE Annual Seminar, Exhibition &amp; Service Awards</b>	<b>Oxford, 6 and 7 September 2017</b>
<b>Winter Maintenance Seminar</b>	<b>Bradford, 29 September 2017</b>
<b>Future Focus – Where next for Local Government Services?</b>	<b>Wokingham, 3 October 2017</b>
<b>Housing and Building Maintenance Seminar</b>	<b>Liverpool, 5 and 6 October 2017</b>
<b>Refuse, Street Cleansing, Transport, Parks and Public Realm Seminar</b>	<b>Harrogate, 19 and 20 October 2017</b>
<b>Scottish Soft Facilities Management Seminar</b>	<b>Cumbernauld, 23 November 2017</b>
<b>Performance Networks Seminar</b>	<b>Blackpool, 7 and 8 December 2017</b>
<b>Catering, Facilities Management and Building Cleaning Seminar</b>	<b>Durham, 25 and 26 January 2018</b>
<b>Scottish Building, Housing and Renewables Seminar</b>	<b>Dunblane, 22 and 23 February 2018</b>
<b>Highways Seminar</b>	<b>Blackpool, 22 and 23 March 2018</b>

## Contact details

**Garry Lee, Acting Principal Advisor, APSE Scotland**

**Email: [GLee@apse.org.uk](mailto:GLee@apse.org.uk)**

**Phone: 01698 459051**

**Association for Public Service Excellence**  
Brandon House Business Centre, Unit 18-20, 23/25  
Brandon Street, Hamilton.  
**telephone:** 01698 459 051  
**fax:** 01698 200 316  
**web:** [www.apse.org.uk](http://www.apse.org.uk)

# Louise update

On Saturday 29<sup>th</sup> July at 6:26am, Isaac Robert David Melville was born two weeks early by caesarean section, with a healthy weight of 7lbs and 12ozs. Louise and Craig are doing well.

I have brought a card for the advisory group to sign if you'd like to.

