

APSE Climate Change and Renewables Network

27 January 2026

- [25-46 Circular Economy in Scotland Draft Strategy](#)
- [25-41 Compulsory Purchase Reform SG Consultation](#)
- [25-34 tRESP NESO consultation](#)
- [25-28 Flooding and Groundwater Guidance SG consultation](#)
- [Draft Environment Strategy SG consultation](#)
- [Heat and Energy Efficiency Technical Suitability Assessment \(HEETSA\) – SG scoping consultation](#)

For more information on all of our briefings please [click here](#)

Research

www.apse.org.uk

Bringing order to chaos

How does local government hold to account agencies delivering public services?



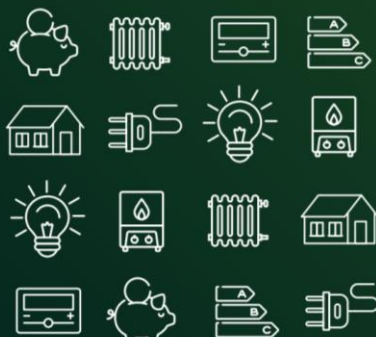
Taking a commercial approach

A guide for local councils in Scotland to income generation, trading and charging



ECO funding for local authorities

A simple guide to the Government's ECO scheme



The new municipalism

Taking back entrepreneurship



Energy across the authority

How local authorities are using assets to develop the energy agenda



Hollowed out

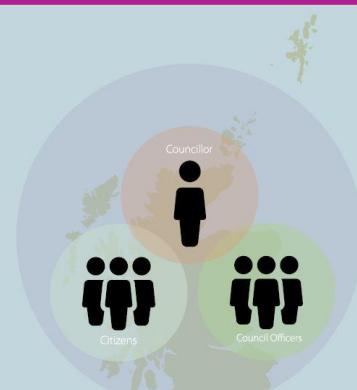
The impact of financial localisation on neighbourhood services



Doing local politics: supplementary report

Centre and locality in Scottish politics

A report for APSE Scotland



Risk and commercialisation

A guide for local scrutiny councillors



Research themes

Planning and sustainability

Biodiversity and grassland management

Workforce matters

Rewilding burial grounds

Fleet transition issues

Scottish Island economies

Advocacy

- APSE representative on the Executive Committee of Scottish Waste Industry Training, Competency and Health & Safety forum (SWITCH)
- APSE provides the secretariat for the Scotland Litter Managers Network with the next meeting on the 26th of February. [Click here](#) to register to attend
- APSE representatives on the IS/ SOLACE fleet procurement sub-group
- APSE is the secretariat to the All Party Parliamentary Group for School Food
- APSE representatives on the Scottish Government school nutrition roundtables
- Continued representation at Party Political Conferences
- Continuing to strengthen relationships with other organisations – APSE acknowledged in recent AI readiness research of LAs across the UK

Network Queries

- Our network queries service allows you to ask your peers in other Councils questions and receive information and advice.
- Queries are sent out via e-mail anonymously and any member is eligible to use this service.
- Responses are typically collated within a two to three weeks.
- If you would like to send out a query, please contact Louise at Lmelville@apse.org.uk or call 01698 459051.

Example

RENEW297 - Issues with TRANE heat pumps

A member authority is seeking feedback from others who have installed TRANE heat pumps. They are currently experiencing recurring issues with their units going into fault and would like to know whether any other authorities have encountered similar problems.

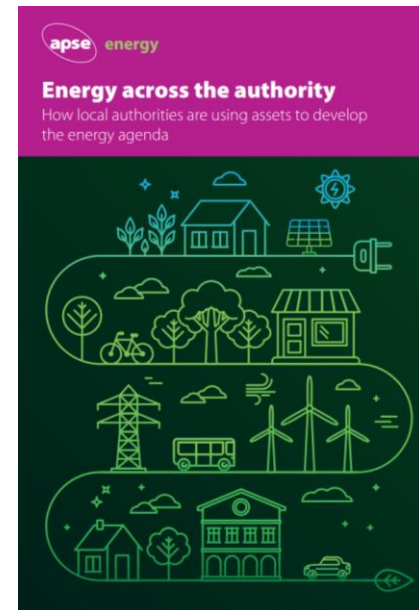
Performance Networks

- Performance Networks seminar took place on the 4-5 December 2025. Please [click here](#) to access the winners of the 2025 awards
- You can access free training from the PN team regarding data template completion. For more information [click here](#)
- Performance reports and trend analysis can be accessed via the PN portal. Please [click here](#) to find out more
- APSE understands that local authorities are facing increasing pressures on resources and have a number of alternative reduced templates in order to make the process of completion as easy as possible
- All templates now have a climate change and sustainability section

APSE Energy

APSE Energy service offers a range of briefings, publications and newsletters as well as in person and webinar events covering the Energy, Climate Change and Sustainability agenda.

Aiming to share the burden of this agenda across all services and managers by providing information that informs both those with specific energy and climate change responsibilities as well as wider service managers, officers and councillors. Information on membership is on the [APSE website](http://www.apse.org.uk).



- Solutions can provide consultancy support across the full range of council services, but in particular front line services.
- Solutions can provide help and expertise within a number of areas, the main ones including:-
 - Efficient use of resources
 - Income generation
 - Demand side measures
- Branching out across the Interim Management side, with several new Associates now joining, specialists in Roads & Highways, Bereavement Services, Building Maintenance, Facilities & Leisure and Parks and Open Spaces. For any Interim requirements, please contact Lucia Gervis, Client Coordination Officer - 0161 722 1810 or lgervis@apse.org.uk



Climate Adaption Courses

APSE's new suite of courses, beginning this March, is aimed at mitigation and adaption to the climate change crisis. Secure your place now to be at the forefront of essential climate resilience work.

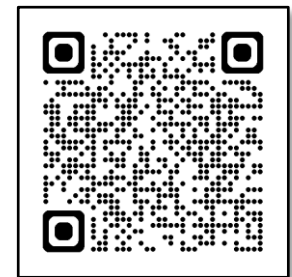
Climate Adaption: Urban Green Spaces

Tuesday 17 March 2026, 10:00 – 16:00

Climate Adaption: Advanced Soil Management

Thursday 19, Tuesday 24 and Thursday 26 March 2026, 09:30 – 12:30

Email training@apse.org.uk to learn more or to enquire about in-house course options.



Scan the QR code or [click here](#) to view our climate and renewables courses

Seminars

www.apse.org.uk

Facilities Catering and Cleaning Management Seminar	Stratford-upon-Avon, 5 & 6 February 2026	<u>More info</u>
Street Cleansing Seminar	Birmingham, 5 February 2026	<u>More info</u>
Counter Terrorism Awareness	MS TEAMS, 12 February	<u>More info</u>
The BIG Energy Summit 2026	Birmingham, 24 & 25 February 2026	<u>More info</u>
Building and Housing Seminar	Glasgow, 5 and 6 March 2026	<u>More info</u>
Scotland Fleet, Waste and Grounds Seminar	Aviemore, 19 – 22 May 2026	<u>More info</u>

Contact details

Louise Melville, Principal Advisor, APSE Scotland

Email: Lmelville@apse.org.uk

Phone: 01698 459051

Association for Public Service Excellence
Brandon House Business Centre, Unit 18-20, 23/25
Brandon Street, Hamilton
telephone: 01698 459 051
fax: 01698 200 316
web: www.apse.org.uk