

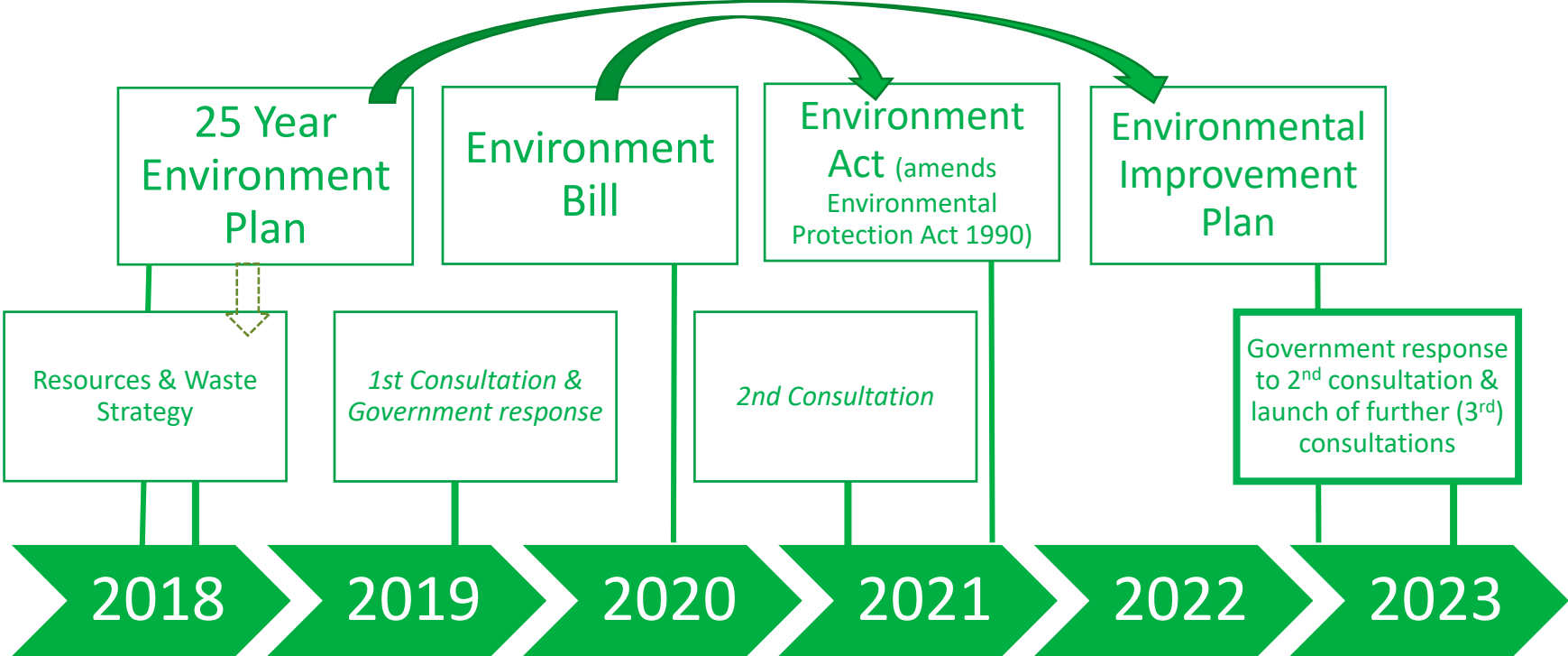


Department
for Environment
Food & Rural Affairs

Simpler Recycling in England

Jesse Duggal & Naomi Fitzgibbons, Simpler Recycling Team

Simpler Recycling Journey to Date...



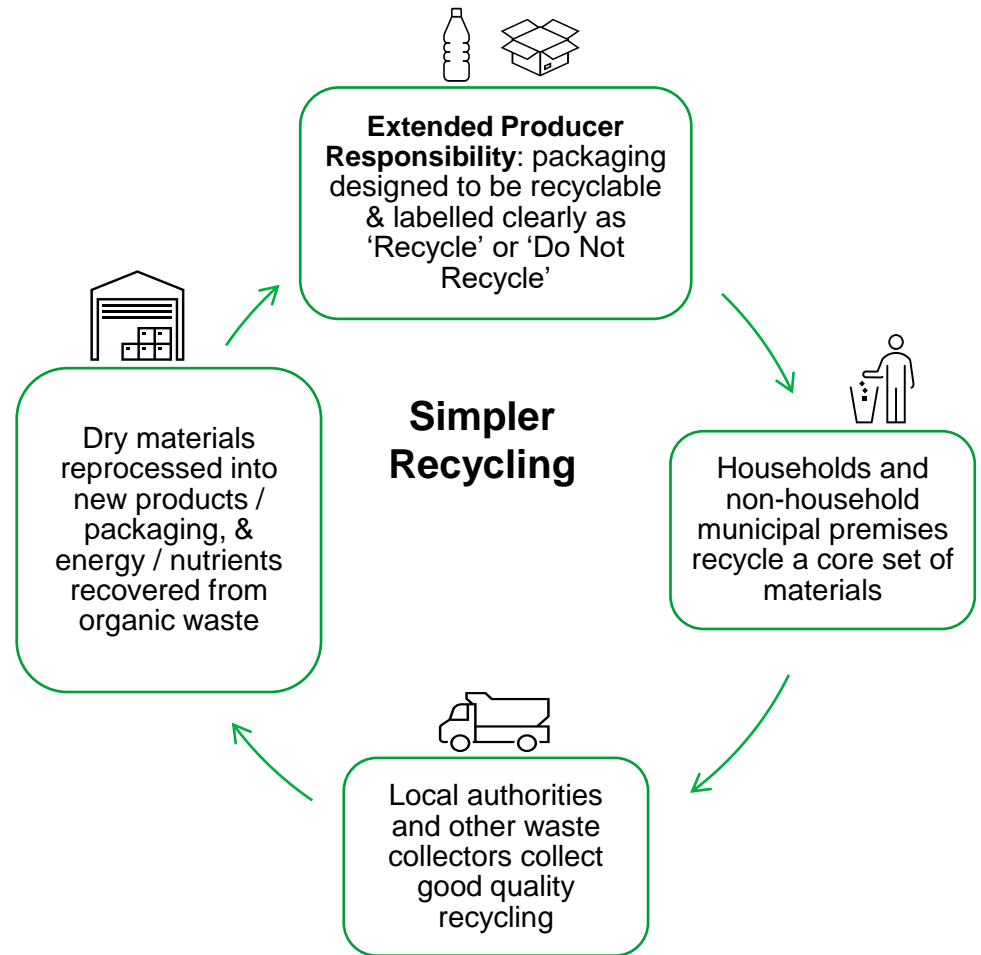
What: Simpler Recycling collections

Who: Households and 'non-household municipal premises' (e.g. businesses, hospitals, schools)

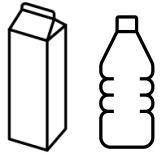
Where: England only

Why:

- Reduce confusion and make recycling easier
- Improve recycling rates
- Help to tackle environmental impacts of food and plastic waste
- Help grow UK recycling industry and ensure more recycled material in products we buy



Core waste streams for collection



Plastic

Paper & Card

Metal

Glass

Food waste

Garden waste*

Households only*



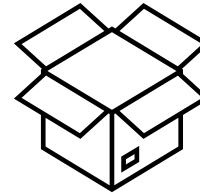
DRY RECYCLABLE WASTE



ORGANIC WASTE

Dry Recyclable Materials for Collection

- Materials to be collected:
 - **Glass packaging:** bottles & jars
 - **Paper and card**
 - **Metal:** tins and cans, foil and aluminium packaging and aerosols
 - **Plastic packaging:** incl. bottles, pots, tubs and trays, cartons, films and flexibles



Food Waste Collections



- The food waste stream includes:
 - *all food intended for human or household pet consumption, regardless of whether it has any nutritional value*
 - *biodegradable material resulting from the processing or preparation of food, including inedible food parts such as bones, eggshells, fruit and vegetable skins, tea bags and coffee grounds*
- Weekly food waste collections from all households
- Separate food waste collections from non-household municipal premises

Garden Waste Collections (households only)



- The garden waste stream includes *all organic material from the garden* **except:**
 - *ash, full-sized trees, invasive weeds and species, soil, turf cuttings and waste products of animal origin*
- Requirement to collect from households where requested but...
- Local authorities may recover a reasonable charge for collection under the Controlled Waste (England and Wales) Regulations 2012 (as is currently the case)

Summary of Implementation Dates



Non-household municipal premises

Simpler Recycling for non-household municipal premises (such as businesses, schools and hospitals) in England will be implemented by **31 March 2025***

**except micro-firms*



Household premises

Simpler Recycling for households in England will be implemented by **31 March 2026***

**(Where specific local authority contracts apply, we have agreed that weekly household food waste collections may start by a later date - known as a transitional arrangement)*



Micro-firms

Micro firms (those with fewer than ten full-time equivalent employees) will need to meet requirements by **31 March 2027**



Plastic films

Plastic film and flexibles collections from all premises will be introduced by **31 March 2027**

Further consultations



1. Consultation on Exemptions and Statutory Guidance for Simpler Recycling in England
 - Targeted consultation with relevant parties on proposed exemptions on co-collections and statutory guidance
 - This included consultation with WCAs and WDAs
 2. Consultation on Additional Policies Related to Simpler Recycling in England
 - Public consultation on additional policies related to Simpler Recycling, including expanding the list of relevant non-domestic premises in scope
- Both consultations ran from 21 October 2023 – 20 November 2023
 - We will publish our government responses in due course

Funding

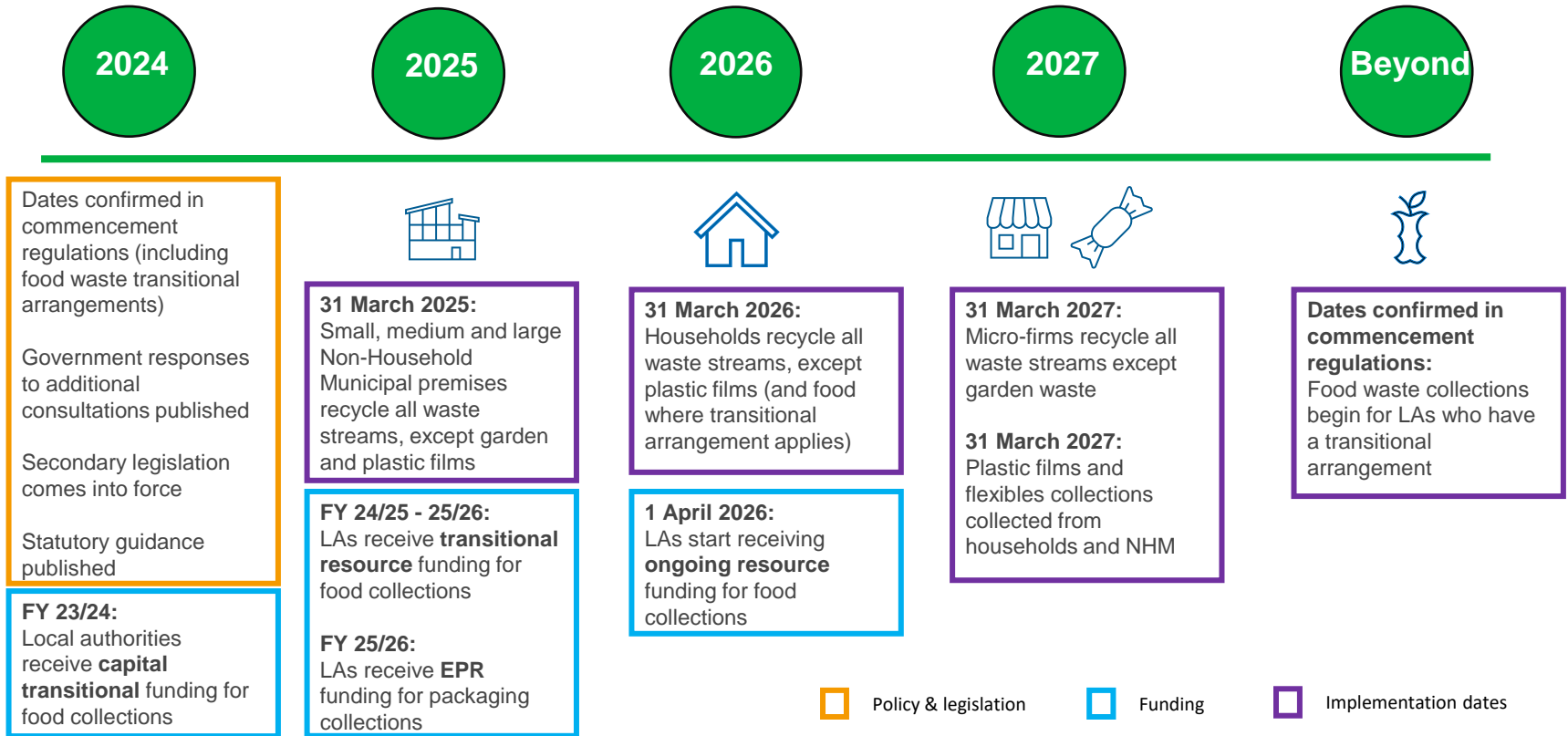


- Funding will be provided to local authorities for the household collection requirements:
 1. Local authorities will receive funding from packaging producers under Extended Producer Responsibility for packaging
 2. Local authorities will receive reasonable new burdens funding for providing food waste collections
 3. Local authorities can choose to charge for the collection of garden waste collections

Funding: Food Waste Collections

- We will be funding three separate areas:
 - **Capital** transition costs
 - **Resource** transition costs
 - Ongoing **resource** costs
 - We wrote to English local authorities in February 2024 to confirm their capital transitional funding allocations for food waste collections. We are currently assessing requests to review funding allocations.
 - We are currently estimating the funding required for resource costs. Elements of this will need to part of a bid to HMT at the next Spending Review
 - Funding will be provided through **section 31** grants. The first tranche of transitional capital funding was granted in February 2024.
-

Simpler Recycling in England – Timeline to delivery



Summary of the Simpler Recycling reforms

What?

- Reforms to recycling collections in England
- Household and non-household municipal premises to have separate collections of:

Dry recyclable waste



Organic recyclable waste



Residual



Why? Contribute towards reaching:
65% municipal recycling rate by 2035



Environmental, economic or social benefit

- Reduced landfill and incineration and associated carbon emissions
- Reduced carbon emissions as a result of reduced production from virgin materials
- Support growth of UK recycling industry



Who?

All households in England including flats



Non-household municipal (NHM) premises in England



- Businesses:

MICRO	SMALL	MEDIUM	LARGE
<10	<50	<250	≥250

(number of full-time equivalent employees)



- Residential homes
- Educational establishments
- Hospitals or nursing homes



Subject to consultation:

- Places of worship
- Penal institutes
- Charity shops
- Hostels
- Public meeting places

Collectors

- (Subject to consultation)** Local authorities / other waste collectors can co-collect dry recyclables and/or co-collect organic waste to reduce the number of containers required
- Local authorities must provide a weekly food waste collection to all households
- Local authorities must provide garden waste collections to households where requested



Waste collection authorities



Other waste collectors

When?

31st March

2025

Small, medium, and large NHM premises recycle all waste streams, except plastic film and garden



31st March

2026

Households recycle all waste streams, except plastic film (and food where transitional arrangements apply)



31st March

2027

Micro-firms recycle all waste streams except garden
Plastic film collections from all properties



How?

- Funding will be provided to local authorities for the household collection requirements:
 - Local authorities will receive payments from packaging producers under EPR
 - Local authorities will receive new burdens funding for providing food waste collections
 - Local authorities can charge for garden collections





recycling@defra.gov.uk
CPRenquiries@defra.gov.uk