

Developing a new Tree Nursery in Leicestershire

Adam Goodall
Leicestershire County Council
Forestry & Arboriculture Group

Content

- Aims of Project and Origins
- Multiple Benefits
- Partnership Approach

Project Origins

- Leicestershire County Council declared a Climate Emergency in May 2019.
- Revised Tree Management Strategy for Leicestershire County Council approved in 2020
- included an Action Plan which set out ambitions to significantly increase tree planting across the County.
- In December 2020, the Council pledged a target to become a carbon neutral council by 2030 and achieving 'net zero' across the county by 2045.
- Leicestershire is one of the least wooded counties in the country. In addition, the effects of Ash die back are likely to be significant to the already low woodland/canopy cover across Leicestershire (6% cover).
- The need for increased tree cover, both globally and locally, is well documented as a major action to mitigate climate change.
- increasing demand for nursery stock nationwide identified as a potential constraint – many of other councils making similar tree planting commitments.

Tree for every person of Leicestershire

- In 2021 The Conservative part manifesto included a pledge to plant 700,000 trees across the County: one tree for every resident of Leicestershire.

Our vision...

...is to help to plant 700,000 trees across Leicestershire – a tree for every person, over the next ten years. We're doing this so that our vital urban and rural treescapes can thrive - for now and for future generations.



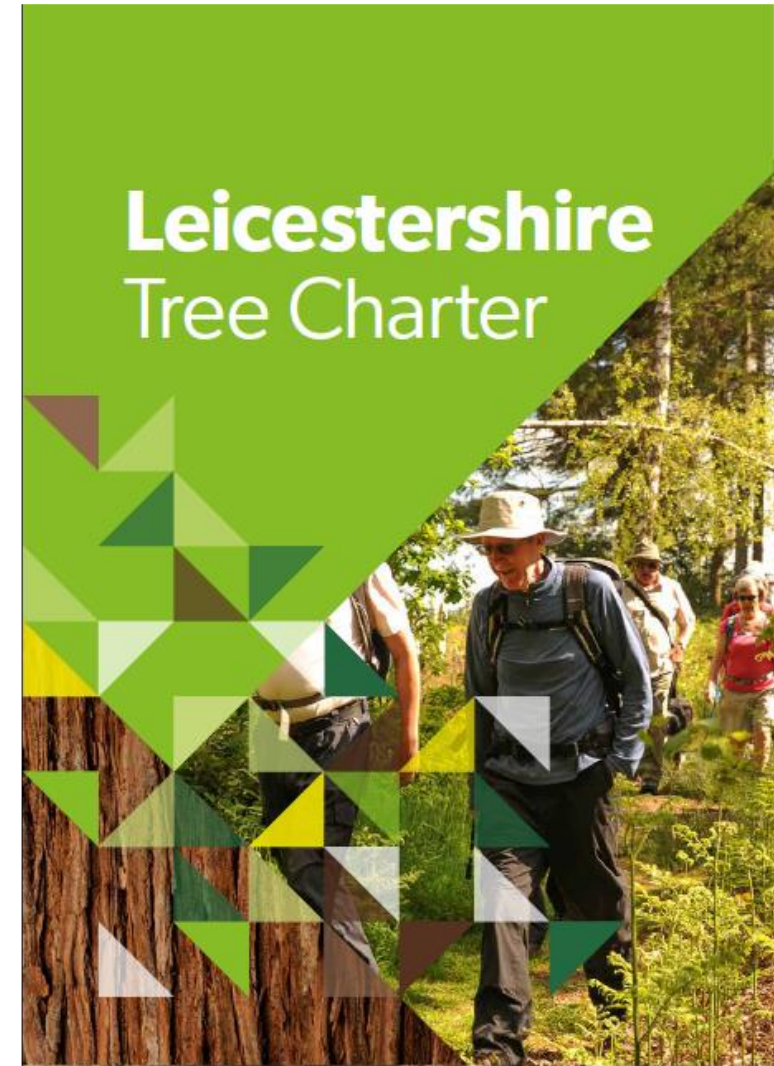
Tree for every person of Leicestershire

- We will collaborate with a range of different partners to facilitate the planting of 700,000 trees in Leicestershire.
- As a major landowner in Leicestershire, we will identify areas of our own estate where trees, hedgerows and woodland can be planted, in order to increase overall tree coverage.
- Develop new approach's to securing significant numbers of tree stock to ensure continued supply for planting schemes, including a new tree nursery to facilitate tree planting objectives.
- Through our Tree Charter we will collaborate with partners to deliver campaigns which will engage residents and other partners by raising awareness about the benefits of trees and encouraging tree planting.

Leicestershire Tree Charter

- Committed to work in partnership with the National Forest to share expertise and develop new and innovative approaches to ensure effective use of resources and funds.
- Call for action to ensure future generations can enjoy the wide-ranging services and benefits that trees and woodlands bring to our towns, cities and countryside.
- Kick started discussions over joint projects and ambitions for securing tree stock for tree planting schemes locally.

<https://www.leicestershire.gov.uk/environment-and-planning/tree-for-every-person/tree-charter-and-our-tree-management-strategy>



Benefits of a Tree Nursery?

- Availability of tree stock security has become an issue nationally, particularly due to
 - Pests and Diseases such as Oak Processionary Moth and Ash Die Back
 - Large scale Government Projects (i.e. HS2) putting pressures on large commercial nurseries across the country and limiting stock availability, with some nurseries requesting that stock is reserved years in advance.
 - Increase in tree planting initiatives general throughout England
- Grow self-collected seed selected from local seed sources that are well adapted to our local environment
- Offers many educational and other social engagement opportunities, and the activities can be carried out by volunteers.
- Training and social skills provision.
- Linked to other projects such as Heritage Orchards
- Adaptability of stock

Tree Nursery Concept

- We undertook a search through our own portfolio of sites including County Farms but unfortunately none quite fit the requirements.
- Discussions with the National Forest already in place over a number of schemes – gave us the ability to discuss the nursery and potential partnership approach
- Number of land acquisitions within the National Forest site portfolio including an existing farm which was evaluated as being the most suitable and could be part of a future wider development at the site such as a ‘Forestry’ hub.
- Site selected based on suitability, access and size.
- Initial masterplan designs were at a large scale but in order to determine viability of the nursery a smaller phased approach was devised.

Tree Nursery Concept



Project: Hanging Hill Farm Title: Proposed Masterplan Date: March 2020 Scale: 1:500 (Masterplan) Drawn: JH Checked: JH No: 150001-001	

Tree Nursery Concept

- Financially sustainable
- Proven ability for growth
- Showcase for community nursery – security of supply
- Local – ability to adapt/flexible to meet needs
- Development local seed collection
- Social impact
- Sustainability at core - low carbon
- Research/innovation/education



The National Forest Tree Nursery - Proposed Visualisation 01, 02 and 03.
For illustrative purposes only.

Tree Nursery Objectives

Develop local tree nursery with facilities to produce cell grown production and outside beds for the growing of container grown larger tree stock.

The stock produced is aimed at fulfilling the needs of and expanding the scope of the County Council's Free Tree Scheme as well as providing locally grown, low carbon mileage stock for National Forest Company planting projects.

The scale of the project would allow for more flexibility in the methods and species variation to be produced.

Mixture of seeds being sought through commercial seed suppliers and supplemented with local seed sourcing in conjunction with the Forestry Commissions Forest reproductive material initiatives

Work with local education/community group providers/organisations.

Production of tree stock locally would ensure there is a lower carbon footprint from local production methods and reduced transport with the potential for the development skills with an apprentice role.

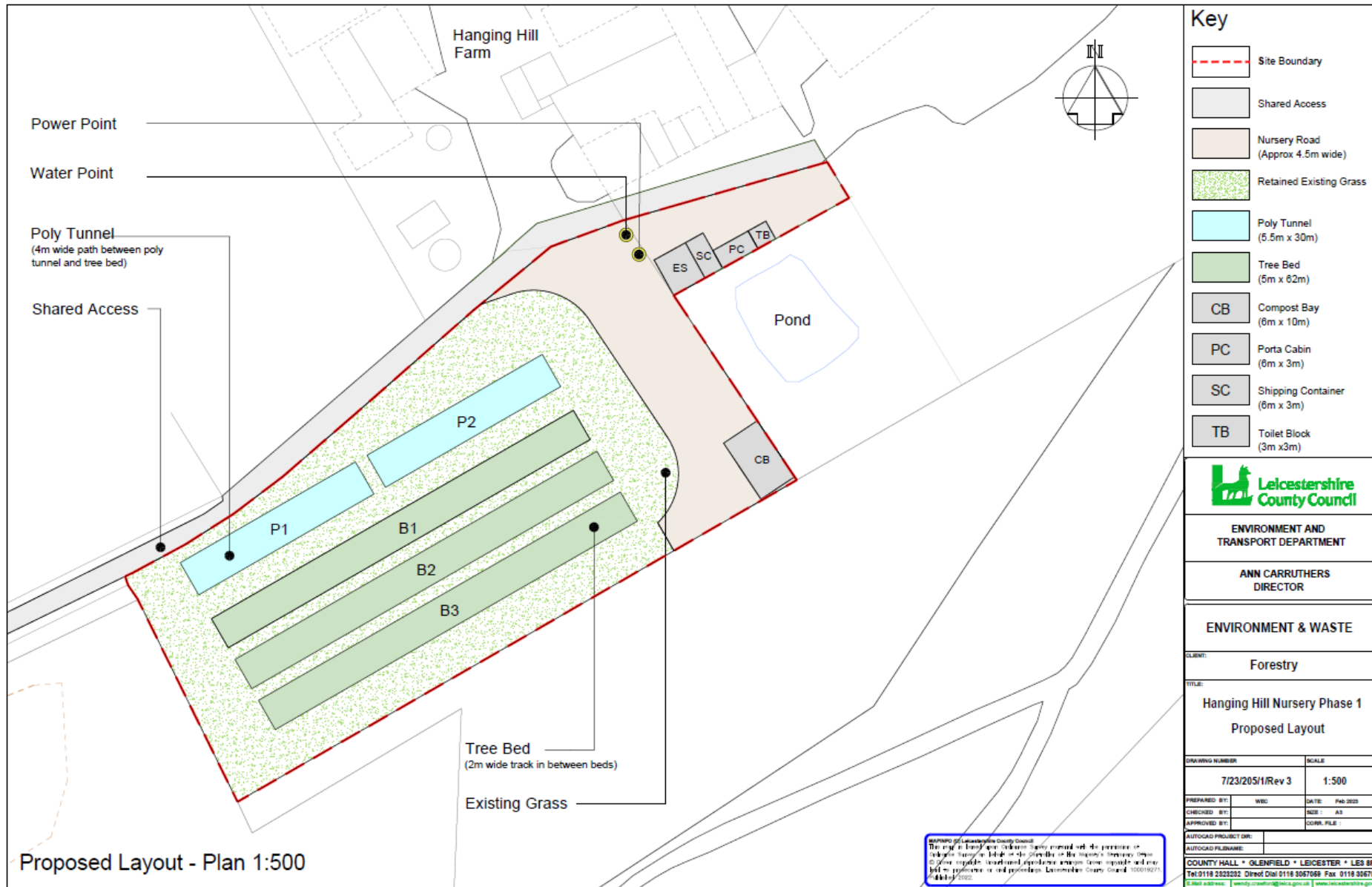
Part-time nursery worker to develop and run the site. Potential for forestry apprentice.

Engagement with local communities and volunteers to help with seed collection, growing on and tending plants, will provide opportunities for acquiring skills, learning about the natural environment and engaging in healthy outdoor activity.

Fruit Tree Production


- The Nursery also aims to produce fruit trees in partnership with SMB group college at Brooksby College
- A scion orchard is in the process of being created at Brooksby College where students will take cuttings and undertake the initial grafting works
- The grafted trees will then be grown on at the new Nursery site.
- Once ready the fruit trees will be offered to Parish Councils , Schools, community groups and land owners for the creation or development of new and existing Orchards across the county.
- Ties in with training and promotion on the importance of Orchards and their creation and management.





Key

- Site Boundary
- Shared Access
- Nursery Road (Approx 4.5m wide)
- Retained Existing Grass
- Poly Tunnel (5.5m x 30m)
- Tree Bed (5m x 62m)
- CB Compost Bay (6m x 10m)
- PC Porta Cabin (6m x 3m)
- SC Shipping Container (6m x 3m)
- TB Toilet Block (3m x3m)



Leicestershire County Council

ENVIRONMENT AND TRANSPORT DEPARTMENT

ANN CARRUTHERS DIRECTOR

ENVIRONMENT & WASTE

CLIENT: **Forestry**

TITLE: **Hanging Hill Nursery Phase 1 Proposed Layout**

DRAWING NUMBER		SCALE	
7/23/205/1/Rev 3		1:500	
PREPARED BY:	WEL	DATE:	Feb 2023
CHECKED BY:		SIZE:	A3
APPROVED BY:		COURT FILE:	
AUTOCAD PROJECT DWF:			
AUTOCAD PUBLISHING:			
COUNTY HALL • OLENFIELD • LEICESTER • LE5 8R7			
Tel: 0116 2223322 Direct Dial: 0116 3067069 Fax: 0116 3067014			
E-Mail: enquiries@lecc.gov.uk www.leicestershire.gov.uk			

Copyright © Leicestershire County Council
The right to reproduce or otherwise disseminate this material without the permission of Leicestershire County Council or the Controller of Her Majesty's Stationery Office is hereby expressly disclaimed. Reproduction, storage, transmission and use by any person other than the intended recipient is prohibited. Leicestershire County Council 10/09/19/021

Proposed Layout - Plan 1:500

Project Timescale

- Nov 2021– Agreed Nursery Project with Senior Management
- Dec-April 2022 – Assessment of internal sites
- June 2022 – Partnership approach and assessment of NFC sites
- July 2022 – Budget discussions and development of project plan
- Feb 2023 – Sign off by NFC leadership team
- March – June 2023 – Tender preparation
- July 2023 – Tender Advertised to framework
- Sept 2023 – Build phase
- Autumn/Winter 2023 – First seeds/stock prepared and grown

Funding opportunities

Forestry Commission

- The Tree Production Capital Grant (TPCG) provides funding to help tree nurseries and seed suppliers invest in projects

<https://www.gov.uk/guidance/tree-production-capital-grant>

- The Tree Production Innovation Fund (TPIF) supports projects with outputs that will better equip nurseries to supply trees required for tree planting projects

<https://www.gov.uk/guidance/tree-production-innovation-fund>



PR & Comms



Around 20,000 trees are expected each year from new Moira nursery

By NICOLE KEMBERY

LEICESTERSHIRE COUNTY COUNCIL have partnered up with the National Forest Company to create a new tree nursery in Moira which aims to produce around 20,000 trees per year.

The project is aimed at developing a new community-focused nursery involving local groups and organisations to help collect seeds and grow new trees to plant across the county and the National Forest and hopefully inspire other communities to start up their own tree nurseries.

It will be trialled for four years and hopefully produce 80,000 trees in that time.

The council has ambitious plans to increase the level of tree planting across Leicestershire with a drive to eventually reach 700,000 - one for every person in the county.

Councillor Blake Pain, Leicestershire County Council cabinet member for the environment and the green agenda (centre), with Stuart Dainton, head of land management and estates at the National Forest, and Louise Driver, National Forest head of operations.

Love Leicestershire

HOME NEWSROOM BUSINESS SPORT COMMUNITY LIFESTYLE BY LOCATION ABOUT US CONTACT US

Search [SEARCH]

MOST READ POSTS

Online Map Will Help Protect County's Trees
Leicester's First Neurodiverse Clinic
£400K Funding For City Walking & Cycling Schemes

SEND US YOUR ARTICLES & NEWS STORIES
Remember forward all of your news stories to the editor with images for us to publish and share on our community magazine and social media channels.

SUBSCRIBE TO LOVE LEICESTERSHIRE FOR AS LITTLE AS £3 PER MONTH

CONNECT WITH US ON SOCIAL MEDIA

COMMUNITY NEWS NEWS

ONLINE MAP WILL HELP PROTECT COUNTY'S TREES

19 FEBRUARY 6, 2023 | LEICA ANDREWS

A new searchable website-based map which allows people in Leicestershire to play their part in protecting some of the county's most valuable trees has been launched.

The map details every Tree Preservation Order (TPO) managed by Leicestershire County Council and shows if an individual tree, group of trees or even entire woodlands, are covered by one of the orders.

Members of the public can check whether trees are covered by a TPO before carrying out any works to trees, or starting any building works which may affect trees covered by a TPO. Breaching a TPO by carrying out unauthorised works can lead to a fine of up to £20,000.

The map can also be used to check if trees being worked on by third parties are subject to a TPO, so any breaches can be reported.

The interactive map only lists the TPOs issued by Leicestershire County Council, but provides links to each of the county's seven district and borough councils so members of the public can also check on TPOs issued by those authorities.

Councillor Blake Pain, cabinet member for the environment and the green agenda, said: "We are committed to playing our part in making Leicestershire a greener and healthier place, including plans to help plant 700,000 trees in the county - one for each person."

"We want to make sure that some of the county's most important trees are protected, and this website allows people to play their part in safeguarding these valuable trees."

The searchable map, as well as detailed information on TPOs, how to apply for permission to carry out works to a tree covered by a TPO and details of how to contact the TPO team for further advice, can be found [here](#).

Leicestershire matters

LATEST COUNCIL NEWS STRAIGHT TO YOUR INBOX

Welcome...

Thank you for subscribing to our digital Leicestershire Matters which keeps you up to date with the latest news from Leicestershire County Council.

Latest news

Budget update

Budget delivers vital support and protects services

Plan protects public services during tough economic times and includes £57m investment in support.

Read more

Tree planting marks one year of Ukrainian guests in Leicestershire

An oak tree has been planted to mark one year of solidarity with Ukraine.

Read more

Leicestershire County Council
Published by 30Crowd • 15 June at 15:33

We want to hear your views on Leicestershire's net zero action plan!

The plan will shape how we achieve net zero carbon emissions as a county by 2045.

The key goals are to...

- reduce carbon emissions generated by transport
- reducing energy use in buildings
- supporting businesses to go green
- supporting communities to tackle climate change
- increasing the removal and storage of carbon in natural systems like soil and forests

Have your say today <https://crowd.in/@YuDD>

Leicestershire County Council

Are you concerned about climate change?

NET ZERO LEICESTERSHIRE

Lead, enable, inspire

Have your say ...on our Net Zero 2045 Strategy and Action Plan today.

ENVIRONMENT

NET ZERO LEICESTERSHIRE

We're zeroing in on our plans to reduce carbon emissions in the county. We look at our new, ambitious next steps.

As you'll have seen on the front page, we're thinking big and have a goal of becoming a net zero county by 2045. Our newly-launched strategy sets out our priorities for the next five years and includes empowering homes to make them more energy efficient, helping businesses reduce their carbon emissions and generating even more renewable energy.

To achieve this, it's essential we all work together - we're joining forces with residents, businesses and other organisations to drive change.

With our new Leicestershire Climate and Nature Pact, we're working with councils and others to speed up our journey to net zero - it's a great example of working together to speed up action. Signed last month, the pact underlines our commitment to tackling climate change and nature decline and brings together voluntary, community and social enterprises, universities, education and research sector public sector and others. We've also secured funding from reserves to help deliver our Leicestershire CAN Collaborative to Accelerate Net Zero research project.

Councillor Blake Pain, cabinet member for the environment and green agenda, said: "We can't reach net zero on our own - we need a team effort, meaning by encouraging our residents, partners and businesses to get involved, we will help shape a greener future for the county and for generations to come."

If you want to get involved in tackling net zero or nature decline, sign up to the pact at www.leicestershire.gov.uk/netzero

RECYCLING

Charge up your battery knowledge

Your help can ensure all batteries are disposed of correctly.

Every day people throw out batteries - whether it's a classic AA battery, in a vape or even your electric toothbrush.

Improperly disposing of batteries can cause a serious risk for your skin, eyes, waste management centres and at household waste and recycling sites. If some types of battery are damaged when processed, they can ignite or explode.

You can make a difference - disposing of batteries properly helps to reduce the risk to waste staff and stops those that can be recycled ending up in landfill.

Top tips to make a difference:

- Don't put batteries in your general waste or recycling bin.
- Take it out - remove any batteries from old or broken devices.
- Recycle them shop - many battery collection points are available at supermarkets.
- Visit our sites - we'll happily take your old batteries at our recycling and household waste site.

Want to know more?

Visit www.leicestershire.gov.uk to find out about disposing your unwanted items, including batteries. You can also visit [recycling.com](https://www.recycling.com) to search for your nearest battery recycling point.

Our net zero plans...

- Sustainable transport:** Improving the energy performance of buses, reducing carbon emissions and fuel economy.
- Sustainable transport:** Encouraging the use of 300 electric vehicles on charging points across the county.
- Community:** Supporting businesses, organisations and communities.
- Sustainable food:** Reducing the carbon footprint of food production, distribution and waste.

Thank you