

Climate Change Adaptation in the West Midlands



apse

13 December 2023

About Us

- **We are the sustainability adviser** for West Midlands organisations, established in 2002.
- **Not-for-profit company** working across all sectors.
- **Eight priorities** (see image)
- **We coordinate and monitor** the only existing regional Sustainability Roadmap; a framework to 2030.
- **We support our 170+ members** and other local stakeholders to implement these changes by enabling them to demonstrate innovation and leadership and provide opportunities to collaborate and celebrate success.



The adaptation problem

| Roadmap symbol | 2023 | | 2022 | | 2021 | |
|---|-----------------|------|-----------------|------|-----------------|------|
| | Average % score | Rank | Average % score | Rank | Average % score | Rank |
|  | 72.5 | 1 | 67.5 | 2 | 52.9 | 2 |
|  | 71.7 | 2 | 63.5 | 4 | 50.0 | 3 |
|  | 69.7 | 3 | 67.7 | 1 | 49.2 | 4 |
|  | 66.0 | 4 | 60.7 | 6 | 46.5 | 7 |
|  | 63.2 | 5 | 61.7 | 5 | 56.0 | 1 |
|  | 62.4 | 6 | 56.1 | 7 | 46.8 | 6 |
|  | 61.6 | 7 | 65.5 | 3 | 48.4 | 5 |
|  | 59.7 | 8 | 52.6 | 8 | 44.2 | 8 |
|  | 50.9 | 9 | 51.2 | 9 | 40.3 | 9 |
|  | 50.6 | 10 | 43.8 | 10 | 33.1 | 10 |



Still the poorest performing area in our LA assessment

Why?

- No legislation
- No mandatory reporting
- Poorly resourced
- Lack of capacity and knowledge
- Practical guidance/ support from above
- Lack of funding
- It can be a hard sell!



Policy/ practice to hang off

- Adaptation Reporting Power being trialled in selection of LAs
- Global commitments/ reports (COP26 outcome, IPCC reports etc)
- Lead Local Flood Authority responsibilities for top-tier councils to address local flood risk
- Integration within other key documents, namely the Environmental Improvement Plan 2023
- Local Resilience Fora / emergency planning responsibilities
- Net Zero integration
- Funding for Net Zero and integration of adaptation actions (e.g. overheating/retrofit, tree planting etc.)
- Raw recognition of urgency to do something starting to become apparent.



Flooding in Bodenham © Herefordshire Council



The regional plan



Produced for:
Environment Agency

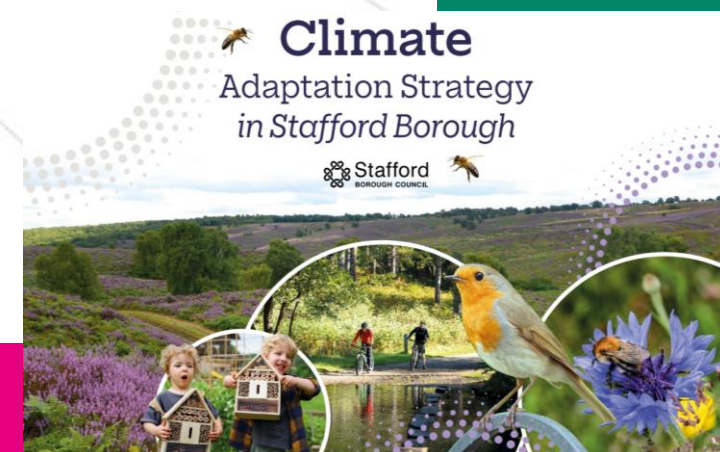
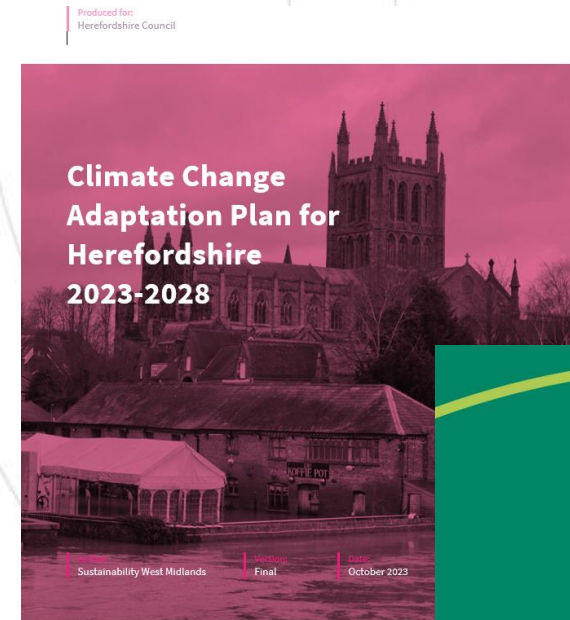


- WM Climate Change Adaptation Plan produced to catalyse action and encourage others to develop plans for their local areas (e.g. Stafford, Warwick).
- 43 risks, 6 risks and opportunities, 7 opportunities.
- 28/43 risks require more action in the immediate term.
- 76 actions in total.
- 21/76 actions are deemed a 'very high' priority to address.



Recommendations for LAs

- **Lay the groundwork** by conducting a risk assessment for your authority and local area, and following this, develop an adaptation plan. Use the [Local Partnerships toolkit](#) and the [West Midlands Climate Change Adaptation Plan](#) template.
- **Gain support and knowledge** from the likes of Defra, the Environment Agency, the Local Government Association/ Local Partnerships, and SWM.
- **Partner with other councils**, especially if you're in a two-tier system.
- **Working across sectors**, such as NHS, businesses, universities, communities etc. to drive forward and scale-up local action.
- **Integrate with and frame alongside other priorities**, such as Net Zero, health, business continuity, biodiversity, social justice etc...
- **Identify the quick wins** (guidance, training, alerts, integration etc.)
- **Identify your funding options** from sources such as CCC and ourselves.
- **Borrow and apply ideas**; copy something that has worked well elsewhere!



Summary of our work on adaptation



West Midlands
Combined Authority

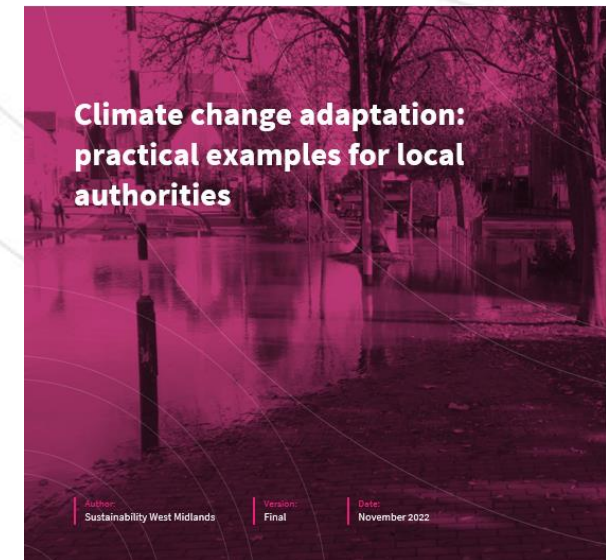
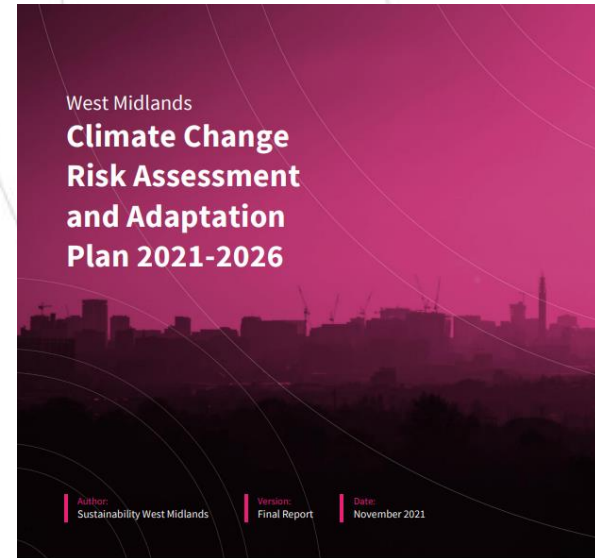


Herefordshire
Council



Climate
Change
Committee

- [West Midlands Climate Change Adaptation Plan](#)
- Local authority case study [compendium](#) and [engagement](#)
- [Local authority benchmarking](#) x3
- WM Adaptation Working Group
- [Weathering the Storm](#)
- Weathering the Storm for Agriculture
- Adaptation and risk toolkit for the NHS
- NHS adaptation case study compendium
- [Adaptation plan and supporting activity for WMCA](#)
- Adaptation plan and supporting activity for Herefordshire
- [Accessibility support for the CCRA](#)



How SWM can support organisations with adaptation

Our adaptation offer

- Upskilling, training, engagement and advice
- Impact assessments and baselining; how have organisations dealt with extreme weather to date?
- Climate projections analysis
- Climate risk assessment at a high or detailed level
- Producing adaptation plans for an organisation and/or geographical area
- Research, guidance and reports providing adaptation advice

NEWS | Herefordshire has been placed under an exceptional fire severity warning by the Met Office

by Stefan Davies | Jul 17, 2022 | News

River Wye: Dead fish found in Herefordshire due to hot weather

© 21 July 2022

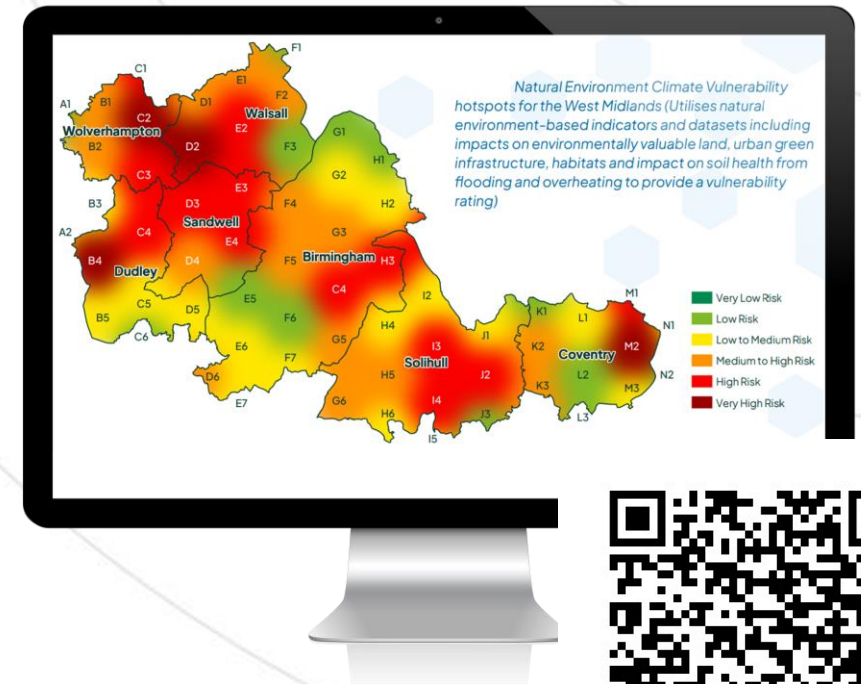


West Midlands fire services saw big rise in summer wildfires

© 30 December 2022

UK heatwave: Hereford pupils to finish school early to avoid 'hottest part of day'

© 13 July 2022



Keep in touch

alan.carr@swm.org.uk

www.swm.org.uk

@SWMtweet

LinkedIn: Sustainability West
Midlands

