



Maintenance Underground Waste Systems

Alan Craddock
Projects and Service Manager

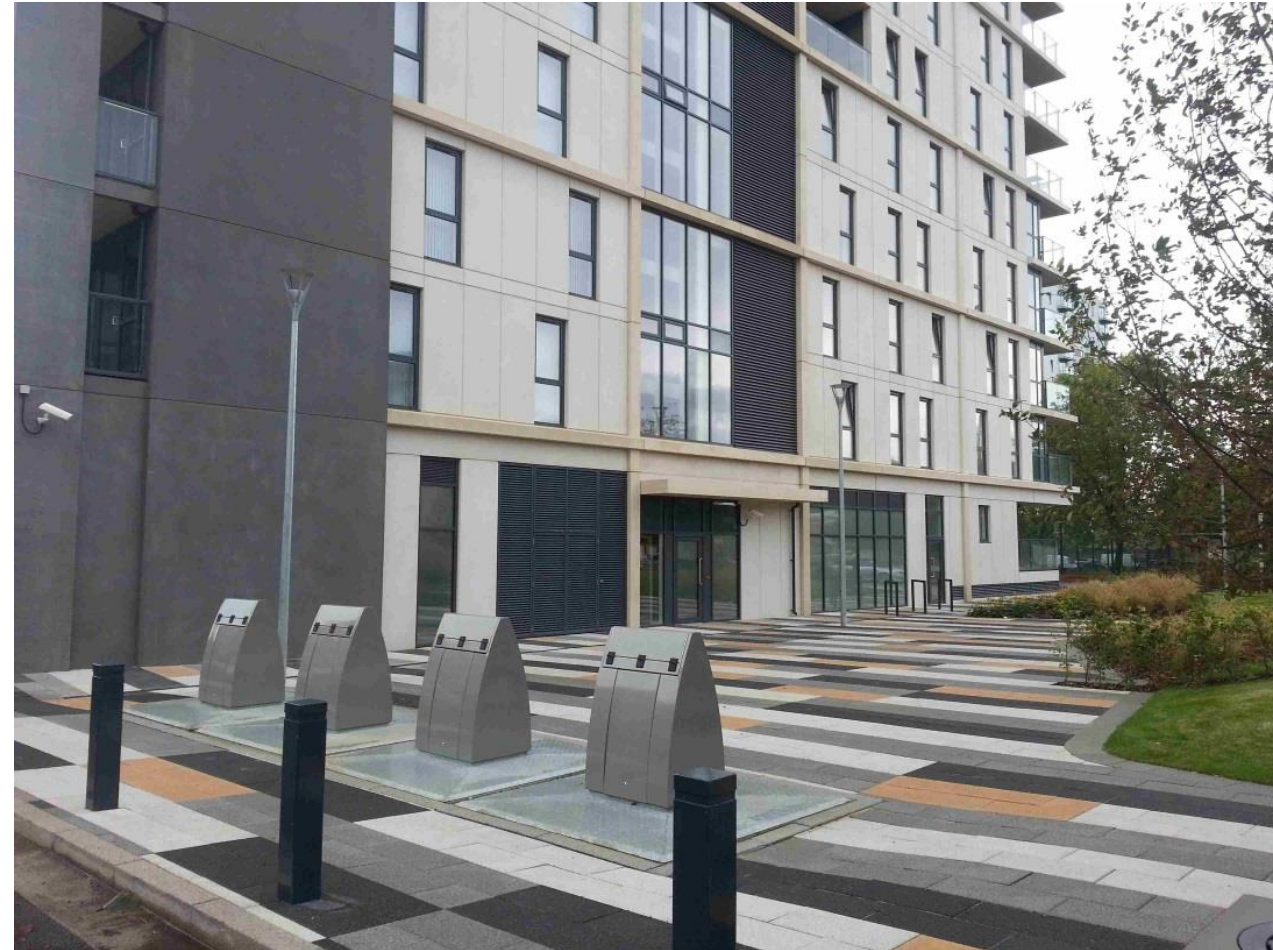
SULO[®]



Sulo UK Limited – About us

- Over a decades worth of experience working with Underground Waste Systems in the UK.
- Over 400+ systems installed in London.
- Extensive experience in providing maintenance and specialist washing services for a number of clients.

Underground Waste Systems – Installation Examples



Underground Waste Systems Installation Examples



Example:– How an Underground Waste System Operates



Make-up of an Underground Waste System?



Why do I need maintenance?

- Would you ever buy or invest in a new car and never service it?
- Well...you could, but what do you think will happen?
- Its a significant investment – why wouldn't you look after it...
- Like a car, an Underground Waste System has moving parts which are subject to **wear and tear** and require regular maintenance to ensure it continues to operate effectively **and most importantly safely**.
- Handling during the emptying / collection process.
- Regular maintenance costs versus reactive repairs.

What does maintenance typically involve?

This can vary depending on the specific system type / manufacturer but the below elements should be checked as a minimum at least once per year/unit.

- **Lifting hook/s and waste container door control mechanism** - critical to ensure that the unit can be lifted safely. When you consider that the unit can weigh anything up to 2.5 tonnes including the refuse or recycling material inside.
- **Safety platform / device** – comes into play whilst the waste container is being emptied into the collection truck. It ensures no one can fall inside the concrete pit which would otherwise be exposed which could lead to a serious injury.
- **Presence of leachate** – If leachate is present then this should be drained to avoid odours and minimise risk of corrosion to metal underground elements.
- **Waste pillar / aperture** - Ensure it operates correctly so residents / users can use it effectively.

Maintenance – commonly replaced parts



Safety Platform / Frame



Steel Cable



Nylon Roller

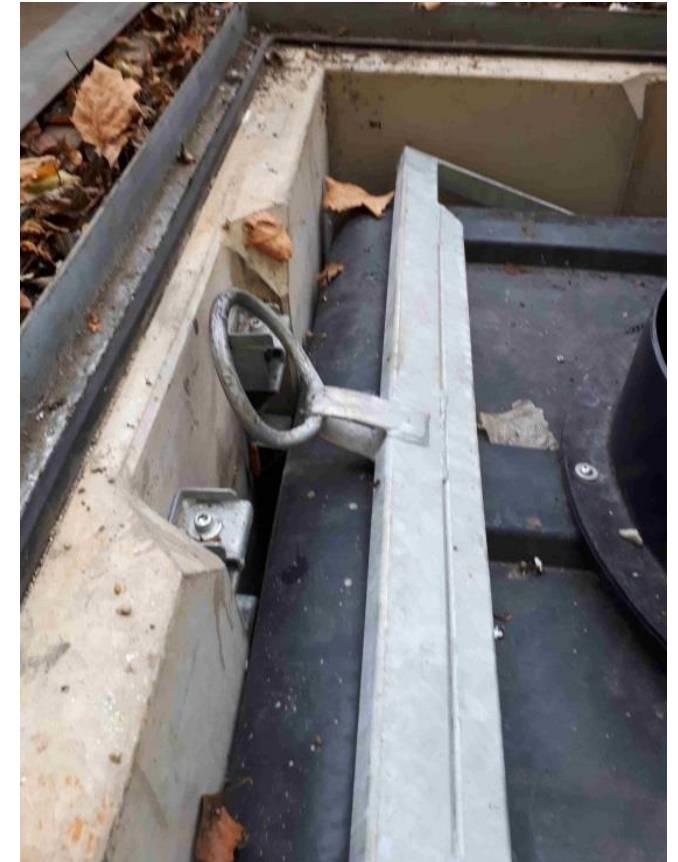
The above parts take the majority of the 'wear and tear' during the collection process and are most commonly replaced as and when required.

Example of lifting hook damage caused by mishandling



Both photos show the importance of correct handling by the collection crews. Issues like this can be caused by lack of training/experience and attempting to connect and lift the units too quickly.

These units will now require a costly reactive visit as the lifting point has become weakened and needs replacement urgently before being lifted again.



Example of safety platform damage



Both photos show the importance of a maintenance regime. To the untrained eye both platforms are rising to street level and appear operational but on closer inspection they are clearly not. Early detection will avoid a much more costly repair and minimise a potential health and safety incident.

Examples of Safety Platform Damage - Continued



This system has been neglected for many years with no maintenance. Firstly the repair work required is now much more extensive and therefore more costly. There is also a significant health and safety risk to the collection crew and the public during the emptying process. There is also a risk the unit would also not return fully to the ground after emptying, leaving a hazard present for residents and passers by until repaired.



Conclusion

- Lower cost – due to earlier detection of minor issues.
- Health and safety – lifting / safety platform.
- Serviceability – minimize downtime / disruption.
- Longevity – extend the life of your products / assets.

Thank You