

The background of the slide is a light gray gradient with several realistic water droplets of various sizes scattered across it. The droplets have highlights and shadows, giving them a three-dimensional appearance. The main title is centered in a bold, green, sans-serif font.

FOCUS ON ENVIRONMENTAL HEALTH IN FM AND CLEANING

ALEX DAWSON

EMERGENCY PLANNING AND PROPERTY SERVICES MANAGER


SEVENOAKS DISTRICT COUNCIL

INTRODUCTION

- WHO I AM
- BACKGROUND AND EXPERIENCE
- EH & FM - NOT A NORMAL UNION
 - FEARED
 - UNTAPPED RESOURCE
- WE CAN HELP YOU
 - CHANGING IMAGE OF REGULATORY SERVICES
 - HELPING & SUPPORTING YOU
 - NOTE OF CAUTION



WHAT IS ENVIRONMENTAL HEALTH

- WHAT DOES ENVIRONMENTAL HEALTH DO
 - HISTORY
 - PUBLIC PERCEPTION
 - SPECIALISMS
 - A WIDE REMIT & WEALTH OF EXPERIENCE
 - COMMERCIAL
 - ENVIRONMENTAL PROTECTION
 - HOUSING
 - OTHER
 - LA PROPERTY PORTFOLIOS
 - OBSCURE LINKS
- 

CLEANING, GOOD HYGIENE AND REPAIR – THE CHALLENGES

- THE INCREDIBLY DIVERSE RANGE OF FM
- RESOURCE PRESSURES
 - BUDGET CONSTRAINTS AND UNFORESEEN WORKS
 - HOW EH CAN HELP YOU TO PLAN BETTER
 - LIAISON
- ENFORCEMENT – INFORMAL AND FORMAL
 - WHERE & WHEN - AND HOW SUCH ACTION IS RECEIVED
 - EXAMPLES
- REPORTING STRUCTURES – ‘MANAGEMENT BY LUCK’
 - COMPLICATED RELATIONSHIPS
 - THE EFFECTS

WHY DIDN'T SOMEONE TAKE RESPONSIBILITY (THIS WAS NEXT TO A FIRE EXIT)



CLEANING, GOOD HYGIENE AND REPAIR – THE CHALLENGES CONTINUED

EXAMPLE: PUBLIC SECTOR KITCHENS

- INSPECTIONS
 - FREQUENCY
 - AIM
 - NATIONAL FOOD HYGIENE RATING SCHEME



CLEANING, GOOD HYGIENE AND REPAIR – THE CHALLENGES CONTINUED

EXAMPLE: PUBLIC SECTOR KITCHENS CONTINUED

- ESTABLISHING WHO IS RESPONSIBLE
 - MULTI USE ESTABLISHMENTS
 - MULTIPLE DELIVERY PARTNERS & CONTRACTORS



CLEANING, GOOD HYGIENE AND REPAIR – THE CHALLENGES CONTINUED

EXAMPLE: PUBLIC SECTOR KITCHENS CONTINUED

- OPERATIONAL EFFECT OF RESOURCE ISSUES
 - DEVOLVED BUDGETS = LOW PRIORITY FOR KITCHENS
 - POOR MAINTENANCE – POTENTIAL FIRE HAZARDS
 - RESTRICTED USE OF EQUIPMENT
 - FRUSTRATION

CLEANING, GOOD HYGIENE AND REPAIR – THE CHALLENGES CONTINUED

EXAMPLE: PUBLIC SECTOR KITCHENS CONTINUED

- NOT GETTING THE RIGHT DESIGN ADVICE EARLY ON
 - DON'T ASSUME DIFFERENT DEPTS SPEAK TO EACH OTHER
 - CLASSIC EXAMPLES: SINKS, PIPEWORK AND TOILETS



HEALTH & SAFETY

- EH - ENFORCEMENT ROLE
- LEASING COMPLICATIONS AND RESPONSIBILITIES
- HOW WE CAN HELP YOU
 - HIGHLIGHTING CORPORATE RESPONSIBILITIES
 - EXPERTISE ACROSS RANGE OF MATTERS I.E. ASBESTOS, LEGIONELLA & E.COLI
- YOUR H & S RESPONSIBILITIES
 - I.E. CLEANERS: LONE WORKER RISK ASSESSMENTS & COSHH
- WHAT THE INSPECTOR LOOKS AT
 - COMPLIANCE WITH RAFT OF LEGISLATION
 - COMMON ACCIDENT THEMES – TRIPS, SLIPS & FALLS
 - MAINTENANCE OF EQUIPMENT

RUBBISH, RODENTS AND PEST CONTROL

RUBBISH AND EH POWERS

- THE INCREASING USE OF THE COMMUNITY PROTECTION NOTICE
- TYPES OF COMPLAINTS
- EFFECT ON A NEIGHBOURHOOD



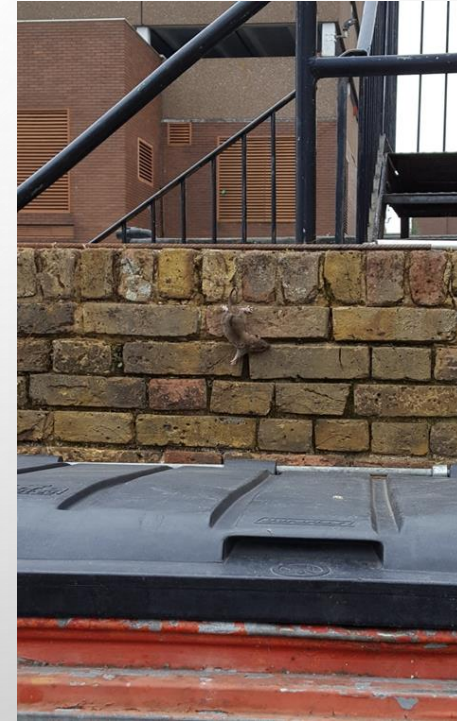
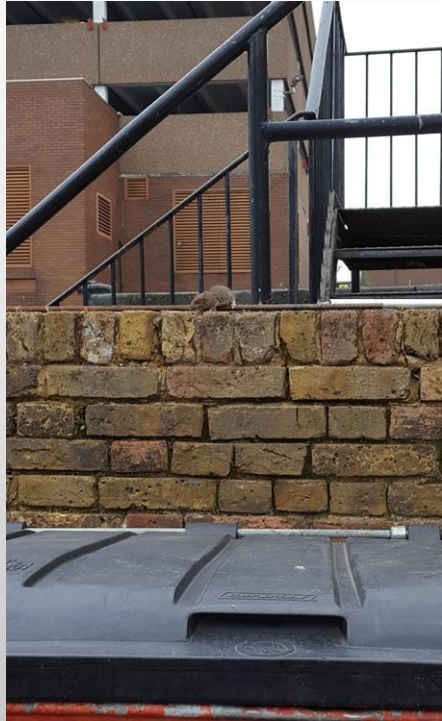
RUBBISH, RODENTS AND PEST CONTROL

RODENTS – ESPECIALLY RATS

- WHERE TO THEY COME FROM
- LEGAL DUTY TO TREAT RATS & MICE
- PREVENT HARBOURAGE
- IMPORTANCE OF ONGOING GROUNDS MAINTENANCE
- LEASE HOLD COMPLICATIONS - AGAIN



RATS IN A SUPERMARKET CAR PARK



RUBBISH, RODENTS AND PEST CONTROL

PESTS GENERALLY

- IMPORTANCE OF GOOD PEST CONTROL MANAGEMENT
 - DISEASES CARRIERS
 - BUILDING DAMAGE
 - LOSS OF REPUTATION
- COCKROACHES & PHARAOHS ANTS
 - FAVOURED LOCATIONS
 - BLOCK CONTROL TREATMENTS
 - COCKROACHES = SURVIVORS



COCKROACHES IN A KITCHEN



VOIDS, FILTHY & VERMINOUS AND HOARDING

- OUR ROLE AND EXPERTISE
 - EXPERIENCED
 - MULTI-DISCIPLINED APPROACH TAKEN
 - LEGISLATIVE REMEDIES
- THE CAUSES
 - SOMETIMES DELIBERATE
 - MENTAL HEALTH AND SOCIAL PROBLEMS
 - ILLNESS AND DEATH
 - HOARDING
- WHY THEY ARE A PROBLEM
 - EXPENSIVE TO CLEAR & CLEAR UP
 - CAUSE A NUISANCE TO NEIGHBOURS
 - DETRIMENTAL AFFECT



A TYPICAL FILTHY & VERMINOUS SCENARIO



HOARDING



THE SORT OF CONDITIONS LEFT BEHIND IN A VOID



WORKING TOGETHER TO ACHIEVE A BETTER OUTCOME

- EH - AN UNTAPPED RESOURCE AND WIDE KNOWLEDGE BASE
- USE EH EXPERTISE AT THE DESIGN STAGE
- CONSIDER WIDER IMPLICATIONS AND IMPACT OF FM ACTIONS OR INACTION
- USE EH WHEN PLANNING USE OF ASSET MAINTENANCE BUDGETS
- USE US – DON'T FEAR US