



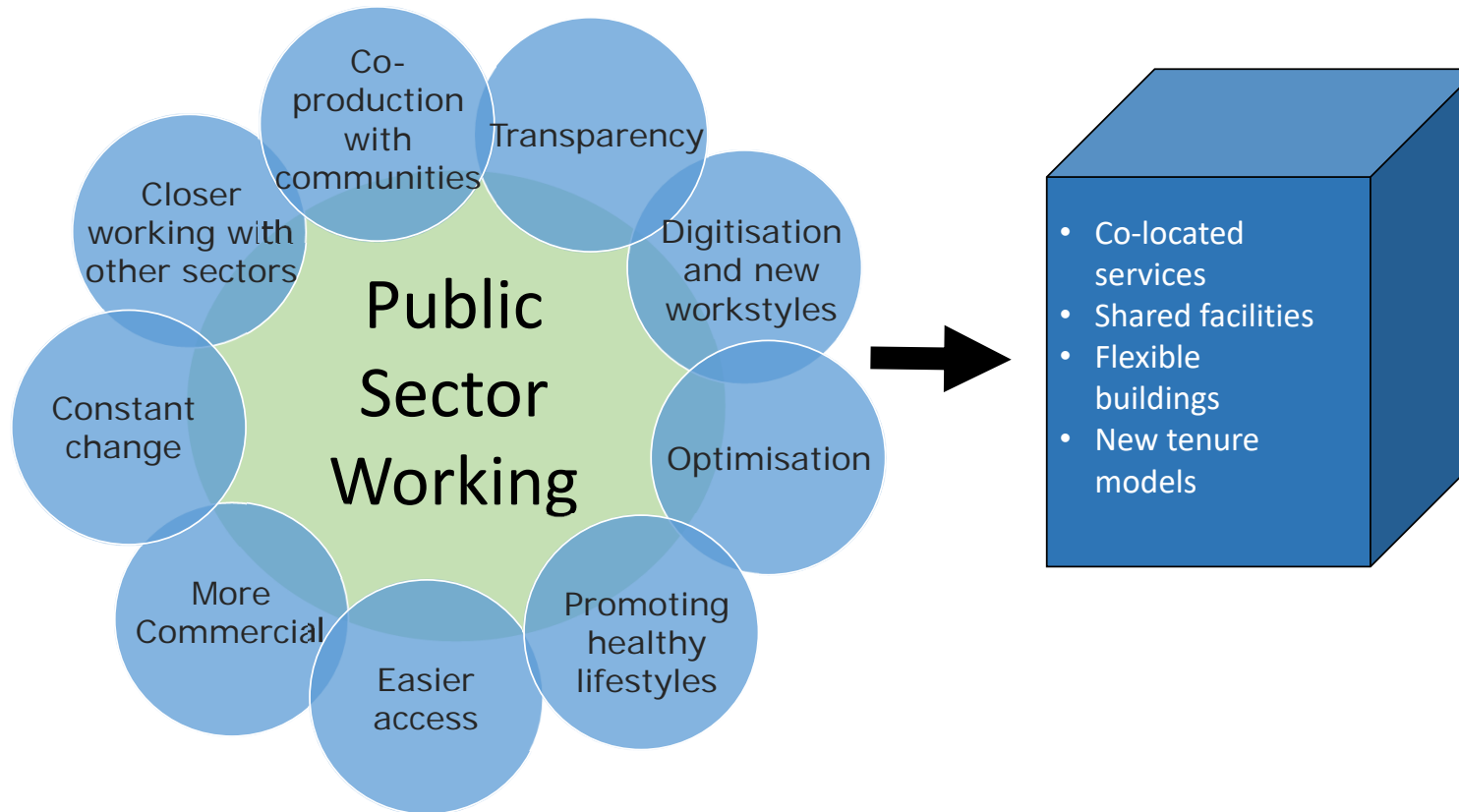
West Suffolk
Council

APSE Central Region Event - 19 April 2021

Alex.Wilson@westsuffolk.gov.uk



Embracing the Future



West Suffolk Property Board (One Public Estate)

- West Suffolk Council
- Suffolk County Council
- LEP/Combined Authority
- NHS
- Ambulance Service
- Police
- Fire Service
- Leisure Trust
- Suffolk Libraries Service
- West Suffolk College
- DWP
- GPU/LGA (OPE team)
- Any other partner, as required e.g. Academies, Government Departments, etc

Public Asset Studies 2014-2019:

- Mildenhall
- Bury St Edmunds
- Haverhill
- Newmarket
- Clare

(Brandon assets mapped before OPE through Brandon Centre project)

Hub projects:

- Mildenhall
- Bury St Edmunds
- Haverhill
- Newmarket
- Clare
- Brandon

Strategic
and
operational
needs

Partners'
estate
strategies

Local plan




Welcome to



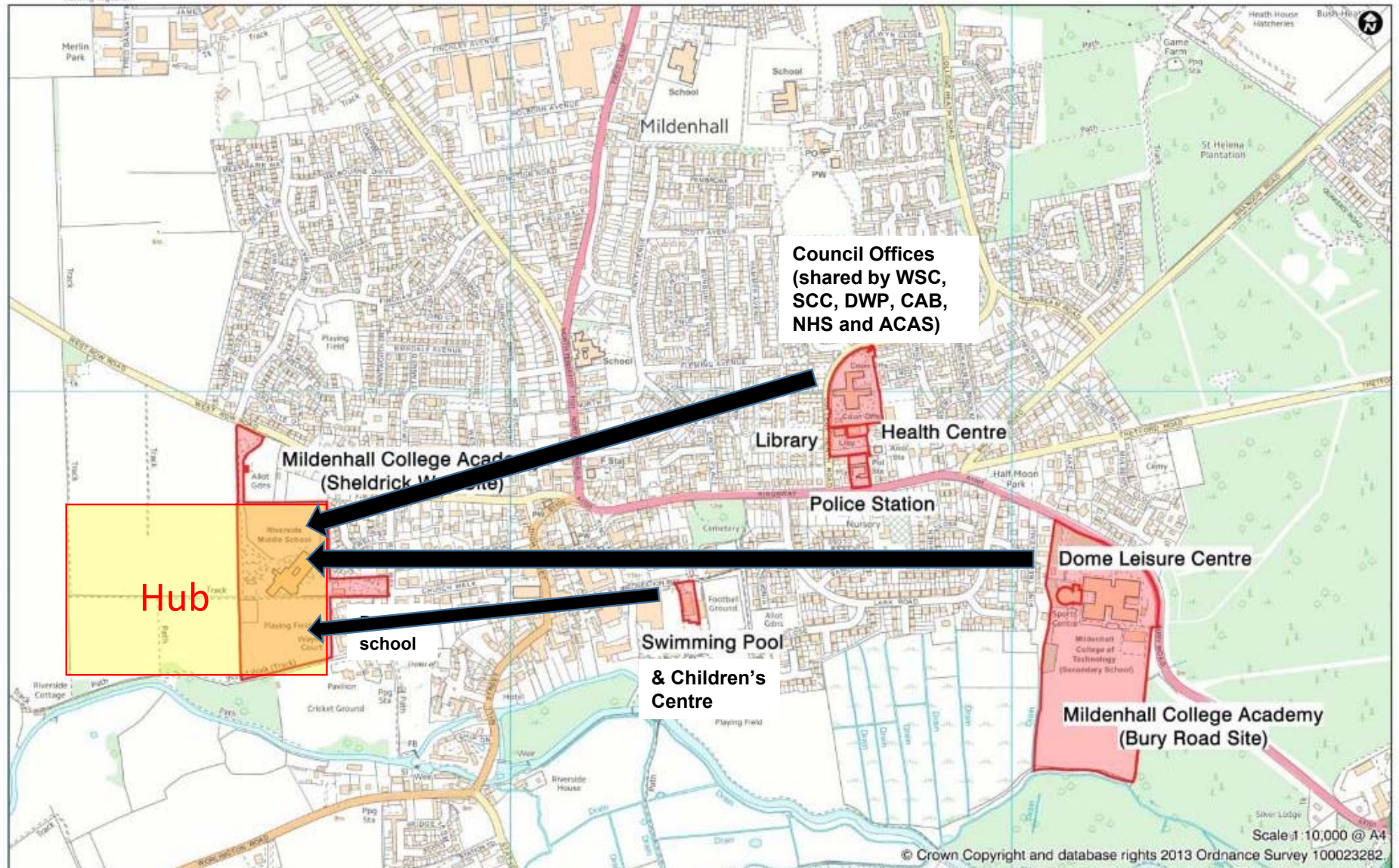
Mildenhall College Academy
Leisure Centre
Health Centre
Mildenhall Library
Lark Family Hub
Pre-school
Jobcentre Plus
Multi-agency Offices

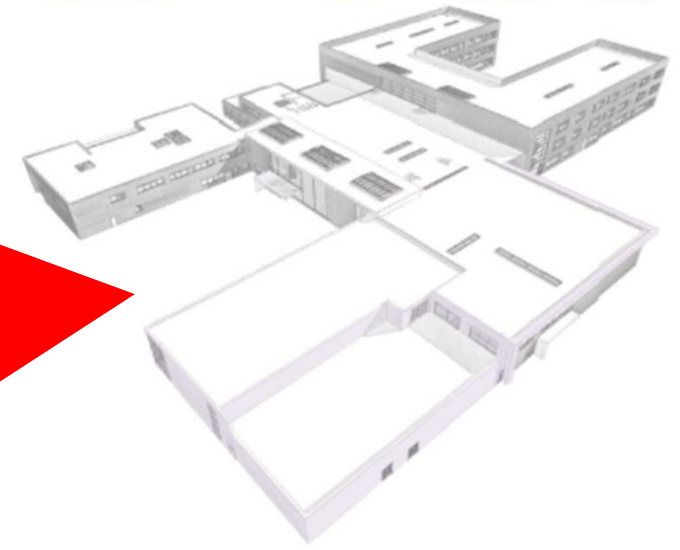


Why was a Hub needed?

- Much of the public estate in Mildenhall needs replacing
 - Split across five sites
 - Some elements too big for current needs, some too small
 - No future-proofing for the future growth of the town
- 

Mildenhall Showing Location of Facilities

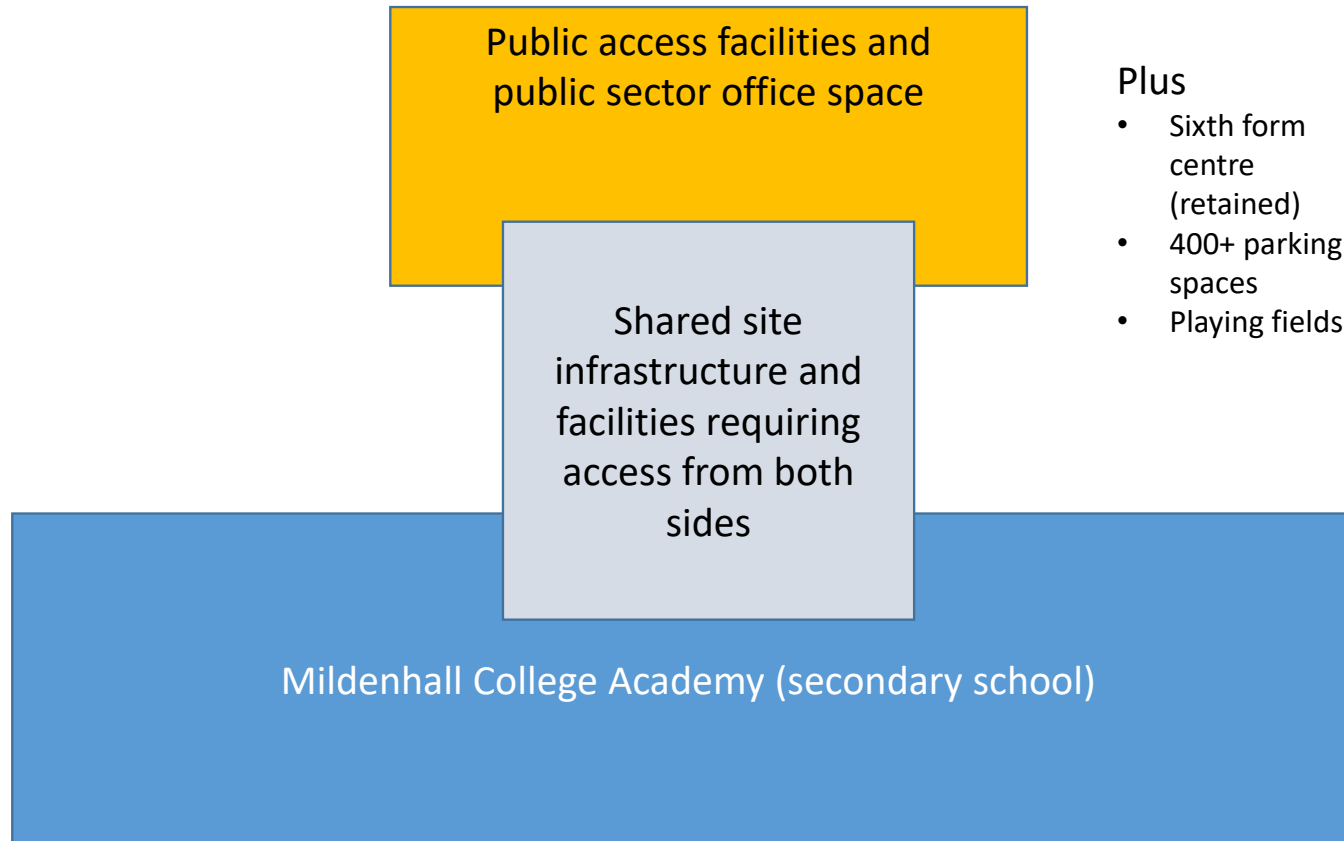




Mildenhall Hub

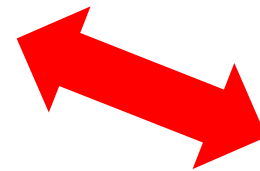


The basic Hub concept



Shared or Central Facilities

- Meeting/activity rooms
- Small private rooms
- Access to school facilities out of hours
- Library (integrated into central space)
- Leisure centre and pitches
- Café/kitchens
- Joint Reception Team ('Hub Hosts')
- Advice Centre
- Community 'hot-desks'
- Co-located team areas
- Central plant/renewables
- Car parking and external areas



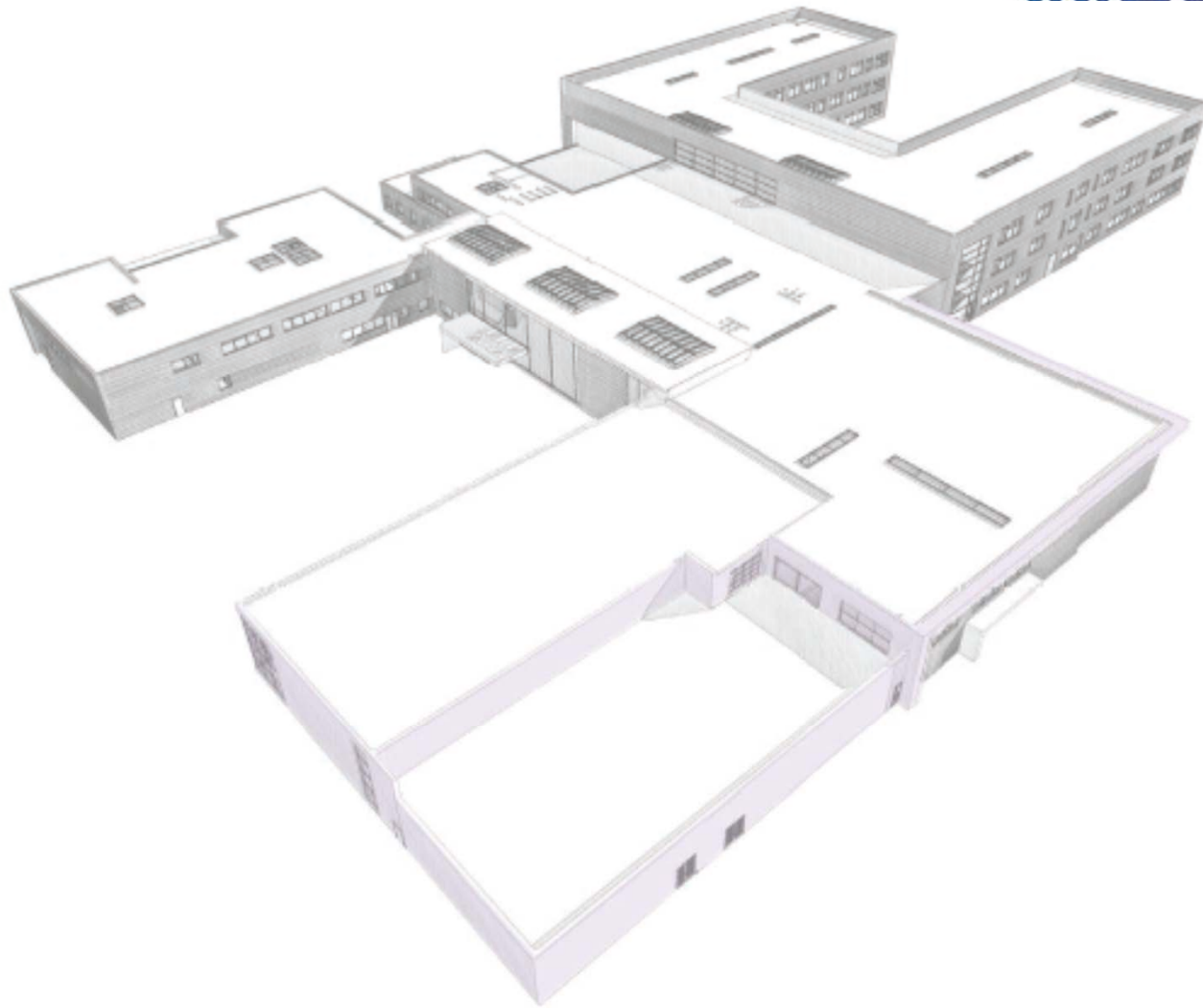
Secure and safeguarded areas

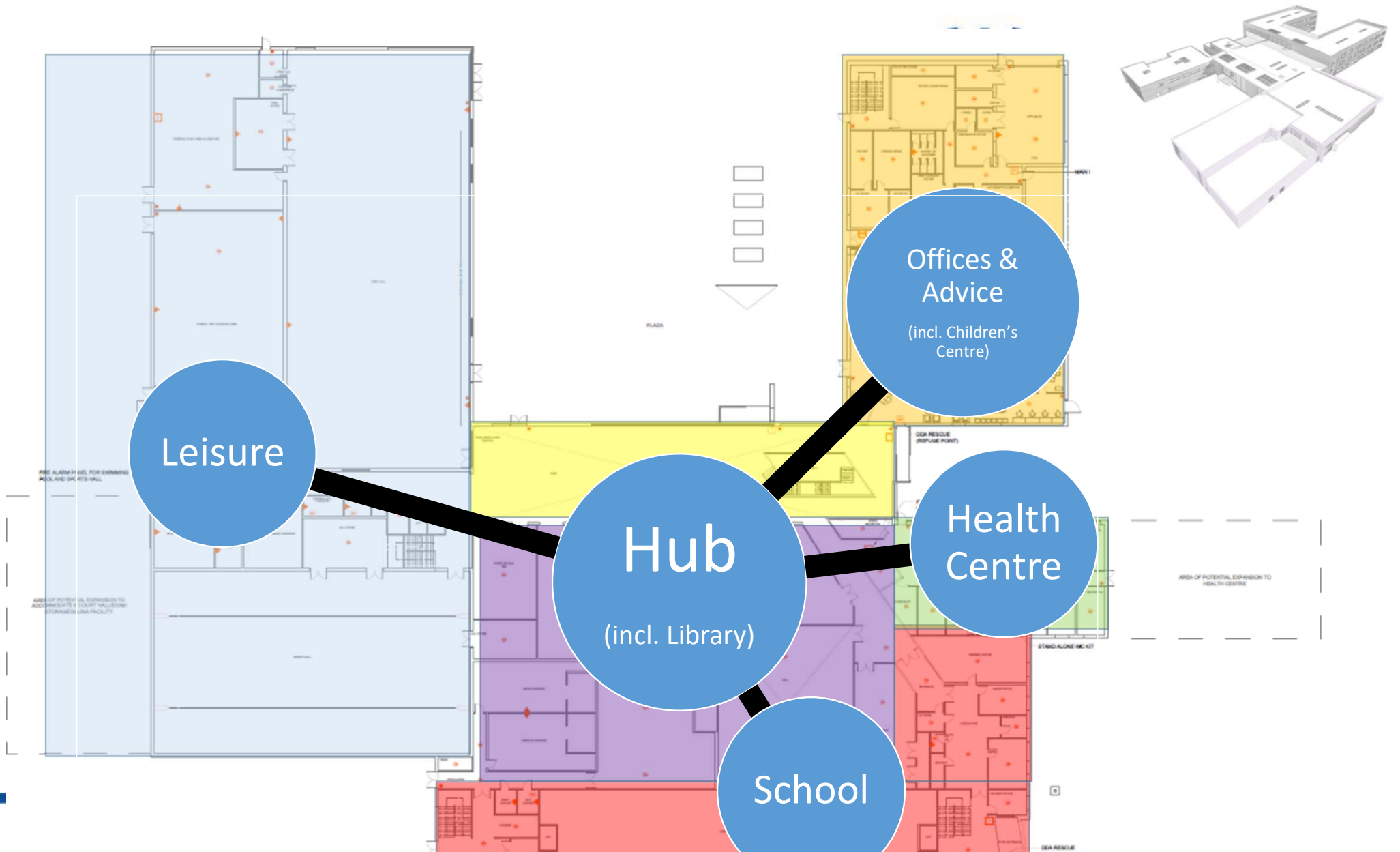
Linking to/Supporting:

- Schools
- Health centre
- Pre-school
- Offices/staff facilities
- Police facilities

Phase 1 layout for the Mildenhall Hub








Latest Timetable

- Practical completion by the end of April 2021
- Client fit-out/testing/staff induction during May
- Rolling programme to open public facilities from 24 May
- School to open to students in early June

All subject to continued good progress with commissioning of complex systems and Covid-19



Progress photos from March 2021

Architect: Concertus Design and Property Consultants

Main contractor: RG Carter

Project Managers and Cost Consultants: Currie & Brown





North plaza



South Elevation (School)




West Elevation


West Suffolk Council



Renewables at the Hub

- 472 solar panels which generate electricity during daylight hours (and more planned)
 - A purpose-built battery will store renewable energy using Connected Energy's E-STOR system and 24 second-life electric vehicle (EV) batteries. The company monitors the efficiency of each battery and individual ones can be replaced as and when required. This allows us to switch to onsite generated renewable energy at peak times.
 - A combined heat and power unit to generate electricity - will use the heat generated as a by-product for the building's hot water supply and it will contribute to the overall heating of the building
 - A ground source heat pump which will provide hot water for the swimming pools and warm the air in the pool halls
 - West Suffolk Council has already switched energy provider to Ecotricity meaning any electricity we buy is also 100% renewable
 - Collectively the greenhouse gas emissions savings will amount to 2,300 tonnes over the 20-year lifetime for the plant – the equivalent of taking 820 cars off of the road
- 

Why invest in renewables at the Hub?

- Builds on well over 10 years of large-scale investment
 - It saves money and gives partners cost certainty on utilities
 - Sets an example (and complies with planning policy)
 - Delivers on our climate change and carbon reduction commitments
 - Part of our existing programmes (some externally funded)...
- 

Advancing Communities towards low-Carbon Energy Smart Systems (ACCESS)

Creating a smarter grid in West Suffolk

Enabling local flexibility through peer-to-peer trading, demand side reduction and improve energy management and efficiency

- The pilot continues to be focussed on addressing the demand peaks at distribution network level
- Demand and generation management to solve local balancing constraints
- Use existing and develop new Distributed Energy Resources to manage demand in the study area
- Develop peer-to-peer trading between businesses to retain value in the locality
- Unlock possible grid constraints to future local growth
- Understand carbon reduction potential

What do we want?

To work with technology partner/s to demonstrate peer to peer trading on businesses like this.

Can incorporate low carbon energy generated on or off site, stored if necessary to cope with demand.

Work with the businesses on demand side reduction and improve their energy management and efficiency.



What are we looking for

- Engage 50 businesses, with a view to work with around 10-15 to actually deliver technology/services and trial peer to peer energy trading
- Actual energy data for a baseline and then to demonstrate benefits, savings.
- Energy saving – could be actual saving or a shift in energy consumption periods.
- Measure and manage the local grid and support efficient use of the generated, stored and used energy, data collection of present performance to start as soon as possible.
- Save 600,000 kWh and 250 tonnes Carbon dioxide (CO₂) annually due to the project
- 15% energy efficiency improvement across participating businesses
- Assess the potential to upscale across the Eastern Power Network.

For more details

The Hub Project generally:
Alex.wilson@westsuffolk.gov.uk

Renewables and ACCESS:
Andrew.Oswald@westsuffolk.gov.uk and Oliver.Ingwall-King@westsuffolk.gov.uk

