

A photograph of Edinburgh, Scotland, featuring a green sensor box in the foreground on the right. The box has a yellow sensor lens and the word 'LIT' printed on it. In the background, a paved path leads up a grassy hill towards the city, with the Temple of Antonine visible. The sky is overcast.

APSE Scotland Parks, Grounds & Streets Advisory Group 2 November 2016

EDINBURGH'S SENSOR TRIAL



'I thought this was done yesterday'

ASHLEY
City of Edinburgh Council

STATUS


- [Overview](#)
- [Sites](#)
- [Collections](#)
- [Reports](#)
- [Alerts](#)

PLANS

- [Today](#)
- [Future](#)
- [Past](#)

Alerts

25 active alerts

 25 full containers

[See all alerts](#)

Urgent containers

Today

118

Tomorrow

144

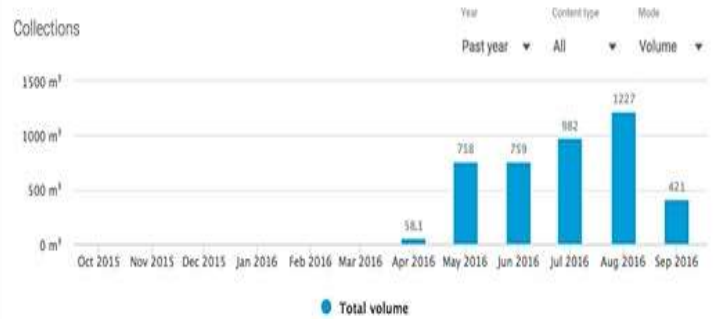
In 2 days

147

Fill level



Collections

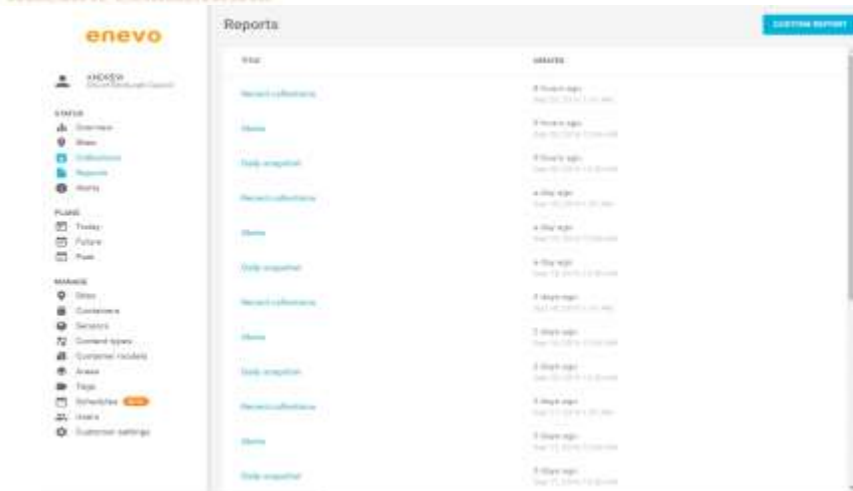
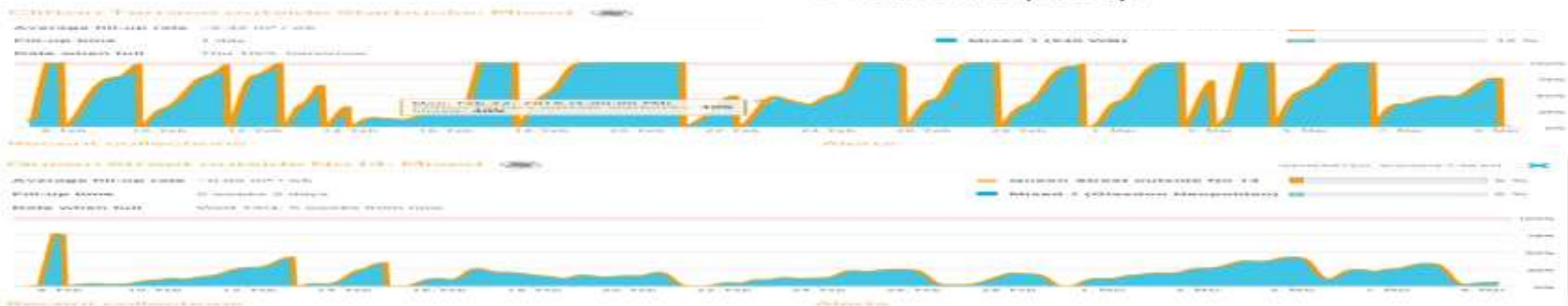


Plan Execution



- Only 5% of bins being serviced efficiently
- Rest of bins could be serviced 50% more efficiently
- 10% of bins could be serviced 90% more efficiently

- Removed 100 bins from Princes Street. Replaced with 40 larger units. Increased capacity by 4 times.
- Removed 100 bins from Promenade. Replaced with 30 larger units. Increasing capacity by 3 times.
- Removed all bins from Queen Street
- Reduced bins by 50% in the Cowgate Area. Doubled capacity.





Mixed 20 Sep 2016



Collections
76 sites



Unloading
1 times



Breaks
0 min



Vehicle
Dennis

Start time
09:20

Planned duration
5 h 57 min

Planned distance
16 mi



Re-use & Recycling Centre

