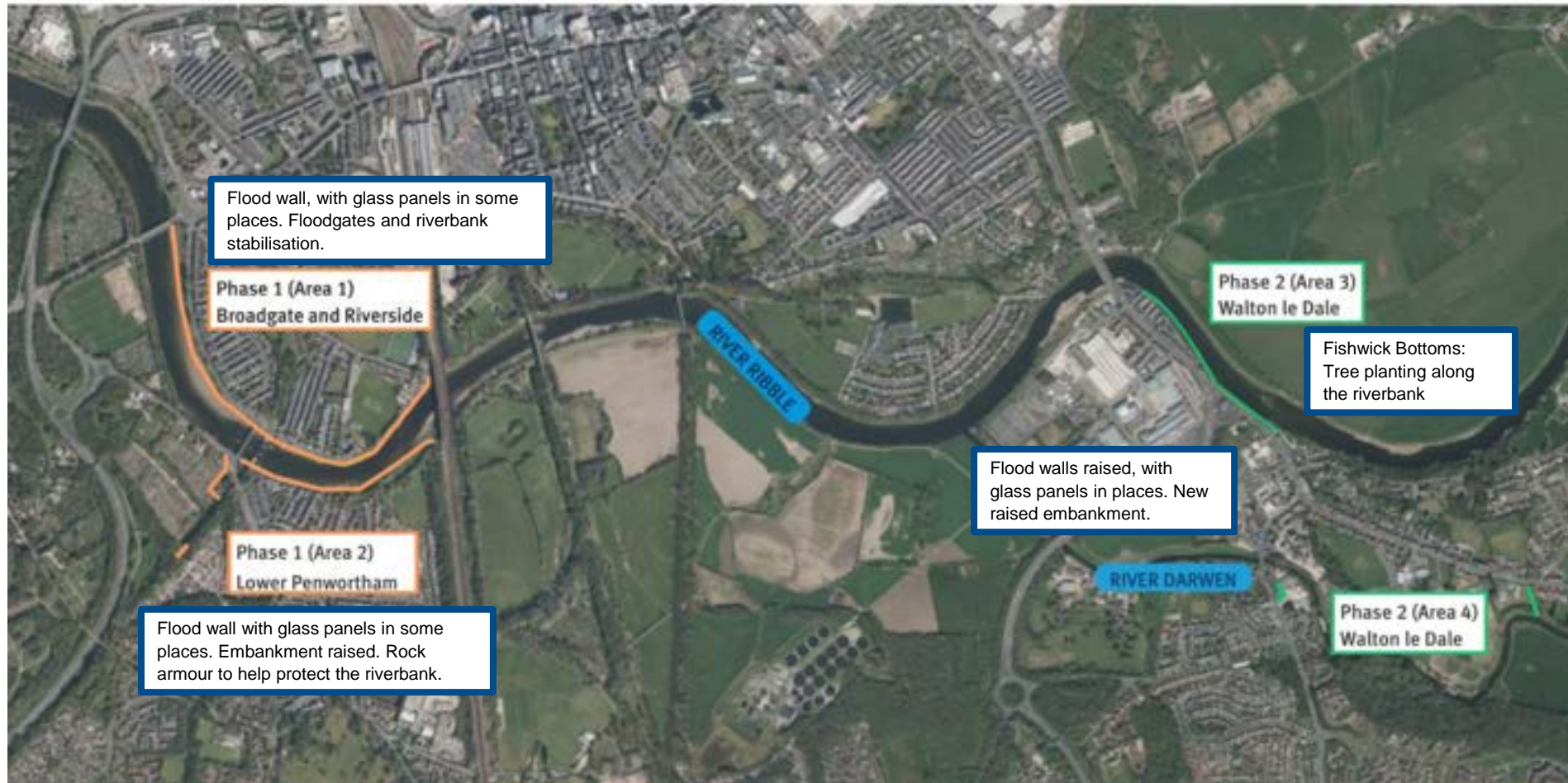


Preston & South Ribble FRMS

- There is a long history of flooding in Preston and South Ribble, which goes all the way back to the 1700s.
- The Scheme followed the 2015 floods. Almost 200 properties flooded in Preston and South Ribble. This was deemed to be a 'near miss' as peak flows on the Rivers Ribble and Darwen did not coincide with high tide.
- In Preston, the existing River Ribble defences were built in stages between the 1920s and the 1980s. However, these defences are now reaching the end of their design life and need to be repaired, replaced, or extended.
- The Scheme has been designed so that it is sympathetic to the local area. The new flood walls have been constructed and finished in a way that is appropriate for the existing buildings and landscape.
- Enhancements to the local environment for the long term.
- Delivers wider community benefits.



Scheme Overview Map



We are working with United Utilities, Lancashire County Council, Preston City Council and South Ribble Borough Council to coordinate improvement works across Preston and South Ribble.

The new flood walls and embankments will reduce the risk of flooding to homes and businesses.

Facts & Figures

Phase 1 in Preston & Lower Penwortham is under construction, with many of the new flood defences completed.

Phase 2 in Walton-le-Dale is in detailed design with construction expected to start in 2026.



Engagement events & activities held in the communities impacted or benefitting from the scheme

Providing flood protection
& better community
amenities



New and improved
defences



Homes & businesses better
protected from flooding



New sports pitches created
for the community

Providing better
economic growth &
education opportunities



Investment in Preston
& South Ribble



People have worked on
the scheme so far



Educational sessions
delivered in local schools

Protecting &
enhancing
the local environment



Trees to be planted for
every tree removed



SuDS programmes for
local schools



Hectares of new
wetland created

Areas 1A & 1B - Preston



Areas 2A, 2B and 2C – Lower Penwortham



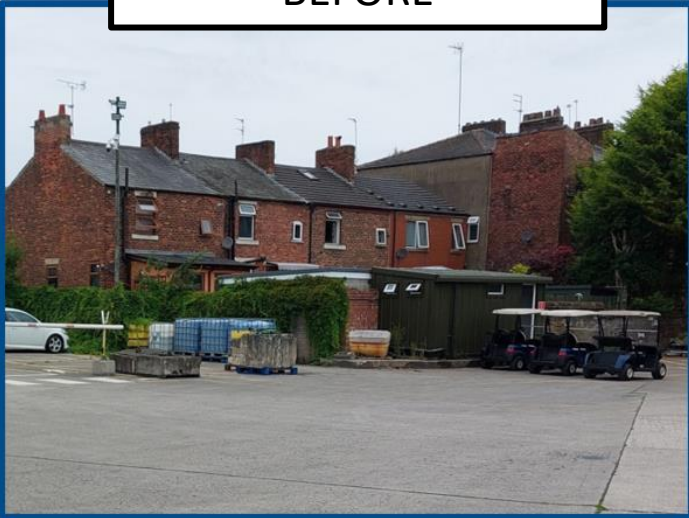
Areas 3&4 Walton-le-Dale – example visualisations



BEFORE



AFTER



To find out more and keep up-to-date with the Scheme

- **Look at our website** - You can find more information and download our newsletter on our website www.thefloodhub.co.uk/psr
- **Download the Engage App** - We post regular updates on the VolkerStevin Engage App. Use the QR code below to download or visit your App Store and search 'VolkerStevin Engage'. You can also use the App to ask questions and to provide feedback.



Working with Schools

- The Scheme has received £900,000 funding from the Department for Education.
- We have run educational sessions in schools and supported site visits.
- We delivered drainage improvements through SuDS at three local schools.
- In collaboration with Microsoft and Block Builders, we developed a Minecraft game called Rivercraft, based on the Scheme.

Drainage Improvements to Playgrounds

The Environment Agency has worked with three local schools, installing Sustainable Drainage Systems (SuDS) to improve surface water drainage in playgrounds:

- Frenchwood Community Primary, Preston
- St Mary Magdalen's Primary, Lower Penwortham
- St Leonard's Primary, Walton-le-Dale



Benefits for Schools

SuDS deliver benefits, including:

- Reduction of water entering the sewer system.
- Reduction of risk of the school flooding.
- Educational benefits on sustainability and climate change.
- Increased biodiversity on school sites.
- New opportunities for outdoor play and learning.



Sustainable Drainage Systems (SuDS)

Sustainable drainage systems (SuDS) can reduce surface water flood risk and improve water quality by:

- Capturing rainwater runoff to reduce flood risk.
- Storing runoff and releasing it slowly.
- Slowing the flow of rainwater to drains.
- Filtering out pollutants.

We have installed permeable surfacing, rainwater planters, water butts, living roof gazebo, trees and more.



We have also reinstated and improved playgrounds as part of our works.

Frenchwood



St Mary Magdalen



St Leonards



Minecraft

- Use with National Highways
- Why Minecraft?
 - Most successful game of all time!
 - 176M copies sold!
- The Education Edition
 - Used by 2 Million schools
- Selecting the Pilot...



What will it do?



- Available globally.
- Microsoft Education Edition.
- 1 Preston World, 3 games (Flood risk management, natural flood management & riverine ecology).
- It's a first for all of us.
- The Rivercraft Preston World!

