

Nottingham 2050 Energiesprong Homes



This project has received funding from the European Union's Horizon 2020 research and innovation programme under Grant Agreement No 646511

Content:

- Why?
- What is Energiesprong
- The Business Model
- Tenants & Results
- Challenges & Next Steps

Why?

- 2050 targets
 - Solid wall insulation industry boom and bust
 - Performance Gap - Unclear responsibility / liability
 - Split incentive – we pay, tenants save
-
- EWI warranty issues
 - Measures last 30 years, but installed to current, not future standards
 - 30 year plan – by the end of which we need to have low carbon ‘2050 Homes’



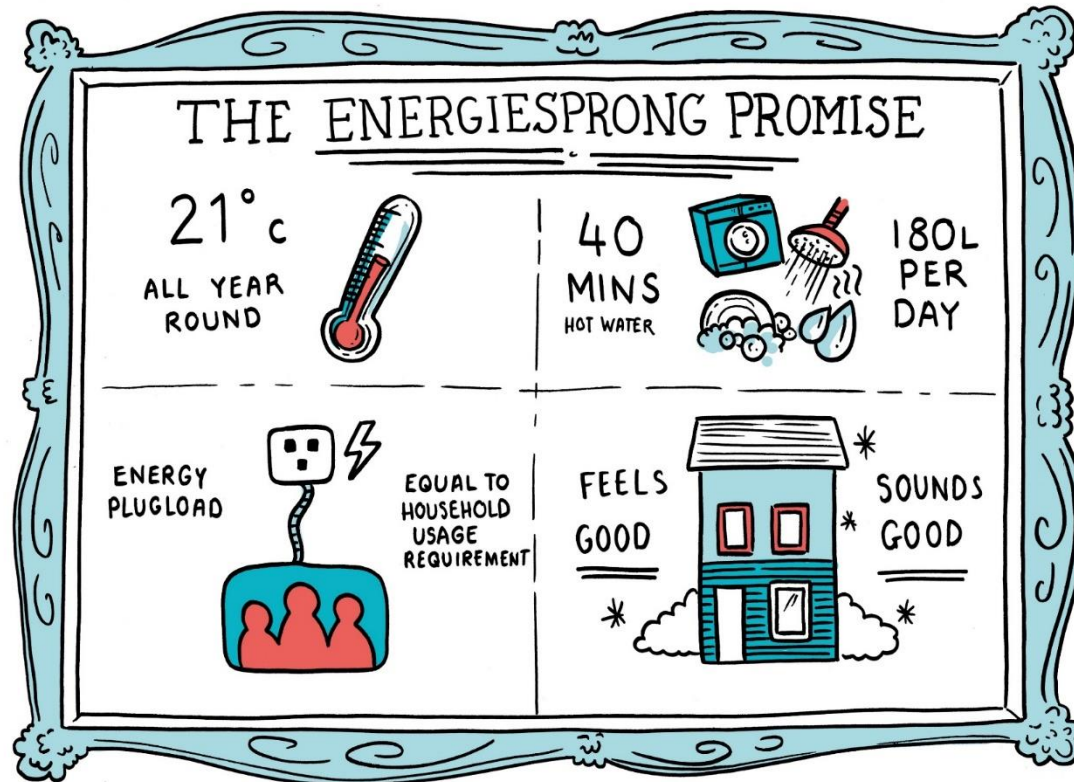


Interreg 
EUROPEAN UNION
North-West Europe
E=0
European Regional Development Fund

*Energie
Sprong
uk*



Focusing on people



Easy to understand
product with

- Guaranteed comfort
- Fixed monthly cost
- Outcome not output

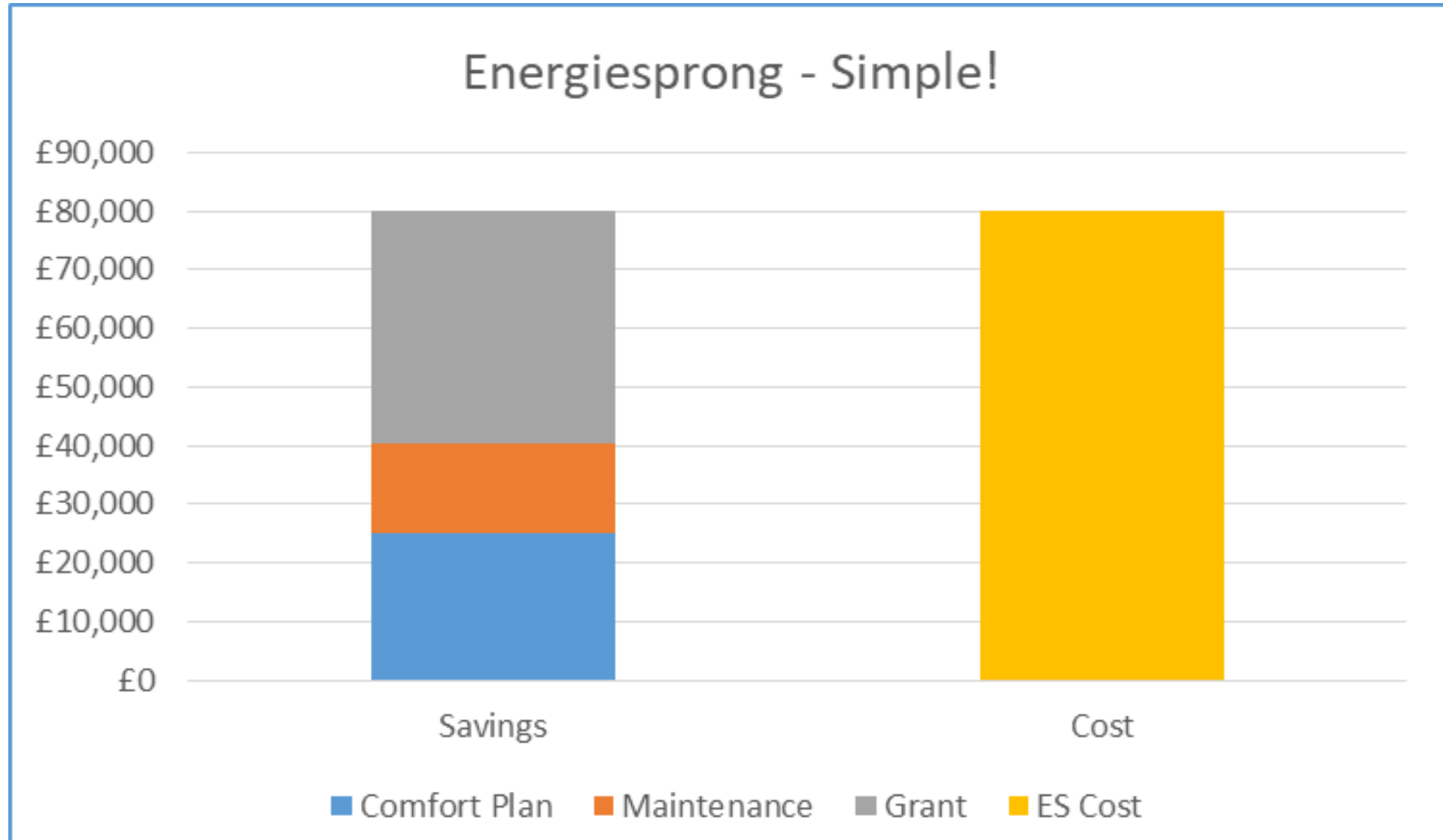
> Guaranteed Performance Outcomes

Property	Performance Level
Thermal performance	<30 kWh/m2
Hot Water	140 litre @ 45°C
Heating Levels	21°C/18°C
Net Consumption	Zero to 1,500 kWh
kWh Allowance	2,300 kWh
Noise in-property services	<30dBA
Noise outside	<42dBA
Summer overheating	26°C bedrooms < 300 hours per year 28°C living room < 300 hours per year
Monitoring	Live/historical temperature, hot water and electricity consumption
Humidity & CO2	New build ACH rate
Installation time	<10 days

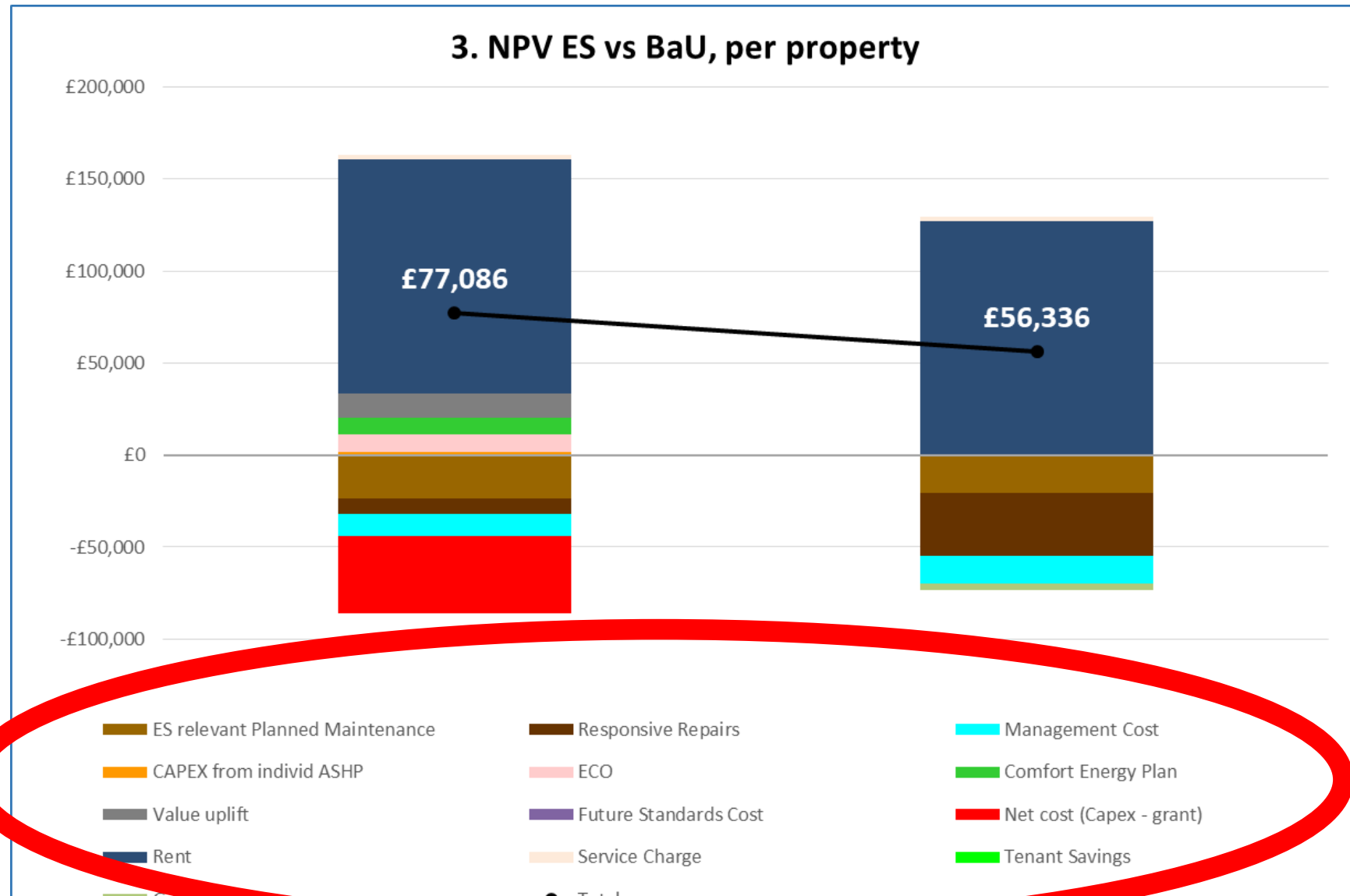
What is Energiesprong

- Major energy improvement
 - 2050 standards now; targeting net zero energy
 - Procured performance (not measures)
 - Monitored, not modelled
 - 30 yrs
- Funded by....

> Business Model: Basic concept



> 'Full' Model.....



Tenants & Results: Procurement Kick-off



Tenants & Results:

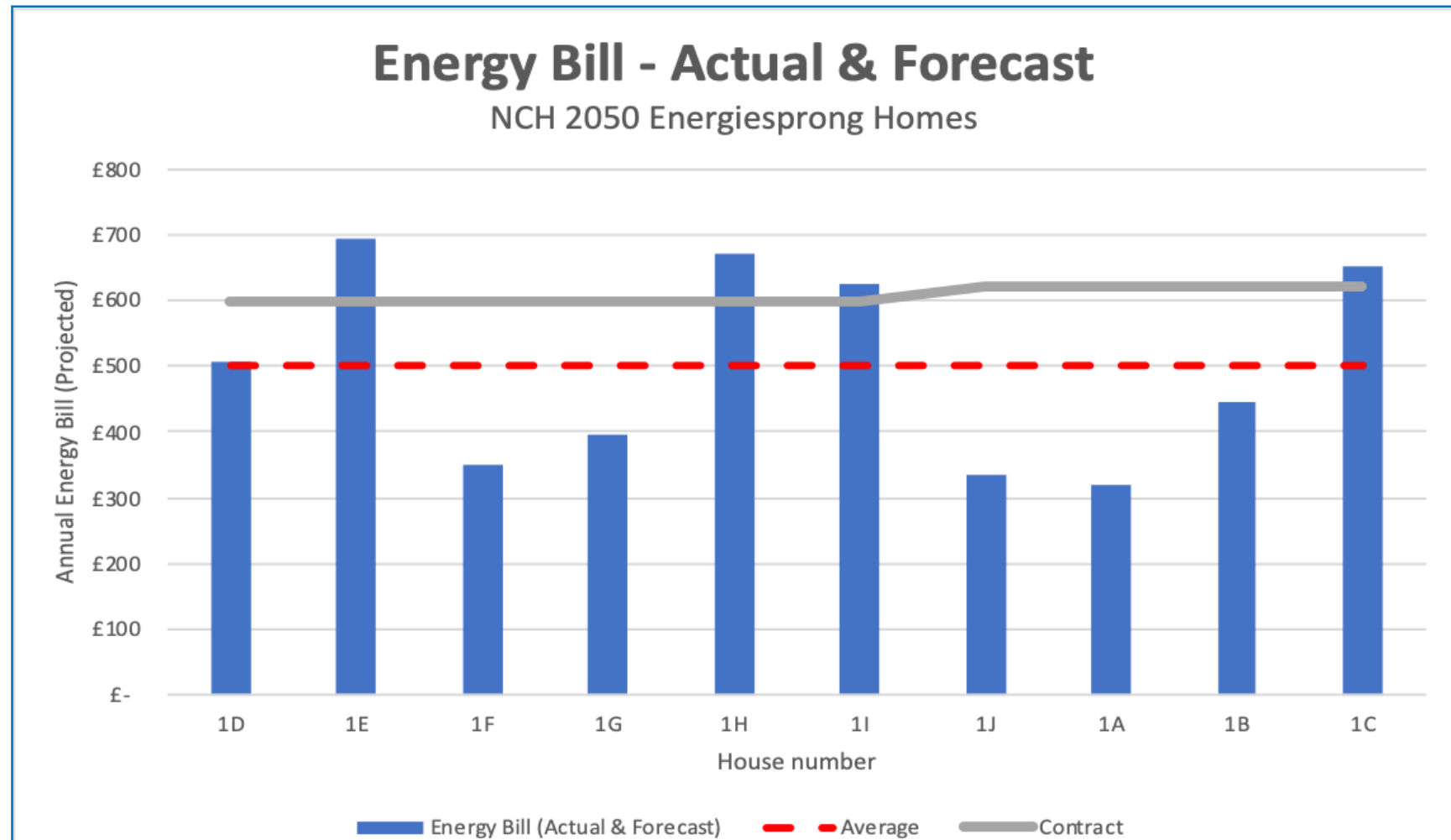


Tenants & Fuel Poverty

- Calculated energy costs c.£1800 per year
- 'Typical' energy spend c.£600 – the reality of fuel poverty
 - Very large variation!
- Everyone complained of cold, draughty homes
- Tenants with gas capped, disabilities, elderly, hoarding

Bills now.....

- Current estimated average c.£500 per year – for all energy (including the Comfort Plan)!



Issues and Challenges:

Making 'communal' work

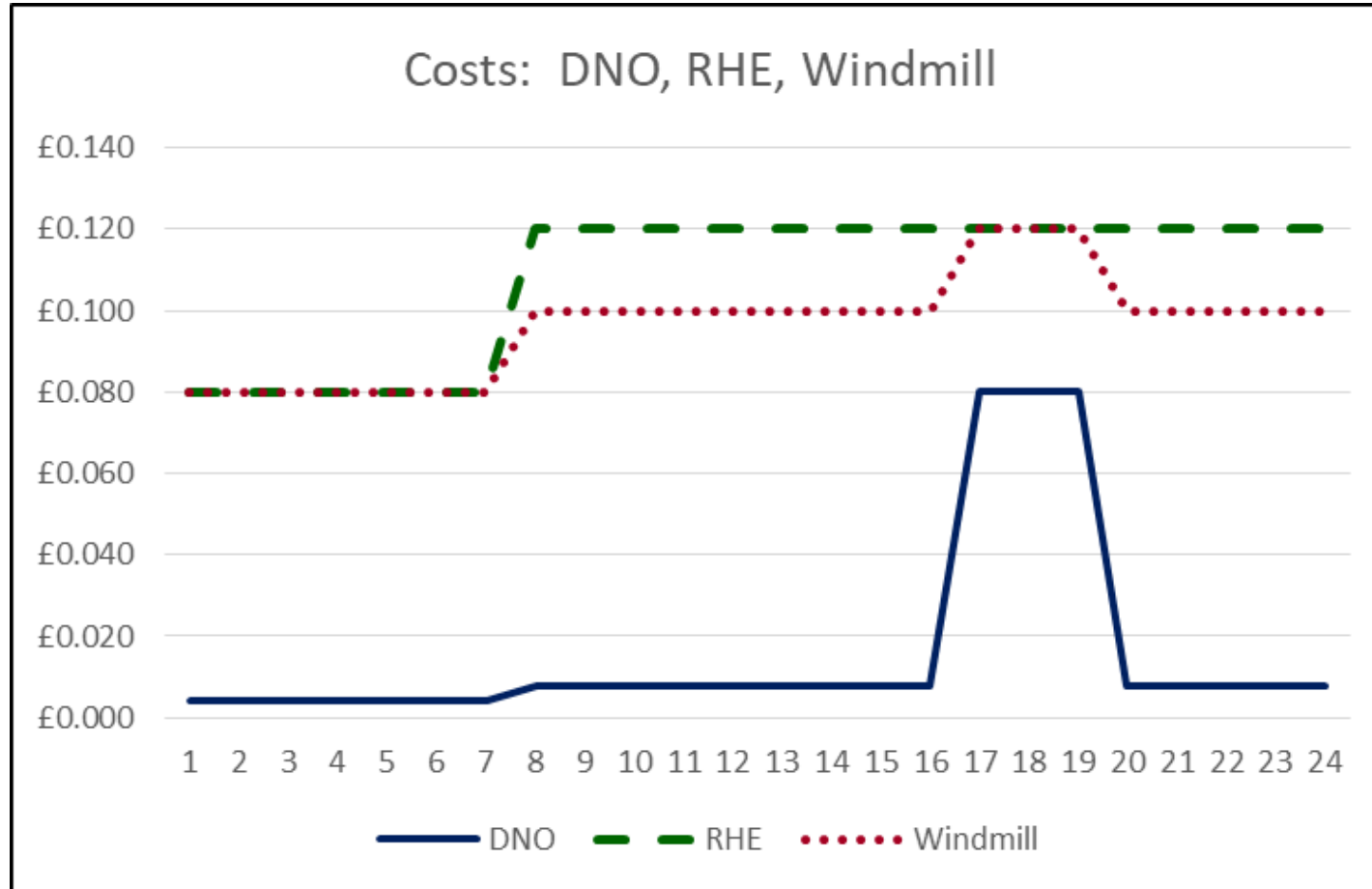
- 10 homes have an electricity connection at £91 each so total cost of £910.
 - So how much is the standing charge for our communal connection?

Issues and Challenges:

Making 'communal' work

- 10 homes have an electricity connection at £91 each so total cost of £910.
 - So how much is the standing charge for our communal connection?
- £2,300!
 - But we are working through this....

Challenges and opportunities!



Ambition & Principles

- Ambition
 - Big investment – so big ambition for project
 - Better lives – not just warmer houses!
- Principles
 - Take the tenants with us
 - Design, procurement, delivery, and post works
 - Collective journey – not just about what NCH are doing to our buildings



Thank you: Arnout Andrews, 07495 339 736, arnout@Adecoe.co.uk