



A Siemens Company

# Confirm & Communities

[cherryanne.cooper@brightlysoftware.com](mailto:cherryanne.cooper@brightlysoftware.com)

[roger.leverett@brightlysoftware.com](mailto:roger.leverett@brightlysoftware.com)

Version 1.0 | 16 March 2024



Smarter assets, sustainable communities.

© 2024 | Brightly Software CONFIDENTIAL

# Introducing



**Cherryanne Cooper**  
Account Director,  
Northwest & Northeast

Manchester Inward  
Investment Agency &  
Public Organisations

Developing Growth  
Strategies and Net  
Zero.



**Roger Leverett**  
Product Consultant

21 Years working  
within Local  
Government

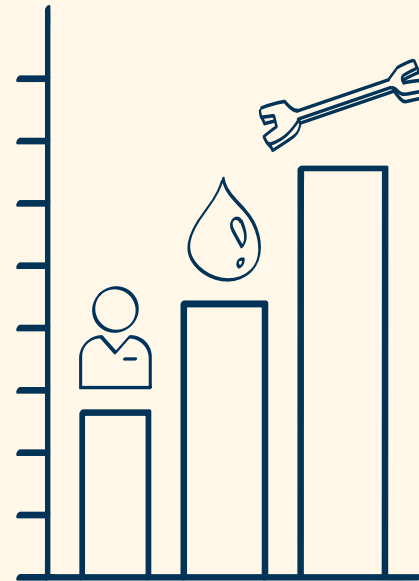
Managing and  
Developing Parks  
and Greenspace &  
Street Cleansing



# The journey starts with a focus on what matters to you



Ensure smart investments in your assets

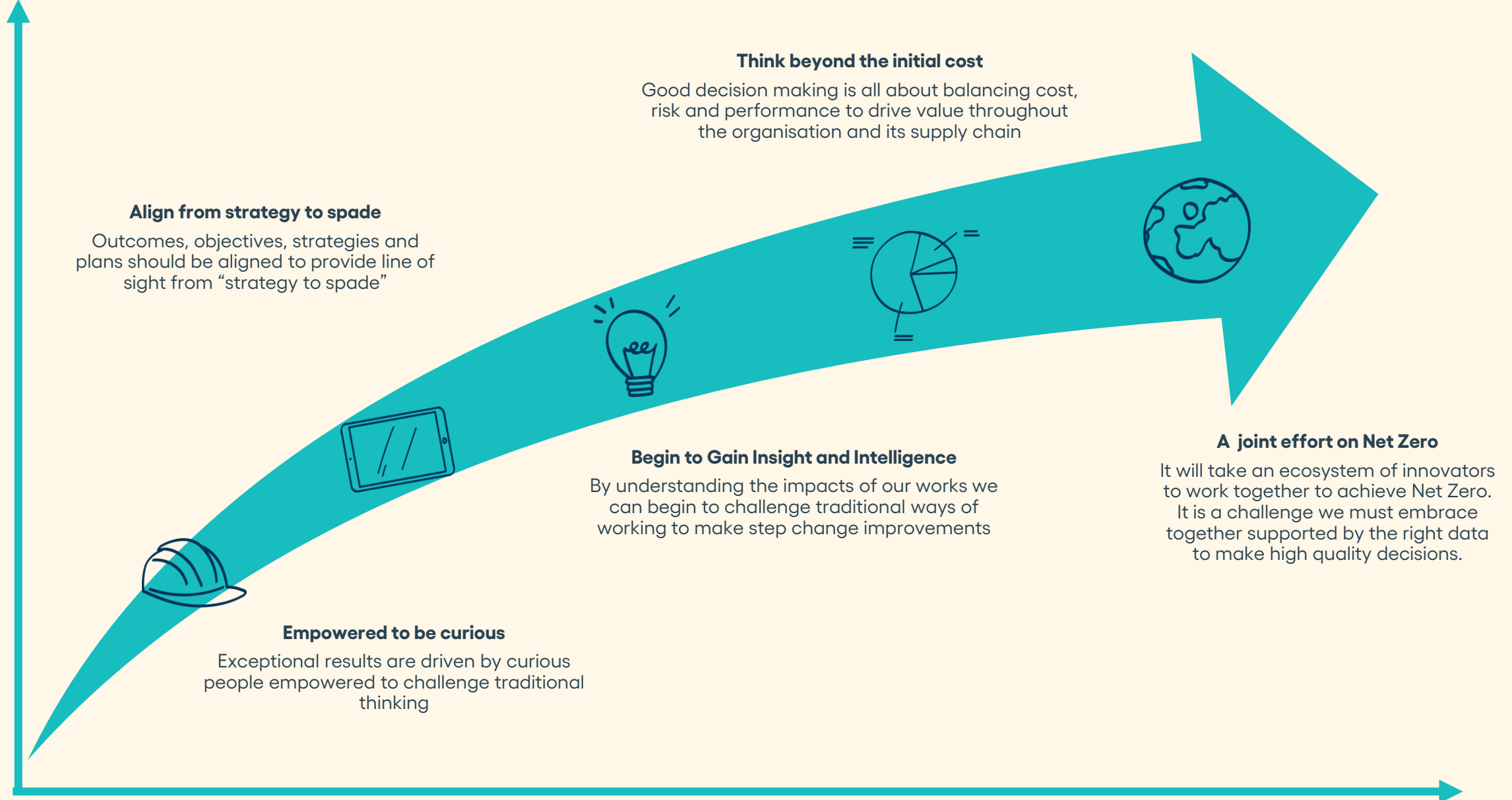


Efficiently prioritize cost of operations



Create sustainable, safe and thriving communities

# The Journey to Net Zero



# Carbon Emission Calculation

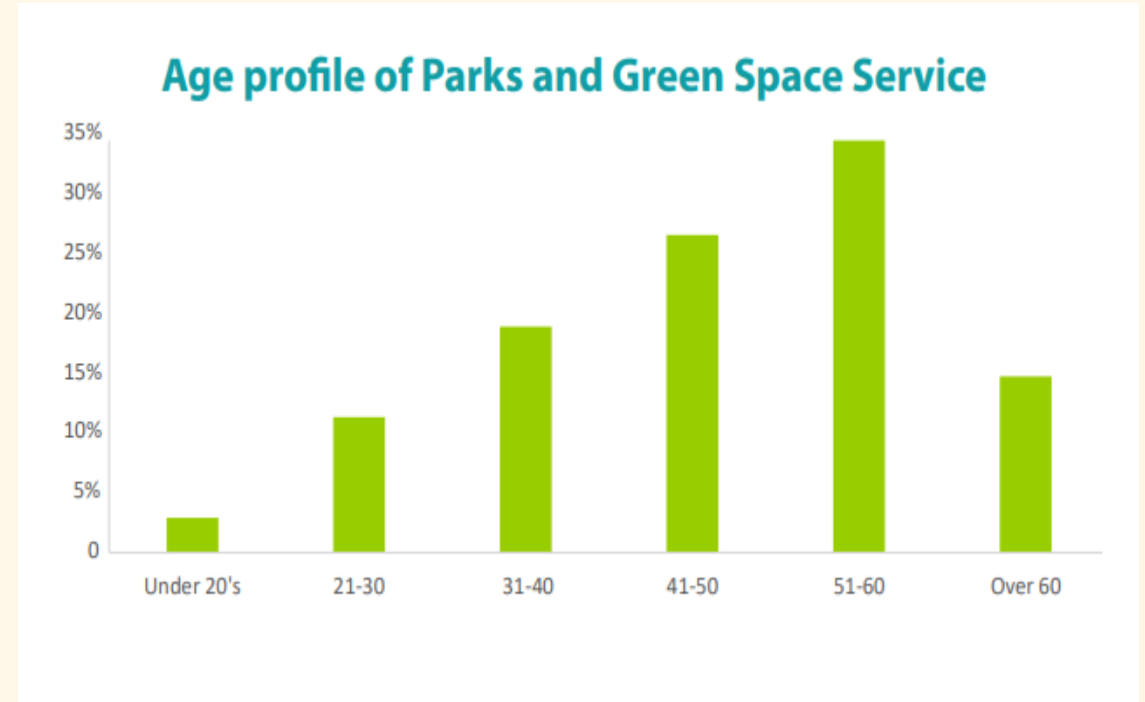


## Two Questions....

**“How do we restore habitats, provide equal access and manage expectations with shrinking budgets, reduced capital improvements, increasing park usage and net zero goals?”**



**“How do we retain the ‘unwritten knowledge’ within our sector?”**



**Source: APSE State of UK Public Parks 2021**





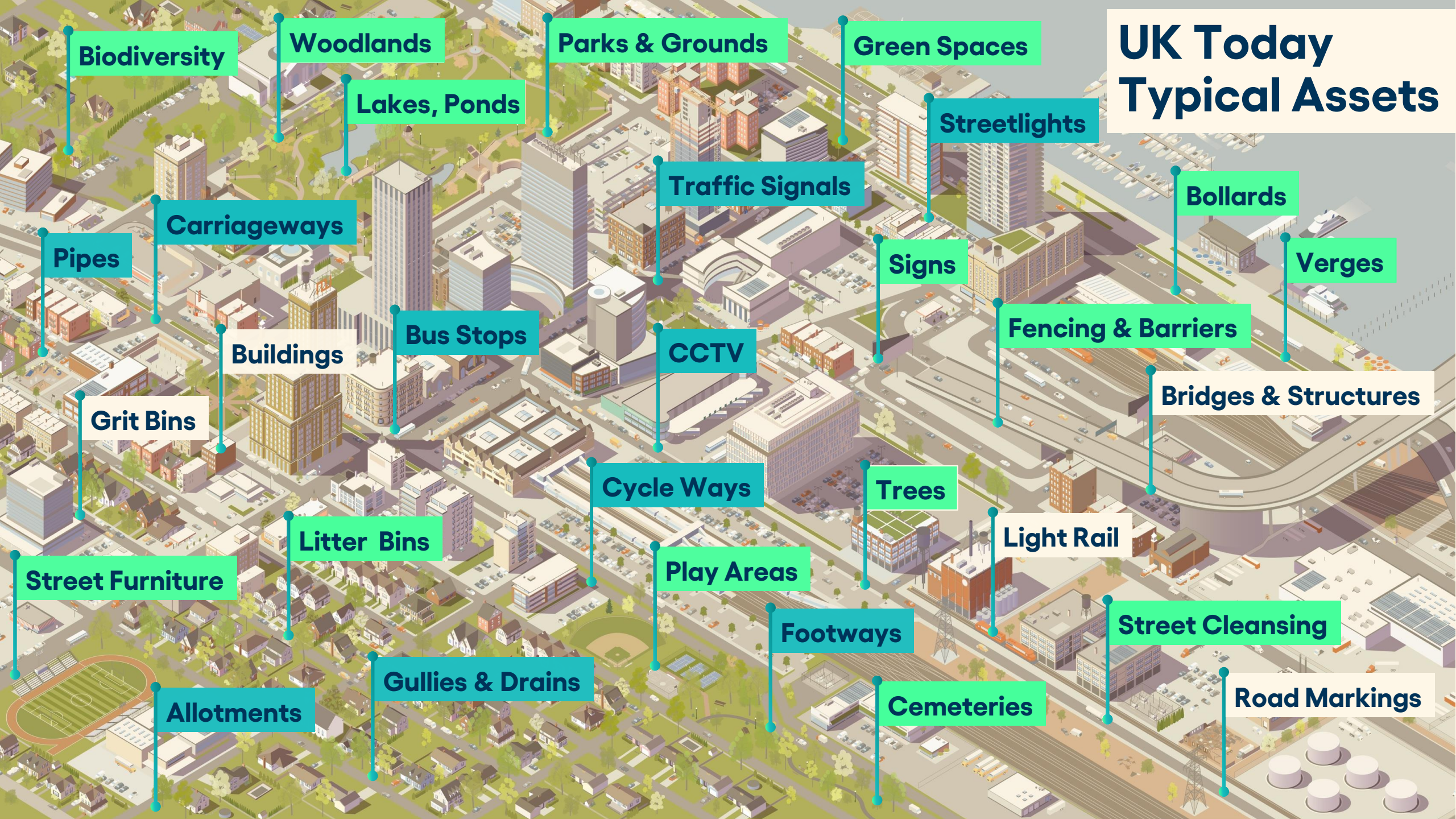
# Introducing **Assets. United**

- Single Source of data
- Digitised Information
- Improved asset maintenance planning
- Identify Improvements
- Mitigate risks
- Sustainable Assets & Healthy Communities





# UK Today Typical Assets



Biodiversity

Woodlands

Parks & Grounds

Green Spaces

Streetlights

Lakes, Ponds

Traffic Signals

Bollards

Verges

Carriageways

Pipes

Signs

Fencing & Barriers

Bridges & Structures

Buildings

Bus Stops

CCTV

Grit Bins

Cycle Ways

Trees

Light Rail

Litter Bins

Play Areas

Footways

Street Cleansing

Street Furniture

Gullies & Drains

Cemeteries

Road Markings

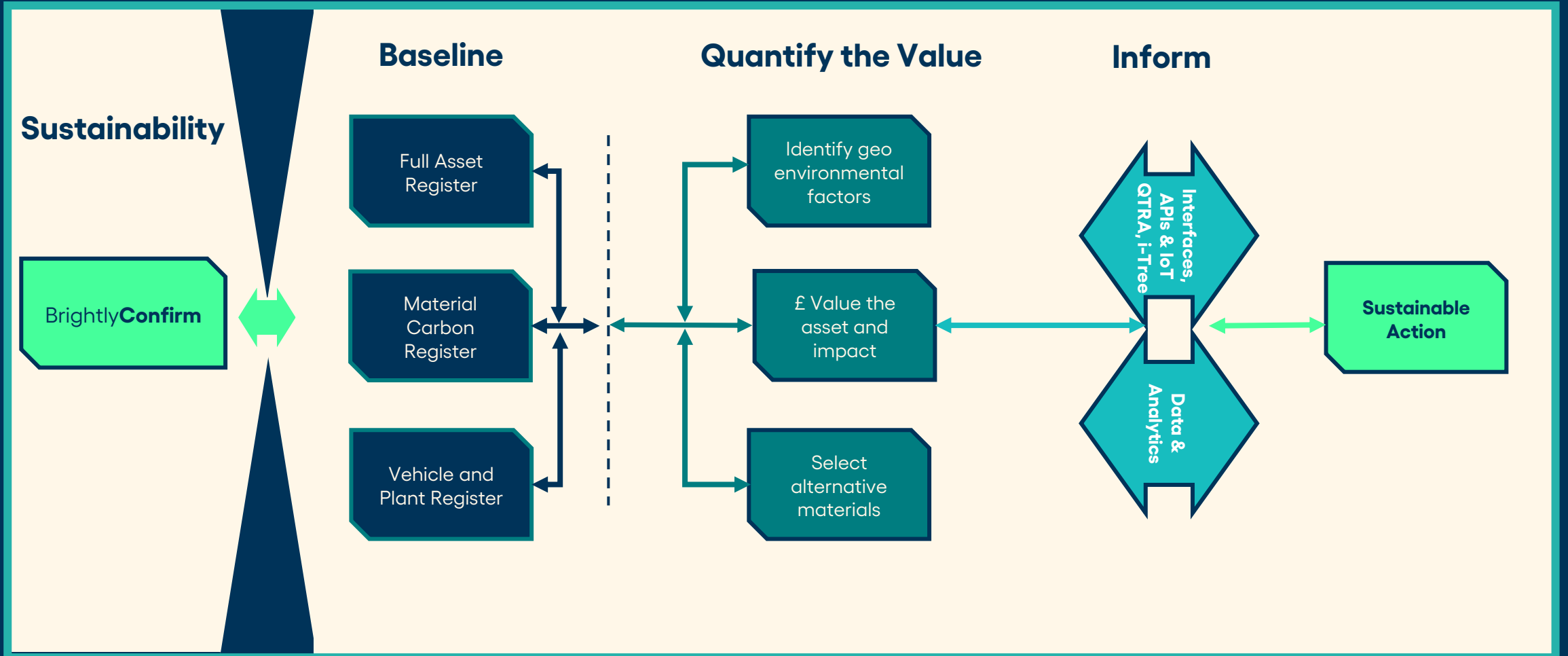
Allotments



# Sustainability



# Summary





## Brightly Confirm

- Thank you
- Smarter assets,
- Sustainable communities



**Thank you**

 Brightly





# Roger Leverett, Product Consultant

**21 Years working within Local Government**

**Authorities include**

- City of Stoke-on-Trent
- Cheshire East
- Telford & Wrekin Unitary

**Experience**

- BSc (Hons) LCGI Environmental Studies
- Parks Management Association Member
- QTRA risk assessment
- Former Highways Inspector
- Ash Dieback

