



Bristol City Council's Joinery Shop

Laura Pilkington & Daron Campho
16th January 2020



Bristol City Council's Joinery Shop



- Serving Bristol for over 50 years
- Operating almost exclusively for Bristol City Council
- Manufactures a full range of high quality joinery products
- Providing joinery for the Response & Planned Maintenance of the housing stock
- Produces specialist items for other departments



Bristol City Council's Joinery Shop



- Currently located in the Centre of Bristol
- The site has been in Council ownership since 1700
- Established as a Joinery Shop after the Second World War
- Bristol's largest purpose built Joinery Shop
- Due to increasing demands, we are planning to relocate to larger premises





The Joinery Shop





The Treatment Tank and Paint Shed



The current team

21 staff

- 2 managers
- 8 joiners
- 4 machinists
- 3 painters
- 2 support operatives
- 2 apprentices



Apprentices

- Proud track record with our apprenticeship programme
- Supportive learning environment
- Apprentices receive Awards
- Several qualify for the Skills Build Competition
- Succession planning



Improvements to service delivery



- Technical support for teams across the Council
- 2018 ironmongery store set up for the Carpentry Team
- 2018 increased painting for Response Joinery to improve customer satisfaction
- 2019 increased painting on Fire Door Programme to protect new doors and frames on open walkways
- Deliver joinery training for the Carpentry Apprentices
- Provide work experience to students & young adults
- 2019 provided Fire Safety Overview Training to carpenters, surveyors and site supervisors in conjunction with Lorient.



Performance

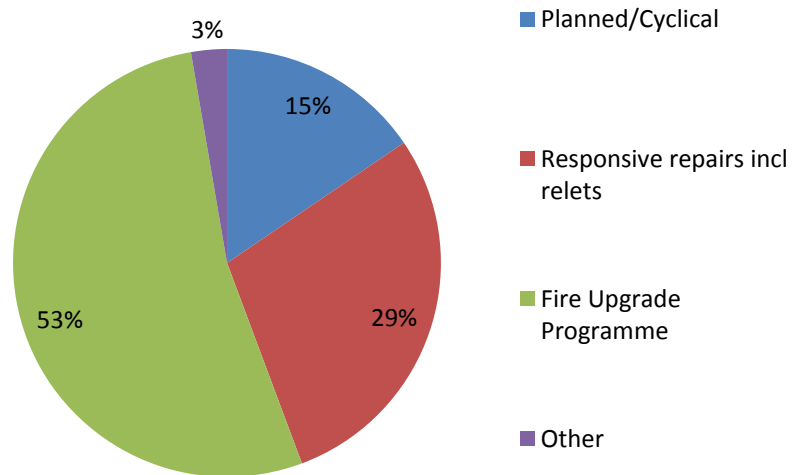


Financial Year	No. of units manufactured (doors or frames)	Value of all products manufactured
2016/17	2803	£1,139,000
2017/18	3570	£1,397,000
2018/19	4927	£1,816,000

- 2019/20 value to date is £1,653,838
- Overtime is the current solution to our capacity constraints



Programme of works



- Fire door range
- External door range
- Internal doors
- Door frames
- Canopies
- Stair kits
- Architraves / Skirting
- Windows
- Screens



The products



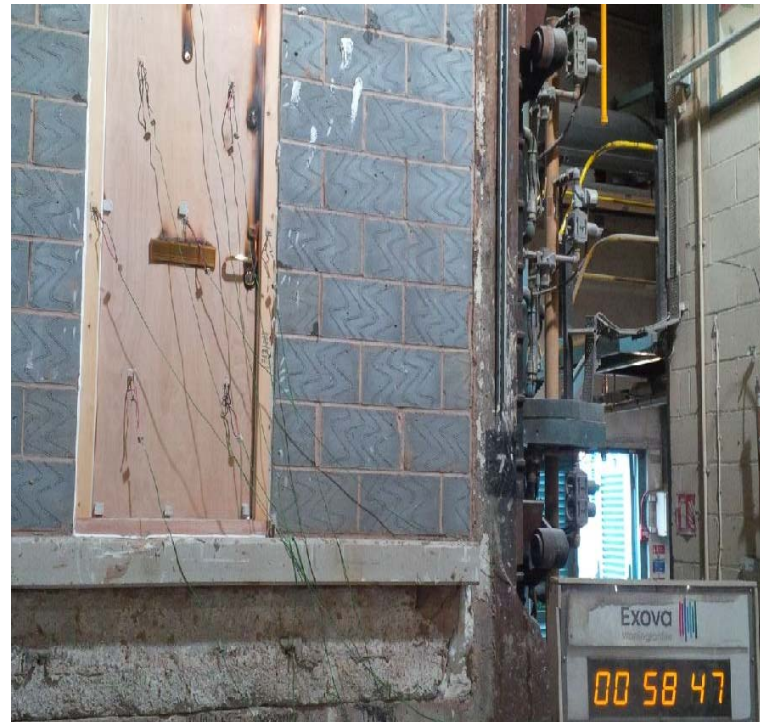
The 30 minute fire door

- A full range of 30 and 60 minute fire doors
- Manufactured to a Global Assessment
- High spec design for fire and security
- Spec following collaboration between the Joinery Shop, BCC's Fire Safety Team, Building Control and Fire Services Authority
- Minor amendments to spec following testing of changes & risk assessment for situation



The 30 minute fire door

- Regularly tested since 2013
- Independent test in 2017 showed our 30 minute door remained intact for over 58 minutes
- Commendation from Avon Fire Services
- Positive feedback from independent fire safety reports following the Grenfell tragedy
- Evidence from individual fires



The Reality



Next steps - fire doors



- Currently preparing for TRADA accreditation
- Encompassing the recommendations of the Grenfell Enquiry and anticipated outcomes of Phase 2



Future Opportunities



- New premises with double the space
- Improved production line
- 16 benches with space to expand for new work streams
- Increased staffing levels
- Extended operational hours
- Design to encompass impact on climate change



Commercialisation plans



- Establishing a trading account
- Project plan to move location (including costings)
- Researching the market
- Recruitment for additional joinery staff
- Marketing





Future offer

- Supply proven quality Fire Door Sets to other Housing Providers
- Supply to New Build Developers
- Increase in house delivery for Planned Programme projects
- An accessible joinery service to all departments and private customers
- Manufacturing non standard, high spec joinery items to order



The Future Bristol City Council Joinery Shop



- New spacious & efficient Joinery Shop
- Increased income generation
- Open up new work streams
- Acquire new external customers

Exciting times ahead!



Thank you



Any questions?

