



Building Networks for Nature

partnerships for nature recovery in West Cheshire

Chester Zoo

Sean Clement – Project Manager, Networks for Nature

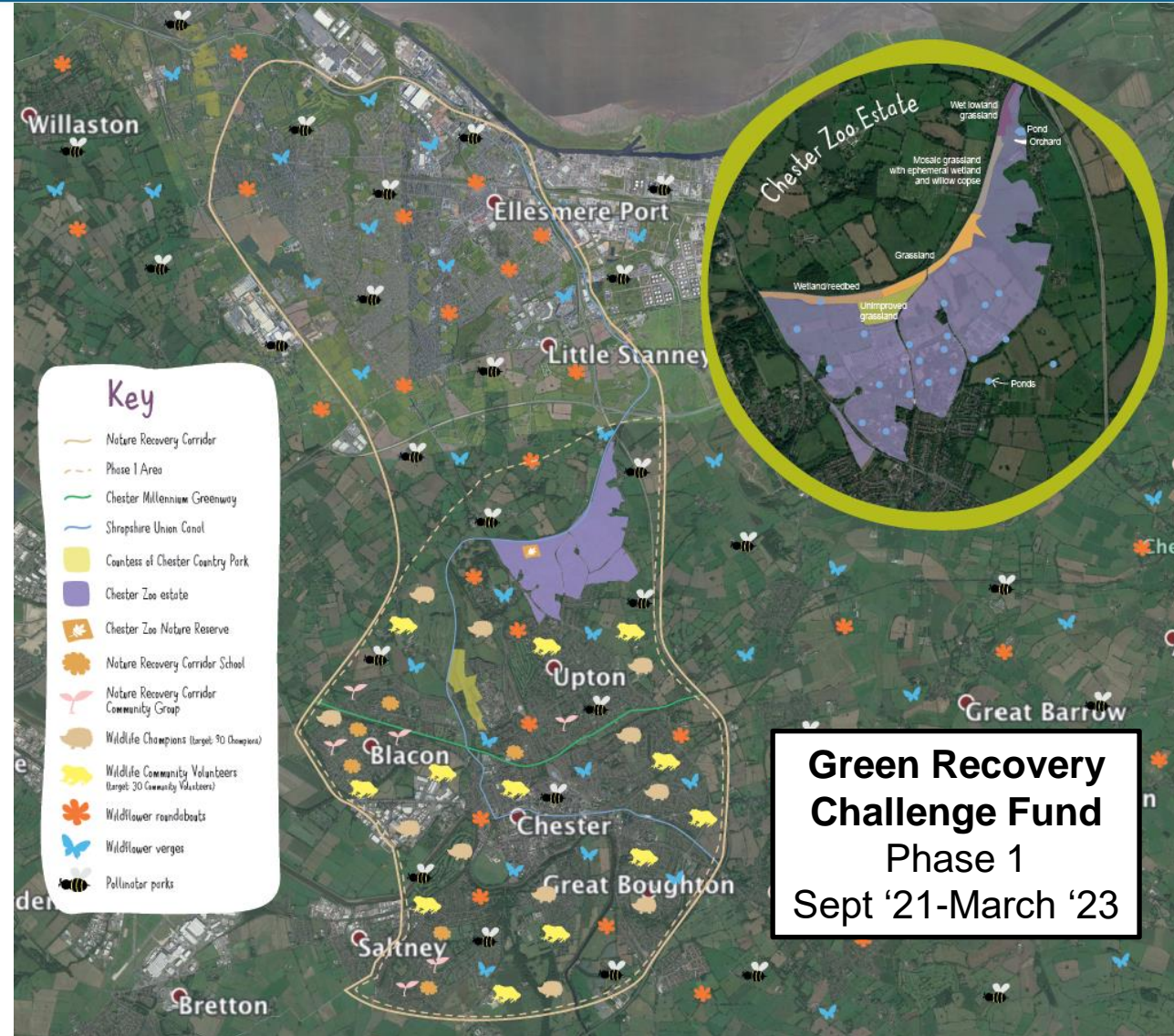
Green Recovery Challenge Fund



- **Nature Recovery Corridor**
 - Overview
 - Impacts
 - Outcomes

- **Networks for Nature**
 - Vision
 - Objectives
 - Building partnerships

Nature Recovery Corridor

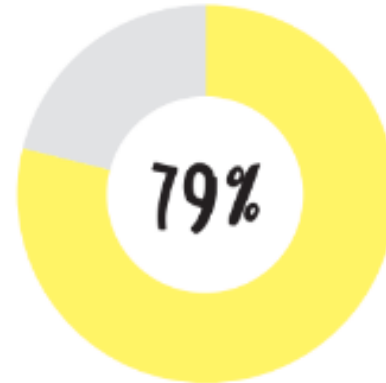




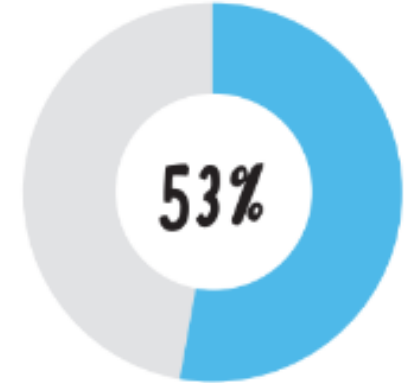
The NRC sits within the borough of **Cheshire West and Chester**, in the Northwest of England, covers an area of approximately **90,000ha** and has a population of approximately **357,147** (3).



Chester with a population of over **81,000** residents is the largest settlement within the borough as well as an important hub for employment and tourism (4).



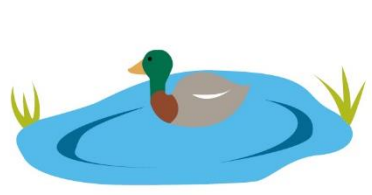
79% of Chester residents reported that they felt very or fairly strongly that they belong in their local area (5).



53% of residents definitely or tended to agree that people in the local area pull together to improve the area (5).

WITH GRCF FUNDING WE HAVE BEEN ABLE TO

Improve over **62 HECTARES** for wildlife including:



Eight ponds

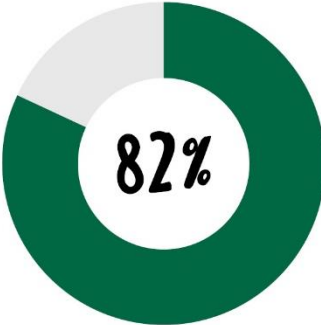


24ha wildflower meadows

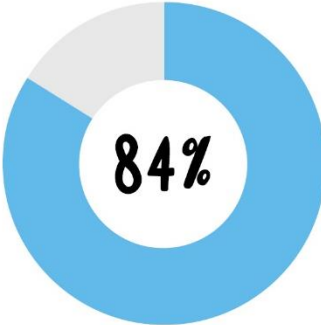


15ha of grassland

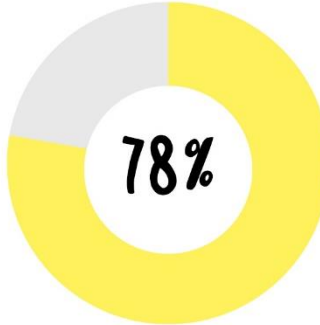
Over 12,000 people have been directly engaged in the project. Many of them were involved for the full duration of the project and were supported to build skills, knowledge and agency to be empowered to continue to protect and improve spaces for wildlife after the end of the project.



82% of participants reported improved wellbeing



84% gained new knowledge



78% reported an increased connection to nature

Zoo estate habitat improvements



Ponds



New pond before



New pond after

Hedges



Hedge before



Hedge after

Reedbeds



Reedbed before enhancement



Reedbed after enhancement

Lowland wet grassland



New scrape



Scrape naturally filled Oct 2022

Partner habitat improvements



Grassland/meadow

- 11.2 hec within Phase 1 area
- 53.9 hec across the whole borough

Invasive species

- management (from canoe)
- Pennywort – 4 hectares
- Hedgerows – 300m
- Community nature areas & wildflower areas – 0.28 hectares

Reedbed improvement – 0.45 hectares

Woodland improvement – 1.08 hectares

Wildflower meadow creation – 4.05 hectares

Wetland scrapes creation – 0.14 hectare

Habitat improvements along the Greenway with community involvement. Including wildflower areas, bulb planting and bug hotels – 4 hectares

Creation of nature area at Limewood fields – 1.5 hectares

Accessibility: boardwalk & benches



We aim to give Cheshire communities a stronger voice by engaging and supporting them to influence the places, spaces and services that are important to them.



Cheshire West & Chester Council

This area has been planted with native wildflowers to boost biodiversity

They will provide food and shelter for insects and pollinators like bees



scan the code for more information



Visit: [cheshirewestandchester.gov.uk](https://www.cheshirewestandchester.gov.uk)



Cheshire West and Chester



Community groups



Schools



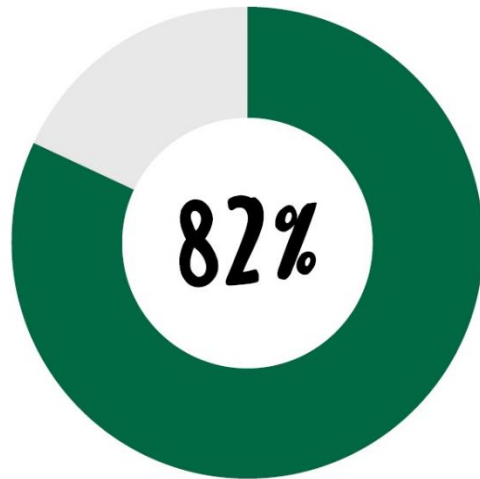
Wildlife Champions



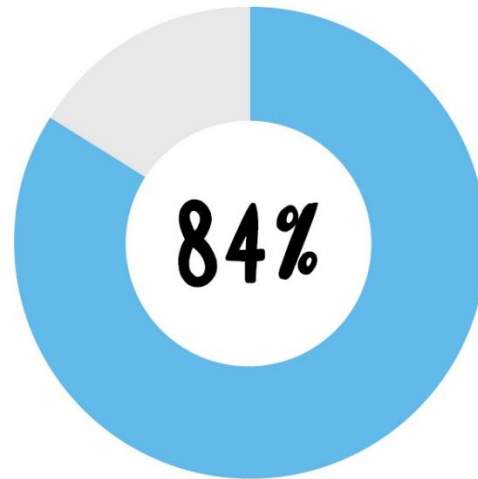
Wider public engagement & community volunteering



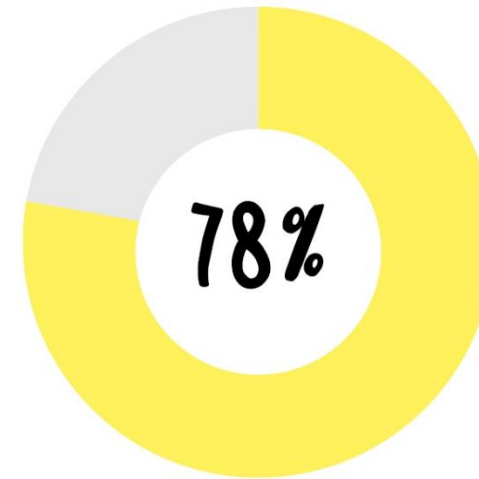
Over 12,000 people have been directly engaged in the project. Many of them were involved for the full duration of the project and were supported to build skills, knowledge and agency to be empowered to continue to protect and improve spaces for wildlife after the end of the project.



82% of participants reported improved wellbeing

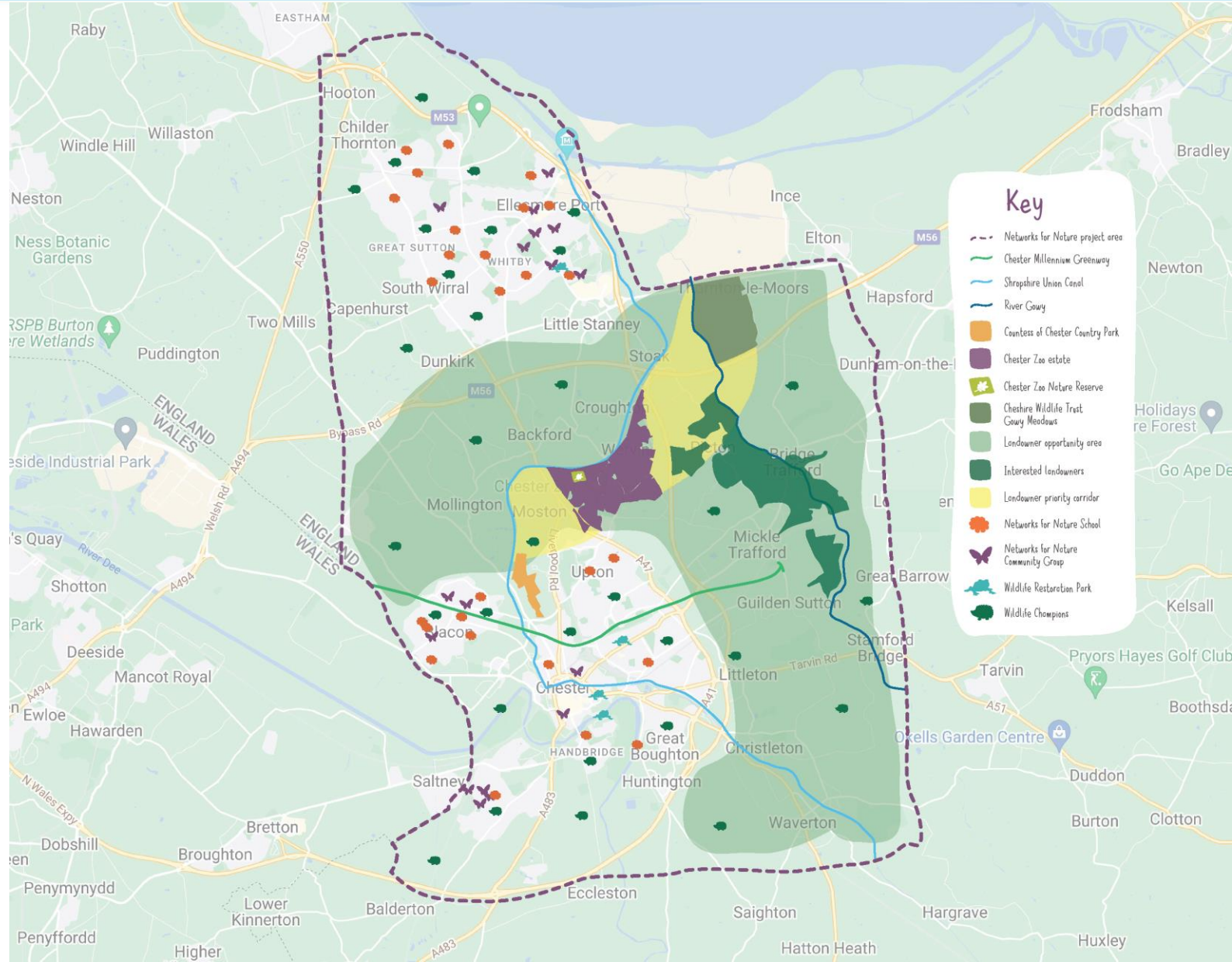


84% gained new knowledge



78% reported an increased connection to nature

Networks for Nature





Make nature more accessible to and inclusive for everyone to enable connection and improve wellbeing.



Optimise collaborative working across regional stakeholders to establish a strong partnership to support the legacy of Networks for Nature.

Drive nature recovery in a mixed-use landscape, creating diverse habitats for species



Empower more people to have an active role in conservation action and stewardship to create and grow biodiverse habitats.







Thank you for listening!

S.clement@chesterzoo.org