



NWSRG
NATIONAL WINTER SERVICE RESEARCH GROUP

nwsrg.org

NWSRG - LOOKING TO THE FUTURE

Carol Valentine
September 2023

Dedicated to advancing understanding of best practice for winter service delivery

Topics covered

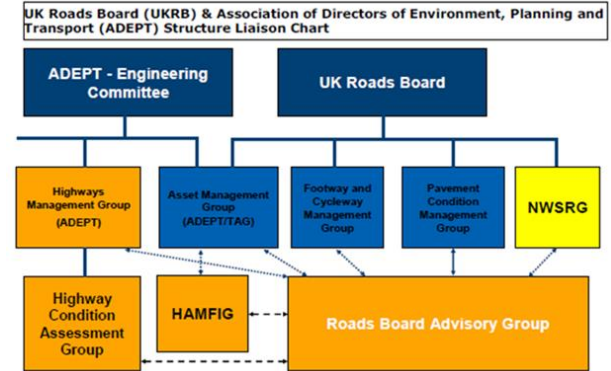
- About us – Who we are / Group structure
- Structural changes
- Guidance – winter service planning
- Risk based
- Research
- Going Forward

Change

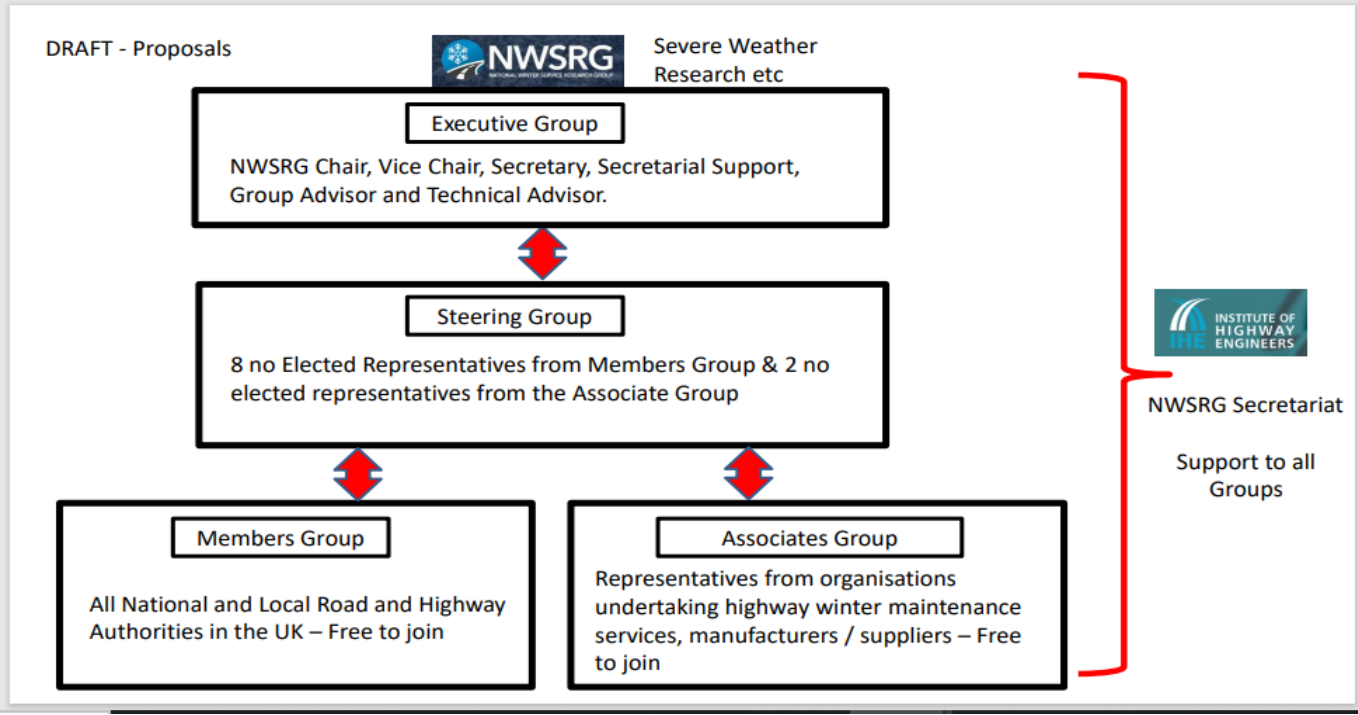


National Winter Service Research Group Pre April 2023

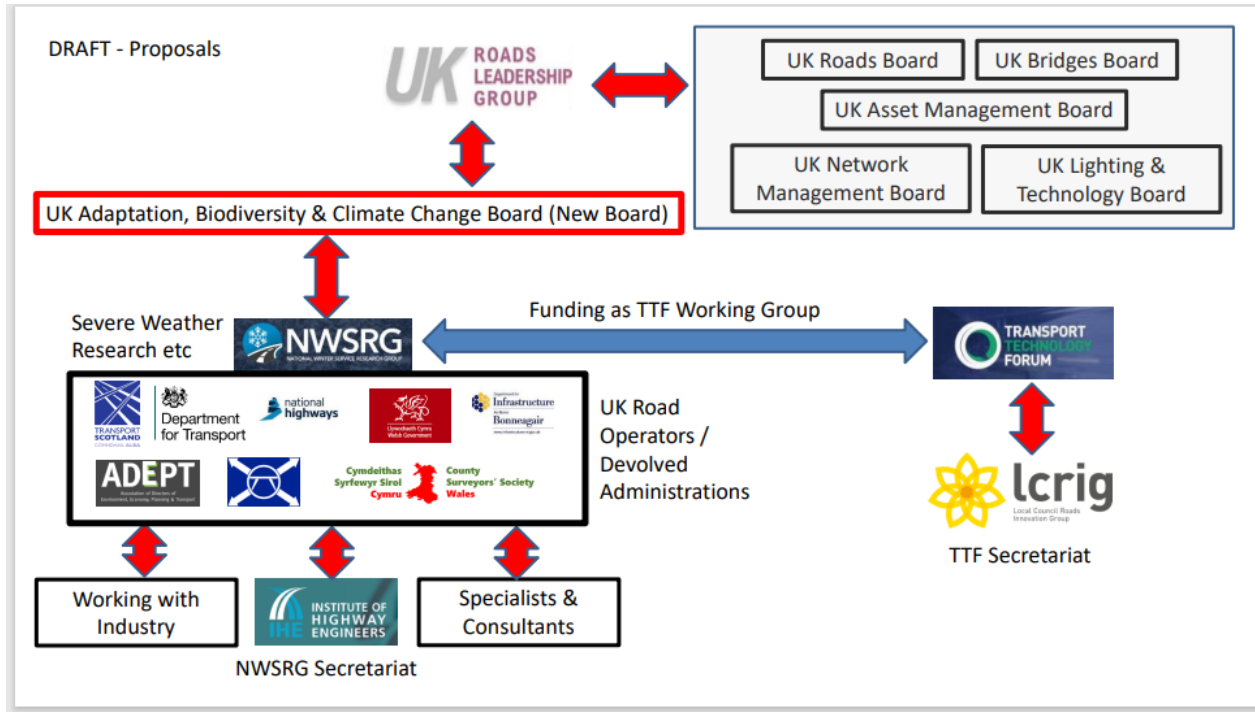
- Membership based organisation
- Funded by industry members £500 pa.
(previously LA and national highway authorities)
- Supported by the Winter Service Industry e.g. forecasters, equipment providers etc.
- Steering Group reports to UK Roads Board
- Publication of best practice guidance documents
- Integrated Technical Advisory Group with Steering Group
(Local and National highway authorities)
- Website updated
- IHE secretariat



NWSRG structure April 2023



UK Roads Leadership Group



Who are the main Contacts

NWSRG Executive

Carol Valentine –*Chair

Iain MacDonald – *Vice Chair

David Denner– *Secretary

Adrian Runacres – Technical Advisor

Cheryl Brown / IHE – Admin Support

Who are the main Contacts

Technical Advisory Group

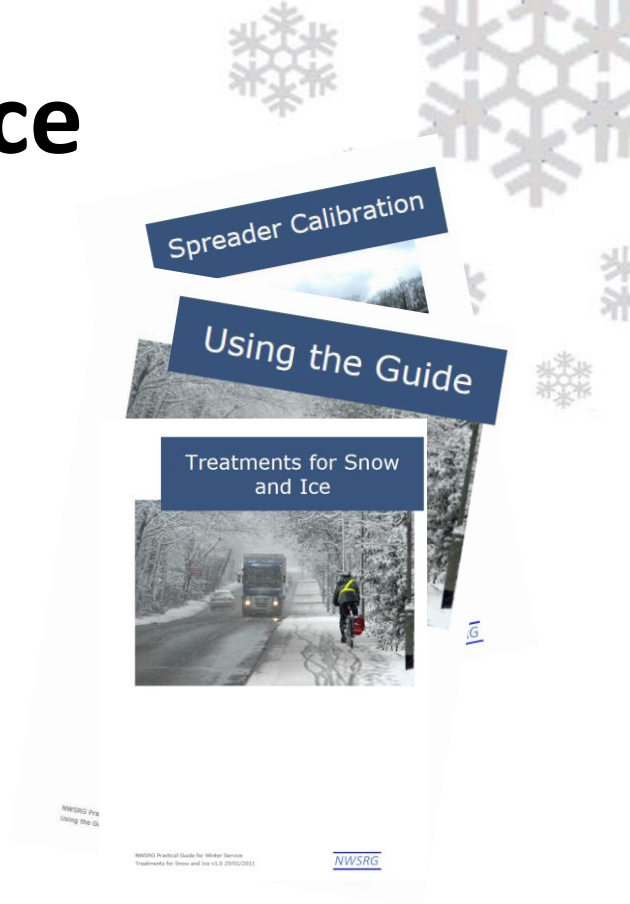
Joint chairs -

Mark Dutton – Safecote

John Meehan – Brine Solutions

Practical Guidance

- Comprehensive Guide to provide practitioners with practical guidance in all aspects of setting up and delivering their winter service
- All sections reviewed and published
- 5 year complete review of all sections
- Improved efficiency and effectiveness
- Budgetary pressures
- Claims!



Guidance Documents

- Foreword and Using the Guide
- Planning
- De-Icer Types
- Salt Storage
- Treatment Methods and Technologies
- Spreader Management
- Decision Making

Guidance Documents continued

- Precautionary Salt Spread Rates
- Treatments for Snow and Ice
- Treatments for Extreme Cold
- Footways and Cycleways
- Weather Forecasting and RWIS
- Route Selection and Optimisation

Well-managed Highway Infrastructure Part B

Issues for consideration in developing policy should include:

- Network resilience;
- Treatment of facilities for public transport users;
- Treatment of facilities for road users;
- Treatment of facilities for walking and cycling;
- Treatment for transport interchanges;
- Treatment of promoted facilities such as community or leisure centres;
- Extent of priority for emergency services;
- Extent of priority for key public services and critical infrastructure;
- Extent of priority for vulnerable users
- Resilience of winter service resources and other local circumstances

Risk-Based Approach

- Places emphasis on Authorities determining their own policies based on their individual local circumstances and risks
- Guidance is less prescriptive
- National Code Of Practice (Well-Managed Highway Infrastructure) and NWSRG Practical Guide focus on the matters that authorities need to consider
- Need to consider any updates to code

Research

- Reducing the environmental impacts of the winter service - desktop study,
- Utilising new and emerging Data Services to improve delivery of the winter service, desktop study,
- Improving winter service provision on footways and cycleways which will involve live trials. To run over 1-2 winter seasons.
- Further areas being developed

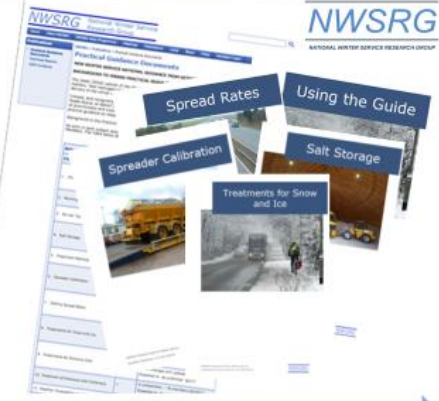


Future activity

- Business plan and constitution updates
- Best Practice guidance updates
- Research projects
- Scoping for future activity
- Working in new roads eco system
- Working groups – e.g., training, research

Existing guidance plan

- **Foreword and using the guide**
- Planning
- De-icer types
- **Salt Storage**
- Treatment methods and Technologies
- **Spreader Calibration**
- **Salting spread rates**
- **Treatments for snow and ice**
- **Treatments for extreme cold**
- Treatment of Footways and Cycleways
- Weather Forecasting and RWIS
- Route Selection and Optimisation

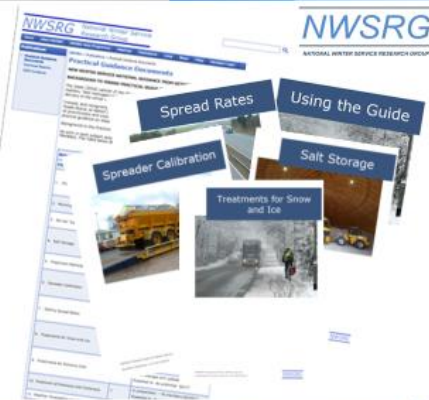


Discussion

- Research – what should we be looking at?
- What are your key issues as winter service practitioners?
- How are you being affected by budget cuts?
- Have you trialled any new technology e.g., sensors?
- How have you used the guidance?
- How could the guidance been improved?

Existing guidance plan

- **Foreword and using the guide**
- Planning
- De-icer types
- **Salt Storage**
- Treatment methods and Technologies
- **Spreader Calibration**
- **Salting spread rates**
- **Treatments for snow and ice**
- **Treatments for extreme cold**
- Treatment of Footways and Cycleways
- Weather Forecasting and RWIS
- Route Selection and Optimisation





NWSRG
NATIONAL WINTER SERVICE RESEARCH GROUP

nwsrg.org

Thank you

Any questions?

Dedicated to advancing understanding of best practice for winter service delivery