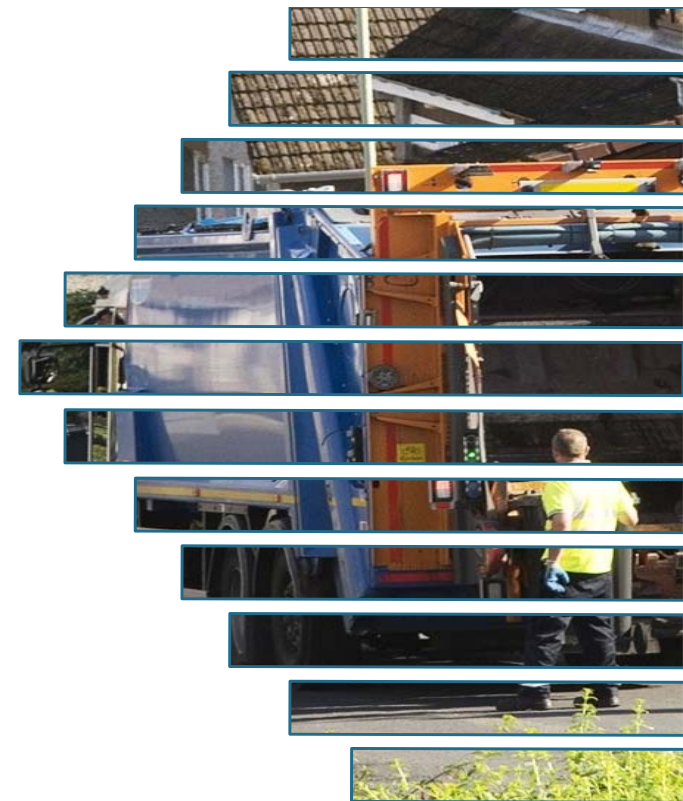


Deposit Return Schemes: What are the lessons from Scotland?

Charlie Devine
Service Manager

WASTE STRATEGY TEAM – NEIGHBOURHOOD SERVICES



What's coming up?

- The overall purpose of introducing a DRS system
- The materials and containers included in the system
- The practicalities of implementation
- The impact on local authority recycling services and collections
- How to find out more

What's the purpose?

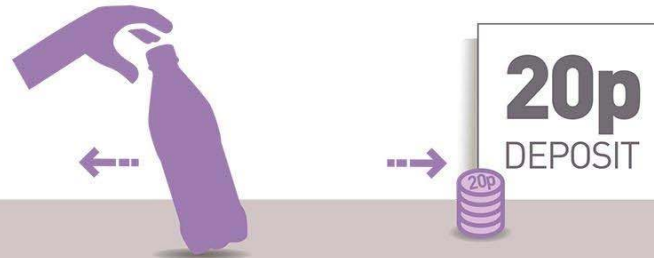
- Higher capture rate of key materials
- Maximising environmental, economic and carbon benefits via a circular solution
- Addressing concerns of frequently littered items and wider local environmental quality issues
- Drive positive consumer behaviour change
- Underpinned by extensive research, a formal public consultation, a full range of impact assessments & a robust business case
- System designed to make participation simple and accessible

What Materials are Included?

- Single use beverage containers from 50ml to 3ltrs
- All in system inc. PET bottles, metal cans and glass bottles
- Development of a comprehensive network of return points
- Regulated by the SEPA

SCOTLAND'S DEPOSIT RETURN SCHEME

BUY DRINK. PAY DEPOSIT



CONTAINERS RECYCLED



Practicalities of Implementation

- Scotland wide system enshrined in legislation
- Establishment of a not-for-profit Industry led scheme administrator – Circularity Scotland
- Exemptions and guidance
- Manual and Automated take back
- Opportunity to become a voluntary collection point
- Maximising the quality and volume of materials

Impacts on Local Authorities (1)

- Varying impacts depending on LA collection system in place
- Positive or negative changes
- Removal of high value stable recyclate from current household and commercial stream
- Changes to kerbside collections and communicating with householders
- Impact on recycling performance and reporting

Impacts on Local Authorities (2)

- **APSE Working Group Report & Recommendations**
 - Updated compositional analysis
 - Sharing of assumptions and modelling of options
 - Revision of Household Waste Recycling Charter to take account of changes
 - Clarity on VAT status of the deposit
 - Taking forward existing and future offtake contracts

Further Information

- [The Deposit Return Scheme - apse](#)
- [Frequently Asked Questions | Deposit Return Scheme \(zerowastescotland.org.uk\)](#)
- [Deposit Return Scheme | Circularity Scotland Ltd](#)