



# Innovative Techniques for Defect Repairs

Chris Barton – Operations Manager

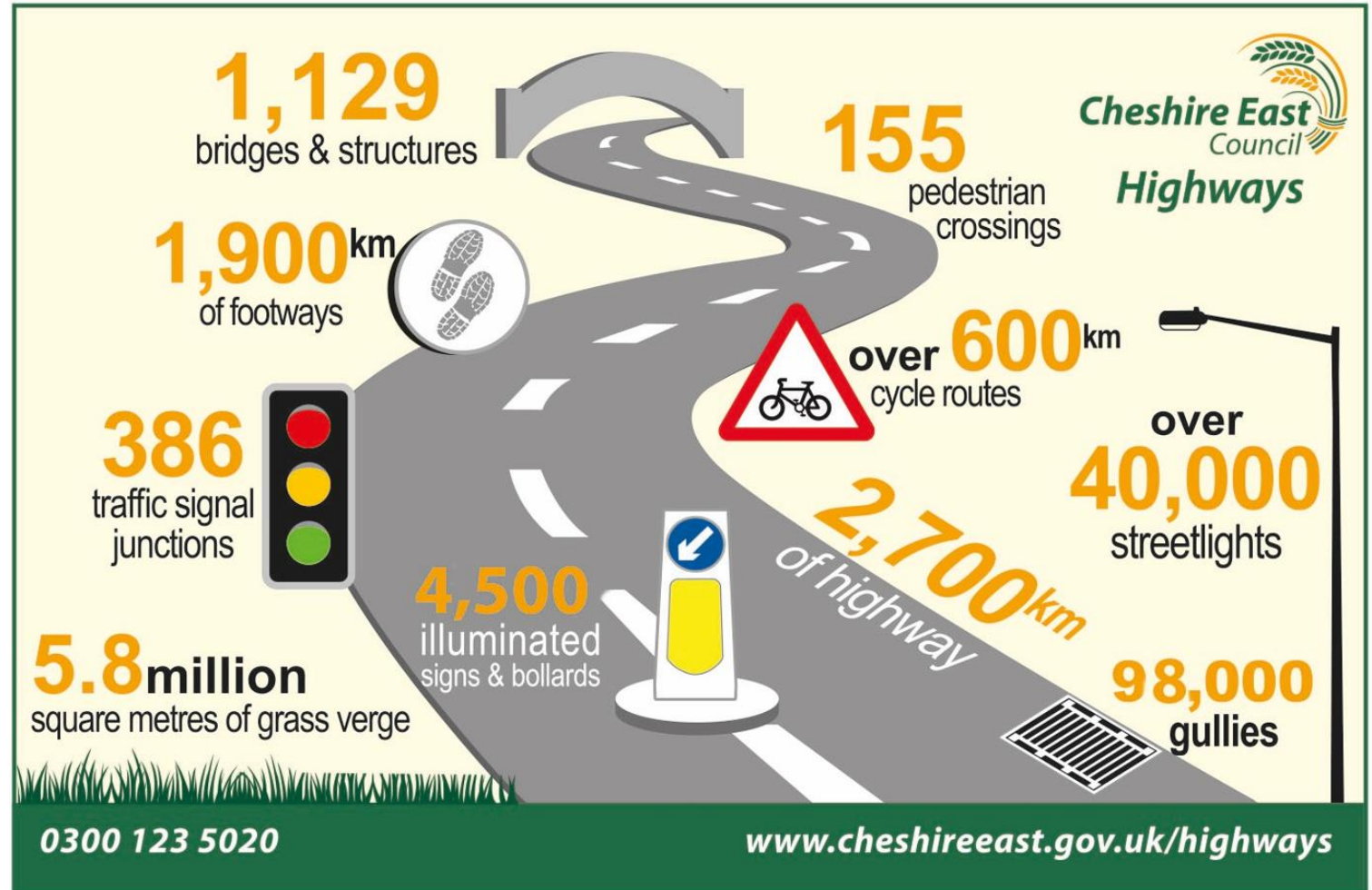
Cheshire East Highways



integrated expertise

# Cheshire East Highways

- Ringway Jacobs - Integrated Service Provider
- Delivering Highways Service since – 2011
- Awarded New 15 year Contract 2018
- Value for money, network improvement & improved customer satisfaction.

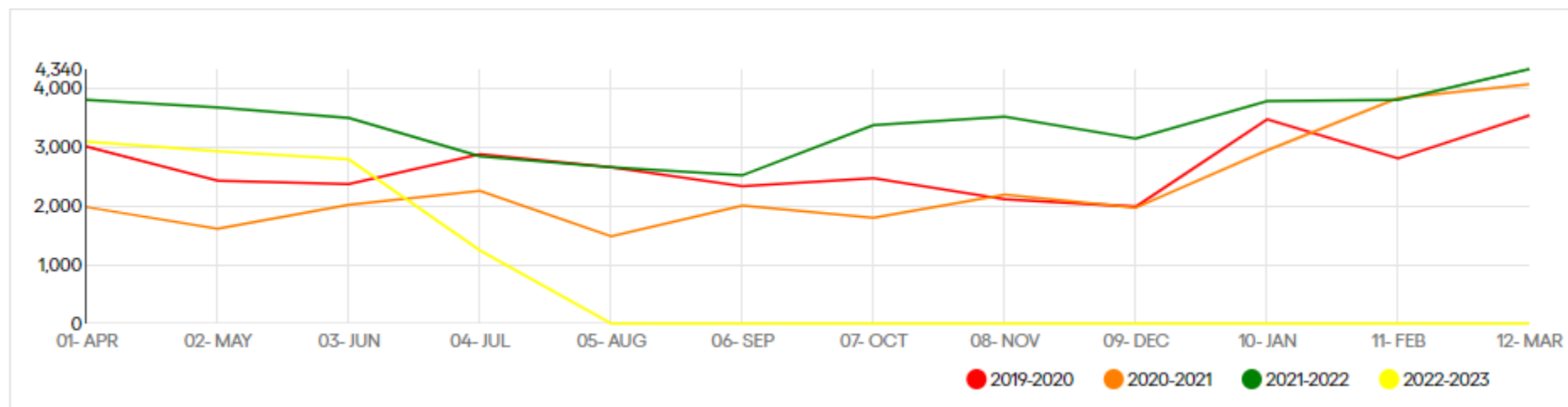


# Well Manager Highways Infrastructure

## CEC Safety Inspections Code of Practice (SICoP)

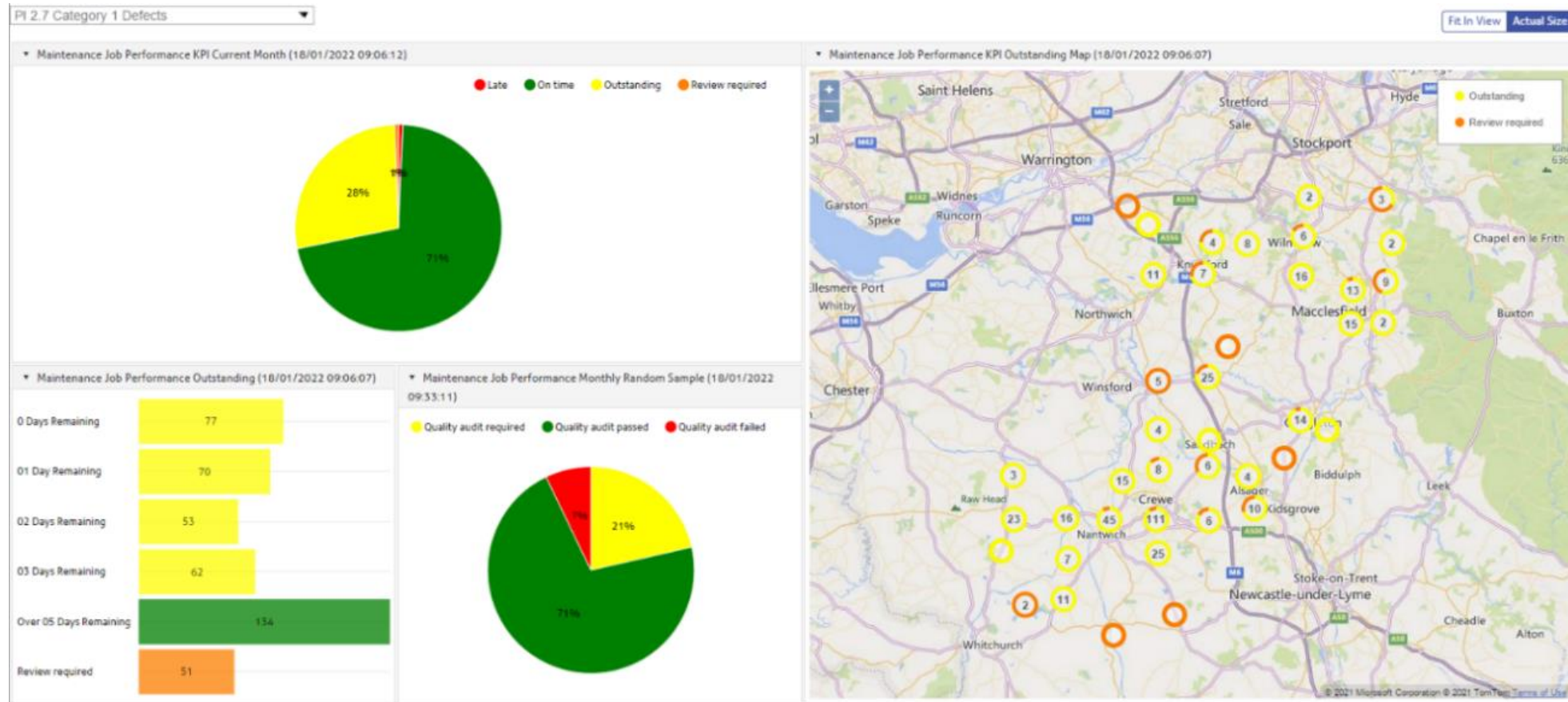
### Background

- In 2020, the council's cabinet approved the adoption of the revised SICoP, with the policy implemented by the highway service from April 2021.



# Operational Dashboards

To manage the increase in demand from an operational perspective based on the new defect investigatory levels and response times, the highways service developed operational dashboards through confirm.



# Targeted Approach



Rural Patching



Urban Patching



## What is Tex Patch?

- BBA/HAPAS approved TexPatch is a hot-applied thermoplastic material for use as a patch repair product for potholes and other similar defects occurring in bituminous surfaces on non-trafficked and trafficked highways. TexPatch material incorporates polymer modified bitumen, fillers, aggregates and fibres.



**HITEX**  
*International Group*  
Road Surface Innovation

# Innovative Repair Techniques

## Technical Data



Property	Typical Value
Polished Stone Value (PSV)	64
Aggregate Abrasion Value (AAV)	4.9

Parameter	Minimum Value
Skid Resistance Value (SRV)	60
Initial texture depth	1.2

# Innovative Repair Techniques

## Product Specification and Technical Data



BS EN 1871  
KM 93503





## Why TexPatch?

- Tough and durable repair system
- Fast installation with rapid curing times
- Hot applied system ensures a strong thermal bond to substrates
- Ideal for high stress and highly trafficked roads
- Offer major efficiencies- early treatment prevents water ingress
- Environmentally-friendly; no packaging waste or loose chippings
- Suitable for all asphaltic substrates

# Innovative Repair Techniques



## Benefits

- Removes excavation and cutting requirements
- Reduces the risk from HAVs
- Removes the requirement for dust suppression
- Reduces manual handling
- Durable
- Public perception – aesthetically
- Eliminates waste
- Increases productivity
- Reduces cost

# Innovative Repair Techniques

## Methodology



# Innovative Repair Techniques

## Trial – Clay Lane



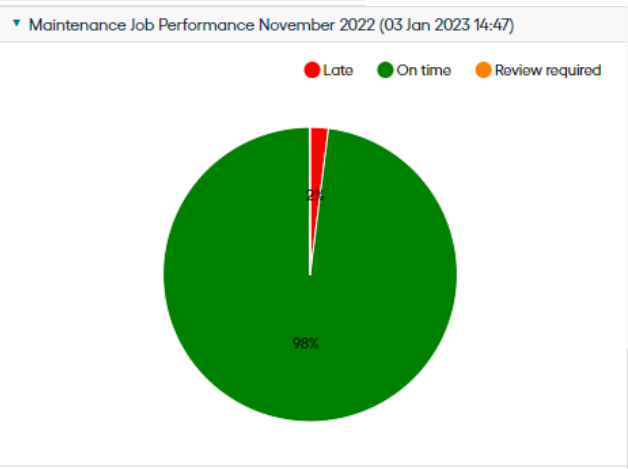
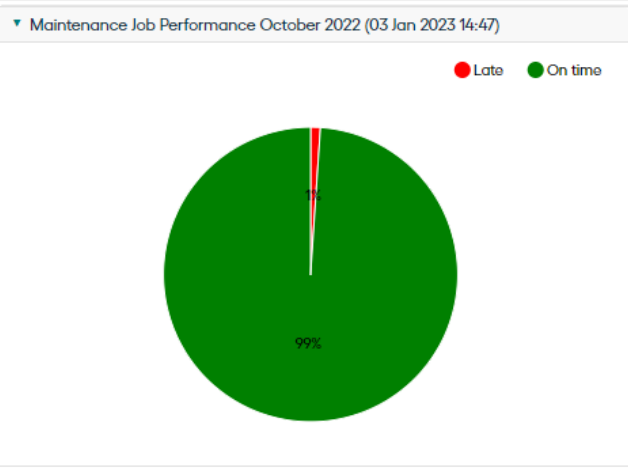
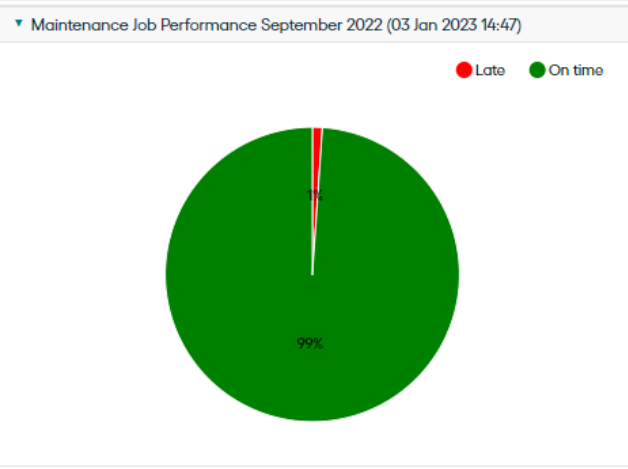
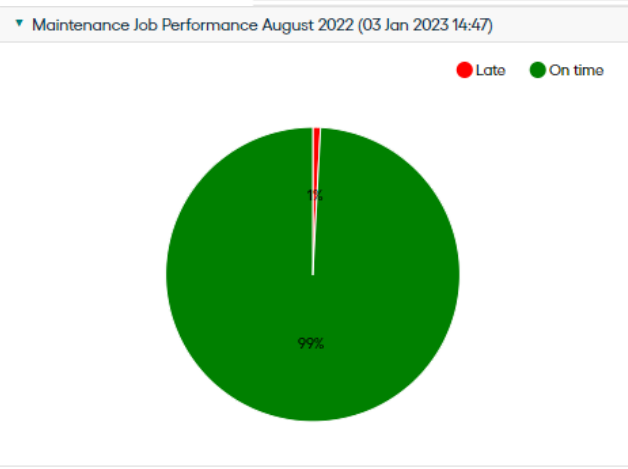
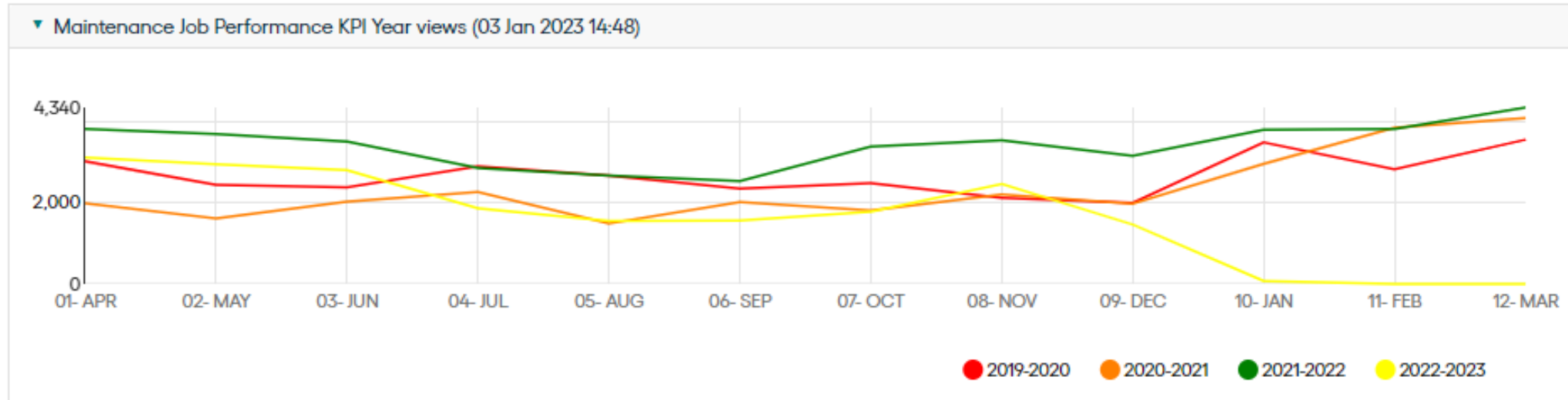
# Innovative Repair Techniques

## Costings - Breakdown



	<u>Average number of defects/ per day</u>	<u>Day Rate</u>	<u>Unit rate per defect</u>	<u>Unit rate per m2</u>
<b>Model 1:</b>				
Mixed Operational Delivery, Including SCP	18 (22m2)	£ 1,949.60	£ 108.31	£ 88.62
<b>Model 2:</b>				
Self Delivered, Including Lease Vehicle/Plant	18 (22m2)	£ 1,087.24	£ 60.40	£ 49.42
<b>Model 3:</b>				
Wholly Self Delivered	18 (22m2)	£ 947.24	£ 52.62	£ 43.06

# Results



# Questions

---

