



Northala Fields

Waste soil to Park land

Vision

- Rejuvenate the northwest of the Borough
- Create the Northolt & Greenford Countryside Park
- A unique new park for residents from derelict land



Park evolution...

- 1997 purchase of 18.5ha site
- Design competition
- Design development and public consultation
- Dedication and input from the NGCP Society
- Design and Build Contract tender award
- 3-4 years site works



Northolt and Greenford Countryside Park

Village it once was. Important sites of note include the Scheduled Ancient Monument site of the moated Northolt Manor, St Mary's Church, Willow Cottages and Northolt Village Greens.

Countryside Park

Northala Fields

Once constructed Northala Fields will be a large public open space with a range of formal and informal recreational and ecological opportunities, creating a central focus to the wider Countryside Park.

Northolt Golf Course

A nine hole course offering professional tuition and a warm welcome to visitors.



Rectory Fields

Rectory Fields

The centre of active sports in the park providing football, cricket and one of the largest new playground developments in West London. In summer 2004 construction shall start on a 5-aside sports facility, complete with sports pavilion.



Willow Cottages

Northolt Manor

Target Roundabout

Village Greens

Belvue Park

A40 East



A40 Bridge Art

Greenford Lagoons and Birch Wood
On either side of the A40, Greenford Lagoons and Birch Wood provide a valuable refuge for a wide range of wildlife using the ponds, wetlands, woodlands, meadows and scrub.



Birch Wood

Greenford Lagoons



Smiths Farm



Community Planting

Marnham Woods and Smiths Farm
These large areas of meadow, scrub and woodlands either side of the Grand Union Canal provide excellent wildlife habitats, walking and cycle routes. Marnham Community Woodland Group take an active role in creating and maintaining new woodland areas.

Contact Us:

Northolt and Greenford Countryside Park Society
Steve: 21 Dolphin Road, Northolt, UB5 6UQ
steve.fabian@tiscali.co.uk



Features

- 4 conical earth mounds
- Water features
 - fishing and model boating
 - lakes, wetlands and swales
- 2 play areas
- Grass amphitheatre
- Cycle routes/pathways
- New wildlife habitats



Unique & new landscape



Mound 1

Carpark

Model
boating

Mound 2

Mound 3

Theatre

Mound 4

Fishing
Lakes

Play
area

Meadows

Carpark

Play area

Northala's transformation: 2003-2008



Northala Fields: an innovative new park

design



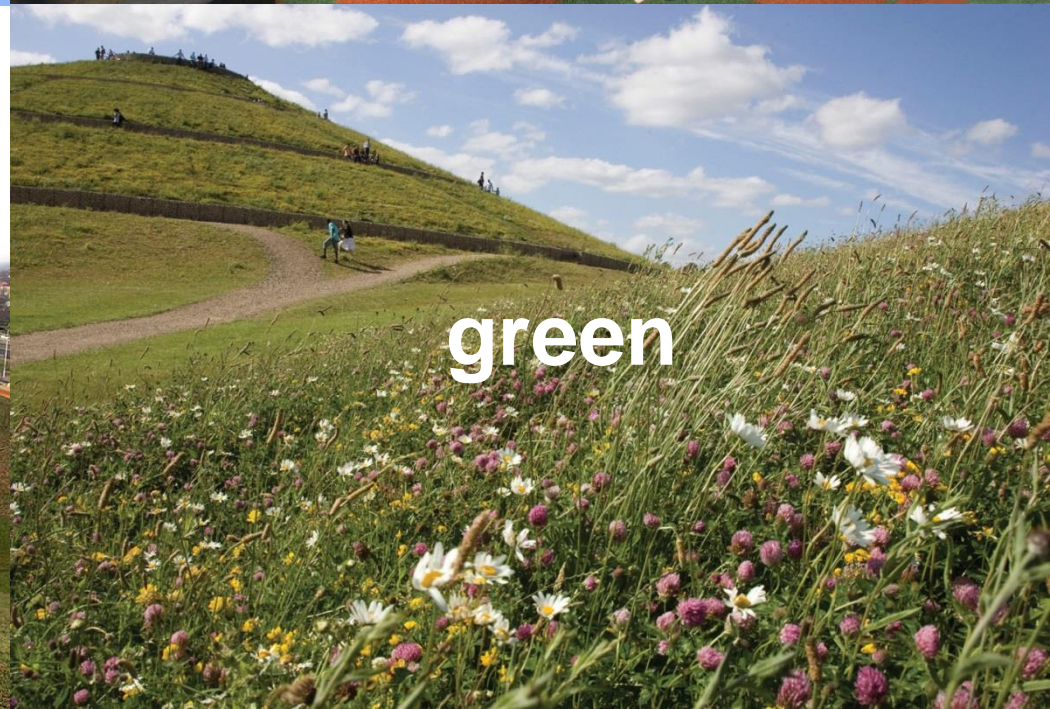
residents



value



green

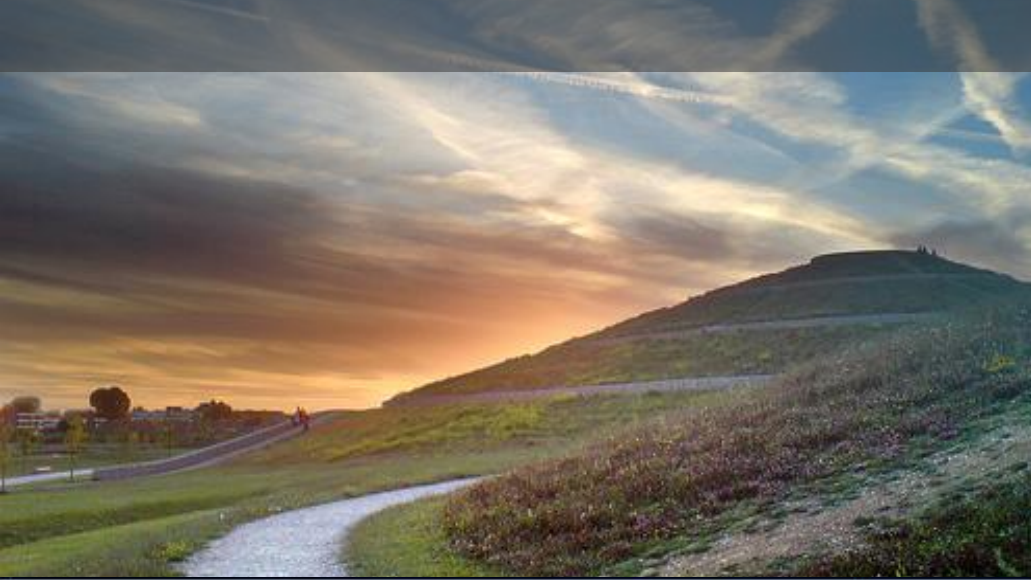


Value for money

- Delivered at no cost to the taxpayer or Council
- £5.3 million project
- Contract partnership
- 1million tonnes of waste material

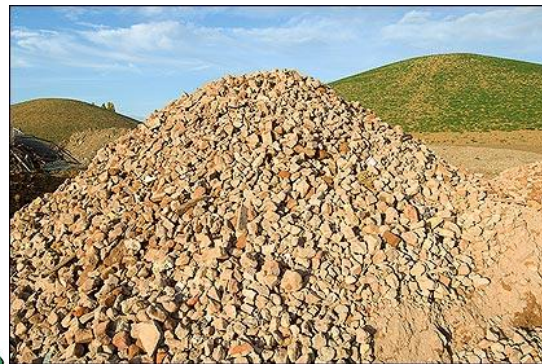


Northala Fields: green to the core



Green to the core

- Park contouring - imported waste
- Gabion baskets – filled from crushed concrete
- Path edging/fishing platforms - recycled plastic
- Paving – reclaimed granite
- Site furniture – timber using reclaimed sleepers



Northala Fields: haven for wildlife



Haven for wildlife

- Turning waste and man-made materials into new wildlife habitats
- Integrating natural systems and processes to create a diverse mix of habitats:
 - Water
 - Wetlands
 - Meadows
 - Grasslands
 - Woodlands



Northala Fields: hydrology



Hydrology

- Watercourses
- Boreholes
- Amenity Pool
- Fishing Water
- Ecological catchment
- Wetland matrix



Northala: a park for people



A park for people

- Critical to the park's success
- Real and effective engagement
 - Design
 - Features & layout
 - Naming
 - Decision making
 - Partner selection
 - Volunteering



Northala Fields: an innovative new park

