

Autism NI

Northern Ireland's Autism Charity



Be Kind to Different Minds: Building Accessible and Inclusive services for Autistic People

**Christine Kearney
Director of Development, Autism NI**

Autism NI

Northern Ireland's Autism Charity



Our Mission: We support autistic people and their families, and campaign for autism acceptance within society.

Our Vision: Our vision is an inclusive society where autistic people can achieve their full potential.



Our Services

Our services are available from pre-diagnosis to adult life:

- Helpline Service
- Early Intervention Service
- Support Groups throughout local communities
- Free parent/carer support courses
- Mental Health and Autism Project (MAP)
- Girls and Autism Project (GAP)
- Autistic Adults Services
- The Autism NI Card
- The Impact Award accredited training for schools & organisations
- Campaigning and fundraising

**We make an
Impact**

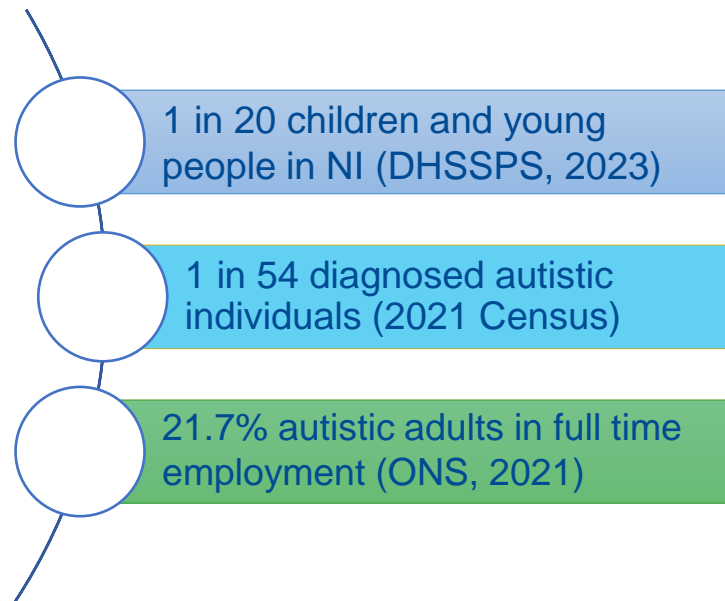
**We Work
Together**

**We are
Changemakers**

What Is Autism?

Autism is lifelong and affects how a person communicates, interacts with other people and how they experience the wider environment.

Autism is a spectrum condition; it will affect people in different ways depending on the individual and varies from person to person.



Why become more accessible?

- Equality Legislation - Autism Act (NI) 2011
- Open to everyone in the community
- Spending power
- Staff confidence
- Diverse and talented staff team
- Worthwhile investment – Good Autism Practice is Good Practice!

What does 'Accessible' look like?

- Hidden condition - waiting on disclosure to offer support?
- Communication with your customers
- Adapt the sensory environment
- Accurate and clear expectations of a service or event
- 'Autism friendly' sessions AND everyday facilities and services
- Continual Process

How is this achieved?

Impact Award

- Bespoke and accredited staff training
- Focus on customers and employees
- Create and implement individualised action plan to achieve the award
- Follow up support throughout implementation and 3 years of award
- Celebrate and promote your commitment to accessibility and inclusion



Tailored Framework for Councils

- Leisure
- Arts and Culture
- Tourism
- Internal Staff Processes
- Council Venues and Processes



It does make an Impact...

A personal perspective





Thank You

Christine Kearney
Director of Development, Autism NI

Christine.Kearney@autismni.org