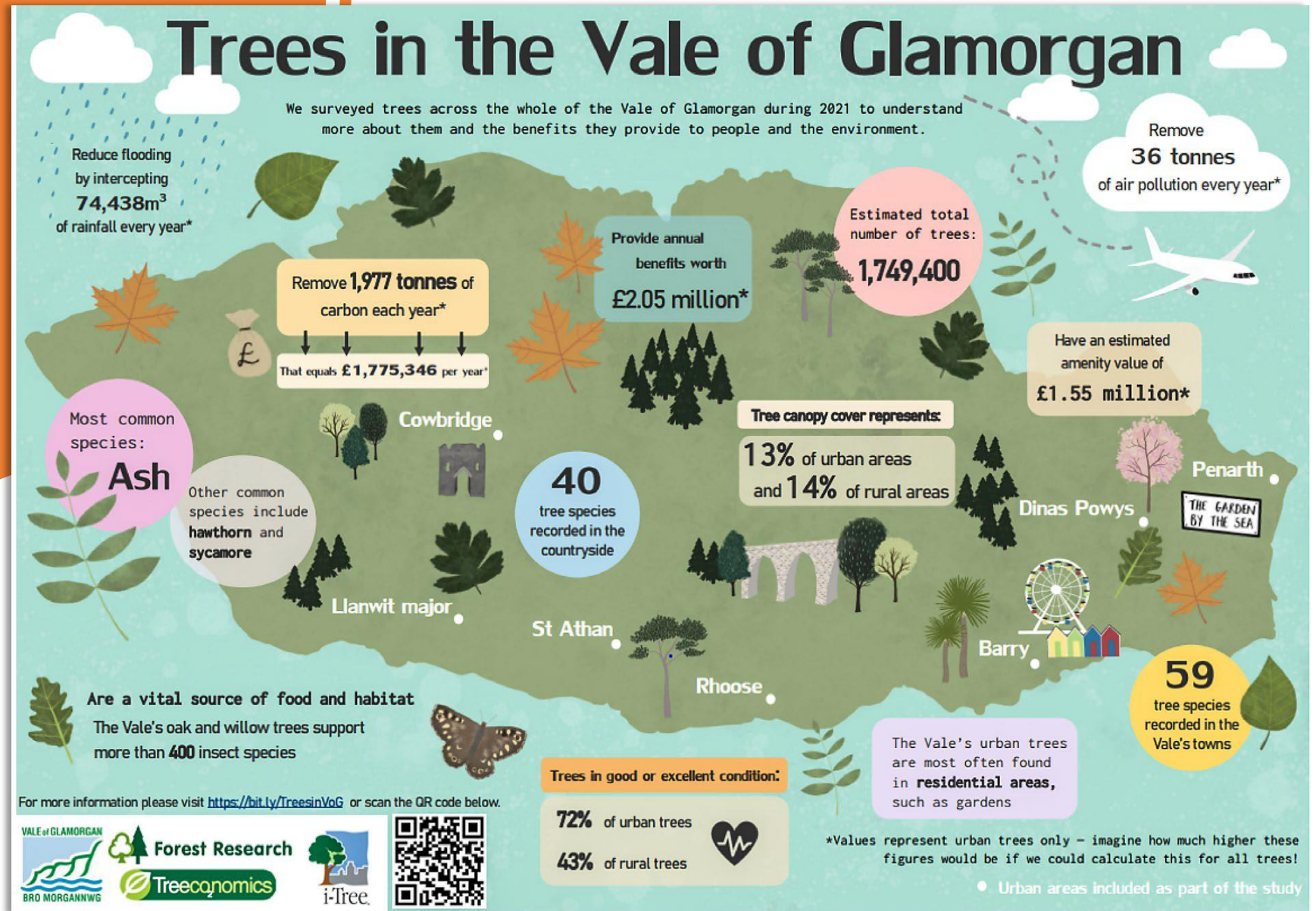




# Vale of Glamorgan Council Draft Tree Strategy

Why do we need a tree strategy?



# Why do we need a tree strategy?

Trees provide a range of benefits that can be both direct and indirect. These benefits can be broken down into environmental, cultural, social, economic and health and wellbeing.

## Reducing Air Pollution



Street trees improve air quality by absorbing pollutants and intercepting harmful particulates.

## Fighting Climate Change



Increasing tree cover in towns and cities by just 10% can keep surface temperatures at current levels despite climate change.

*(University of Manchester)*

## Improving Image



Street trees improve the image of our neighbourhoods and make them even better places to live, work and invest.



## Building Communities

Getting residents involved in caring for their trees helps them re-connect with their neighbours.



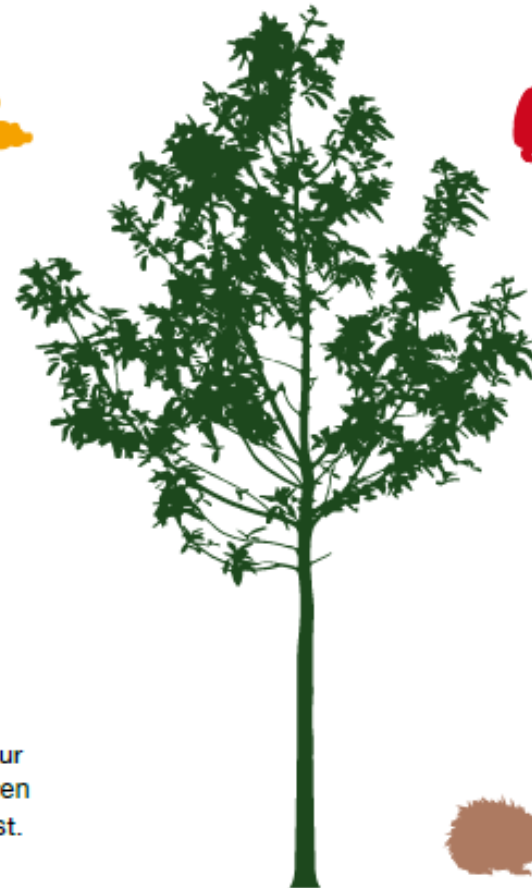
## Boosting Health

Research shows that children who live in tree-lined streets have lower rates of asthma.

*(Columbia University, USA)*

## Benefiting Wildlife

As well as being great for people, street trees also offer much needed habitat for wildlife too.



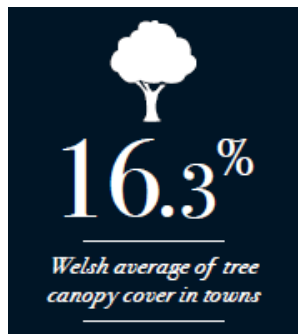
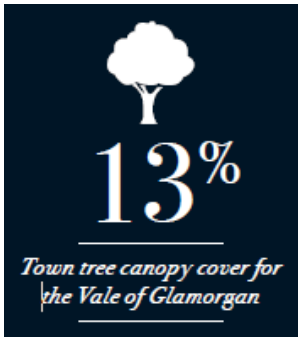
# Why do we need a tree strategy?

Wales is one of the most nature depleted countries in the world (State of Nature report 2019).

The Vale is one of the least wooded counties in Wales: 13% urban canopy cover & 14% Rural Canopy cover

..this is below the recommended target of 20% cover for towns and cities and falls short of the minimum 15% target for coastal urban areas.

..Authority wide we need a consistent approach to managing /maintaining / increasing our tree stock and canopy cover.....



# Our guiding principles are to commit to:

Protecting and caring for our tree stock.

Working to retain existing mature tree stock, wherever possible in both public and private settings.

Identifying suitable locations across the Council's land holding where additional tree planting can be accommodated, without detriment to the existing habitats.

Ensuring that trees that are lost are replaced in greater numbers by planting a minimum of 2 trees for every one removed within the urban environment and develop a sliding scale of mitigation based on the extent of tree loss.

Developing tree planting schemes/ allowing natural regeneration.

Trunk Diameter of existing tree (cm)	Number of replacement trees
Up to 39.9	2
40 to 49.9	3
50 to 59.9	4
60 to 69.9	5
70 to 79.9	6
80 plus	7



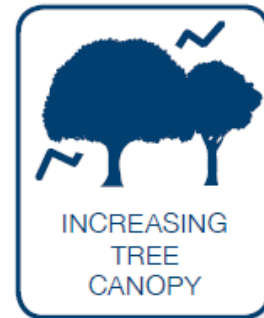
# Our guiding principles are to commit to:

Planting a minimum of 1500 trees annually, which will include a minimum of 500 standards (2m tall trees), in predetermined targeted areas across the Council estate.

Ensuring that the right tree is planted in the right place.

Increasing urban street canopy cover within the built adopted Highway year on year.

To a net increase in canopy cover in urban areas on Council owned land by 5% by 2039.



## Target minimum recommended Root Available Soil Volume (RASV)'s

- 30m<sup>3</sup> for individually planted large-medium trees.
- 20m<sup>3</sup> per large-medium tree when planted as a group of two or more with shared RASV.
- 10m<sup>3</sup> for individually planted small trees of approximately 6m height and 3m diameter branch spread after 25 years.
- 5m<sup>3</sup> per small tree when planted as a group of two or more with shared RASV.



# Our Strategic Objectives are to:

Protect and enhance the current tree stock.

Ensure that the Council has an accurate database of its tree stock.

Raise awareness of the Council's tree stock and the environmental and social benefits it provides.

Ensure that all tree related decisions and activities are made in a consistent and structured way across all Council departments.

Develop community involvement in tree related issues, including opportunities for grant aided funding.

Increase tree planting and natural regeneration on Local Authority land and influence tree planting on new developments and private land through the planning system and the provision of grants.

Prioritise increasing canopy cover in areas identified in the i.Tree survey with less than 10% cover.

Confirm<sup>®</sup>



# Our Strategic Objectives are to:

Prioritise tree planting in urban areas with the highest levels of deprivation.

Establish a healthy and diverse tree population maintaining tree numbers and canopy cover wherever possible.

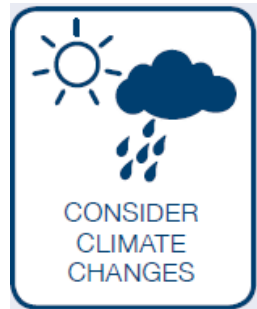
Take into account the current and future changes in climate and manage the tree stock accordingly.

Ensure that the right tree is planted in the right place.

Deal with queries relating to trees from stakeholders in a consistent and effective manner.

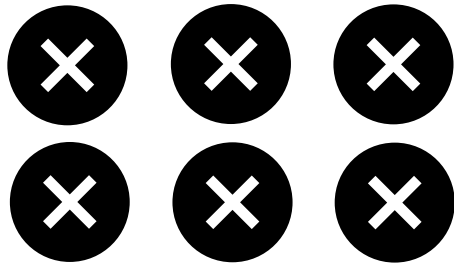
Protect the Council from any third-party risks associated with trees.

Ensure all operational staff have received Quantified Tree Risk Assessment (QTRA) training.





# Our Tree Management Objectives are:



There are 29 objectives relating to the management of trees, the key objectives that will clarify specific situations are: The Council.....

*will not prune or fell a Council owned tree simply because it is considered to be 'too big' or 'too tall'.*

*will not prune or fell a Council owned tree to remove or reduce leaf fall or remove fallen leaves from private property.*

*will not prune or fell a Council tree to remove or reduce bird droppings from trees or remove bird droppings from private land..*

*will not prune or fell a Council owned tree to remove or reduce the nuisance of fruit/berries or nuts or remove such fallen fruit from private land.*

*will not prune or fell a Council owned tree to remove or reduce honeydew or other sticky residue from trees.*

*will not prune or fell a Council owned tree to remove or reduce the release of pollen.*

# Our Tree Management Objectives are:

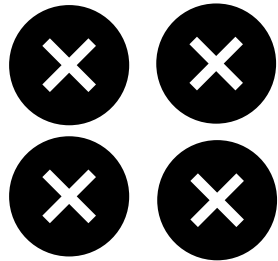
There are 29 objectives relating to the management of trees, the key objectives that will clarify specific situations are: The Council.....

*The Council will not prune or fell a Council owned tree to prevent perceived interference with TV / satellite installation / reception.*

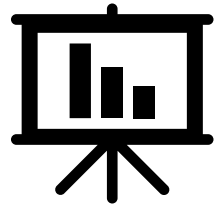
*The Council will not prune, fell or cut the roots of a Council owned tree to prevent roots entering a drain that is already broken or damaged.*

*will not prune or remove trees in cases where they cause a reduced amount of light to fall on a property.*

*The Council will not prune or fell a Council owned tree to improve the view from a private property.*



# Draft Tree Strategy, next steps:



We will very shortly commence a 12-week online consultation

Over that period officers will be available to meet with interested groups who would like to discuss any points within the draft strategy

We will gather and analyse the data from the consultation to assess if any modifications are required and if so report back to cabinet these changes

Happy to take any questions.....