



2008 - 2009
Reducing Re-offending
2003 - 2008
Winner of 6 previous
Beacon Awards



INVESTOR IN PEOPLE



Speaker : Matthew Twohig

Green Team Coordinator

London Borough Of Tower
Hamlets



2008 - 2009
Reducing Re-offending
2003 - 2008
Winner of 6 previous
Beacon Awards



INVESTOR IN PEOPLE



APSE Best Service Team Finalist 2017 - Parks, Grounds and Horticultural Services

- Workforce retention through up-skilling and training
- The Council's *Find it, Fix it, Love it* APP - Ensuring quick response times and involving residents
- Investing in new machinery and plant to enhance effectiveness and reduce water-logging



2008 - 2009
Reducing Re-offending
2003 - 2008
Winner of 6 previous
Beacon Awards



INVESTOR IN PEOPLE



Tower Hamlets-Green Team. The Journey continues





2008 - 2009
Reducing Re-offending
2003 - 2008
Winner of 6 previous
Beacon Awards



INVESTOR IN PEOPLE



The Green Team Vision

To provide high quality green spaces for both residents and visitors to Tower Hamlets





2008 - 2009
Reducing Re-offending
2003 - 2008
Winner of 6 previous
Beacon Awards



INVESTOR IN PEOPLE



Overview of Tower Hamlets

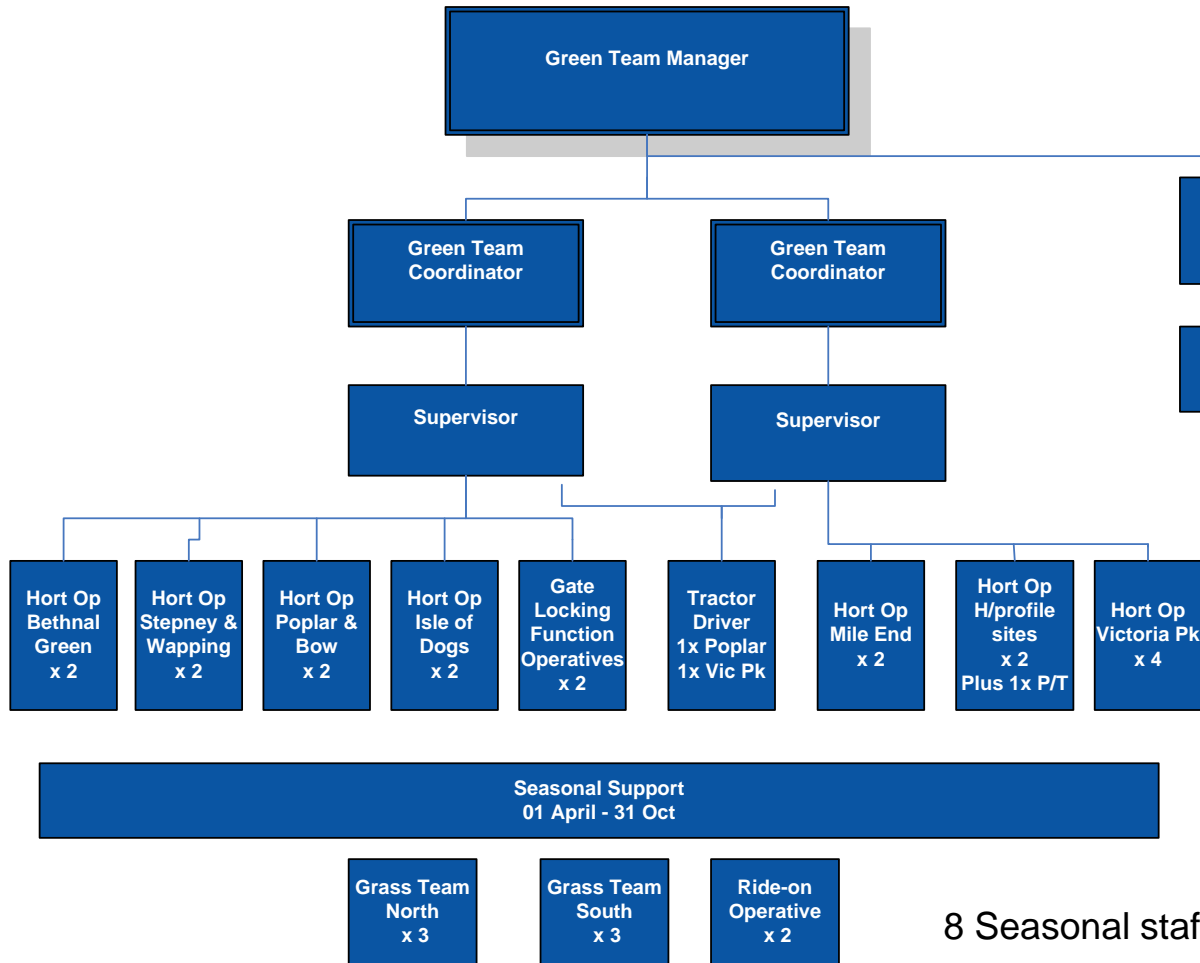
- Fastest growing Population of any local authority (2011 census)
- Large disparity between wealth and poverty
- High child poverty rate
- Following a mayoral decision in August 2012 the grounds maintenance service was brought back in house in April 2013.
- Mayoral priority to increase the standard of all parks and open spaces

Scope Of The Green Team

- Horticulture Maintenance to over 140 parks and open spaces
- Monitoring of external service providers
- Infrastructure Repairs and Inspection of Play areas
- Park Gate Locking Function



Resource to Deliver Service



20 core staff
(plus 1 x part time operative 21hrs.)

8 Seasonal staff



2008 - 2009
Reducing Re-offending
2003 - 2008
Winner of 6 previous
Beacon Awards



INVESTOR IN PEOPLE



Where We Were

- Poor overall standards
- Poor value for money
- Contract that was not fit for purpose
- High level of complaints
- General user dissatisfaction
- Demotivated Workforce
- Skills Shortage

Where We Are

- Records number of Green Flag awards
- Victoria Park achieved Green Flag peoples choice awards 3 times in 4 year
- No members enquiries or corporate complaints regarding maintenance
- London in Bloom Gold

The Key To Sustaining success



- Motivation and training for staff is vital to maintain the standards set

Training

- Full Competency based Management system in place including yearly skills Audit.
- Full Training plans in place for each staff member
- Training including internal and externally organised training





2008 - 2009
Reducing Re-offending
2003 - 2008
Winner of 6 previous
Beacon Awards



INVESTOR IN PEOPLE



Safety

- ;
- Full safety systems in place for the monitoring and management of

- **PUWER**

- **HAVS**

- **COSHH**



2008 - 2009
Reducing Re-offending
2003 - 2008
Winner of 6 previous
Beacon Awards



INVESTOR IN PEOPLE



Results

Higher staff
retention



Outstanding
safety record

Award Wining
Standards



High customer
satisfaction



2008 - 2009
Reducing Re-offending
2003 - 2008
Winner of 6 previous
Beacon Awards



INVESTOR IN PEOPLE



Implementing Technology

- FIFI LI App designed to improve reporting time within the borough
- Gate keeper app designed to record locking of parks gates and record anti social behaviour
- Both functions to be combined into PSI mobile



Find it Fix it Love it

FiFiLi the Swiss army knife of applications for Tower Hamlets residents and visitors alike. See something in the Borough you love and think everyone should know about? Come across something that needs fixing and want someone to do something about it?



Download FiFiLi at;





2008 - 2009
Reducing Re-offending
2003 - 2008
Winner of 6 previous
Beacon Awards



INVESTOR IN PEOPLE



Results

**Faster smarter
Streamlined
reporting**



11926 Total FIFIL request since June 2015 saving the department over 47k on call centre charges.

NB: This does not include saving from officers time.

Investment and Income

- Income Generation from internal and external sources
- New machinery procured using income generated throughout the last four years
- Additional resources utilised using funds generated



Results

Increased
Productivity



Ability to maximise
resources at key
times

Corporate
recognition



Eased budget
pressure



2008 - 2009
Reducing Re-offending
2003 - 2008
Winner of 6 previous
Beacon Awards



INVESTOR IN PEOPLE



Moving Forward

- Promotion of the Green Team both internally and nationally
- Promotion of Tower Hamlets Parks through national awards
- Achieve a fully generic skill set across the workforce



2008 - 2009
Reducing Re-offending
2003 - 2008
Winner of 6 previous
Beacon Awards



INVESTOR IN PEOPLE




Any Questions



Helping Pollinators Locally

Paul Evans

www.buglife.org.uk
[@buzz_dont_tweet](https://twitter.com/buzz_dont_tweet)





Why is insect pollination important?

Insect pollination is essential to growing our food

“One out of every 3 mouthfuls”

90% of world’s crop species
In UK worth c.£600m p.a. or 13% of UK agricultural revenue .
£13 billion across EU
£132 billion around the world





The alternative to insects



Insect pollination and our ecosystems


Insect pollination is essential to maintaining a healthy and thriving environment

80% of British wild plants are pollinated by insects

Much of our other wildlife depends on them



Thick legged flower beetle (*Oedomera nobilis*)



Our pollinators – a huge diversity

Bees, butterflies, moths, beetles, wasps, flies - you might be surprised at how many species are involved – at least 4,000 species in Britain!



Pollinators in trouble

>60% of pollinators are in decline

The State of Nature report is a collaboration between the 25 UK conservation and research organisations listed below:

www.rspb.org.uk/stateofnature





Our Pollinators in trouble

Over half of our bee species have suffered declines over the past 50 years

Six of 25 bumblebee species have declined in UK by at least 80% in last 50 years

38% of hoverfly species in decline

71% of butterfly species in decline



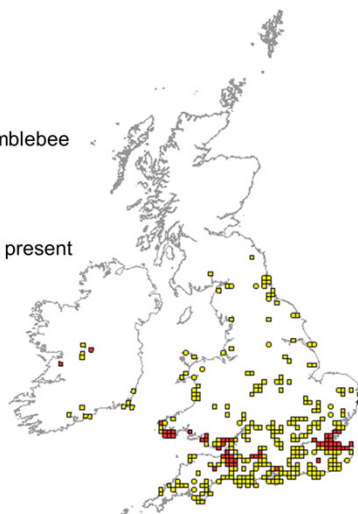
Over 250 UK pollinators are in danger of extinction



Bumblebee losses

Shrill carder bee – a bumblebee
(*Bombus sylvarum*)

Red squares = 1995 to present





A UK-wide wildlife priority

National Pollinator Strategy for England (2014)

- A shared plan of action which looks to everyone to work together and ensure pollinators' needs are addressed as an integral part of land and habitat management.
- More, bigger, better, joined-up, diverse and high-quality flower-rich habitats



National Pollinator Strategy for England- Supporting pollinators across towns, cities and the countryside

1. Working with large-scale landowners, and their advisers, contractors and facility managers, to promote simple changes to land management to provide food, shelter and nest sites.



National Pollinator Strategy for England- Supporting pollinators across towns, cities and the countryside

2. Ensuring good practice to help pollinators through initiatives including managers of public and amenity spaces, utility and transport companies, brownfield site managers, local authorities, developers and planners.



 **National Pollinator Strategy for England- Supporting pollinators across towns, cities and the countryside**

3. Encouraging the public to take action in their gardens, allotments, window boxes ...to make them pollinator-friendly or through opportunities such as community gardening and volunteering



 **There are lots of good things happening**



Urban Buzz

GET BRISTOL BUZZING

Urban Buzz Bristol

Urban Buzz is an ambitious project aiming to create 100 'buzzing hotspots' across Bristol for our much loved bees and other pollinators, providing additional feeding and shelter opportunities. With the help of local partners and various community groups, over the next 20 months we can help create a more vibrant buzzing city!

Biffe Award
Building communities. Transforming lives.

PEOPLE'S POSTCODE LOTTERY



 **But many more opportunities to do things locally**

Local authorities are well placed to take positive action for pollinators

- **Conserving pollinators through Local Planning and GI work**
- **Managing land to benefit pollinators**
- **Enthusing others to take action**



HELPING POLLINATORS LOCALLY


DEVELOPING A LOCAL POLLINATOR ACTION PLAN OR STRATEGY

 **Local Pollinator Action Plans**


A Local Pollinator Strategy or Plan is a call for action – inviting all parts of the local authority and local community to do something to help pollinators.

“Everyone can do something and every little thing can help”.



 **Developing and implementing a Local Pollinator Plan**

- Ensures **the needs of pollinators** are enshrined across **all local authority work**
- Helps identify previously unknown **opportunities for pollinators**
- Ensures all aspects of pollinators are addressed and **the conservation of pollinators** is put at the heart of land management
- Identifies opportunities for **collaborative and locally-owned initiatives**





Some benefits of a Local Plan

- Increased public engagement and awareness in pollinators
- An improved local environment for the enjoyment of local people with associated health and well-being benefits
- Potential savings on local authority managed green space
- Helping to develop and improve green infrastructure
- Opportunity to shout about pollinator work already underway



Using Land to benefit pollinators

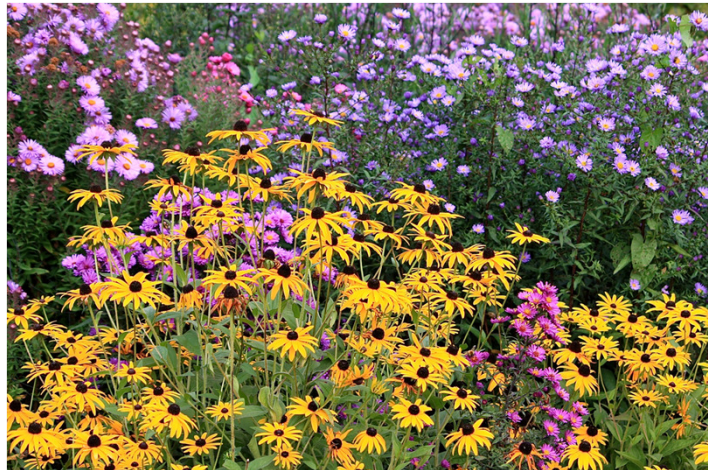
- Local Wildlife Site Management
- Reviewing parks management and opportunities to manage land for the benefit of pollinators
- Reviewing amenity plantings
- Changing mowing regimes on road verges etc.
- Reviewing pesticide policy and looking to cease use of neonicotinoids
- Providing training to staff to raise awareness of the needs of pollinators





Opportunities within public greenspace

Flowerbeds etc



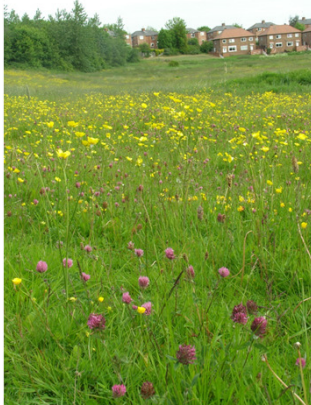
Perennial Planting





Opportunities within public greenspace

- *Existing grassland areas*



- Delaying cutting will extend foraging period for pollinators

Burnley's re-thinking Parks Project



 **Opportunities within public green**

New Flower-rich grasslands



The left photograph shows a vibrant field of wildflowers, including yellow buttercups and red poppies, growing in a grassy area. The right photograph shows a similar field of yellow flowers, with a Sainsbury's supermarket building visible in the background under a cloudy sky.

 **Opportunities within public green space**

Flowering lawns



The left photograph is a close-up shot of a bee on a purple flower in a lawn. The right photograph shows a wider view of a lawn with a mix of purple, yellow, and white flowers.

- **Alternative to amenity grassland where verge must be kept short**
- **Can withstand a more frequent mowing regimes**

 Opportunities within public green space

Trees for bees!



 Opportunities within public green space

Cemeteries





Raising Awareness in the community

- Providing advice to local gardeners, allotment holders and community groups
- Raising awareness of pollinators to local residents and businesses
- Working with schools to create pollinator-friendly habitats




There is public support..




A Friends of the Earth and Buglife YouGov survey has revealed:

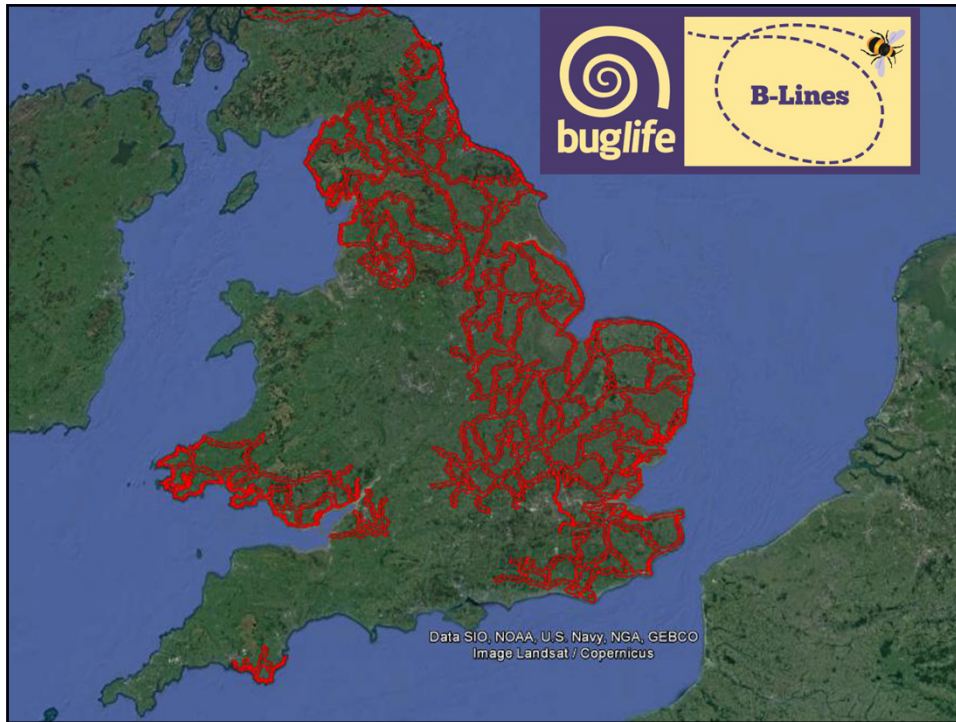
- Almost two thirds of the population (63%) agree that local councils should be doing more to protect Britain's bees
- 81% of the public back calls for councils to help Britain's under-threat bees by cutting areas of grass less often in parks and roadside verges to allow wild flowers to grow
- 88% support councils reducing the use of bee-harming pesticides
- 92% support local authorities in planting more wildflowers and other bee friendly plants in their local parks and community spaces






 **B-Lines – a network of wildflower-rich areas**



B-Lines – a vision
To create a network of B-Lines linking wildflower-rich areas across the UK from the west to the east, and from the north to the south, linking our hills to the coast, and linking our towns and urban areas to the countryside.



A few things to take away today - Food through the seasons

 <p style="font-size: small; background-color: #ccc; padding: 2px;">Spring</p> <p>Trees and shrubs are vital - blossom in sheltered, sunny places can attract huge numbers of pollinators, along with herbs such as dead-nettles, ground ivy and dandelions</p>	<p>Legumes, composites and umbellifers, and shrubs such as elder, bramble and rose are key food sources, later in summer, teasel, thistles and hogweed can be particularly important</p>  <p style="font-size: small; background-color: #ccc; padding: 2px;">Summer</p>	 <p style="font-size: small; background-color: #ccc; padding: 2px;">Autumn</p> <p>Thistles, yarrow and scabiouses give early autumn food, with ivy often the most important autumn flower; providing a vital final feast for overwintering adults</p>
--	--	---



A few things to take away today - Nesting and overwintering areas

- Ditches and ponds provide valuable wetland flowers as well as larval habitat for hoverflies
- Woody habitats provide sources of dead and decaying wood used for nesting
- Banks can be important nesting areas for solitary bees and bumblebees
- Hedgerows and features (banks/ deadwood) provide shelter, overwintering sites, and corridors for movement





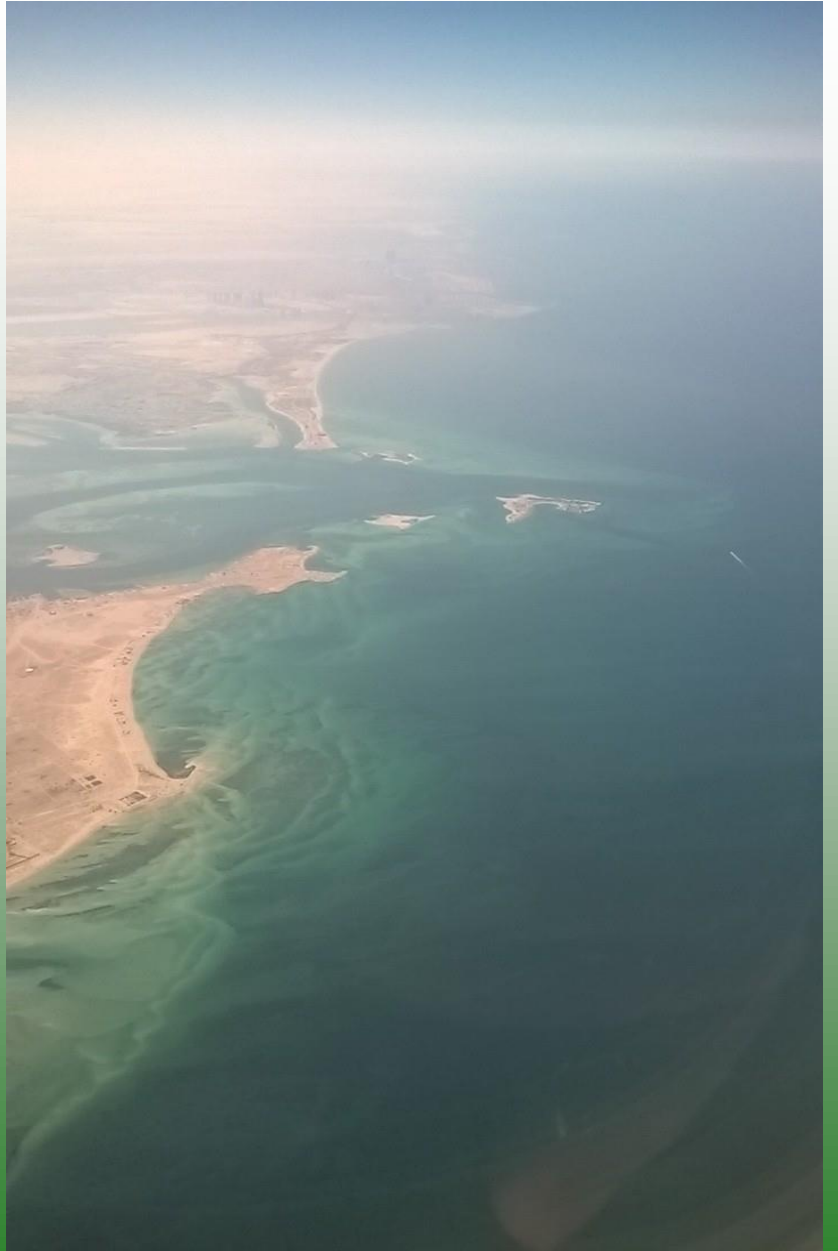
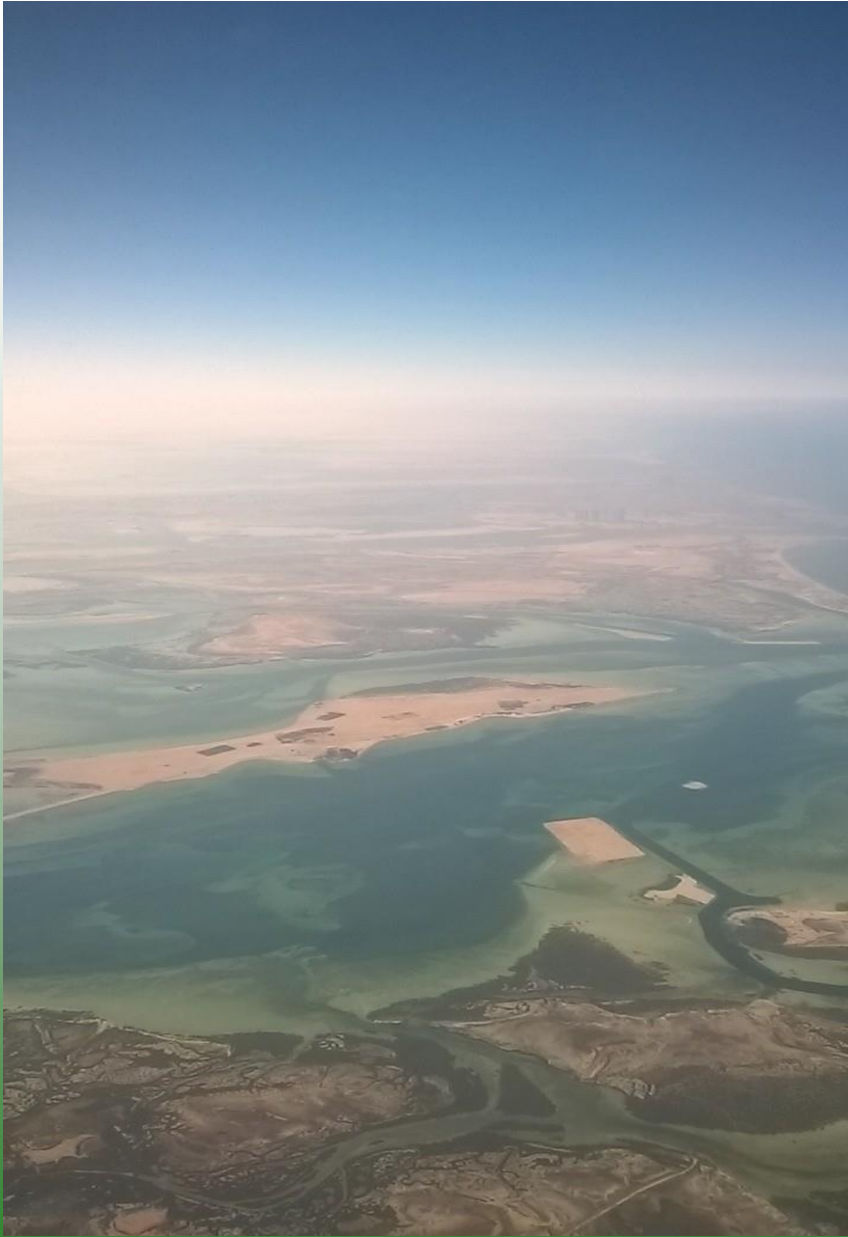
Paul Evans
paul.evans@buglife.org.uk

www.buglife.org.uk
[@buzz_dont_tweet](https://twitter.com/buzz_dont_tweet)

Parks in Abu Dhabi City
The United Arab Emirates









طوقه الشؤون البلدية
DEPARTMENT OF MUNICIPAL AFFAIRS
بلدية مدينة أبوظبي
ABU DHABI CITY MUNICIPALITY



حديقة دلما
DELMA PARK

























منطقة الرياضة والتعب
Sport and Play Areas

مصلى الرجال
Male Prayer Room

مصلى النساء
Female Prayer Room

RECYCLING STATION



♻️

♻️



UNIVERSITY OF ...







Al Rabhia Park Before



AFTER

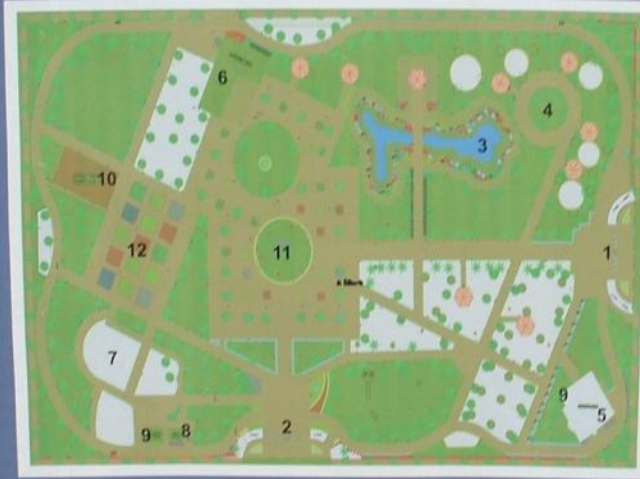
حديقة الرحبة
AL RAHBA PARK



دائرة الشؤون البلدية
DEPARTMENT OF MUNICIPAL AFFAIRS
بلدية مدينة أبوظبي
ABU DHABI CITY MUNICIPALITY



RAHBA PUBLIC GARDEN حديقة الرحبة



- | | | | |
|----------------------------|------------------------|------------------------------|---------------------|
| 1- Main Entrance Gate | 7- Children Playground | 7- ألعاب الأطفال | 1- البوابة الرئيسية |
| 2- Secondary Entrance Gate | 8- Toilets | 8- دورات مياه (رجال - سيدات) | 2- البوابة الثانوية |
| 3- Pond | 9- Ladies Toilets | 9- دورات مياه سيدات | 3- البحيرة |
| 4- Family Zone | 10- Volleyball Court | 10- ملعب كرة الطائرة | 4- جسات عائلية |
| 5- Mosque | 11- Central Plaza | 11- مركز الحديقة | 5- المسجد |
| 6- Cafeteria | 12- Flower Bed | 12- حوض الزهور | 6- الكافتيريا |

WARNING
Parents should watch their children on play ground equipments.
The maintenance company is responsible for any accident.

ABC PGD

998 / 999



AMBULANCE

فئات
FOL

997



FIRE

حاجة لك
ASK

999



POLICE

CALL



Shay Haleeb
Cafe



شاي حليب
كافيه









ممنوع قطف الازهار

DON'T PLUCK FLOWERS





دائرة الشؤون البلدية
DEPARTMENT OF MUNICIPAL AFFAIRS
بلدية أبوظبي
ABU DHABI MUNICIPALITY

منتزه خليفة KHALIFA PARK

إدارة الحدائق والمنتزهات الترفيهية PARKS AND RECREATION FACILITIES DIVISION

- This park is made for you, please keep it clean
- Parents must take care of their children
- Playing football is prohibited
- Sheesha (Arjeela) is prohibited
- For any enquiry, please contact administration
- Do not climb trees or pluck flowers
- Barbeques are allowed only in designated areas, after getting permit from security office and following the attached instructions

- هذه الحديقة انشئت من أجلك، الرجاء المحافظة على نظافتها
- يرجى الانتباه على أطفالكم حرصاً على سلامتهم
- يحظر لعب الكرة حفاظاً على الأعمال الزراعية
- يمنع منعاً باتاً استخدام الشيشة (الأرجيلة)
- يرجى مراجعة الإدارة في حالات الضرورة
- ممنوع تسلق الأشجار وقطف الأزهار
- يسمح بالشوي فقط في أماكن مخصصة وبعد الحصول على تصريح من مكتب الأمن و اتباع التعليمات المرفقة بالتصريح









دائرة الشؤون البلدية
 DEPARTMENT OF MUNICIPAL AFFAIRS
 بلدية مدينة أبوظبي
 ABU DHABI CITY MUNICIPALITY

زرنا..
 فأنجزنا..
 فحصدنا..

دائرة الشؤون البلدية
 DEPARTMENT OF MUNICIPAL AFFAIRS
 بلدية مدينة أبوظبي
 ABU DHABI CITY MUNICIPALITY

على تعازي
 زايد آل نهيان
 زايد آل نهيان
 من محمد آل نهيان
 زايد آل نهيان
 زايد آل نهيان
 زايد آل نهيان
 زايد آل نهيان
 زايد آل نهيان
 زايد آل نهيان
 زايد آل نهيان

لا... عن نهاية حرجية يقين
 مقتل 83 من المولودين وفوات صالح
 في غارات التحالف وجهات المقاومة
 في العراق كضرورة لهزيمة داعش

تنظيم الإرهابي ينطق صياحه العفريت عن الأناجير
 التحالف الدولي: المصالحة السياسية
 هي العراق ضرورة لهزيمة داعش

دائرة الشؤون البلدية
 DEPARTMENT OF MUNICIPAL AFFAIRS
 بلدية مدينة أبوظبي
 ABU DHABI CITY MUNICIPALITY

زرنا..
 فحصدنا..

دائرة الشؤون البلدية
 DEPARTMENT OF MUNICIPAL AFFAIRS
 بلدية مدينة أبوظبي
 ABU DHABI CITY MUNICIPALITY

www.facebook.com/abudhabicomm
www.instagram.com/abudhabicomm
www.youtube.com/abudhabicomm
www.abudhabi.ae | 800555





















My Wellbeing...

...My Park



















بِسْمِ اللَّهِ الرَّحْمَنِ الرَّحِيمِ

بتوجيهات من صاحب السمو الشيخ

محمد بن زايد آل نهيان

ولي عهد ابو ظبي - نائب القائد الأعلى للقوات المسلحة

خُصّصت حديقة المشرف المركزية للمجتمع
وتخلّد هذه الشجرة افتتاح الحديقة بتاريخ 19 مارس 2015

Mushrif Central Park is dedicated to the Abu Dhabi Community from

His Highness Sheikh Mohamed bin Zayed Al Nahyan

Crown Prince of Abu Dhabi
and Deputy Supreme Commander of UAE Armed Force

tree commemorates the parks' opening on 19th March 2015



DONKEY
FERRIS DE FERRIS DE FERRIS
حمار

لا تمسح أو تعف
الحيوانات
PLEASE DO NOT POKE
OR TEASE THE ANIMALS













Green Flag
Award
جائزة العلم
الأخضر
2016/17

جامعة الملك سعود
King Saud University



إدارة الشؤون البلدية
DEPARTMENT OF MUNICIPAL AFFAIRS AND URBAN PLANNING
مدينة أبوظبي
ABU DHABI CITY MUNICIPALITY





@CWparkman

@RBCparklife