

# Project to reduce ill health in paving, road and highway work

Dr Robert Ellis

HSE Occupational Hygiene Unit

# Health Risks



# Probability of exposure

Potential for Harmful Levels of Exposure Key		Potential Health Effect from Exposure				
	Harmful exposure levels probable	Lung disease and respiratory effects	Skin disease (dermatitis)	Asbestos related lung cancers and disease	Biological infections	Noise induced hearing loss
	Harmful exposure levels possible					
	Harmful exposure levels unlikely					
Paving Road and Highway Activity		Source of Exposure				
		C	C	C	C	P
1	Breaking out including hydro demolition					
3	Pile cropping					
4	Painting					
5	Installing drainage systems					

# Causes of ill health

Causes of Health Effect	Dust, mist, gas or fume	Solvents, chemicals and wet or abrasive materials	Asbestos dust	Microorganism contaminated land and water	Noise
Source of Exposure	C	Processes that generate or handling of hazardous or contaminated materials			
	M	Operation of mechanised plant and machinery			
	P	Operation of power tools			
	H	Manual handling of materials, tools and equipment			
	O	UV exposure from outdoor work			

# Health Hazard Identifier Table (HHIT)



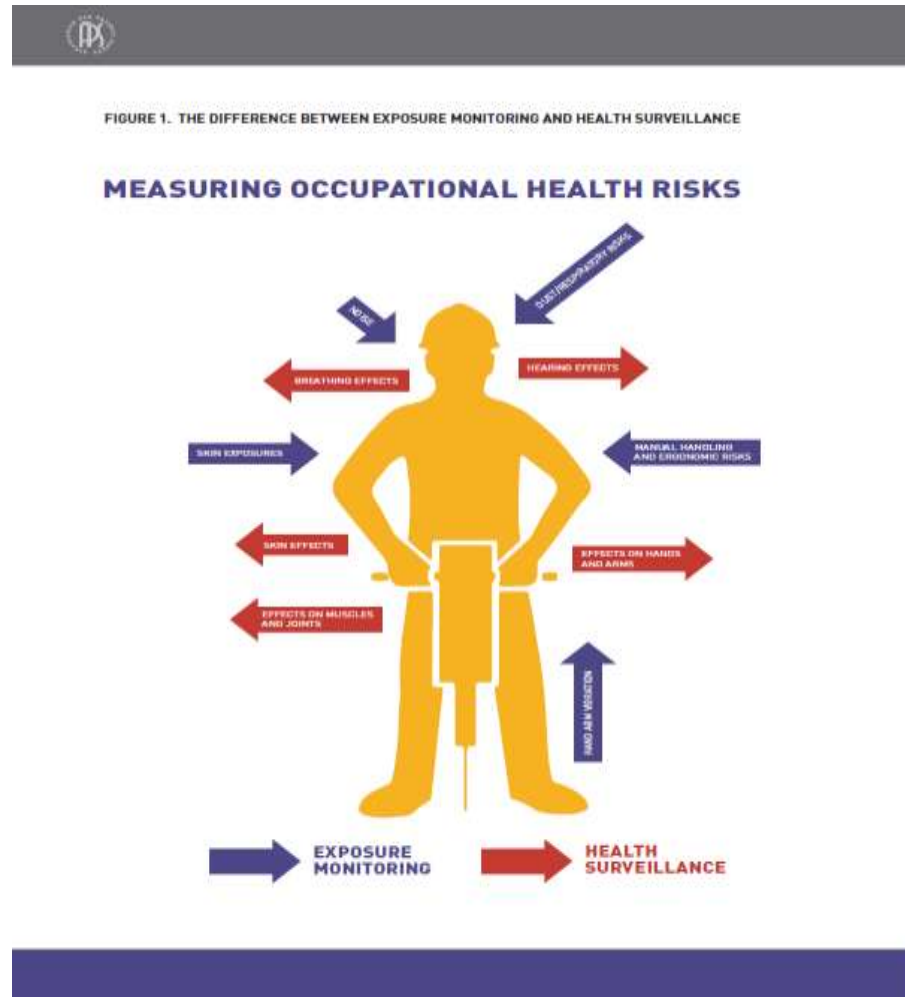
- Task
- Likelihood of exposure
- What the exposure is
- Source of exposure
- Potential health effect

Potential for Harmful Levels of Exposure Key		Potential Health Effect from Exposure																		
	Harmful exposure levels probable	Lung disease and respiratory effects	Skin disease (dermatitis)	Asbestos related lung cancers and disease	Biological infections	Noise induced hearing loss	Hand and arm nerve and blood circulation disorders	Musculoskeletal disorders	Musculoskeletal disorders	Skin damage and skin cancer										
	Harmful exposure levels possible																			
	Harmful exposure levels unlikely																			
Paving Road and Highway Activity		Source of Exposure																		
		C	C	C	C	P	P	M	H	O										
1	Breaking out including hydro demolition	C	C	C	C	P	P	M	H	O										
2	Excavation, Ground digging and Back Filling																			
3	Pile cropping																			
4	Painting																			
5	Installing drainage systems																			
6	Road stud milling																			
7	Removal of road marking (scabbling)																			
8	Removal of road marking (lance)																			
9	Surface laying; bitumen products																			
10	Surface laying; clay, blocks, flags, slabs, natural stone																			
11	Cutting paving units and surfaces																			
12	Surface laying; wet pour concrete																			
13	Surface laying; resins																			
14	Ground investigation (e.g. site and geotechnical surveys)																			
15	Site clearance																			
16	Ground improvement (e.g. mixing of lime, vibrocompaction)																			
17	Removal of infestations and droppings (e.g. birds rats)																			
18	Road Planning																			
19	Bridge Maintenance																			
20	Fencing – erecting boundary and noise protection																			
21	Installing vehicle restraints (e.g. bollards, crash restraints, barriers)																			
22	Installing street furniture (includes signage & ironwork)																			
23	Remedial works (road repair and maintenance)																			
24	Structure waterproofing and repairing																			
25	Installing expansion joints																			
26	Structure bearing replacement																			
27	Structure concrete coring																			
28	Highway road coring																			
29	Working near plant (noise and fume)																			
Causes of Health Effect		Dust, mist, gas or fume	Solvents, chemical and wet or abrasive materials	Asbestos dust	Microorganisms contaminated land and	Noise	Hand/arm vibrations	Body vibrations	Manual handling operations	excessive	UV radiation									
Source of Exposure		C	Processes that generate or handling of hazardous or contaminated materials																	
		M	Operation of mechanised plant and machinery																	
		P	Operation of power tools																	
		H	Manual handling of materials, tools and equipment																	
		O	UV exposure from outdoor work																	

# Health Surveillance and Monitoring



# Health Surveillance and Monitoring



# Badge scheme to reward and share good practice





# Key Performance Indicators - KPI

---

1. Training and information
2. Risk control tools and equipment
3. Personal Protective Equipment (PPE)
4. Health surveillance and monitoring
5. Risk elimination

# Badge

---

- Bronze - Availability and use
- Silver - Suitability
- Gold - Management arrangements

# Follow progress and participation

---

- Use of the badge scheme and performance indicators to reward good practice.
- Dissemination and use of the health surveillance and monitoring guide.
- Develop and use the hazard identifier table
- Input to project through web:

[HSE Web Communities - Paving, Road and Highways Supply Chain Project - Paving, Road and Highways Supply Chain Project](#)

# Any questions or thoughts?

---

