



# Craig Hatton

## Developing the Locality Approach in North Ayrshire

APSE Annual Seminar  
7<sup>th</sup> September 2016



# Developing a Locality Planning Approach

- Background to Locality Planning Approach
- Boundaries - Why are they important?
- Disaggregated data - a spatial approach to understanding community strengths and needs
- Key milestones & consultations to date
- Locality Partnerships – form, function & future

# Background to the Locality Planning Approach

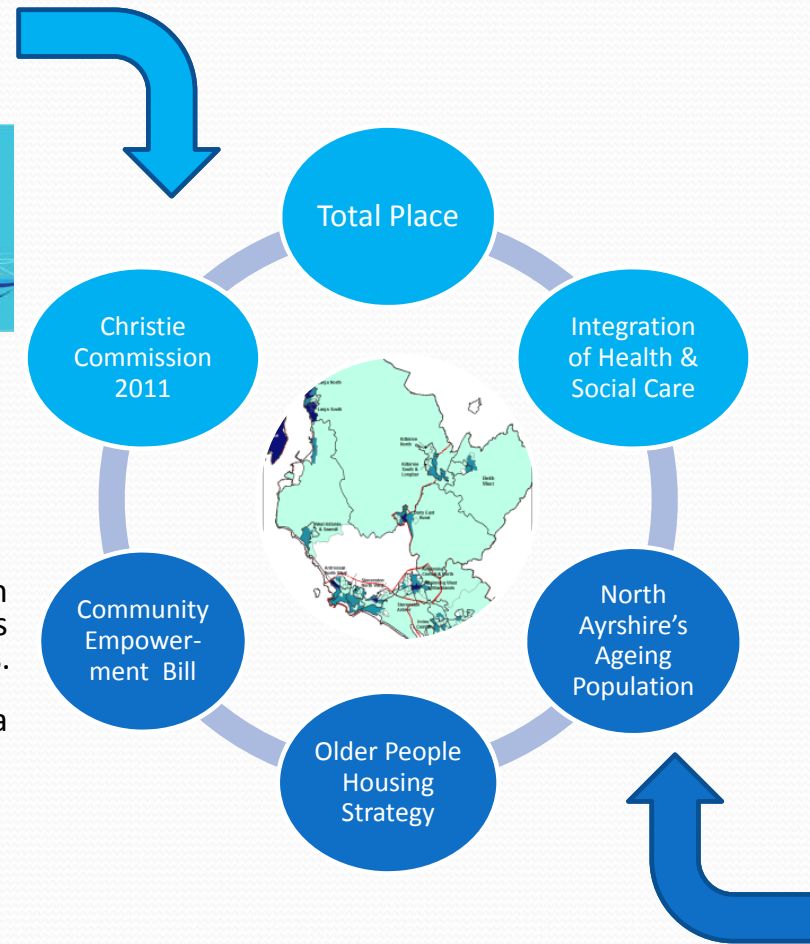


# Background: Locality Planning Approach

## National Agenda



- Target the underlying causes of inter-generational deprivation
- Highly localised disaggregated data which targets the specific needs of deprived communities.
- Introduce consistent data gathering
- Robust examination of needs & strengths



## Local Agenda

- Reducing budgets and increasing service demands
- Making it easier for communities to take part and have their say on local services
- Helping communities to own land and buildings in their area



# Christie Commission

## Four pillars of reform



### PEOPLE

- Empower individuals and communities
- Involve them in design & delivery of services they use



### PARTNERSHIP

- Use Partnerships to integrate service provision
- Improve the outcomes they achieve



### PREVENTION

- Prevent negative outcomes
- Prioritise spend on prevention activity



### PERFORMANCE

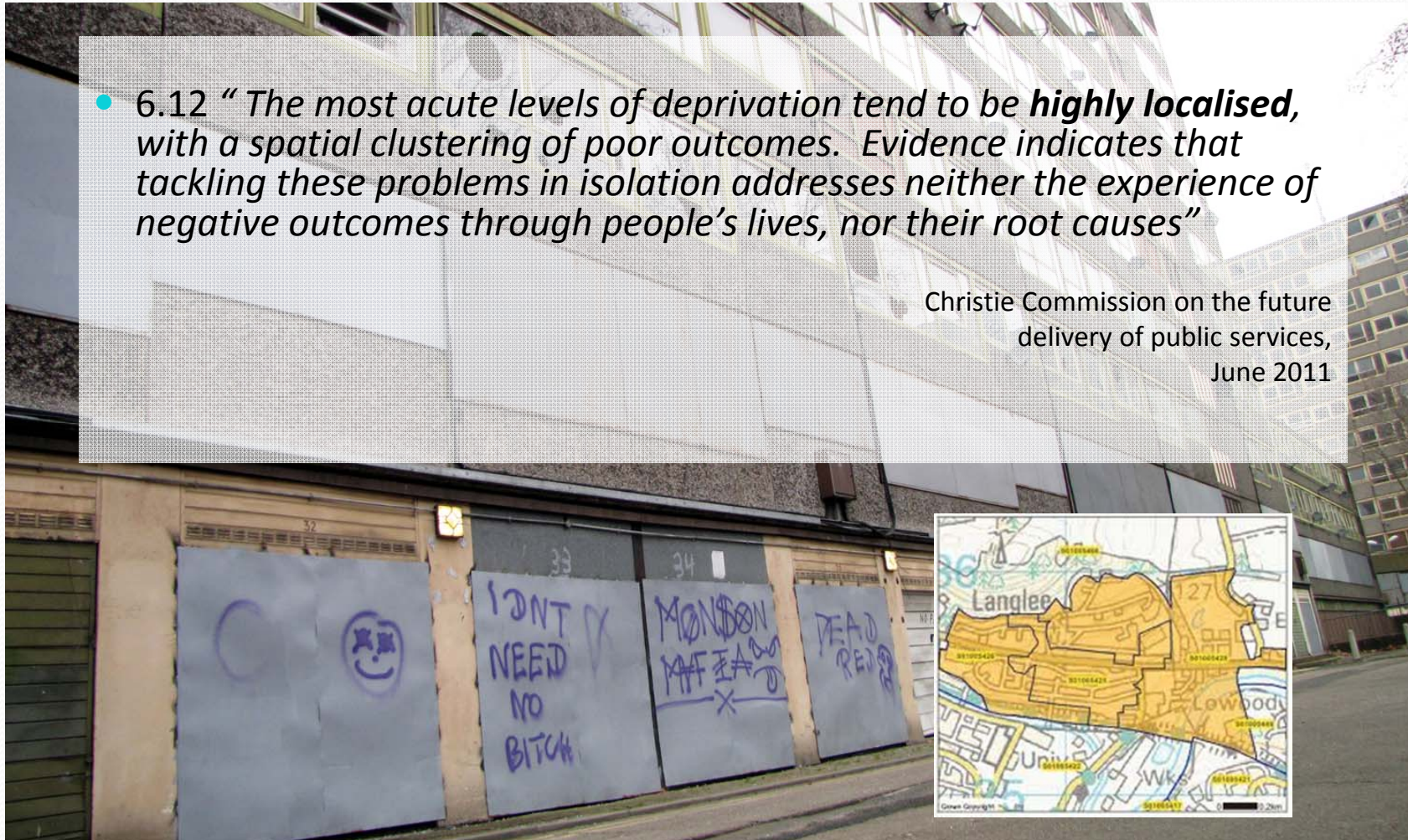
- Share services where possible
- Reduce duplication

COMMISSION ON  
THE FUTURE DELIVERY  
OF PUBLIC SERVICES

# Christie Commission...

- 6.12 “The most acute levels of deprivation tend to be **highly localised**, with a spatial clustering of poor outcomes. Evidence indicates that tackling these problems in isolation addresses neither the experience of negative outcomes through people’s lives, nor their root causes”

Christie Commission on the future  
delivery of public services,  
June 2011



# The link is.....PLACE



# Boundaries

Why are they important?

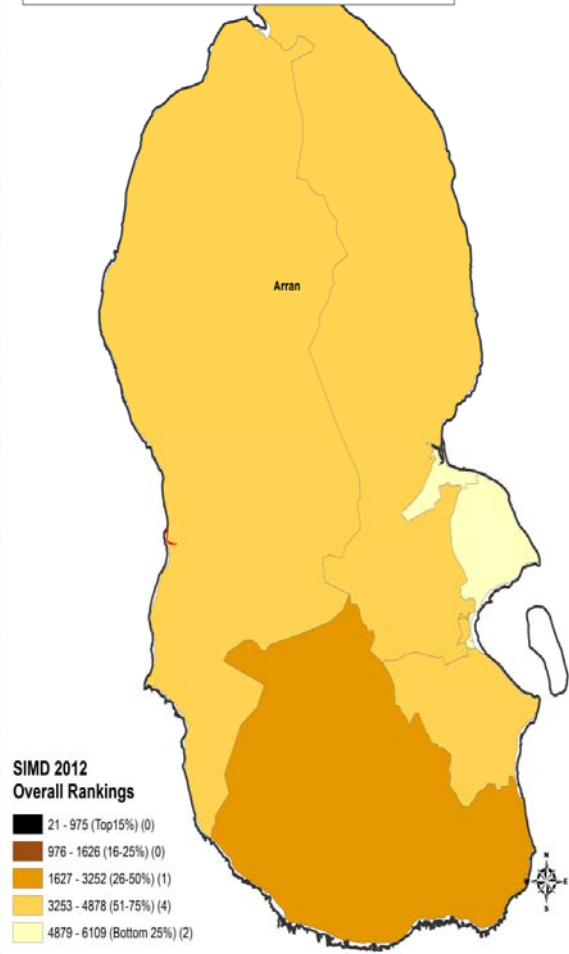


## Locality Boundaries

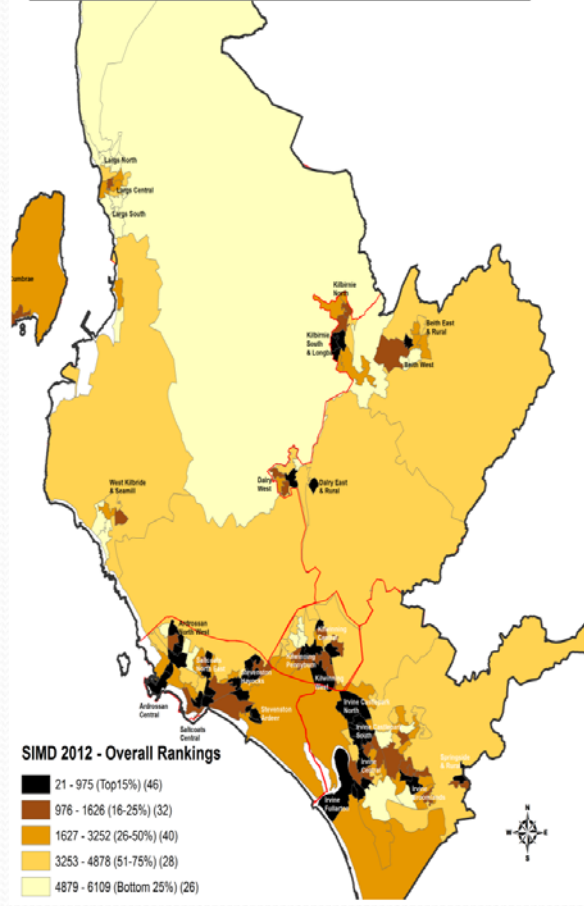
- 6 localities
- Socio-economic logic
- Not constrained by population thresholds
- Built upwards from datazones (approx. 800 people)



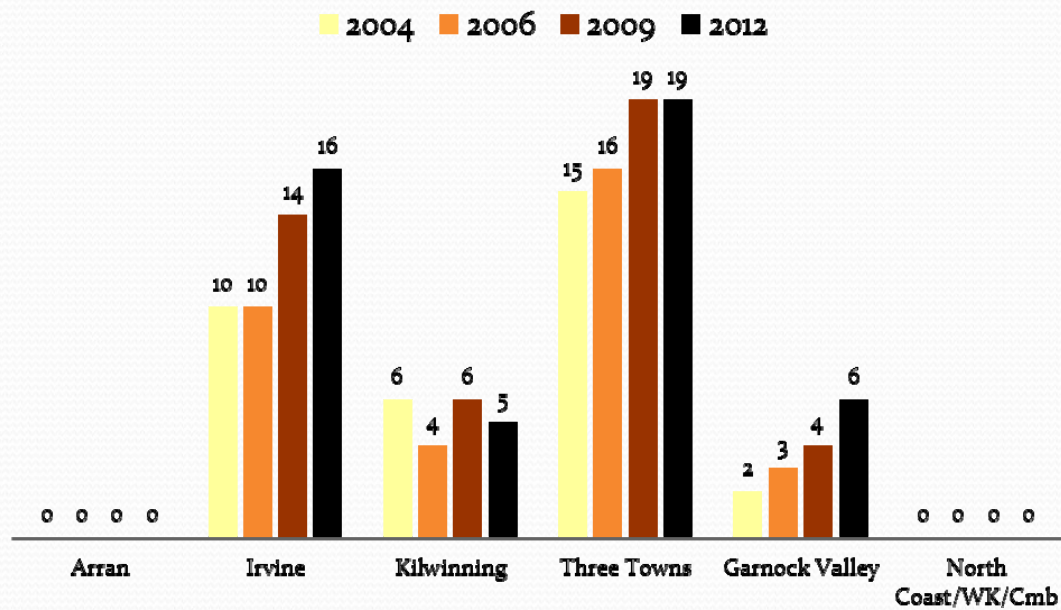
**SIMD 2012 Overall Index Rankings  
by Neighbourhood and Datazone (Arran)**



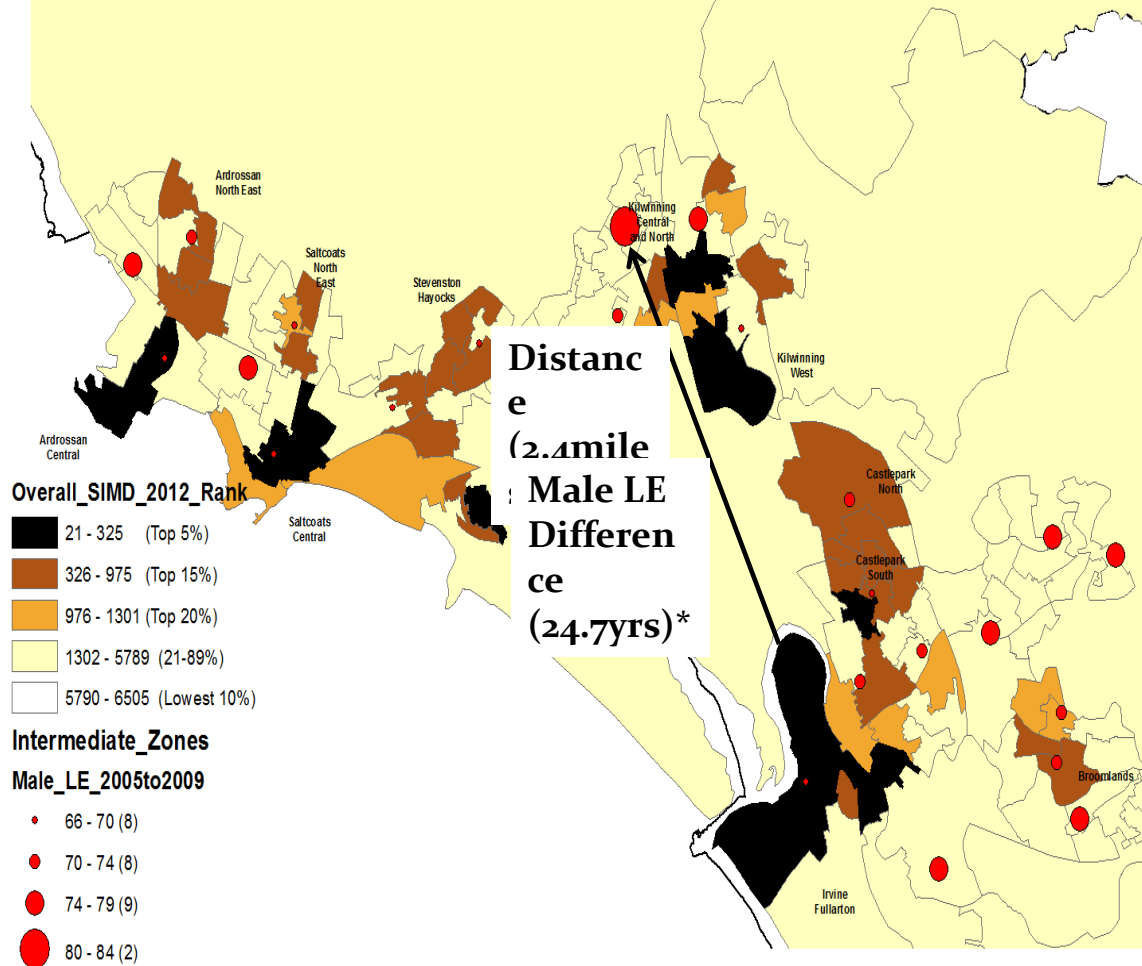
**SIMD 2012 Overall Index Rankings  
by Neighbourhood and Datazone (North Ayrshire)**



## Datazones in top 15% most deprived by North Ayrshire Neighbourhood (SIMD 2004 to 2012)



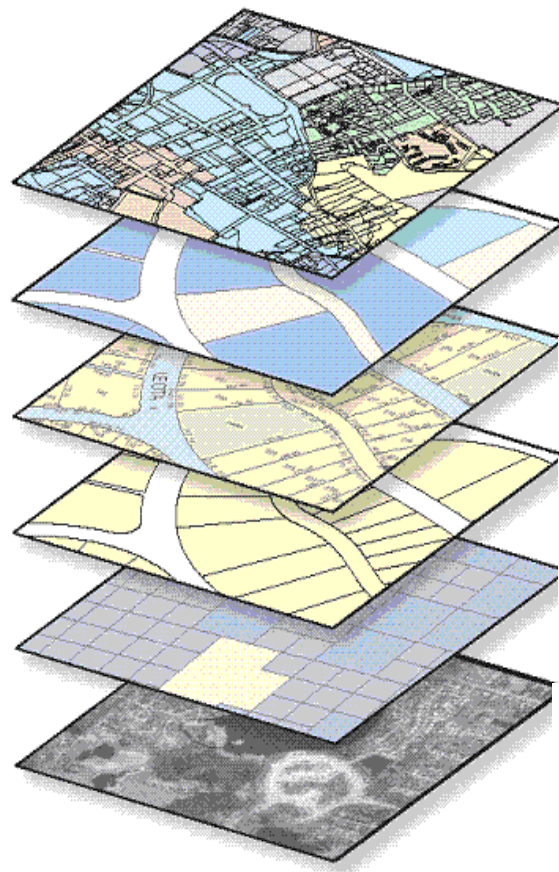
## SIMD 2012 - Overall Rankings & Male Life Expectancy - North Ayrshire (Irvine / Kilwinning / Three Towns Neighbourhoods)



# Disaggregated data

Using a spatial approach to understand local priority needs

# Profiling = Layering data



## Neighbourhood Intelligence

Community Safety

Health data

Socio-economic

Demographics

Ordnance Survey



Crime rates / Fear of crime

Patients / Care provision /  
Life Expectancy

Employment / Incomes / Education

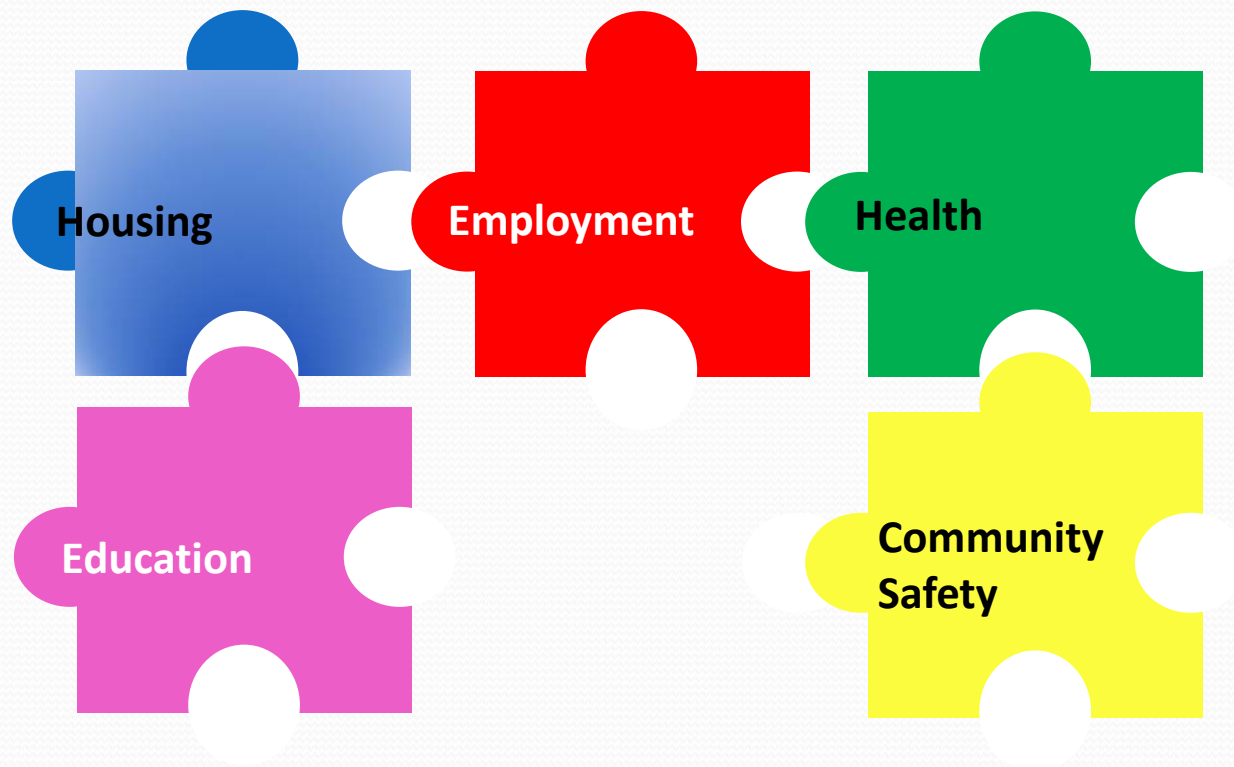
Age / Gender / Household size

Local Context  
(Roads / Housing / Schools /  
Public Buildings / Open spaces)



.. and capturing reality on the ground!

# Quality of Life jigsaw?



# Community finishes the jigsaw!





# Key milestones

Consultation & public engagement

# Key milestones

2012/13

- **Vision workshops** (2012) – a series of stakeholder workshops to scope the concept, aims and potential applications of Neighbourhood Planning in North Ayrshire
- **New Boundaries** - Options for establishing new Neighbourhood Planning boundaries based on the most robust criteria, presented to CPP Board with six neighbourhood boundaries approved (2012). These were *Arran; Irvine; Kilwinning; Three Towns; Garnock Valley; North Coast, W.Kilbride & Cumbrae*
- Pilot **Joint Asset Review** with NHS Ayrshire & Arran (2013) to identify sites with development potential for co-located services
- **Geographic Evidence** - first spatially based area profiling of small area strengths and needs developed as suite of Areas of Family Resilience reports (Sept 2013)
- **CPP seminar** addressed by **Professor Carol Tannahill** (Glasgow Centre for Population Health) to present GoWell Project findings on the theme of '*community resilience*'



# Key milestones

## 2013/14

- First series of six **Neighbourhood Planning Forums** organised and delivered **Winter 2013/14**. Over 24 speakers & up to 200 delegates including key CPP Partners, elected members, community council chairs, representatives of local associations and schools attended venues across each of the six neighbourhoods
- ***You Said, We Did*** - Local key priorities were identified for each neighbourhood, while representatives from established community associations discussed examples of 'local resilience' in their communities
- **Resource Mapping** exercise - first cut exercise takes lead from Christie Commission demonstrating potential for further development and linkage to future Neighbourhood Plans
- **Data Sharing** - Consulted wide range of Partner agencies on potential for data sharing and development of a Data Asset Framework (2013)



# Key milestones



## 2014/15

- **Good Practice** – Visits to City of Edinburgh Council (West Edinburgh Partnership) and East Ayrshire CPP (North West Kilmarnock Area Centre) to explore aspects of good practice in Neighbourhood Planning and co-located services
- **Sept 2014** - Consultation programme for developing **options** on new governance structures for emerging Neighbourhood Partnerships approved by CPP Board
- **Nov 2014** - Series of **pre-engagement workshops** held with elected members, CPP Board members and the Community Engagement Reference Group on Locality Planning issues providing a mandate for further consultation
- Six **Locality Planning Workshops** held **Feb/Mar 2015** to discuss benefits & risks of Locality Approach and how community councils could be improved

# Key milestones



2015/16

- **ECMT Collaborative Workshop** to discuss how NAC services could be reconfigured around localities (Feb 2015)
- Interim **Programme Board** approved by CPP Board to manage the final implementation and emerging **workstreams** in support of the wider approach (March 2015)
- **ECMT/SNP** Collaborative workshops on proposed **functions** (27/4/15) & shortlisted **Governance Options** for new Locality Partnerships (8/6/16)
- **Special Council** (25 May 2015) – Approves new ward boundaries aligned to localities for submission to Scottish Electoral Boundary Commission
- ‘**Neighbourhoods**’ become ‘**Localities**’ as agreed by Neighbourhood Approach Transition Board aligning with HSCP & guidance on Locality Planning (6 July 2015)
- **Members Seminar** to mandate principles for constitution of new Locality Partnerships to take to wider community consultation (14 Aug 2015)
- **Autumn 2015** – Third round of **community based workshops** planned to approve governance arrangements for Locality Partnerships

# Locality Partnerships

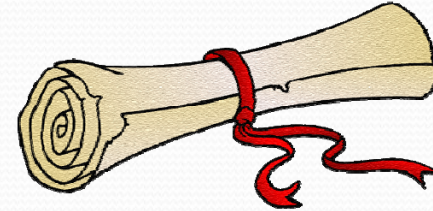
Proposed governance principles

# Who sits on Locality Partnerships?

- Chaired by elected member
- Core membership
- Co-opted membership
- Consensus driven decision making
- Local Thematic Task Groups
- Participation by Expertise
- Annual Locality Forum
- Convene at least 6 meetings per year.



# Guiding principles



- Agreed Terms of Reference for Locality Partnerships.
- Guide future service development and delivery
- Community empowerment embedded
- Shared understanding of local assets, needs & priorities
- Partnership Agreements with Community Councils
- Grow community capacity



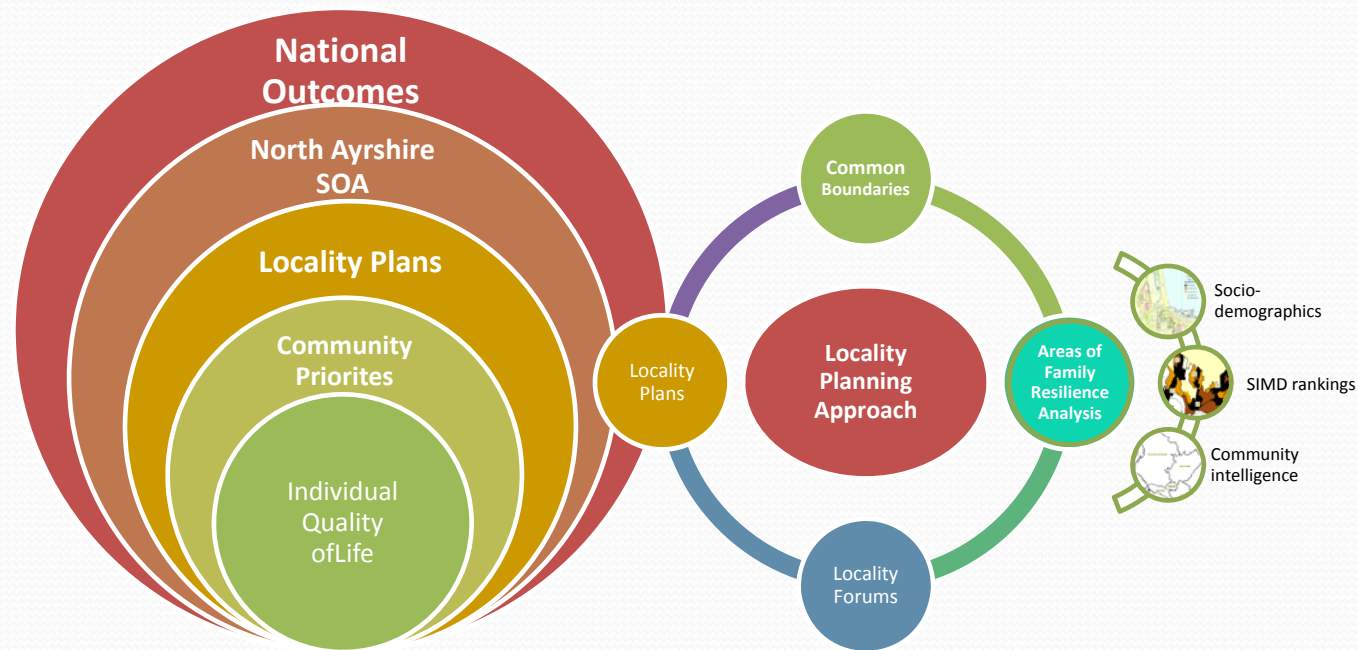
# What will they do?

- Provide local leadership
- Develop Locality Partnership Plan
- Promote CPP partner aims strategic planning policy
- Allocate grants
- Develop and implement Participatory Budgeting
- Forum for community engagement
- Develop innovative joint ideas and solutions
- Commit to improved equality in Localities
- Positively promote civic pride within Localities



# Locality Partnerships – A future framework?

Figure 1.1 North Ayrshire Locality Planning Framework



Locality Plans will include HSCP Local Plans and Local Economic Plans

GP clusters will be aligned to localities



**Thank you for Listening**



**North Ayrshire Council**  
Comhairle Siorrachd Àir a Tuath