



Damian Walshe

Head of Fleet & Logistics Management
Services

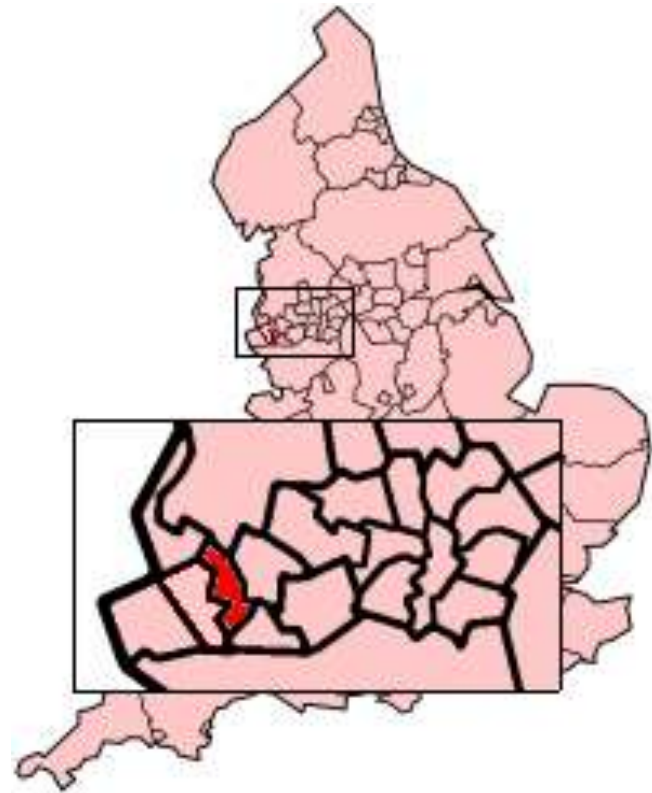
Knowsley Metropolitan Borough Council

Delivering a transformation programme
and income generation in fleet and
transport services



Knowsley MBC

- Population 146,000
- 63 Labour Councillors
- Home of Knowsley Safari Park
- Geographic Location



The future is Knowsley



Responsible For

- KMBC Diminishing Fleet of 150 Vehicles and 300 items of plant
- External Fleet Maintenance contracts for over 250 Vehicles
- Two large operational depots
- One central fleet maintenance workshop
- Stores, depot and delivery operations
- 22 full time staff



Stretton Way Depot Huyton Merseyside







Lancashire County Council

- 19 Years at Lancashire CC as Fleet Manager
- Five workshops 64 skilled staff
- LCC fleet management/maintenance of over 1200 vehicles and 900 plant items
- Fleet Maintenance of over 1000 external customer vehicles including all Lancashire Fire Service and 15 other Local Authority vehicle fleets
- Range of other smaller organisations



KMBC Partnership Working – External Customer Base

- Scottish Southern Energy (SSE)
- Street Lighting and Signs PFI contractor
- 25 Year PFI contract including office/depot rental
- Initial 5 Year SLA for Fleet Maintenance relating to over 35 vehicles
- Vehicles up to 7.5T with Lex Autolease
- Vehicles over 7.5T with SSE
- Additional SSE contract to maintain 5 vehicles previously maintained by a main dealer

SSE Stores and Parking Area





KMBC Partnership Working – External Customer Base

- AK Lighting
- Highways and Lighting Contractor
- 5 Year SLA for maintenance of 13 vehicles and 2 mini excavators
- Request to maintain 3 lease cars
- 5 Year lease agreement for depot compound



AK Lighting Compound





KMBC Partnership Working – External Customer Base

- Over 30 SLA's for school minibuses
- Knowsley Probation Services
- 5 Year SLA for maintenance of 6 vehicles and Parking for 5 vehicles plus 2 x ISO containers at £500 per bay per year
- Key cabinet storage for vehicle keys
- £50 per week charge for use of drive through wash



KMBC Partnership Working – External Customer Base

- Vehicle and Operator Services Agency - VOSA
- 5 Year lease agreement for office area, workshop and car parking
- Significant investment by VOSA in developing the office and workshop facility
- Initial on-site roadside checks using KMBC depot and weighbridge
- Ongoing negotiations on possible night time rental of KMBC LGV test lane and vehicle maintenance SLA



VOSA On-Site Vehicle Inspections





VOSA Motorcycle VIC Test Area





Benefits

- Additional income
- Over £60k income per year for fleet maintenance operations
- Over £130k per year for office and depot rental
- Premium hourly rate at £42/hour compared to standard in house rate of £36.50/hour
- Expanded customer base that mitigates the risk of loss of work
- Enhanced skills and motivation for workshop and depot staff
- Utilisation of spare capacity



Challenges

- Onerous procedures for work orders and invoicing, documentation etc
- ICME/Main Dealer repair times
- Additional training needs for a more diverse fleet range
- Additional imprest stock and supplier accounts
- Mixed priorities for both internal and external customers
- Ensuring compliance with all relevant regulations - VOSA on site
- Increased risk for the organisation/Council



Need to Improve Facilities

- The organisation needs to be professional and match fit at the outset.
- My belief is that if it looks right it probably is and if it doesn't then it probably isn't and you need to do something about it!
- What Knowsley MBC main depot and workshop used to be like and what it is like now.

Supervisors office in the workshop





Fitters canteen in the workshop



The future is Knowsley



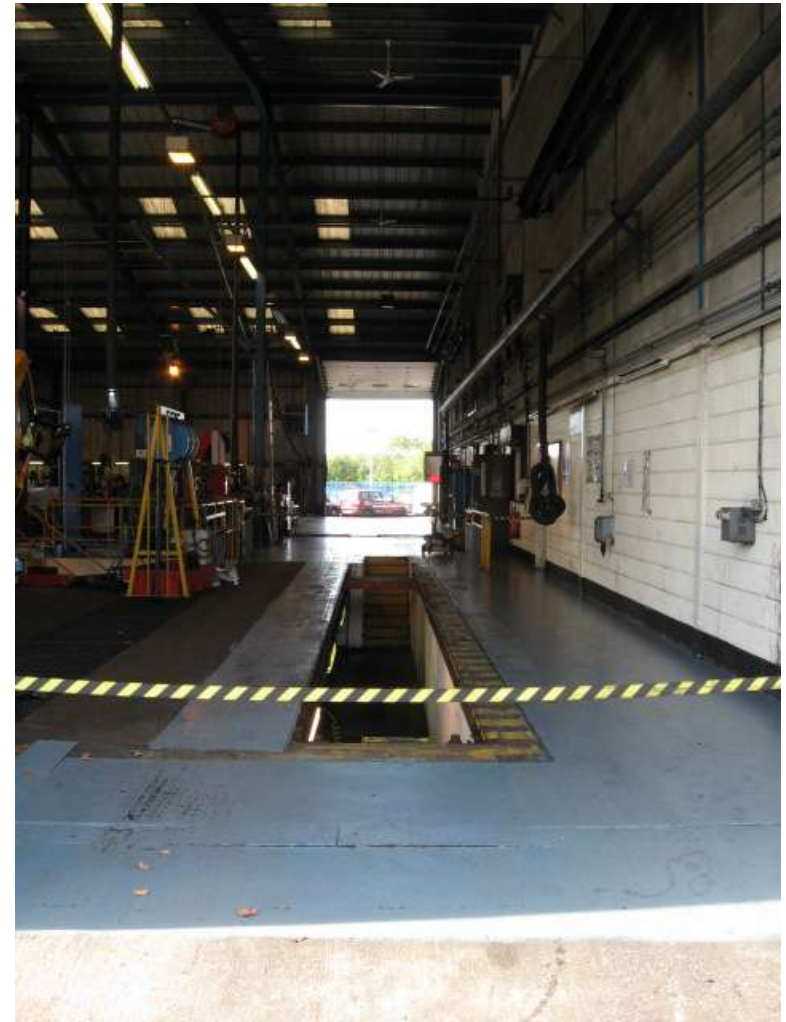


Supervisors Office and Fitters Canteen Facility





Main Workshop Pit Facility

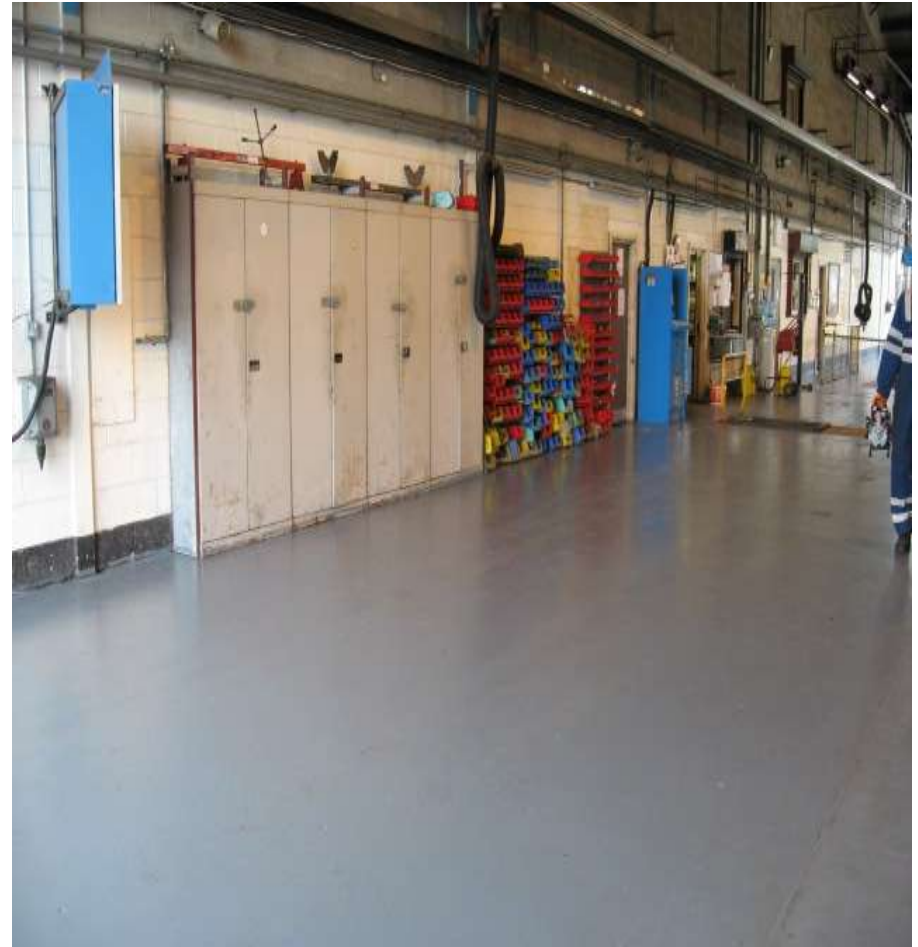


Oil Dispenser and other liquids





Bunded oil barrels and general workshop area



Mechanics Toolboxes



Mechanics Toolboxes





Moving Forward

- Need to mitigate any future losses as a result of reduced spending plans
- Examining what other work is available to us:
 - Additional private MOT's including repairs
 - Additional school coaches/minibuses
 - KHT maintenance contract
 - Other neighbouring LA maintenance work where welcomed
 - Other local public or suitable private bodies
 - Depot/office spare capacity



Questions?

damian.walshe@knowsley.gov.uk

Telephone: 0151-4432416

