

Work related Driver safety

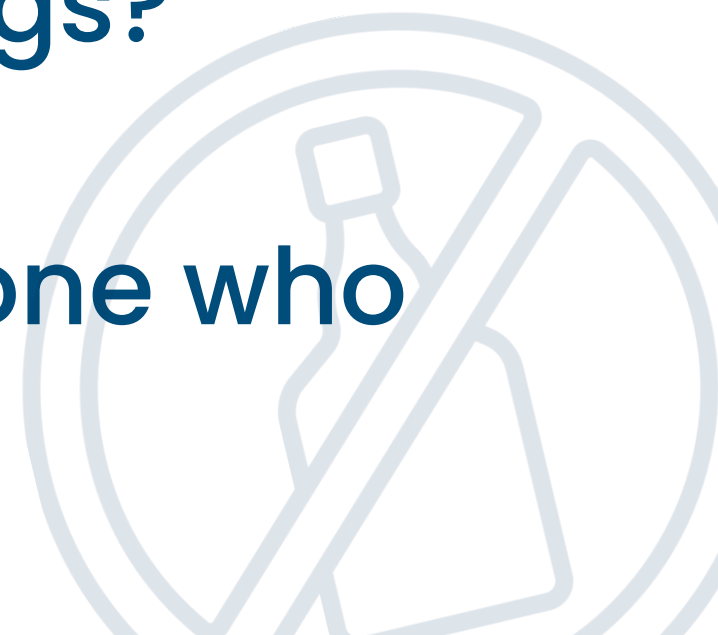
Drug Driving: The scale of
the problem across the
Industry



How many here drink alcohol?

How many here take drugs?

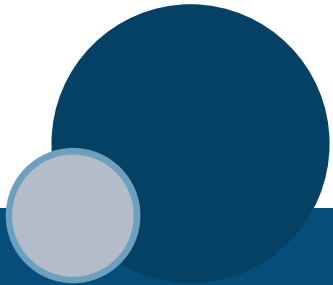
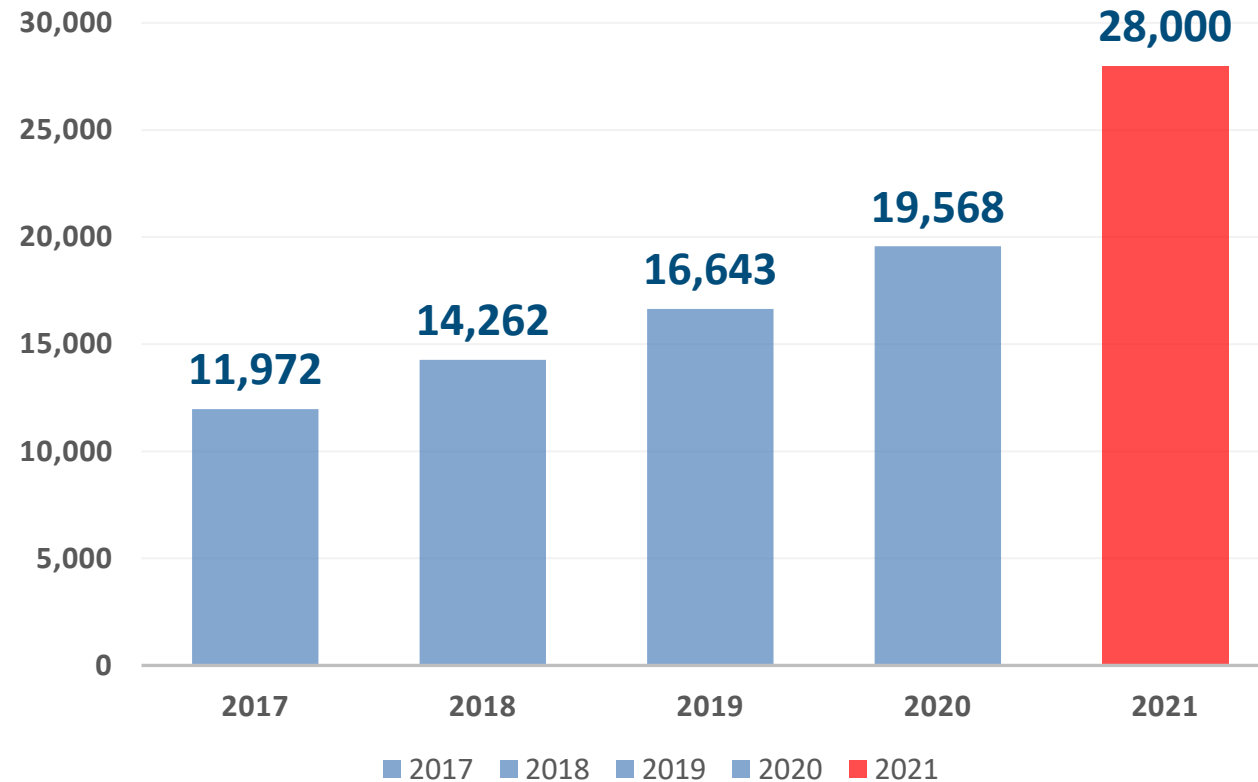
How many here know someone who
takes drugs?



Why this subject and why now?

Recent police figures show Drug Driving offences have **doubled** since 2017

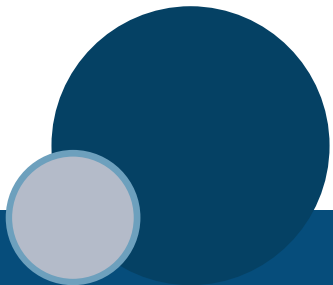
Number of Drug Driving Bans in the UK



Police December Op Limit results revealed

Over 31 days...	Tests conducted	Positive, failed or refused	6,616 Total drink and drug arrests
Drink	49,812	9.5%	1 in 4 Forces reported equal or #moredrugsthandrink
Drug	6,846	48.5%	

These shocking figures highlight the increasing drug driving issue - are you sure your employees are fit to work whilst undertaking their daily role?



Merseyside December Op Limit results

469

Drug Drivers arrested
in 31 days

191

Drink Drivers arrested
in 31 days

2 in 3

Were arrested for
Drug misuse



In previous years, between 1/3 and 1/2 of people arrested were, or would be, driving for work

Merseyside 2023 Drug Driving Results

2,730

Drug Drivers
arrested in 2023

227

Per month on average

=

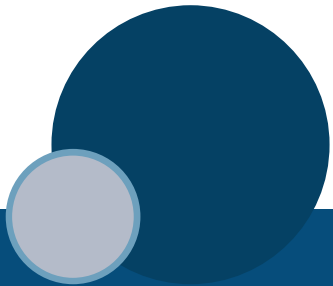
53

Per week on average

=

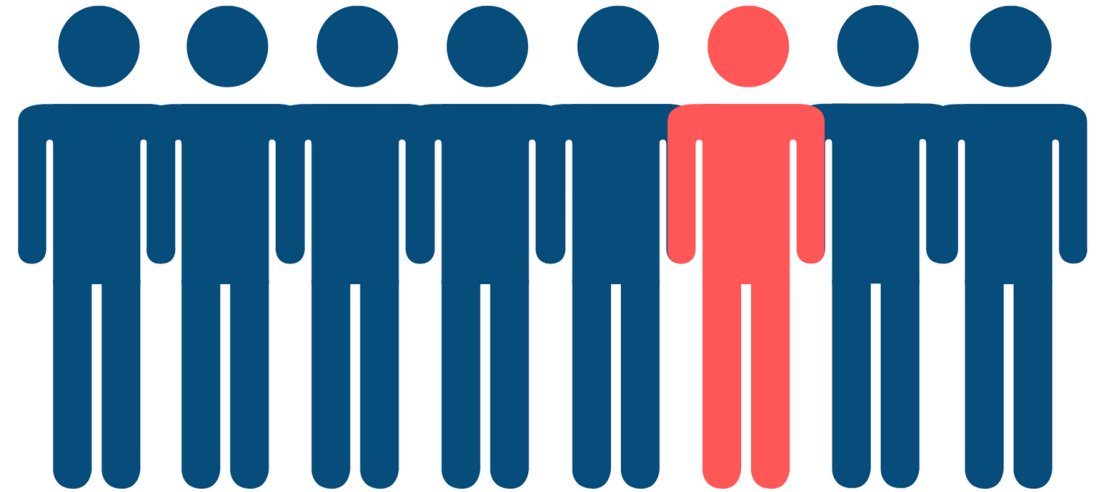
7

Per day on average



BUSINESSES ARE NOT IMMUNE

The statistics show that last year
one in eight
under 35s were using cannabis and
one in fourteen
of all employees were too.



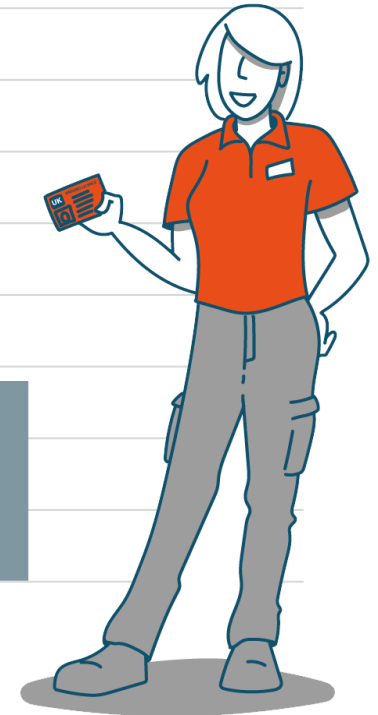
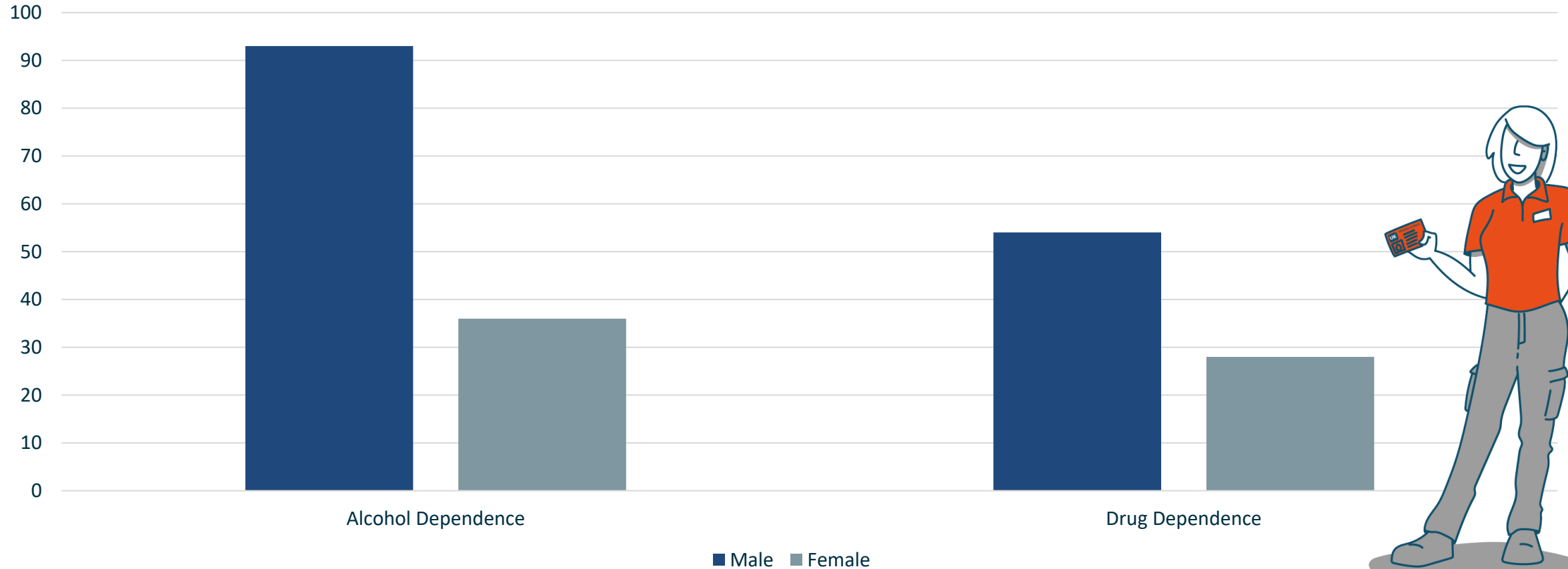
Do you know who the drug users are within your workplace?

What are you doing to combat this problem within your workforce?

Who causes risk?



Prevalence of Drug and Alcohol Dependence by Sex in England



85% of Traffic Offences are committed by Men

Statistics across Industry



27% of employers say drug misuse is a problem at work, while **60%** have experienced problems due to staff drinking alcohol.

One third of all serious and fatal road collisions involve someone who is **driving for work**.



Drug and alcohol abuse is higher among those male workers aged 18-49, with 21% admitting to using illegal drugs in the past year.



Hidden Cost of Substance Abuse In the Workplace

17 million working days are lost each year in the UK due to alcohol misuse alone.



40% of industrial **accidents** are linked to substance abuse.

What would the impact to your organisation be?



66% of adult drug users are employed.

Are you aware who the drug users are within your organisation?



22% of employees admit to making a mistake at work, as a result of being hungover.

What impact do mistakes have on your organisation?



Employees in organisations without a drug screening programme have **30-40% higher** self reported substance use.

ROBUST PROCEDURES

HSE, the national independent regulator for health and safety in the workplace advise all companies to:

“remind their riders and drivers they must not drive under the influence of drink or drugs, including prescription drugs”

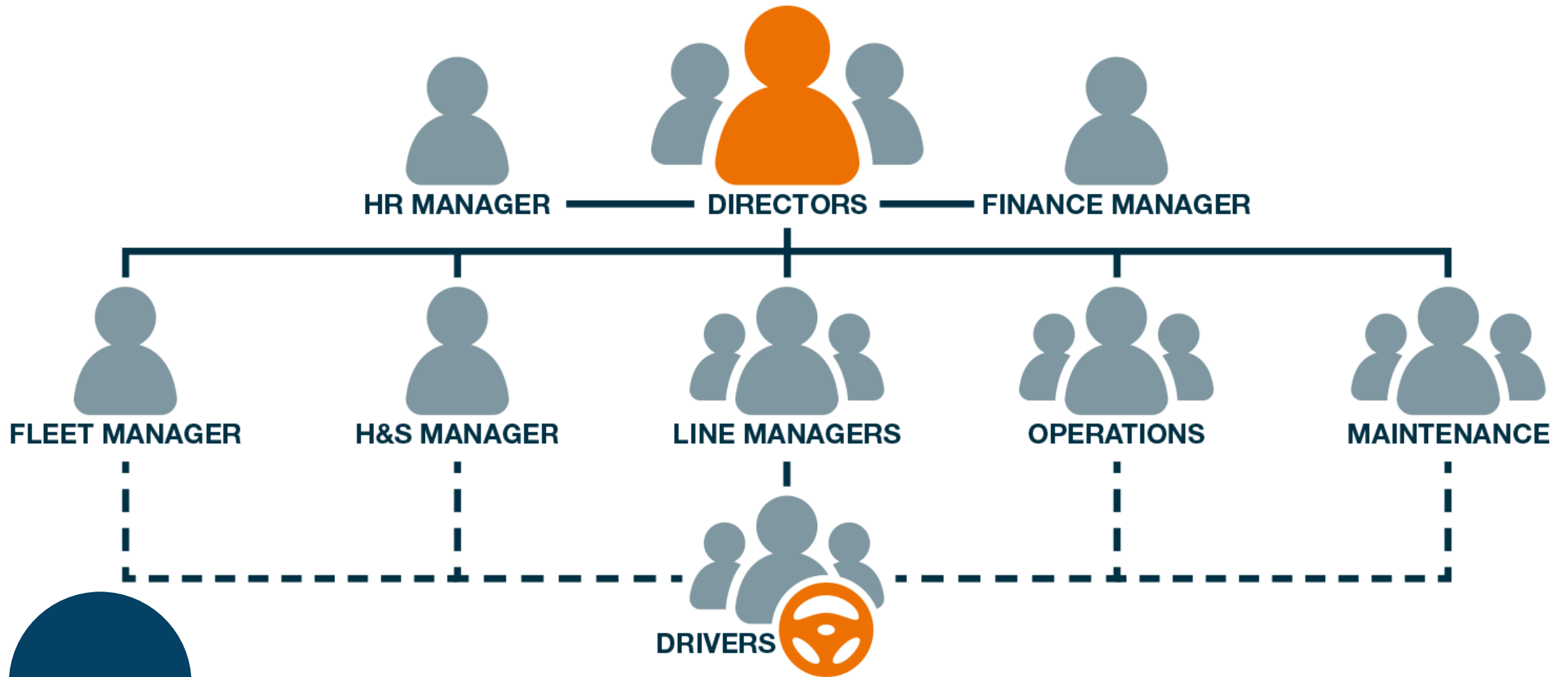
By implementing robust policies together with the presence of potential testing, maintains a firm reminder to the workforce of the consequences of not taking the issue of drugs and alcohol seriously.



Luke Norton – Van Driver

“Drug driver jailed for killing devoted parents of two girls near Cambridge after falling asleep at the wheel”

A shared responsibility



POLICY, EDUCATE, DETER, DETECT

All organisations should take a proactive approach to managing drug and alcohol misuse within the workplace, this starts with

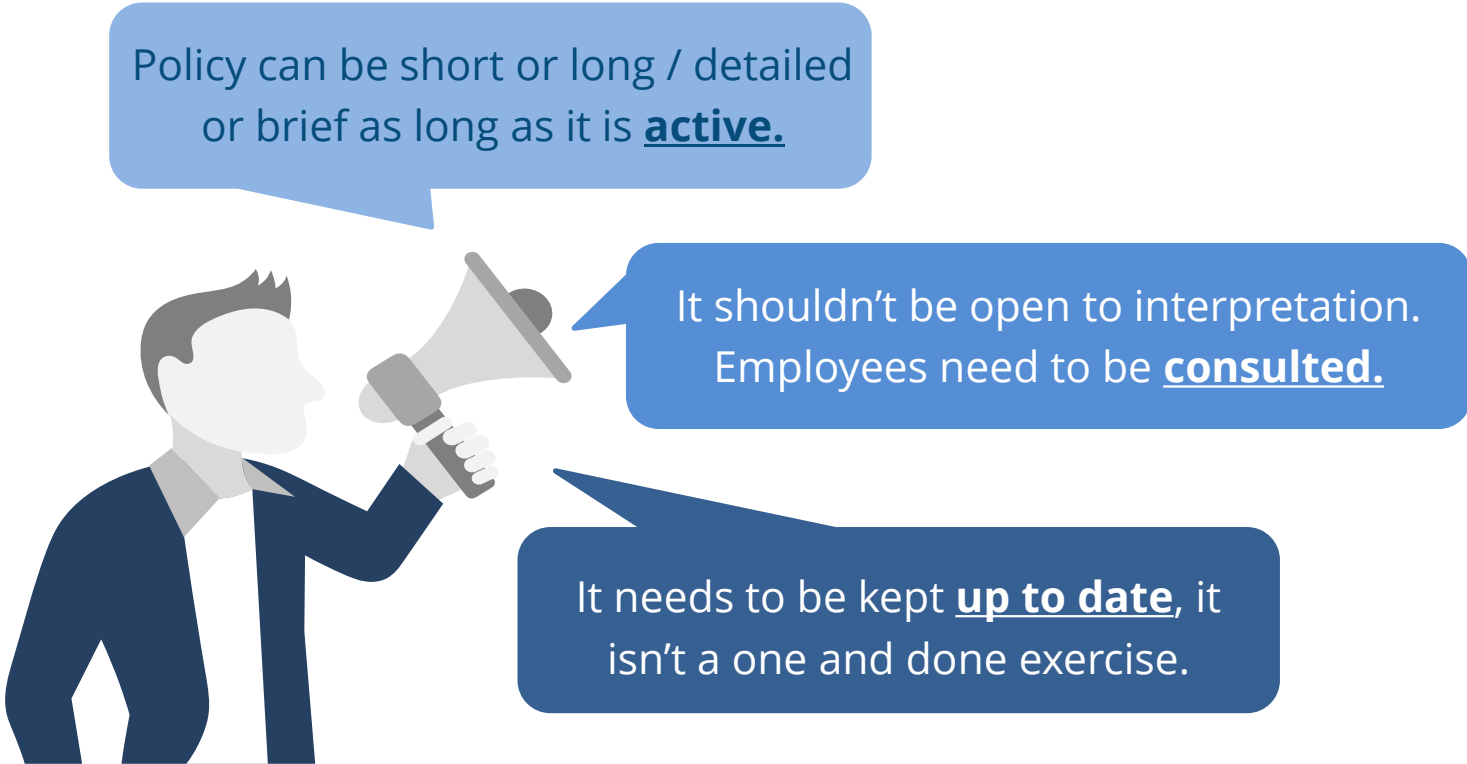
POLICY	EDUCATE	DETER	DETECT
A clear policy	Insightful Education Make employees aware support is available	A credible deterrent	A robust screening process Understanding that detection WILL lead to disciplinary

Education is the key component!

The Importance of Policy

'It shall be the duty of every employer to ensure, so far as is reasonably practicable, the health, safety and welfare at work of all his employees'

Health & Safety at Work Act, 1974



Policy can be short or long / detailed or brief as long as it is **active**.

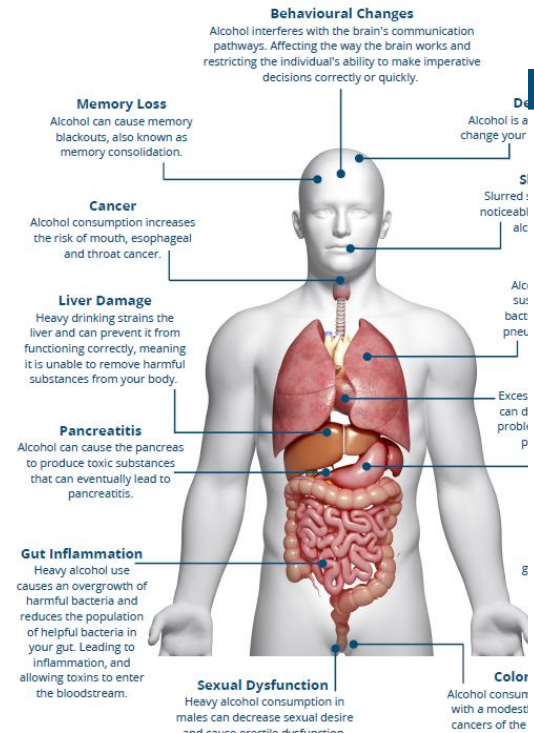
It shouldn't be open to interpretation. Employees need to be **consulted**.

It needs to be kept **up to date**, it isn't a one and done exercise.

EDUCATION: THE EFFECTS OF ALCOHOL & STIMULANTS

Effects of Alcohol on the Male Body

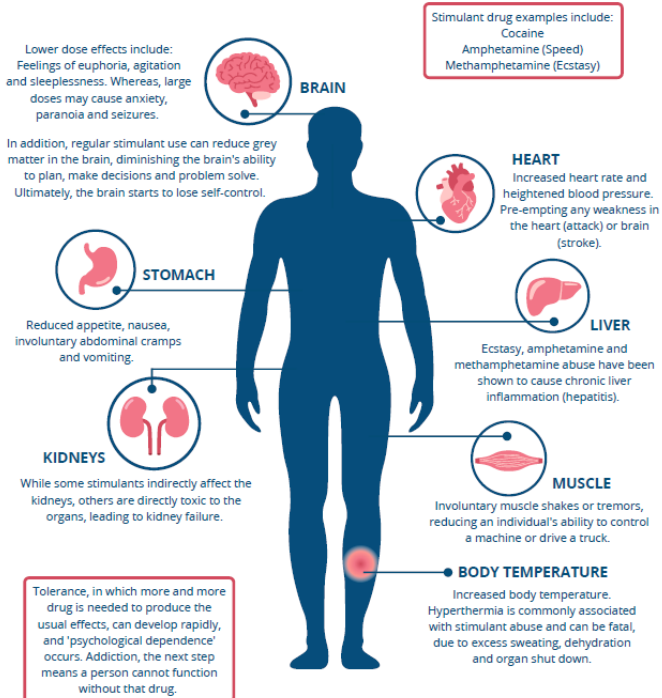
Alcohol is a powerful chemical that can affect almost every part of your body including:



www.dteinternational.com

Effects of Stimulants on the Body

Stimulants are a class of psychoactive drugs that affect the brain and speed up the activity of the central nervous system, resulting in individuals feeling more awake, alert, energetic but also over confident and more likely to take risks.



www.dteinternational.com

0800 371898

Most people are **naïve** to the effects of drugs and alcohol, even the drug users themselves.

Education is fundamental to a successful drug and alcohol screening programme.

How many of you can confidently explain the effects of taking drugs and alcohol?

SPOTTING THE SIGNS

**It's all about
prevention**

Engage as often as you can




Appearance

Punctuality

Minor mistakes

Training for all employees

SPOTTING THE SIGNS

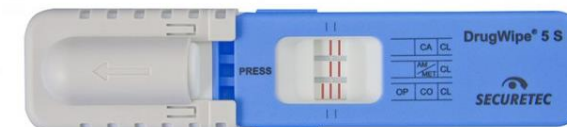
Constricted Pupils	Red Eyes	Dilated Pupils
		
<p>Heroin Morphine Oxycodone Fentanyl Methadone Codeine Hydrocodone</p>	<p>Marijuana Cocaine or Crack Benzodiazepines (i.e. Xanax) Depressants (i.e. Alcohol or Sedatives)</p>	<p>Amphetamines Methamphetamines Cocaine or Crack Hallucinogens (i.e. LSD or mushrooms) Opiates (prescription painkillers) Heroin Marijuana Speed</p>

WHAT YOU NEED TO LOOK FOR IN EQUIPMENT

DIGNITY



Non-invasive



PORTABILITY



No readers or additional kit required

RELIABILITY



Supplied to all UK Police Forces



EFFICIENCY



Results in less than 5 minutes on-site

WHAT YOU NEED TO LOOK FOR IN A SUPPLIER

CREDIBILITY



**Suppliers to all UK
Police Forces**

CAPABILITY



Over 25 years experience

RESPONSIBILITY



**End-to-End Support
including training**

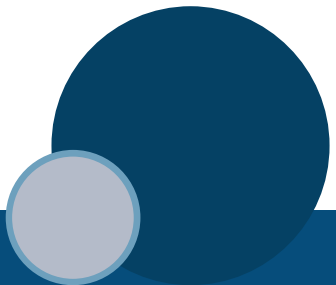
ACCOUNTABILITY



**Provision of a full
spectrum solution**

Final Question

Given what you have heard today, do you believe you need to update your current policy, procedures, training and support mechanisms?



Thank You

Daniel Jones



www.dtecinternational.com



daniel.jones@dtecinternational.com



07498 465650

