

# Warrington BC

---

## APSE – Big Energy Summit 2018

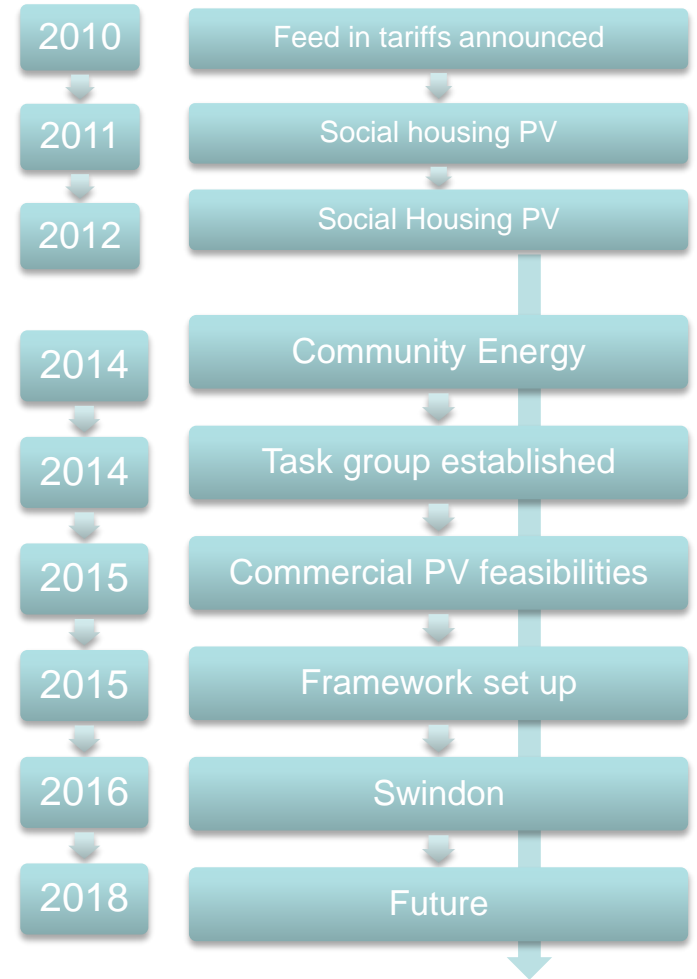
9<sup>th</sup> March 2018

**Danny Mather**  
**Head of Corporate Finance**



# Overview

- WBC
- Approach
- Progress to date
- Case Studies
- Investments
- Future
- Q&A



# WBC

- 205k population
- High economic growth
- 2017/18 Budget: £136.4m
- Low funding base
- £1.3bn Capital Programme
- Made £45m of savings
- £26m savings next 3 yrs

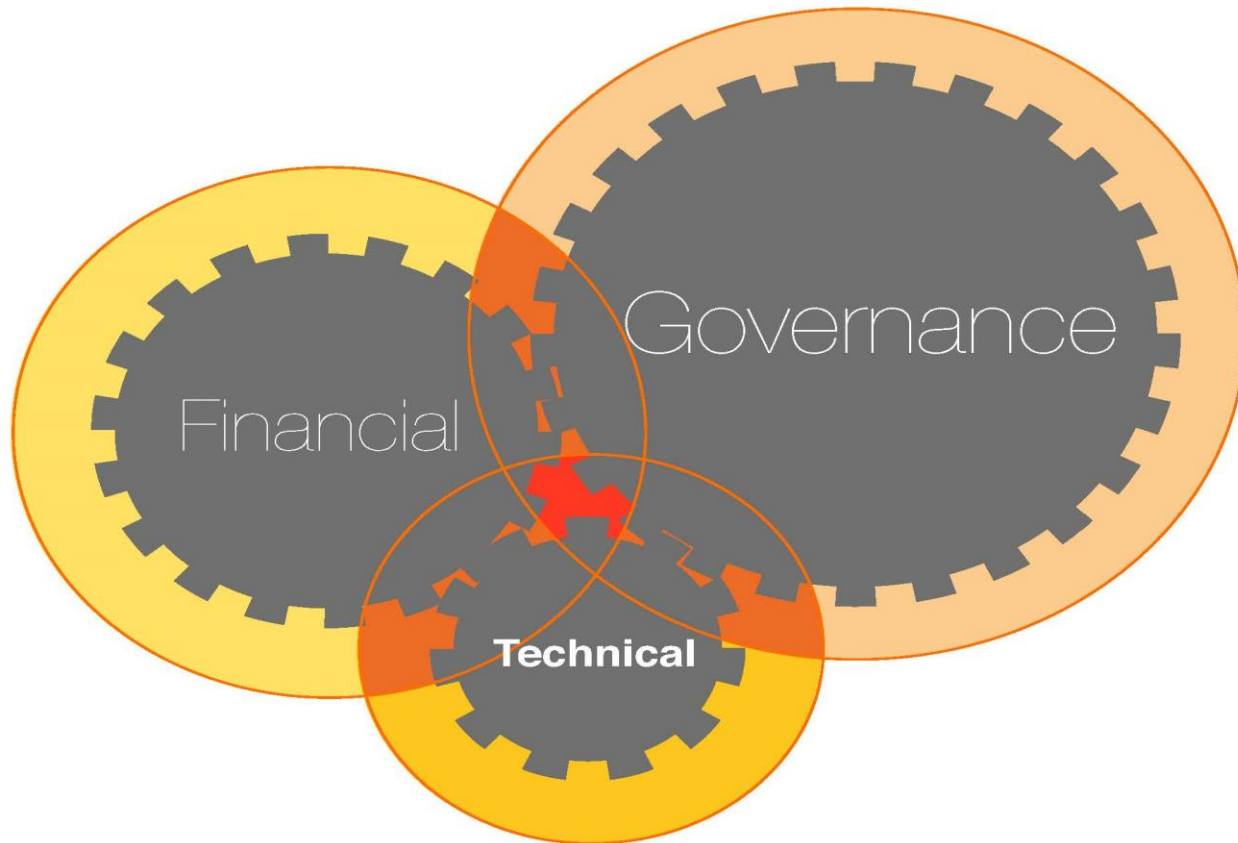


# Objectives

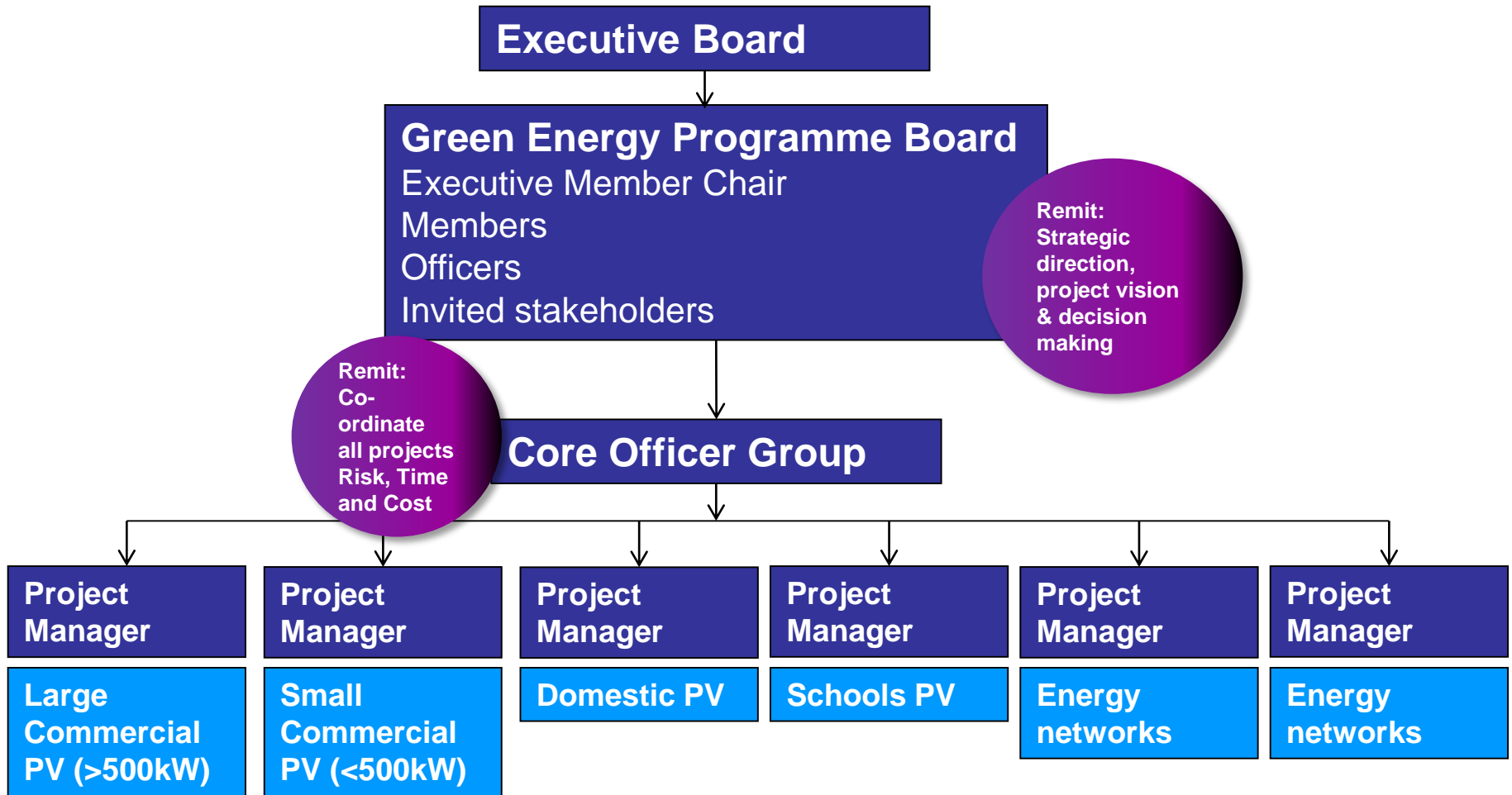
- Affordability – Fuel Poverty
- CO<sub>2</sub> emissions reduction
- Security of supply
- Regeneration
- Revenue generation
- Sustainability



# Approach



# Governance - Internal Delivery





# Progress to Date

---

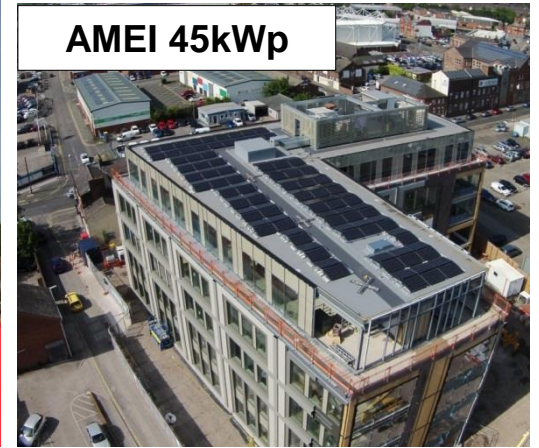
- Solar on 2,500 Properties
- Community Energy
- Commercial Arrays
- Warrington Wolves Stadium
- Solar Investments
- Swindon Solar Farm

# Installed

**Great Sankey Primary 45kWp**



**AMEI 45kWp**



**Walton Lea Crematorium 10kWp**




**Stockton Heath Primary 45kWp**





# Commercial Partner Documents



**Warrington Solar**

**Commercial Solar Photovoltaic Prospectus**

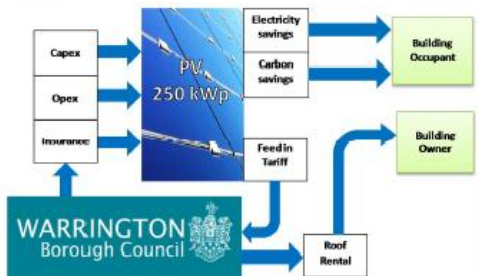
August 2015

WARRINGTON Borough Council

**Overview**

WBC will undertake a feasibility study of your site and provide you with a site specific offer. If it found suitable and legal heads of terms are agreed, we will tender for the array and manage the procurement and installation. We will work with the selected contractor to minimise interference during installation.

WBC will own, operate and maintain the panels. We will enter into a roof rental agreement with the building owner for the space above the roof and an energy supply contract to supply discounted electricity. The rate for electricity will be linked to the price paid for grid electricity on the site, providing a predictable financial benefit to you. Roof rental will increase annually with RPI. Where the building owner will also be the user of electricity produced by the panels would propose a peppercorn rent so that maximum benefit can be provided through electricity discounts and legal agreements can be simplified.



Page 2 of 8

WARRINGTON Borough Council

**Process**

**Initial Feasibility**  
From desk top review, to initial overview of site and early discussions with stakeholders, the high level feasibility will establish whether a scheme is likely to be technically and financially feasible. This will be based on visual inspection of site, projected outputs and simple paybacks.

**Detailed Feasibility**  
A detailed financial model will be put together based on actual or predicted energy use and costs, together with detailed surveys or review of designs if new build. Discussion will take place with commercial partner to agree the model and obtain agreement before progressing to detailed design. During this stage we will require access to site for surveys and either half hourly energy data or predicted energy use.

**Detailed Design**  
The appointed solar contractor will undertake detailed design of the system, carry out DNO application and obtain planning permission, if required, for the site.

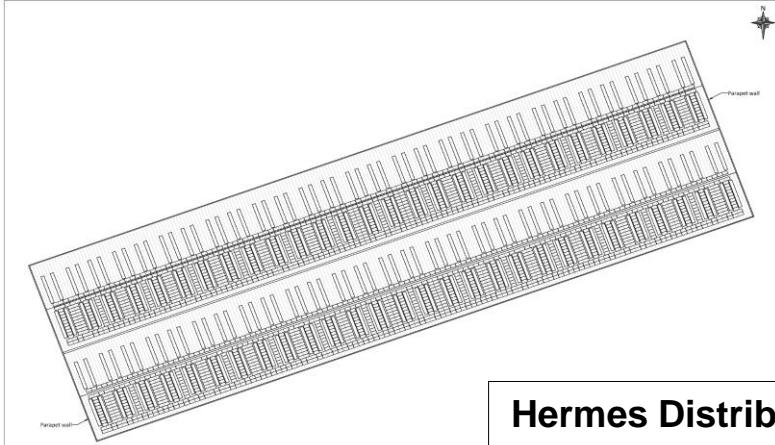
**Installation**  
The system will be installed, commissioned and FIT certified.

**Operation and Monitoring**  
Regular monitoring combined with annual visual checks will make sure the system performs in line with predictions. Reports will be provided to the commercial partner (format and frequency to be agreed) giving details of PV output and carbon emissions avoided.

Page 4 of 8

WARRINGTON Borough Council

# Commercial



**Hermes Distribution Centre 530kWp**

**Plastic Omnium Factory 999kWp**

# Warrington Wolves

---

[https://www.youtube.com/watch?v=Q\\_8m76\\_rFa8](https://www.youtube.com/watch?v=Q_8m76_rFa8)

# Swindon Solar Farm

---

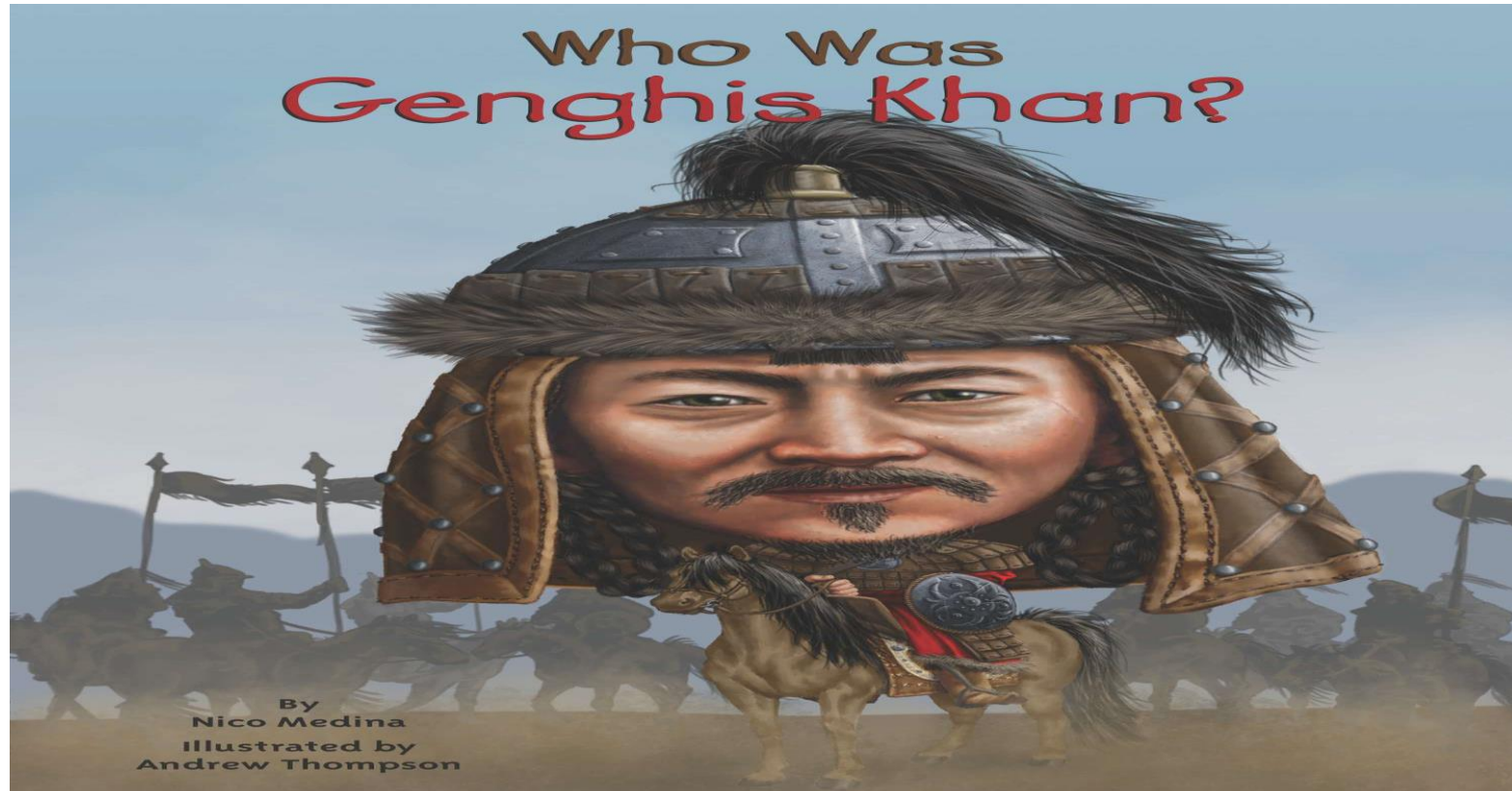
<https://www.youtube.com/watch?v=hfFDQ08yiog>

# Future – Project Enterprise





# Future – Project Genghis



# Q&A

---

## **Danny Mather**

Head of Corporate Finance

T: 01925 44 2344

E: [dzmather@warrington.gov.uk](mailto:dzmather@warrington.gov.uk)