

Sheffield's Trees and Woodlands

**Dave Aspinall, Woodlands Manager
Environment & Culture**

Tel: 2053787

dave.aspinall@sheffield.gov.uk

The view from Meersbrook Park



***“In that pleasant district of merry England which is watered by the river Don, there extended in ancient times a large forest*”**

Sir Walter Scott – IVANHOE

- **Facts and Figures (1)**

10.4% land in Sheffield is Woodland (8.4% in England)

Just under 50% is in Council management

180 woodland sites- which are FSC Accredited

2.2 million trees (approx 4 million in city)

37,000 Highways trees (5000 removed 3000

DDDD's 2000 damaging ,10,000 over the life of the contract)

1550ha (400 conifer in the Peaks 1150 broadleaf)

70 ancient woodland sites

• Facts and Figures (2)

16 LNR's 5 SSSI's

20,000 trees planted/year on average (50,000 in 2015)

6000-8000 tonnes of timber

2 FC Approved design plans

8000 tonnes of CO₂ absorbed

2000 greenspaces containing trees

360,000 trees inspected /1-5 years

30 Friends Groups supported

800-1000 enquiries per year

Trees and Woodlands Team

Woodland Officers

Richard Gill

John Gilpin

Jon Dallow

Countryside Estate

Officer

Tom Collier

Community

Forestry Manager

Tim Shortland

Gus Hunter

Tree Manager

Jerry Gunton

Tree Officers

Jez Platts

Nathan

McWhinnie

Leonie Kapadia

Kean Moxon

John Harrison

Catherine

Nuttgens

Senior Ranger

Simon Dore

Rangers

Tom

Broadhead

Chris Roberts

James

Musgrave

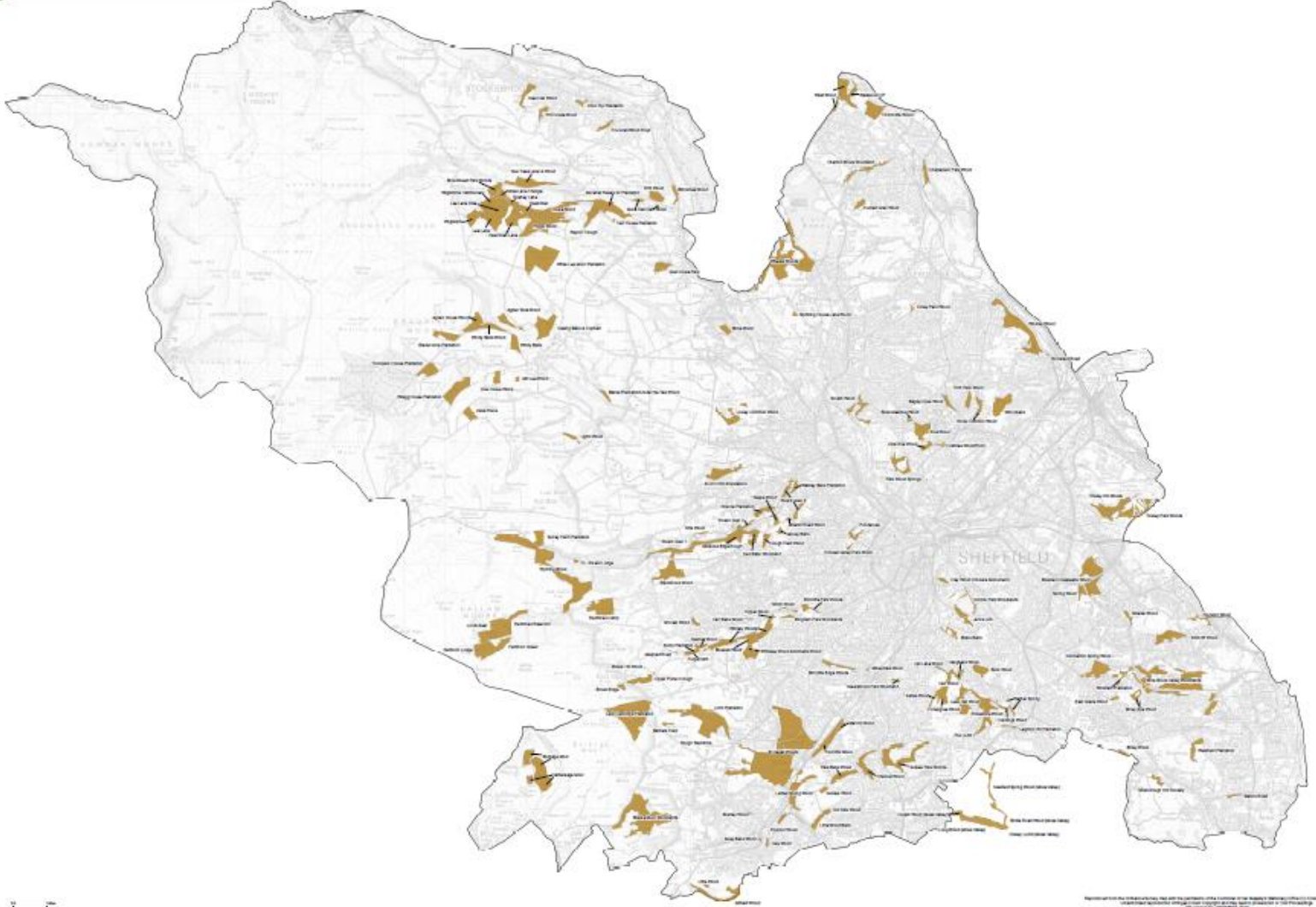
James Smith

Nell Dixon

Claire Robson

Grahame Lister

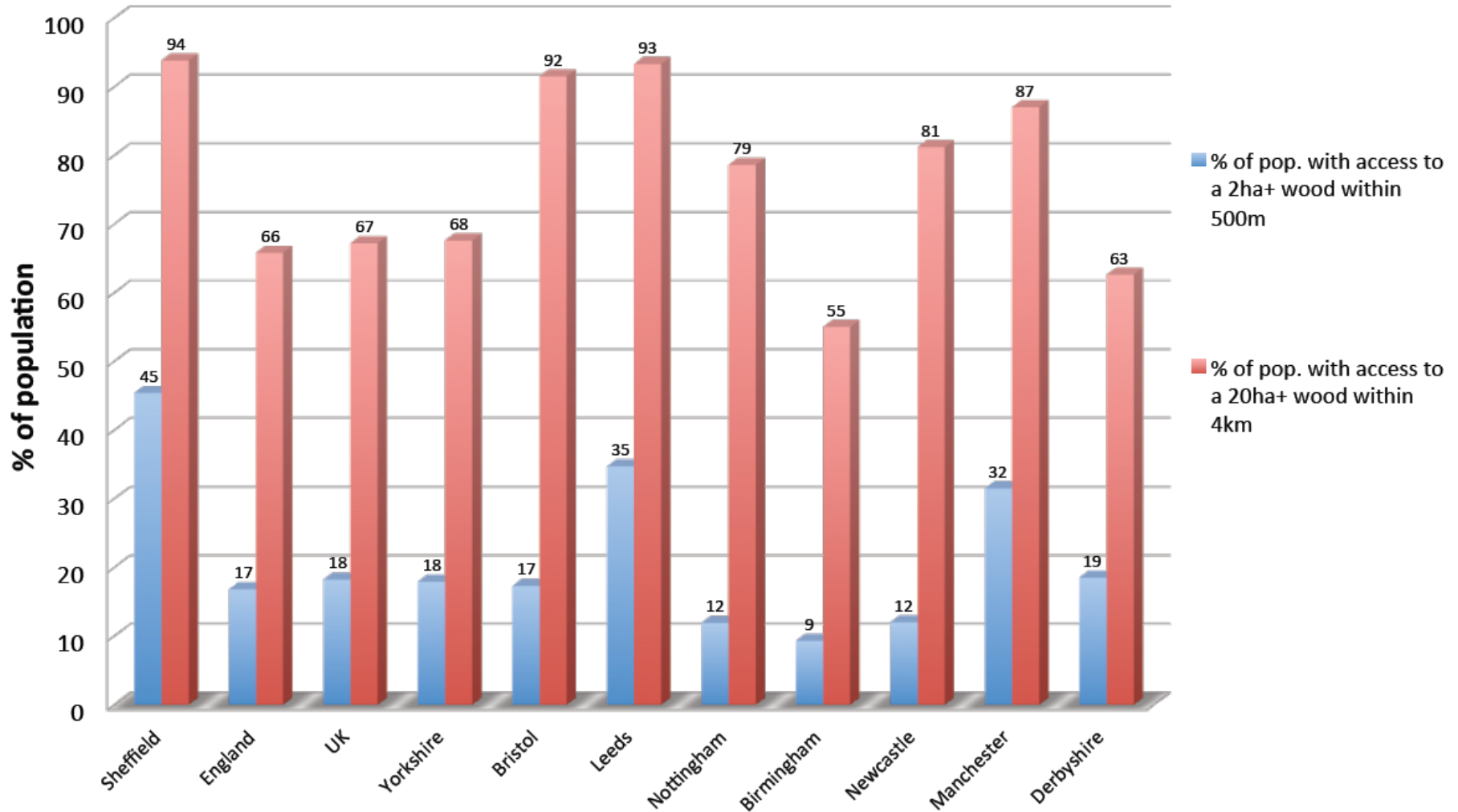
Nick Blood



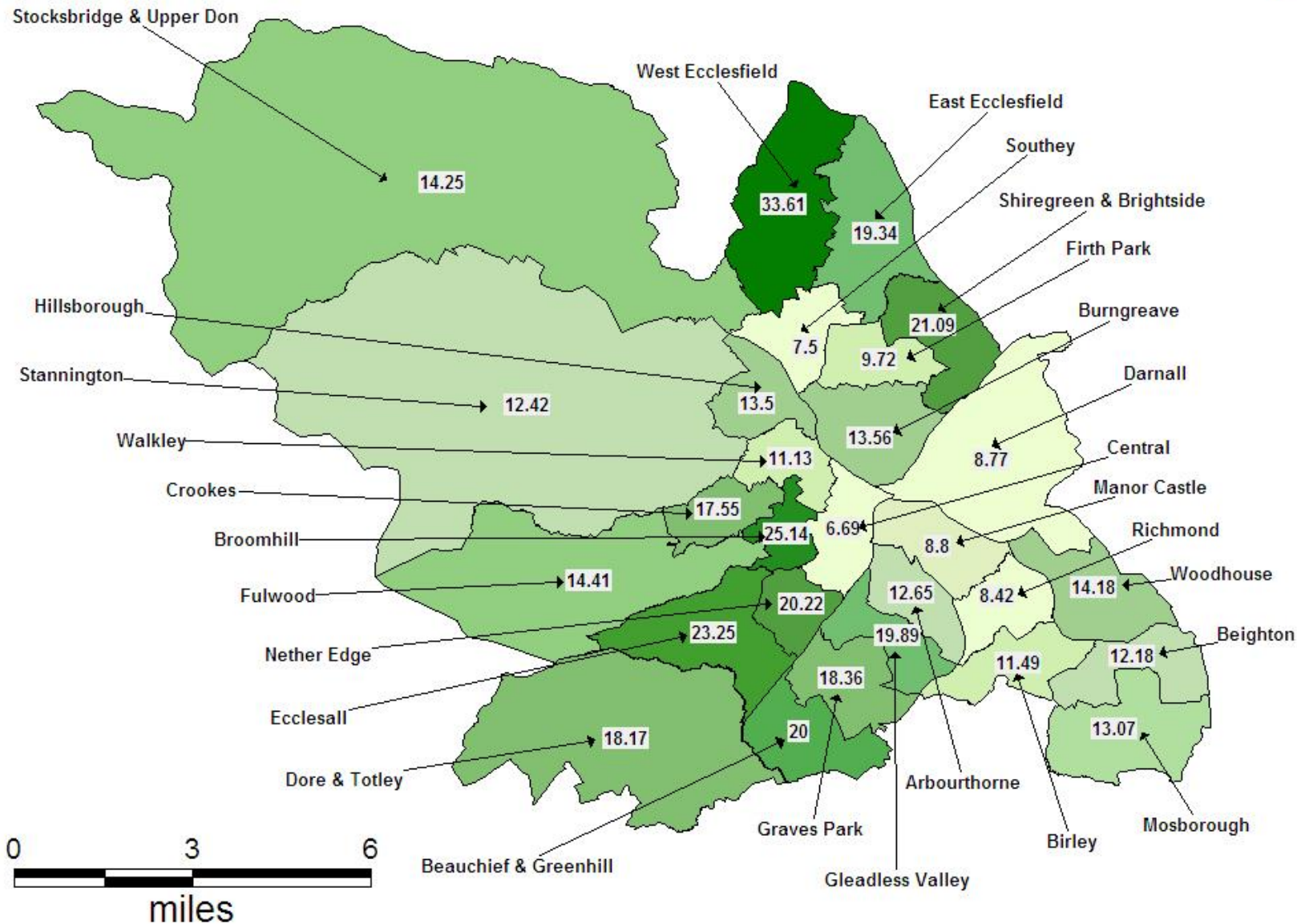
© Sheffield City Council 2015. All rights reserved. This map is for information only and does not constitute a contract. The Council is not liable for any loss or damage arising from its use.

Our resources

Woodland Trust - Access to Woodland
March 2015 Data



Sheffield Tree Survey December 2005



Corporate Plan

Sheffield City Council OUR PLAN 2015-18



Sheffield is a great city and our Corporate Plan focuses on what makes Sheffield a unique, ambitious and inspiring city in 2015 and beyond.

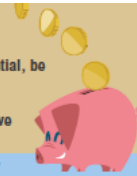
Sheffield is a major European city. We are proud to be the UK's greenest city and we are often considered one of the happiest. We are also striving to be Britain's fairest city.

Local government is changing, but we have bold ambitions. We won't let obstacles stand in the way of delivering our promises or our aspiration: **to be the best we can be – as individuals and communities, as a council and as a city.**

The Corporate Plan sets our direction and priorities. The council exists to serve the people of Sheffield, so we will focus on helping people who live, work, learn and visit our city to enjoy what Sheffield has to offer. But this plan is not just about the council, it is about what we want for Sheffield and its people and what, together with others, we want to achieve over the next three years.

Strong economy

To achieve our economic potential, be well-connected, with skilled individuals and growing businesses, playing a distinctive role in the global economy



Working with others in the City Region we will:

- Attract investment across the city and support businesses to start and to grow, creating 28,000 jobs across the city region
- Attract more visitors to Sheffield, by increasing the city's vibrancy and raising the city's profile
- Maintain and build on our national top ten position for young people in apprenticeships
- Invest millions of pounds to give people the skills they need to get a good job
- Make sure 97.9% of businesses and residents in South Yorkshire can access super-fast broadband
- Develop Don Valley and the M1 corridor as a leading European centre for advanced manufacturing
- Attract individuals and businesses to Sheffield as the UK's top Outdoor City
- Work with businesses to boost exports

Better health and wellbeing

To promote good health, prevent and tackle ill-health by providing early help, earlier in life; particularly for those at risk of illness or dying early



Working with Sheffield's Joint Health and Wellbeing Board we will:

- Help thousands of people achieve a greater level of wellbeing
- Stand by our commitment to keep all children safe
- Work with others to keep adults at risk of abuse and neglect safe
- Help hundreds more children in Sheffield have a great start and be ready for learning and life
- Support children and young people with special educational needs and disabilities to live happy, healthy, fulfilling lives
- Help thousands of people to get early help and access services to remain independent, reducing hospital admissions
- Make sure people can access the care and support they need to live fulfilling lives
- Introduce 'Five Ways to Wellbeing' to help people improve their mental and emotional wellbeing and reduce loneliness and isolation
- Provide direct support to more carers than ever before

An in-touch organisation

To listen and be responsive, so services are designed to meet the increasingly diverse needs of individuals in Sheffield



Working with individuals, communities and our partners we will:

- Make the best use of public money to have the greatest impact for Sheffield
- Continuously respond to the changing needs of our customers
- Make sure we listen, understand and respond to what people are telling us, treating them with respect at all times
- Value our employees who are vital to delivering high quality services for Sheffield
- Make sure our services can change to deliver the best outcomes for Sheffield people
- Provide more of our services online, as we know people want to access services at a time that suits them
- Demand more powers from Government and build on the Devolution Deal, so that Sheffield can better shape its own future

Thriving neighbourhoods and communities

For people to have a good quality of life and feel proud of where they live, with access to great schools and local amenities



Working with others across the city we will:

- Have good or outstanding schools in all our communities to support children, young people and families achieve their full potential
- Better support children at risk of under-achievement to narrow the gap in outcomes
- Create affordable housing, with 750 new council houses and support for developers to build 4,600 new homes across the city
- Sustain high quality parks and green spaces
- Build new leisure centres at High Green and Graves and increase access to facilities, with joint investment in community football pitches
- Keep Sheffield's streets and open spaces clean and tidy
- Complete the resurfacing of 1,180 miles of road, as part of our Streets Ahead programme
- Work with communities to improve community safety

Tackling inequalities

To make it easier to overcome obstacles by investing in the most deprived communities and supporting individuals to help themselves and achieve their full potential



Working with others we will:

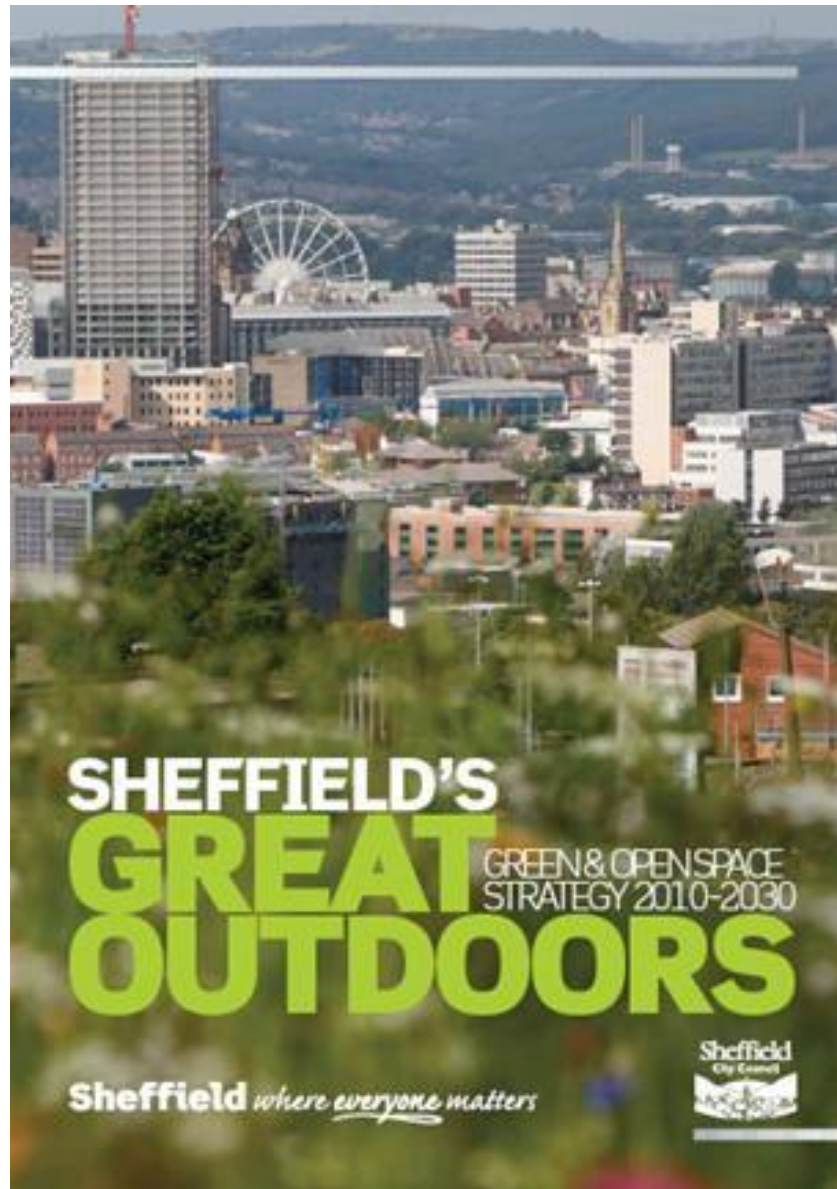
- Work towards Sheffield being a Living Wage city, promoting the benefits to employers, including our contractors and persuading the city's public sector organisations to sign up by 2018
- Work with communities to strengthen our approach to cohesion and tackling stigmatisation
- Support Sheffield Money to provide 5,000 local people with affordable loans
- Support up to 2,000 teenagers and young adults to access education, employment and training
- Help those who face obstacles to find lasting work, including young people, disabled people and those with mental health conditions
- Proactively work with others to deliver our Tackling Poverty Strategy and break the link between being poor as a child and growing up to live in poverty as an adult

For more info:

The full Corporate Plan is available on our website:

www.sheffield.gov.uk/corporateplan

Context Setting



People

- Health and Wellbeing
- People's use of the trees and woodland resource
 - Access/ Accessibility
- Community Engagement
- Education
- Interpretation and Site Signage
- Communication and Consultation

Place

- Management of individual trees in parks, woodlands and open spaces
- Tree Planting
- Woodland Management
- Highway Trees
- Trees on Private Land - Trees and Planning
 - Local Character
 - Economic Value

Environmental Sustainability

- Eco-system services & Climate Change
- Biodiversity/Biosecurity

Quality Standards & Resources

- Standards for T&W Management Contractors
- Partnership Working
- Funding & Budgets
- Staff, skills and leadership

People

Health and Wellbeing



Art and Culture



Art and Culture



Community Engagement



Volunteers and FOG's

People's use of the trees and woodland resource- Outdoor economy, health walks, run routes, BMX tracks etc



Access/Accessibility





Education



Woodland Discovery Centre, Ecclesall Woods





Craft courses, craft businesses,
firewood sales.





Public Footpath

Ecclesall Woods
City Heritage Woodland

Parks, Woodlands & Countryside Service
Tel: 0114 250 0500

Ecclesall
Heritage
Trust

Interpretation



Walkley Bank Plantation





Tree Inspection & Risk Management



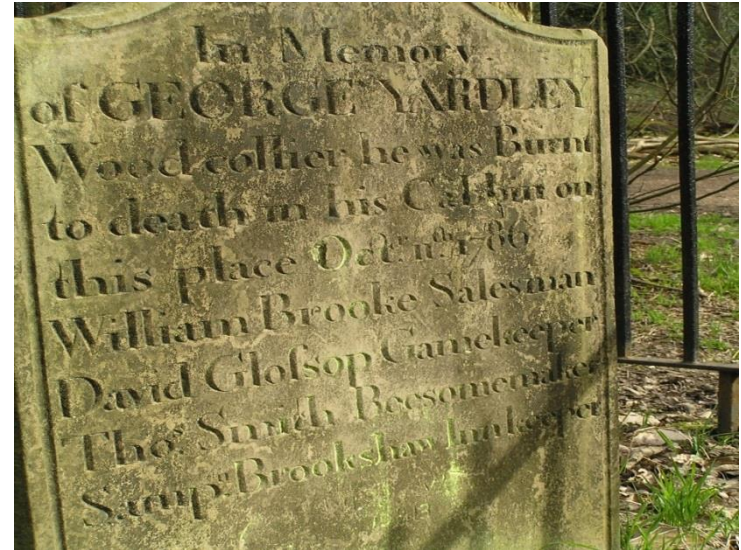
Community Forestry Tree Planting



In the last 5 years 95,000 trees have been planted in our parks, open spaces, schools etc, many of which involving the community



Historical and Archaeological





Economic value



Burbage before 2014



Over 40 years ago, 35Ha of Scots Pine, Lodgepole pine and Larch were planted as a commercial crop to be harvested.





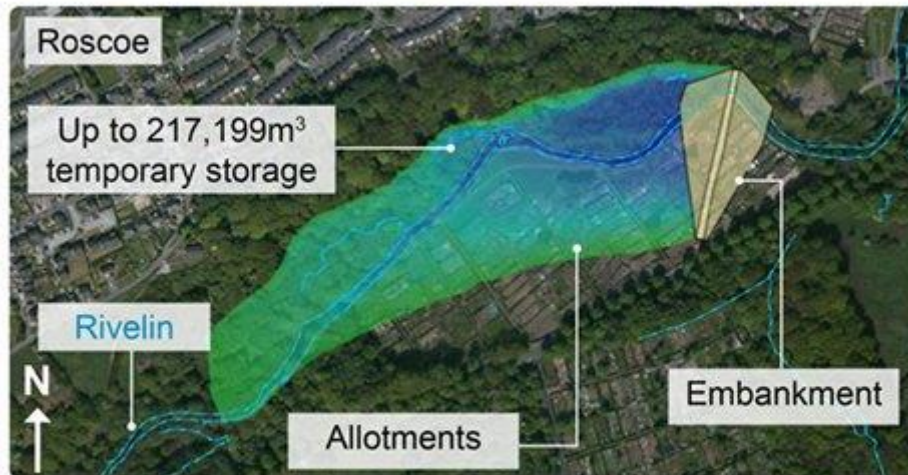
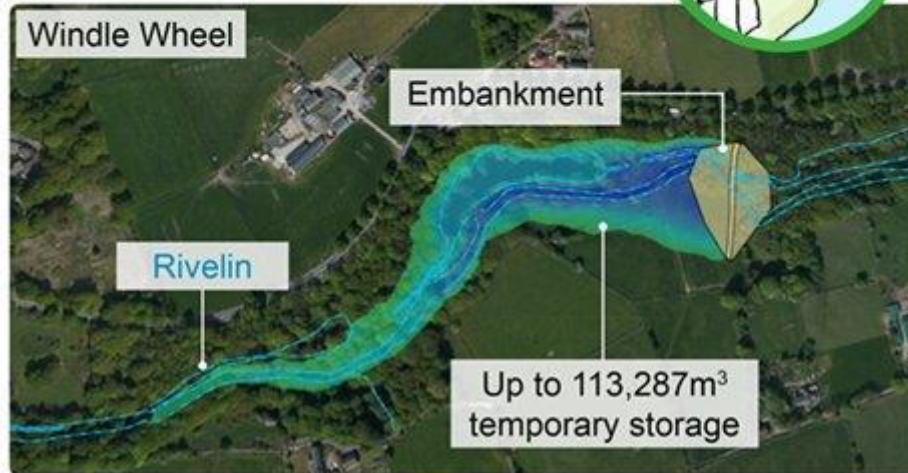


Environmental Sustainability



Eco-system services and Climate change





Plans showing potential location of the embankments and extent of temporary flood storage areas created.

Biodiversity



Urban Nature Parks.....

From this



To this...?

Or this....?





Pests & Disease



Biosecurity





Quality Standards



Future funding and budgets despite austerity!

Sheffield Lakeland

Section 106

Local fundraising

Crowd Funding

Income generation



Dave Aspinall, Woodlands Manager,

Environment & Culture

Tel: 2500500

dave.aspinall@sheffield.gov.uk