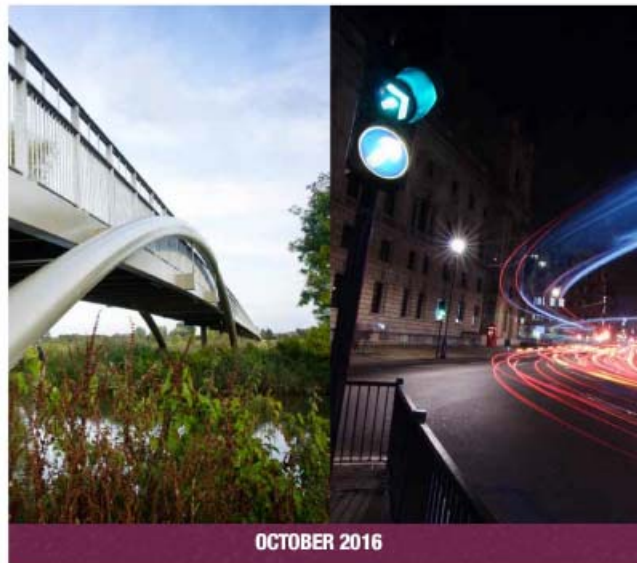
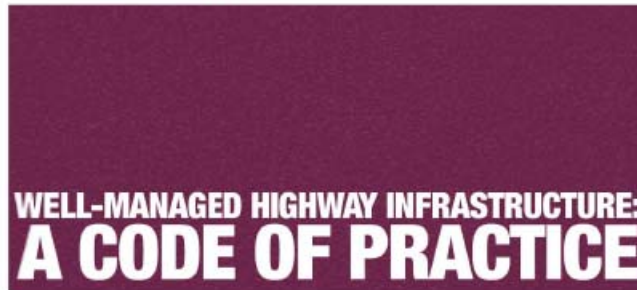


Well-Managed Highway Infrastructure at Derby

UK ROADS LIAISON GROUP



- It'll never work
- Claims will go up
- Why is Derby going it alone
- We don't have to do this
- I already risk assess everything
- Inspectors already put their neck on the line every day



Derby City Council



**I'm not bossy!
I have skills...leadership skills!!
Understand?**



Derby City Council



CHANGE MANAGEMENT RESISTANCE

YOU ARE PART OF THE REBEL ALLIANCE



Derby City Council





“As co-author of WMH Liability Risk, I was invited by Kully Boden in 2017 to visit Derby and meet with the Highway Inspectors.. I have been impressed by how proactive Derby have been to implement their new policy in line with the new code and their strong commitment to do things right. I have been equally impressed by the fact that Derby have not operated in a silo and are now inspecting and repairing assets on behalf of their housing authority, in line with the code of practice. They are a model of best practice in this area. A good clear strategy has obviously served Derby well. Well done!”

Steven Conway, Solicitor, Keystone Law



Derby City Council



“Derby City engaged IHE in the development of their Inspection Policy in 2018. We were able to hear what the Inspector’s thoughts and understandable concerns were on moving to a risk based approach. This grass roots approach has a laid solid foundation for the authority and enabled a smooth transition to a new way of working. Well done to David and Kully also for completing the Diploma in Highway Asset Management in 2018.....the only two recipients in the country so far!”

Institute of Highways and Engineering



Derby City Council



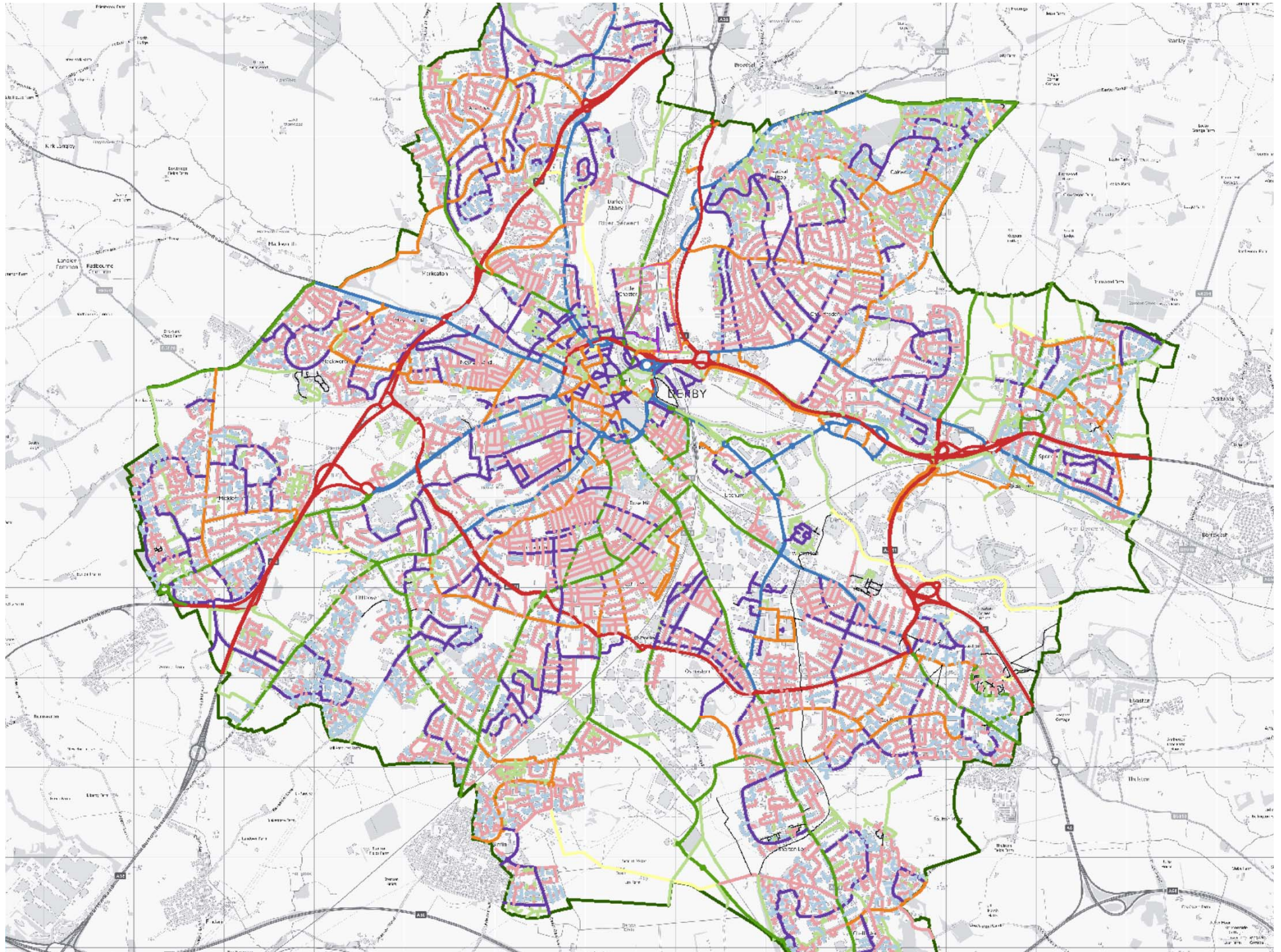
“A lawyer’s perspective: I have worked with Derby since 1999 and have always viewed them as ahead of the game. The new Code of Practice was an important challenge, but yet again, they rose to it. We have solid new systems and justifiable processes, approved at an executive level. These will make for safe highways, and really defensible cases. I look forward to proving this over coming years. Derby should be proud and other authorities can learn from their ingenuity”

Henry Bermingham, Partner at Weightmans



Derby City Council





Footway and Footpath Hierarchy Determination Process

It was appropriate to give consideration to the presence of other significant local amenities:

- **Arena/Stadium**
- **Care/Nursing Home**
- **Children's Nursery/Crèche**
- **College**
- **Hospital/Hospice**
- **Other Educational Establishment**
- **Preparatory/First/Primary/Infant/Junior/Middle School**
- **Public/Village Hall/Other Community Facility**
- **Secondary/High School**
- **Special Needs Establishment**
- **Station/Interchange/Terminal/Halt**
- **University**
- **Place of Worship**



Derby City Council

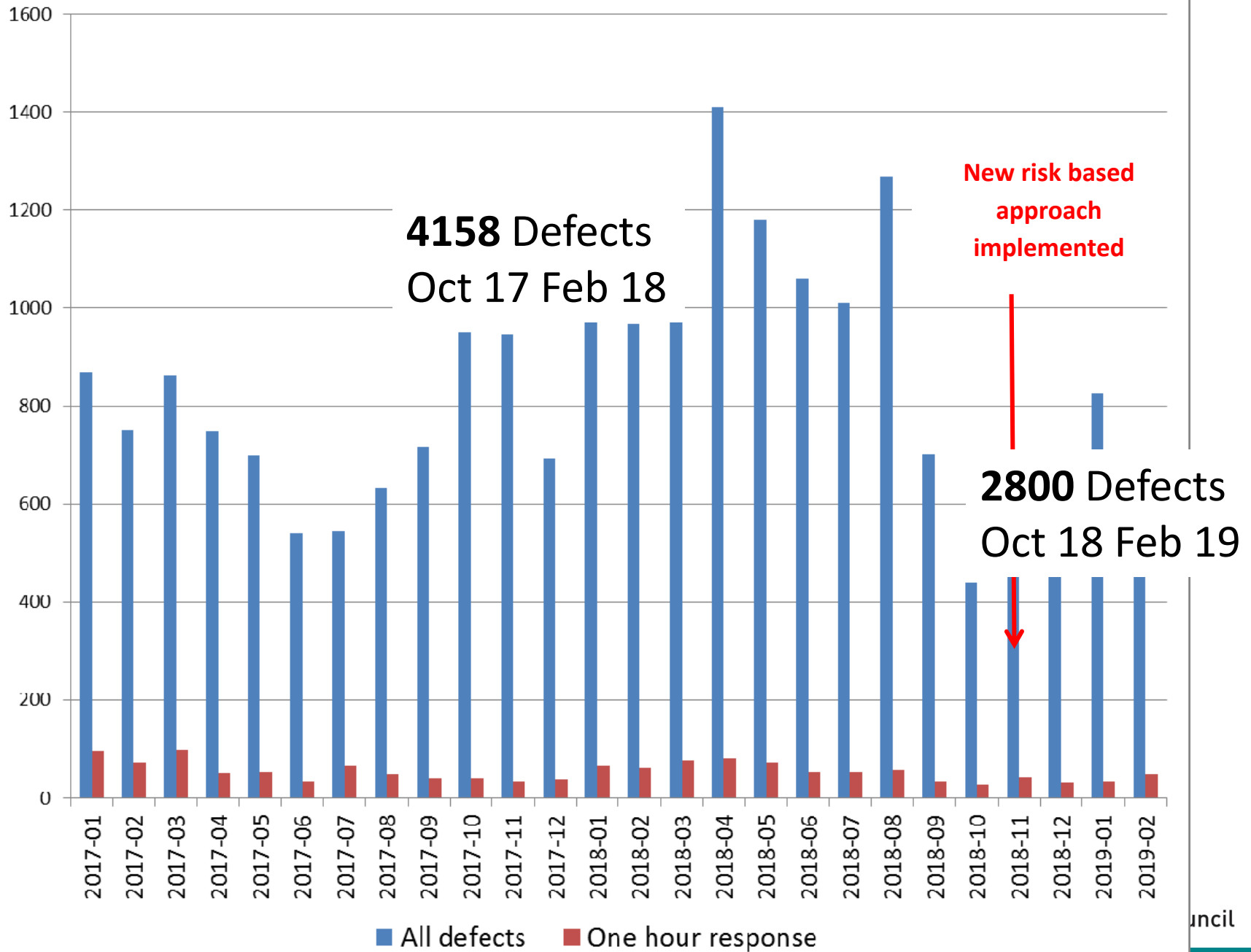




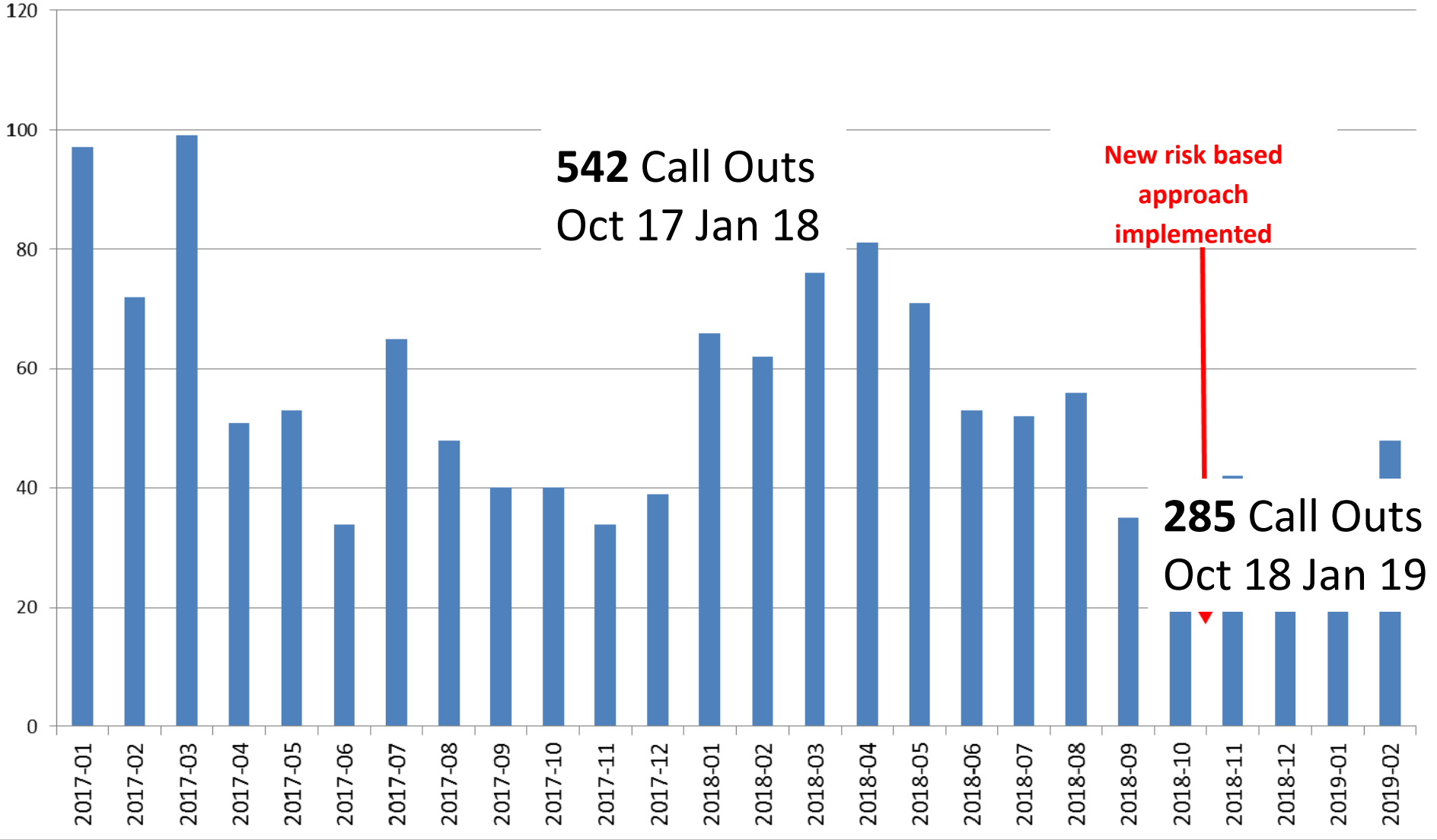
DESCRIPTION		PROBABILITY / LIKELIHOOD					
		NEGLIGIBLE	LOW	MEDIUM	HIGH	VERY HIGH	
CONSEQUENCE / IMPACT	NEGLIGIBLE	<ul style="list-style-type: none"> Little or no inconvenience to highway user 	Record Inspection completed in CONFIRM	Record Inspection completed in CONFIRM	Record Inspection completed in CONFIRM	Record within CONFIRM	Record within CONFIRM
	LOW	<ul style="list-style-type: none"> Potential to create minor vehicle damage Potential to create minor inconvenience to highway user 	Record Inspection completed in CONFIRM	Record within CONFIRM	Record within CONFIRM	28 Days	14 Days
	MEDIUM	<ul style="list-style-type: none"> Potential to create vehicle damage Potential for a slight injury to one or more persons Potential to create moderate disruption of highway network 	Record Inspection completed in CONFIRM	Record within CONFIRM	28 Days	14 Days	36 Hrs
	HIGH	<ul style="list-style-type: none"> Potential to be a serious injury to one or more persons Potential to create major disruption of highway network 	Record within CONFIRM	28 Days	14 Days	36 Hrs	36 Hrs
	SEVERE	<ul style="list-style-type: none"> Potential to be serious injury to one or more persons Potential to create serious disruption of highway network 	Record within CONFIRM	14 Days	36 Hrs	36 Hrs	1 Hr



Highway Defects by Month



1 Hour response by Month



Highway Infrastructure Asset Management Policy

September 2018



Purpose of this policy:

As a Highway Authority, we have a duty of care to maintain the safety and accessibility of highway infrastructure that is kept at public expense. As stewards and custodians of the highway infrastructure assets, in accordance with the Highways Act 1980, we must demonstrate that we have provided adequate provision for their upkeep and safety as can be reasonably expected. We shall maintain the highway infrastructure assets with consideration to whole life costs, associated risks and alignment with our corporate objectives. This policy defines the planned course of action for all highway asset owners

Artificial Intelligence and Computer Vision



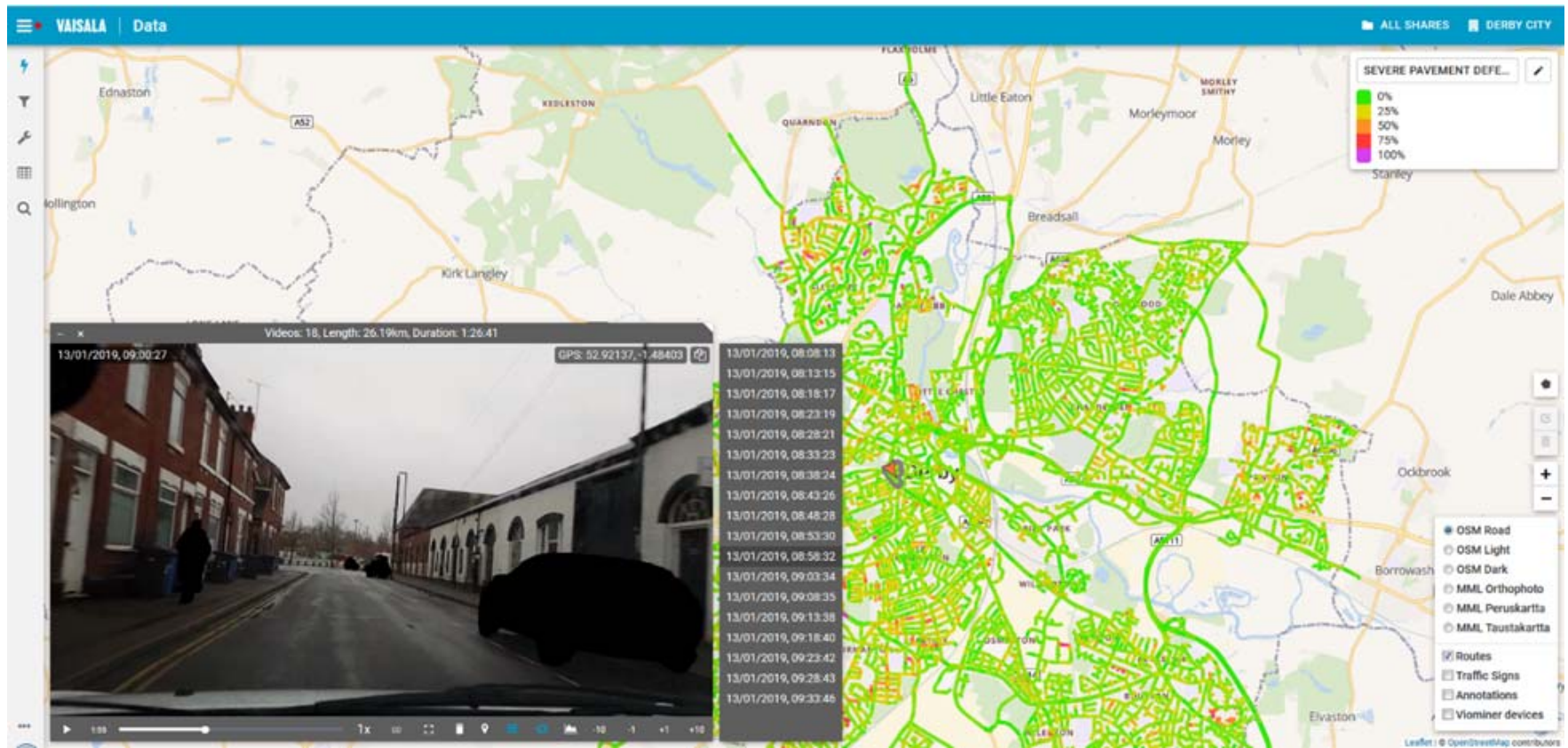
Derby City Council





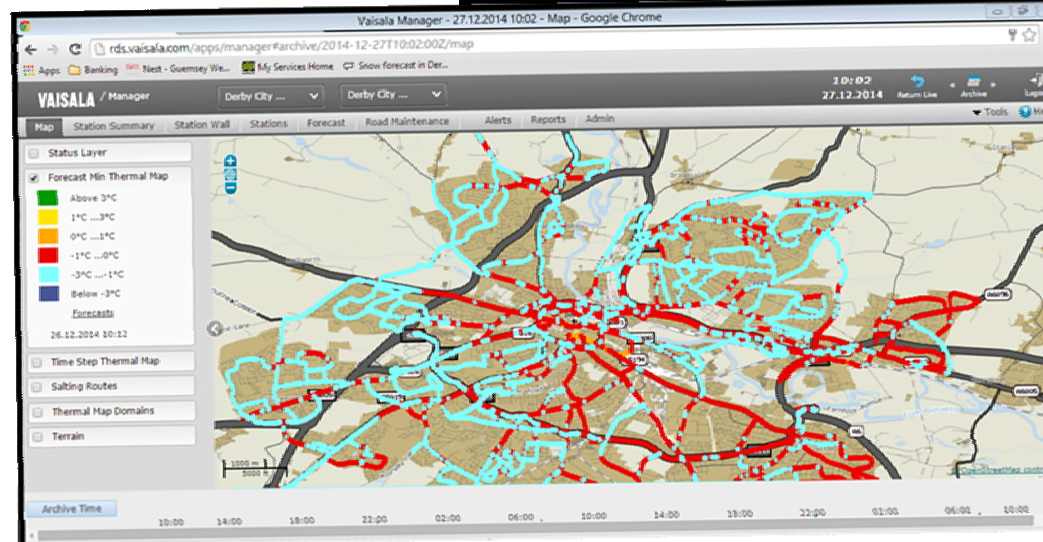
Derby City Council





Derby City Council





Derby City Council



Derby City Council



Further Challenges:

- Inspectors don't get into the old habits of individual betterment,
- Inspectors using the wrong defect types to circumvent the system to arrange faster repairs
- Operations meeting target dates for all repairs
- How our approach is going to manifest itself in a courtroom situation
- improving the flow of communication to the customer can always be improved
- Delivering on other recommendations of Code of Practice
- Maintaining our Band 3
- Developing more innovative ways to repair potholes
- Developing competencies of other asset holders and their teams
- educating the wider audience – (i.e. network management, engineering design, highways development control, regeneration - don't just build things and walk away – think about the materials you are using.
- How will we be able to benchmark our risk based approach with neighbouring authorities?



Thank you for listening

David Kinsey

david.kinsey@derby.gov.uk

Kully Boden

kully.boden@derby.gov.uk



Derby City Council

