

Janet Viney

HM Inspector of Health and Safety

Health & Safety Executive

Waste and Recycling Sector

Key health and safety issues for local authorities

-

Waste and Recycling Grounds and Parks



Summary



Health and safety myths - v – reality

A new strategy for health and safety – HGBWW

Work of WISH - current issues in waste & recycling

Grounds and Parks – current issues

Managing risks well

- identify the real risks – *both safety and health*
- keep things as simple and straightforward as possible
- *proportionate* management of the risks

Health and Safety Headlines



Myths

Freestyle lane tumble turns banned from Council run swimming pool for health and safety reasons

You can't pick up your footstool because of health and safety. You need to pay £30 for delivery....

No frilly socks to be worn in school, in case you trip

No you can't have strawberry sauce it may drip on the floor and cause a slip hazard

Myth buster

Council bans Refuse collection workers from wearing Christmas hats

Issue

Refuse collection workers have been banned from wearing Christmas hats or anything Christmassy on the grounds of health and safety. The council have stated drivers and other road users could be distracted.

Panel opinion

There is no health and safety legislation that prevents refuse collectors wearing Santa hats or entering the festive spirit with other modest decorations. Excessive displays which might impede the driver's vision or cause a distraction are another matter, but that doesn't seem to be the case here. Being sensible about health and safety can still allow everyone to have some fun too!

Headlines

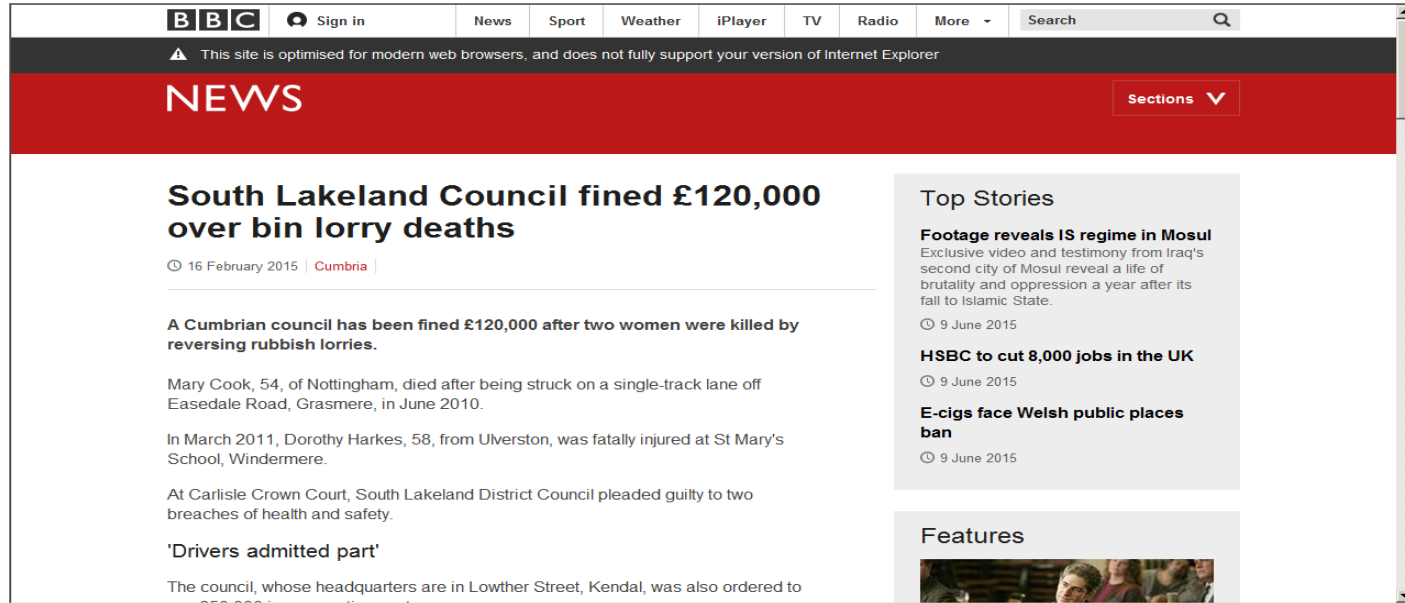


A screenshot of the Manchester Evening News website. The top navigation bar includes links for 'JOBS', 'MOTORS', 'PROPERTY', 'DIRECTORY', 'FAMILY NOTICES', 'BUYSELL', 'DATING', 'BOOK AN AD', and 'PUBLIC NOTICES'. The main header features the 'Manchester Evening News' logo, a search bar, and social media icons. A prominent headline reads: 'Manchester City Council fined after failing to provide proper training for a cleaner who nearly died while litter picking'. Below the headline, there is a sub-header: 'Council cleaner Paul Rose suffered horrific injuries after a car driving at more than double the speed limit threw him '20ft into the air' while he was out litter picking near the Mancunian Way'. The article is categorized under 'News' and 'Greater Manchester News'.

Council cleaner Paul Rose suffered horrific injuries after a car driving at more than double the speed limit threw him '20ft into the air' while he was out litter picking near the Mancunian Way

FINE £15,000

Headlines

A screenshot of a BBC News website article. The page has a red header with the word 'NEWS' in white. The main article is titled 'South Lakeland Council fined £120,000 over bin lorry deaths' and is dated 16 February 2015. The article text describes the fine and mentions two women killed by reversing rubbish lorries. To the right, there is a 'Top Stories' section with three items: 'Footage reveals IS regime in Mosul', 'HSBC to cut 8,000 jobs in the UK', and 'E-cigs face Welsh public places ban'. Below that is a 'Features' section with a small image of a group of people.

BBC Sign in News Sport Weather iPlayer TV Radio More Search

This site is optimised for modern web browsers, and does not fully support your version of Internet Explorer

NEWS

 Sections

South Lakeland Council fined £120,000 over bin lorry deaths

16 February 2015 | Cumbria

A Cumbrian council has been fined £120,000 after two women were killed by reversing rubbish lorries.

Mary Cook, 54, of Nottingham, died after being struck on a single-track lane off Easedale Road, Grasmere, in June 2010.

In March 2011, Dorothy Harkes, 58, from Ulverston, was fatally injured at St Mary's School, Windermere.

At Carlisle Crown Court, South Lakeland District Council pleaded guilty to two breaches of health and safety.

'Drivers admitted part'

The council, whose headquarters are in Lowther Street, Kendal, was also ordered to


Top Stories

Footage reveals IS regime in Mosul
Exclusive video and testimony from Iraq's second city of Mosul reveal a life of brutality and oppression a year after its fall to Islamic State.
9 June 2015

HSBC to cut 8,000 jobs in the UK
9 June 2015

E-cigs face Welsh public places ban
9 June 2015

Features



Two women were killed by reversing rubbish trucks within a year of each other.

HSE investigation found the local authority had failed to tackle the risks from reversing vehicles.

FINE £120,000

Sevenoaks District Council fined £40,000 over fatal crash between motorcyclist and road sweeper on A20 in Swanley

A council has been fined £40,000 over the death of a motorcyclist from Swanley who died after he collided with a street cleaner.

Sevenoaks District Council will also have to pay £32,000 in costs following the Health and Safety prosecution.

FINE £40000

Headlines



- Council in court after death of pensioner
- Driver in bin lorry tragedy 'was not trained'
- Council fatally omitted agency worker from driver training

A screenshot of a news article from the MRW website. The article is titled "Council fined over refuse vehicle's fatal collision" and is dated 14 April 2014. The author is Tom Kenning. The article text states that Glasgow City Council has been fined £20,000 after a pensioner was struck by a reversing waste collection vehicle in the city centre. It mentions that Malcolm McCulloch, 71, a retired dock worker from Glasgow, was walking across Holm Street, Glasgow, when he was struck by the reversing lorry on 10 August 2012. The Health and Safety Executive (HSE) investigated the incident and prosecuted the council for serious safety failings. The article also mentions that Glasgow Sheriff Court heard that the council, which carries out its own commercial glass collections, had introduced a program of reversing assistant training between March and December 2011. A reversing assistant's role is to stand outside the vehicle and guide the driver in situations where reversing manoeuvres cannot be avoided. The screenshot also shows the MRW logo, a navigation menu with categories like Home, News, Retail, Construction, Health, Materials, Plant & Equipment, and Directories, and a sub-menu with categories like MRF News, Food waste, Landfill Tax, Circular Economy, Kit, and Markets. There is also a "Related Articles" section on the right side of the article, listing "Road safety: how to give drivers a better view of bikes" and "Council fined for waste vehicle reversing deaths".

Headlines



- Two companies were fined a total of £815,000 after a worker and father-to-be was crushed to death in Lancashire by a refuse collection vehicle.
- Veolia ES Sheffield Limited (Veolia) and John Fowler and Son (Blacksmiths and Welders) Limited (JFS) both pleaded guilty and were sentenced at Preston Crown Court, after an investigation by the Health and Safety Executive (HSE).

Why is the waste and recycling industry a priority for HSE?

Fatals

- An average of **7 people** are killed each year in this sector. (**10 times** the average rate for all industries. **4 times** construction rate)
- **Main causes**
 - being struck by moving vehicles
 - contact with moving machinery
 - being trapped by something collapsing.

Non fatal injuries

- Around **5000 workers** suffer non-fatal workplaces injuries (**Twice** the average all industry rate).
- **Main causes**
 - Lifting and handling
 - slips & trips
 - being struck by objects and falls from height.

Ill health

- **6000 workers** suffer an illness they believe to be work-related. **Main causes** include: musculoskeletal disorders, respiratory and skin disease.

A new strategy for health and safety



Helping
Great Britain
work well

Six key strategy themes



Acting together

Promoting broader ownership of health and safety in Great Britain



Supporting small employers

Giving SMEs simple advice so they know what they have to do



Tackling ill health

Highlighting and tackling the costs of work-related ill health



Keeping pace with change

Anticipating and tackling new health and safety challenges



Managing risk well

Simplifying risk management and helping business to grow



Sharing our success

Promoting the benefits of Great Britain's world-class health and safety system

Acting Together

Biffa campaign

DROPS - Driving Recklessly on Pavements

- Working with LAs, Police, Residents, HSE
- 360' cameras
- Re-assessing routes (schools, rush hour)
- Reporting systems - police action

Acting Together



Waste Industry Safety and Health Forum.

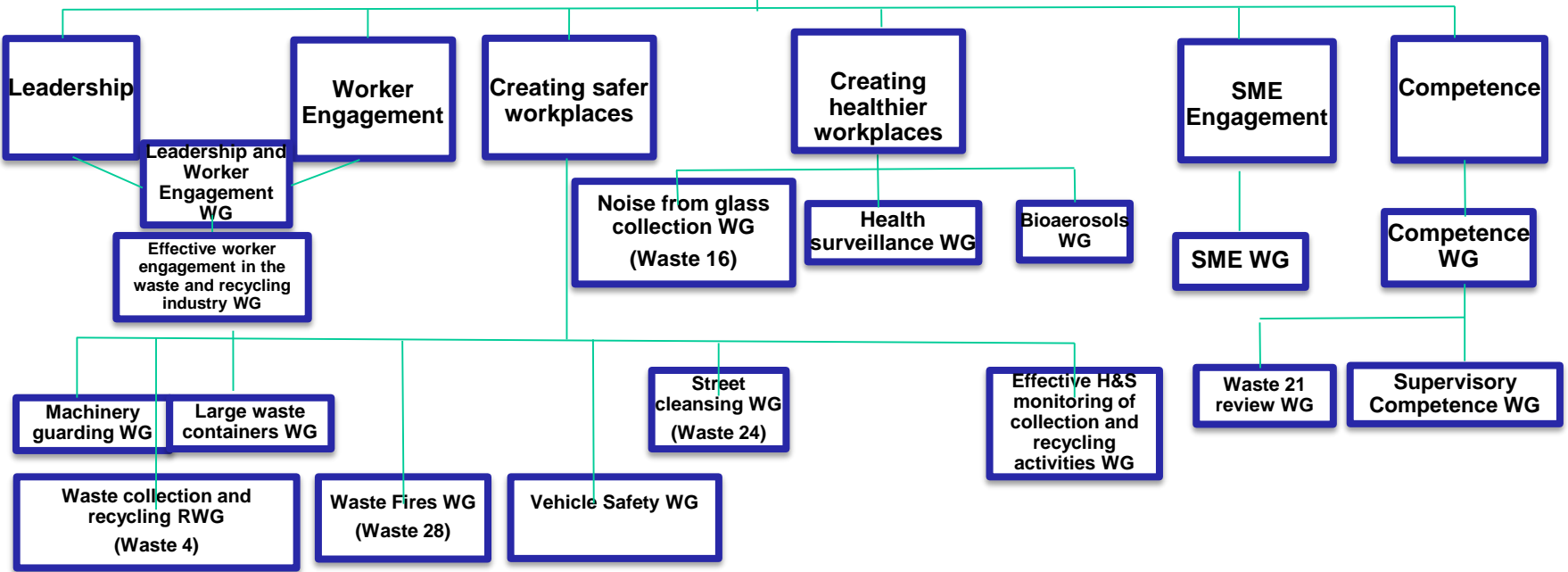
WISH members include representatives from:

- HSE
- main trade associations
- professional bodies
- trade unions
- recycling organisations
- national and local government bodies.

The logo for the Waste Industry Safety and Health Forum (WISH) consists of the word 'WISH' in white, bold, sans-serif capital letters, centered on a solid green rectangular background.

WISH

WISH Steering Group





- WISH [Waste 03](#) Orphaned gas cylinders in the waste and recycling industries
- WISH [Waste 04](#) Waste and recycling vehicles in street collection
- WISH [Waste 05](#) - The safe use of refuse collection vehicle hoists and bins
- WISH [Waste 06](#) - Skip and container safety in waste management and recycling
- WISH [Waste 08](#) - Compaction equipment: Managing user and public safety
- WISH [Waste 09](#) - Safe transport in the waste and recycling industry
- WISH [Waste 10](#) - Recovery of petrol from end-of-life vehicles
- WISH [Waste 11](#) - Safety at 'bring-sites' in the waste management and recycling industry
- WISH [Waste 13](#) - Designing and operating material recovery facilities (MRFs) safely
- WISH [Waste 16](#) - Reducing noise risks from "kerbside" glass collection
- WISH [Waste 18](#) - Hand sorting of recyclables ("totting") with vehicle assistance
- WISH [Waste 21](#) - Health and safety training in waste management and recycling
- WISH [Waste 22](#) - Managing offensive/hygiene waste safely
- WISH [Waste 23](#) - Safe waste and recycling collection services
- WISH [Waste 24](#) - Safe cleansing on the highway - Managing the risks associated with manual and mechanical cleansing
- WISH [Waste 25](#) - Managing access to large waste and recycling bins
- WISH [Waste 26](#) - Managing health and safety in civic amenity sites
- WISH [Waste 27](#) - Health and hazardous substances in waste and recycling
- WISH [Waste 28](#) - Reducing fire risk at waste management sites

<http://wish.ciwm.co.uk/>

HSE Inspections

- **HSE Inspection of LA waste and recycling services**
 - ongoing initiative to evaluate and assess the role of local authorities (LAs) when:
 - procuring and managing municipal waste and recycling contracts; and/or
 - delivering and managing in-house waste and recycling services.

Areas to focus on in household collections



The most commonly identified areas for improvement by inspectors were:

- Monitoring - new guidance
- Client and contractor monitoring the effectiveness of supervision
- Route risk assessment
- Elimination/reduction of reversing on routes

How LAs responded to this

Following HSE presentation at LAWS

- LA Working Group set up to draft guidance on monitoring
- WISH Working Group – LAWS, ESA, HSE
- Guidance produced in 18 months

Monitoring H&S collection activities



- What to monitor and how to record it – checklists.
- How to ensure all drivers and crews are covered by monitoring – matrix
- Who should do it
- What training they will need
- How should they monitor
- How to inform crews about monitoring
- How often
- How to deal with non-compliance
- How to report

Waste and recycling collection activities - Monitoring checklist (page 1)

Time		Date		Route		Domestic	Recycling	Garden
Driver		AG/FT	Signature	Vehicle Registration				
Loader		AG/FT	Signature	Location				
Loader		AG/FT	Signature	Monitoring Officer				
Driver & Vehicle Safety				Yes	No	Comments		
1. Daily check sheet (paper or electronic)/drivers log book								
2. All documents correct								
3. Lights, beacons, reversing alarm/camera/lights								
4. Vehicle stationary when loaded								
5. Vehicle being loaded going forward								
6. Loaders seated and belted before driving off								
7. Mobile phone and radio used correctly								
8. Vehicle equipment checked								
Route Risk Assessment (RRA)								
9. RRA available and relevant								
10. Safe double sided collection								
Operative Safety				Yes	No	Comments		
11. Safe operation of hopper and bin lift								
12. Road safety, footpaths, no running etc.								
13. Manual handling technique								
<ul style="list-style-type: none"> Assessing bin/load Moving bin/load Lifting & lowering 								
14. PPE worn correctly, suitable and undamaged								
15. Safe vehicle access and egress								
16. Seatbelts worn correctly								
17. No phones or headphones worn when collecting								
18. Customer care								
19. Infection control measures								
Reversing				Yes	No	Comments		
20. Driver reversing safely								
21. Reversing assistants using safe methods								
22. No loading when reversing								
Public Safety				Yes	No	Comments		
23. Crew monitoring hopper and bin lifts								
24. Spills cleaned up								
25. Bins returned to collection point								
26. Brush and shovel attached to vehicle								

Additional Points

Corrective Actions (who by and when)

Waste and recycling collection activities - Monitoring checklist (page 2)

Driver & Vehicle Safety	Standard Required
1. Daily check sheet and drivers log book	Driver must complete both daily check sheet and drivers log book before leaving depot
2. All documents correct	Ensure driver has correct assisted pull information, route maps, risk assessments and bin labels
3. Lights beacons and reversing alarm/camera/lights	Ensure all lights, beacons and alarms working correctly
4. Vehicle stationary when being loaded	Vehicle must come to a complete stop before any bins are loaded
5. Vehicle being loaded going forward	Bins should only be loaded as vehicle driving forward
6. Loaders seated and belted before driving	Driver must allow loaders to be seated with seatbelts worn before moving off
7. Mobile phone used correctly	No illegal use of mobile phone or radios being used not hands free
8. Vehicle equipment checked	Equipment checked to include vehicle mobile phone, first aid kit, fire extinguisher, spill kit and incident pack
Route Risk Assessment (RRA)	Standard Required
9. RRA available and relevant	Collection round carried out in accordance with RRA and RRA still relevant
10. Safe double sided collection	Loaders to collect both sides only when identified by RRA. Ensure safe road crossing.
Operative Safety	Standard Required
11. Safe operation of hopper and bin lift	Barrier arms extended, loader standing clear during bin emptying cycle, no grabbing bin before end of cycle
12. Road safety, footpaths, no running etc.	Roads crossed safely, footpaths used, no running, no following lorry in road
13. Manual handling technique <ul style="list-style-type: none"> • Assessing bin/load • Moving bin/load • Lifting & lowering 	Manual handling techniques follow training provided. Bins checked for weight before moving, loads lifted inside base, no twisting, no running with bins, push pull follows dip and drive principal.
14. PPE worn, suitable undamaged	High viz, gloves safety footwear worn, good condition, not damaged. Wet weather clothing available.
15. Vehicle access and egress	3 points of contact, no jumping, on nearside if possible
16. Seatbelts worn correctly	Seatbelts worn by all crew when travelling
17. No phones or headphones worn	Crew not wearing headphones or using mobile phones when loading
18. Customer care	Crew polite and helpful with public
19. Infection control measures	Hand washing or cleansing available to staff
Reversing	Standard Required
20. Driver reversing safely	Reversing at slow speed, use of all available equipment, mirrors, reversing assistant, camera, lights and alarm
21. Reversing assistants using safe methods	Using correct hand signals, in drivers sight, no walking backwards, remaining outside crush area, use of radio
22. No loading when reversing	Where reversing cannot be avoided e.g. some cul-de-sacs, then the procedure should be "reverse in – drive out"
Public Safety	Standard Required
23. Crew monitoring hopper and bin lifts	Public kept clear of rear of vehicle during compaction and bin lift cycle
24. Spills cleaned up	All dropped rubbish is collected and disposed of correctly
25. Bins returned to collection point	Once emptied bins returned to where they were collected from
26. Brush and shovel attached to vehicle	Fitted to vehicle and used to clear up dropped rubbish

Appendix 2

Waste and Recycling Collection Activities - Monitoring Individuals/Collection Crews Matrix							
Name	Position	Frequency	Frequency	Frequency	Frequency	Overall	Corrective Actions if required
	Driver	Green	Green	Green	Green		
	D	Green	Green	Red	Green		
	D	Green	Yellow	Green	Green		
	D	Green	Green	Green	Red		
	D	Red	Green	Green	Green		
	D	Green	Green	Yellow	Green		
	D	Green	Red	Green	Green		
	D	Yellow	Green	Green	Green		
	D	Green	Yellow	Green	Green		
	D	Green	Green	Red	Green		
	D	Green	Yellow	Green	Green		
	Driver/Loader	Green	Green	Green	Green		
	DL	Green	Yellow	Red	Green		
	DL	Green	Red	Green	Green		
	DL	Green	Green	Yellow	Green		
	DL	Yellow	Green	Green	Green		
	DL	Green	Yellow	Yellow	Green		
	DL	Green	Green	Green	Green		
	Loader	Green	Green	Green	Green		
	L	Green	Yellow	Green	Green		
	L	Green	Green	Yellow	Green		
	L	Green	Green	Green	Green		
	L	Yellow	Green	Green	Green		
	L	Green	Green	Green	Red		
	Agency	Green	Yellow	Red	Green		
	Agency	Green	Green	Green	Green		
	Agency	Yellow	Green	Yellow	Green		
	Agency	Green	Yellow	Red	Green		
	Agency	Green	Green	Green	Green		

Key



Serious occurrence leading to possible disciplinary
 Minor occurrence
 Total compliance

	Check	Yes	No	Comments
Client's management of the contract				
1	Is there a robust framework for monitoring and review of the contractor's health and safety practice and performance?			
	Does it include <ul style="list-style-type: none"> • what should be monitored? • how H&S should be monitored? • frequency of monitoring (with flexibility to change dependant on standards)? 			
2	Is the role of the client monitoring officer clearly identified?			
3	Are all the monitoring officers trained and competent (see paragraph 4, page 2)? How is this assessed?			
4	Do monitoring officers <i>have access</i> to and <i>use</i> the expertise of others e.g. Health and Safety officers, Health and Safety forums/networks?			
5	Do monitoring officers have the authority to deal with imminent/serious risk to contractor employees or members of the public?			
	Is there an agreed procedure for this with the contractor?			
6	Are contractor accidents and ill health monitored? If so, is appropriate action taken to prevent a recurrence?			
7	Is there a system to ensure issues referred by the client to the contractor are actioned?			
8	Have effective lines of communication between client and contractor been established?			
Contractor management arrangements				
9	Does the contractor have a robust framework for monitoring health and safety?			
10	Are the contractors delivering the service to the agreed method statements (as outlined during procurement)?			
	Do those method statements continue to reflect the work activity being undertaken?			
11	Are there key H&S performance indicators in the contract?			
	If so, are they measured and assessed?			
12	Is there a contract review committee set up?			
	Does the committee have reps from LA and contractor senior management, elected member/s and worker reps?			
	Does health and safety always feature on the agenda?			
13	Has a suitable method of feedback to the contractor been developed?			

Six key strategy themes



Acting together

Promoting broader ownership of health and safety in Great Britain



Supporting small employers

Giving SMEs simple advice so they know what they have to do



Tackling ill health

Highlighting and tackling the costs of work-related ill health



Keeping pace with change

Anticipating and tackling new health and safety challenges



Managing risk well

Simplifying risk management and helping business to grow



Sharing our success

Promoting the benefits of Great Britain's world-class health and safety system



Helping
Great Britain
work well

Managing risk well



Managing risk well
Simplifying risk management
and helping business to grow

- Risk assessments don't need excessive paperwork
- Risk management doesn't mean managing trivial risks
- Getting it wrong inhibits productivity, creativity and growth
- Managing the right risks in the right ways
- Help smaller companies get it right efficiently and effectively

Grounds and Parks



What are the common causes of serious incidents?

- Arboriculture
 - Falls from height
 - Being struck by falling objects
 - Contact with moving machinery
- Amenity horticulture
 - Vehicle overturns
 - Contact with moving machinery
 - Musculo-skeletal disorders

Recent prosecutions

Sentences after tree-felling incident leaves worker in wheelchair

Cleaning contractor employed to fell tree at a school!
Partially cut branch struck ladder causing worker to fall.

Suffered permanent spinal injuries

Incompetent contractor, no risk assessment, no safe system of work at height, nor training, inadequate PPE

Client fined £35,000 plus £25,000 costs.

Contractor 18 months prison sentence and £2,000 costs

Recent prosecutions

Cirencester Town Council fined for worker's injuries (August 2014)

Employee suffered fractured ribs when the ride-on mower he was operating overturned.

Slope was 64 degrees, mower not suitable for slopes exceeding 25 degrees

Failure to carry out risk assessment, plan the work, provide suitable equipment and adequate training and instruction.

Fined £12,000 with £17,000 costs

Current issues

- Glyphosate
- Remote control/robot devices
- HAVS

Glyphosate

- Most widely used herbicide in amenity horticulture.
- Been in use for many years
- It's approval recently come up for renewal – question over whether the product was a potential human carcinogen.
- Only limited approval has been granted.
- Local authorities and contractors are concerned as there are no readily available cost effective chemical alternatives, and alternatives to chemicals, such as strimming or heat treatment, are expensive and bring a different set of risks are involved
- HSE's current position statement – Was due for renewal July 2016 but EC extended approval until Dec 2017 while further research carried out.

Current Issues

Remote control/robot devices

- Most common cause of fatal and serious injuries is overturning mowers.
- Remote control devices provide an opportunity to remove the operator from a place of risk and are becoming more affordable
- Do not forget operator training is essential if this equipment is to be used safely and risk assessment is required to anticipate novel human/machine interactions.

Current issues

HAVS

- A common cause of injury and civil claim in the landscaping industry.
- Remember to take into account vibration levels when purchasing tools. It is not just about low vibration tools,
- Minimise risks
 - Choose the right tool for the job
 - properly maintained tools
 - job rotation .
- Health surveillance is required.

Managing risks well

- identify the real risks – *both safety and health*
- keep things as simple and straightforward as possible
- *proportionate* management of the risks

Thanks for listening

