

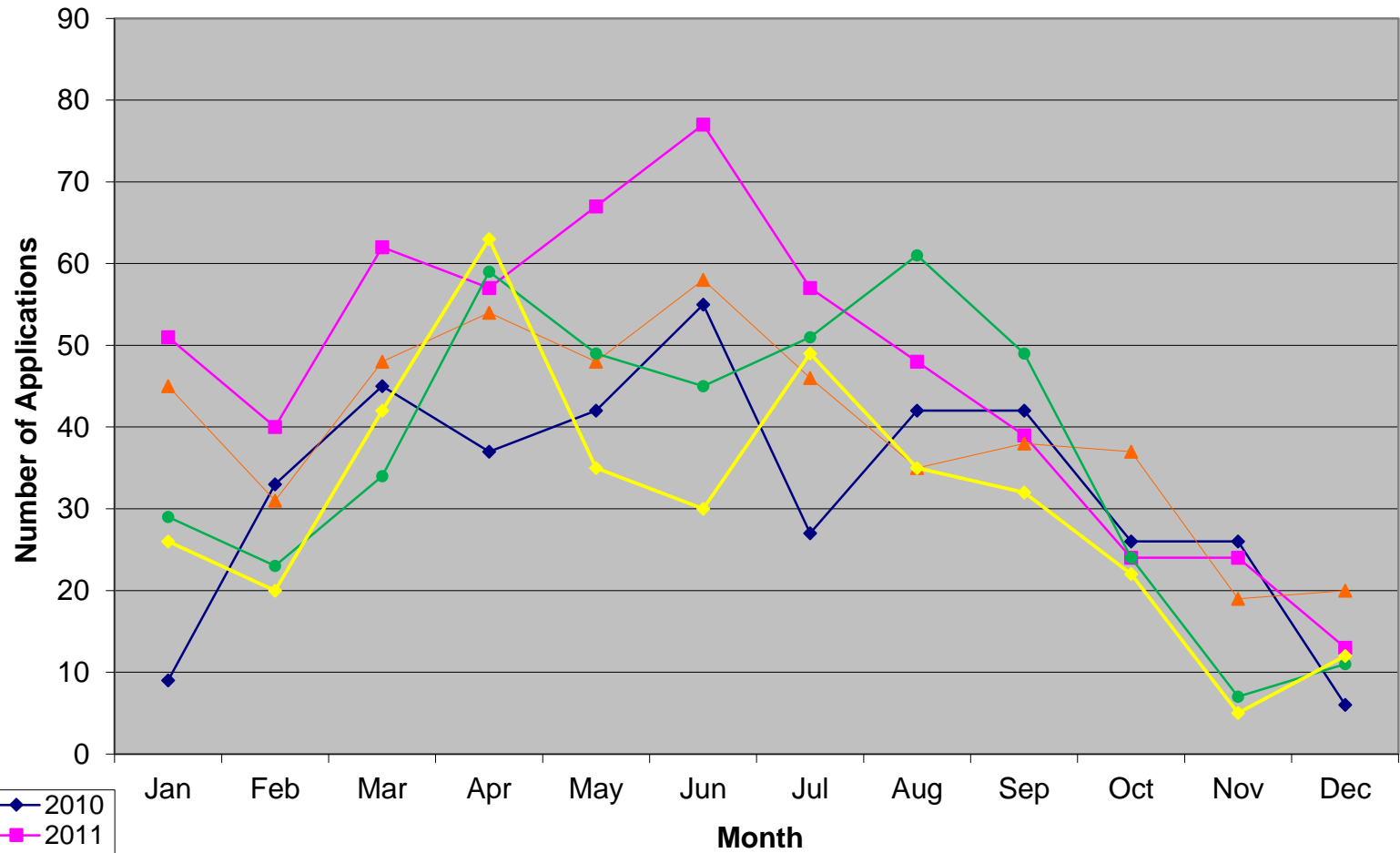
# 19<sup>th</sup> & 20<sup>th</sup> Century

- 1887 First Government Act compelling provision of plots for 'Labouring Poor'
- 1888 Local Government Act forms Councils as we know them today
- 1908 The Allotments Act makes provision a statutory duty and defines the maximum size
- 1925 Allotments Act revision Section 8 – restrictions on the sale of Allotment Land  
Repeal of the necessity for an Allotments Committee
- 1950 Right to keep Hens and Rabbits  
'Reasonable Rent' and provision of ability to give discounts  
Post war decline of Allotments  
Removal of the wording 'Labouring Poor' from the Act
- 1963 London Government Act removes the statutory duty to provide from London Boroughs

# 21<sup>st</sup> Century

- 2001 LGA commissions 'Growing in the Community' Strategy Guidance
- 2008 LGA publishes a 2<sup>nd</sup> Edition in response to high demand
- 2010 LGA publish 'A Place to Grow' in response to growing demand
- 2011 Localism Act
- 2012 National Planning Framework  
Community Infrastructure Levy
- 2013 Health & Social Care Act (LA Responsibility)
- 2014 Modernisation of DCLG Allotment disposal guidance: Safeguards and Alternatives

## Allotment Application Rates Stoke on Trent 2011 to 2014



- ◆ 2010
- 2011
- ▲ 2012
- 2013
- ◆ 2014

# The Future

- Whose responsibility (Statutory Duty)
- Managing demand – recorded and latent
- Behind demand (lifestyle, food security)
- Public Health Agendas
- Changes in other Legislation (Planning etc)
- Devolved or Council management