

# BARCELONA HOUSING SYSTEMS

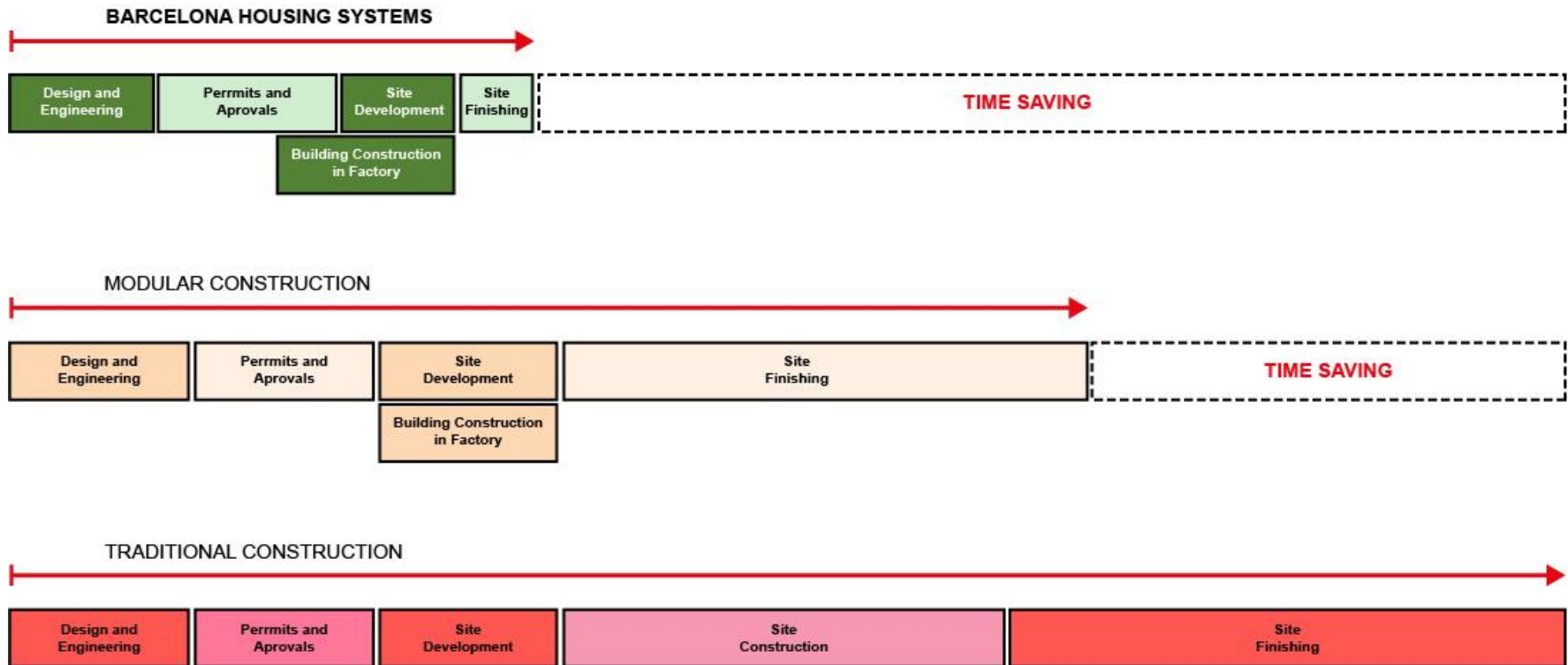
An Industrialized Alternative  
For Modular Construction

The Big Energy Summit 2016

Warwickshire 26-27th May

## INTRODUCTION

BHS is revolutionizing the global sector of affordable communities, through disruptive large-scale innovation; integrating environmental sustainability, high quality, reduced costs, speed, social development, modularity and scalability.



## TRADITIONAL CONSTRUCTION

**EXTENSIVE****LOW-RISE:** INTENSIVE USE OF LAND

COSTLY INFRASTRUCTURES

NO GREEN OR PUBLIC SPACES



vs

## BARCELONA HOUSING SYSTEMS

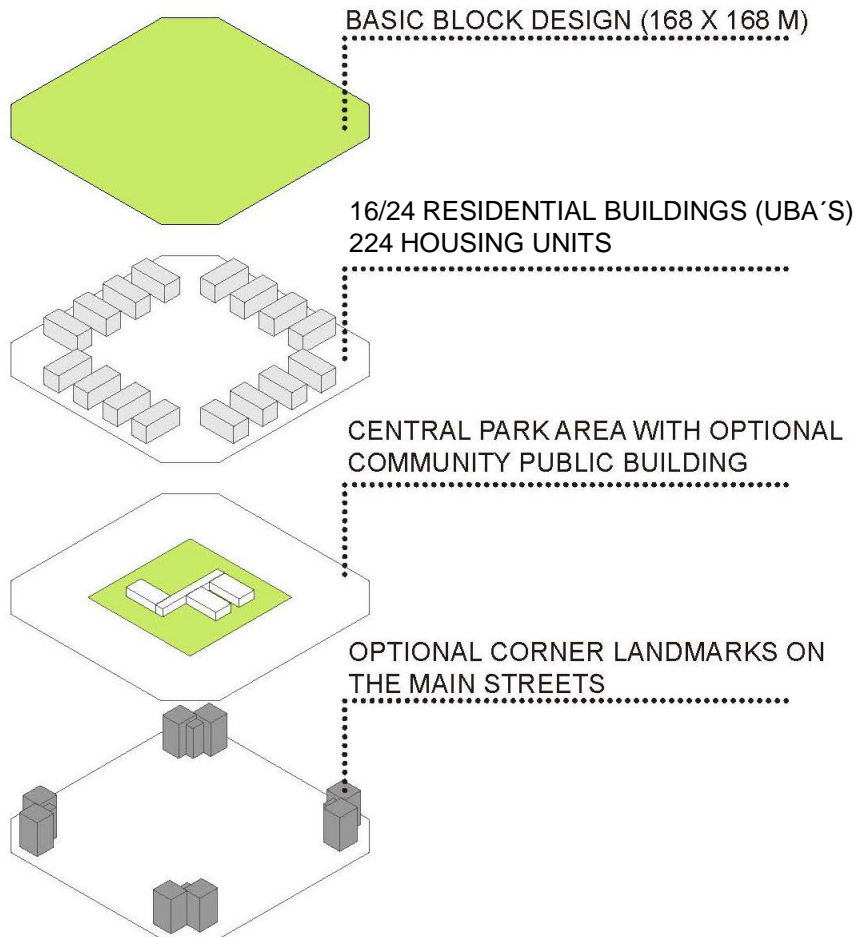
**RATIONAL****MID-RISE:** RATIONAL USE OF LAND

AFFORDABLE INFRASTRUCTURES

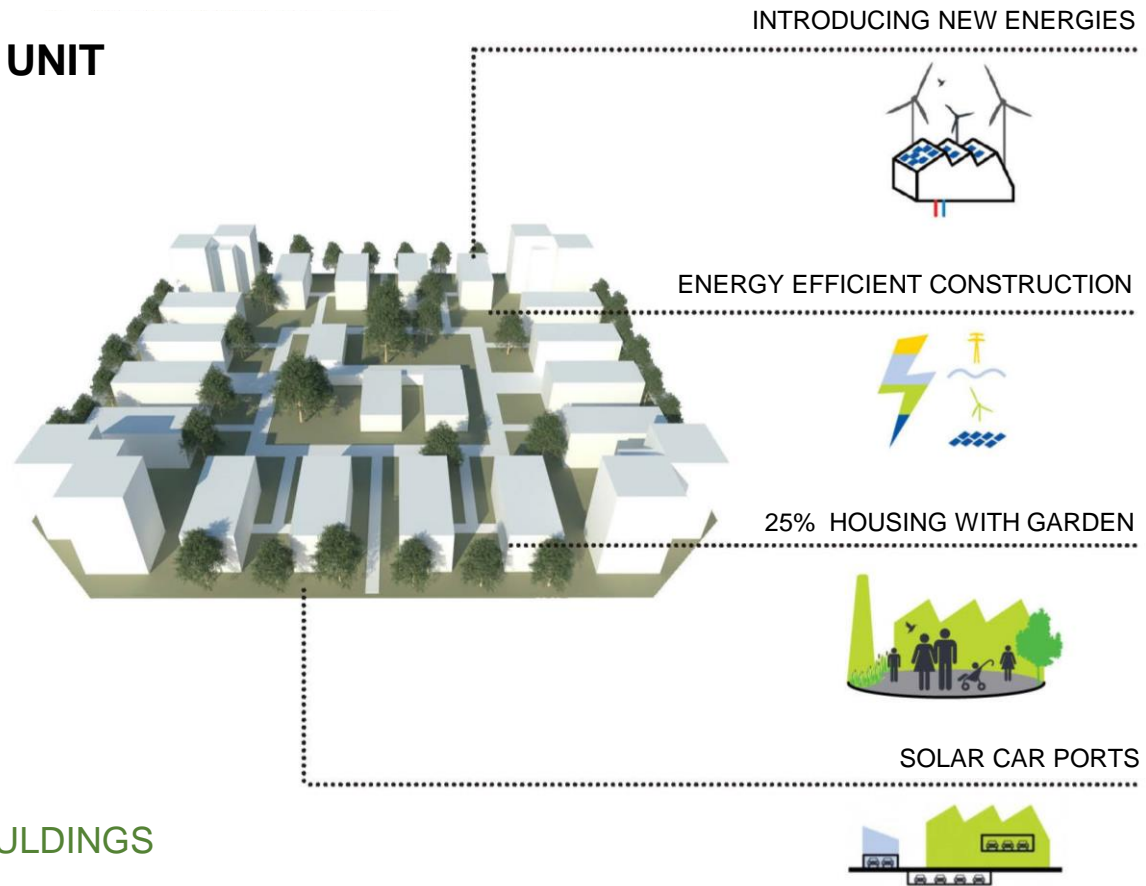
WIDE PUBLIC SPACES



## STEP 1: TOWN PLANNING BASED ON BARCELONA GRID AND BLOCK



## STEP 2: A SCALABLE UNIT



- 20 RESIDENTIAL BULDINGS
- 1 EQUIPMENT
- 2 HA GREEN SPACE
- 400 CONTAINERS

## STEP 3: THE CONSTRUCTION FORMULA

50% Recycled materials



“0” Waste



100% Water and concrete saved



80% CO<sub>2</sub> emissions reduced



Earthquake resistant structure



Energy efficient



International compatible logistics



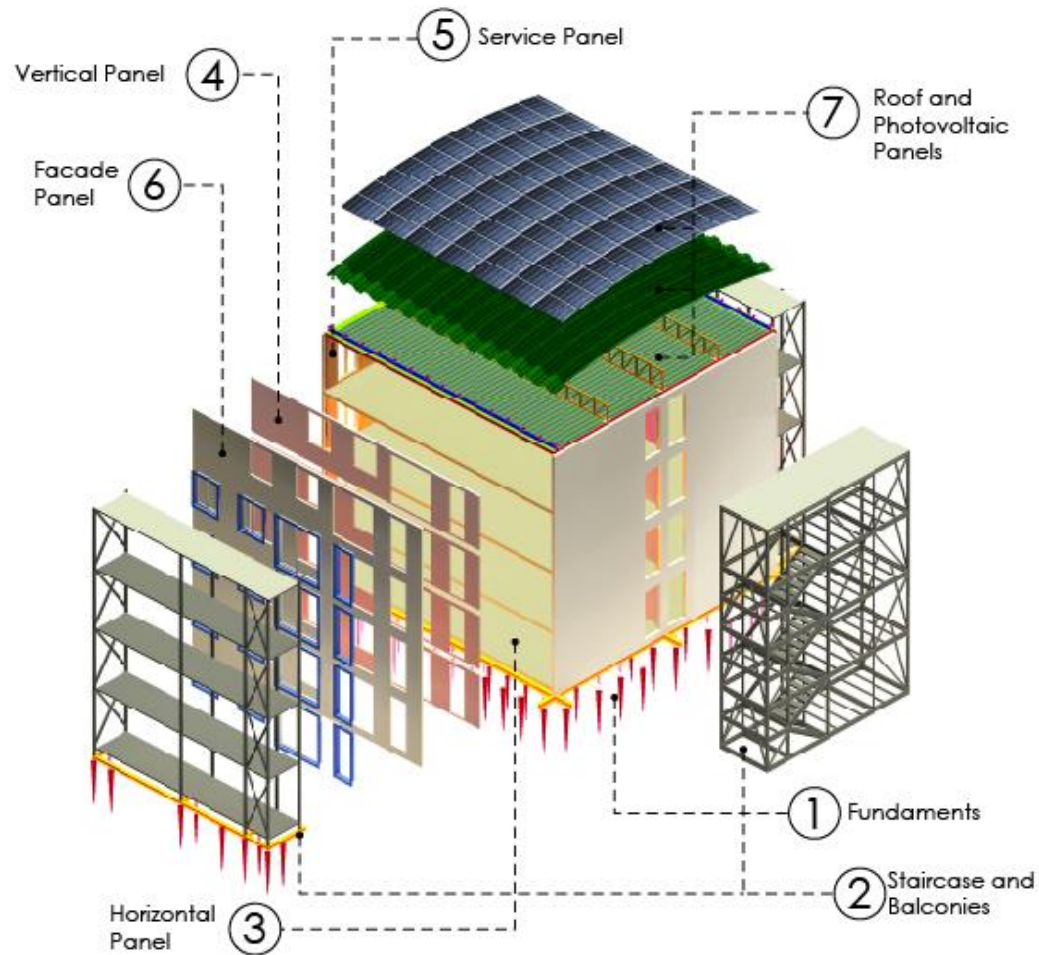
Adaptable to local requirements



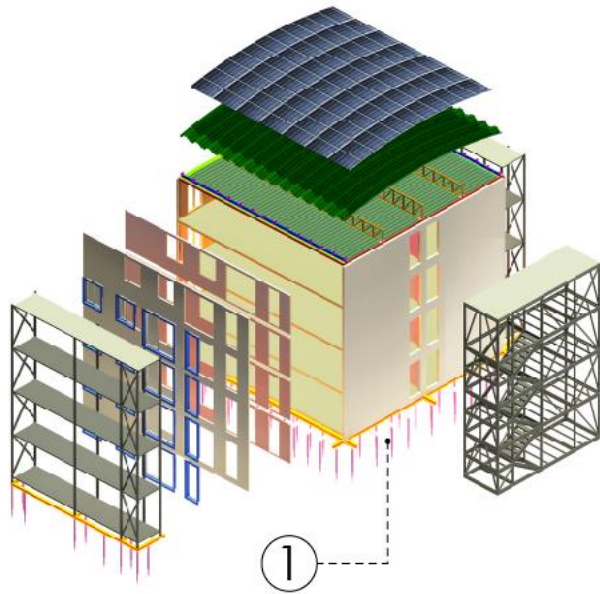
+  
FAST TRACK  
ASSEMBLY



## STEP 4: THE 7 PARTS OF THE BHS BUILDING

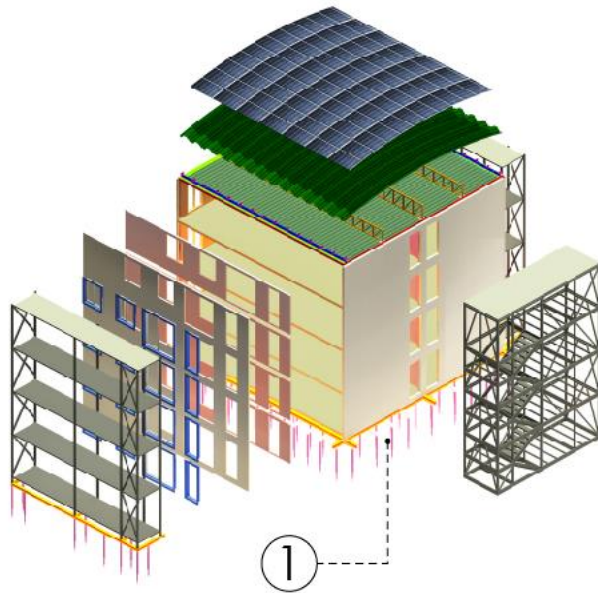


# PART 1. FOUNDATION

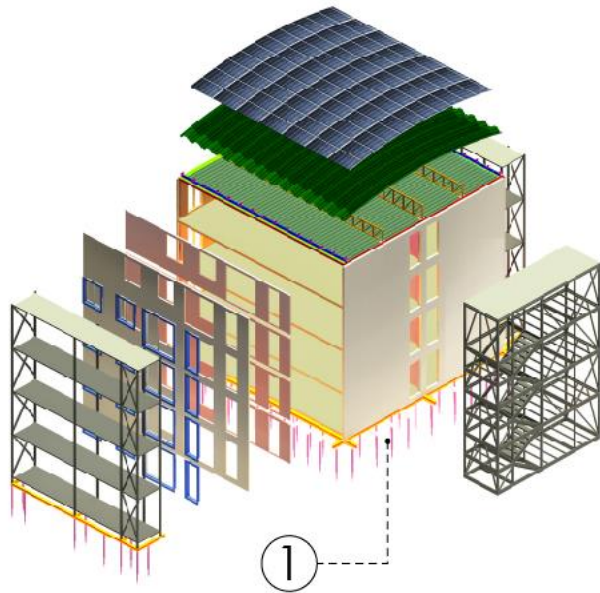




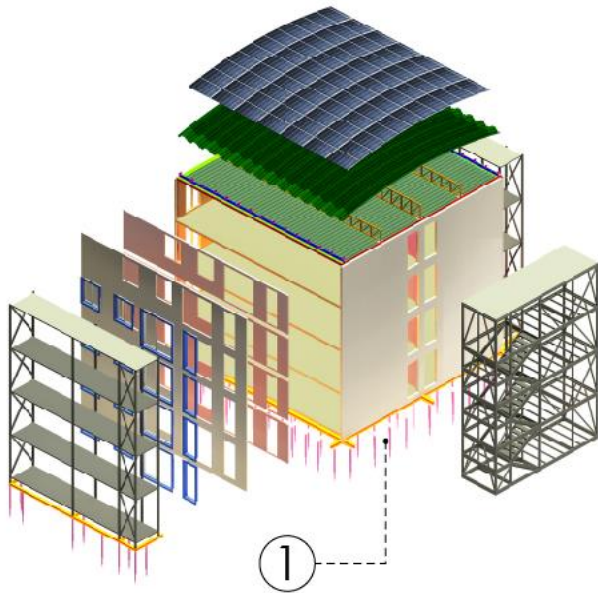
# PART 1. FOUNDATION



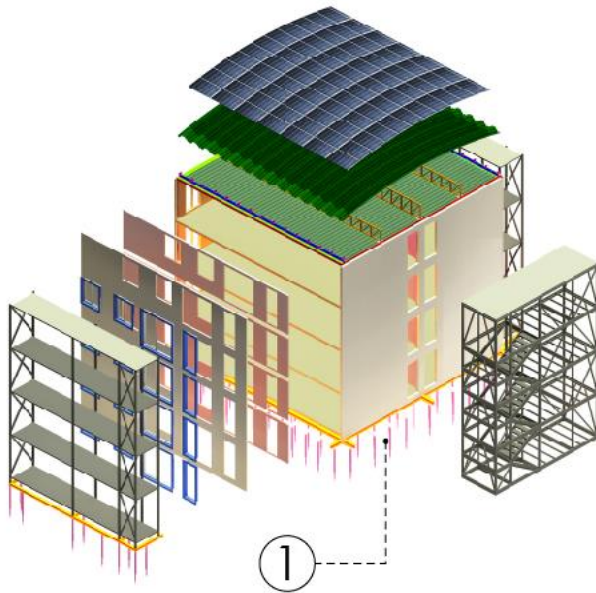
# PART 1. FOUNDATION



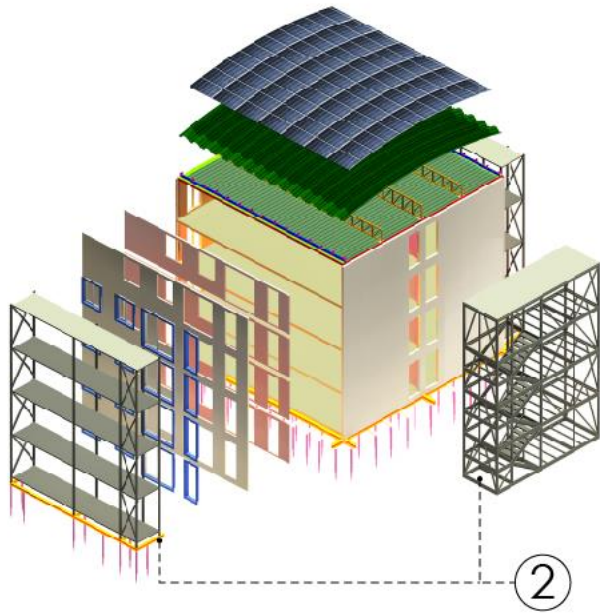
# PART 1. FOUNDATION



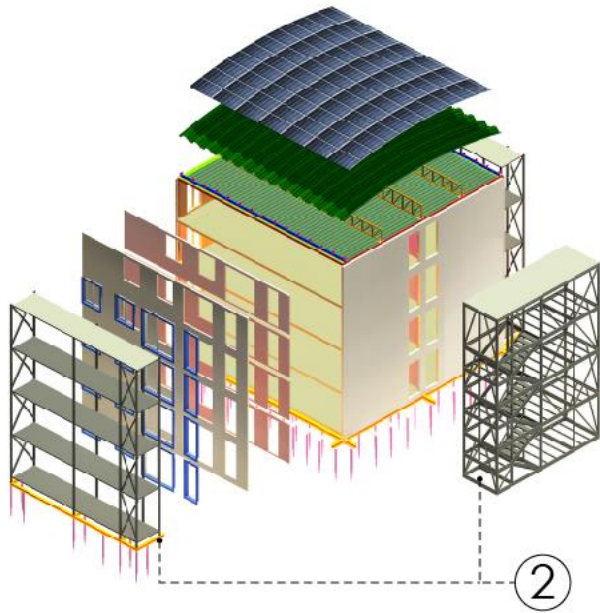
## PART 1. FOUNDATION



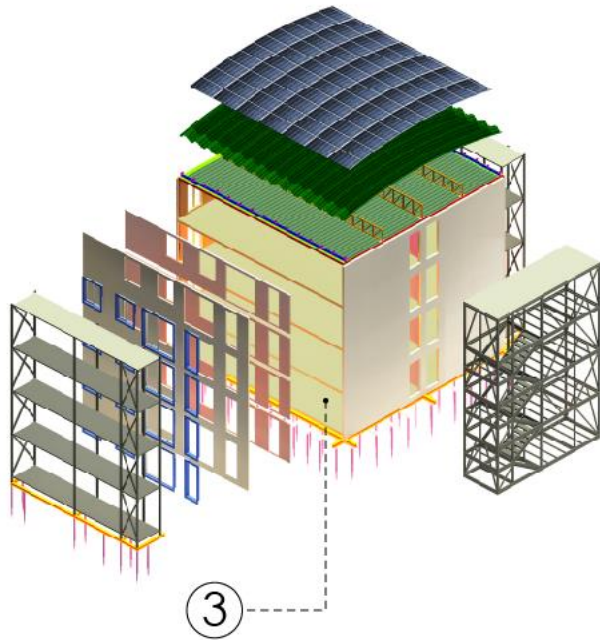
## PART 2. STAIRCASES AND BALCONIES



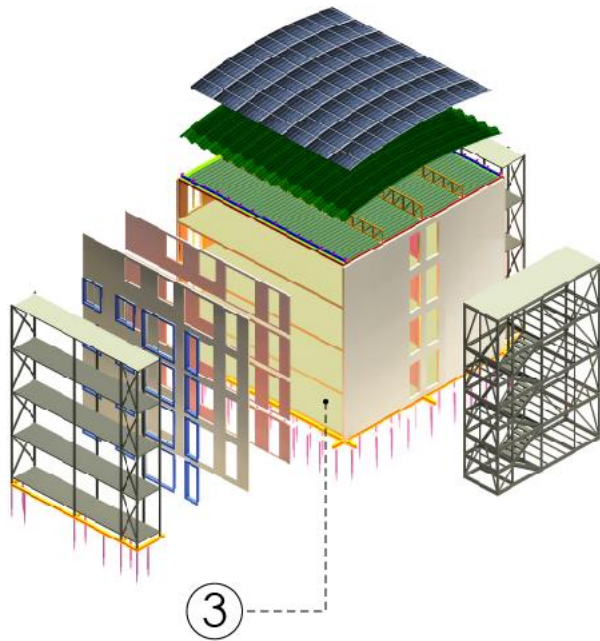
## PART 2. STAIRCASES AND BALCONIES



## PART 3. HORIZONTAL PANELS

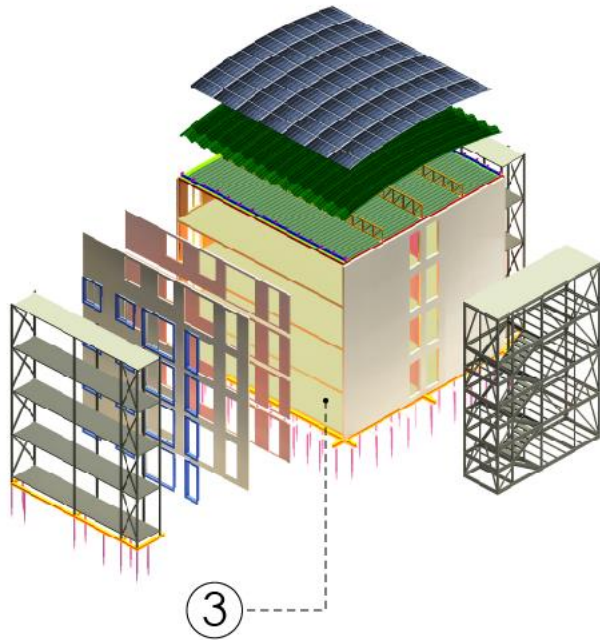


## PART 3. HORIZONTAL PANELS

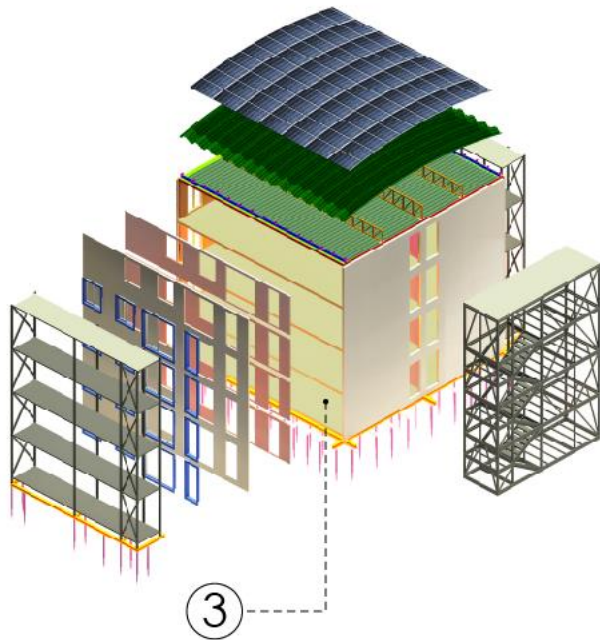




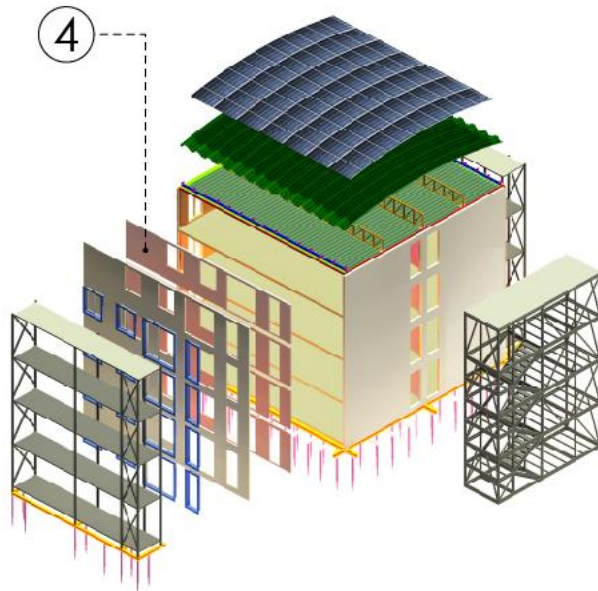
## PART 3. HORIZONTAL PANELS



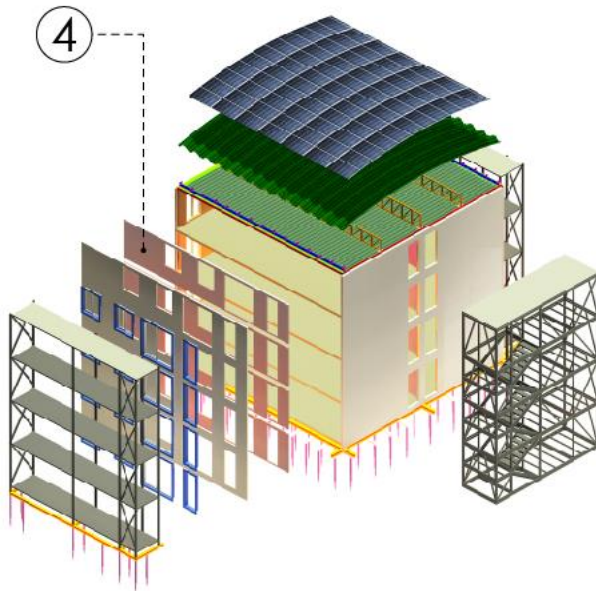
## PART 3. HORIZONTAL PANELS



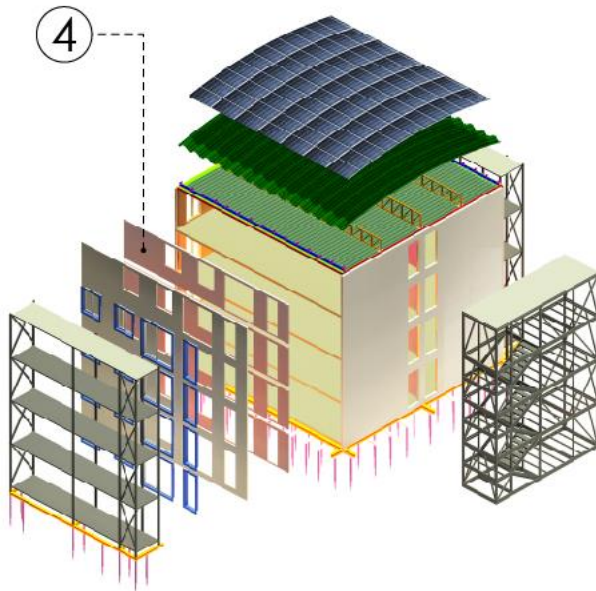
## PART 4. VERTICAL PANELS



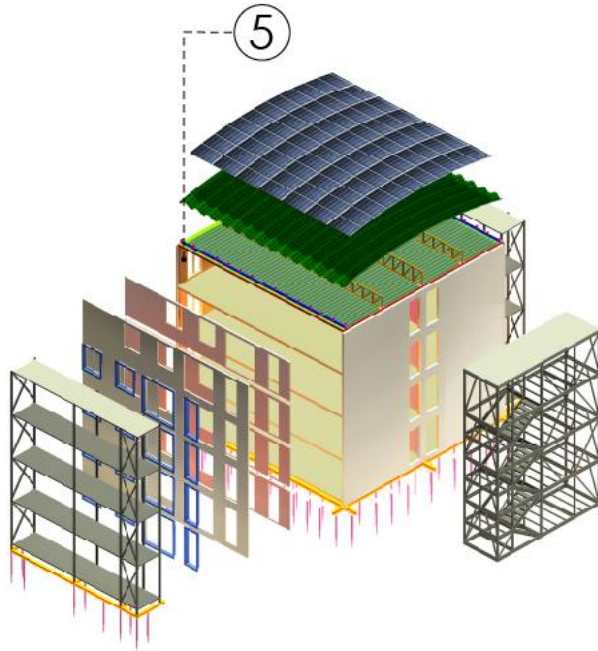
## PART 4. VERTICAL PANELS



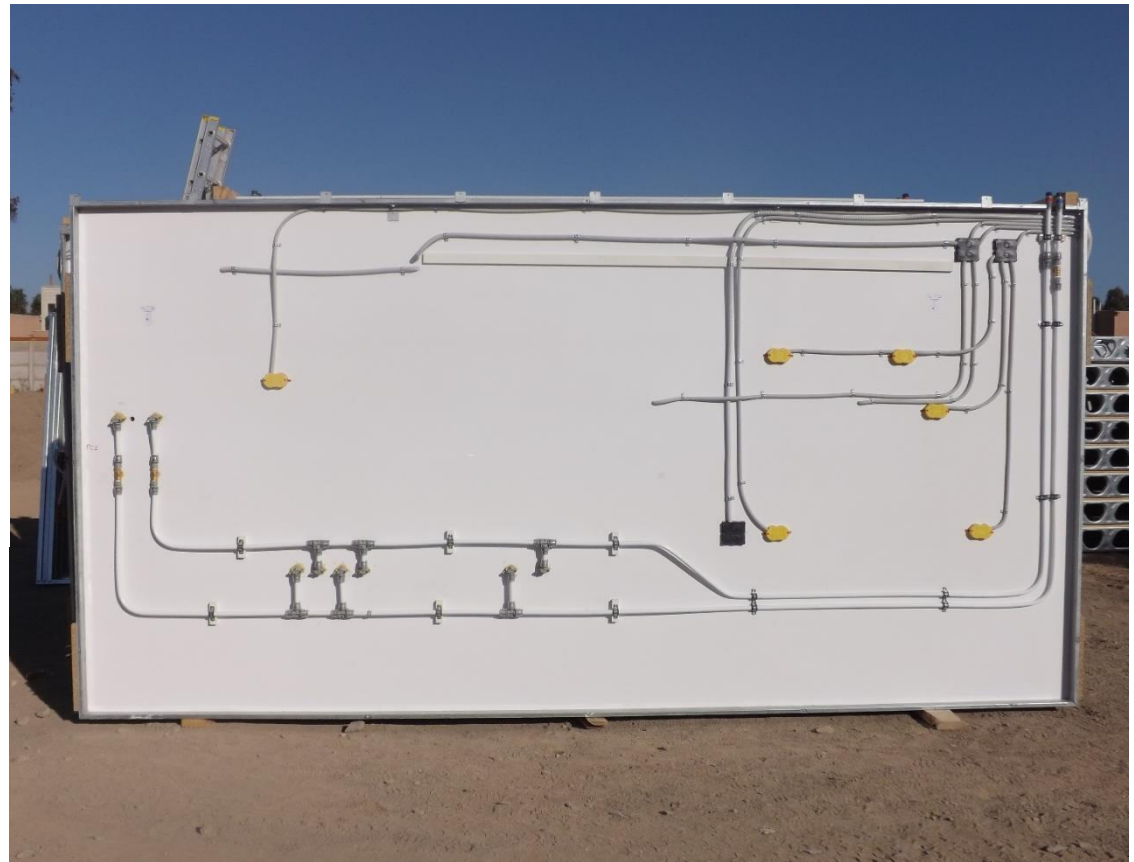
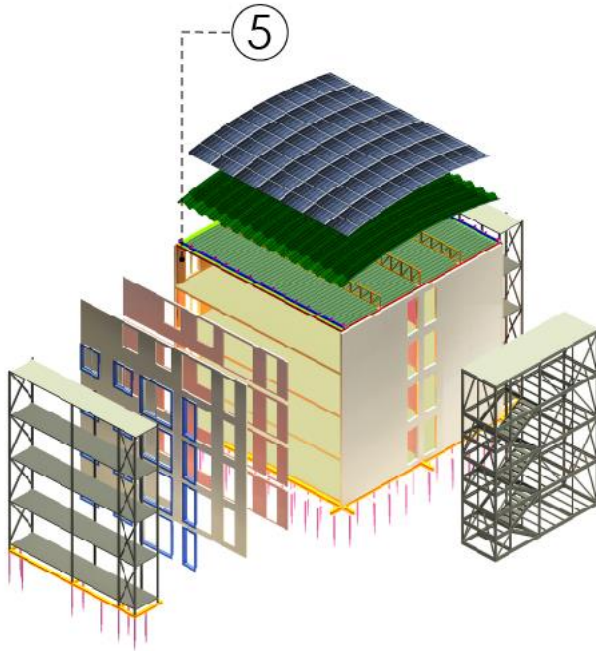
## PART 4. VERTICAL PANELS



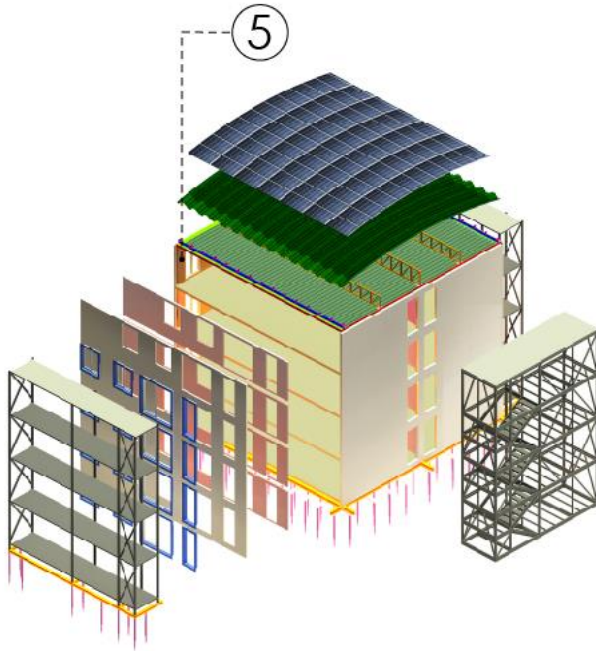
## PART 5. SERVICE PANELS



## PART 5. SERVICE PANELS

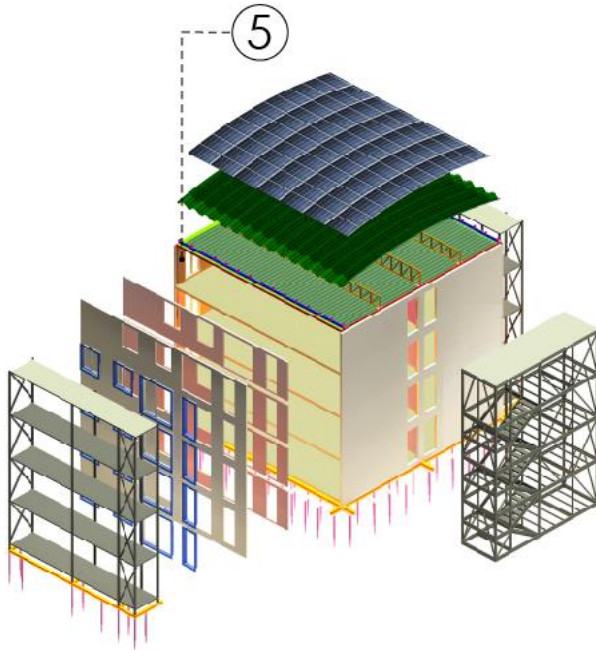


## PART 5. SERVICE PANELS

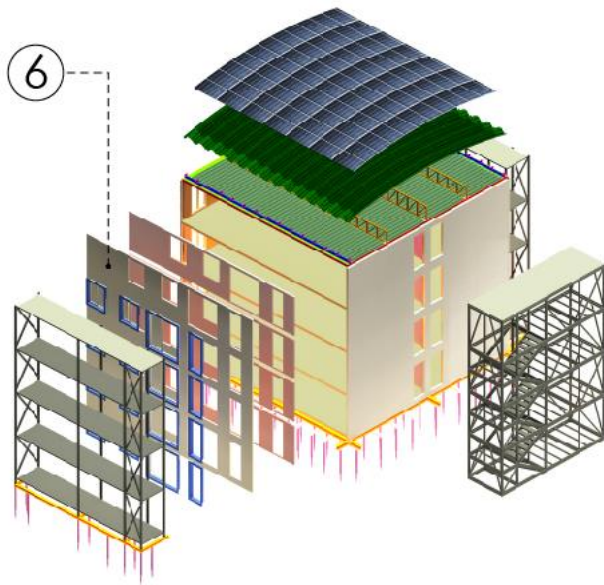




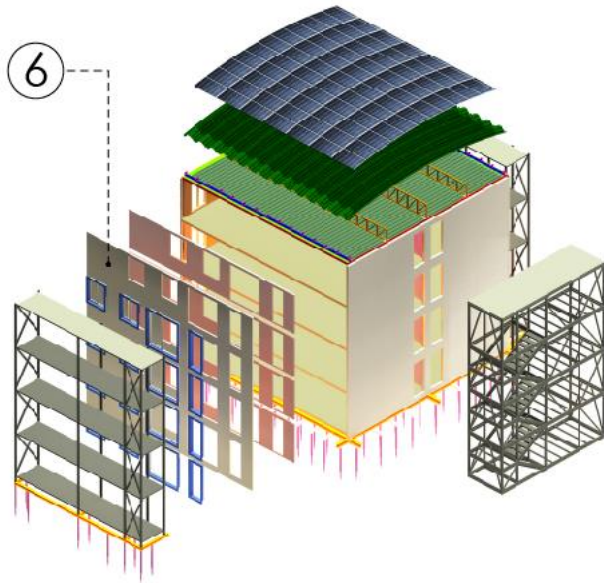
## PART 5. SERVICE PANELS



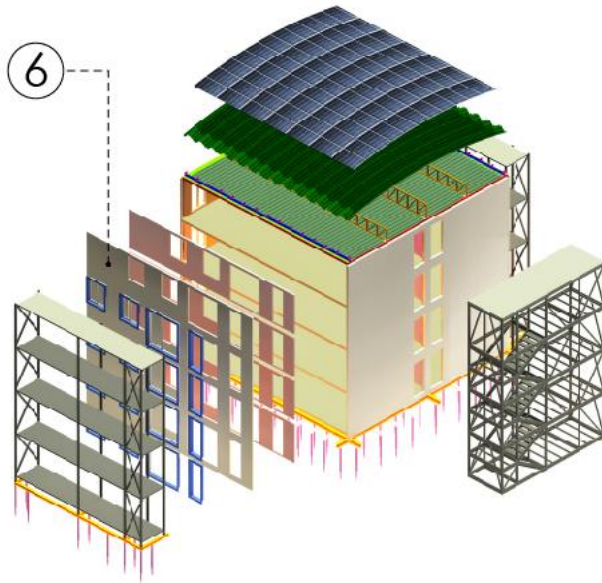
# PART 6. FACADE PANELS



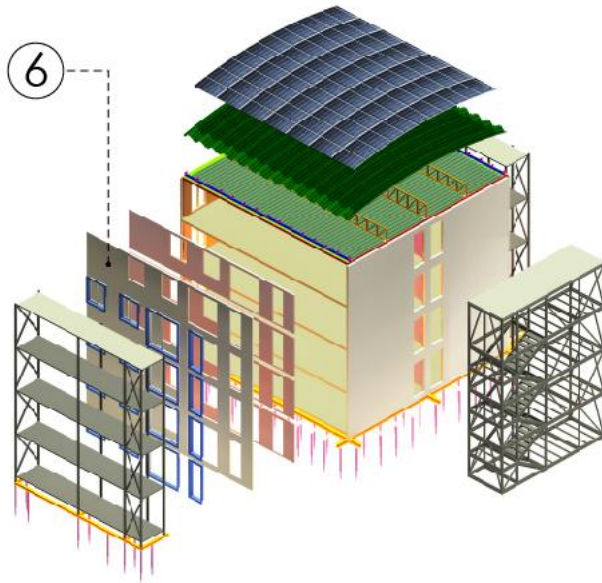
# PART 6. FACADE PANELS



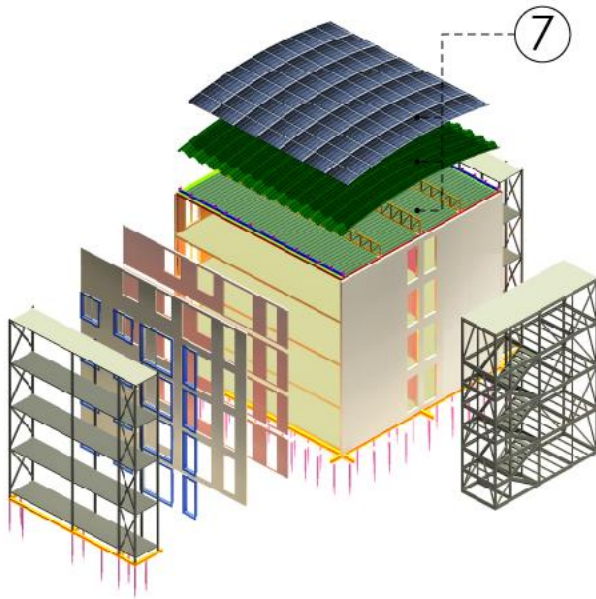
## PART 6. FACADE PANELS



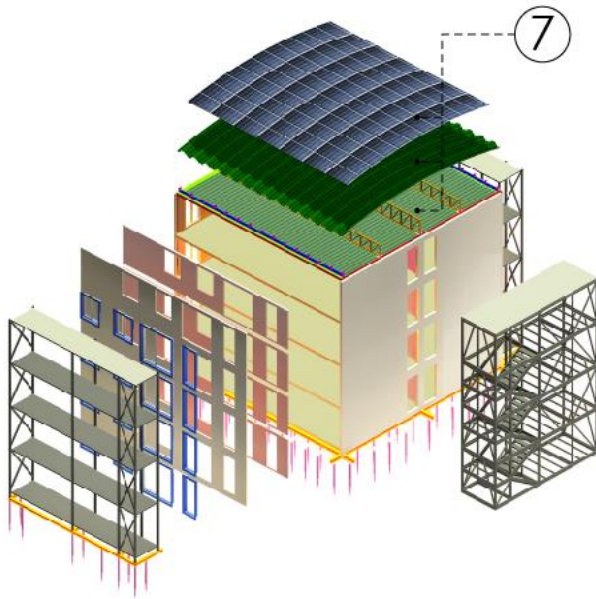
## PART 6. FACADE PANELS



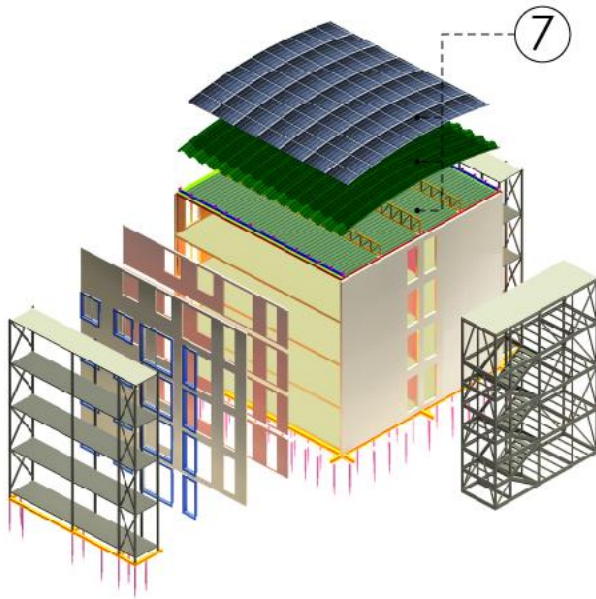
# PART 7. ROOF



# PART 7. ROOF



## PART 7. ROOF





# LIVING ROOM



KITCHEN



## LIVING ROOM



# PRINCIPAL BEDROOM



# DOUBLE BEDROOM



# SINGLE BEDROOM



## CONCLUSION

Our mission is to build the future, through the provision of a perfect framework for **healthy communities**.

