

Creating sustainable schools and communities



Logan Primary - background

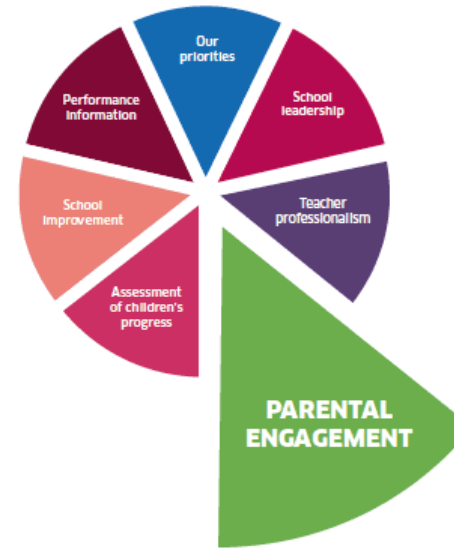
- ▶ Logan is an area of deprivation which suffered with the close of the coal industries
- ▶ The school need a refresh in education.
- ▶ It was clear that the school was a reflection of the community and interventions had to extend out the school gate. We needed to future proof in a sustainable way.

What underpins our approach ?

► National Improvement Framework



► National Performance Framework

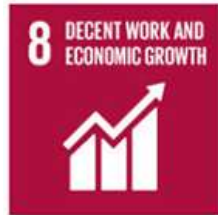


► The Global Goals for Sustainable Development



What have we done ?

- ▶ Shaped our curriculum



- ▶ Widened our achievement

- ▶ Taken sustainability out the class and into the community



School initiatives

- ▶ Eco cabin and poly tunnel
- ▶ Reduction in lamination and consumables by a whopping 63%!!!! And reduced food waste by 2/3rds !!!!!
- ▶ Banned glitter and other protests
- ▶ Grown our own -Horticulture and Husbandry



Wider achievement linked to global goals

- ▶ Passport of skills.
- ▶ Recognised our own gaps - diversity, gender and equality.
- ▶ Built a whole school team approach.



Beyond the classroom

- ▶ Weekly community café
- ▶ The apprentice and Me 2 U
- ▶ Pop up Restaurant
- ▶ Steamie and Dignified Food
- ▶ TACO





The Global Goals
go beyond green
issues to build a
sustainable
future for all.

