

# DERBY STREET HOUSING DEVELOPMENT

**Neighbourhood Services**



# Introduction

Louise Butchart

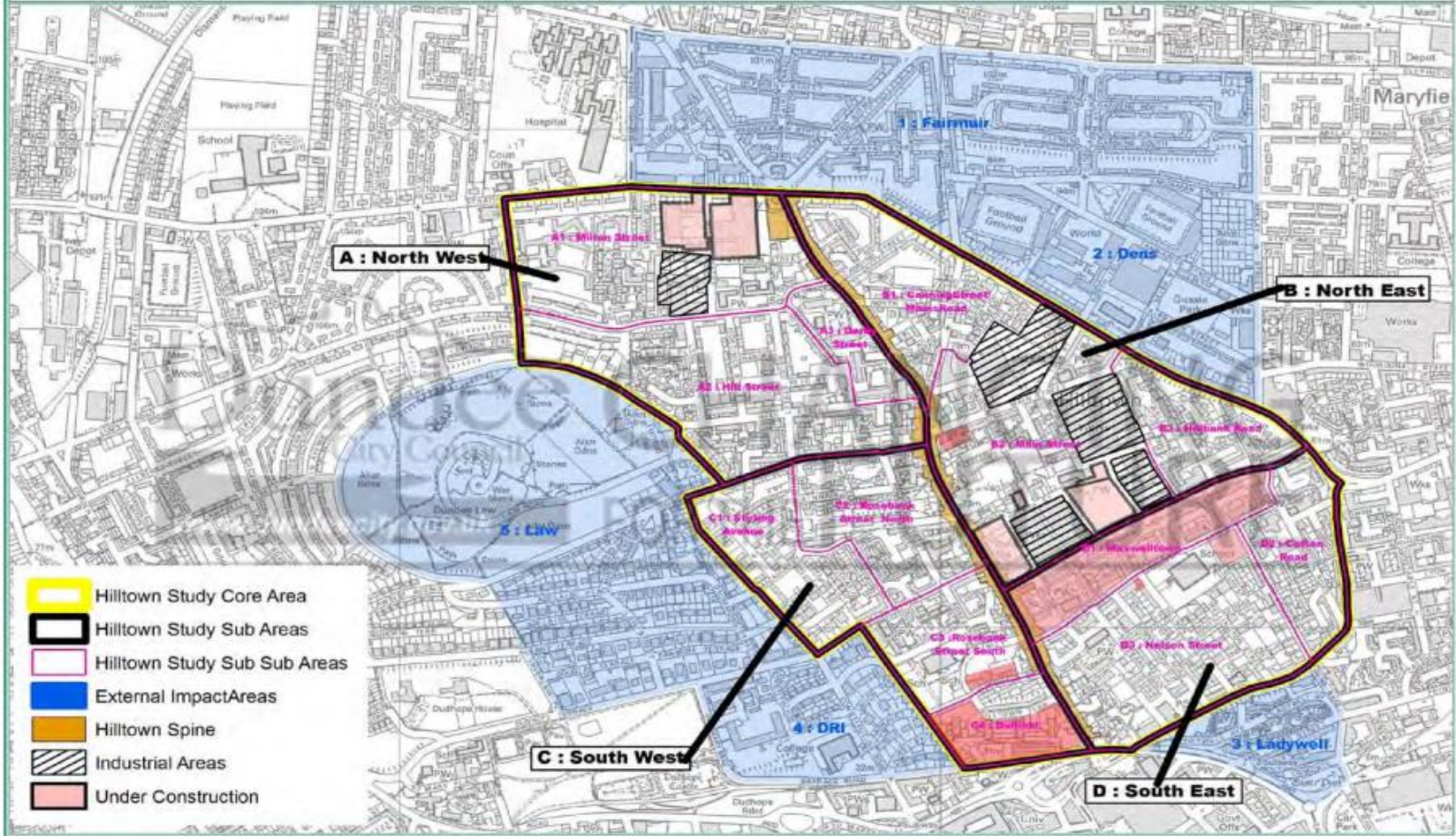
Head of Housing, Construction and  
Communities

Dundee City Council

# Hilltown Skyline



# HILLTOWN STUDY AREA - CORE AND EXTERNAL IMPACT AREAS



This map is reproduced from Ordnance Survey material with the permission of Ordnance Survey on behalf of the Controller of Her Majesty's Stationary Office © Crown Copyright. Unauthorised reproduction infringes Crown copyright and may lead to prosecution or civil proceedings. 100023371 2007

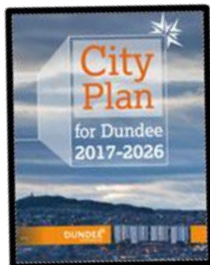
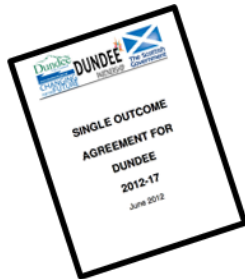


Department: Planning and Transportation  
 Printed by: Lesley Coultis  
 Print date: 12/12/07

Scale - 1:10,000



# STRATEGIC LINKS



- National Strategy to increase the Supply of Affordable Housing across Scotland.
- Local target to build 1,000 new homes by 20/21
- Single Outcome Agreement (2012-17) - People in Dundee are able to live independently and access support when they need it.
- City Plan (2017-2026) – Building Stronger Communities



# Derby Street Development 1971 To 2013



# Demolition 2013



# Project Team

## Client Team

- Dundee City Council
- Hillcrest Homes
- Dundee Health & Social Care Partnership
- Fleming Trust

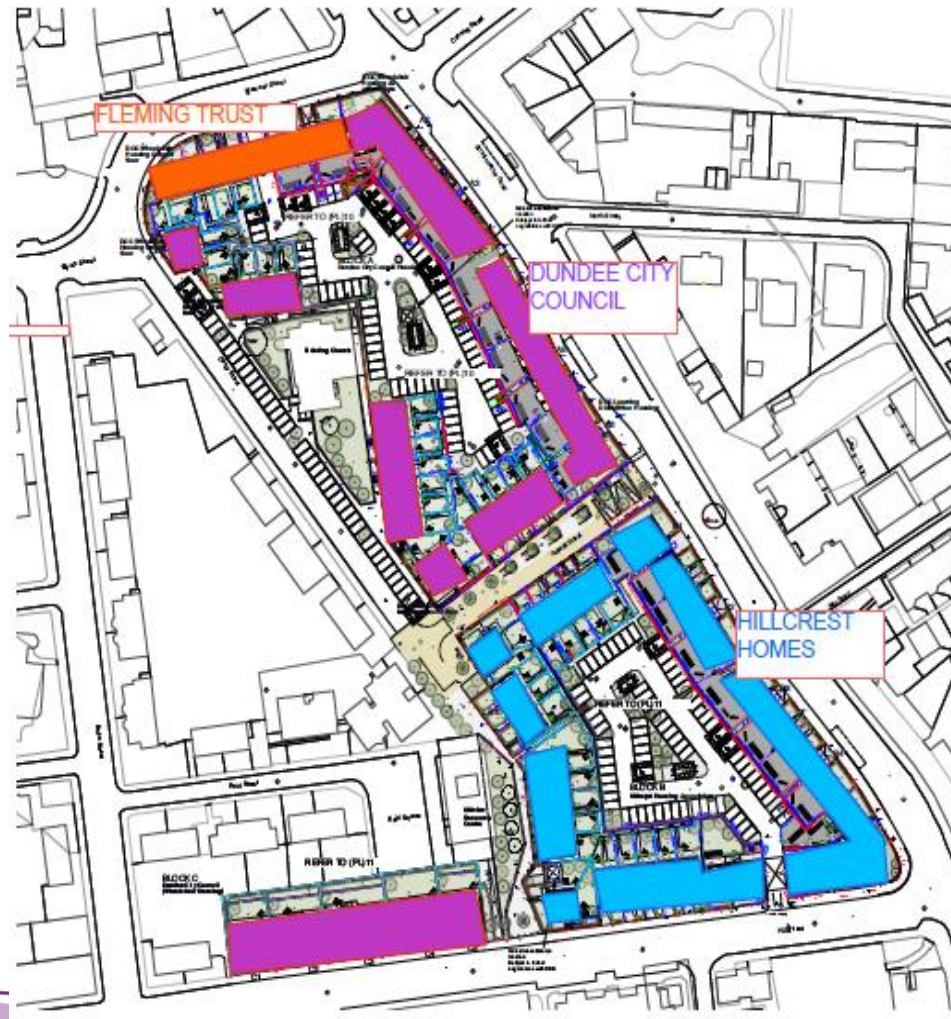
## Design & Construction

- Willmott Dixon
- Robertson Partnership Homes
- Collective Architecture
- Langmuir & Hay
- Harley Haddow
- Hawthorne & Boyle
- Local Subcontractors





# PARTNERSHIP APPROACH



# DESIGN NEEDS

- **Dundee City Council – 70 units**

General Needs, Wheelchair adapted, Supported Accommodation

- **Hillcrest Homes – 80 units**

General Needs, Mid Market Rent

- **Fleming Trust – 12 units**

General Needs , Wheelchair Adapted

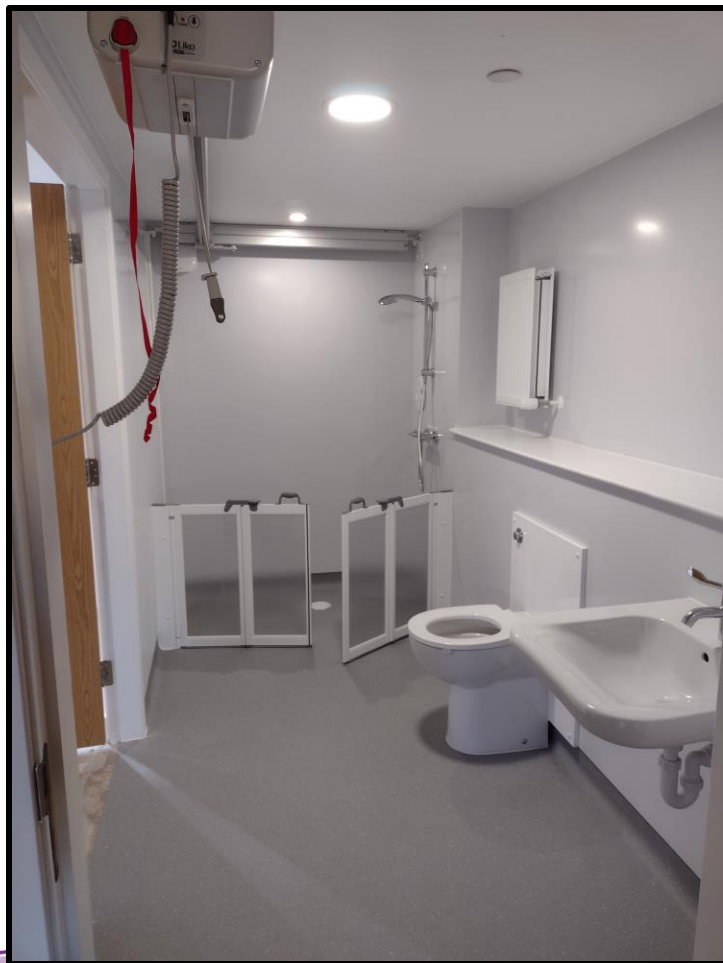


# Challenges in Delivery





# Wheelchair Bespoke Designs



# Rooms With A View



# Thank You