

Tonic Housing

Creating LGBT+ affirming retirement communities

Anna Kear She/They

Design process

3.1 Our brief from Tonic

Tonic requirements/minimum specifications for the new care are as follows:

Essential

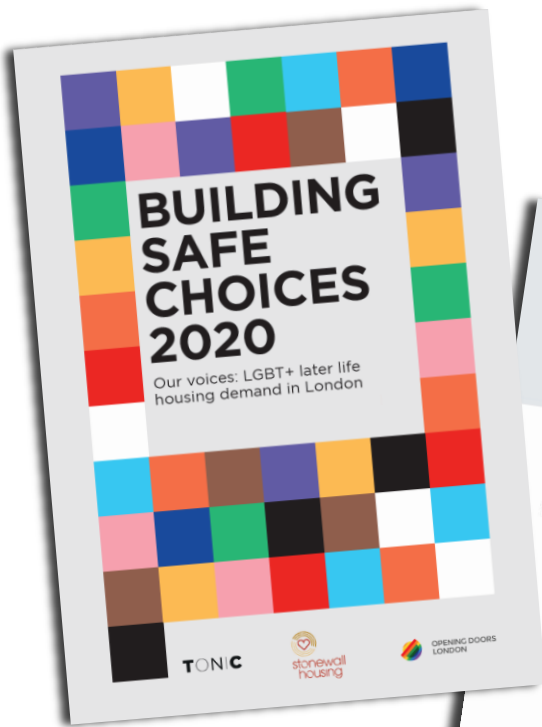
- Fully wheelchair accessible throughout in all apartments and communal spaces (ramps)
- Communal space/hub - multi-use rooms - place to come together - additional space for activities to include - collective area - space to also be used by non-residents
- Shared outdoor spaces for residents only
- Outdoor garden space (plant, flowers)
- Mix of apartment sizes 1 & 2 bedrooms (include one apartment)
- Mobility scooters/bicycle storage
- Lifts for access to all levels

Desirable

- Wellness activities (possibly exercise equipment)
- resident owned @ 2 levels
- Dementia/overseer rooms for staff/care provider

fun
creative inviting
warmurbastylishtylish
progressive contemporary
open-minded





Read the full report at

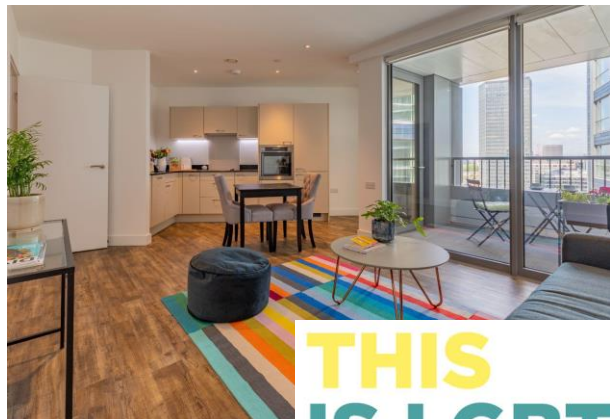
bit.ly/2020buildingsafechoices

<p>“WE FEEL LIKE THE FORGOTTEN GENERATIONS”</p>		<p>“I AM PREPARED TO DOWNSIZE, BUT WANT TO STAY IN LONDON”</p>
	<p>“WHEN WILL SOMETHING TANGIBLE BE AVAILABLE FOR LGBT+ PEOPLE?”</p>	
<p>“THE FINANCIAL IMPLICATIONS OF BEING TRANS IMPACT ON YOUR HOUSING OPTIONS”</p>		<p>“I’M SCARED OF MY NEIGHBOURS FINDING OUT I’M GAY”</p>
	<p>“UNLESS YOU HIDE YOUR TRUE IDENTITY YOU WILL NOT RECEIVE SUPPORT FROM YOUR FAMILY”</p>	



THE LAUNCH OF TONIC@BANKHOUSE

TONIC



**THIS
IS LGBT
OLDER
LIVING**





JOIN US @



24.11.2022 | 3 - 4.30 PM

AN ART TO GETTING OLDER?

With Kit Green and Tonic Housing Residents

TONIC

QUEERCIRCLE

Building 4, 3 Barton Yard, London, SE10 0BN

TONIC

One Housing

PRESENTS

THE ROCKY HORROR PICTURE SHOW

DRESS UP ENCOURAGED!



AT BANKHOUSE MOVIE CLUB

MONDAY 31ST OCT
AT 3PM

IN THE COMMUNITY LOUNGE

TONIC

Sheila Simmonds
#Busylady

DRAG BINGO

TUESDAY
23RD AUGUST

FREE EVENT -
SEE SHERINE FOR
TICKETS



COMMUNITY-LED EVENTS & ACTIVITIES

TONIC



COMMUNITY@BANKHOUSE

TONIC



'OUT' IN THE COMMUNITY

TONIC

**THIS IS
HOW WE
LIVE OUR
LIVES OUT**



LYDIA

TONIC

Contact

0207 971 1091



info@tonichousing.org.uk



tonichousing.org.uk



bob@tonichousing.org.uk

anna@tonichousing.org.uk

STAY IN TOUCH

TONIC