

Lancaster City Council: Simpler Recycling uncertainty, How local authorities are preparing.

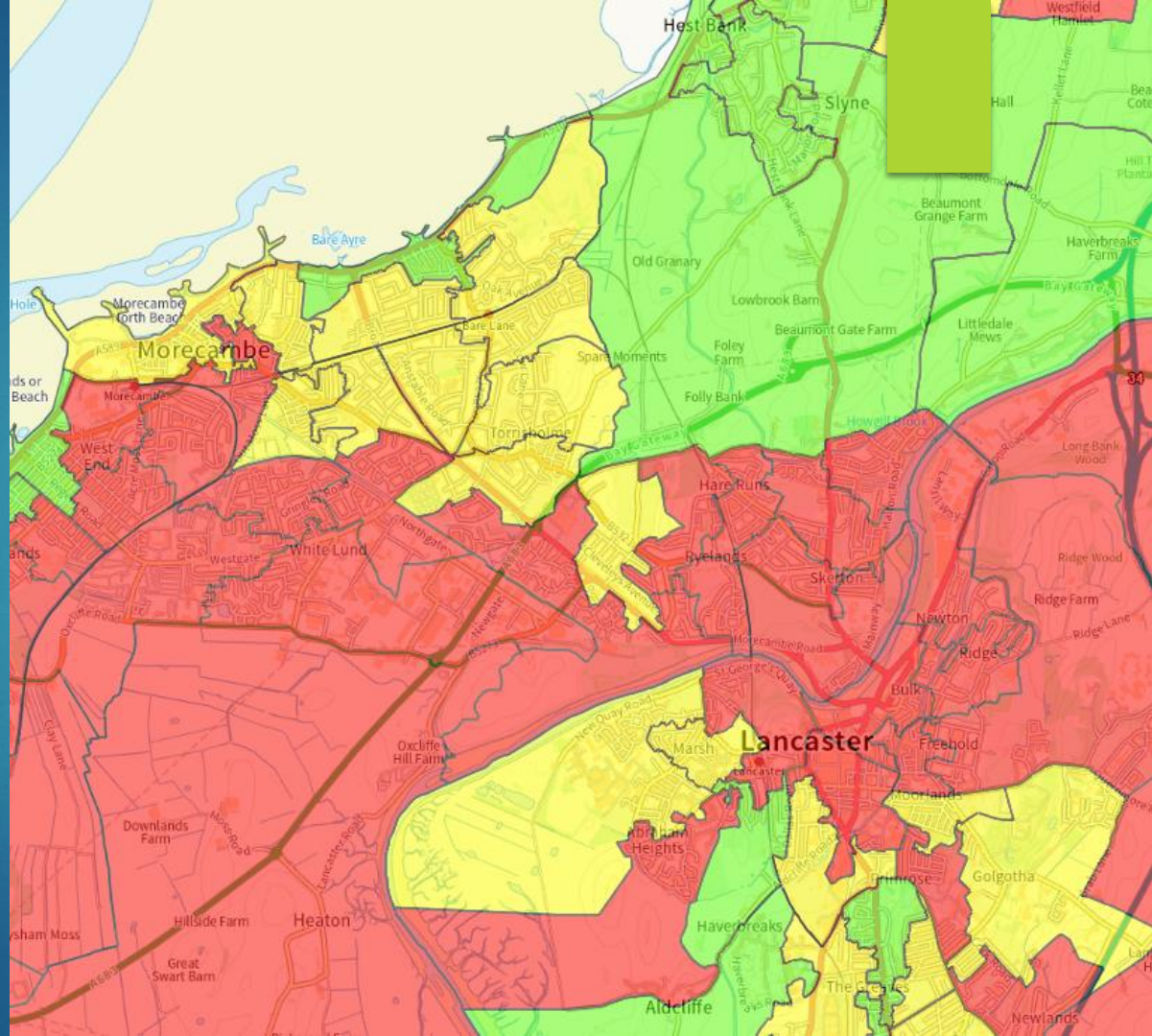


Introduction

- ▶ **Waste Strategy Uncertainties:** Local authorities face ambiguous guidelines for recycling practices, complicating compliance and effective waste management.
- ▶ **Evolving Waste Metrics:** Assessing future waste reduction goals necessitates dynamic metrics to effectively measure sustainability progress.
- ▶ **Community Engagement Necessity:** Public involvement is crucial; educating residents enhances adherence to evolving recycling strategies and practices.
- ▶ **Uncertainty in Revenue Burden Funding:** Local authorities face fiscal planning challenges with the introduction of Burden funding combined with demographic influence

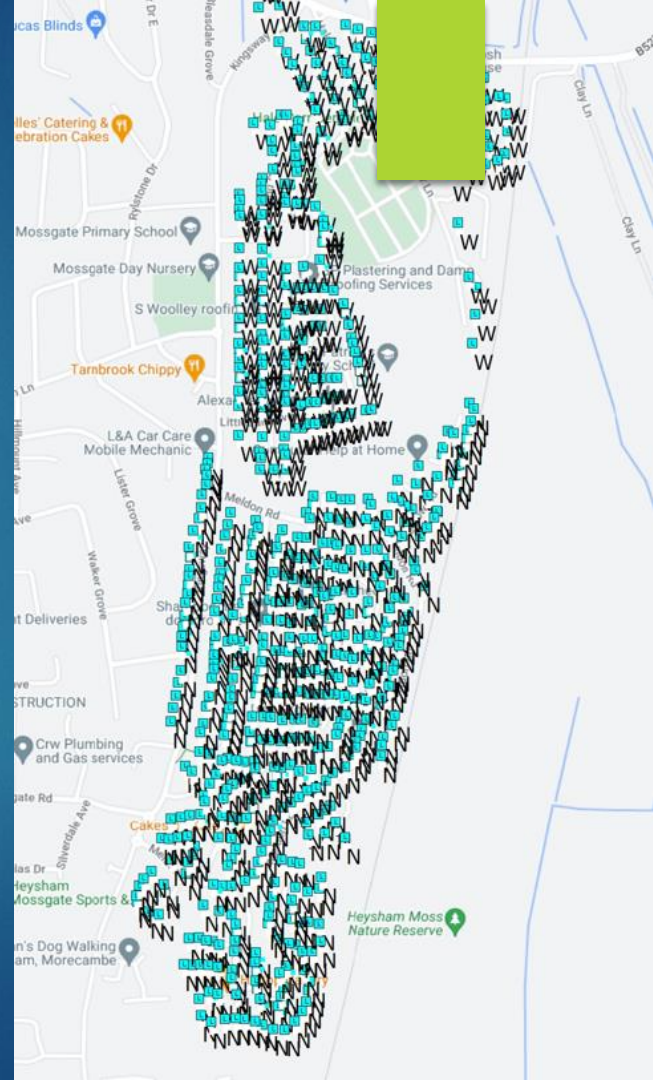
Agenda

- ▶ **Challenges and Opportunities:** Exploring the dual nature of waste management obstacles while recognizing potential pathways for impactful interventions.
- ▶ **Behaviour Change Strategies:** Developing targeted initiatives designed to influence resident habits towards proactive waste reduction and recycling efforts.
- ▶ **Support Systems for Reforms:** Identifying essential resources and frameworks required to implement successful reforms in waste service efficiency.



Dealing with Challenges and Opportunities

- ▶ **Managing Collection Cycle Uncertainties:** New recycling expectations complicate management, especially with irregular collection cycles impacting compliance and community behavior.
- ▶ **Capacity Challenges in Bin Sizes:** Transition from larger 240L bins to 180L raises concerns about space, efficiency, and meeting increased recycling demands.
- ▶ **Scenario Modeling for Waste Operations:** Projecting food waste collection methods and vehicle fleet configurations aids in optimizing resource allocation and service efficiency.



Encouraging Residents' Behaviour Change

Behavioral Change Importance: Encouraging residents to adopt sustainable behaviors is essential for successful waste reduction and recycling initiatives.

Targeted Communication Strategies: Utilizing tailored communication approaches based on LSOA can enhance message effectiveness, increasing community participation rates.

Windermere Park Trial Insights: The Windermere Park trial combines 240L recycling bins with education programs, fostering informed waste management practices among residents.

Support Provision for Reforms



Partnership with Lancashire County: Collaborating with Lancashire County enables development of standardized metrics and cost models for waste management.



Benchmarking Best Practices: Assessing Lancaster's performance relative to leading authorities identifies cooperative improvement opportunities through effective benchmarks.



Enhancing Efficiency through Reforms: Implementing targeted reforms in waste services can ensure operational efficiencies, enhancing overall community recycling outcomes.

Collaborative Efforts & Benchmarking

- ▶ **WRAP Collaborative Modeling:** Engaging with WRAP can facilitate modelling diverse collection methods to assess their financial implications effectively.
- ▶ **Synergies with Neighbouring Authorities:** Identifying operational synergies with other local authorities can foster best practise sharing and enhance service capabilities.
- ▶ **Exploration of Joint Initiatives:** Discussing potential joint initiatives could lead to improved waste collection systems through collaborative frameworks and practices.

Benchmarking Review

...s were selected as comparative authorities

	Number of Households Served	Recycling rank	Recycling Rate	6 Core Materials	Paper	Cardboard	Cans
	63,290	7	36%	144.6	28.55	38.79	9.4
onal	97,932	5	44%	191.5	40.1	54.5	11.1
sh	54,010	6	39%	170.6	23.2	29.1	14.1
	57,240	3	46%	177.8	26.6	36.1	13.1
	69,940	4	45%	168.7	23.2	31.5	13.1
ai	83,104	2	48%	185.9	23	31.2	15.1
	54,632	1	54%	168.2	26.2	35.6	11.1
	96,173	8	32%	159.5	11.6	53.3	11.1
	190,600	9	26%	85.3	28.6	38.9	8.1