



Transforming Travel

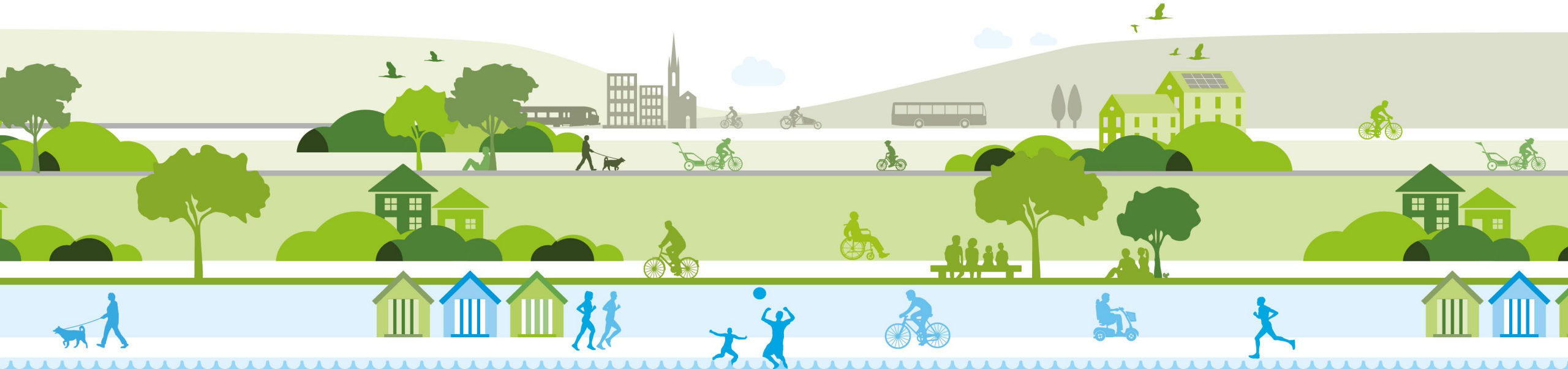
greener | healthier | better connected

SED Region TCF Programme APSE Presentation

16th June 2022

Gary Powell – Head of Engineering, BCP Council

Marc Griffin – SED TCF Programme Manager



 **INDUSTRIAL
STRATEGY**
TRANSFORMING CITIES FUND

Improving productivity and spreading prosperity through investment in public and sustainable transport

Working in
partnership

 **Public Health
Dorset**

 **Department
for Transport**

South East Dorset
(SED) City Region

 **Dorset
Council**

 **BCP
Council**



greener | healthier | better connected

Overview of SED TCF Programme The Background

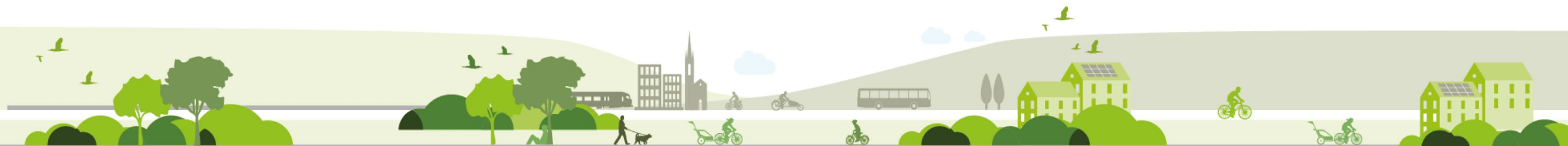
Delivering on the Industrial Strategy

As part of the Autumn Budget 2017, the government announced the creation of the £1.7bn Transforming Cities Fund ('the Fund'), with the aim of driving up productivity and spread prosperity through investment in public and sustainable transport in some of the largest English city regions.

The Fund is focused on intra-city connectivity, making it quicker and easier for people to get around – and access jobs in – some of England's biggest cities.

The Fund also supports the Future of Mobility Grand Challenge, one of four Grand Challenges established in the government's Industrial Strategy - to improve people's lives and the country's productivity and put the UK at the forefront of the industries of the future.

It will help city regions harness the opportunities presented by extraordinary innovation in engineering, technology and business models to tackle their connectivity challenges.

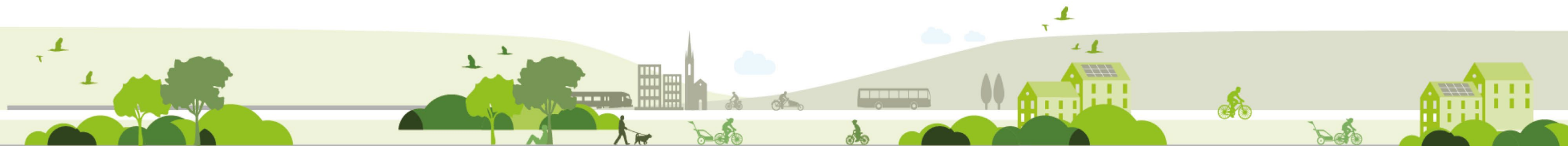




greener | healthier | better connected

Overview of SED TCF Programme The Vision

“To create an environment where sustainable travel becomes the obvious transport choice for local journeys – enabling safer journeys to schools, building fairer and easier access to jobs, businesses and activities, tackling inequality – enabling growth and prosperity in the SE Dorset region as part of our action plan to address the climate and ecological emergency”





Overview of SED TCF Programme

greener | healthier | better connected

Funding Awarded



Simon Connick
Deputy Director of North and Devolution
Department for Transport
Great Minister House
33 Horseley Rd
Westminster
SW1P 4QR
PA Direct Line: 020 7044 2252
Email: TCFenquiries@dtf.gov.uk
Website: www.gov.uk/ft

Julian McLaughlin
Planning & Transport
Bournemouth Christchurch and Poole Council
Town Hall Annex
St. Stephens Road
Bournemouth BH2 5EA

By email:
julian.mclaughlin@bcpcouncil.gov.uk

20 March 2020

Dear Julian

TRANSFORMING CITIES FUND PACKAGE: TRANCHE 2 ALLOCATION

Following the submission of your final Strategic Outline Business Case I am pleased to say that Ministers are now content to release funding for your low package and have approved the detail of the funding agreement as set out below.

As announced at Budget 2020, your city region will be receiving £79 million in capital grant funding to be paid over four years from 2019-20 to 2022-23. The funding is for public transport improvements in the South East Dorset city region as outlined in your Strategic Outline Business Case and the terms under which the funding is granted are as follows:

1. Funding will be granted according to the following profile, unless amended under paragraph 10 below.

2019/20	2020/21	2021/22	2022/23	TOTAL
£3,955,973	£10,019,544	£30,876,142	£34,451,275	£79,302,934

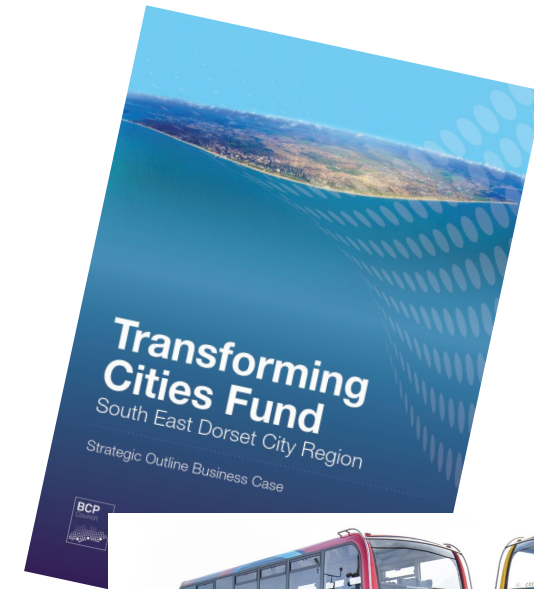
The first grant will be paid as a section 31 grant under the Local Government Act 2003 on 31 March 2020.

2. Funding is granted on the assumption that the local authority/private contributions are at least as stated in the bid.
3. Bournemouth Christchurch and Poole Council ("BCP Council") is responsible for ensuring any schemes funded represent Value for Money for the taxpayer, and DfT will not cover any funding shortfalls.
4. BCP Council will provide a final version of its Assurance Framework by 20 April 2020. Investment decisions on individual components of the package will be made locally in accordance with the BCP Council Assurance Framework which must be compliant with the requirements of the National Local Growth Assurance Framework guidance¹ or any successor document. However:

¹ https://assets.publishing.service.gov.uk/government/uploads/system/uploads/attachment_data/file/768356/national_Local_Growth_Assurance_Framework.pdf

£79m awarded to BCP & DC from the Transforming Cities Fund!!

With local contributions total programme value of approximately **£102m** over 3 years.

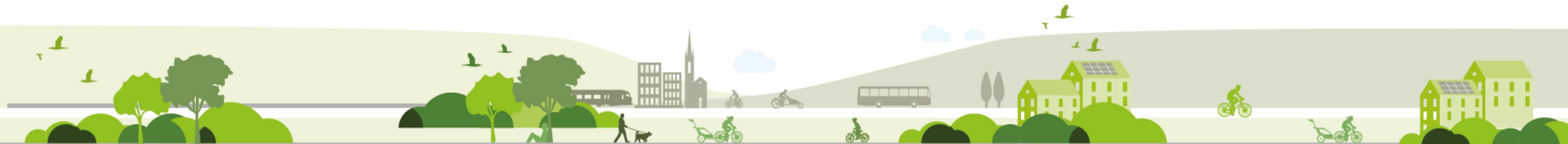




Transforming Travel

TCF Objectives

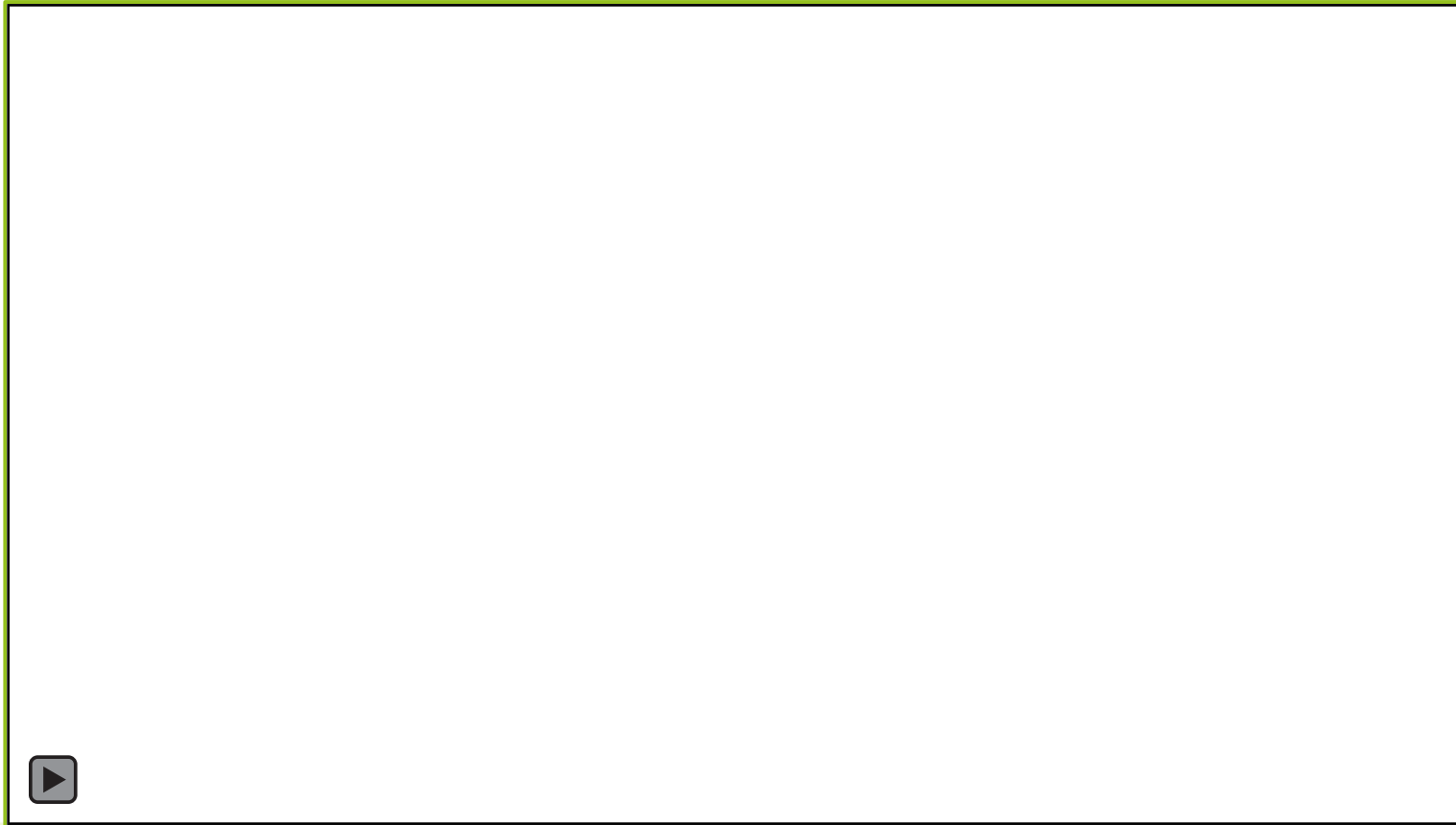
- Broadening travel options to encourage more:
 - Walking
 - Cycling
 - Public transport use
- Improving access to work, increasing productivity and delivering growth
- Expanding smart ticketing technology to simplify changes between travel modes
- Delivering apprenticeships and improving skills
- Enabling delivery of more homes
- Tackling air pollution and reducing emissions
- Aligning with new Government policies around active travel





greener | healthier | better connected

Overview of SED TCF Programme Video



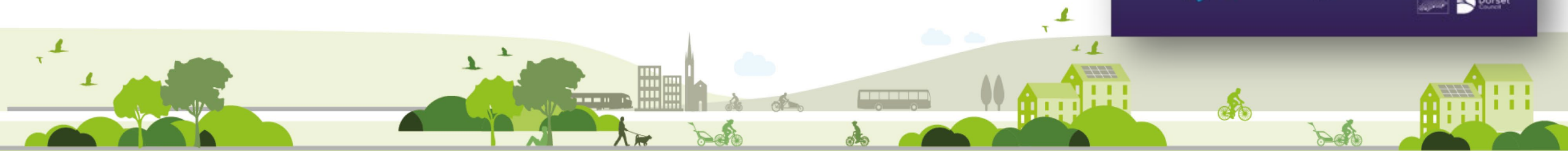
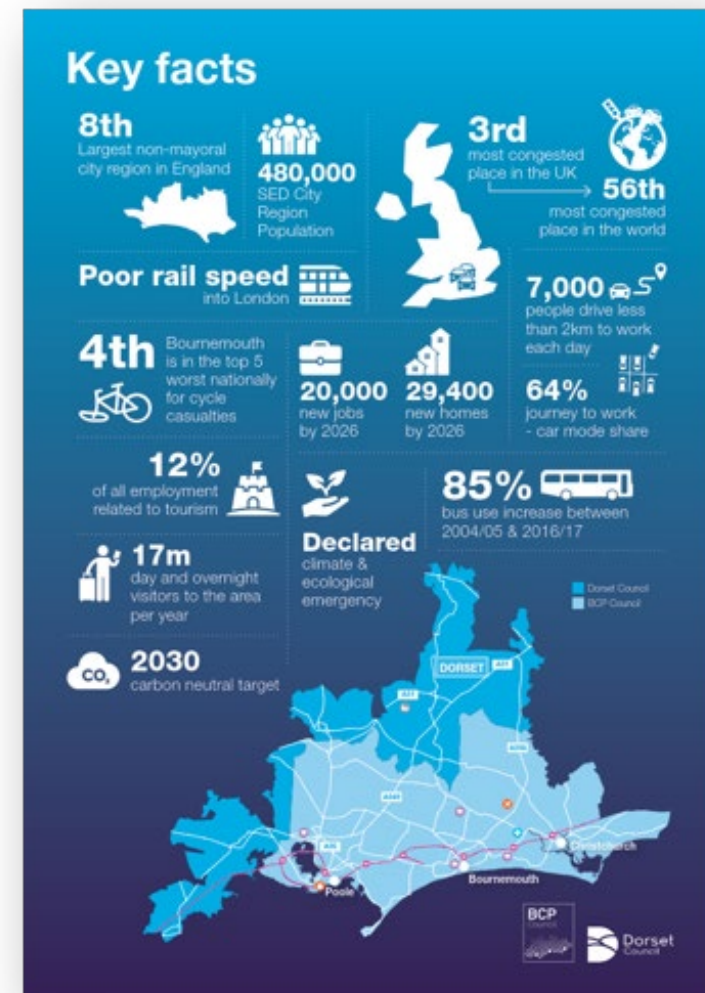


Transforming Travel

The TCF Objectives will address key issues:

- Bournemouth is the 3rd most congested city region in UK
- 56% of BCP Council residents drive five or more days a week
- Bournemouth 4th worst and Poole 13th worst Local Highway Authority for road cycling casualties 2012 to 2016
- Traffic volumes increased by approximately 4% from 2011 to 2018, whilst at the same time peak hour motor vehicle journey times increased by approximately 20% over the same period
- East Dorset has the highest car ownership levels in England and Wales
- 15% of travel to work journeys by car in the conurbation are less than 2km
- Journey times for buses between centres are too long making their use less attractive

50%
of trips to work
which are under
5km are
completed by car





Transforming Travel

2x Sustainable Transport connectivity corridors –

Improvements to bus, cycle and walking infrastructure (encompassing improvements to junctions, bus priority, link between corridors, bus stop and infrastructure upgrade, improved crossings) and connecting residents to jobs and schools.

4x Cycleways – Improvements to cycle and walking infrastructure and facilities.

Overview of SED TCF Programme

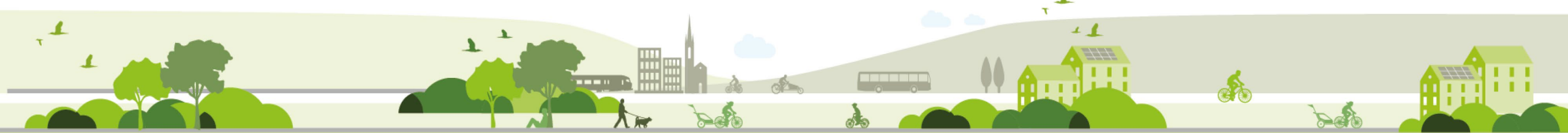
greener | healthier | better connected



A range of cycle, walking and bus improvements

- Bournemouth railway station to/from Jumpers Common, Christchurch
- Bournemouth town centre to/from Ferndown
- Poole town centre to/from Wareham Road, Holton Heath
- Poole town centre to/from Merley, Poole
- Poole town centre to/from Ferndown and Wimborne
- Merley, Poole to/from Christchurch

Railway
 Road
 Urban area
 Other schemes (existing/to be delivered)





Overview of SED TCF Programme

greener | healthier | better connected

Transforming Travel

How will we Transform Travel?

Bus:

- New shelters, real time passenger information, improvements to improve journey times and reliability

Transport Hubs:

- Wayfinding – improved and easier to understand information, journey time, bike share locations
- Providing easier interchange between transport modes.

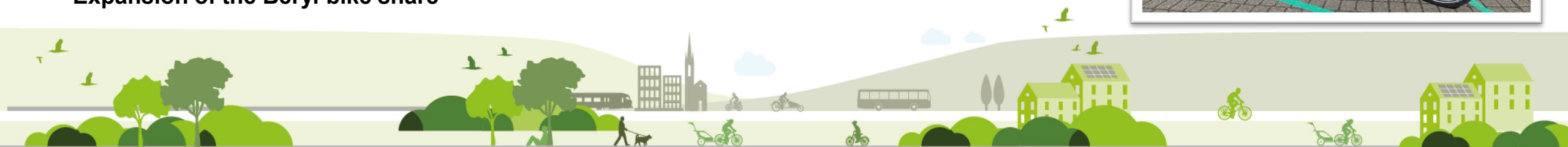
Network Management:

- Bus Priority with Signals; and
- HGV Management System - Longham Bridge

Trip end facilities grant scheme:

- Focus funding on employers & schools in the TCF area that genuinely want to promote walking, cycling and public transport options to their employees
- Applications have been received and over 20 schools have been awarded circa £250k

Expansion of the Beryl bike share



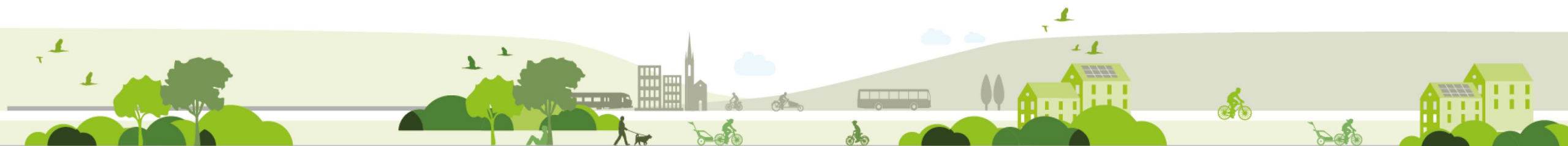
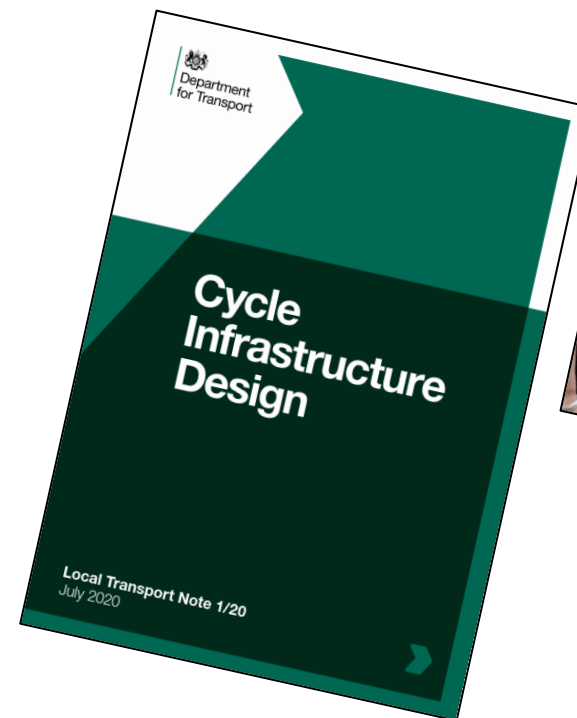


Complying with Gear Change and LTN 1/20 Standards

greener | healthier | better connected

Transforming Travel

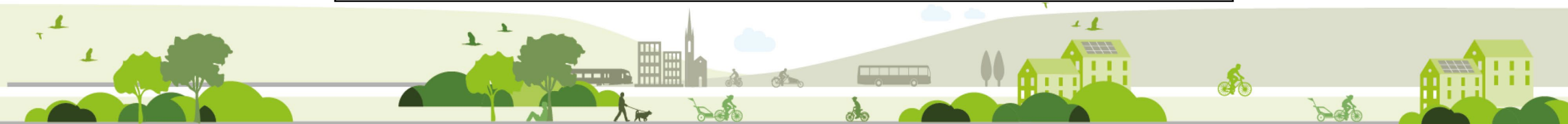
- Release of Documents in July 2020
- Time of increased uptake in cycling
- A Bold Vision for a New Era
- Key Themes:
 - Better streets for cycling and people.
 - Cycling at the heart of decision-making.
 - Empowering and encouraging Local Authorities.
 - Enabling people to cycle and protecting them when they do.





greener | healthier | better connected

Update on delivery so far... Video





Update on delivery so far...

greener | healthier | better connected

Transforming Travel

- **Whitelegg Way:** commenced 17/05/21
 - Phase 2 Complete
- **Upper Gardens:** commenced 24/05/21
 - Complete February 2022
- **Kings Park -** commenced 26/07/21
 - Completed Phase 1 works- Harewood Avenue
 - Commenced phase 2 November 21- due to complete on September 2022
 - Phase 3 estimated to start Summer 2022 to Winter 2022
- **Fernside/ St Marys Junction** – commenced February
- **Wimborne Road West and East** – March
- **Wimborne Road commenced 16/05/22**
 - [Video](#)





Transforming Travel

Update on delivery so far...

greener | healthier | better connected

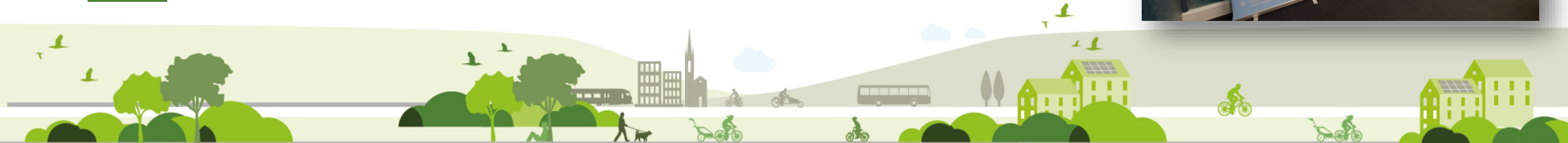
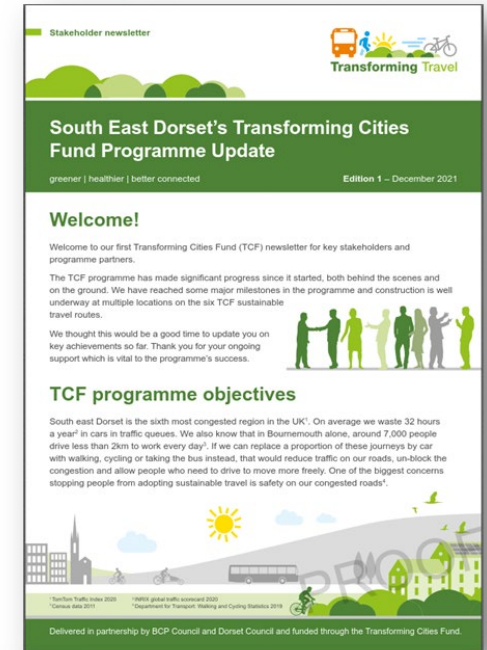
- **Leigh Road:** commenced 18/01/21
 - Completed February 2022
- **Queen Anne Drive – Magna Rd:** commenced 09/08/21
 - Phase 1 complete
 - Phase 2 estimated to be completed end of May
 - Phase 3- start date tbc
- **Twinsails Bridge to Hamworthy:** commenced 16/08/21
 - Rigler Road- phase 2 commenced 16/05/22
- **Ringwood Road-** commenced 01/11/21
 - Between Longham Mini Roundabout and south of Church Road





Transforming Travel

- Local communications (frontage letters, social media, newsletter features, media relations, videos)
 - Social Media Channels:
- Media opportunities: completion of TCF sustainable travel schemes
- Local information / consultation events for select schemes
- Travel habits survey
- Blogs
- Public Awareness Questionnaire launched 18/03/22- 02/05/22 (repeat of the start of TCF)
- Stakeholder Newsletters
- Videos





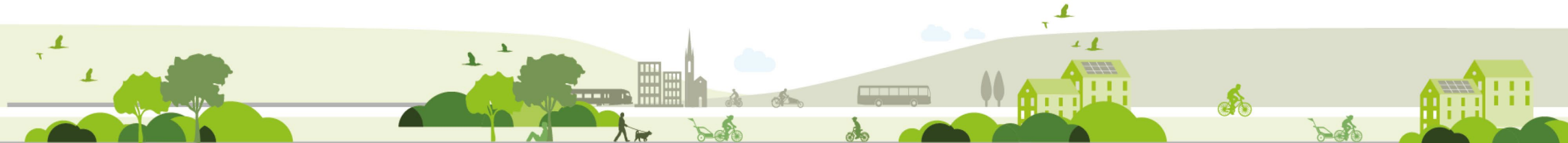
Transforming Travel

a) Material Supply

- Resources (overlaps with EATF/LTP and other TCF Regions), availability of materials and delays to orders- Covid-19 global supply issues; and
- Increases in cost of materials from SOBC- inflation.

b) Programme

- Procurement – seeking options to “speed up” design to construction process;
- Planning applications and land acquisitions;
- Increased construction times and increased costs;
- Track possession lead in times and possible delays; and





Transforming Travel

Key Challenges at present

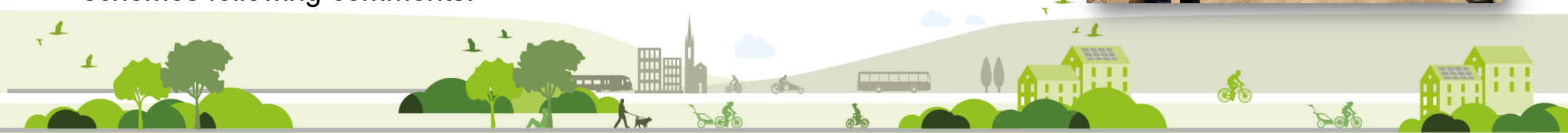
greener | healthier | better connected

c) Messaging

- Emergency Services;
- LTN 1/20;
- Highway Code update; and
- National Messaging – Acceptance from public.

d) Wider Engagement Schedule

- Ward Members and Town and Parish Councils;
- Bus Operators and Stakeholders; and
- Engagement on contentious schemes and changes to previous schemes following comments.





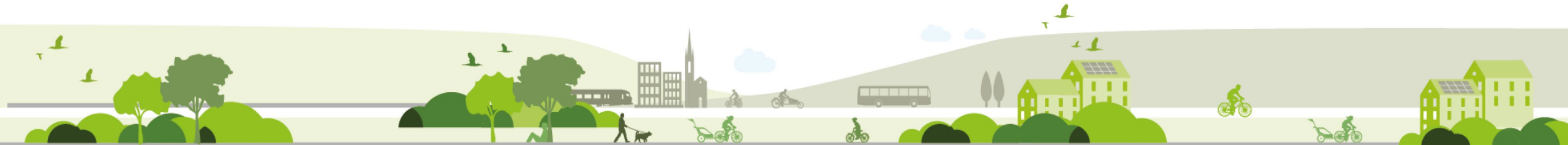
Outcomes

Transforming Travel

Delivery of this programme alongside other locally led proposals including BCP Council's Strategic Parking Review and respective Climate Change Emergency Action Plans for both Councils will result in significant steps towards the transport related issues being tackled.

The outputs will be:

- Increased productivity
- Better intra-urban connectivity
- Reduced congestion
- Fewer road related injuries and deaths
- Enhanced travel choice
- Significant investment from private sector transport operators
- Improved health and wellbeing for the population
- Reduced carbon emissions leading to better air quality





greener | healthier | better connected

Outcomes - Monitoring and Evaluation Plan

Transforming Travel

A monitoring and evaluation plan has been produced to ensure the outcomes are met.

Measures:

- Delivered Scheme
- Costs
- Construction Programme
- Reducing carbon emissions
- Air Quality Improvements
- Delivering wider social and economic benefits

Stages of M&E:

- Stage 1 - Pre-Construction Study
- Stage 2 - One Year Post Opening Process Evaluation
- Stage 3 - Five Year Post Opening Impact Evaluation

Data:

- Traffic Count Data
 - Traffic Count using AI sensors
 - ATCs
 - MCCs
- Bus Surveys
 - Origin-Destination
 - Journey Time
 - Reliability of Service
- Air Quality Monitoring
- Beryl Bike Usage Data
- Public Satisfaction Surveys
- Business / School Data
- Other Secondary Sources (some examples below)
 - Census/Mosaic
 - WSP Lattice data
 - DfT data
 - Public Health England





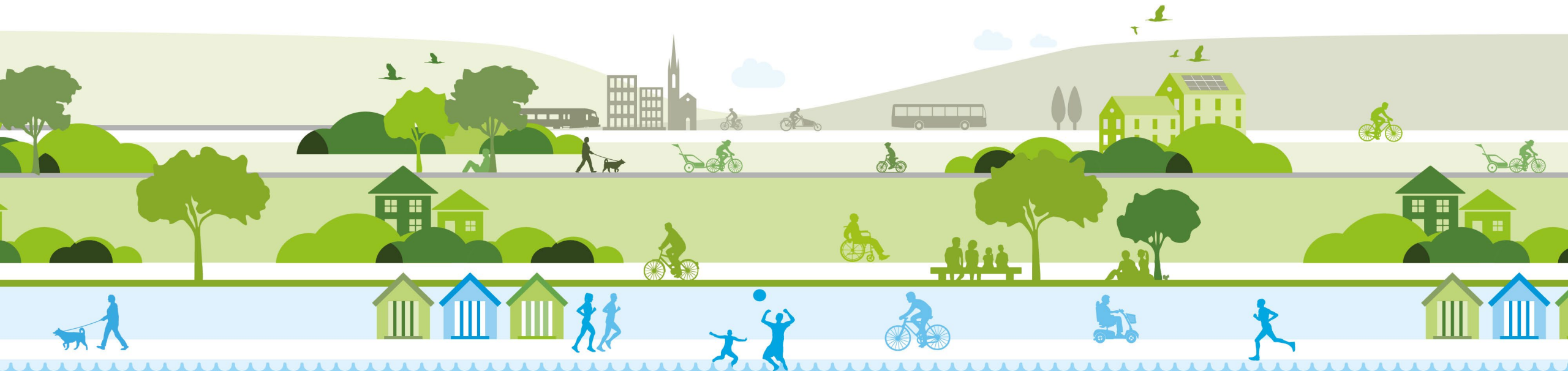
Transforming Travel

greener | healthier | better connected

See how you could transform your travel

Find out more at

transformingtravel.info



 **INDUSTRIAL STRATEGY**
TRANSFORMING CITIES FUND

Improving productivity and spreading prosperity through investment in public and sustainable transport

Working in partnership



South East Dorset (SED) City Region

