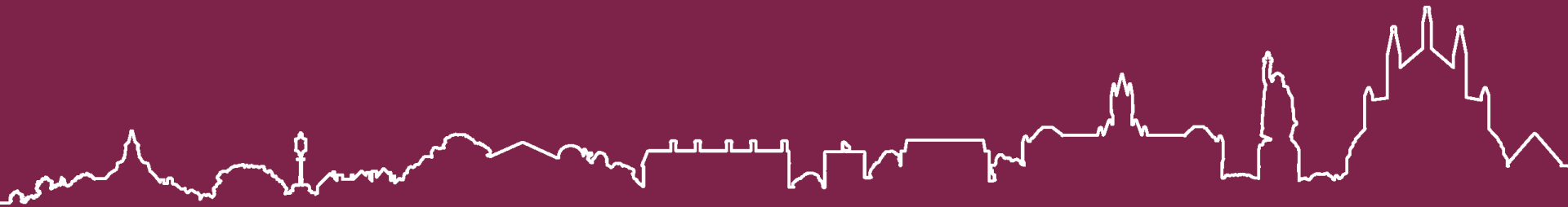


# How much of a priority is Climate Change at Winchester City Council?

Anna Wyse B.Eng. M.Sc.(Eng) PGDip, AIEMA  
Sustainability Officer





Cabinet Member for  
the Climate Emergency:  
Cllr Kelsie Learney

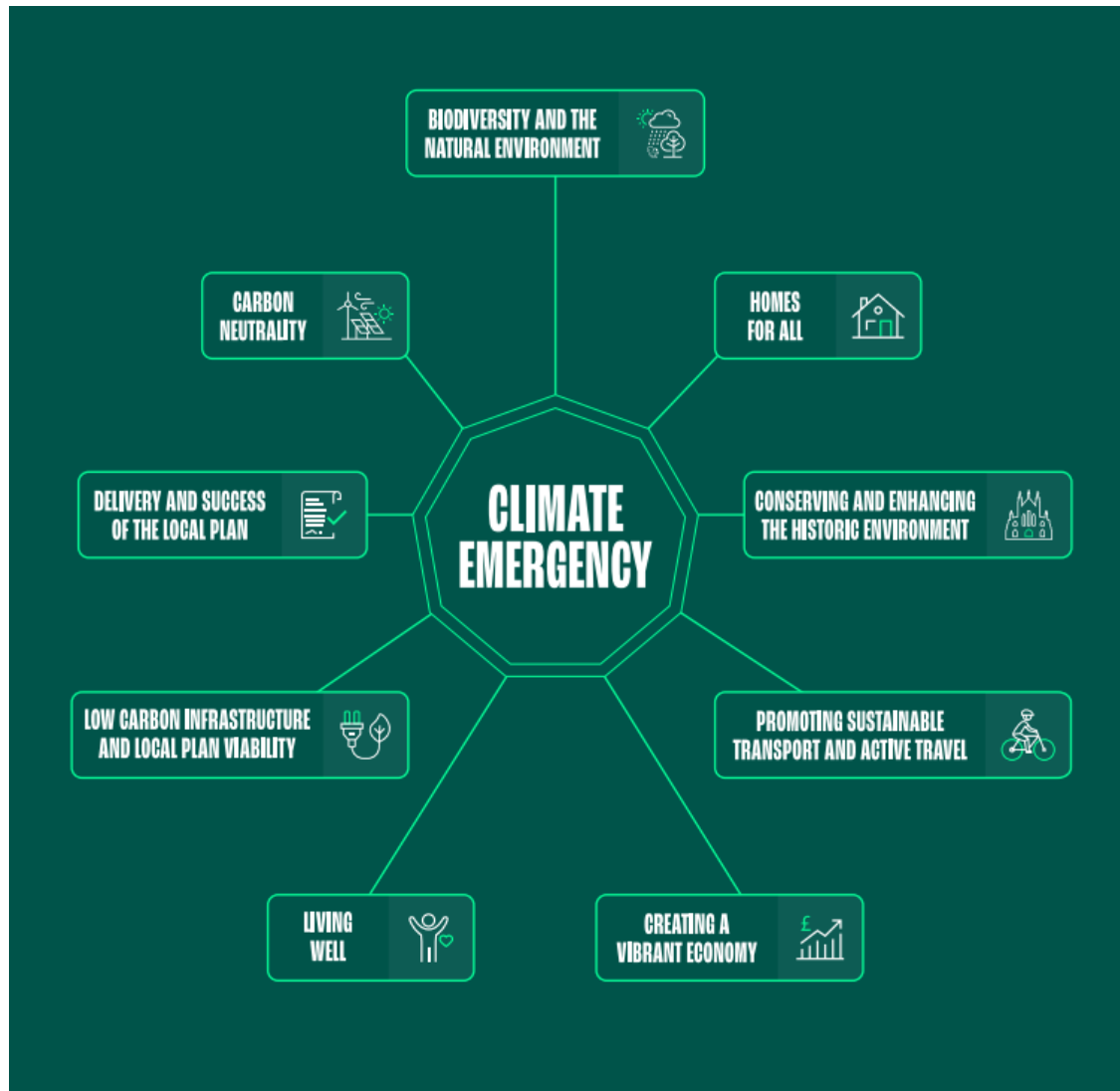


**'The climate crisis is the biggest challenge all of us face in the coming years and decades. Winchester must play its part in tackling the crisis and hand our district to our children and grandchildren in a better state than it is now.'**

WINCHESTER CITY COUNCIL  
COUNCIL PLAN 2020-2025



# At the heart of the Local Plan



## Strategic Issues and Priorities Consultation 2021

# CARBON NEUTRALITY TARGETS

## Winchester Carbon Neutrality Plan

The council to be carbon neutral by 2024

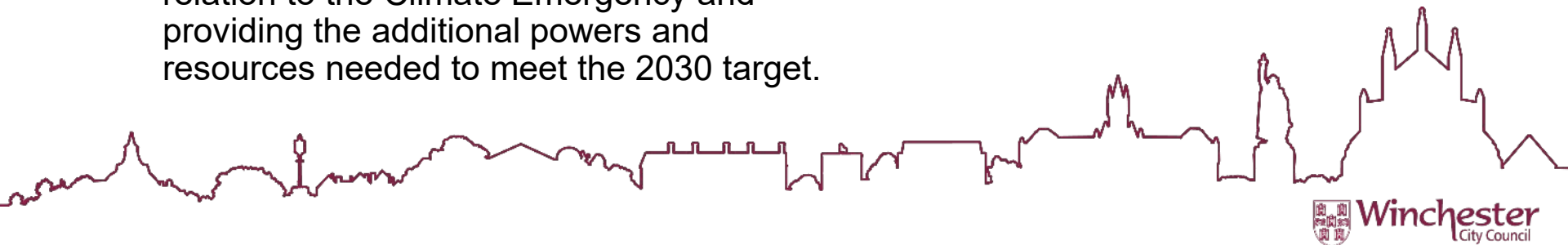
The district to be carbon neutral by 2030





# DECLARATION OF CLIMATE EMERGENCY 2019

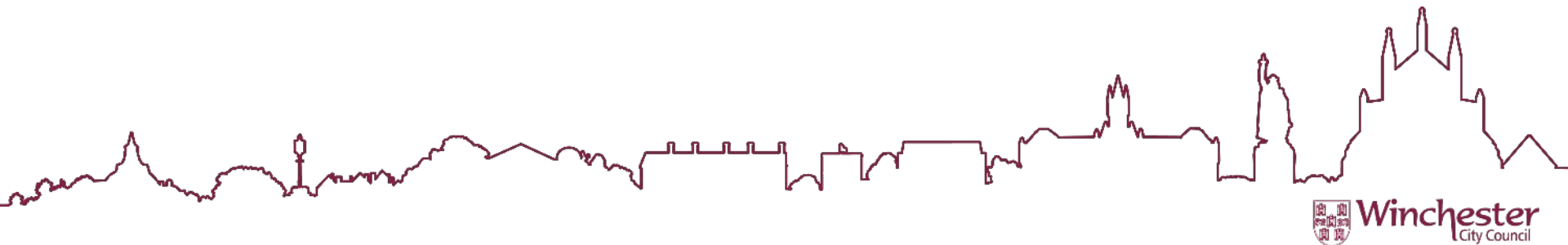
- Commit to making the activities of Winchester City Council carbon neutral by 2024, and the district of Winchester carbon neutral by 2030, taking into account both production and consumption emissions;
- Publish a report within six months setting out the immediate actions the council will take to address this emergency and a plan to measure annual district progress towards meeting the 2030 target;
- Work with partners across the district to deliver this new goal through all relevant strategies and plans and drawing on local and global best practice;
- Support the lobbying of Government in relation to the Climate Emergency and providing the additional powers and resources needed to meet the 2030 target.



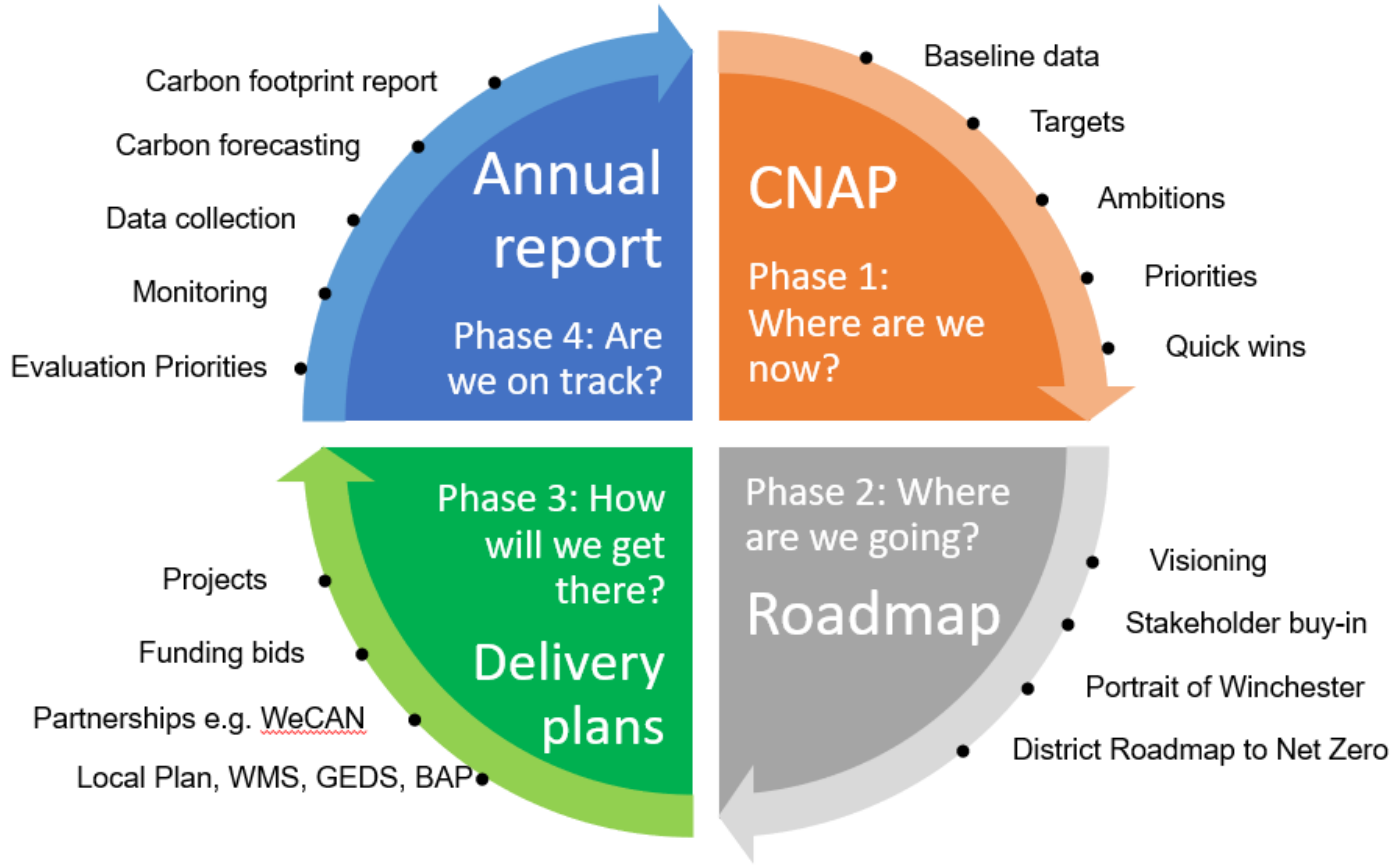
# CARBON NEUTRALITY ACTION PLAN (CNAP)

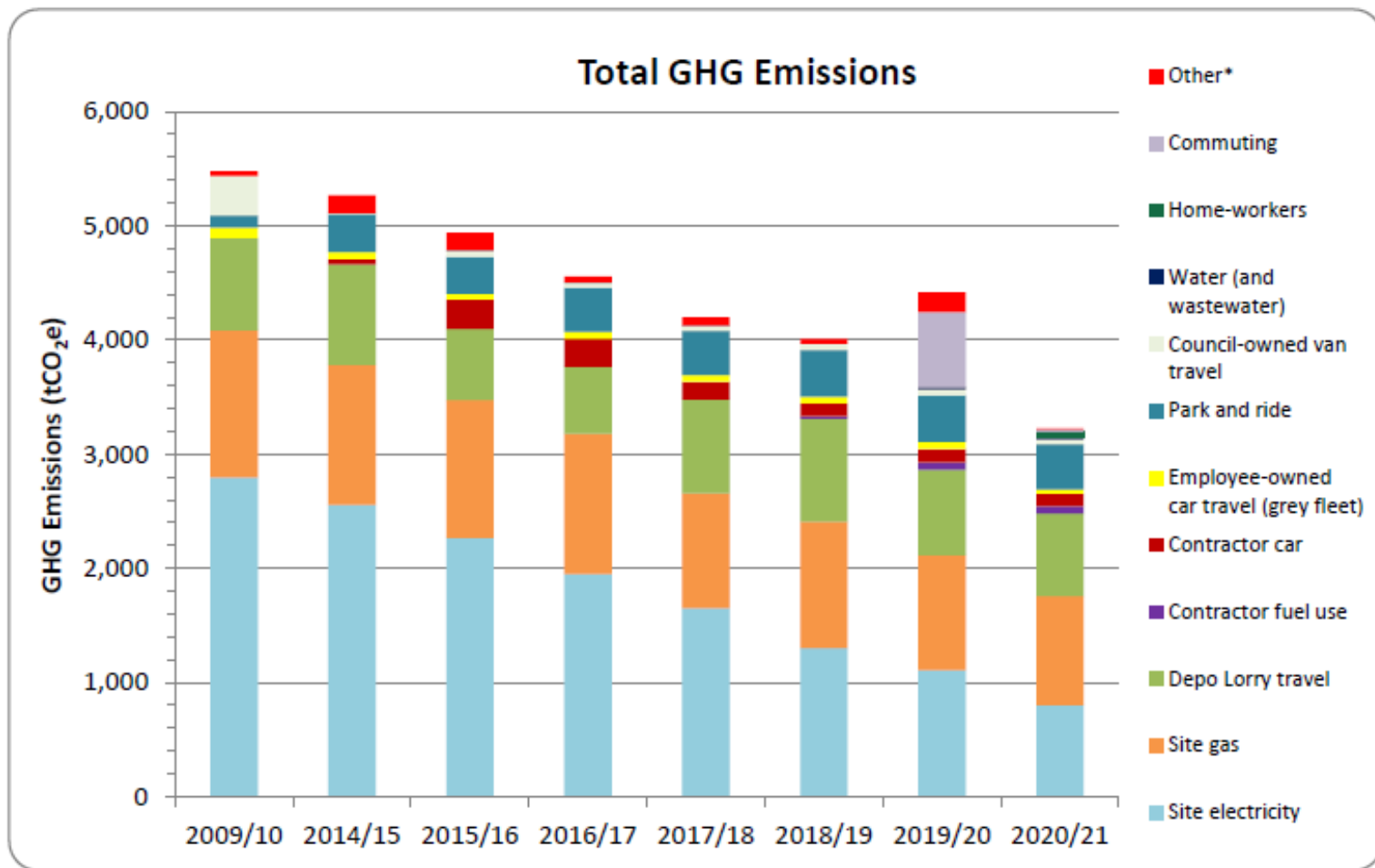
## Priority Action Areas

- Transport
- Property / Housing
- Energy
- Mitigation / Offsetting
- Biodiversity
- Recycling and Waste
- Planning and Development
- Commerce and Economy



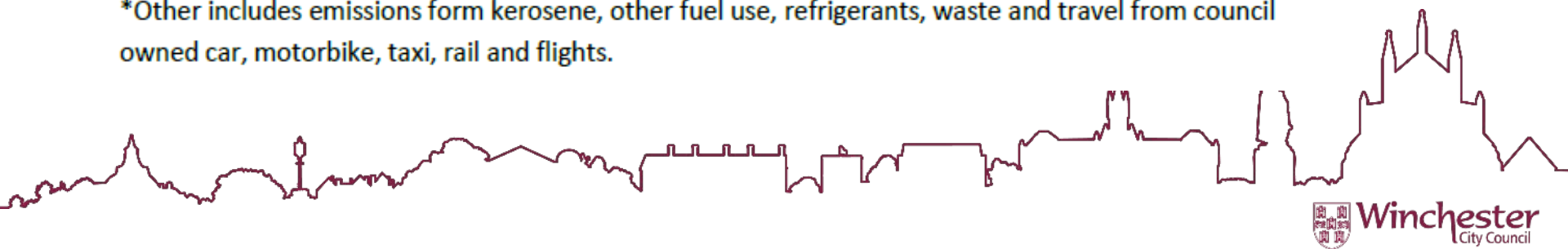
# CNAP PROCESS





*Figure 7: Detailed emissions comparison for the various aspects of Winchester City Council's location-based emissions*

\*Other includes emissions from kerosene, other fuel use, refrigerants, waste and travel from council owned car, motorbike, taxi, rail and flights.





# WCC CARBON FOOTPRINT

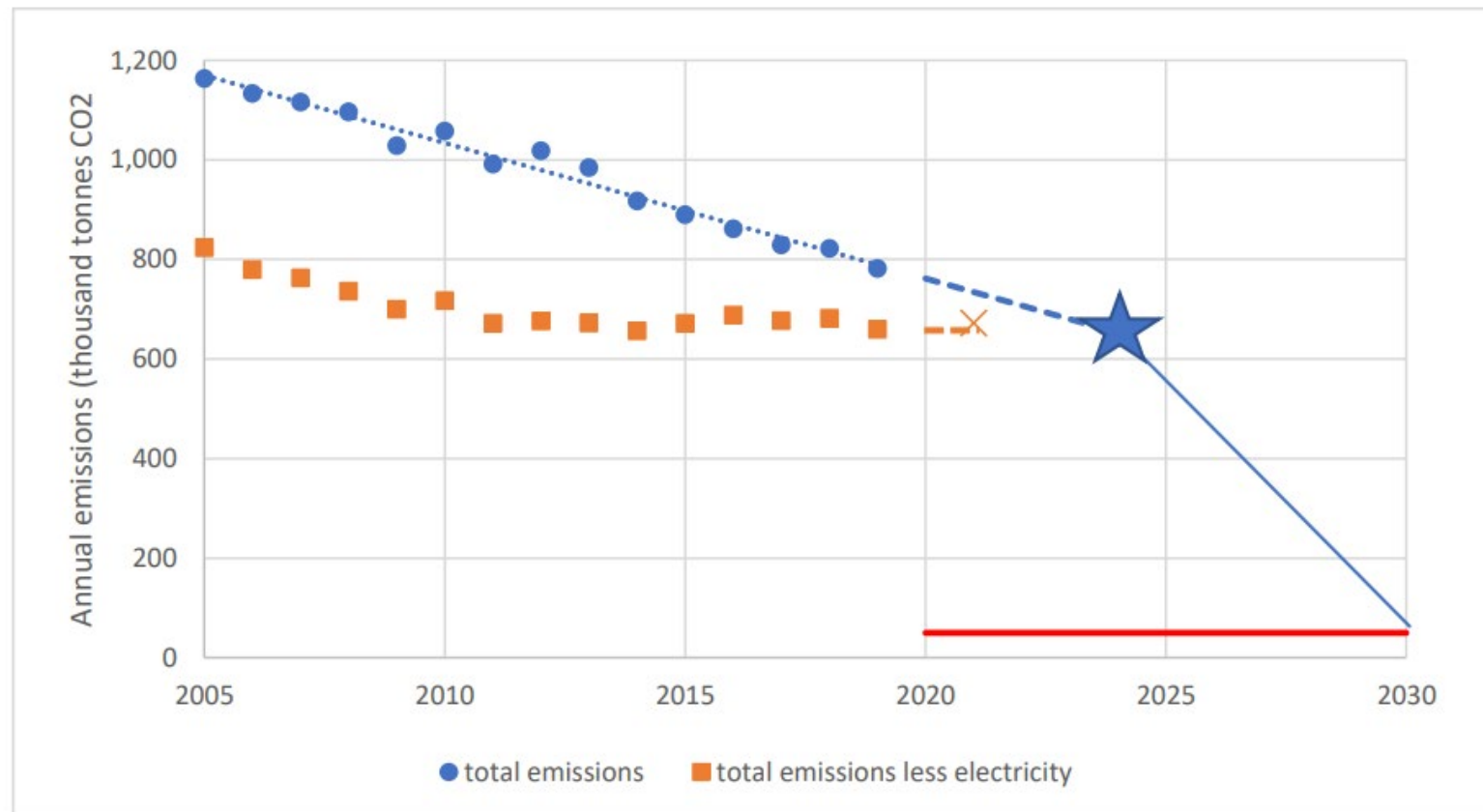
Our total location-based emissions for 2020-21 were **3,227 tCO<sub>2</sub>e**  
and the total market-based emissions were **2,810 tCO<sub>2</sub>**

All emissions	2020/21 tCO <sub>2</sub> e (Location based)	2020/21 tCO <sub>2</sub> e (market based)	% Share of total emissions (market)
Transport	1315	1315	47%
Domestic Housing	605	593	21%
Commercial Energy	1156	867	31%
Employee commuting	19.2	19.2	1%
Refrigerants	0	0	0%
Water & waste	15.5	15.5	1%
Other	0	0	0%
<b>Total</b>	<b>3227</b>	<b>2810</b>	<b>100.00%</b>

# DISTRICT CARBON FOOTPRINT

Estimated annual direct emissions of carbon dioxide from Winchester District in 2019 were **782 ktCO<sub>2</sub>**.

31% reduction from the comparable 2005 figure of **1134 ktCO<sub>2</sub>**



# CLIMATE EMERGENCY DECLARATION - FIRST ANNIVERSARY



**500 +**  
TREES PLANTED

**WILDFLOWER**  
AREAS CREATED

**849 M<sup>2</sup>**   
**SOLAR PANELS**  
BEING INSTALLED AT  
WINCHESTER SPORT &  
LEISURE CENTRE

PURCHASED  
**GREEN ELECTRICITY**  
CUTTING COUNCIL'S  
CO<sub>2</sub> EMISSIONS  
**BY 19%** 

Tackling the

**CLIMATE  
EMERGENCY**

 **£10M**  
TO CUT CO<sub>2</sub> IN  
COUNCIL HOUSING

A CARBON NEUTRAL  
COUNCIL   
**2024**

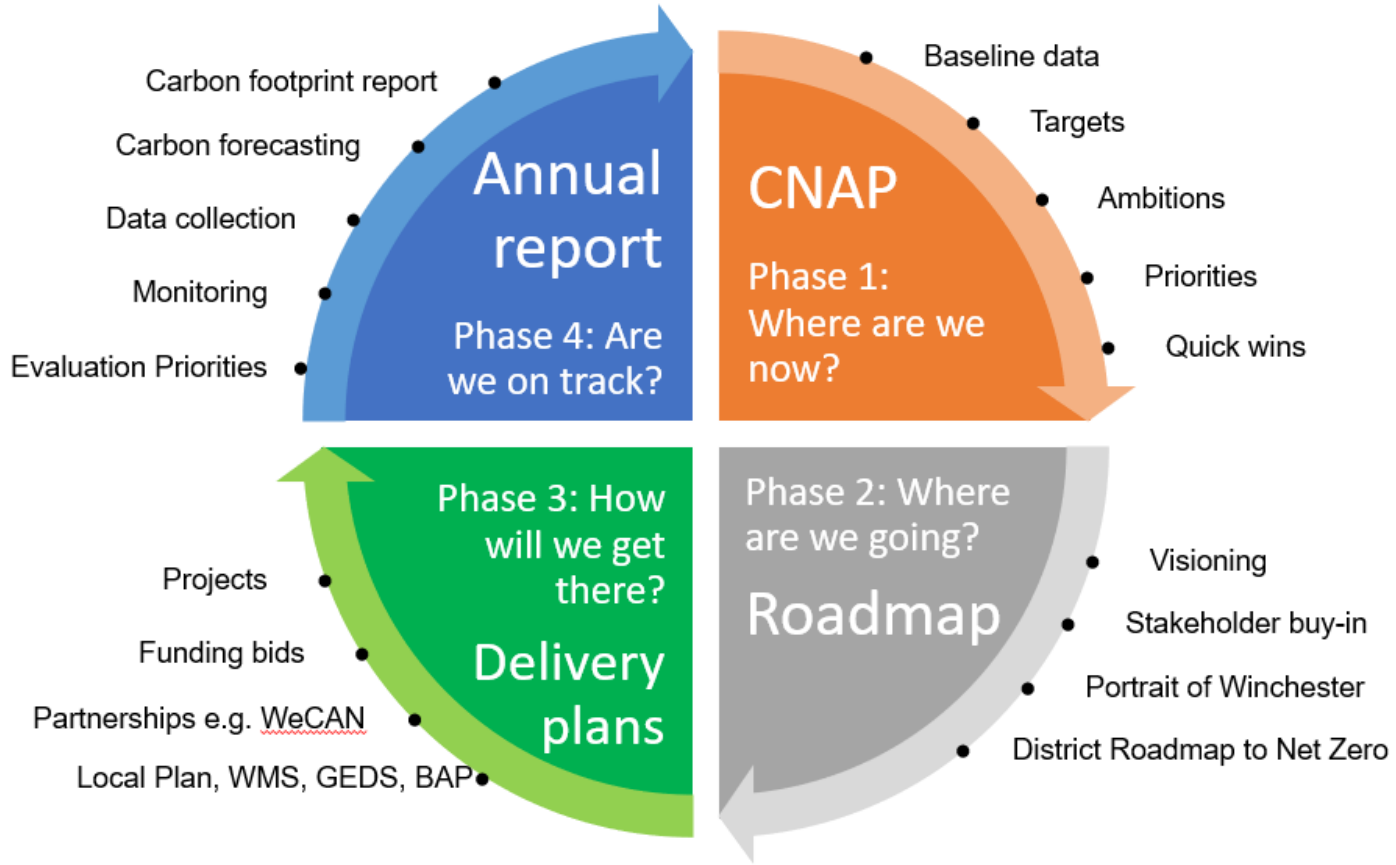
PLANS FOR  
**ELECTRIC CHARGE**   
POINT NETWORK

A CARBON NEUTRAL  
DISTRICT  
**2030** 

 **Winchester**  
City Council

 **Winchester**  
City Council

# CNAP PROCESS



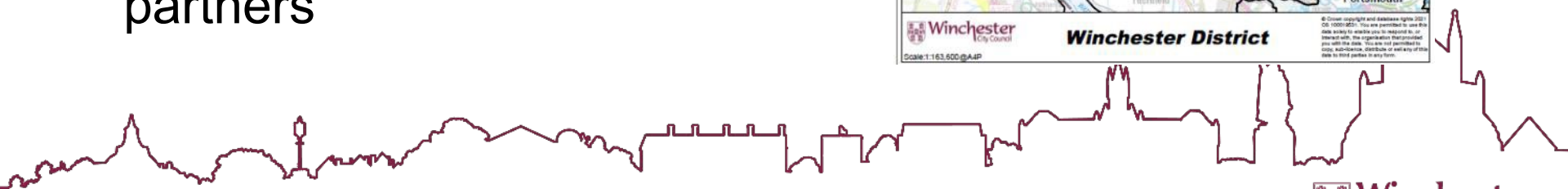
# District decarbonisation roadmap

## Objectives

Create a roadmap for Winchester District to become carbon neutral by 2030

Guide interventions and investment priorities

The roadmap tool will be updatable and freely accessible to public and partners





# DISTRICT DECARBONISATION ROADMAP

## PROJECT METHODOLOGY

### Phase 1 – Understanding, analysis and measurement

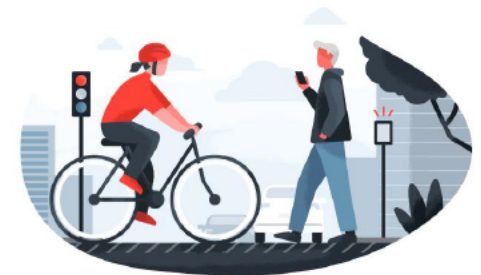


### Phase 2 & 3 – Recommendations and roadmap

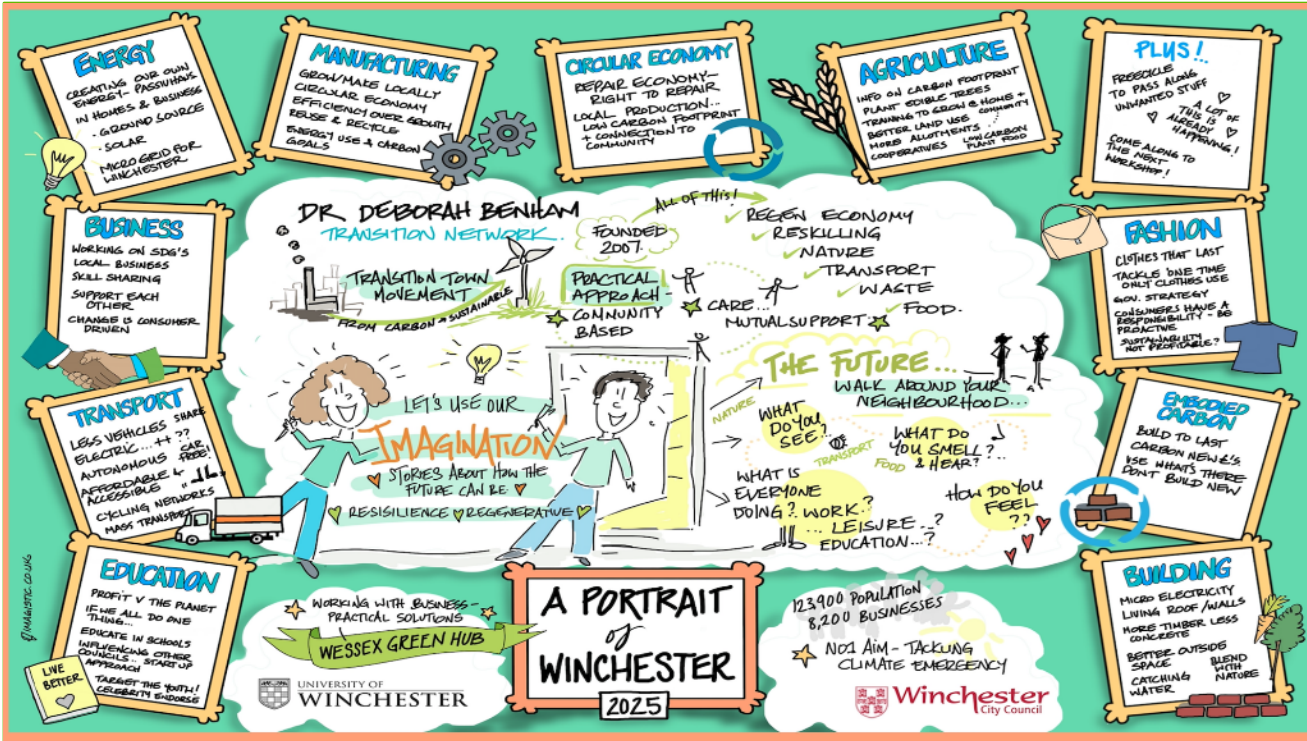


Roadmap methodology, tool and training session

All draft reports, data, tools and presentation material are completed and finalised in Power Point, Word, Excel etc



# Wessex Green Hub have run a series of 'Portrait of Winchester' workshops and drop in sessions to imagine a more regenerative future for the District




## Portrait of Winchester workshop 1 (November 2020)

- Workshop 1: Online workshop with an open invitation and around 60 local residents and stakeholders attending.
- Workshop 2 focused on identifying specific actions and initiatives
- Workshop 3 in June 2021 for elected members and officers. Provided an opportunity to imagine a flourishing future Winchester District, thriving in place for people and planet.

Source: Emma Paxton for WCC

# CARBON NEUTRALITY OPEN FORUMS



**Jun 22**



**The Energy Crisis and Climate Change**

by [Winchester City Council](#)

[Follow](#)

Free

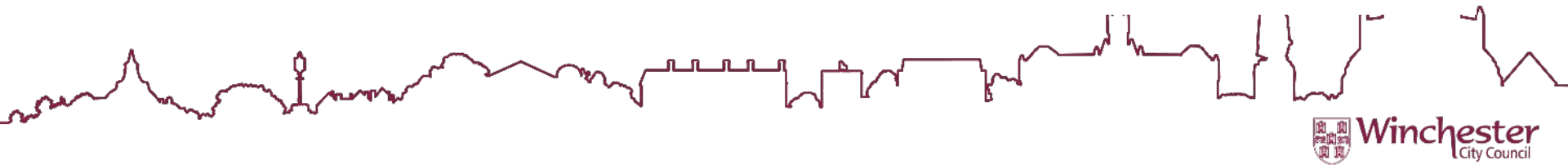
[Register](#)

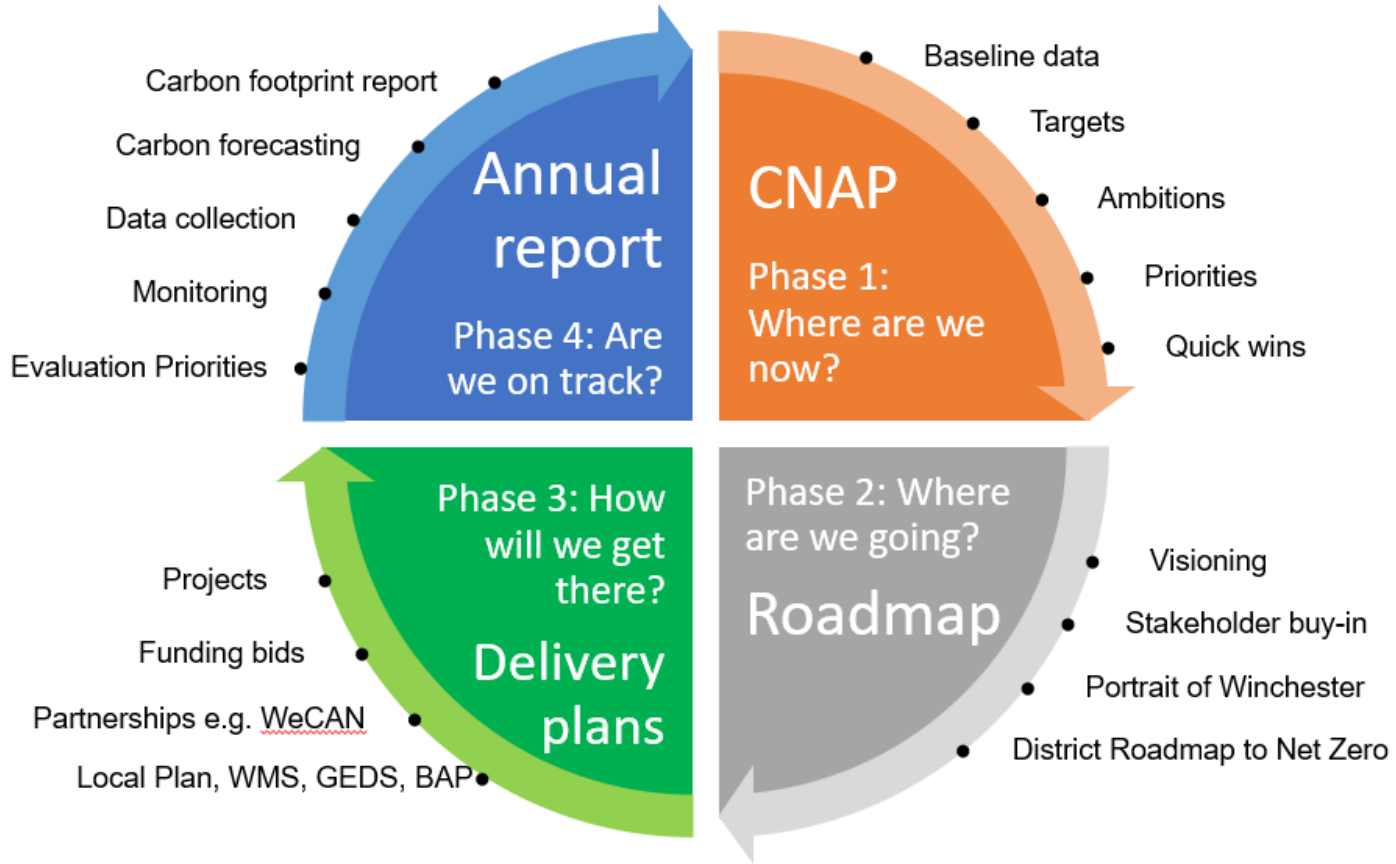
Join Winchester City Council for an open conversation on the energy crisis, fuel poverty, home retrofit and what help is available.

## Date and time

Wed, 22 June 2022  
18:30 – 20:00 BST

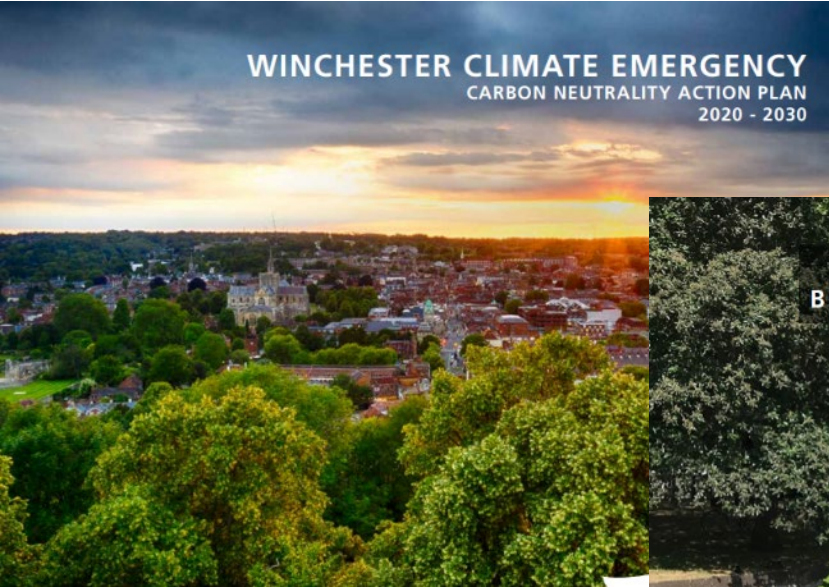


# CNAP PROCESS





# 3 STRATEGIC PRIORITIES





# GREEN ECONOMIC DEVELOPMENT STRATEGY (GEDS)

The Green Economic Development Strategy (GEDS) sets out the direction for the next ten years to bring green economic growth and transition to net zero carbon.

<https://www.winchester.gov.uk/business/economic-development>



# Local Plan: Developing evidence base

**Housing:** LETI – modelling viability of low energy housing

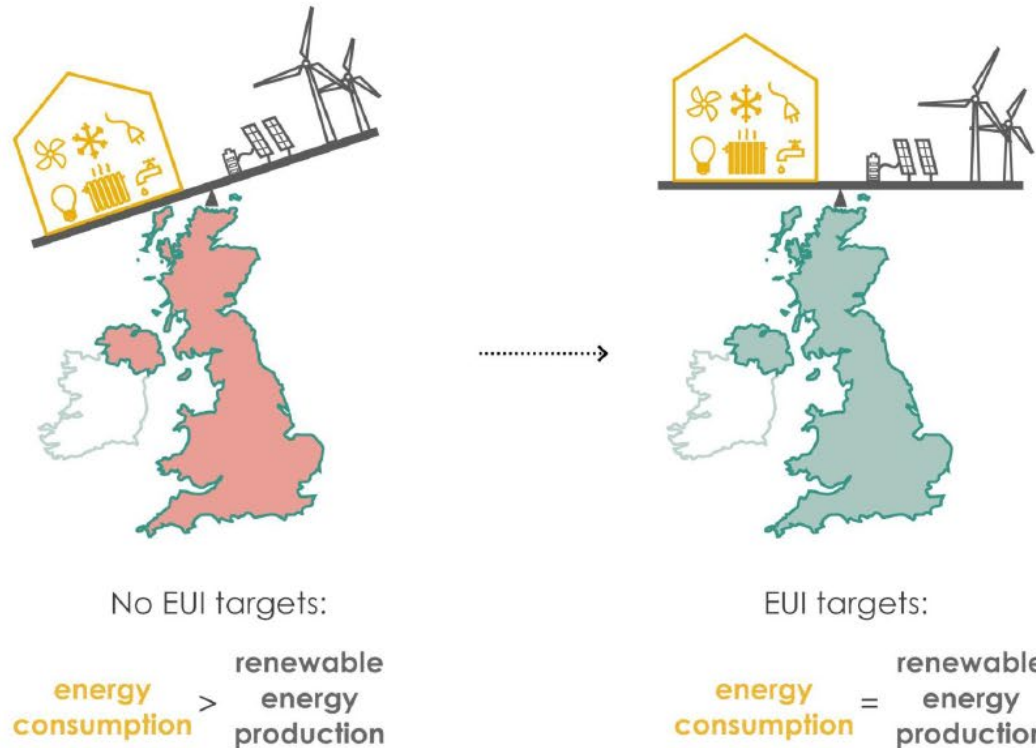
Originally ‘The London Energy Transformation Initiative’, LETI is a network of over 1000 built environment professionals that are working together to put the UK on the path to a zero carbon future.

WCC already goes further than Building Control in requiring low energy housing standards.

Delivering 3 PassivHaus Schemes and one EnerPhit

**Renewable Energy:** Geospatial analysis of SHELAA sites suitable for renewable energy development

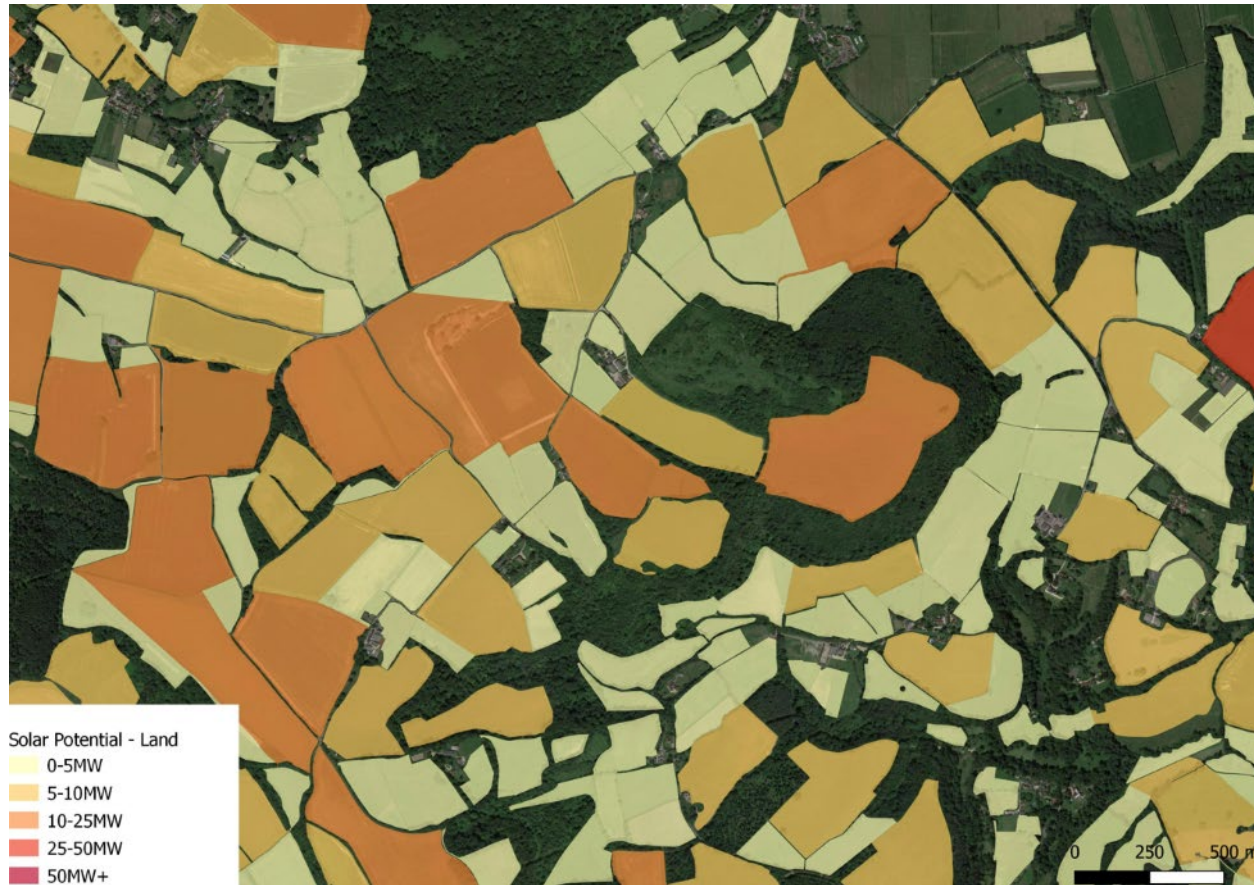
# Local Plan: Developing evidence base

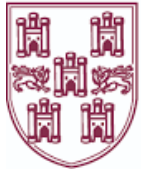


**UK scale**  
operational zero carbon



# Local Plan: Developing evidence base





**Winchester**  
City Council



**WeCAN**

Winchester Climate Action Network



**centre for  
sustainable  
energy**



**South Downs**

National Park Authority

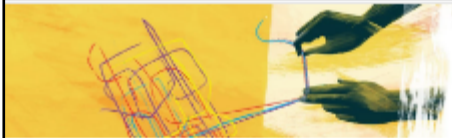
Winchester

**Rotary**





# WeCAN Learnings Report





## Parish communities climate engagement & action project

### WeCAN Learnings Report

A report by the Centre for Sustainable Energy and Winchester Action on the Climate Crisis for Winchester City Council

March 2022



### 3. Territorial Footprint

#### Your whole footprint

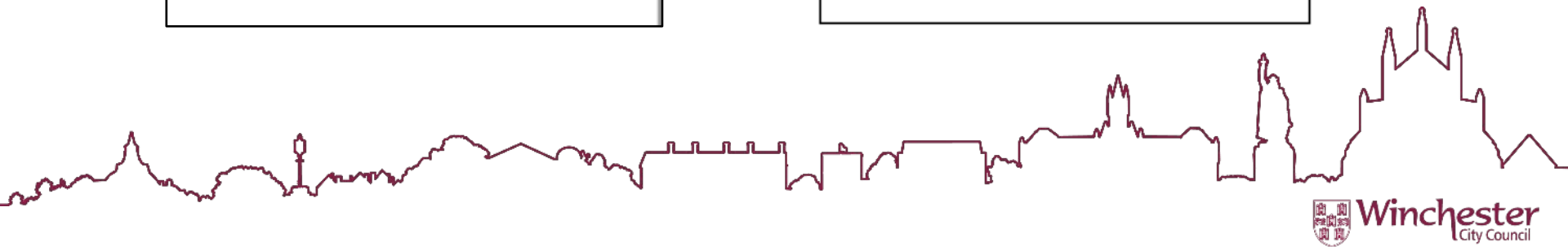
This figure shows the annual carbon emissions (measured in tonnes) emitted as a result of 'activities' taking place within your civil parish's boundary.

While these figures should give you a reasonable indication of the major sources of emissions within your parish's boundary, they should be taken with a small pinch of salt, as some sectors are difficult to apportion territorially. For example, emissions from international shipping are calculated for the whole country and apportioned to each parish based on its population. For more information, see the [impact methodology page](https://www.impactmethodology.com).

Sector	Carbon Emissions (tonnes)	Percentage
Road Transport	687	42%
Heating	201	12%
Industrial and commercial	167	10%
Shipping	107	6%
Aviation	85	5%
Other transport	75	5%
Electricity and gas	67	4%
Waste management	57	3%
Other	49	3%
Other transport	30	2%
Electricity and gas	20	1%
Aviation	10	1%
Other	10	1%

#### A breakdown of the numbers

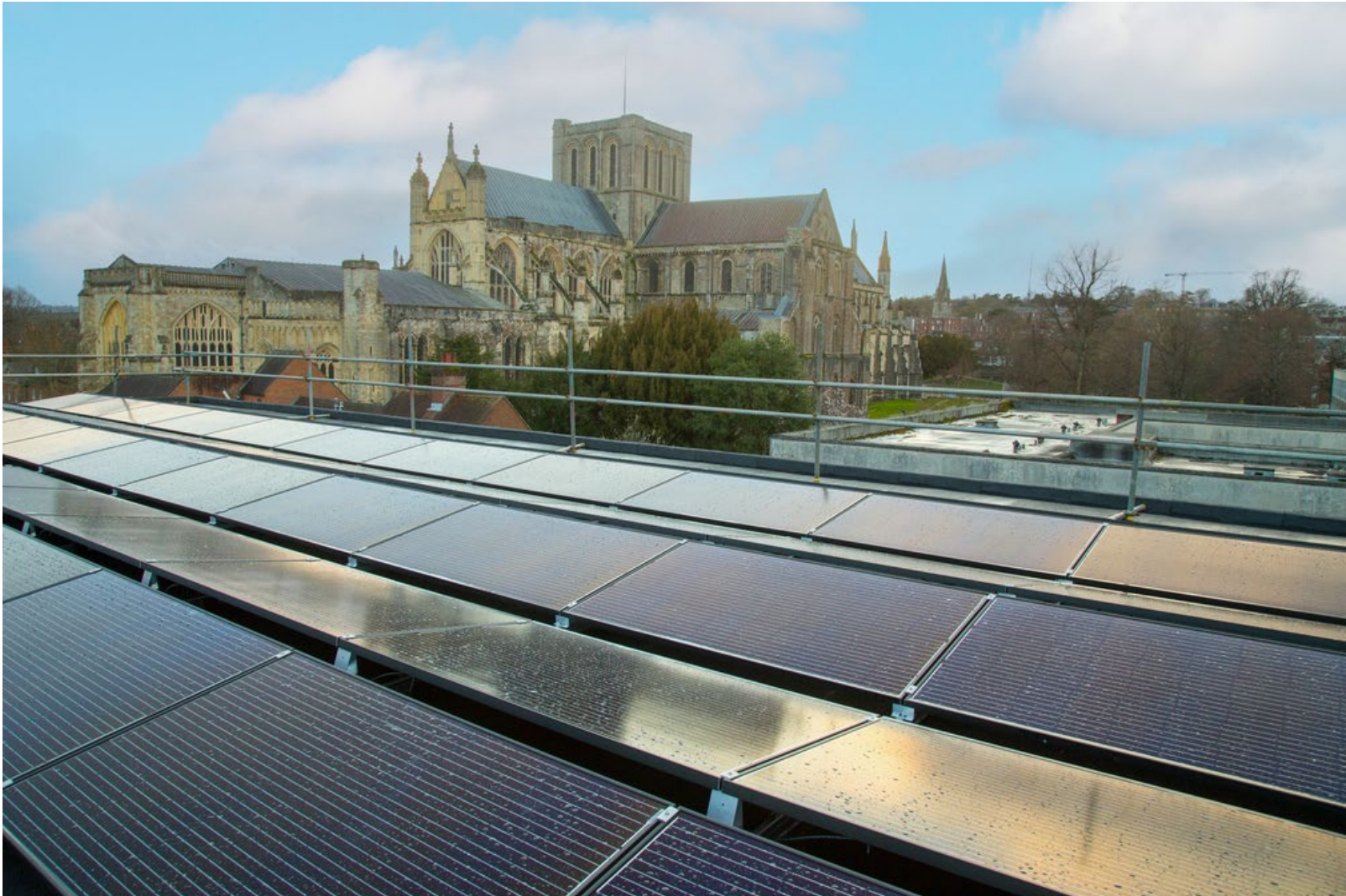
Below is your community's territorial footprint tabulated - total and per-household - so that you can see a breakdown of the numbers.

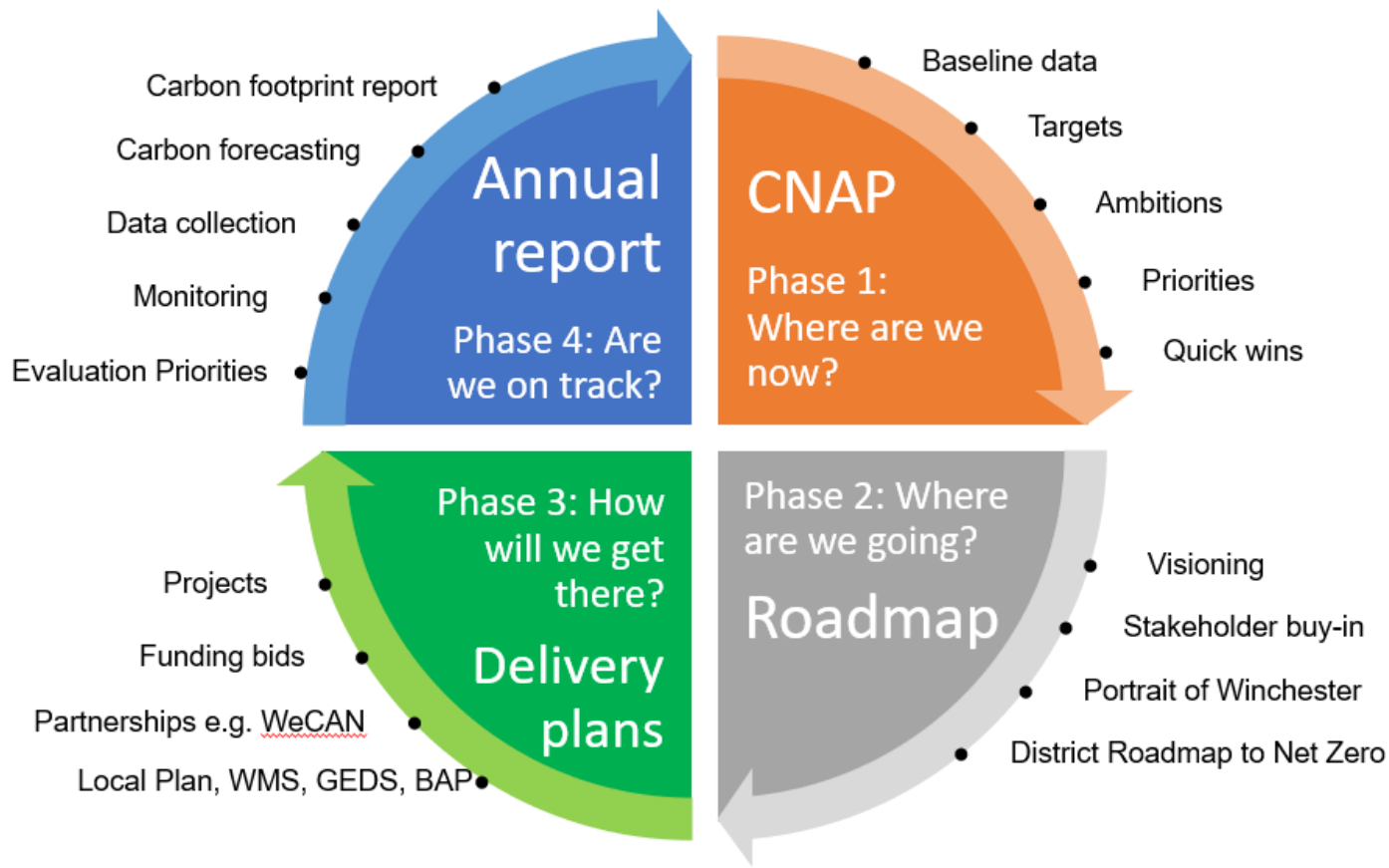




# Carbon Reduction Projects

April 2020 to March 2022







# Progress to date

April 2020 to March 2022



cut **468 tonnes**  
from our carbon footprint  
2019/2020



recycled **5,500**  
tonnes of  
garden waste



created **17**  
wildflower areas ,  
each has introduced **25**  
native species



reduced our co<sup>2</sup> emissions  
by **19%** by switching to  
green electricity



installed more than  
**40** new electric vehicle  
charging points in  
public car parks



introduced kerbside glass,  
battery and small electrical  
items collections



invested **£15m**  
to cut co<sup>2</sup> in  
council housing



planted **1,224**  
trees



increased glass collection by  
**100 tonnes** each month  
across the district



installed **849m<sup>2</sup>**  
of solar panels at  
Winchester Sport &  
Leisure Park



adopted a Biodiversity  
Action Plan



Winchester City Council sat  
on COP26 panel to share how  
we trained **126** staff and  
received the BRONZE Carbon  
Literate Organisation award



received a BREEAM **excellent**  
rating at our new  
leisure centre



achieved **80%**  
of all actions  
in Year 1

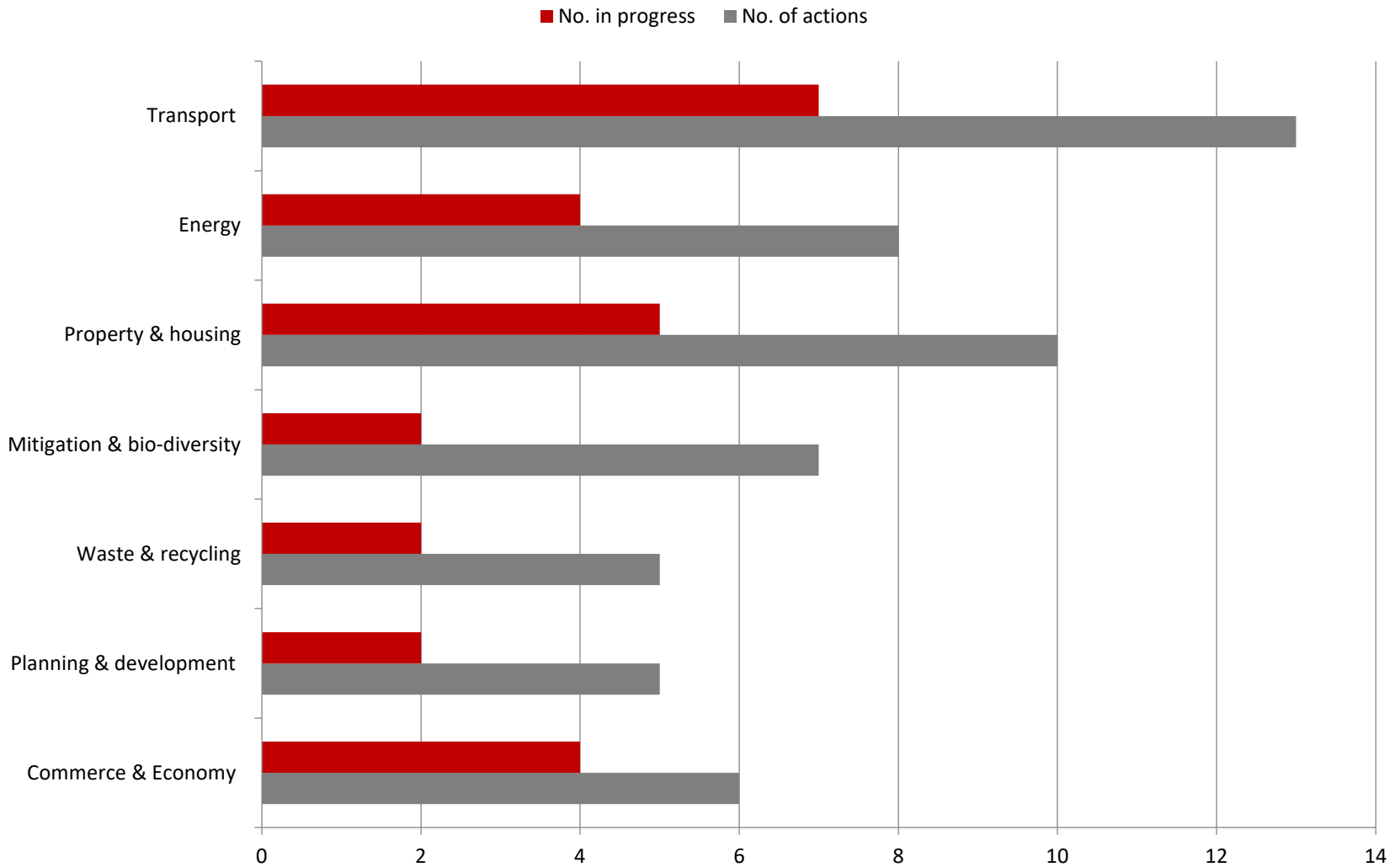


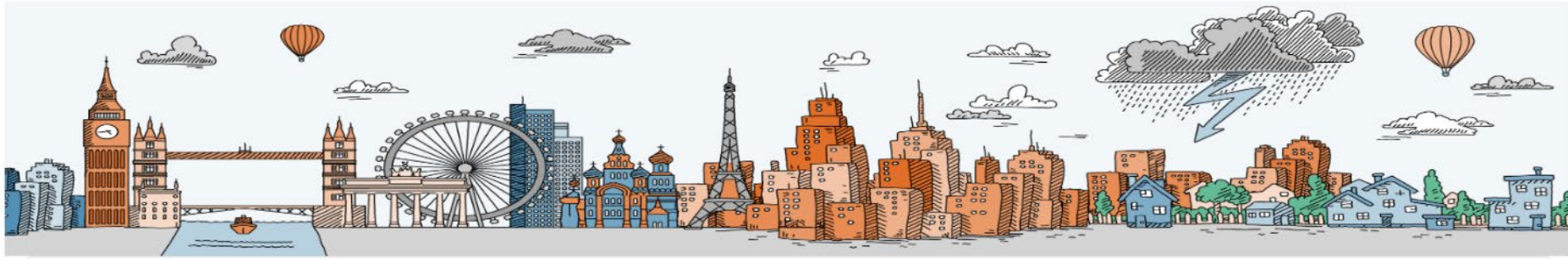
# IN THE PIPELINE FOR 2022/23

- Electric Park & Ride Bus trial
- PV installed across Estate
- EVCP Phase 2 – collaboration with our 41 Parishes
- Offsetting: Paper approved (inc solar farm)
- Introduce Climate Change and Adaptation Decision Making Tools
- LCWIP & Winchester Movement Strategy
- Retrofit – Housing / £1.5 mil/yr & Commercial Buildings
- Developing Community Energy
- Technical Advice Note on Biodiversity Net Gain



# NUMBER OF PROJECTS IN PROGRESS



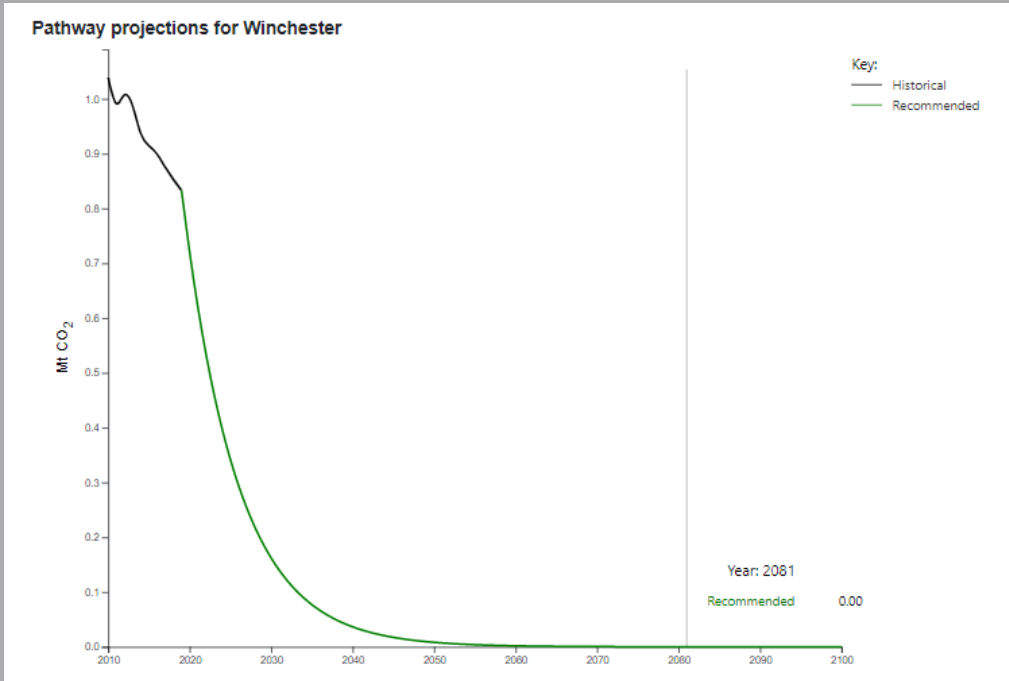


## Recommendations for Winchester

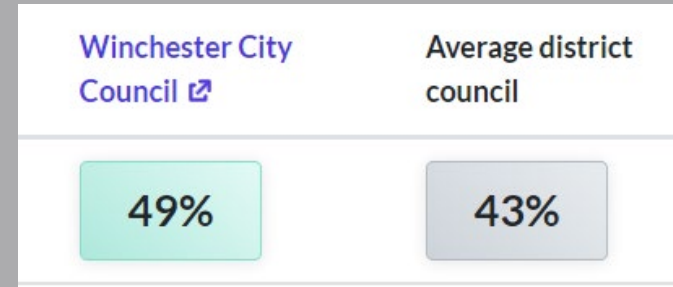
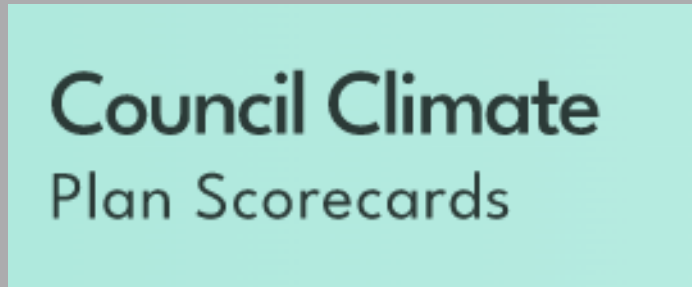
1. Stay within a maximum cumulative carbon dioxide emissions budget of **5.2 million tonnes (MtCO<sub>2</sub>)** for the period of 2020 to 2100. At 2017 CO<sub>2</sub> emission levels, Winchester would use this entire budget within **6 years** from 2020.
2. Initiate an immediate programme of CO<sub>2</sub> mitigation to deliver cuts in emissions averaging a minimum of **-13.9%** per year to deliver a Paris aligned carbon budget.
3. Reach zero or near zero carbon no later than **2041**



Pathway projections for Winchester



# How do we compare?



Winchester was rated

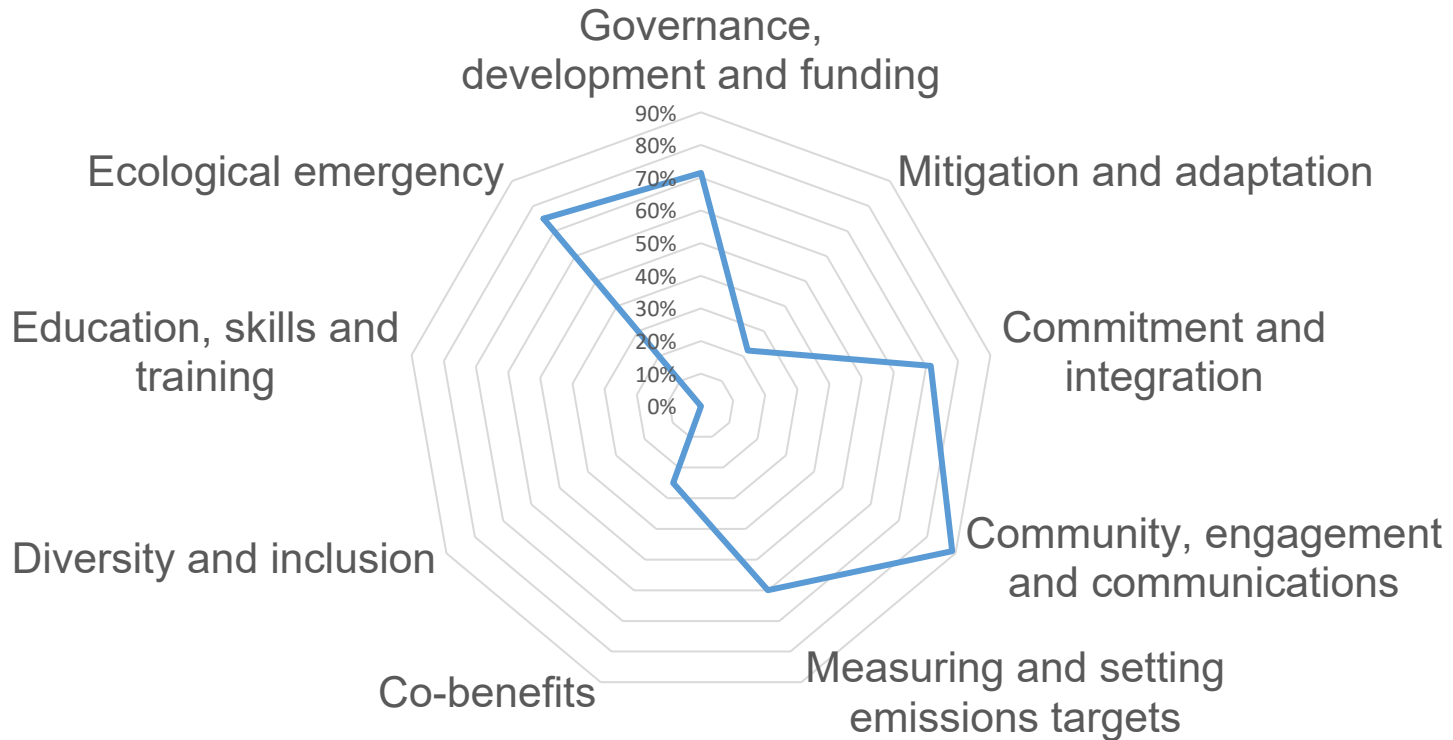
**59<sup>th</sup>** out of **181** District Councils

<https://data.climateemergency.uk/>

# How do we compare?



Climate Action Plan Explorer



Source: MySociety Climate Scorecard 2022

Source: <https://data.climateemergency.uk/>



Thank You -  
Questions and comment

