

St Helens Holiday Activities and Food Provision

ST HELENS
BOROUGH COUNCIL

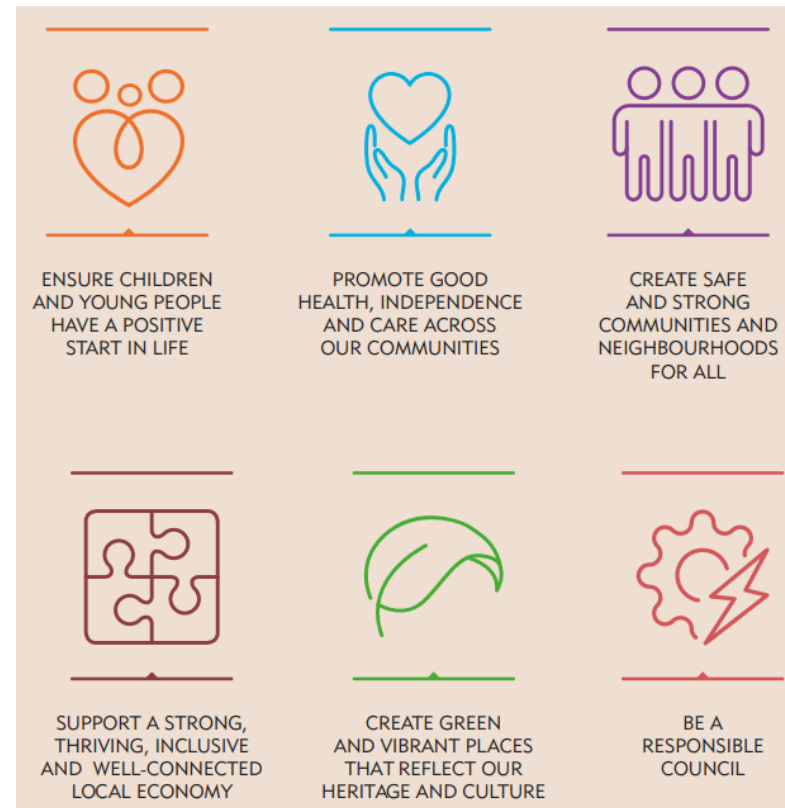
Vicky Velasco – Head of Service

Ian Henry – Children's Centre
Manager



Our Borough Strategy

- St Helens Together: Our Borough Strategy sets the strategic direction for the Borough
- 6 priorities – all that we do should support one or more of these priorities



Vision

Working together for a better borough, with people at the heart of everything we do by

improving people's lives together and creating distinct, attractive, healthy, safe, inclusive, and accessible places in which to live, work, visit and invest.

Our Borough Strategy: The Bonds for a Better Borough



Priority One: Ensure children and young people have a positive start in life

OUR BONDS FOR A BETTER BOROUGH

TOGETHER WE WILL

The council will	You can
Involve children and young people in shaping services, listen to their feedback and implement the recommendations of the Good Childhood Inquiry	Take time to be supportive parents or guardians, encouraging children to be the best they can be
Support children and families with early help and improve our services for looked after children	Go to school/college ready to learn and take opportunities to develop and share your skills
Work with local schools as well as National Government to review the curriculum and help those in greatest need to catch up and promote educational attainment	Take advantage of training and job opportunities, setting high aspirations for yourself and your family
Reduce child poverty and inequality	Let us know if you or a family you know could benefit from some additional help or support to look after a child better.

Key Strategies, Plans and Programmes

The delivery of this priority will be supported by a range of strategies, plans and programmes including:

Children's Services Improvement Plan

St Helens Borough Education Recovery Plan

Ofsted Ready Action Plan

Care Leavers Strategy

Children's Services Demand Strategy

SEND Strategy



Priority Two: Promote good health, independence and care across our communities

OUR BONDS FOR A BETTER BOROUGH

TOGETHER WE WILL

The council will	You can
Deliver excellent, responsive, place based integrated services through St Helens Cares by working closely with partners	Continue to invest in your own health and well-being by making healthy choices and seeking help and support when you need it
Improve health, reduce health inequalities	Get active and enjoy leisure services and the parks and open spaces we have in our Borough. Get involved with the local sports sector by taking part or volunteering
Develop health and social care services that meet the needs of communities now and in the future.	Have your say about the services you want and need
Support people to manage their own health conditions in the community	Keep in touch and offer support to family, friends, neighbours, and the community

Key Strategies, Plans and Programmes

The delivery of this priority will be supported by a range of strategies, plans and programmes including:

St Helens Cares Place Plan
Vision for Adult Services

Outbreak Management Plan
Active Lifestyles Plan
Neglect Strategy



Priority Three: Create safe and strong communities and neighbourhoods for all

OUR BONDS FOR A BETTER BOROUGH

TOGETHER WE WILL

The council will	You can
Engage with and support our most vulnerable residents and those living in our most deprived communities	Look out for your neighbours, friends or vulnerable people in your community
Retain our registered volunteers and determine how best to mobilise and utilise their diverse skills and experience	Become a volunteer to share your skills and help other people in your neighbourhood.
Work with partners to understand the equality impacts arising more fully from COVID-19 and how adverse impacts can be minimised	Support local voluntary and community groups
We will continue to ensure there are enough quality and accessible homes to meet the needs of the population, and maintain our work on affordable warmth	Let us know any concerns that you have about your home or local area

Key Strategies, Plans and Programmes

The delivery of this priority will be supported by a range of strategies, plans and programmes including:

St Helens Borough Housing Strategy

St Helens Borough Homelessness Strategy

St Helens Borough Voluntary Sector Strategy

St Helens Borough Community Safety Plan

Domestic Abuse Strategy



ST HELENS
BOROUGH COUNCIL

Priority Four: Support a strong, thriving, inclusive and well-connected local economy

OUR BONDS FOR A BETTER BOROUGH

TOGETHER WE WILL

The council will	You can
Use our place leadership role to help businesses survive and grow and work closely with Liverpool City Region to maximise opportunities for St Helens	If you're a local business, engage with local networks
Embed social value within our plans and strategies to make the most of all opportunities	Support local businesses including the town centres and high streets by using the shops and facilities there
Ensure that the right green, transport or digital infrastructure is provided to support economic prosperity.	If you're a local business, create a healthy workplace and provide opportunities for apprenticeship positions, training and work experience
Review our proposals for the regeneration of the Town Centres in St Helens and Earlestown in order to create jobs, attract business, and create vibrant high streets that attract visitors.	Take part in consultations and give us your feedback and views
The council will encourage inward investment to create jobs for local people	Take up opportunities to develop new skills

Key Strategies, Plans and Programmes

The delivery of this priority will be supported by a range of strategies, plans and programmes including:
St Helens Borough Local Plan 2020-2035

Town Investment Plan
St Helens Borough Economic Recovery Plan
LCR Building Back Better Economic Recovery Plan



Priority Five: Create green and vibrant places that reflect our heritage and culture

OUR BONDS FOR A BETTER BOROUGH

TOGETHER WE WILL

The council will	You can
Deliver our strategies for arts, culture and recreational services	Be proud, celebrate and enjoy our arts, culture, heritage and recreational facilities in the borough
Use funding opportunities to invest in projects that promote alternative means of travel, maintain air quality and reduce our carbon footprint.	Walk, cycle and use public transport where you can
Review our waste management processes to improve our services to residents	Help to keep where you live clean and tidy and recycle as much as you can
Establish a Climate Change Commission to tackle climate change and become carbon zero by 2040 and support delivery of the UN Sustainable Development Goals to reduce inequalities and build a more sustainable future	Make simple lifestyle changes like buying more locally produced food to reduce your carbon footprint

Key Strategies, Plans and Programmes

The delivery of this priority will be supported by a range of strategies, plans and programmes including:

St Helens Borough Heritage Strategy
St Helens Borough Arts Strategy
St Helens Borough Libraries Strategy

Priority Six: Be a responsible council

OUR BONDS FOR A BETTER BOROUGH

TOGETHER WE WILL

The council will	You can
Adopt new ways of working and reshape services to be more responsive, rationalise our operational estate and reduce costs	Use your vote in local and national elections
Create further opportunities to co-design, engage and involve residents, community groups and local businesses	Get involved and engage with us on shaping local services
Develop further digital services	Make the most of our online services

Key Strategies, Plans and Programmes

The delivery of this priority will be supported by a range of strategies, plans and programmes including:

St Helens Borough Council
Budget Strategy

St Helens Borough Council
Ways of Working Programme

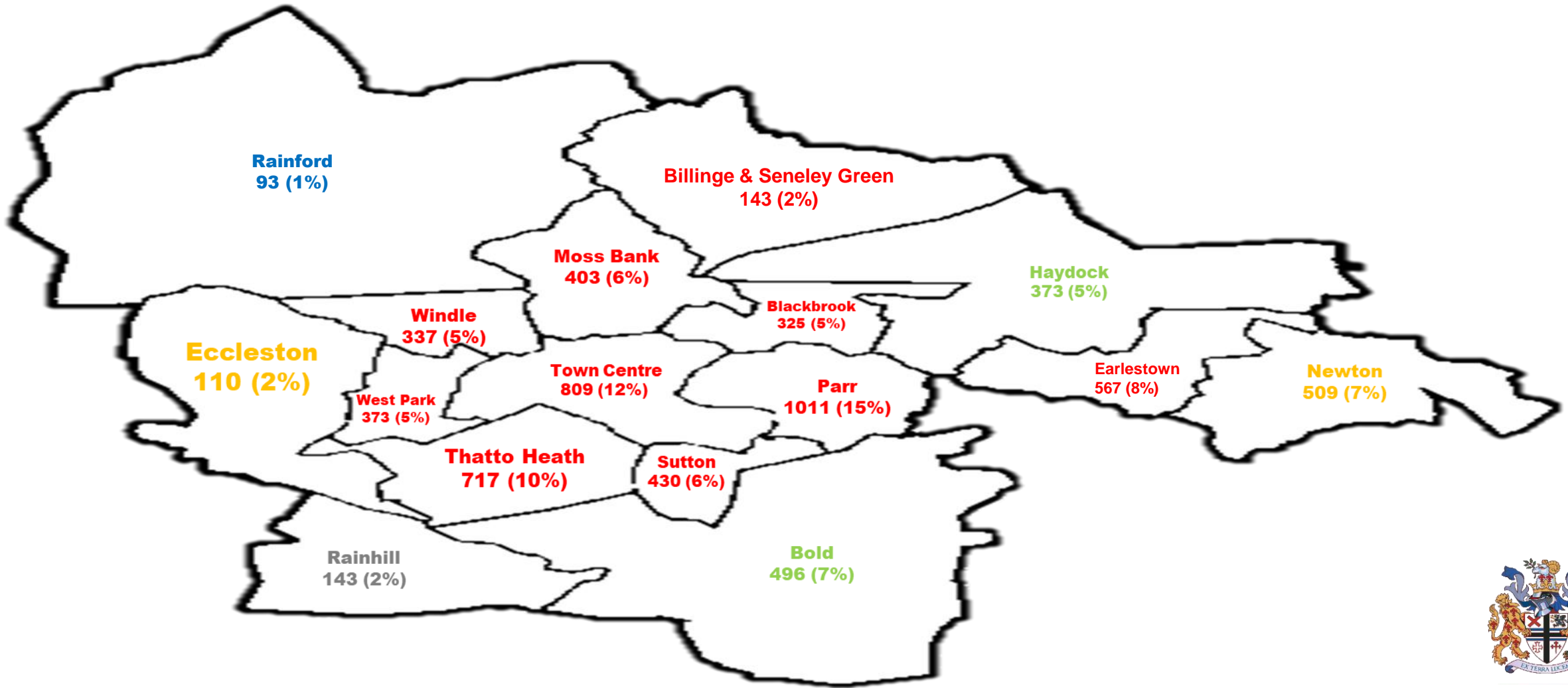
St Helens Borough Council
Commercialisation Strategy

IT Strategy

Organisational Development Strategy

Community Engagement Strategy

Map of St Helens Free School Meals



Identified what data/information we needed.

Who we were targeting.
Ensure that no one was missed.

Utilised our Families First Programme – free school meals data from the DWP

The formation of a steering group.
Involved all relevant agencies to support the delivery of HAF.

Next Steps

- Ensured that delivery was borough wide so that all of the 7,000 children who are entitled to free school meals had the opportunity to access the provision, with the higher need of provision targeting the less affluent areas of the town.
- Accessed the HAF bitesize sessions, this supported the St Helens vision of delivery and enabled us to forward plan and ensured that the provision met the local need.
- Steering group formed and local providers identified for the Easter programme.
- Local providers approached and completed proforma's returned.
- Local provision mapping exercise completed.
- Gaps in provision were addressed.
- Consideration for the impact of Covid-19 restrictions planned for.
- Programme promoted via social media, local press, schools and LA website.
- Programme delivered over the Easter half term.
- Evaluation report completed.

What does the summer programme look like?

- Evaluation report considered which informed planning for the summer provision.
- Consultation with parent's/carers, children and providers.
- 4 x 4 x 4 model discussed with steering group.
- Provision mapped according to local need.
- Providers approached.
- Delivery agreed by steering group.
- Sustainability.



Delivery of the programme

- St Helens summer HAF offer will have 26,600 places for our children.
- This will be a 7 days a week provision.
- This provision includes –
 - Boxing sessions
 - IT
 - Drama
 - Educational trips
 - Play streets
 - Cooking
 - Virtual reality sessions
 - Cheerleading sessions
 - Badminton
 - Brake dancing
 - Graffiti art
 - Swimming sessions

and much more.....





Any Questions?

