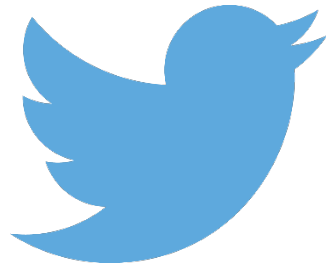


**Be part of the conversation!**  
**Follow APSE on Twitter and LinkedIn**



**@apseevents**  
**@apsenews**



**@APSE - Association for  
Public Service Excellence**

# Transport round-up and Covid-19

- Are there any lasting changes from Covid-19
- Greening the fleet – latest progress
- Update on transport related legislation and covid-19 guidance

# Covid-19 – End of Restrictions

- ~~June 21 is party time~~
- ~~Rules on 1 metre plus, the wearing of face coverings and other measures lifted~~
- ~~Cleaning regimes return to normal~~
- ~~Return to work~~

# Covid-19

- Employment – Automation
- Healthcare – Tele-medicine
- Travel – Strict Precautions
- Education – Virtual curriculum
- Staffing – Increased working from home

# Clean Air Zones

<https://youtu.be/SyMk36cEMGM>

# Fuel

A large black circle containing the text "E10" in bold black font.A large black circle containing the text "E5" in bold black font.

KNOW YOUR  
**FUEL**

**STANDARD PETROL  
IS CHANGING TO E10**

If your petrol vehicle was made before 2011,  
or you ride a motorcycle, use the online vehicle  
checker to see if your vehicle is compatible.

E10 helps cut carbon emissions and is now  
the standard petrol.

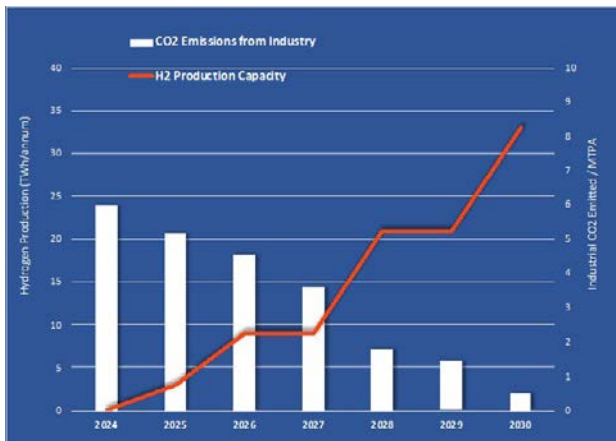
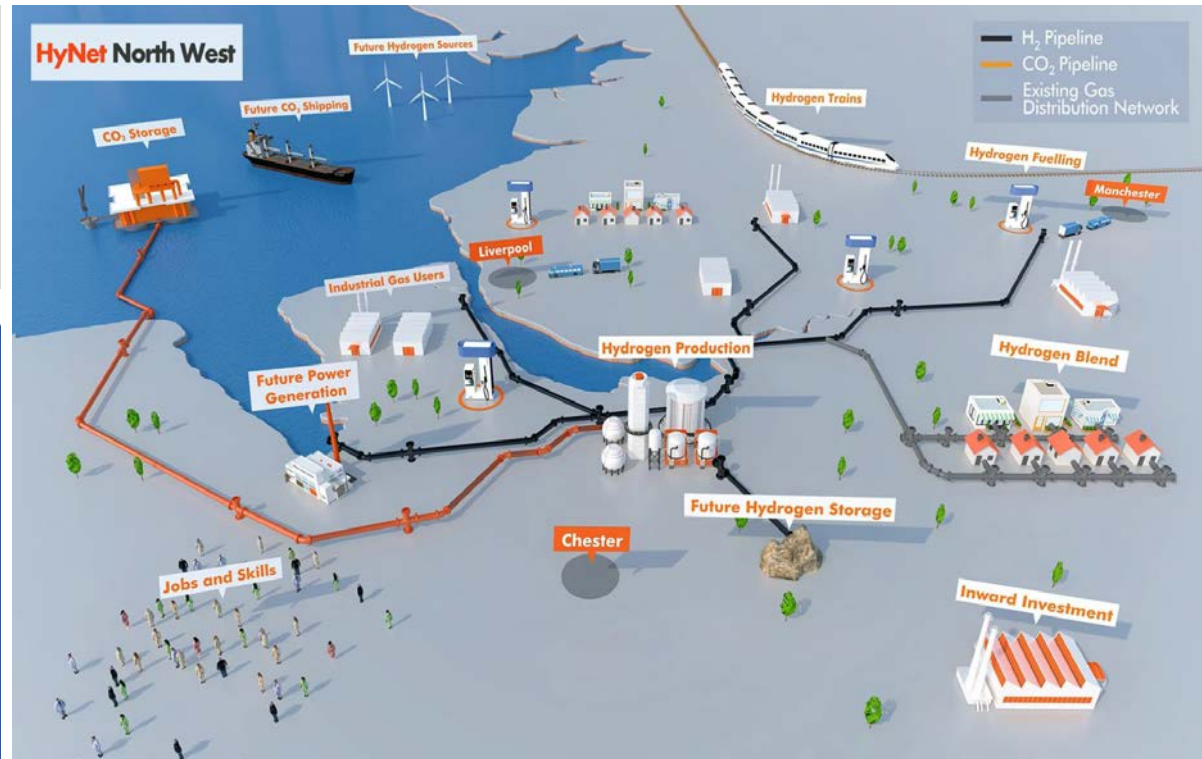
A green fuel nozzle with a white circular logo on the handle that says "E10".

**E10** CONTAINS UP TO  
10% BIOETHANOL

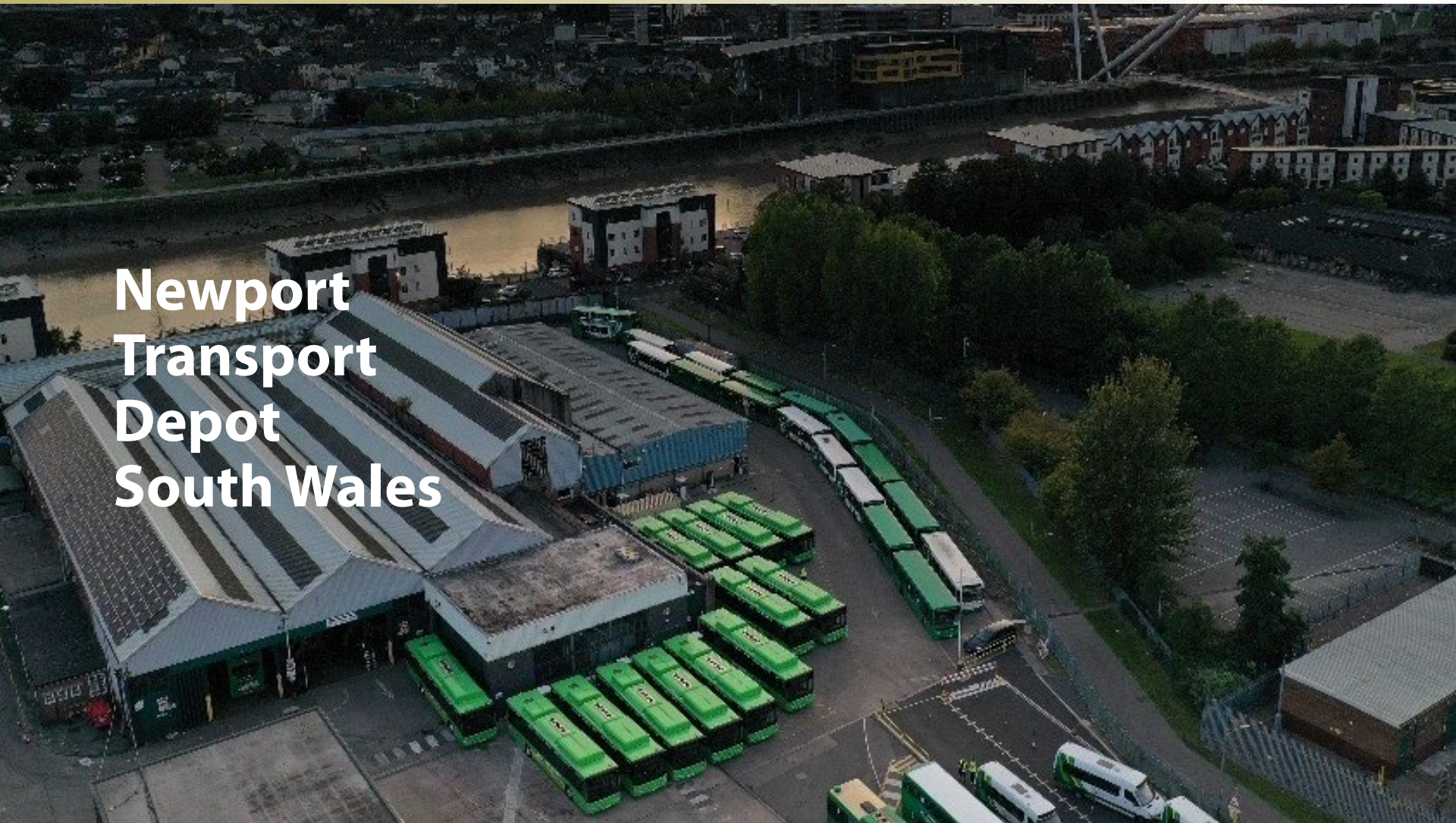
When safe, check your vehicle at [gov.uk/E10checker](http://gov.uk/E10checker)

# HyNet offers broad decarbonisation

- Industry
- Heating
- Transport
- Dispatchable Power



# Newport Transport Depot South Wales







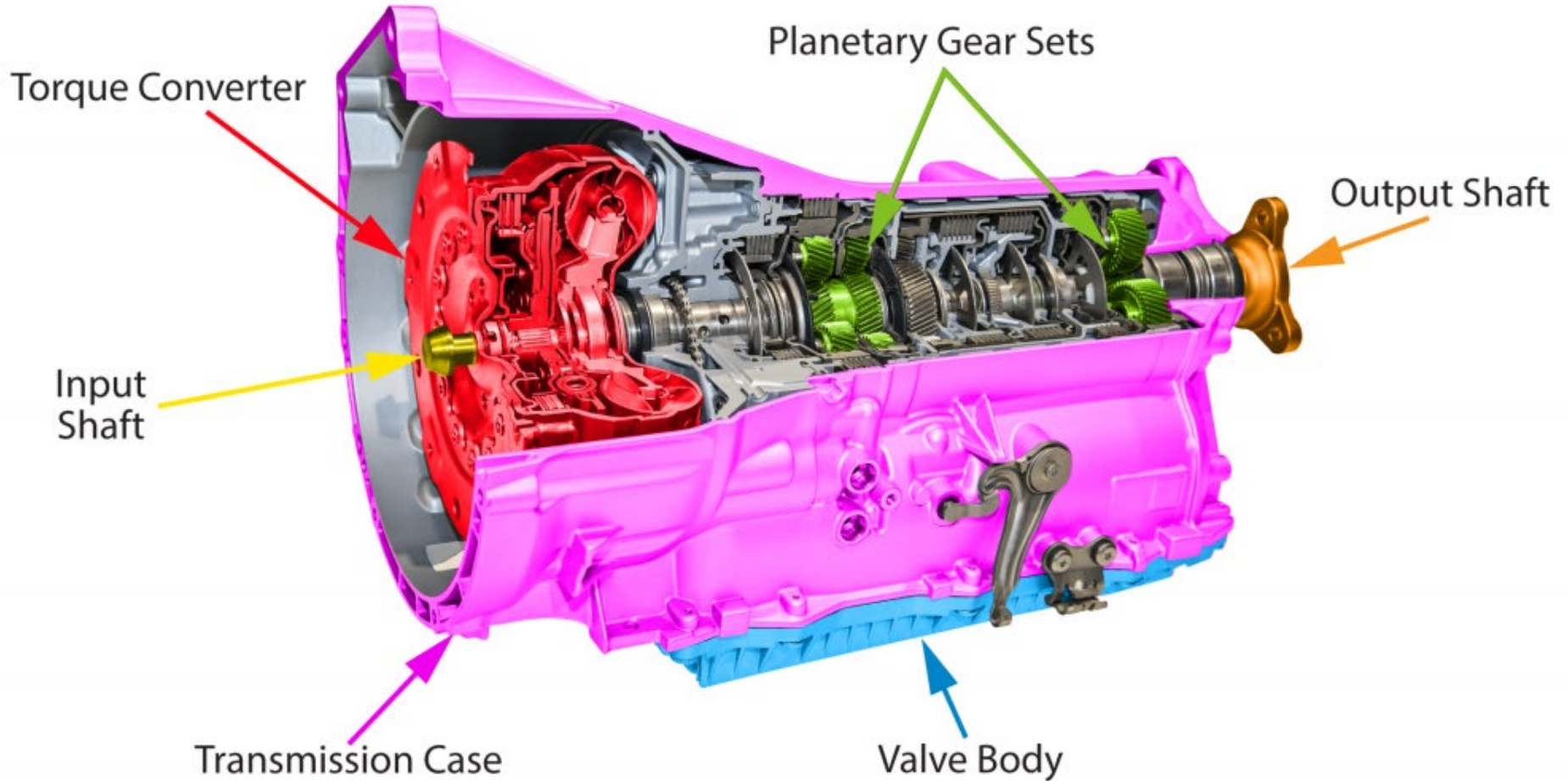
**Leyland Titan PD2**

**Yutong E12**

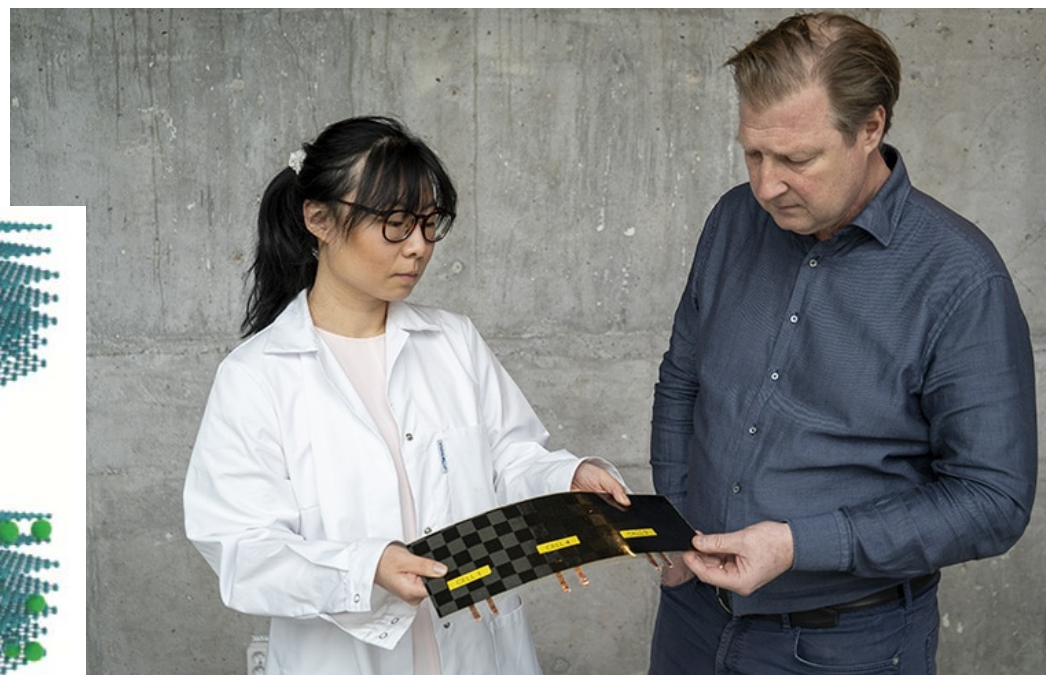
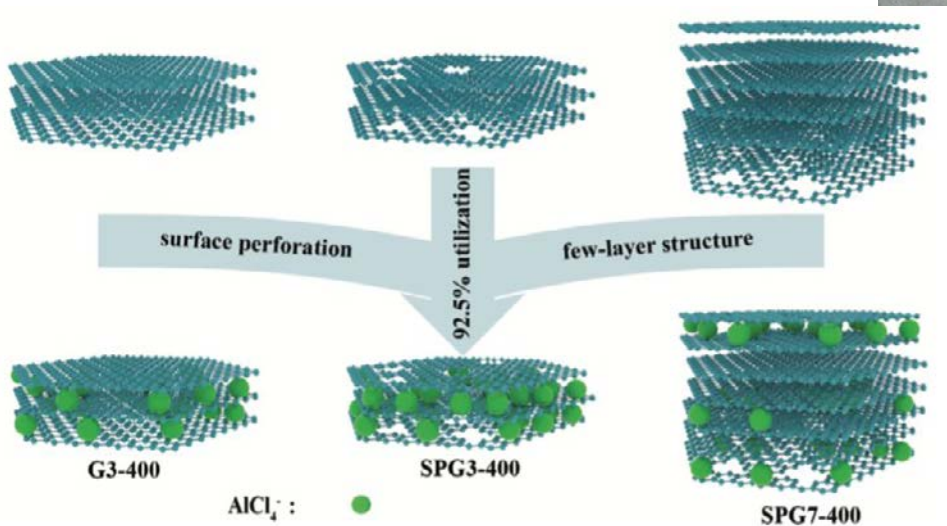
apse

membership resources





# Batteries





Traffic levels are forecast to **rise** by between **17% and 51%** by 2050.

The key drivers of growth are **increases** in **population** and **decreases** in **vehicle running costs**

By 2050, on the **Strategic Road Network**



an **additional 1 to 2 vehicles** forecast

for **every 3 cars** currently using these roads



NIKOLA ONE



TESLA SEMI





membership resources



[www.apse.org.uk](http://www.apse.org.uk)

# **NEW MUNICIPALISM**

Delivering for local people and local economies





# Contact details

**Rob Bailey,**

**APSE Principal Advisor**

**Email: [rbailey@apse.org.uk](mailto:rbailey@apse.org.uk)**

**Association for Public Service Excellence**

3rd floor, Trafford House, Chester Road,  
Old Trafford, Manchester M32 0RS.

**telephone: 0161 772 1810**

**web: [www.apse.org.uk](http://www.apse.org.uk)**



**GB 11409**



**GB 11132**



**GB 14074**