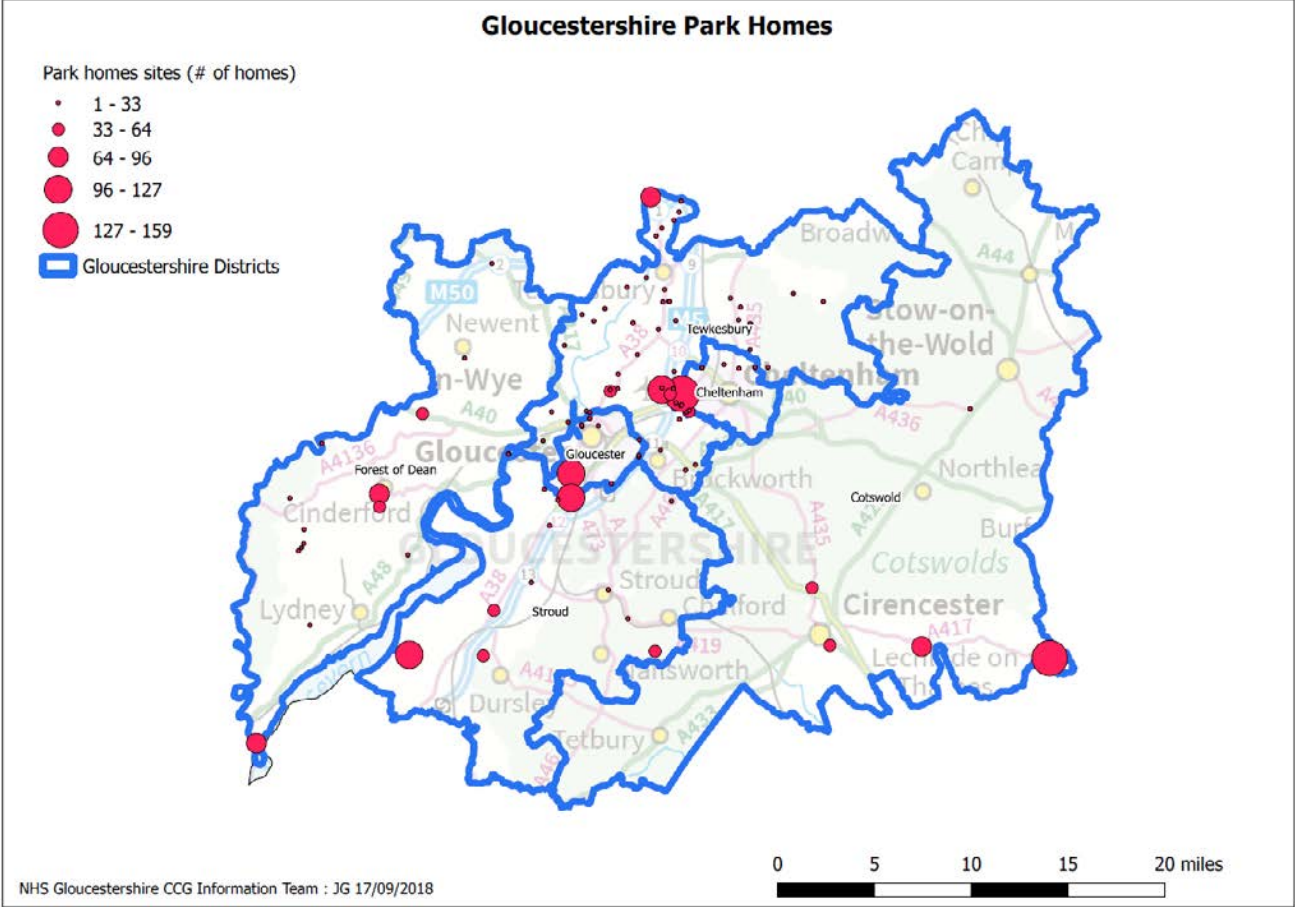


GLOUCESTERSHIRE Park Homes Project

Neil Penny
7th October 2021



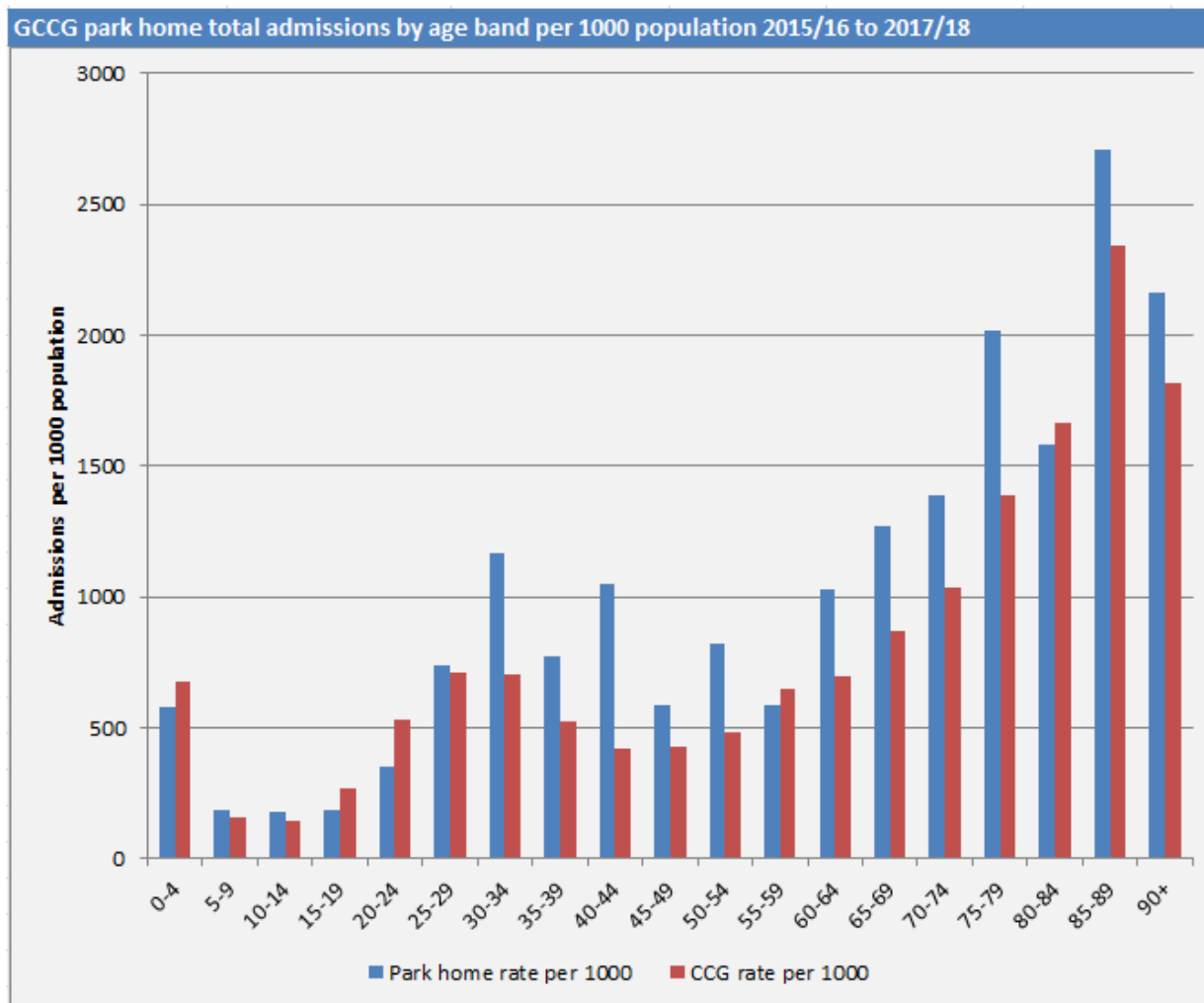
Introduction



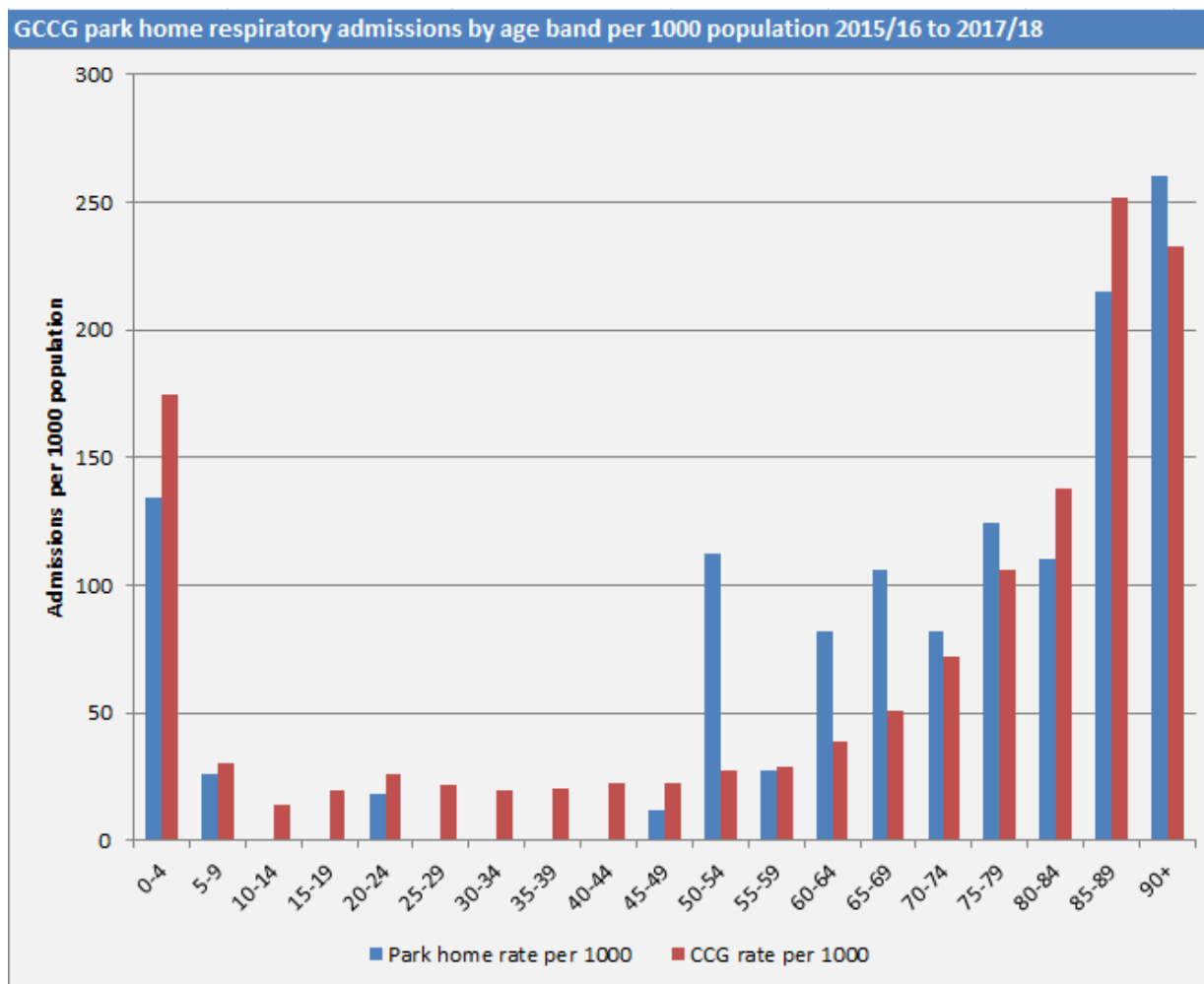
The Key Issues

- Park Home residents experience worse health than those in standard houses
- Too hot in summer, too cold in winter
- We used health data by postcode to test this theory
- Park home sites often have their own post code or codes so easy to make comparison
- Results illustrated the issues

Hospital Admissions



Admissions - Respiratory



The Solution

- Residents don't have access to funds available to standard housing
- Presented to Gloucestershire Disabled Facilities Grant (DFG) Forum
- Agreed to allocate sums from additional DFG money allocated
- Programme of improvements linking with local energy agency
- Over 100 properties insulated

Before



After



Residents' Feedback

“Lifesaver, it’s been an actual lifesaver. Last year we had 53 trips to the hospital with [Mr P’s] heart and cancer. Mr P has just had a double heart bypass and before it was always freezing cold in here. He’d be sat there with a coat on, not any more though.”

Financial Savings

- Building Research Establishment (BRE) Calculator
- Before and after EPC scores
- Savings in both health spend and wider society
- Also looking for reduction in hospital admissions

Green Homes Grant

- Successful bids for Green Homes Grant
- Local Authority Delivery 1a - £750,000
- Local Authority Delivery 1b - £900,000
- Further 200 homes being improved