

Healthy Trees – Healthy Landscapes



Jon Stokes

Director of Trees, Science & Research





Climate Change

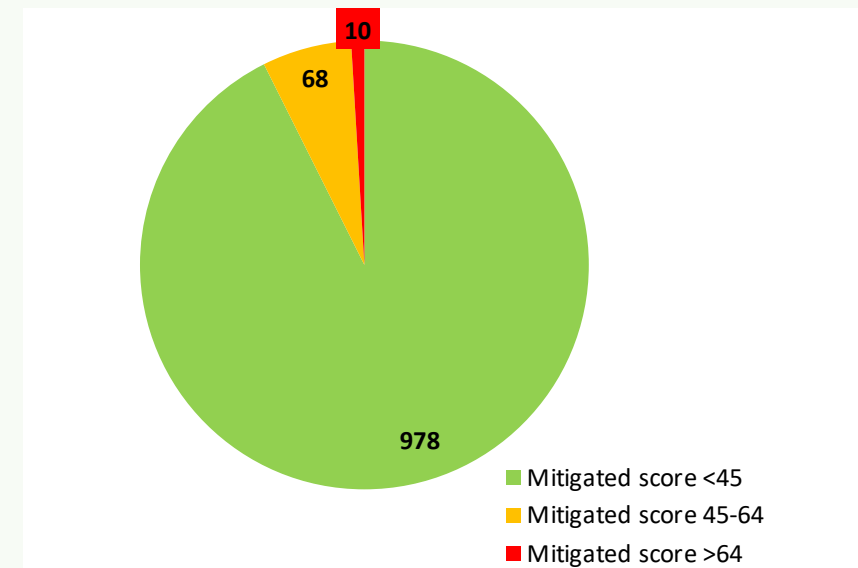
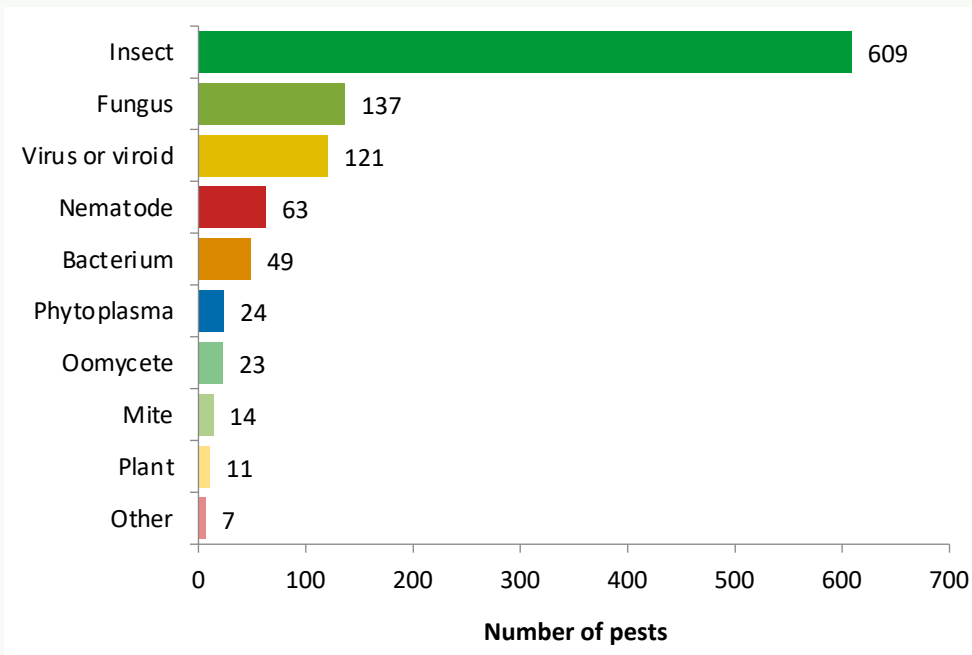


New Species – New Threats



New pest and diseases

- There are over 1100 plant pests and diseases on the [UK Plant Health Risk Register](https://secure.fera.defra.gov.uk/phiw/riskRegister/), 30% are classed as forestry pests
- Pests are continually added, reviewed & prioritised for action
- Mostly insects, mostly lower risk





The Next 50 Years

- Without the CAP

Ready for the Future?



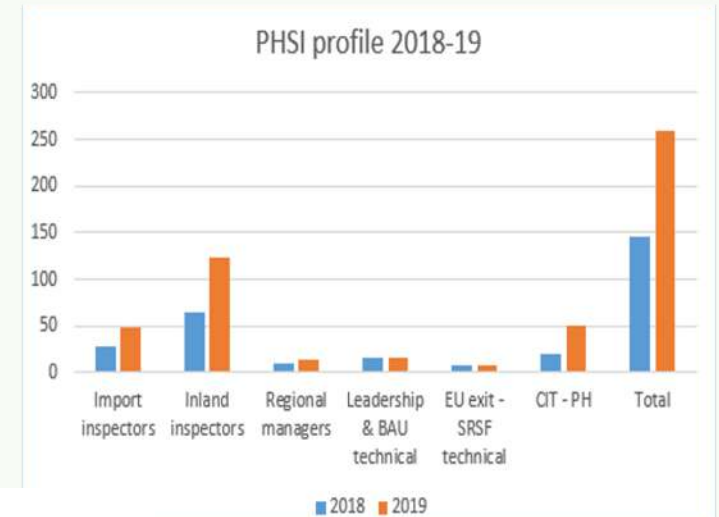
E.L.M.S.



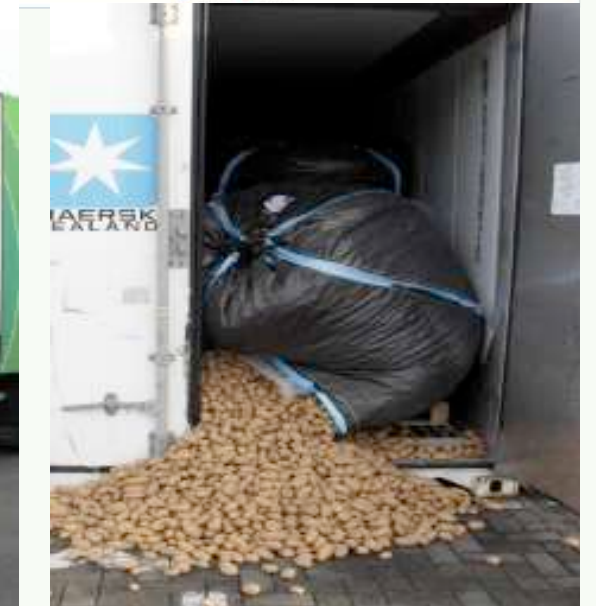
Border Inspections



- Over 50 sites operating 24hrs
- Over 100,000 document/identity checks
- Over 46,000 physical checks per year of **controlled** plant material
- Over 4,000 inspections of **uncontrolled** material at their discretion.
- Highly effective in comparison to their peers. In 2019, the UK made 34% of all EU interceptions of harmful organisms from third countries (over 500 interceptions).



	2019
PEACH notified imports	109,047
Checks requiring physical inspection	46,619
Non controlled via BIPs	4,541
Non controlled postal	1,802
Harmful organisms	511
Europhyt notifications	1,503



Climate Change Committee



- The Committee on Climate Change recommends a new emissions target for the UK: net-zero greenhouse gas emissions (GHGs) by 2050
- Compared to our scenarios for the 80% target our net-zero scenarios involve almost twice as much tree planting (including on- farm).
- Net-zero scenarios involve extending hedges by 40%
- Afforestation of around 30,000 hectares per year (increasing woodland cover from the current 13% of UK land area to 17%), combined with an increase in active woodland management, increases the net forestry sink to 22 MtCO₂e per year by 2050
- Finally, provision of green transport methods inter-relates with tree planting to make walking and cycling an attractive prospect, thereby improving health benefits of low-carbon activities.



Nature for Climate Fund



- Nature for Climate Fund - £550m on tree planting
- Supporting delivery of Net Zero, Biodiversity & Nature
- GB target ~30,000 ha/yr of woodland creation by 2025 (1/3 in England)
- Net-zero scenarios involve extending hedges by 40% - either bigger and wider or 200,000km of new hedge
- Requires 66m more trees per year



Plant Healthy

- A new, voluntary certification scheme based on a technical Plant Health Management Standard, aims to complement government's regulations
- Launched in 2020, by UK Plant Health Alliance – cross sectoral group of organisations drawn from government, industry and NGOs (includes LI)
- Objective – to improve plant biosecurity across horticulture and forestry supply chains by:
 - Supporting businesses to adopt the principles of the Plant Health Management Standard
 - Enabling businesses to conduct an online self-assessment against the standard (mean score currently ~70%)
 - Enabling businesses to apply for membership to the certification scheme, after successful compliance audit (>13 registered auditors),
 - Providing training which promotes a culture that strives to continuously understand the latest biosecurity threats and enact precautions



Biosecurity



The key messages to share with your communities are:

- **Don't risk it:** never bring any plants or cuttings back to the UK from abroad
- **Buy safely:** Source your new trees carefully. Collect local seed and grow your own trees whenever possible. If you have to buy trees, ensure that your trees have been grown in the UK and that you check the biosecurity policy of the organisation supplying you with trees.
- **Be vigilant:** Report any unusual symptoms on trees to the Forestry Commission's [Tree Alert](#).



Science and Research



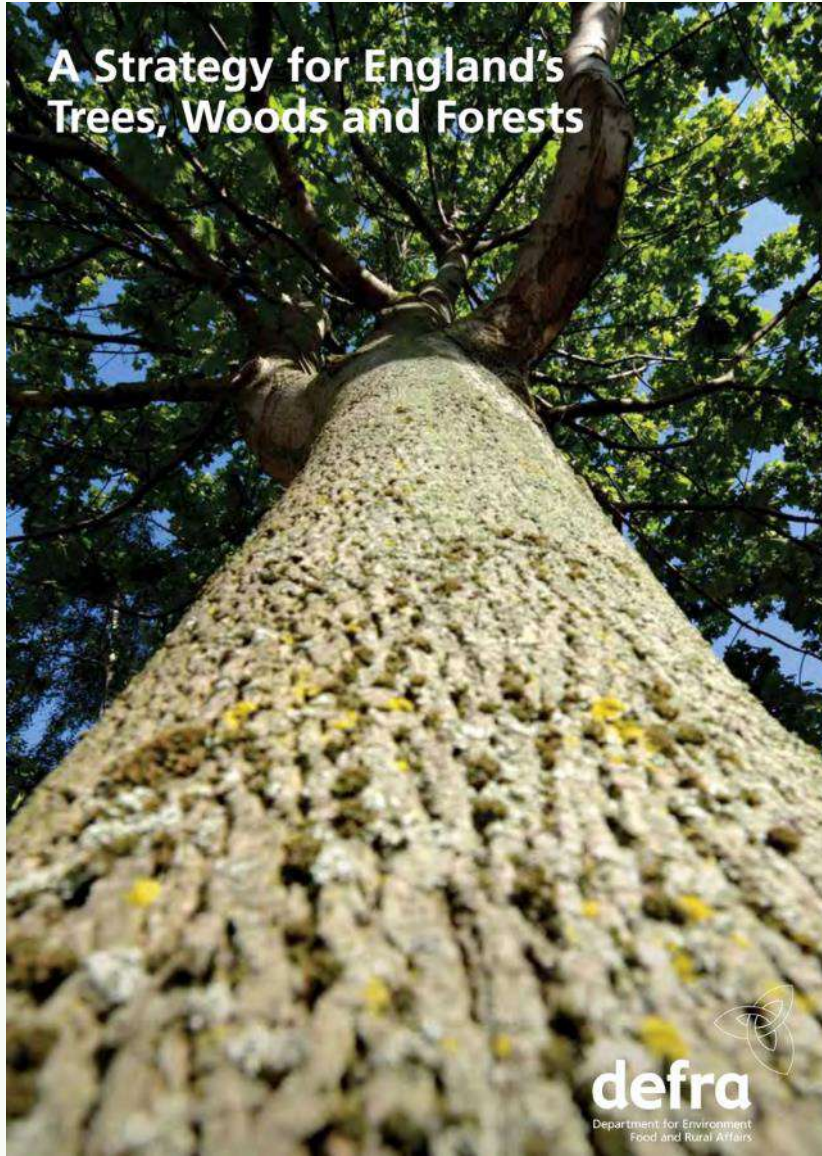
Sentinel Treescapes

Literally talking to trees!

TreeTalker is able to monitor

1. Water transport inside the plant
2. Diameter growth
3. Quantity and quality of foliage (light transmission in four spectral bands)
4. Climate and soil parameters (temperature, humidity).
5. Tree stability with gyroscopic sensor
6. Air temperature and humidity
7. Soil temperature and humidity

England Tree Strategy



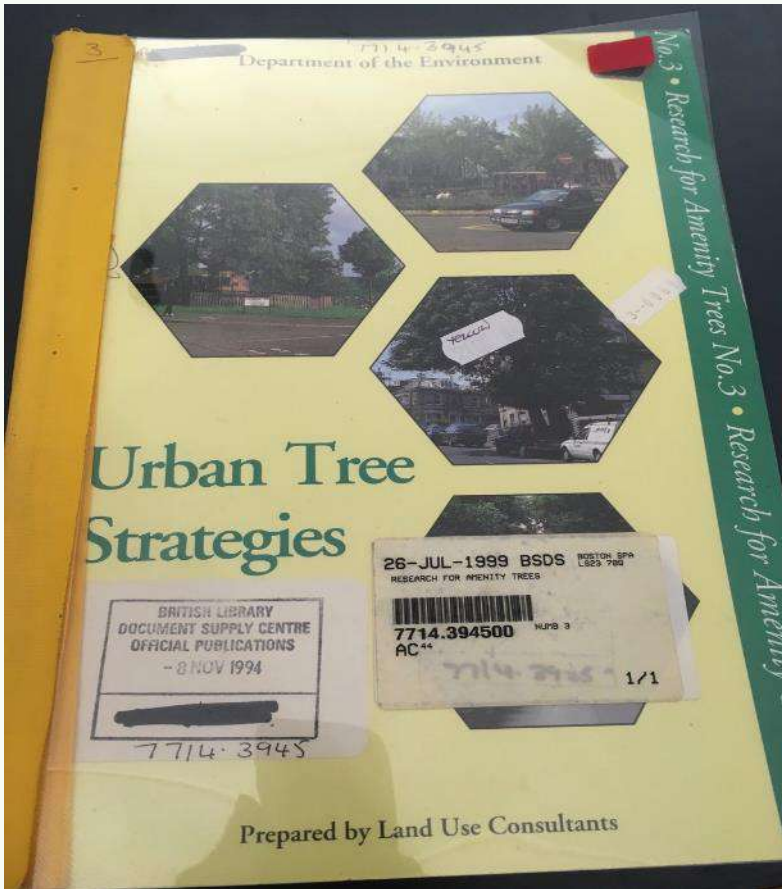
England Tree Strategy is being revised

What will it look like



The Tree Council

Local Tree Strategies



Best Practice



Healthy trees – Healthy Landscapes





Working together for the love of trees