



City of Trees

Making Trees Count-

Using data to develop a strategy for Greater Manchester's Trees and Woodlands

Bryan Cosgrove
City of Trees





What is a City of Trees?

City of Trees is an innovative and exciting **movement** that is re-invigorating Greater Manchester's landscape by **transforming** underused, unloved **woodland** and **planting** a **tree** for every person who lives there, within a generation.

City of trees is a movement, bringing together the **public, private** and **third sectors**, and the **people** of Greater Manchester.





Manch
City

Our aims



Plant 3 million trees – one for everyone in Greater Manchester



Bring 2,000 hectares of unmanaged woodland back into use for the community



Connect people to the trees and woods around them.



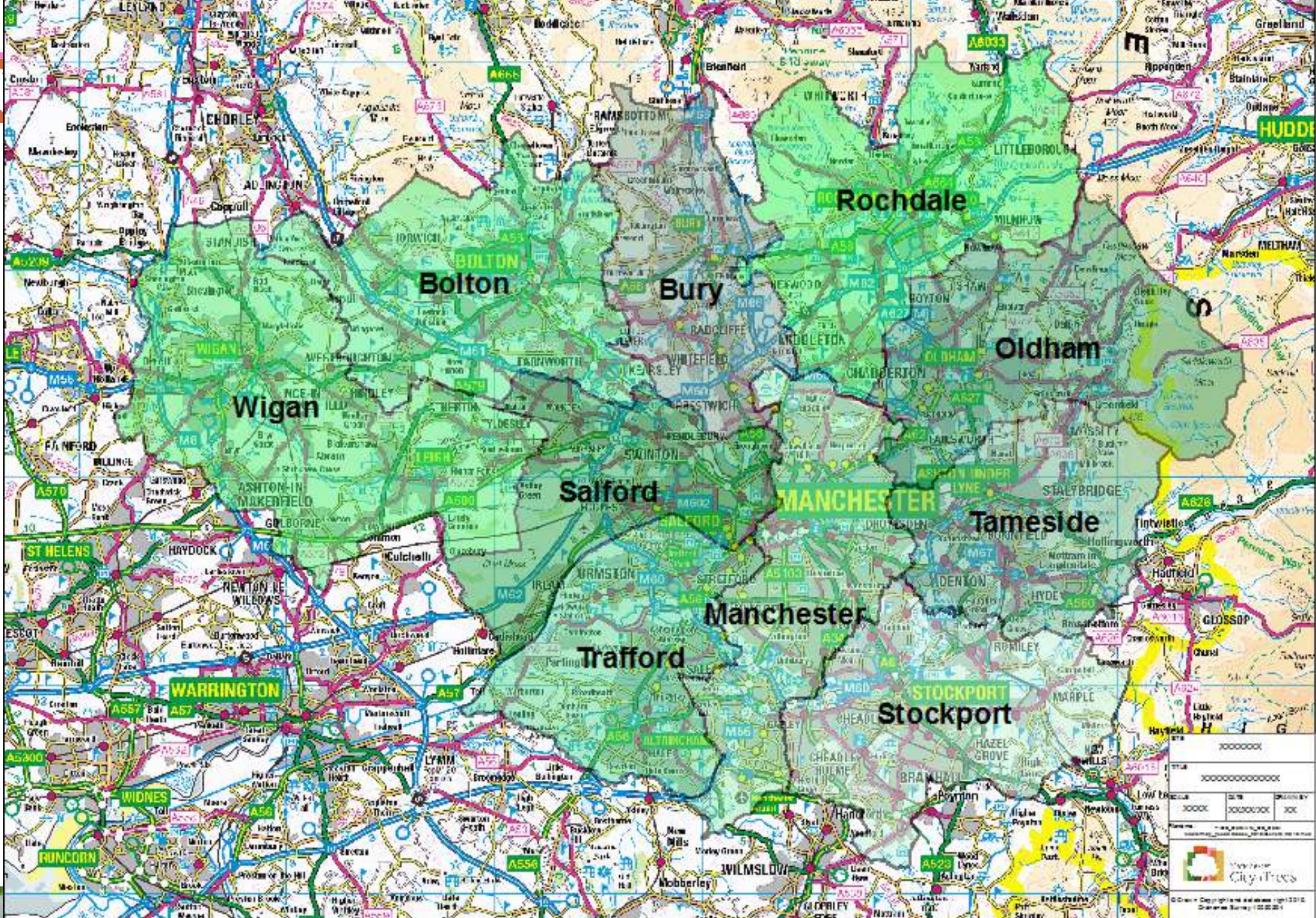
3 MORE TREES
AFTER MANCHESTER





A new Northern Forest





Policy and Influence

Locally...

We are building relationships to unlock strategic support for both trees and woods across Greater Manchester and have the strong support of Andy Burnham, Mayor.



We are part of a number of strategic groups including the [Low Carbon Hub](#), Natural Capital Group and Urban Pioneer, Catchment partnerships, GM Wetlands partnership, Greater Sport Activity Network and Natural Course.

We also co-ordinate the [Greater Manchester Forests Partnership](#) – a partnership of 10 local authorities and DEFRA to discuss and plan at a strategic level the development of trees and woodlands across the City region.

Delivering key agendas...

As well as delivering a wide number of community projects on the ground we also strive to ensure our work meets the key priorities of the region including air quality; health and wellbeing; flooding; climate change and resilience; low carbon; sustainable travel and skills and employment.



Donate to City of Trees



September marks the start of conker season. The conker is the seed of the horse chestnut tree. #SaturdayStats...
<https://t.co/wPhClbs9Oj> — 1 day 22 hours ago



Sign up for e-news



Manchester
City of Trees



Manchester
City of Trees



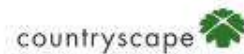
GROWING MORE TREES
FOR GREATER MANCHESTER



Greater Manchester Natural Capital Investment Plan

EXECUTIVE SUMMARY — JANUARY 2019

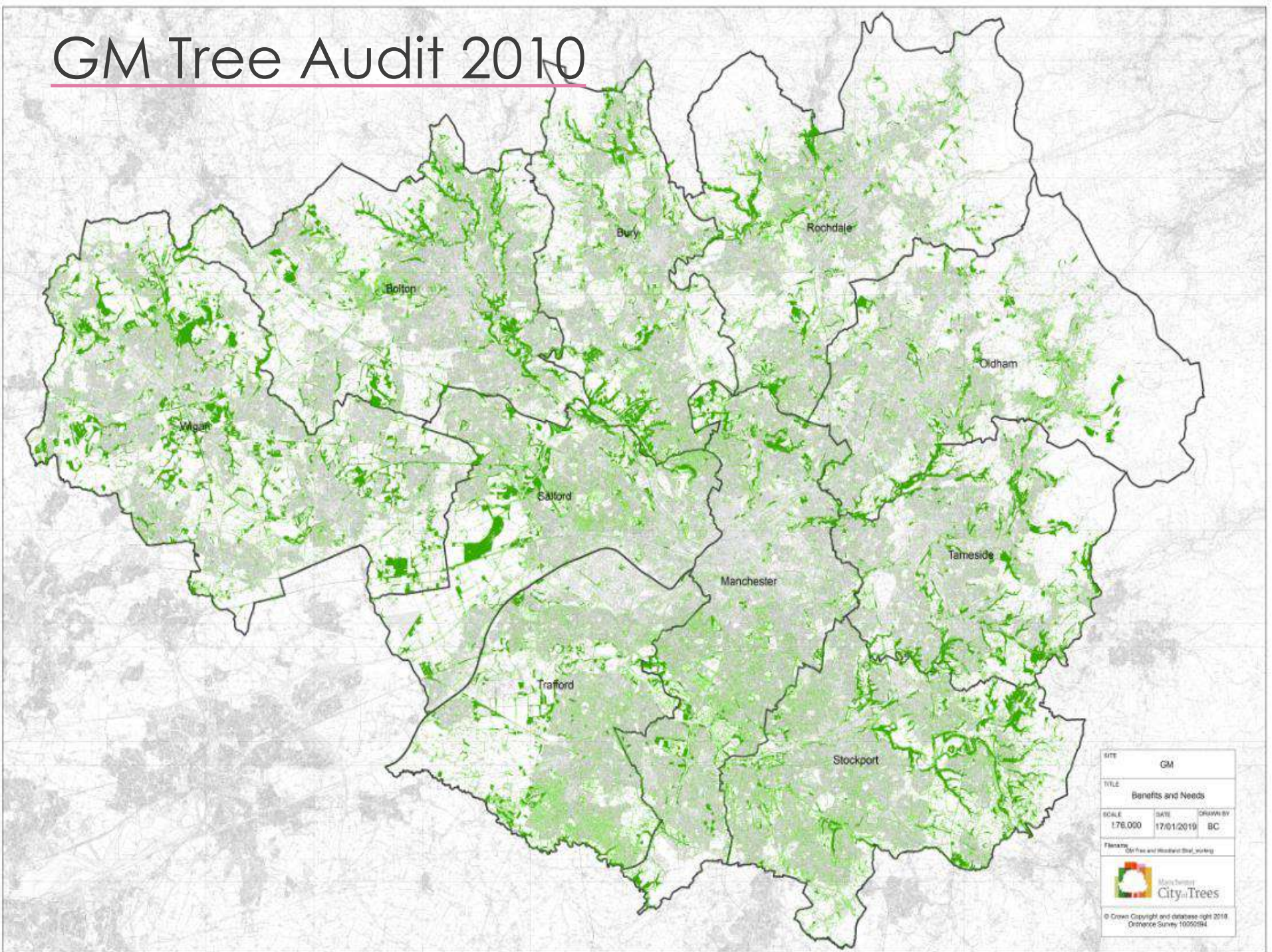
eftec, Environmental Finance and Countryside
to
Greater Manchester Combined Authority (GMCA)





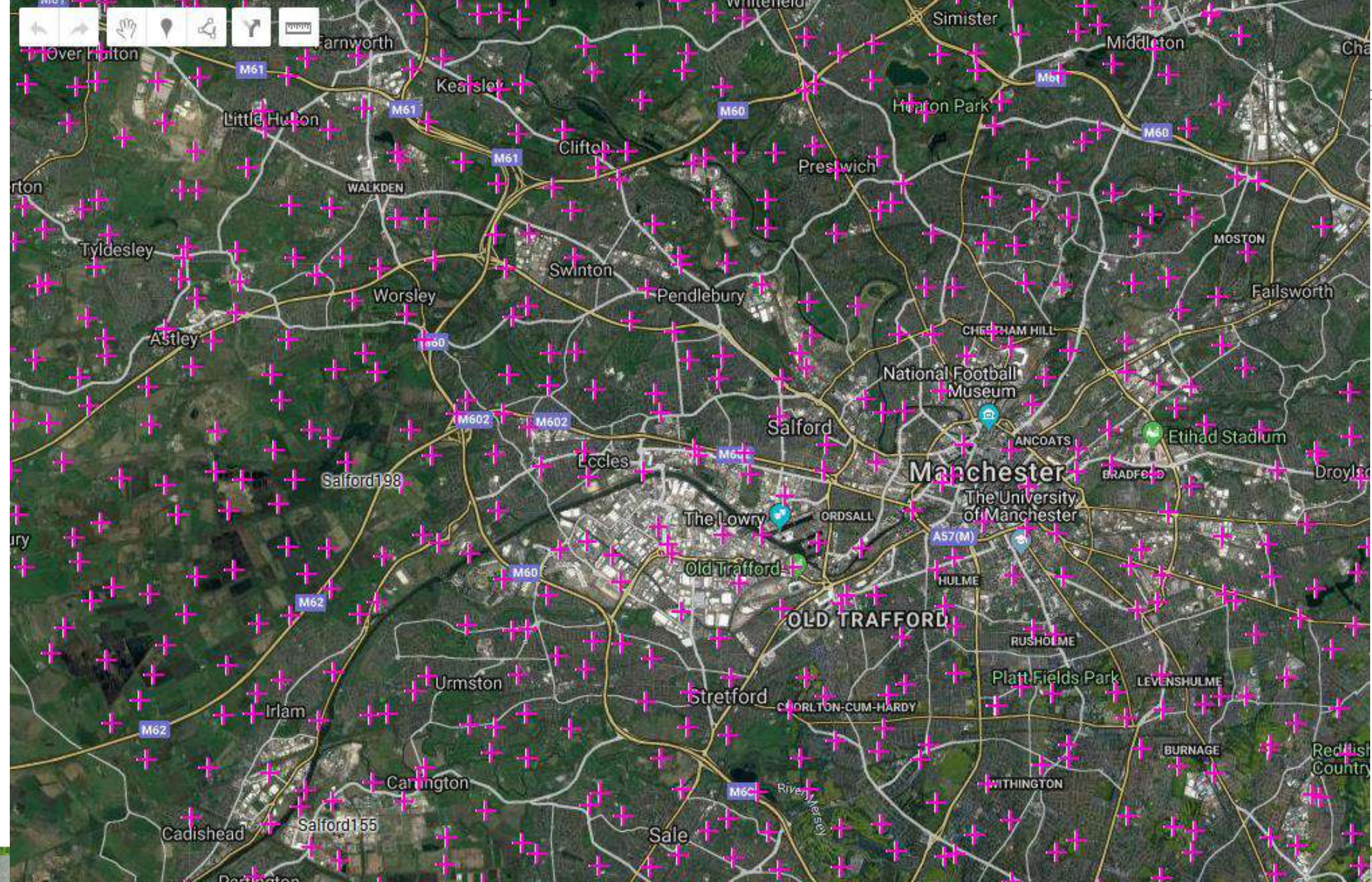
GM Tree Audit 2010

GREENTREES
MANCHESTER



SITE	GM		
TITLE	Benefits and Needs		
SCALE	DATE	DRAWN BY	
1:76,000	17/01/2019	BC	
Filename	GM Trees and Woodland Data_working		
			
© Crown Copyright and database right 2018 Ordnance Survey 10002984			





TREES
MANCHESTER

There are an estimated **11,321,386 trees** in Greater Manchester, which equates to just **15.7%** tree canopy cover.



Manchester
City of Trees

#AllOurTrees

STATISTIC #4

The most common species of trees in Greater Manchester are **Hawthorn**, **Sycamore** and **English Oak**.



Manchester
City of Trees

#AllOurTrees

STATISTIC #5

Trees in Greater Manchester remove **847 tonnes** of pollutants from our air each year.



Manchester
City of Trees

#AllOurTrees

STATISTIC #7

Trees intercept **1,644,415m³** of stormwater runoff per year in Greater Manchester.



Manchester
City of Trees

#AllOurTrees

Greater Manchester's trees sequester **56,530 tonnes** of carbon each year.

The current carbon storage of all trees is **1,573,013 tonnes.**



Manchester
City of Trees

#AllOurTrees

STATISTIC #1

The total annual economic value of air pollution filtration, stormwater attenuation and carbon sequestration in Greater Manchester's trees is **£33,298,891.**



Manchester
City of Trees

#AllOurTrees

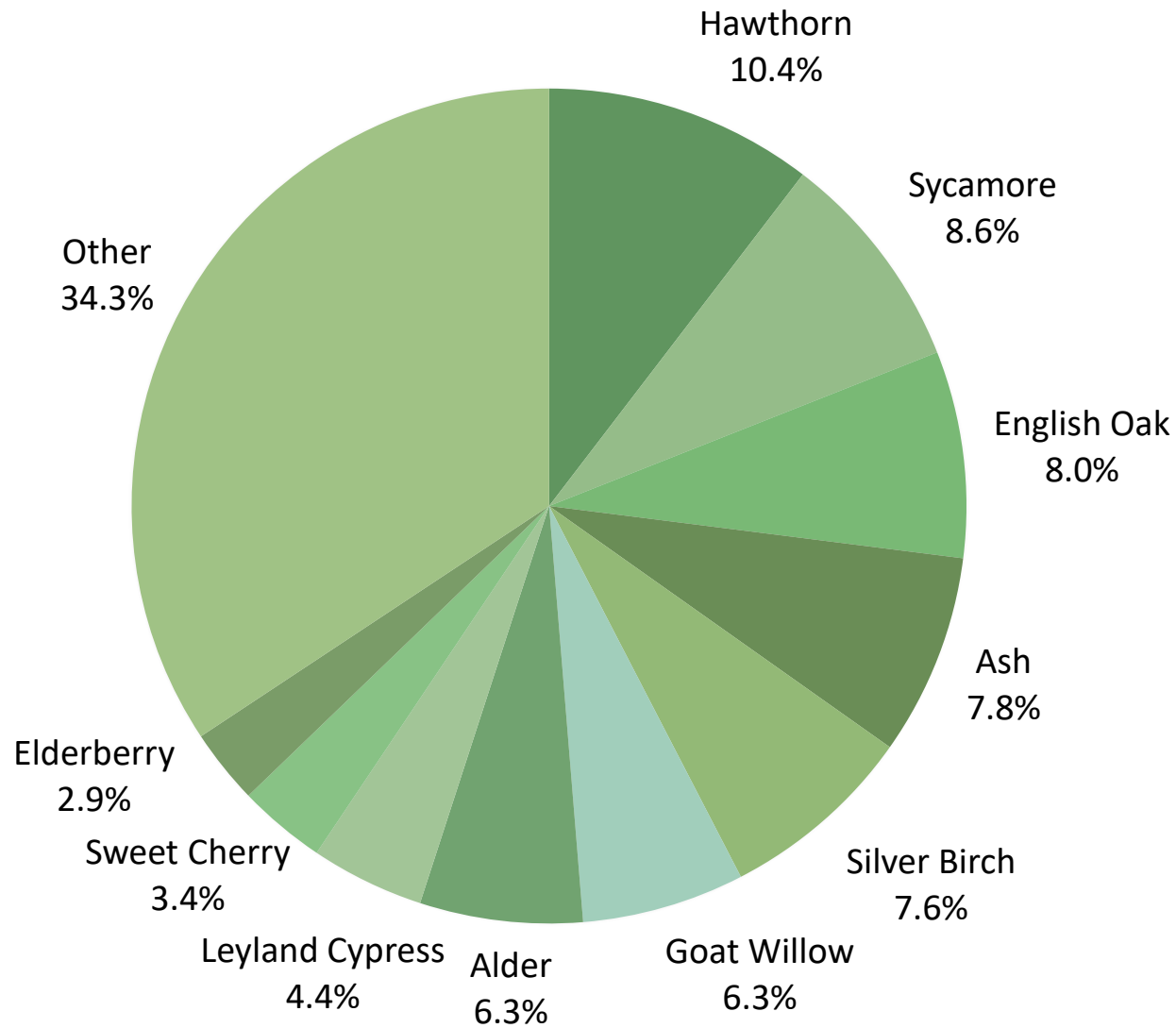
STATISTIC #8

Approx. **1 million trees** are in danger of being lost in Greater Manchester due to pests and diseases such as Ash Dieback and Horse Chestnut Bleeding Canker.

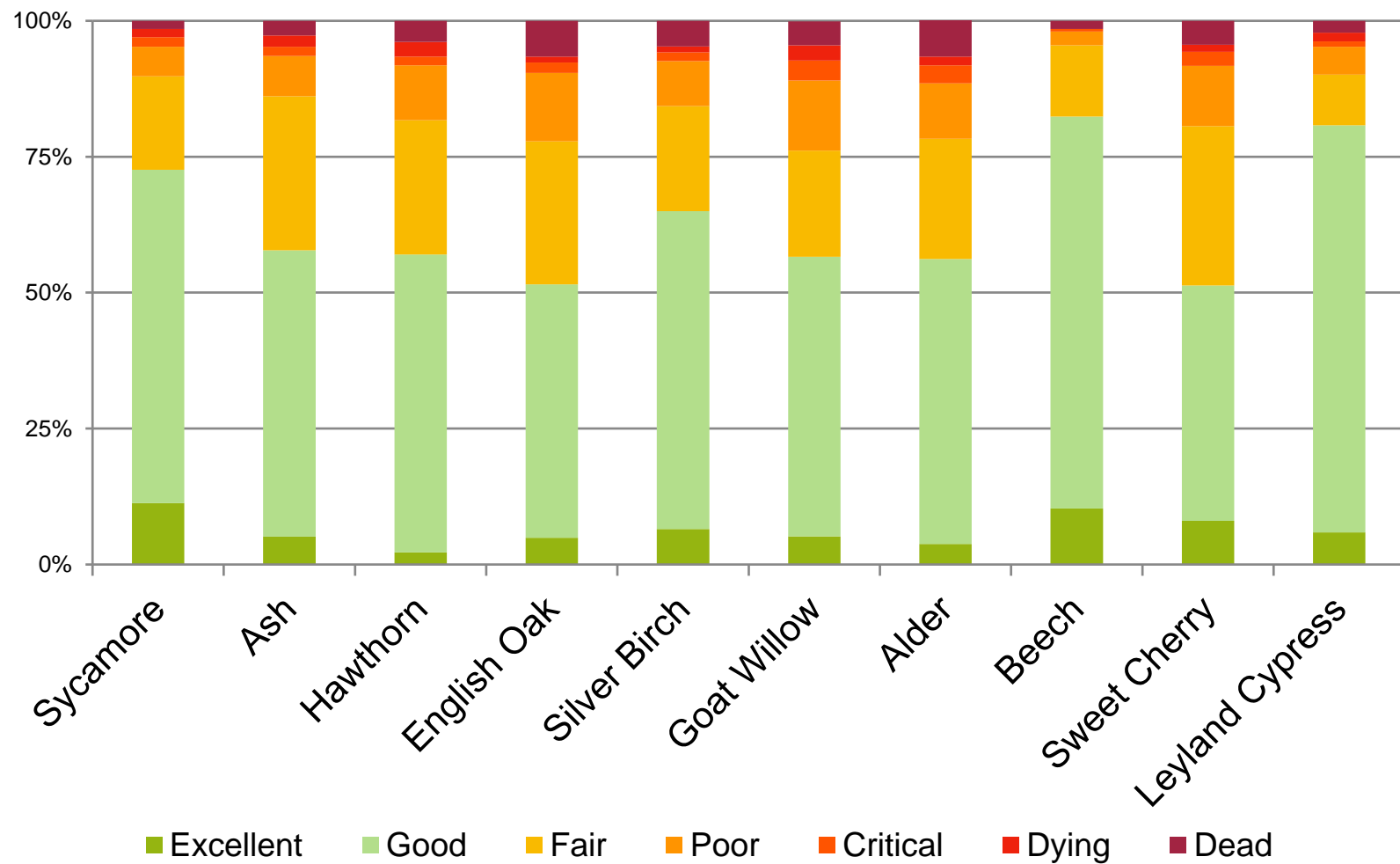


Manchester
City of Trees

#AllOurTrees



Species	% Population	% Leaf Area	Dominance Value
Sycamore	8.6	16.9	25.5
Ash	7.8	8.8	16.6
Hawthorn	10.4	5.6	16
English Oak	8	7.8	15.7
Silver Birch	7.6	6	13.6
Goat Willow	6.3	5.6	12
Alder	6.3	4.7	11
Beech	2.8	7.7	10.5



All Our Trees

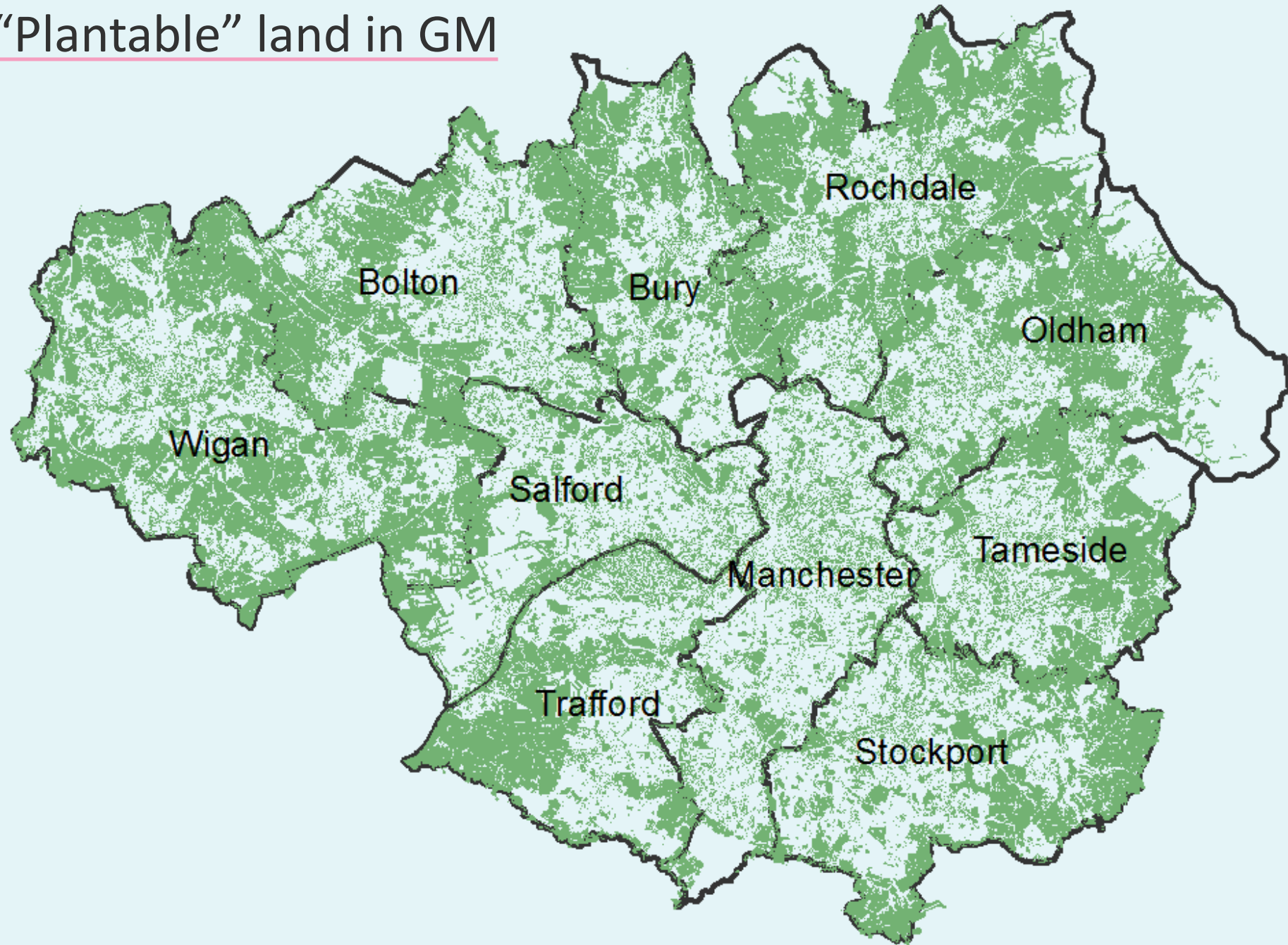
Greater Manchester's Tree and Woodland Strategy

Contents

Summary	3
Document History.....	4
Acknowledgements	5
Foreword.....	6
A Tree and Woodland Strategy for GM - Background and Introduction	7
0.1 Importance of trees.....	7
0.2 Vision for Greater Manchester	8
0.3 Why do we need a plan?.....	9
0.4 The Policy Context	10
Part 1 - Protecting and increasing the benefits from our trees - The strategy.....	11
1.1 Aims	11
1.2 Objectives.....	11
1.3 Principles	12
1.4 Delivering the strategy – Our collective action.....	12
1.5 Funding – how can we fund all our trees?.....	14
1.6 Monitoring this strategy – how will we know if we are succeeding	15
1.7 Final Message	16
Part 2 – Greater Manchester's Trees – The Evidence Base	17
1. Why are trees so important?.....	17
2. Manchester's Urban Forest	20
2.1. A little history	20
2.2. Distribution of GM's Trees	20
2.3. What are our trees doing for us?.....	24
Part 3 - Where do we need more trees?	35
3.1 Background.....	35
3.2 The maps.....	35
3.3 Methodology.....	50
Part 4 - Guidance and Standards - Getting more from our trees	51
4.1. How we value our Trees and Woodlands.....	51

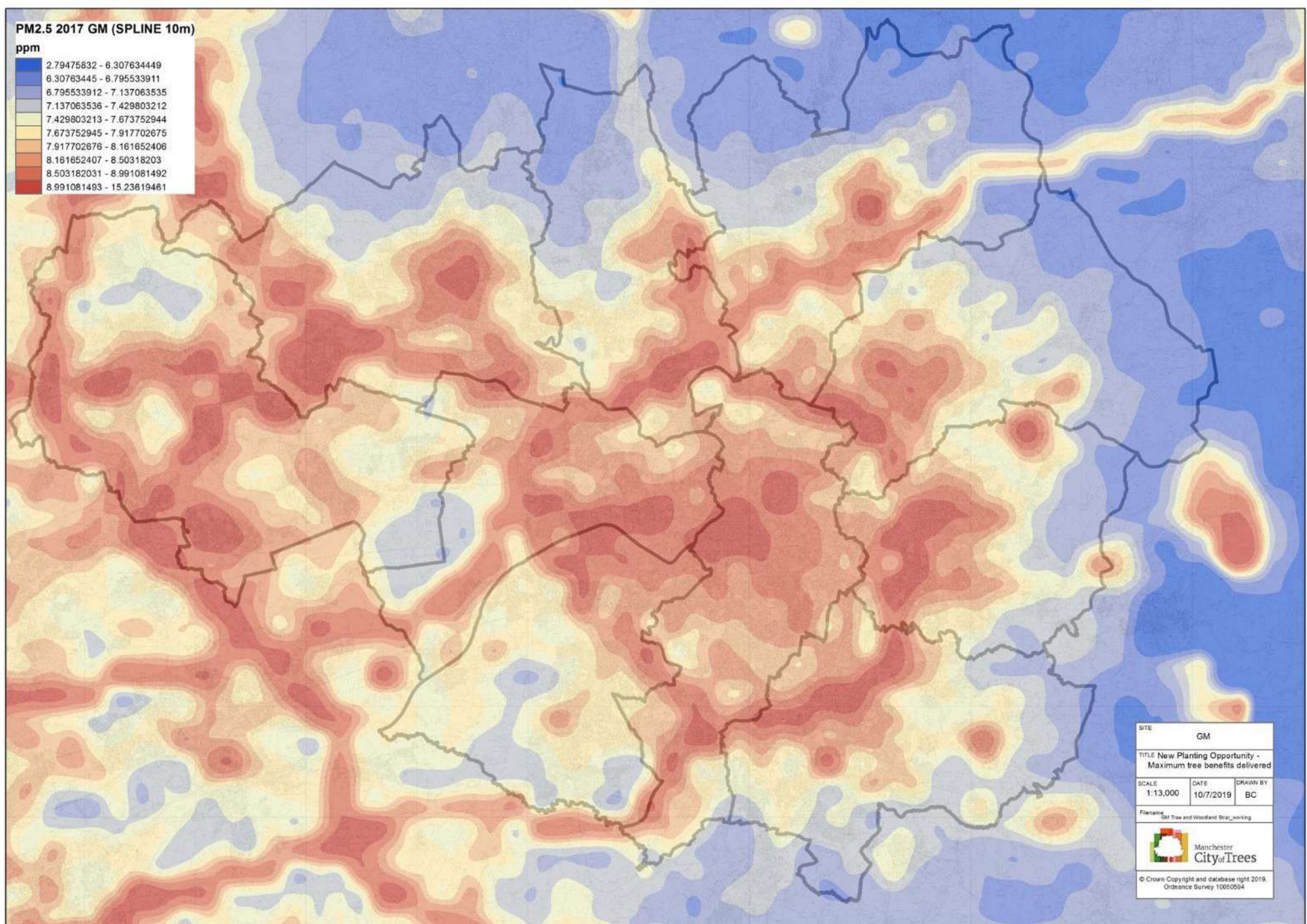
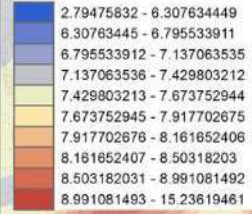


“Plantable” land in GM



PM2.5 2017 GM (SPLINE 10m)




ppm

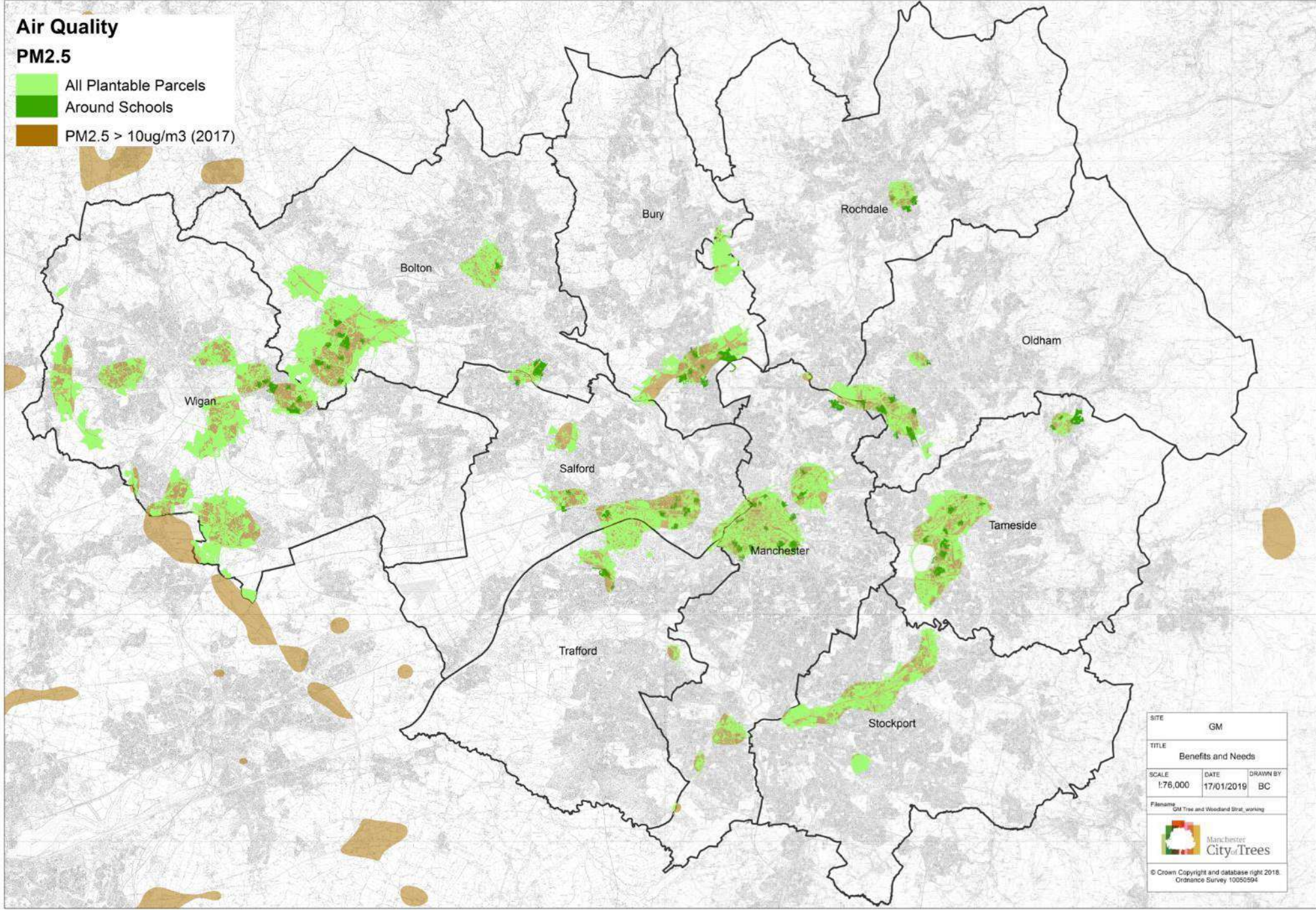


SITE	GM		
TITLE	New Planting Opportunity - Maximum tree benefits delivered		
SCALE	DATE	DRAWN BY	
1:13,000	10/7/2019	BC	
Filename	GM Tree and Woodland Strat_working		
			
© Crown Copyright and database right 2019. Ordnance Survey 1000594			

Air Quality

PM2.5

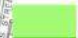


-  All Plantable Parcels
-  Around Schools
-  PM2.5 > 10ug/m3 (2017)

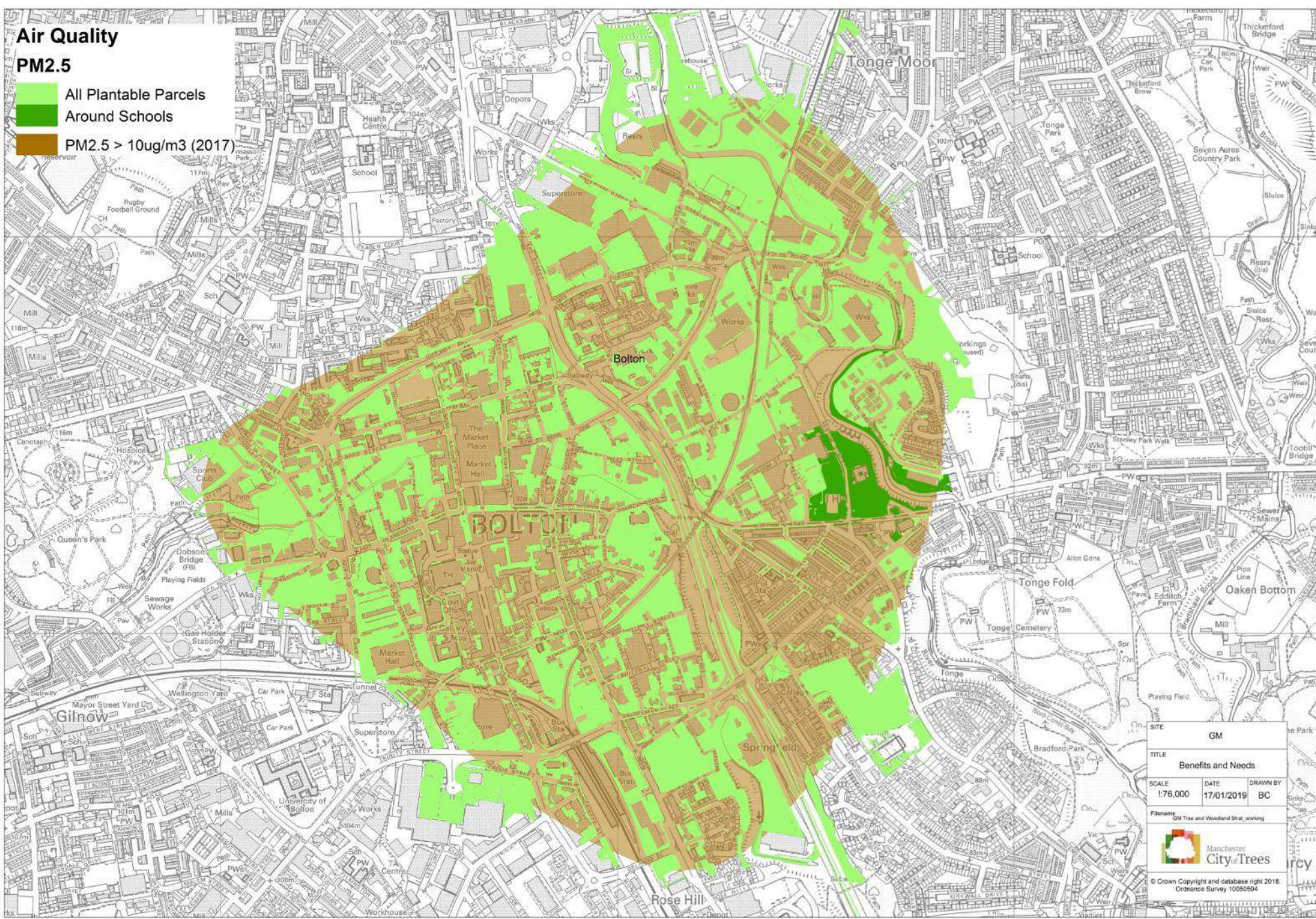



SITE			GM
TITLE			Benefits and Needs
SCALE	DATE	DRAWN BY	
1:76,000	17/01/2019	BC	
Filename GM Tree and Woodland Strat_working			
			
© Crown Copyright and database right 2018. Ordnance Survey 10005094			

Air Quality

PM2.5

-  All Plantable Parcels
-  Around Schools
-  PM2.5 > 10ug/m3 (2017)

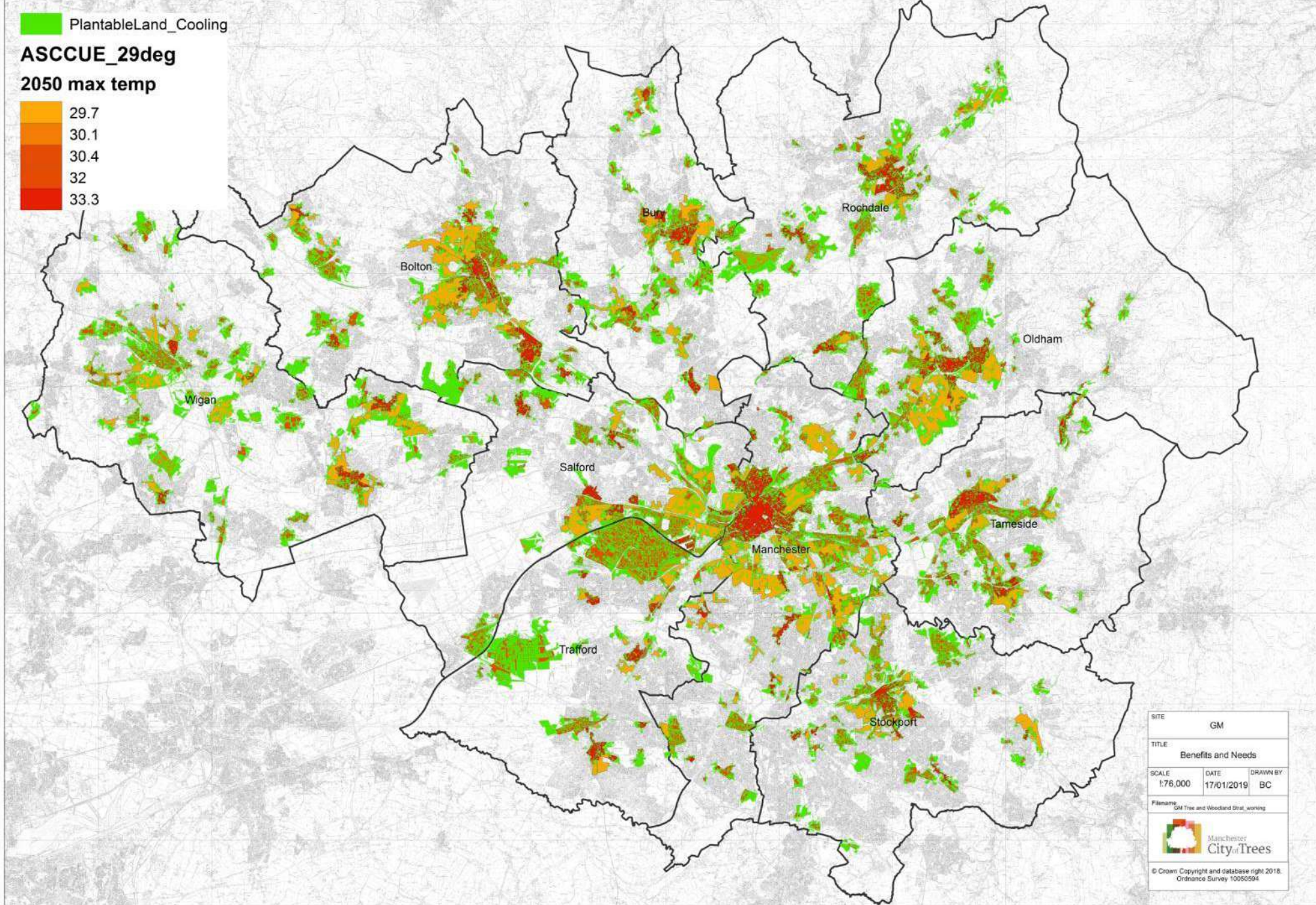
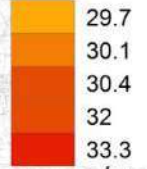


SITE	GM		
TITLE	Benefits and Needs		
SCALE	1:76,000	DATE	17/01/2019
		DRAWN BY	BC
Filename	GM Tree and Woodland Strat_working		
			
© Crown Copyright and database right 2018. Ordnance Survey 10005094			

PlantableLand_Cooling

ASCCUE_29deg

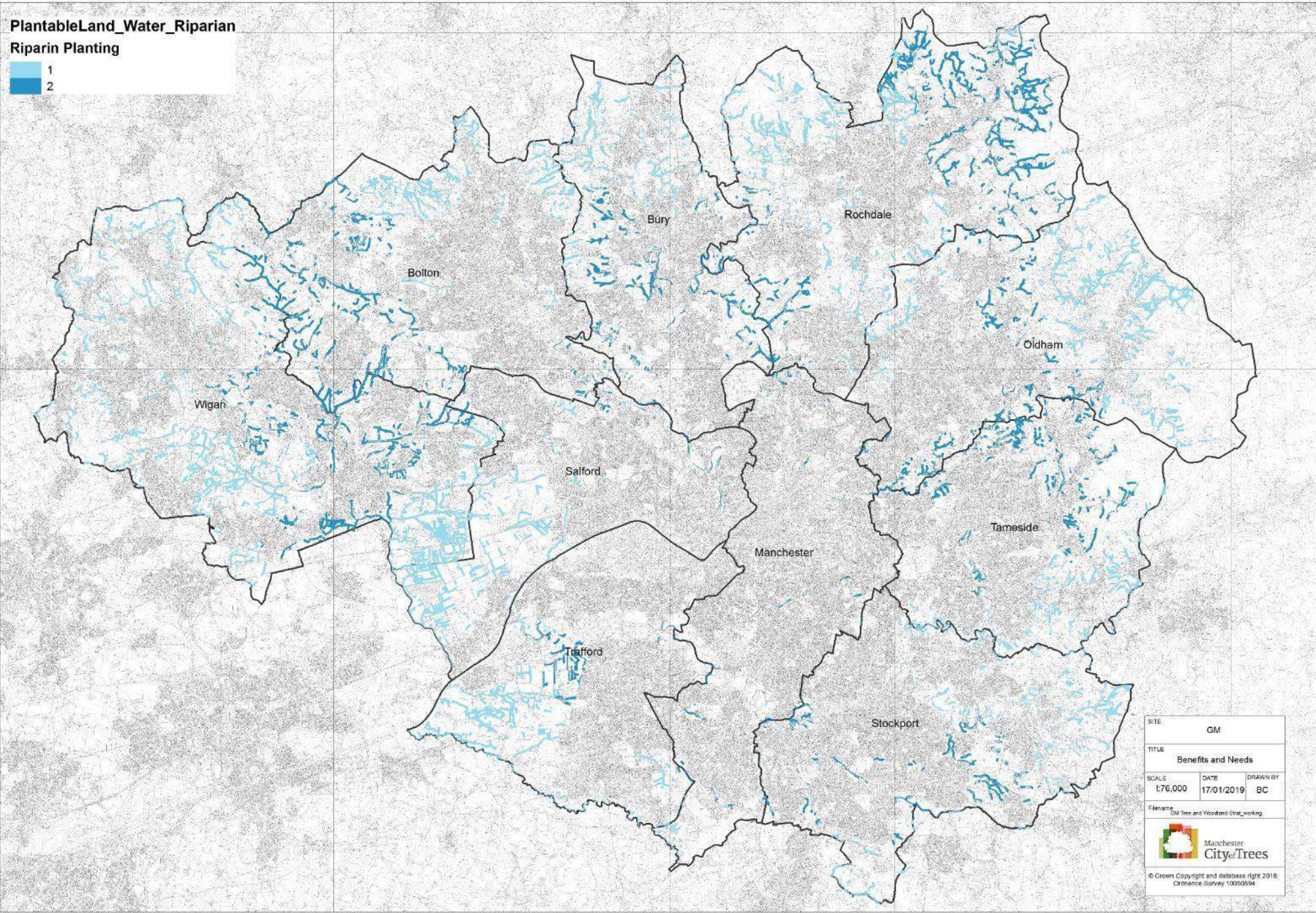
2050 max temp



SITE			GM
TITLE			Benefits and Needs
SCALE	DATE	DRAWN BY	
1:76,000	17/01/2019	BC	
Filename: GM Tree and Woodland Strat_working			
© Crown Copyright and database right 2018. Ordnance Survey 10005094			

PlantableLand_Water_Riparian

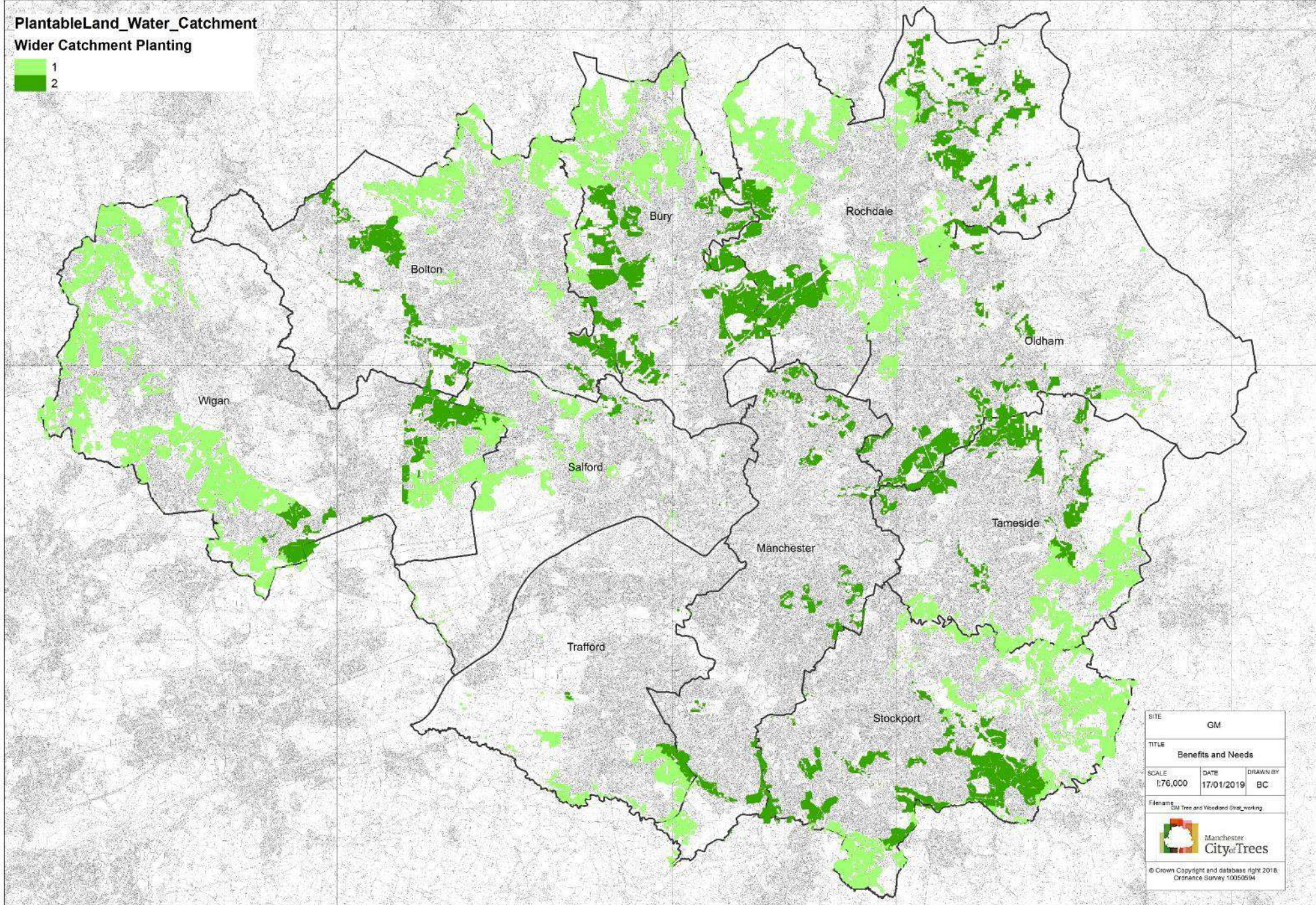
Riparin Planting



SITE			GM
TITLE			Benefits and Needs
SCALE	DATE	DRAWN BY	
1:76,000	17/01/2019	BC	
Filename GM Tree and Woodland Strat_working			
			
© Crown Copyright and database right 2018 Ordnance Survey 100050904			

PlantableLand_Water_Catchment

Wider Catchment Planting



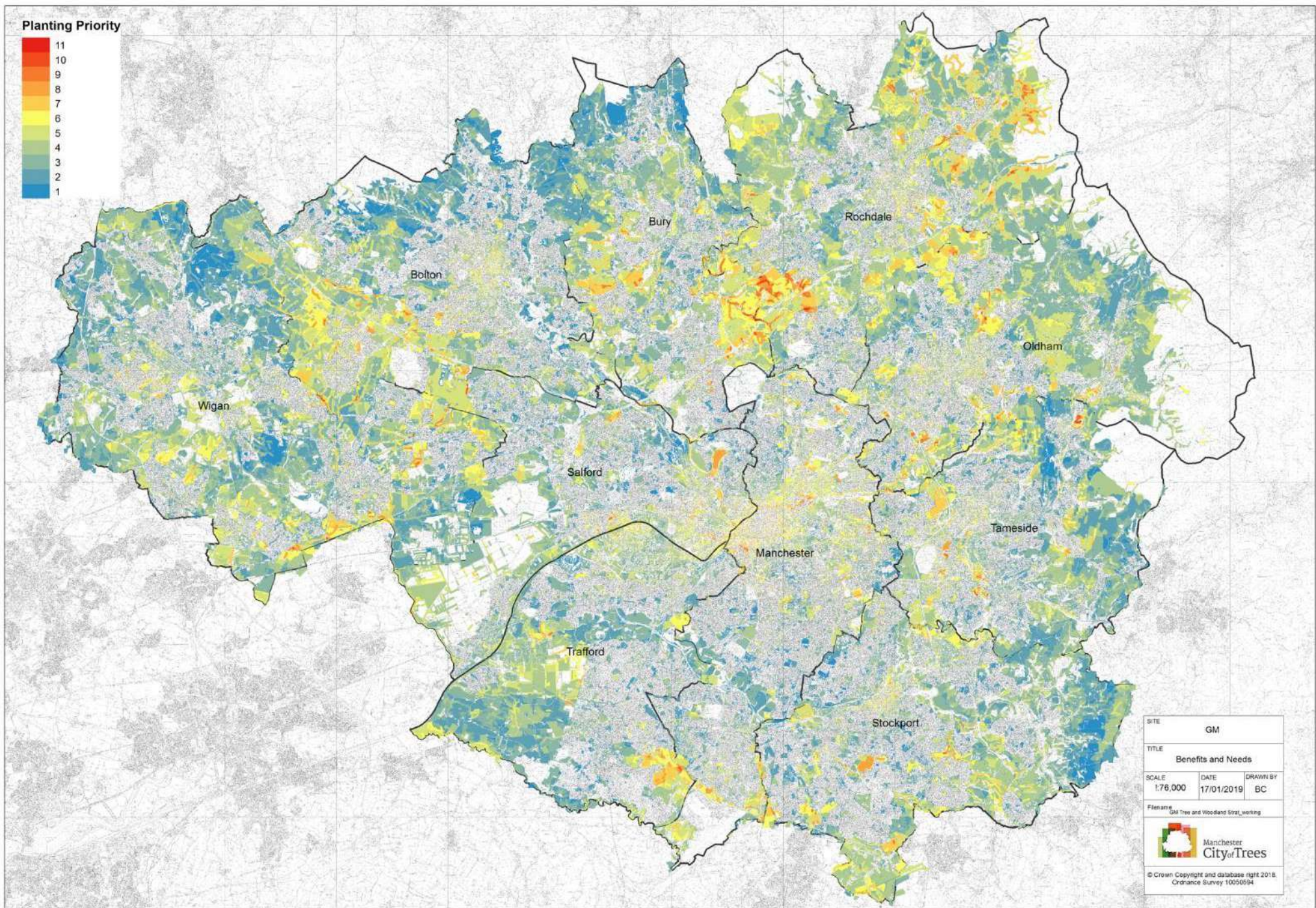
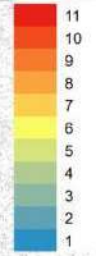
SITE			GM
TITLE			Benefits and Needs
SCALE	DATE	DRAWN BY	
1:76,000	17/01/2019	BC	
Filename GM_Tree_and_Wooded_Street_working			
 Manchester City of Trees			
© Crown Copyright and database right 2018. Ordnance Survey 100050594			

Planting for Surface Water



SITE		GM	
TITLE			
Benefits and Needs			
SCALE	DATE	DRAWN BY	
1:76,000	17/01/2019	BC	
Filename			
GM Tree and Woodland Strat_working			
			
© Crown Copyright and database right 2018. Ordnance Survey 10005094			

Planting Priority



SITE			GM		
TITLE			Benefits and Needs		
SCALE	DATE	DRAWN BY			
1:76,000	17/01/2019	BC			
Filename GM Tree and Woodland Strat_working					
			Manchester City of Trees		
© Crown Copyright and database right 2018. Ordnance Survey 100050594					



Planting Priority



SITE			GM
TITLE			Benefits and Needs
SCALE	DATE	DRAWN BY	
1:76,000	17/01/2019	BC	
Filename GM Tree and Woodland Stral_working			
 Manchester City of Trees			
<small>© Crown Copyright and database right 2018. Ordnance Survey 10005094</small>			

All Our Trees

Greater Manchester's Tree and Woodland Strategy

Contents

Summary	2
Document History.....	3
Acknowledgements	4
Foreword.....	5
A Tree and Woodland Strategy for GM - Background and Introduction	6
Part 1 - Protecting and increasing the benefits from our trees - The strategy	10
Part 2 – Greater Manchester's Trees – The Evidence Base	16
Part 3 - Where do we need more trees?.....	34
Part 4 - Guidance and Standards - Getting more from our trees	50
References.....	94

All Our Trees

Greater Manchester's Tree and Woodland Strategy

Contents

Summary	2
Document History.....	3
Acknowledgements	4
Foreword	5
A Tree and Woodland Strategy for GM - Background and Introduction	6
Part 1 - Protecting and increasing the benefits from our trees - The strategy	10
Part 2 – Greater Manchester's Trees – The Evidence Base	16
Part 3 - Where do we need more trees?.....	34
Part 4 - Guidance and Standards - Getting more from our trees	50
References.....	94

All Our Trees

Greater Manchester's Tree and Woodland Strategy

Contents

Summary	2
Document History.....	3
Acknowledgements	4
Foreword	5
A Tree and Woodland Strategy for GM - Background and Introduction	6
Part 1 - Protecting and increasing the benefits from our trees - The strategy	10
Part 2 – Greater Manchester's Trees – The Evidence Base	16
Part 3 - Where do we need more trees?	34
Part 4 - Guidance and Standards - Getting more from our trees	50
References.....	94

All Our Trees

Greater Manchester's Tree and Woodland Strategy

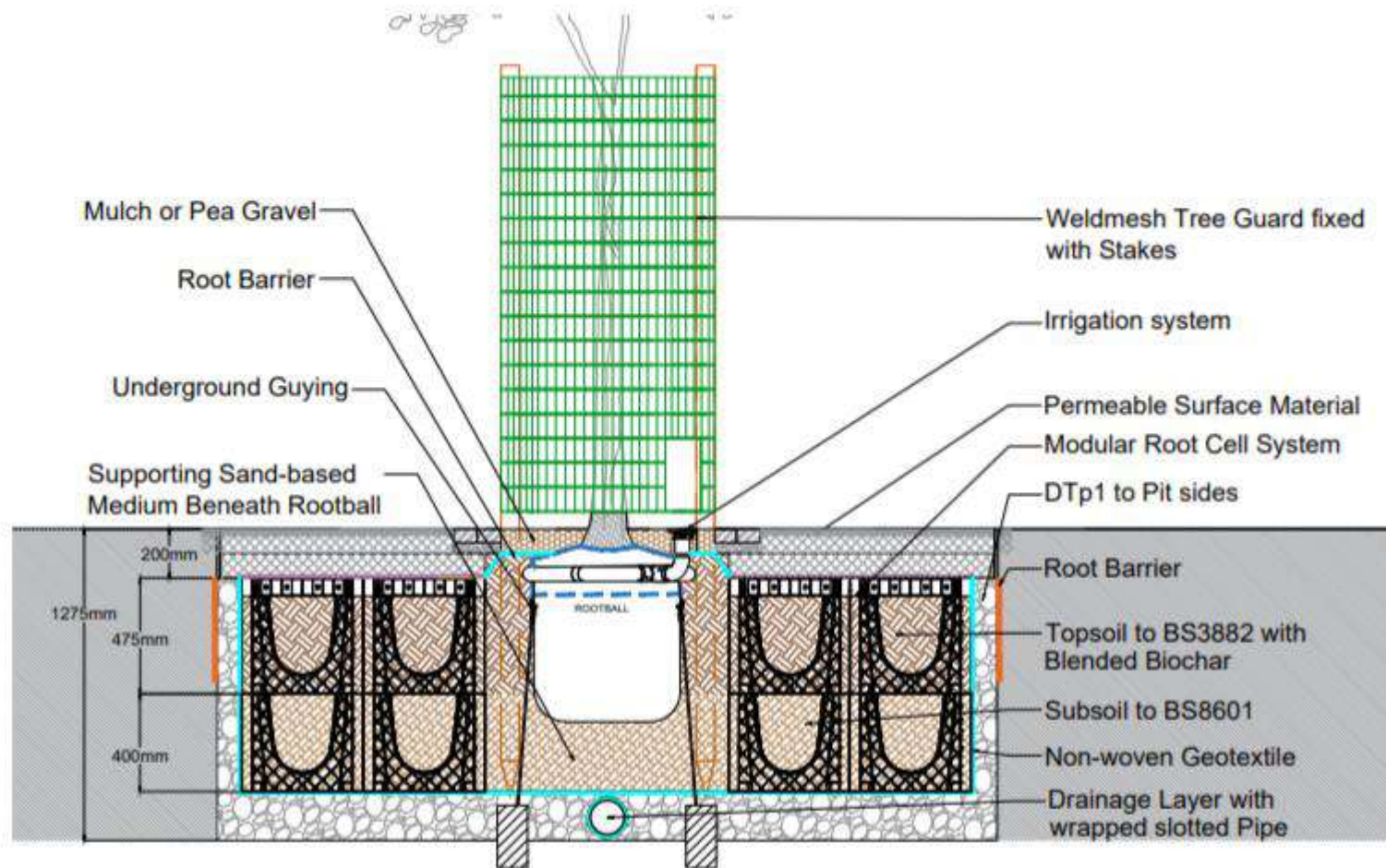
Contents

Summary	2
Document History.....	3
Acknowledgements	4
Foreword	5
A Tree and Woodland Strategy for GM - Background and Introduction	6
Part 1 - Protecting and increasing the benefits from our trees - The strategy	10
Part 2 – Greater Manchester's Trees – The Evidence Base	16
Part 3 - Where do we need more trees?	34
Part 4 - Guidance and Standards - Getting more from our trees	50
References.....	94

Tree pit components

The drawing below is not meant to be used as a guide with respect to appropriate tree pit dimensions. However, the infrastructure it contains combined with a good rooting volume will help to create the conditions needed for sustainable tree growth.

TREE PIT DETAIL – HARD LANDSCAPES – AFTER PGLA LANDSCAPE ARCHITECTS



Thank you



bryan@cityoftrees.org.uk