

The National Tree Warden Scheme

Samantha Village
National Tree Warden Scheme Coordinator



Working together for the love of trees

The Tree Council brings everyone together with a shared mission to care for trees and our planet's future.

We inspire and empower organisations, government, communities and individuals with the knowledge and tools to create positive, lasting change at a national and local level.

Going strong, 50 years on!

1973
'Plant a Tree in 1973' campaign

1974



1974
TTC launched
First National
Tree Week

1990



2020



2023
'Plant a Tree
in '23' ?



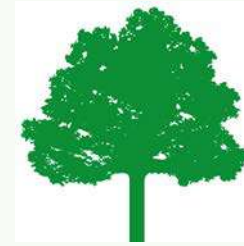
What we do



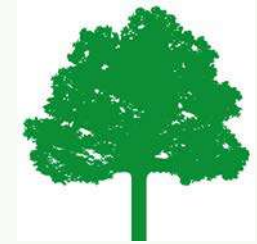
PRACTICAL SCIENCE
& RESEARCH



COMMUNITY
GRANTS



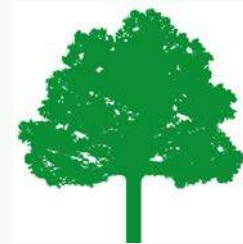
NATIONAL
POLICY
ENGAGEMENT



NATIONAL
SCHOOLS
PROGRAMME



NATIONAL VOLUNTEER
TREE WARDEN SCHEME



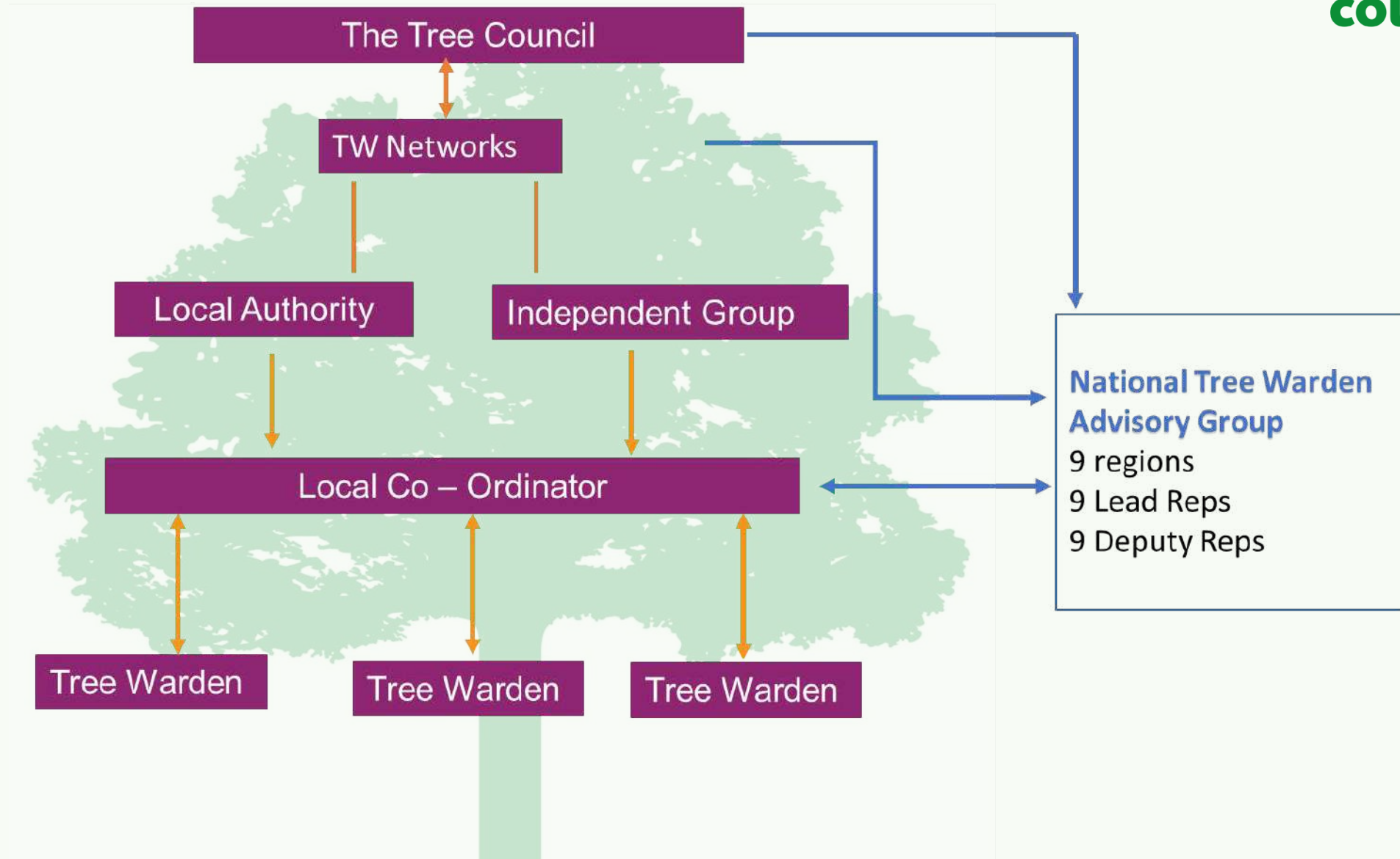
TREE PLANTING
& CARE

National Tree Warden Scheme

A network of fantastic volunteer
tree champions around the country



How does it work?



WHAT CAN A TREE WARDEN DO?



Tree Planting and after care

- Identify opportunities
- Planting plans and preparations
- Formative tree pruning
- Hedgerows and hedgerow trees
- Aftercare



WHAT CAN A TREE WARDEN DO?



Recording and Monitoring

- Mapping tree cover
- Tree inventories
- Local Neighbourhood Plans
- Tree health monitoring
- Comment on TPOS applications and Development plans

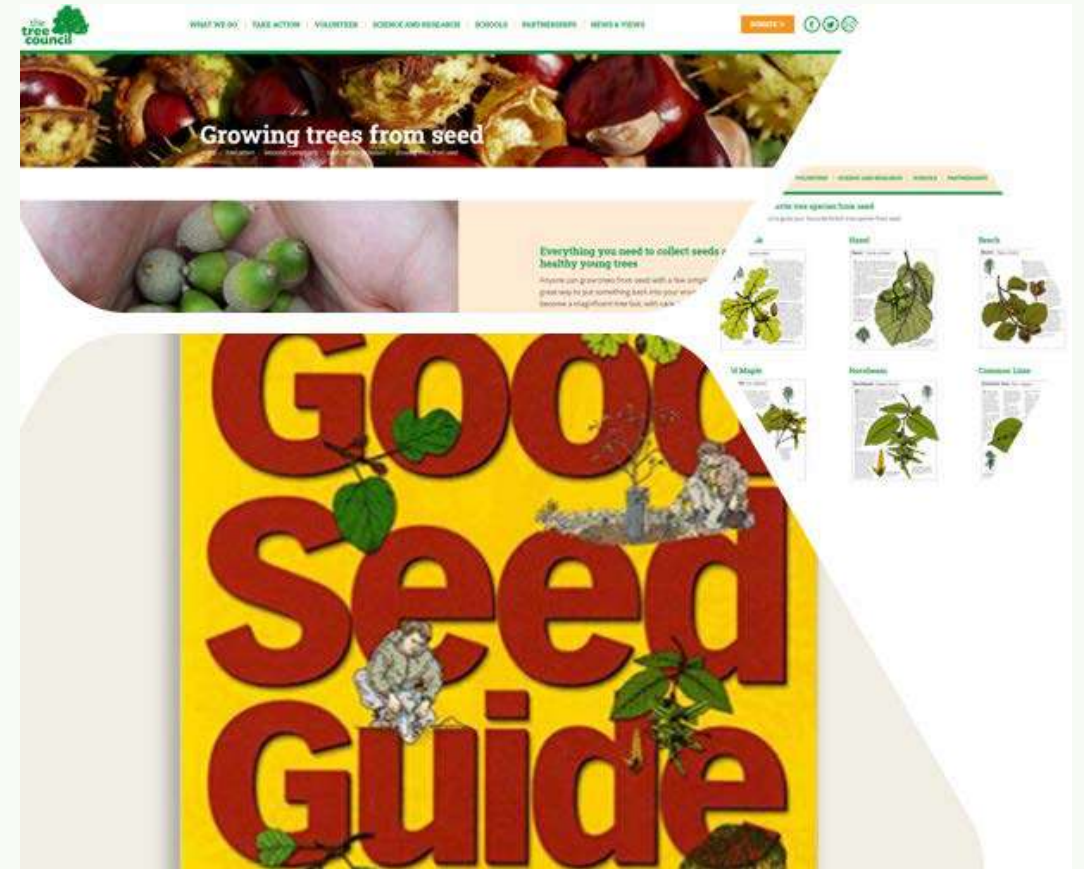


WHAT CAN A TREE WARDEN DO?



Growing Trees from Seed

- Seed gathering and germinating
- Growing on
- Establish community tree nurseries
- Link to local planting projects
- Local provenance
- 'Save a Sapling' schemes



Benefits to Local Authorities

Local authority Priority	Tree Warden support
Tree and Woodland Strategies	<ul style="list-style-type: none"> • TWs can help in the preparation of policies
Climate change strategies	<ul style="list-style-type: none"> • Organise and deliver community tree planting projects circa 7.5millions trees planted by TWs last 30years
Flood Management - Alleviation schemes	<ul style="list-style-type: none"> • Organise and deliver community tree planting projects • Raise awareness with landowners and farmers
Healthy schools & Eco-Schools programmes	<ul style="list-style-type: none"> • Raise awareness • Mentor Young Tree Champions (UK wide TTC initiative) • Planting and after care • Schools Orchards – links to TTC National Programme • Edible hedges
Tree Ownership responsibilities	<ul style="list-style-type: none"> • Basic tree health inspections • Support LA Ash Die back Action Plans
Biodiversity Strategies	<ul style="list-style-type: none"> • Biodiversity opportunity mapping • Hedgerow planting – connectivity / wildlife corridors

Community Action Focused Campaigns



Seed Gathering Season
23 SEPTEMBER - 23 OCTOBER



National Tree Week
28 November - 6 December



Tree Care Campaign
31 MARCH - 21 SEPTEMBER



Walk in the Woods
1 MAY - 31 MAY

As a Tree Warden member network you receive:



- Support and advice about setting up and running a new Tree Warden network
- Monthly 'Branching Out' e-newsletter
- Access to Community Grant funding for tree planting projects
- Access to regional Tree Warden Forums & Coordinator conferences
- Access to new Tree Council core training materials
- Tree Warden branding and use of the 'Tree Warden Scheme' logo
- Access to the Tree Warden Forum Facebook page
- Your network listed on our website 'Near You' map
- Opportunities to attend national forums and debates on tree-related issues
- Tree Council advice and support on tree related matters



'The local knowledge and connection with the community that Tree Wardens have are an invaluable asset to our Council. They're often the catalyst for positive change because they understand local needs.'

West Sussex County Council



Leader of Portsmouth City Council, said:

'This is a fantastic initiative that will see a historic trail brought to life through the hard work of dedicated volunteers. I'm sure Dickens would be proud to know that this innovative project bears his name.'

'With a small budget, Tree Wardens have enabled me to secure the planning of hundreds of trees across Tendring.'

Tendring District Council, Essex



For further information please contact:

**Sam Village
National Tree Warden Scheme Coordinator**

Sam.village@treecouncil.org.uk



Working together for the love of trees