

Green-tech



Rural Tree Planting & The Evolution of Modern Tree Protection



A Brief History of Tree Shelters

- When were Tree Shelters invented?

They were invented in 1979 by Graham Tuley to protect young trees from browsing animals and accelerate tree growth by providing the tree with its own microclimate

- How many Tree Shelters are used annually?

- 1983-84 approx. 1million tree tubes were used in the UK
- By 1991 that figure reached 10m
- Last year an estimated 25m+ trees were planted using tree shelters



Traditional Tree Shelters and Their Advantages

The “traditional” tree shelter has been used for over 4 decades and has proven itself to provide several benefits.



- 1) Complete protection from animals
- 2) Protection from Herbicides
- 3) Provides a microclimate for the tree

The Importance of Protecting Young Trees

- Tree shelters are primarily used to protect from animal browsing



Biodegradable Tree Shelters

Biodegradable Tree Shelters come with their own challenges

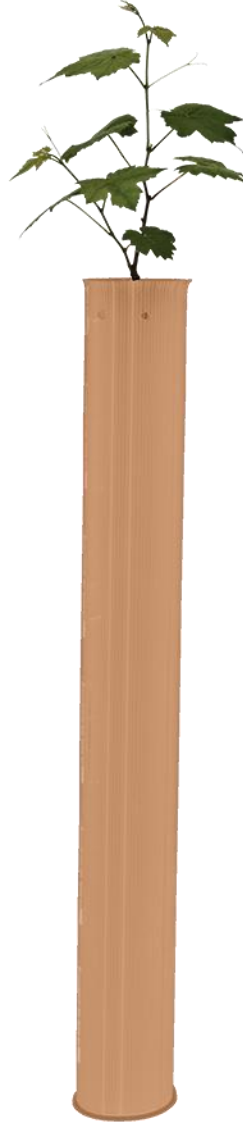
The material needs to degrade naturally and be:-

- Cost effective enough to be economically viable
- Durable enough to last the distance
- Doesn't leave an inflated carbon footprint
- Meet the needs of the industry



Plastic Free Innovation: Biodegradable tree Shelters

Biodegradable Tree Shelters



Tubex Nature
Biodegradable
Shelter



Rainbow Terra



NexGen Tree
Shelters



Tubex Nature – Rooted in Science, Derived from Nature.



- Tubex Nature™ Tree Shelter can be left to biodegrade in situ and will, over time, start to degrade and breakdown into water and CO2 through a microbiological process.
- Tubex Nature™ is the first tree shelter to combine externally tested biodegradability in soil with scale of manufacture and proven performance.
- Ideal for areas with dense woodland or limited access, Tubex Nature™ Tree Shelter is the most responsible alternative where collection and recycling is not practical.
- Manufactured using a bio-based blend, which comprises of sugarcane, corn and starch.
- NEW Range – Available in all sizes



Tubex®
Advancing growth



Rainbow Terra – The Clean Conscience Wood Shelter.



- Using PEFC/FSC wood to protect trees.
- Biodegradable in soil, freshwater and the oceans. Certified soil biodegradable by TÜV, to strict ISO standards
- 5 Year design life, breaks down in situ within 10 years.
- Class leading light transmission.
- Carbon neutral product.



rainbow
professional
shaping your environment



NexGen - Tree Shelters That Don't Cost the Earth



- Manufactured From British Wool
- Fully Biodegradable, PH and Ecotoxicity Neutral
- Breaks down to feed the soil and support the Ecosystem
- Delivered with attached Metal Ties

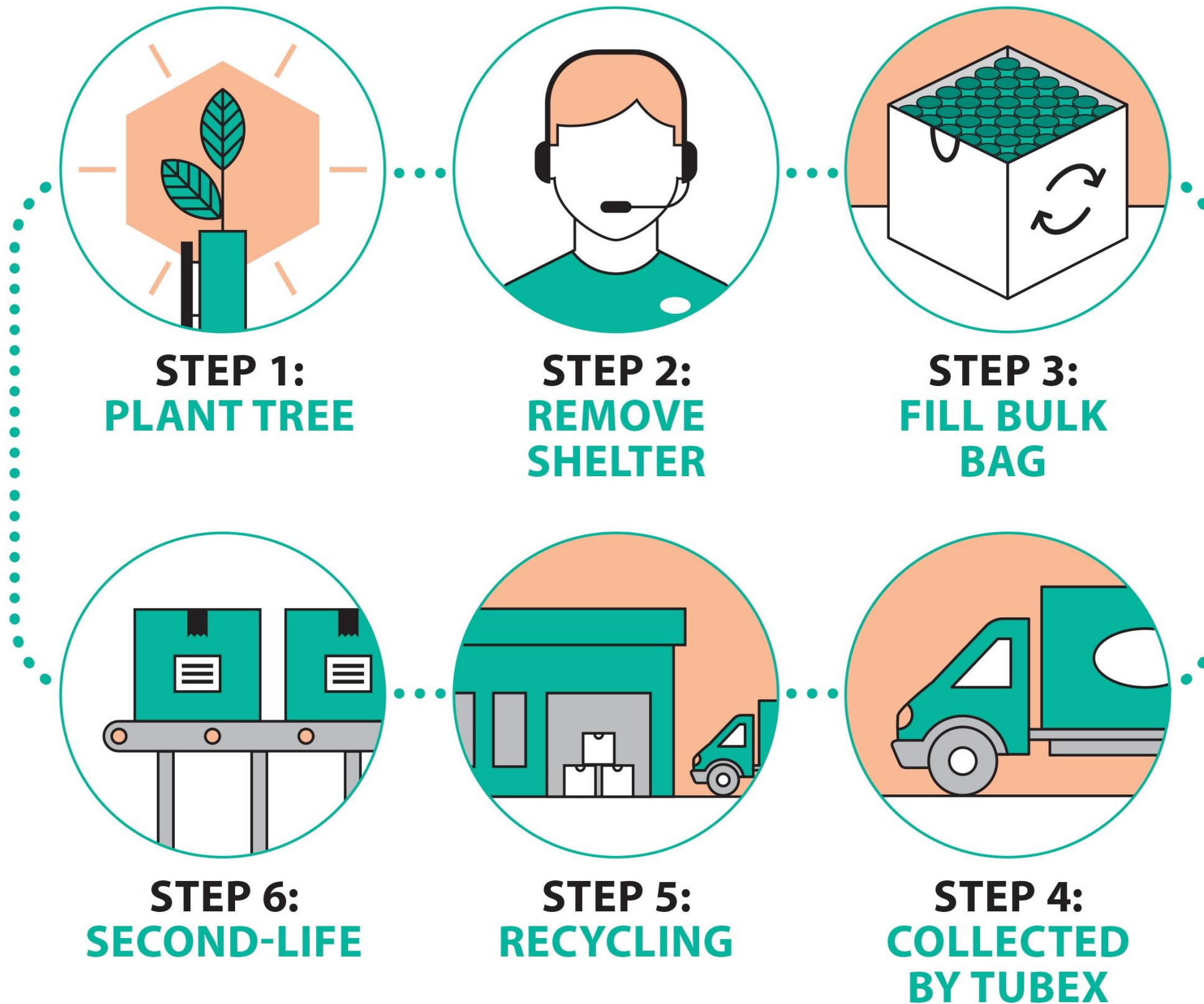


Recycling Schemes

- Manufacturers are taking responsibility of the environmental impact of their products.
- There are recycling schemes available that are offered by both Rainbow and Tubex in partnership with Green-tech Ltd.



Tubex Tree Shelter Recycling Scheme



Rainbow Spiral Recycling Scheme

HOW TO PARTICIPATE

1. Subscribe

- Estimate the number of bags required (600-700 spirals per bag; typically, 7 plants per metre hedging)
- Order bags online through the Rainbow website or through Green-tech



2. Remove

- Prepare to remove – see our removal recommendations
- Consider 20-25 min per 5 metre section

3. Collect

- Contact Rainbow or Green-tech for collection who will be back in touch with a collection date
- Please see Q&A for more details



4. Recycled

- Rainbow will handle the recycling. Products will be recycled into new spirals, PVC pipes or PVC window frames



Thank You Any Questions?

