

# “Creation of a bespoke Waste Industry training programme for managers and supervisors” – Highlighting danger and improving competence

IOSH EWMG Group

Presentation to APSE Manchester 11<sup>th</sup> February  
2015

David Thomas IOSH Vice President



# Why?

- Industry has a low level of competence
- Questionable Applicability of IOSH Managing Safety to the Waste Industry
- A real need to improve the competence of waste collection managers' and supervisors' so that they and their crews can operate safely
- No one was 'doing'
- Wish Chair "Why does IOSH not do a MS Course for Waste ..?"
- IOSH Not engaged in Waste Collection

# Issues

- Dangers
  - Machinery
  - Reversing
  - Health hazards
  - Manual handling
  - Vehicles
  - Waste Transfer Stations

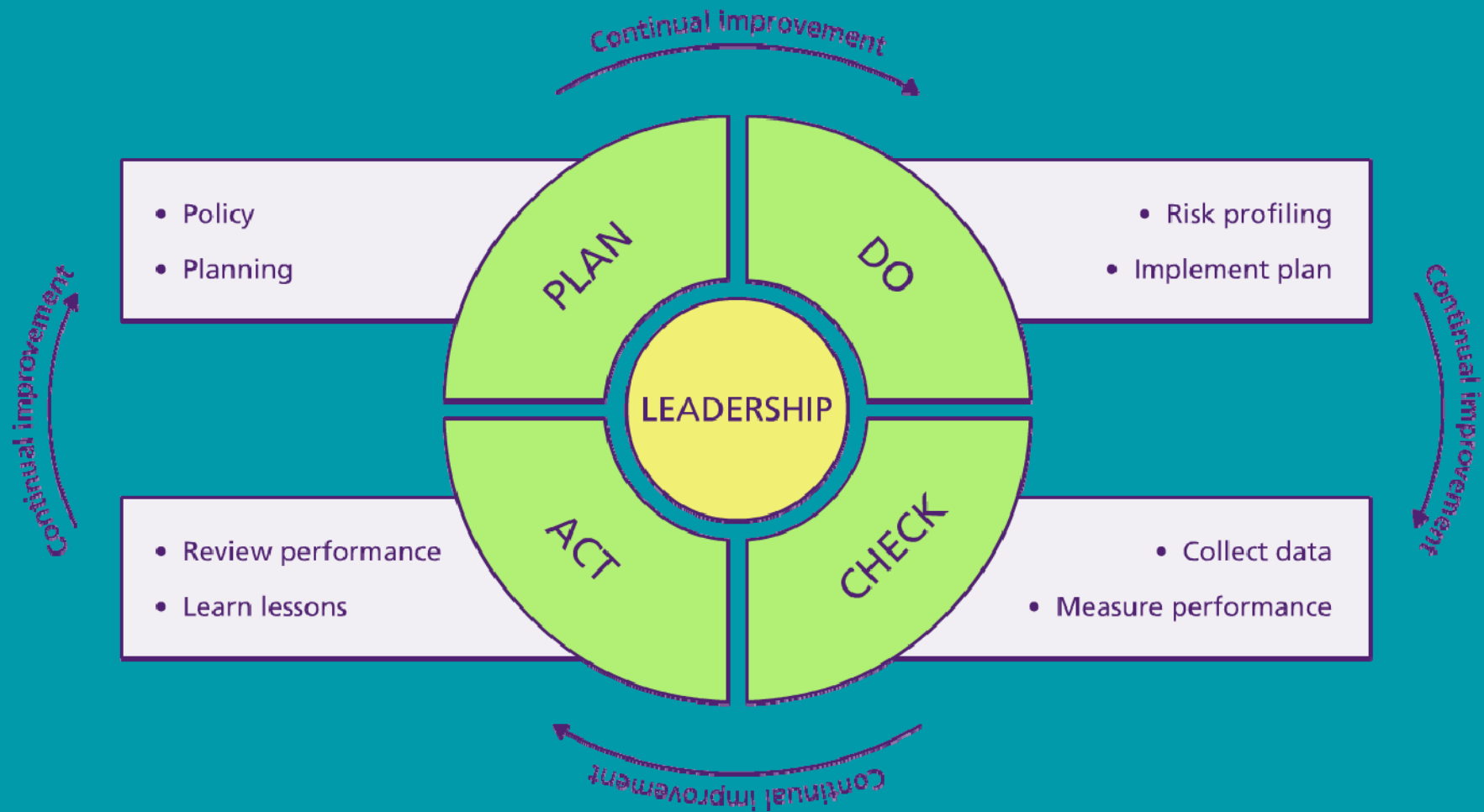
# What was needed

- Something that can respond to changing industry guidance and engagement
- A mature understanding of different risk assessment methods
- Something that can be used to develop Safe Systems Of Work
- Something that reflects the waste industry

# Audience

- Operational and contract-client managers with responsibility for the safe operation of the contract. Other suitable delegates includes:
- Waste collection Trades Union Safety Representatives
- Team Leaders
- Waste Recycling Strategy Officers
- Health and Safety Practitioners new to the Sector
- Councillors with waste in their portfolio
- Client Contract Officers/Managers
- In effect – those who have control

# Plan-Do-Check-Act



# How did we relate to Managing Safely

- Module 1 – Introducing managing safely
- Module 2– Assessing risks
- Module 3 – Controlling risks
- Module 4 – Understanding your responsibilities
- Module 5 – Identifying hazards
- Module 6 - Investigating accidents and Incidents
- Module 7 - Measuring performance
- Module 8- Protecting our environment

# What did we feel was important

- Module 1 – Introducing managing safely
- **Module 5 – Identifying hazards**
- Module 2– Assessing risks
- Module 3 – Controlling risks
- Module 4 – Understanding your responsibilities
- Module 6 - Investigating accidents and Incidents
- Module 7 - Measuring performance
- ~~= Module 8 – Protecting our environment~~



# Risk Assessment- Current

		Potential severity of harm		
		Slightly Harmful 1	Harmful 2	Extremely Harmful 3
Likelihood of harm occurring	Highly unlikely 1	Trivial 1	Tolerable 2	Moderate 3
	Unlikely 2	Tolerable 2	Moderate 4	Substantial 6
	Likely 3	Moderate 3	Substantial 6	Intolerable 9

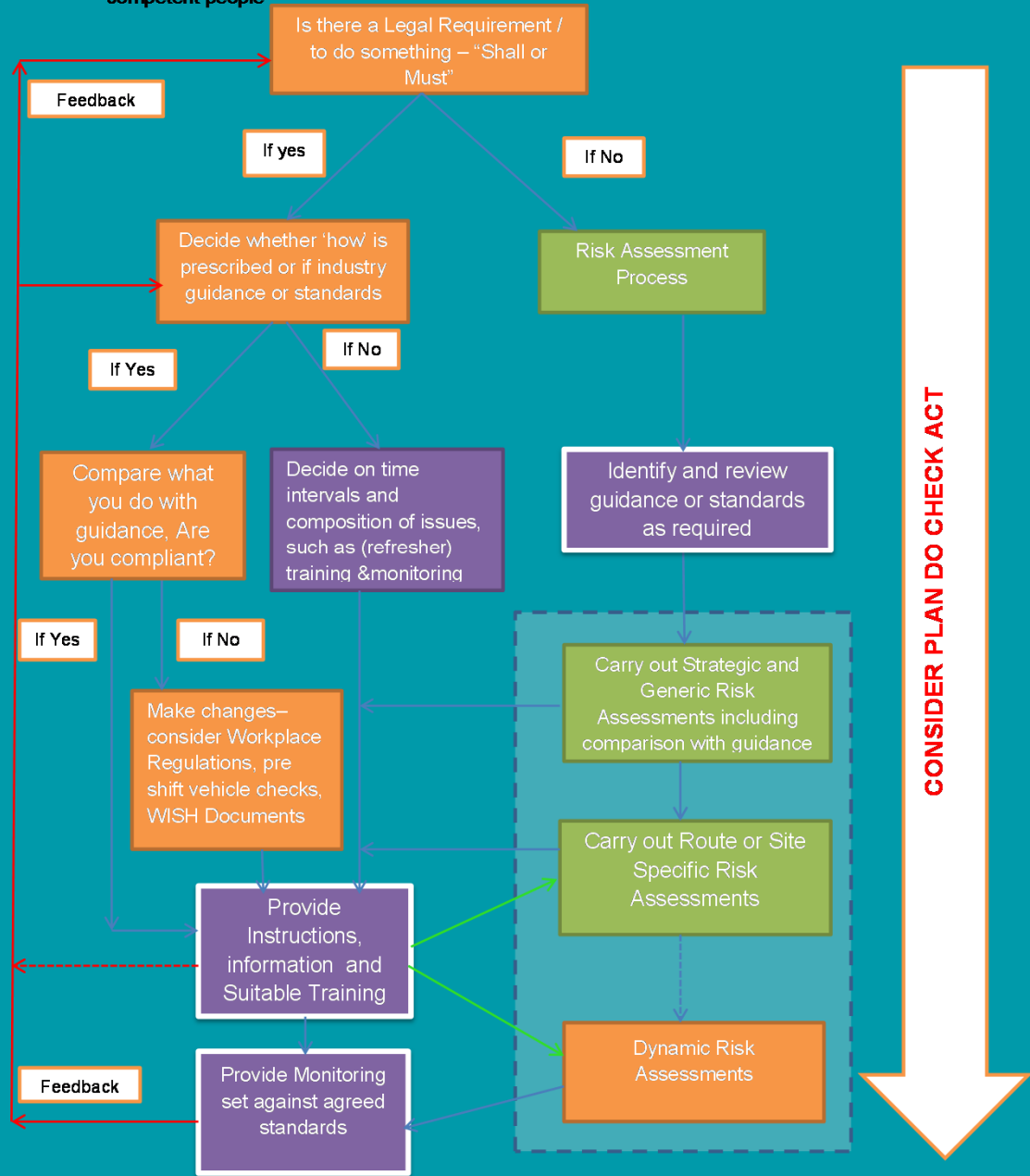
# Risk Assessment-Model Proposed

When considering risk controls, discuss the issues with the workforce and think about what is already being done, then compare it with the industry standard. This could be industry specific advice from HSE, from a Trade Association, or from a safety organisation for example.

<http://www.hse.gov.uk/managing/delivering/do/profiling/assessing-level-of-risk.htm>

## Health and Safety Risk Assessment Process

In this model different parts of activity may be at a different point, assumption is this is done by competent people



# Other Types of Risk Assessment

- 5 x 5 table?
- Route /Round Risk Assessments ...?
- COSHH Assessments
- Manual Handling Assessments?
- DSE Assessments?
- First Aid of Needs Assessments?  
Fire Risk Assessments?
- Training to pull all these together, delegates to appreciate different tools

# Considerations

- Can the industry afford expensive training?
- Have your training budgets been cut?
- What do you need?
- Can this be credited against NVQ's/
- Should it benchmark against QSF?
- IOSH Budgets

# Our Objective

<b>Manager/Supervisor level 4-5 days</b>	<b>IOSH Managing Safely</b>	<b>Waste Collection H&amp;S Management</b>
Operative Level 1-1 ½ days	IOSH Working Safely	DASH "A Waste of Time"
	<b>Current IOSH Framework</b>	<b>Waste Collection Industry</b>

We are looking to put a pan industry project to 'fill the vacancy'

# DASH Course Content

- Purpose made safety film
- Section 1 – H&S Law
- Section 2 – Safe Collection of Refuse and Recycling
- Section 3 – Safety Features of Collection Vehicles
- Section 4 – Safe working at Waste Management Sites and on rounds
- Section 5 – Reversing Assistant Training
- Section 6 – Manual Handling & Horseplay
- Section 7 – Accident/Incident/Near Miss Reporting, RIDDOR & Aggressive Situations

# What was done

- Utilised thinking associated with the product created by 'DASH– a Waste of Time'
- Created flexible content – a framework
- Based upon new HSG 65 'Plan –Do-Check-Act'
- Create Video and training package on Route Risk Assessment
- Needs support of LA/Contractors 'Competent Person R7 MH&SW Regulations'
- Quiz
- Obtained other videos
- Given away free to UK LA sector

# Final Waste collection health and safety management

- Day 1 – General Health and Safety
- Day 2 – Risk management and risk assessment
- Day 3- Accident investigation workshop – (incorporating Human Factors)
- Day 4 -Competence, Contractors, Monitoring and Supervision
- Assessment?
- Certificate



# Engagement

## Internal

- IOSH EWMG
- IOSH Commercial & Executive Director Richard Orton
- IOSH President and 3 Immediate Past President

## External

- Chartered Institution of Wastes Management
- LAWS
- MD of WAMITAB
- WISH Competency Steering Group
- Veolia Training

# Barriers

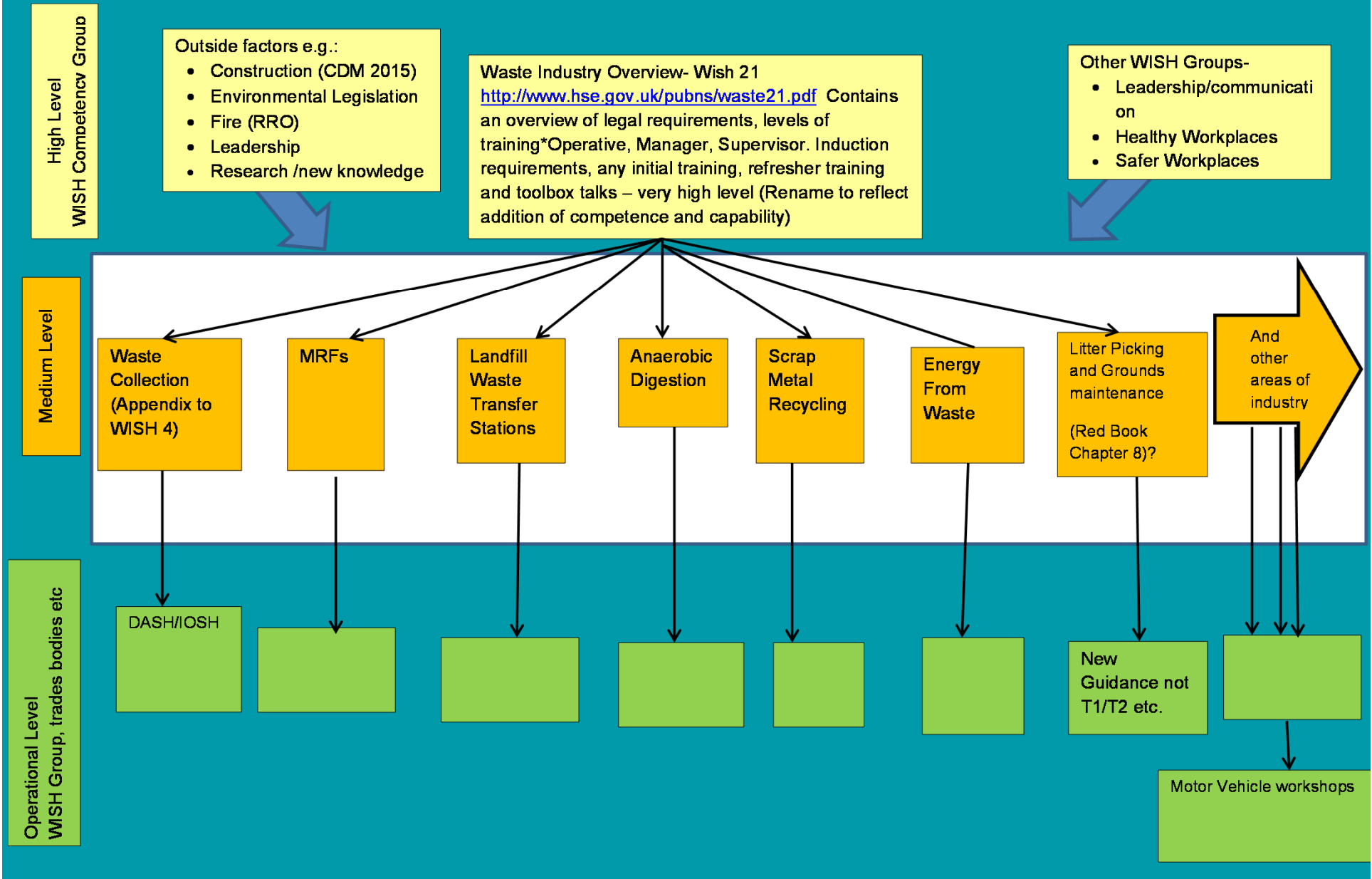
## The Process

- Cannot use Managing Safely name – distinctly different?
- Cannot use tailored course name (no facility for an IOSH Group to become an organisation)
- How can it be part of charitable process

## Lack of Support

- Copyrighted material held by other organisations and waste companies
- LA's reluctant to allow time to support the project
- Not all contacts were supportive (Why are you doing this?)

# Future Engagement Opportunities



# As an exemplar for new ideas?

- New ideas can be brought to IOSH
- How can ideas by groups be better supported?
- How can IOSH engage better in other sectors?
- Designed to include own materials – course can be made personal
  
- [wastecollectioncourse@ioshewmg.co.uk](mailto:wastecollectioncourse@ioshewmg.co.uk)

# Video Clips

- Safe collection services

Any Questions?

Thanks

# IOSH

- We are passionate about protecting people
- We value work and life
- We are a powerful voice for change
- We are committed to professionalism
- Our members matter
- We sustain a strong health and safety community