

A decorative horizontal bar at the top of the slide, consisting of a red rectangular block on the left and a blue rectangular block on the right. The text is white and centered within the blue block.

Redefining neighbourhoods A future beyond austerity?

Karen Barker and Peter Kenway
New Policy Institute

April 2017

Summary: neighbourhood services

- Universal services – a core function of local govt in public's eyes.
- The hardest-hit of all local govt services since 2010/11, spending down by 50% in hardest hit LAs (widely 25%+).
- The hardest hit LAs are most often the most deprived.
- Defend as part of wider defence of local govt which has borne brunt of austerity (total local spending per £100 of central spending, down from £67 to £50).

Summary: what's it based on?

- **Universal services** – a core function of local govt in public's eyes.
 - Public + APSE member surveys
- The **hardest-hit** of all local govt services since 2010/11, spending down by 50% in **hardest hit LAs** (widely 25%+).
 - LA-level spend on individual services
- The hardest hit LAs are most often the **most deprived**.
 - Matched to other official data.
- Defend as part of wider defence of local govt which has borne brunt of austerity (**total local spending per £100 of central spending**, down from £67 to £50).
 - Macroeconomic (national accounts) data

Neighbourhood Services: what and why

Neighbourhood Services

Includes:	Highways and Transport, Cultural, Environmental and Regulatory, Planning and Development
Excludes:	Education, Social Care, Public Health, Housing (GRFA), Police and Fire, Central and Other

- A collective term helps give visibility
- Previously: 'public realm' or 'liveability' – but do these work with public?
- Surveys of APSE members (99 responses) and the general public (1539) put 'neighbourhood services' at top of list

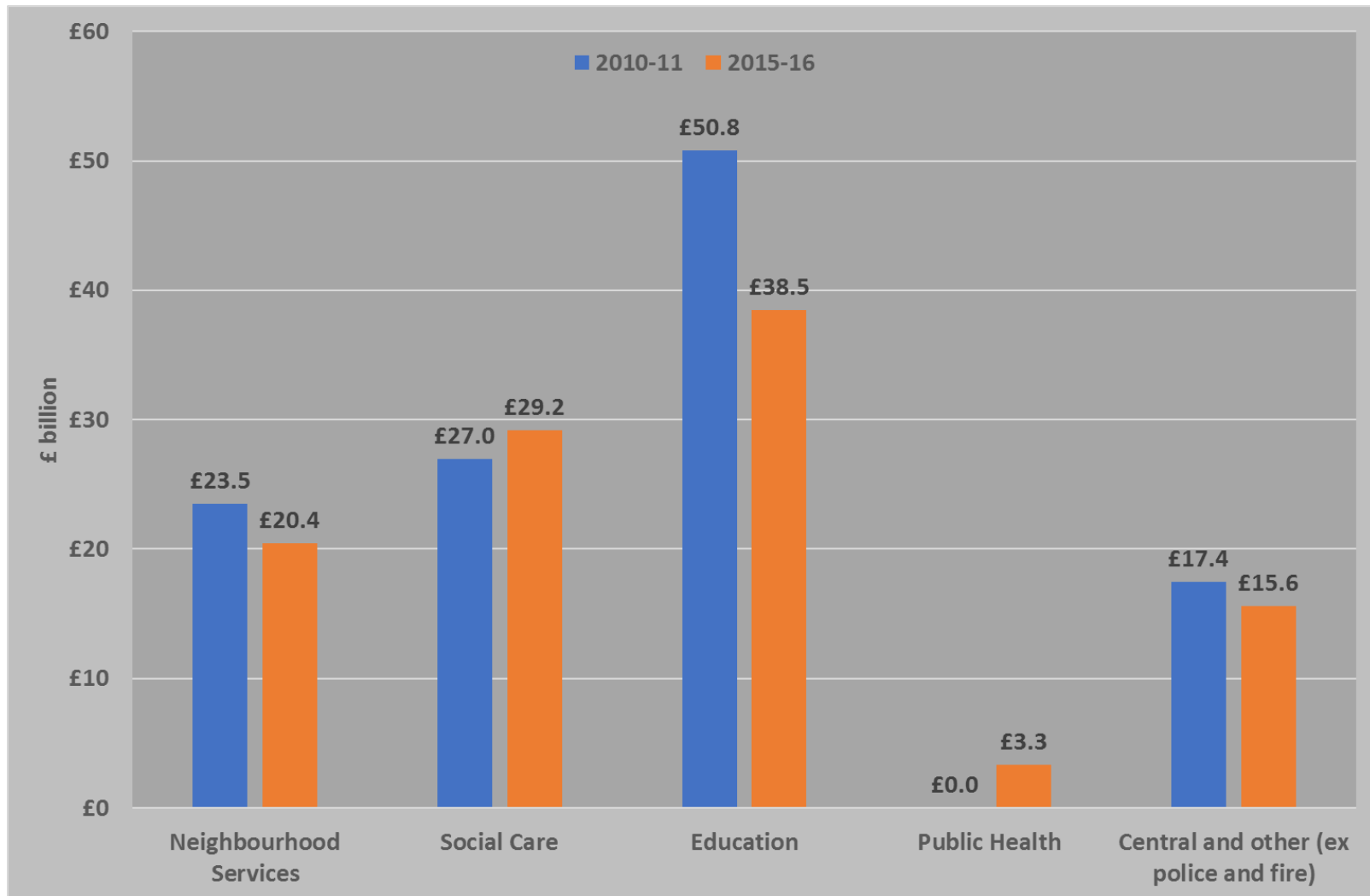
Spending on Neighbourhood Services (and inflation)

Total Service Expenditure (TSE)

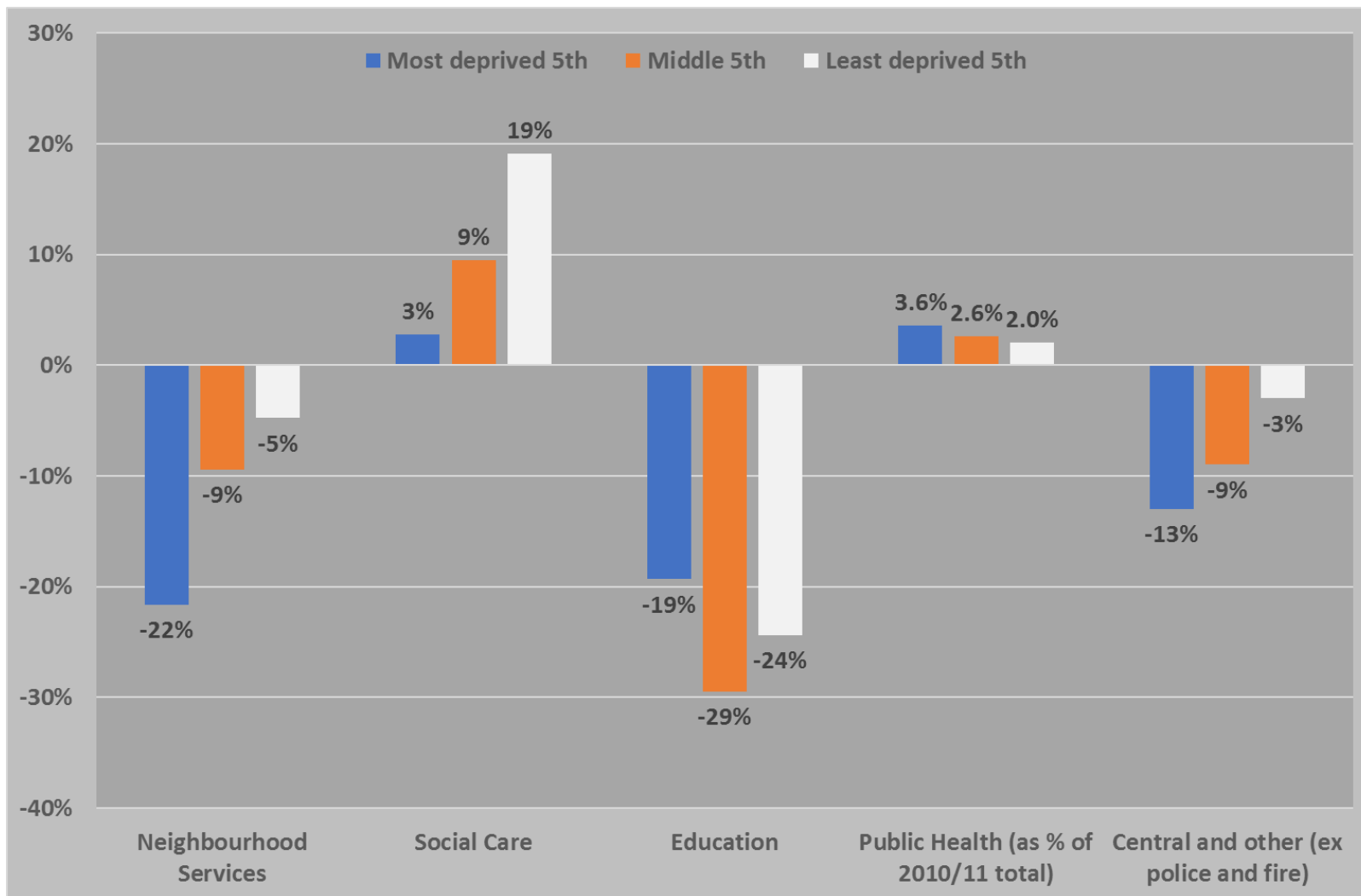
Made up of:	Spending on: i) employees + ii) running expenses (so n.b. before sales, fees and charges)
Source (Eng):	Revenue Outturn Service Expenditure Summary

- What about cost inflation in local govt?
- Only data on this – ‘general govt consumption deflator’ – rose 1.2% in five years (vs. 7.6% for whole economy unit costs and 11% for consumer prices)
- Implies at least double austerity for public sector workforce

Total Service Expenditure (TSE) by service group, 2010-11 and 2015-16 (England)



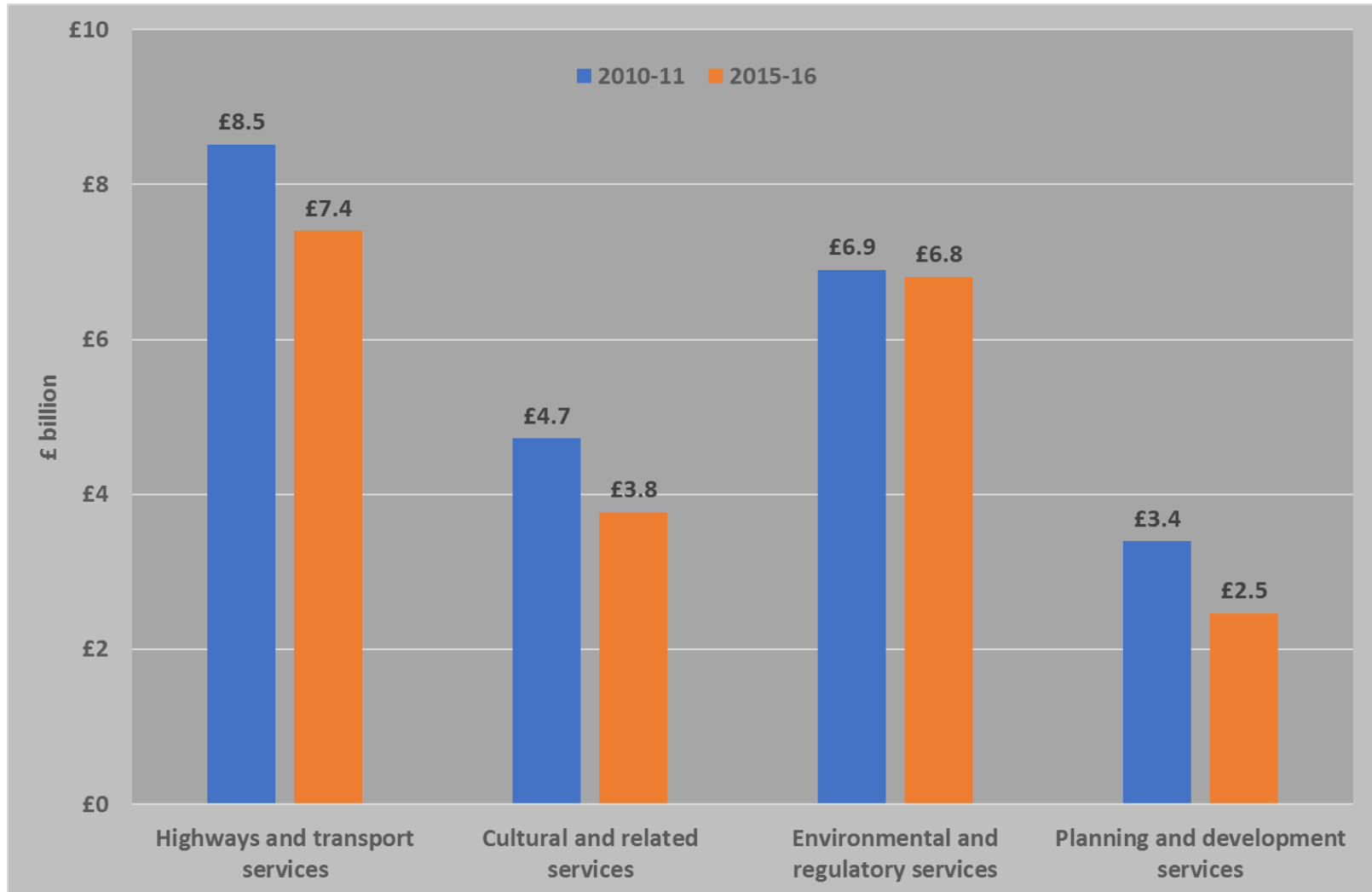
TSE: % change 2010-11 to 2015-16 by service group and deprivation level (England)



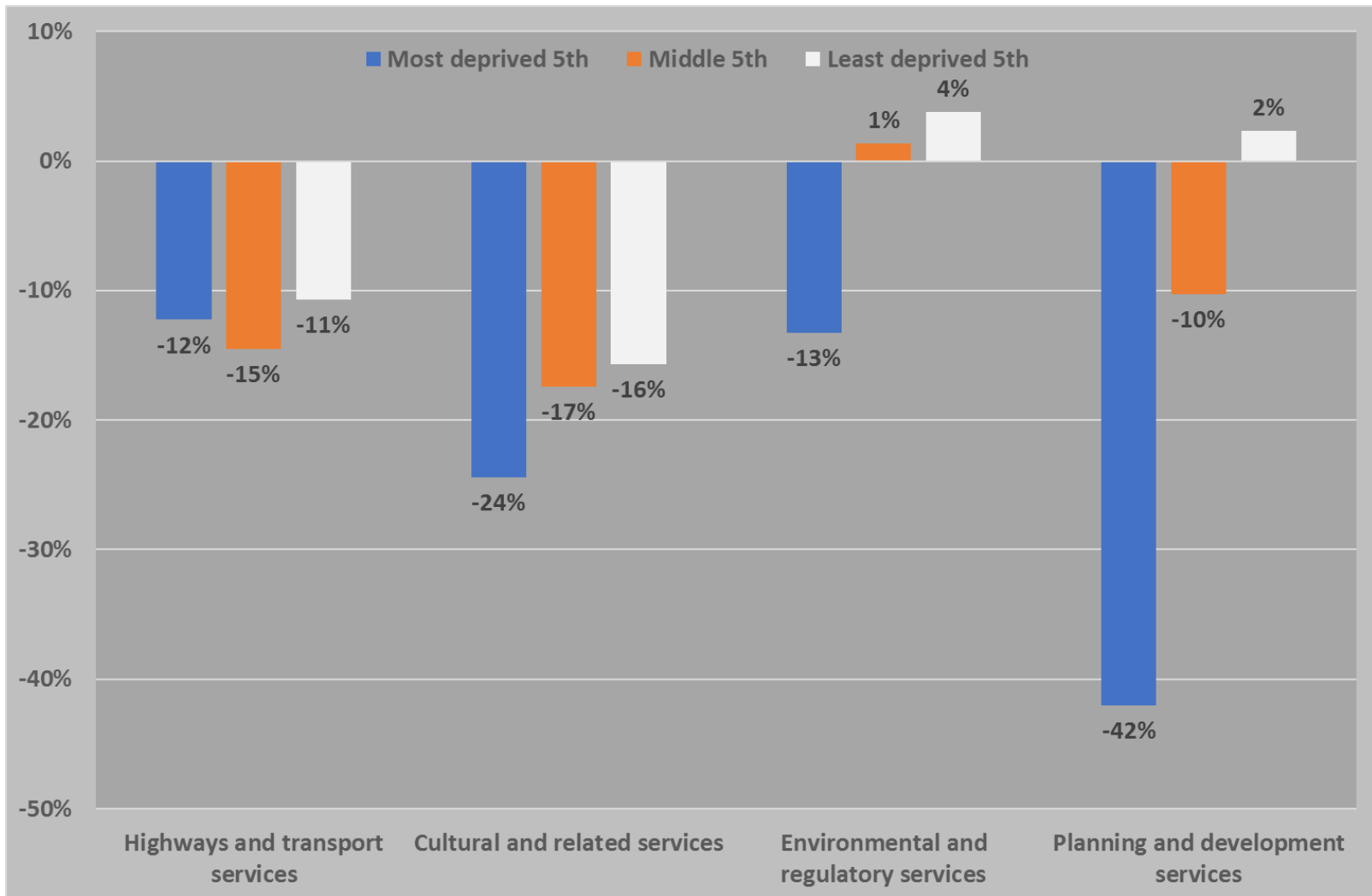
Neighbourhood Services spending in Wales and Scotland

- Scotland – spending down 7.3% (13% England)
- Wales – spending down 20% (even though total local govt spending up 3%)
- Wales highlights the vulnerability of neighbourhood services within local govt spending as a whole

TSE by Neighbourhood Service Subgroup, 2010-11 and 2015-16 (England)



TSE: % change 2010-11 to 2015-16 by sub-group and level of deprivation (England)



Individual neighbourhood services with TSE cuts above 10% (all English LAs) 2010/11-2015/16

% cut	
50%+	Animal and public health; Rail support
40-49%	Community devt; Tourism
30-39%	Congestion, bus lanes, traffic; Crime, safety and CCTV; Ec/business devt; Environmental initiatives
20-29%	Sports and rec facilities; Toilets; Trading standards; Libraries; Pests; Road maintenance; Museums, galleries; Community centres; Health and safety
10-19%	Building control; Arts and heritage; Conservation; Food and water safety; Road safety; Public transport co-ordination; Open spaces; Theatres; Street cleansing

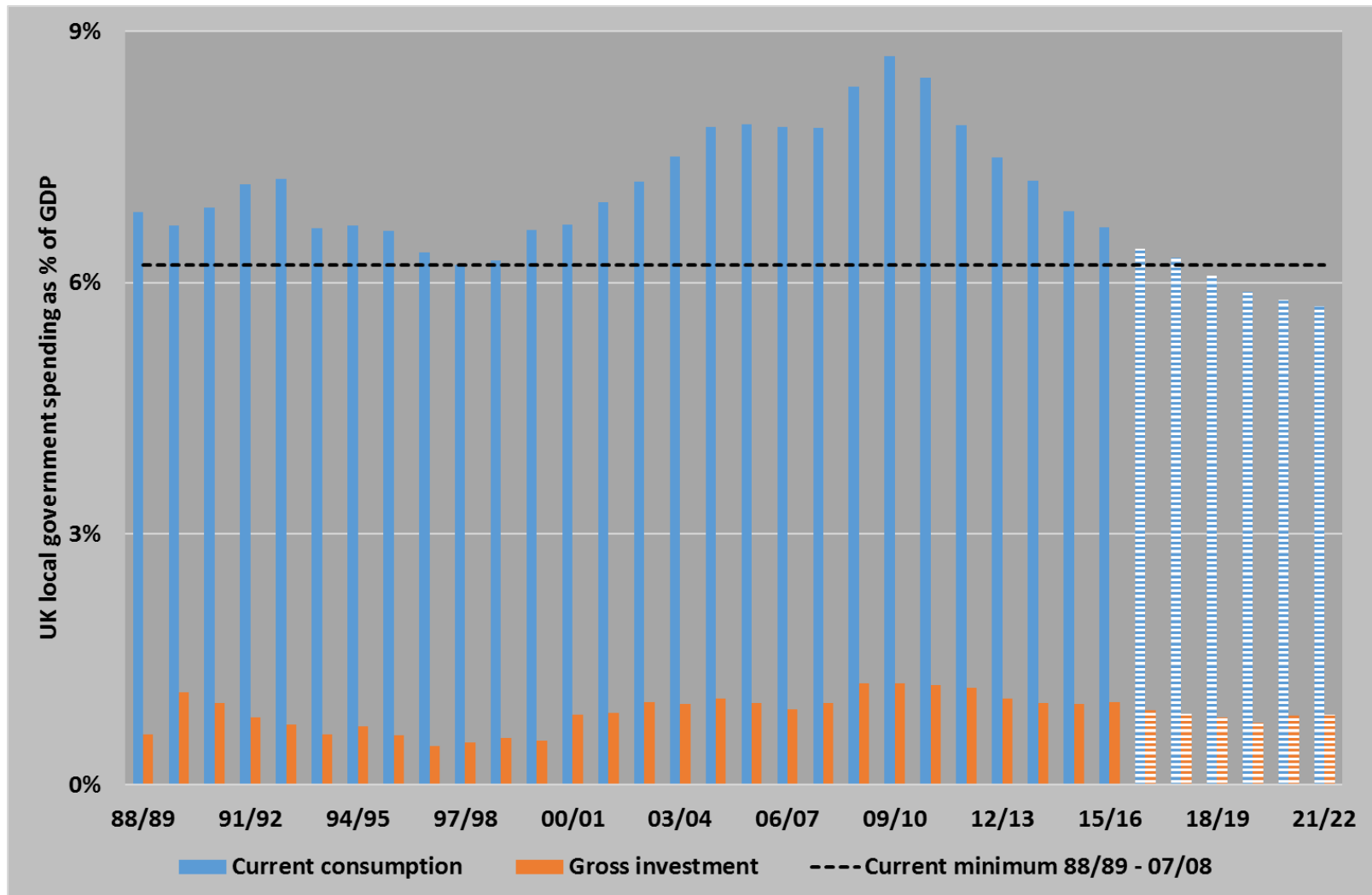
Individual neighbourhood services with TSE rises above 10% (all English LAs) 2010/11-2015/16

% rise	
10-19%	Waste disposal and recycling
20-29%	Housing standards
30-39%	Flood, drainage, coasts, climate
40-49%	Highway/transport planning

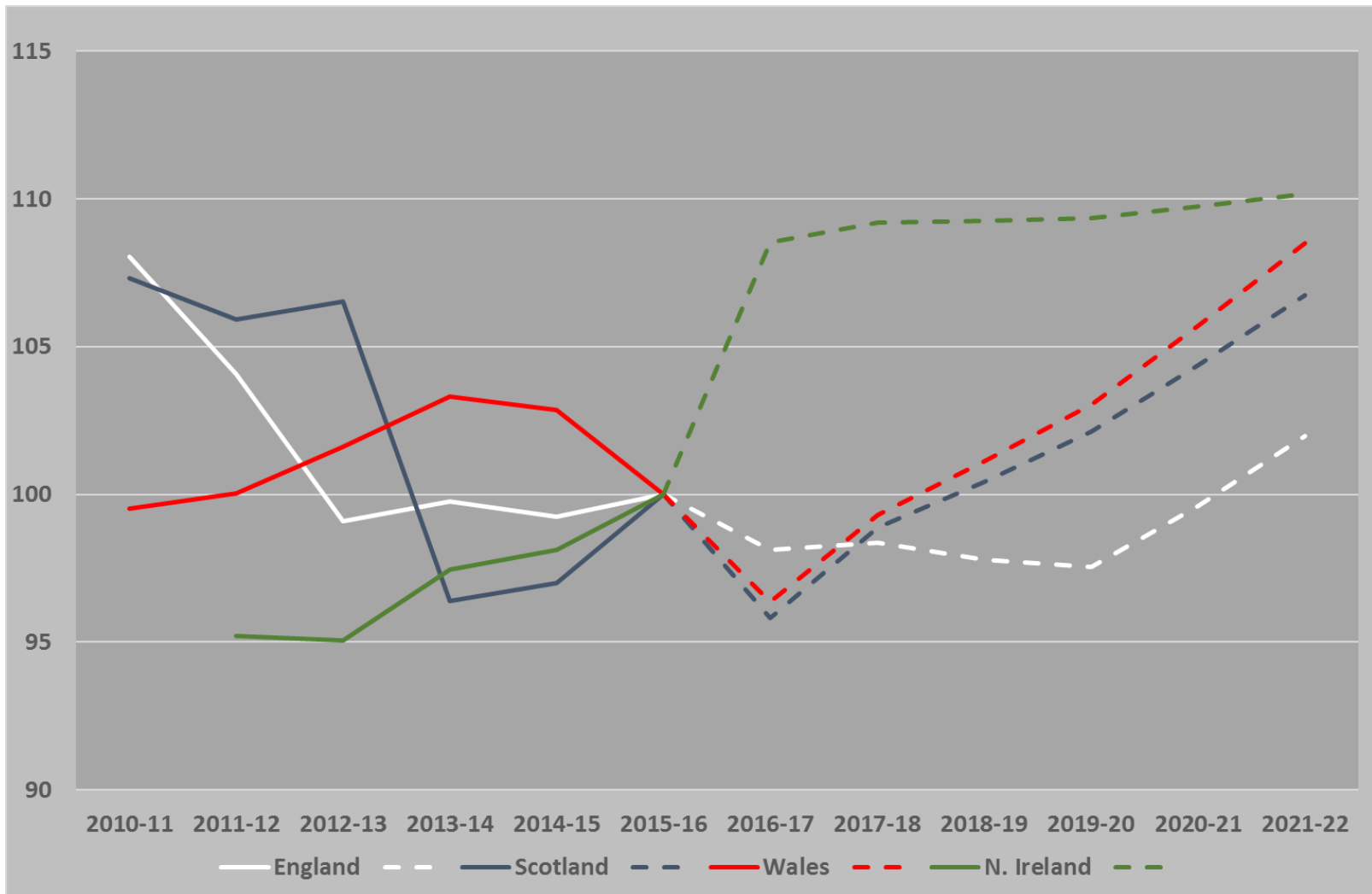
Individual neighbourhood services with TSE cuts above 10% (most deprived 5th of English LAs) 2010/11-2015/16

% cut	
60%+	Animal and public health; Bus support; Community devt
50-59%	Tourism; Crime, safety and CCTV
40-49%	Environmental initiatives; Congestion, bus lanes, traffic Ec/business devt
30-39%	Conservation; Community centres; Toilets; Trading standards; Road safety; Museums, galleries; Building control; Pests
20-29%	Sport and rec facilities; Food and water safety; Libraries; Theatres; Road maintenance
10-19%	Parking; Arts and heritage; Noise and nuisance; Licensing; Street cleansing; Open spaces; Health and safety

UK Local Government current consumption and gross investment as % of GDP



Local Government net service expenditure by country (2015-16 = 100)



Concluding remarks

- The value of neighbourhood services is clear to the public even as their political priority is low and falling
- Research like this is an exercise in chiselling out evidence to shape and support stories about neighbourhood services
- The reliable insights from detailed data lies in the broader patterns they reveal
- A squeeze on local govt (compared with central govt) hitting the most deprived areas hardest ... is anyone arguing for this?