



Urban green: The next ten years for the Heritage Fund

Drew Bennelick, UK Head of Land and Nature
National Lottery Heritage Fund

Twitter: @drewbennelick

A talk of two halves

- What is the Heritage Fund?
- Our role in urban green space

- Our latest thinking on parks and urban green space
- Learning from our Future Parks Accelerator
- Our thinking for the future



The National Lottery Heritage Fund

We are the largest grant funder of the UK's heritage.

Since 1994 we have awarded over £8.6bn to over 44,000 projects across the UK.

We have awarded £1.7bn to landscapes and nature.

Our vision is to inspire, lead and resource the UK's heritage to create positive and lasting change for people and communities, now and in the future.



Funding landscapes and nature is a key strategic funding priorities until 2024

We prioritise projects that:

- support nature's recovery
- deliver nature-based solutions to address climate change
- reconnect people to landscapes and nature



Urban green space heritage means:

Parks, historic cemeteries, squares, promenades and linear routes

Conserving historic designed layouts, structures and re-creating lost features

Enhancing habitats and species abundance

Understanding cultural and social history of a site, from famous designers to infamous events

Providing training and paid apprenticeships in necessary skills

Helping people to survey, record and learn about places

Linking green spaces to be part of a wider ecosystem



National Lottery Grants for Heritage

| Small | Medium | Large |
|--------------------------|------------------------------------|---|
| £3k-£10k | £10,000 - £250,000 | £250k-£5m |
| Single-Round Application | Single-Round Application | Two Round Application (Development and Delivery) |
| Regional team decision | Regional team decision | Committee decision |
| No deadlines | No deadlines | Quarterly deadlines |
| 8 week decision | 8 week decision | 12 week decision |
| Max 1 Year | Max 5 Years | Max 7 Years (2 years development and 5 years delivery) |
| | { Project enquiry advice service } | { Expression of Interest } |

Our project outcomes

Inclusion outcome (mandatory)

A wider range of people will be involved in heritage

Priority outcomes

People will have developed **skills**

People will have greater **wellbeing**

The funded organisation will be **more resilient**

The **local economy** will be boosted

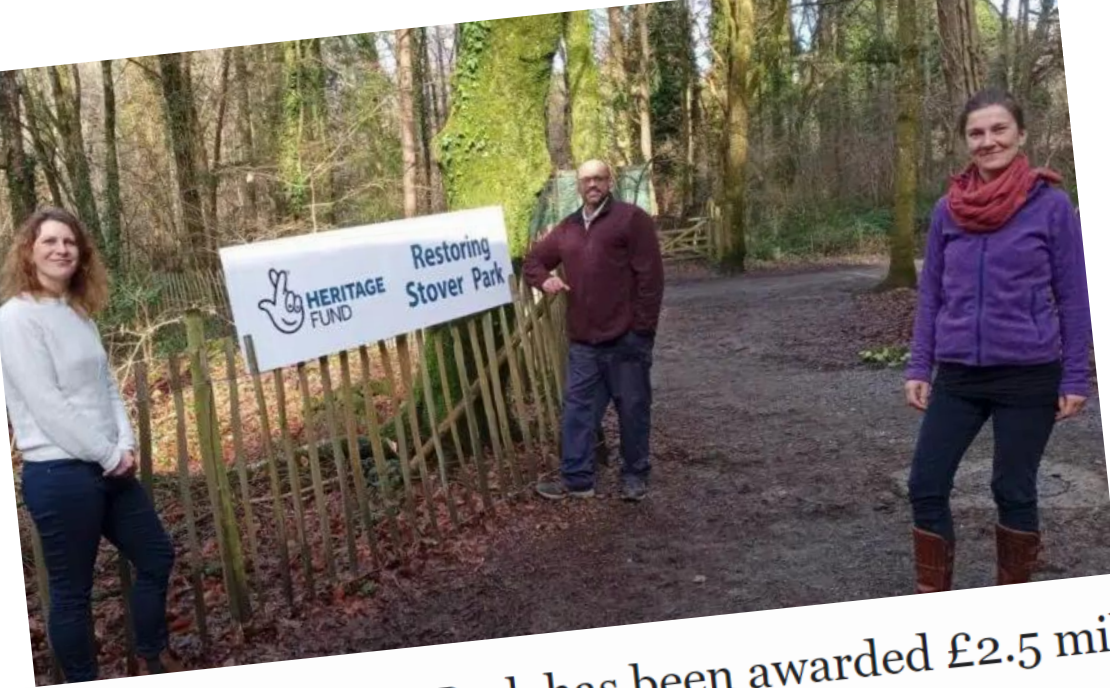
The **local area** will be a better place to live, work or visit

Other outcomes

Heritage will be in better condition

Heritage will be identified and better explained

People will have learned about heritage, leading to change in ideas and actions



**£9.4m to parks
and urban green
spaces
announced in
September 2022**

STOVER Country Park has been awarded £2.5 million from The National Lottery Heritage Fund to take action for nature.

NEWS

Leven River Park Awarded £0.25m NLHF Funding

📅 SEPTEMBER 29, 2022

**£3.78m of National Lottery funding awarded to enrich
Wigan's Haigh Woodland Park**



CF

100

100

Kiss goes

LOVE

Future Parks Accelerator

Community Green Space for the 21st Century



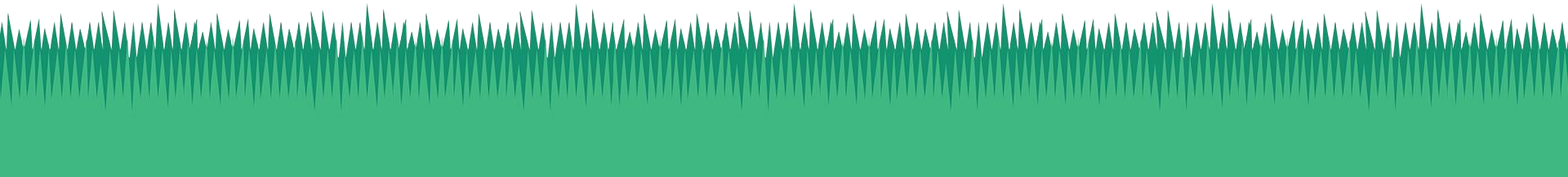
Ministry of Housing,
Communities &
Local Government

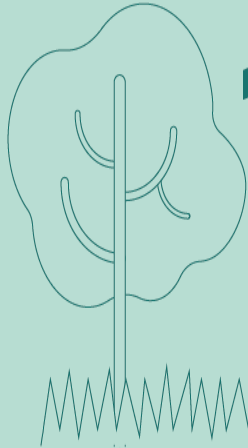


National
Trust

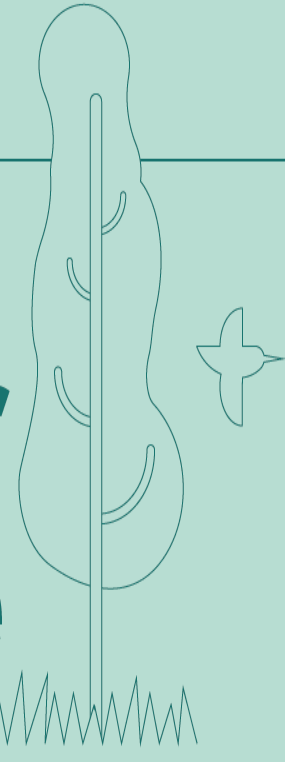
Introducing Future Parks Accelerator

- Launched in March 2019
- Joint initiative between **National Trust** and **National Lottery Heritage Fund** with support from **DLUHC**.
- **Strategic response** to the **funding crisis** facing public parks in the UK, seeking to safeguard high quality, free urban green space for future generations.
- Working with **nine UK towns and cities**, in partnership providing **support and challenge** to drive high ambition.
- **Investing in people** to provide 'head space' and capacity to **enable strategic thinking** and bring about transformation at a **whole-place level**.





1. Know your green estate



What is its current condition and future potential for people, place, climate and nature?

Action: Investigate and analyse the extent, condition, connectivity, use, income and expenditure. This baseline information is an essential foundation.



2. Be ambitious for environmental justice



What are the most needed systemic improvements to green space and green infrastructure to improve quality of life for everyone?

Action: Use environmental and socio-economic data to map and index local urban environmental quality, to identify investment priorities for green infrastructure 'growth' and the benefit of taking an integrated systems approach.

Birmingham Environmental Justice

Deprivation in Birmingham by Sub Domain



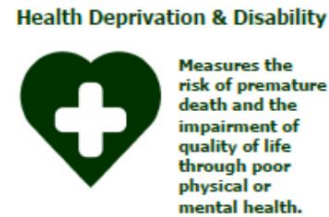
Birmingham Rank 7th
2nd Highest Core City



Birmingham Rank 20th
2nd Highest Core City



Birmingham Rank 41st
3rd Highest Core City



Birmingham Rank 37th
5th Highest Core City



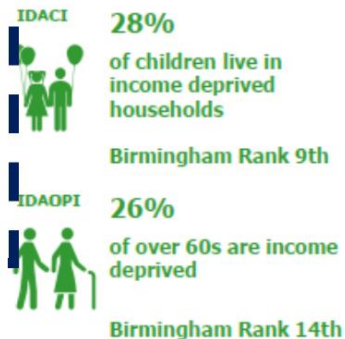
Birmingham Rank 66th
2nd Lowest Core City



Birmingham Rank 19th
1st Highest Core City



Birmingham Rank 9th
2nd Highest Core City



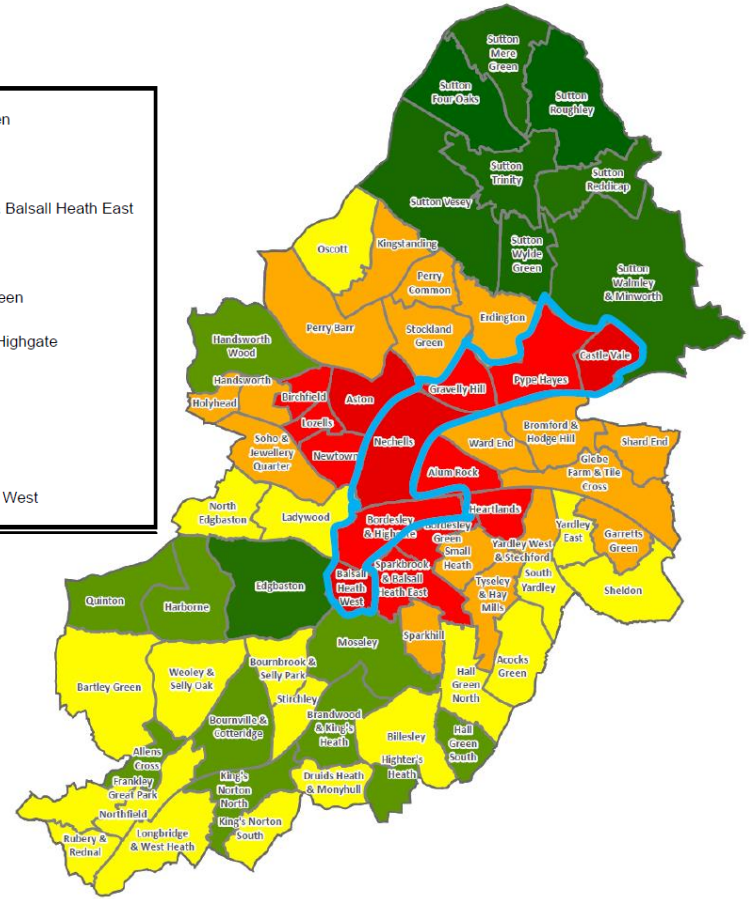
- Living Environment:**
- Quality of housing;
 - Air quality;
 - Road traffic accidents

- Environmental Justice:**
- Access to Green Space
 - Urban Heat Island
 - Flood risk
 - Excess Years Life Lost

ENVIRONMENTAL JUSTICE MAP OF BIRMINGHAM

Combined Index by Ward - Mean Value

| | | | |
|----------------------------------|---------------------------------|---------------------------------|--|
| 0.12 - Sutton Roughley | 0.28 - Brandwood & King's Heath | 0.32 - Frankley Great Park | 0.37 - Garretts Green |
| 0.12 - Sutton Four Oaks | 0.28 - King's Norton North | 0.32 - Acocks Green | 0.38 - Shard End |
| 0.15 - Sutton Vesey | 0.29 - Northfield | 0.32 - North Edgbaston | 0.38 - Handsworth |
| 0.16 - Sutton Wyde Green | 0.30 - Rubery & Rednal | 0.33 - Ladywood | 0.38 - Ward End |
| 0.16 - Sutton Mere Green | 0.30 - Bournbrook & Selly Park | 0.34 - Erdington | 0.39 - Sparkbrook & Balsall Heath East |
| 0.18 - Sutton Trinity | 0.30 - Hall Green North | 0.34 - Holyhead | 0.39 - Alum Rock |
| 0.21 - Edgbaston | 0.30 - King's Norton South | 0.34 - Yardley West & Stechford | 0.39 - Birchfield |
| 0.22 - Sutton Walmley & Minworth | 0.30 - Yardley East | 0.34 - Small Heath | 0.39 - Heartlands |
| 0.22 - Sutton Reddica | 0.30 - Weoley & Selly Oak | 0.35 - Tyseley & Hay Mills | 0.39 - Bordesley Green |
| 0.24 - Hall Green South | 0.30 Longbridge & West Heath | 0.35- Sparkhill | 0.39 - Pype Hayes |
| 0.26 - Harborne | 0.30 - Oscott | 0.36 - Perry Barr | 0.40 - Bordesley & Highgate |
| 0.26 - Bournville & Cotteridge | 0.31 - Bartley Green | 0.36 - Soho & Jewellery Quarter | 0.40 - Lozells |
| 0.26 - Moseley | 0.31 - Sheldon | 0.36 - Perry Common | 0.41 - Gravelly Hill |
| 0.26 - Handsworth Wood | 0.31 - Billesley | 0.36 - Bromford & Hodge Hill | 0.41 - Newtown |
| 0.27 - Quinton | 0.31 - Stirchley | 0.37 - Stockland Green | 0.42 - Aston |
| 0.28 - Highter's Heath | 0.32 - South Yardley | 0.37 - Kingstanding | 0.42 - Nechells |
| 0.28 - Allens Cross | 0.32 - Druids Heath & Monyhull | 0.37 - Glebe Farm & Tile Cross | 0.43 - Castle Vale |
| | | | 0.43 - Balsall Heath West |



- Levelling Up
- Climate Change
- Nature Recovery

© Crown Copyright and database right 2022.
 Ordnance Survey Open Greenspace layer derived information.
 Ordnance Survey 100021326.
 2014 daily mean urban heat island intensity (oC) at 1 km resolution
 derived from the relationship between the BUCL urban
 observation network and GHS-built data, R Sasek et al 2020
 Environ. Res. Lett. 15 114014 <https://doi.org/10.1088/1749-9025/abb551>.
 You are not permitted to copy, sub-licence, distribute or sell any of this data
 to third parties in any form.
 Produced by the Birmingham City Council Geospatial Team.



3. Ensure green space is central to local community life



What do your communities need and how do they want to be involved?

Action: Ask communities and VCSE sector what they need from green spaces and what they can contribute to activate and animate them to increase benefit and partner communities in new ways.

4. Put health at the heart of green space strategy and plans



How can the primary purpose and benefit of urban green space be maximised in the 21st century?

Action: Partner Health, Social Care and VCSE sectors to upgrade your green estate as health infrastructure and co-create health service delivery in green spaces, including green social prescribing.



Put Health At The Heart Of Parks

Learn how to use parks to deliver greater health benefits for your communities, from assessing green spaces to making the case for investment.



Analysing The Health Data & Inequalities



Navigating The Health System



Making The Case For Investment

[Read The 10 Point Plan](#)

* 5. Grow your urban nature network *

How can you improve the benefit nature brings to people's wellbeing and climate resilience?

Action: Audit the ecosystem services provided by urban natural infrastructure in your place. Engage stakeholders and the public in identifying solutions and improvements to grow the network and enhance quality, connectivity and accessibility.

LANDSCAPE CORRIDORS

These consist of a mosaic of habitats that are able to provide a safe passage between two core areas.

STEPPING STONE CORRIDORS

These consist of a series of small habitat patches that are not physically linked, but are close enough to provide sufficient shelter/food/rest to enable passage between two core areas.

CORE AREAS

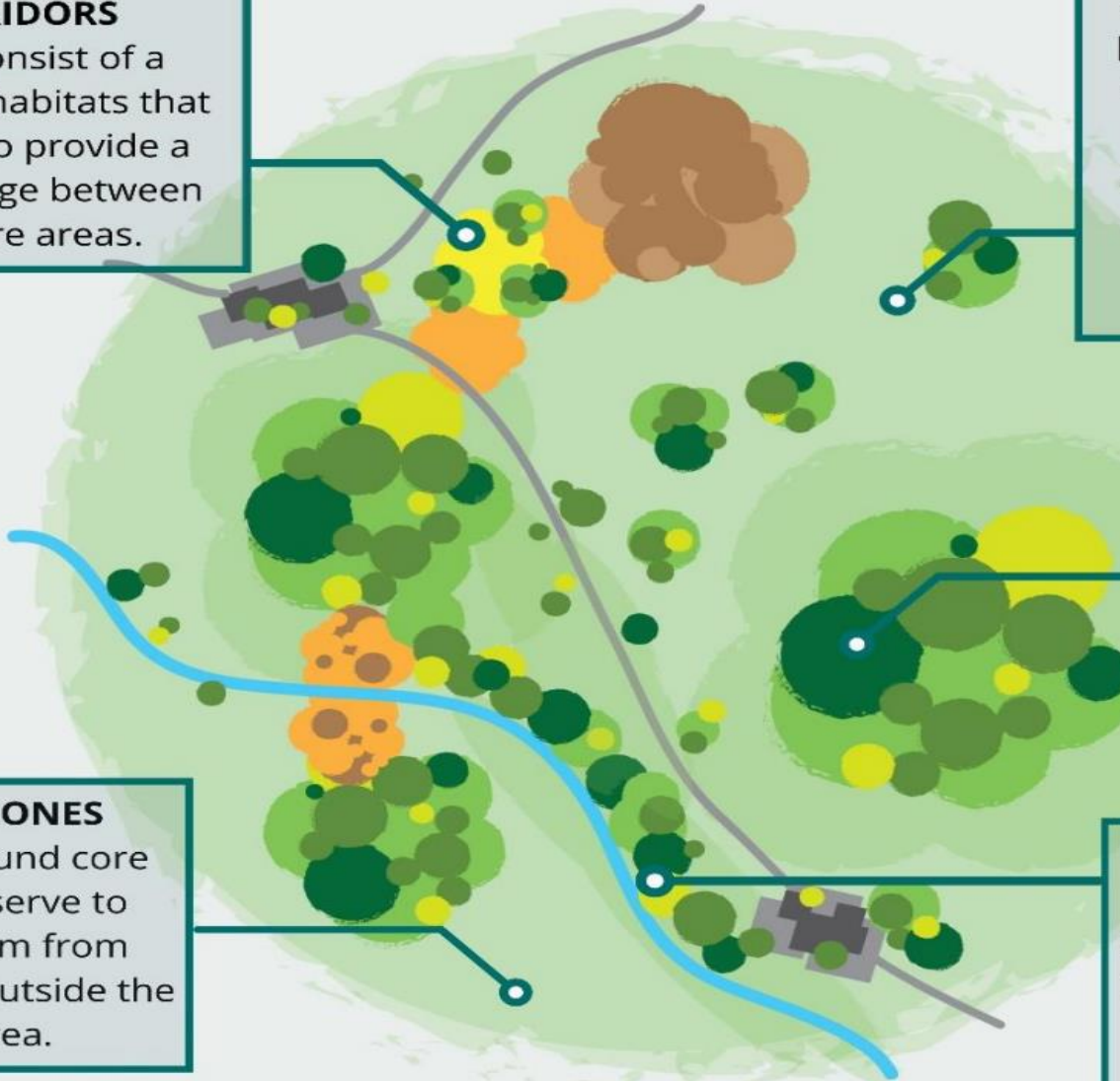
These could include wildlife reserves, local conservation areas and marine protected areas.

BUFFER ZONES

These surround core areas and serve to protect them from disturbance outside the core area.

LINEAR CORRIDORS

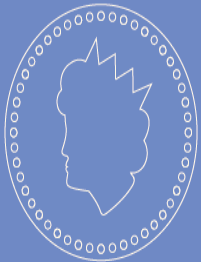
These are uninterrupted strips of habitat, for example a hedgerow, roadside verge or river.



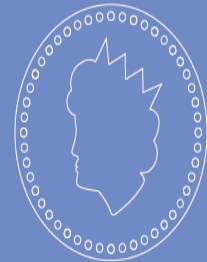
6. Make parks and green spaces a popular cause

How can you attract and retain significant philanthropic funding and grant income?

Action: Create the capacity to act with charitable purpose, directly or in partnership with VCSE sector.



7. Be socially entrepreneurial



How can you optimise income generation and boost jobs through activity that benefits communities?

Action: With your communities, local businesses and social enterprises, explore and prioritise income generation and job creation opportunities from improved experiences of green spaces.

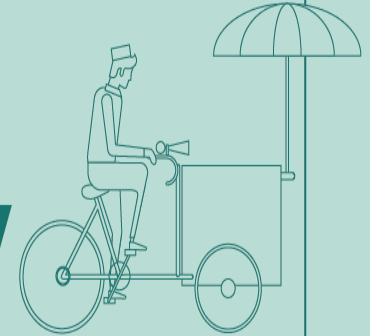
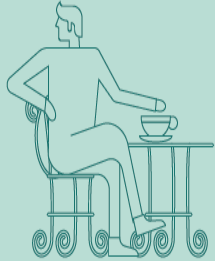


8. Promote green space as valuable natural infrastructure



How can you make the case to invest in your green/blue network?

Action: *Calculate the real economic value of your green estate (not just the maintenance cost, or income generated) to demonstrate the high benefit:cost ratio.*



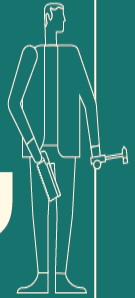
9. Develop new sources of investment

How can you attract new sources of long-term, dedicated investment for your green spaces?

Action: Explore your green finance potential; start by setting-up a habitat bank.



10. Nurture your green team and wider 'family'



How can you ensure the capacity, capability and shared purpose to meet 21st century challenges and opportunities?

Action: *Invest in your teams to build skills, confidence and capacity of staff and volunteers and tap into the leadership and potential across your council and wider city network.*

Future Parks

Accelerator

1. Know your green estate
2. Be ambitious for environmental justice
3. Ensure green space is central to local community life
4. Put health at the heart of green space strategy and plans
5. Grow your urban nature network
6. Make parks and green spaces a popular cause
7. Be socially entrepreneurial
8. Promote green space as valuable natural infrastructure
9. Develop new sources of investment
10. Nurture your green team and wider 'family'



A Sustainable Future For Urban Green Space

Explore what we've learned over the past three years of working with local authority partners to redefine the role of urban green space. Read conversations with our partners, download step-by-step guides and share our impact data.

[Explore The Resource Hub](#)



www.futureparks.org.uk

@TheRealFPA



Sparked an idea?

Drew.bennellick@heritagefund.org.uk

Twitter: @drewbennellick