



**PARKS IN THE
SKY**

**REIMAGINING
MANCHESTER'S
CASTLEFIELD VIADUCT**



National Trust

- Independent charity formed over 125 years ago
- Charitable purpose to deliver benefit to the nation through history, nature and beauty
- National Trust Urban Places Strategy: **“Address unequal access to nature, beauty and history where people live”**

A photograph of the Dunston Staiths, a large timber structure, silhouetted against a twilight sky. The structure is reflected in the water below. The sky transitions from a deep blue to a soft purple and pink near the horizon. The water in the foreground is dark with some white foam from a small waterfall or weir. The overall mood is serene and industrial.

Dunston Staiths

- Dunston (coal) Staiths opened in Gateshead in 1893 and is believed to be the largest timber structure in Europe
- Closed for the past 25 years, Tyne & Wear Building Preservation Trust (TWBPT) have now restored the west end enabling public access
- Riverside Sculpture Park is on the River Tyne in Gateshead, adjacent to the Staiths and is home to 13 artworks, some by artists of international standing.
- National Trust is working with TWBPT and Gateshead Borough Council to **activate the Staiths** and run operations with linkages into Riverside Park



Birmingham Botanical Gardens

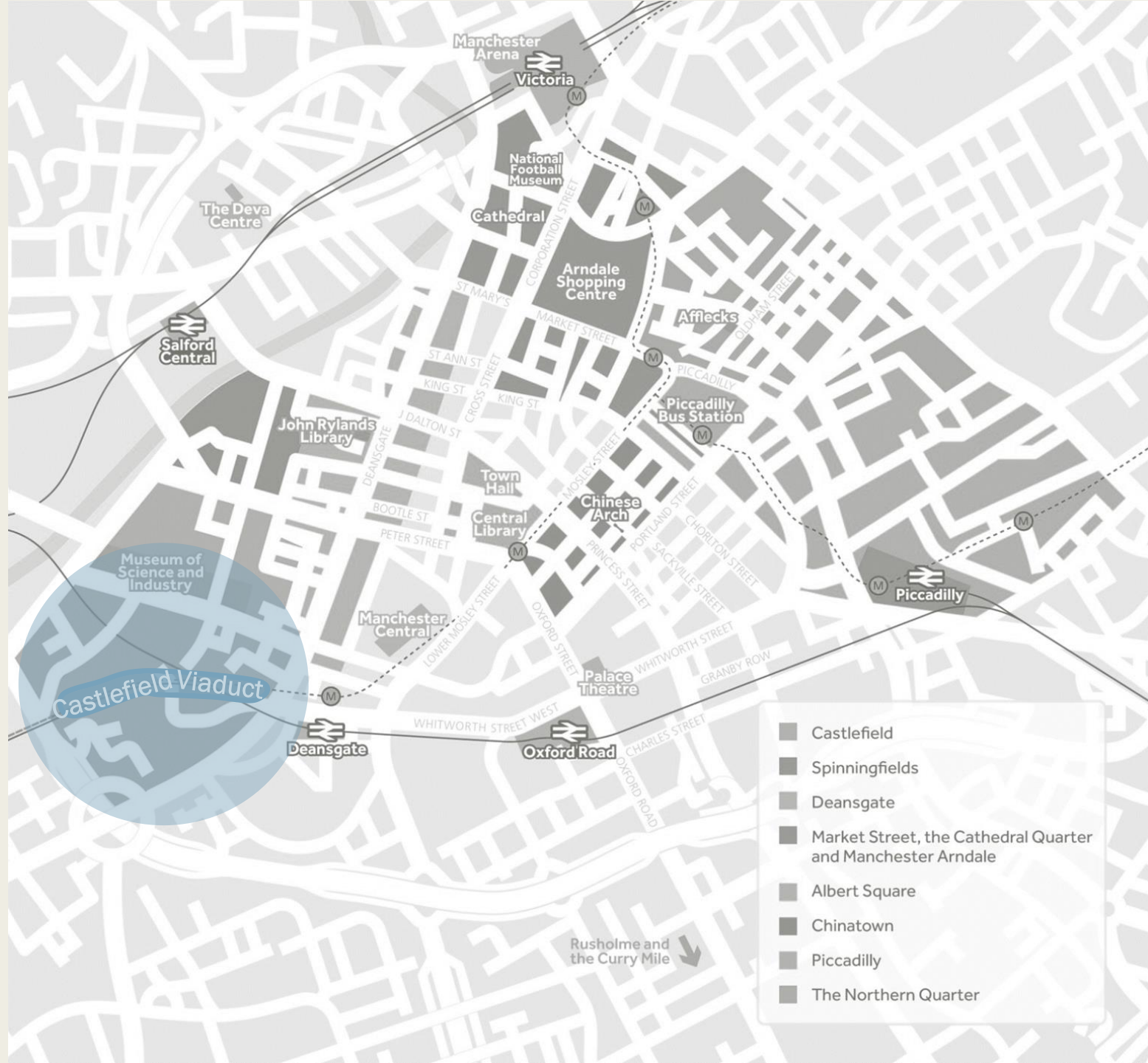
- Birmingham Botanical Gardens (BBG) are a Grade II* registered oasis in the heart of the city
- National Trust are working with Birmingham Botanical and Horticultural Society Limited to implement a sustainable heritage and green space model and improve BBG's visitor experience
- This includes understanding significance of the site, BBG's current audience and market, and its spatial context to develop a robust proposition

Future Parks Accelerator

- Future Parks Accelerator (FPA) is a 3 year, £15m collaborative programme between National Lottery Heritage Fund, National Trust and Local Authorities, with financial support from Ministry for Housing, Communities and Local Government.
- The programme is working with 9 places to test ways to bring about a step-change in how people engage with and use their green spaces and a transformation that protects and enhances all green space, and delivers a fair, quality, free service to all.
- **Places:** Edinburgh, Newcastle, Nottingham, Cambridgeshire, Bournemouth, Christchurch & Poole, Birmingham, Bristol, Plymouth, Camden & Islington.
- **Website:** [Future Parks Accelerator](#)



Location





Science &
Industry
Museum

Castle-
field Bowl

Potato
Wharf

Roman
Fort

Heritage
Park

MCC

Castlefield
Viaduct

Deansgate
Tram Stop

Bridge-
water
Canal
Towpath

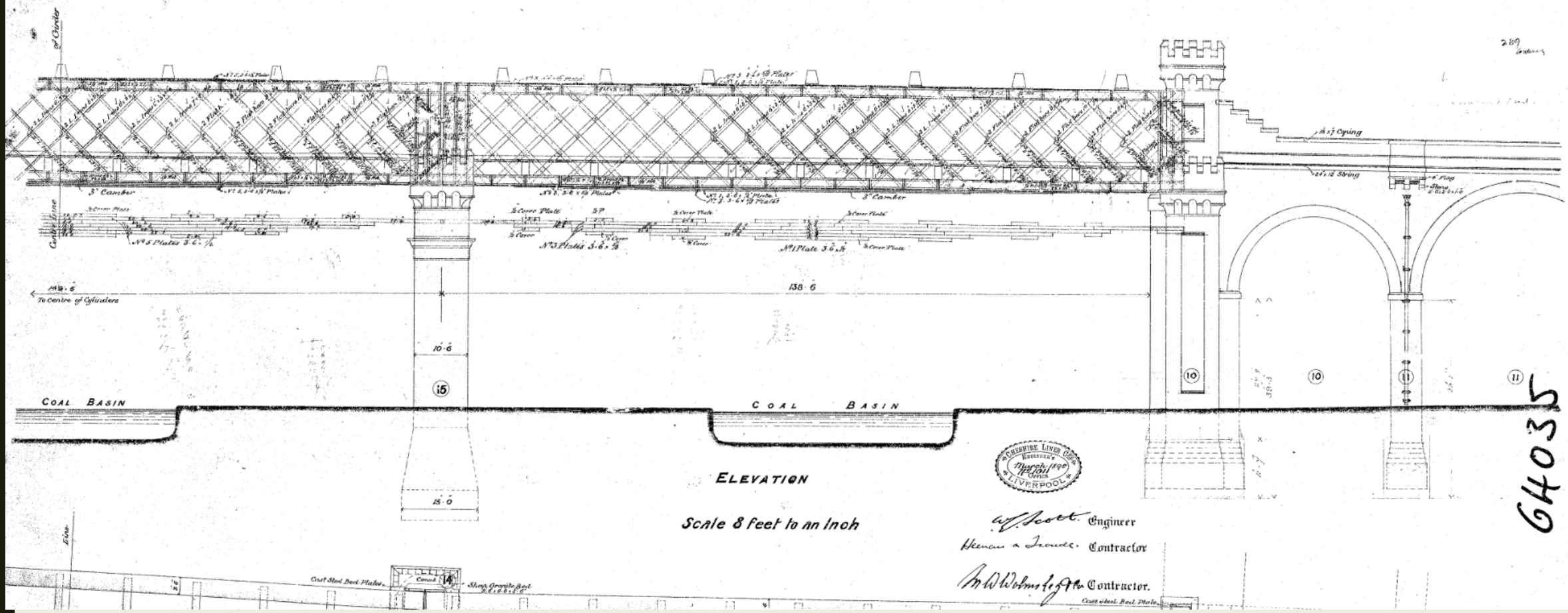
Deansgate
Rail Station

HOME



Three tracks once ran across the viaduct, carrying heavy rail traffic in and out of Central Station (now Manchester Central convention complex) in a bid to ease congestion on the adjacent Cornbrook Viaduct (c.1876). The viaduct cost £250,000 to build (around £20 million today).

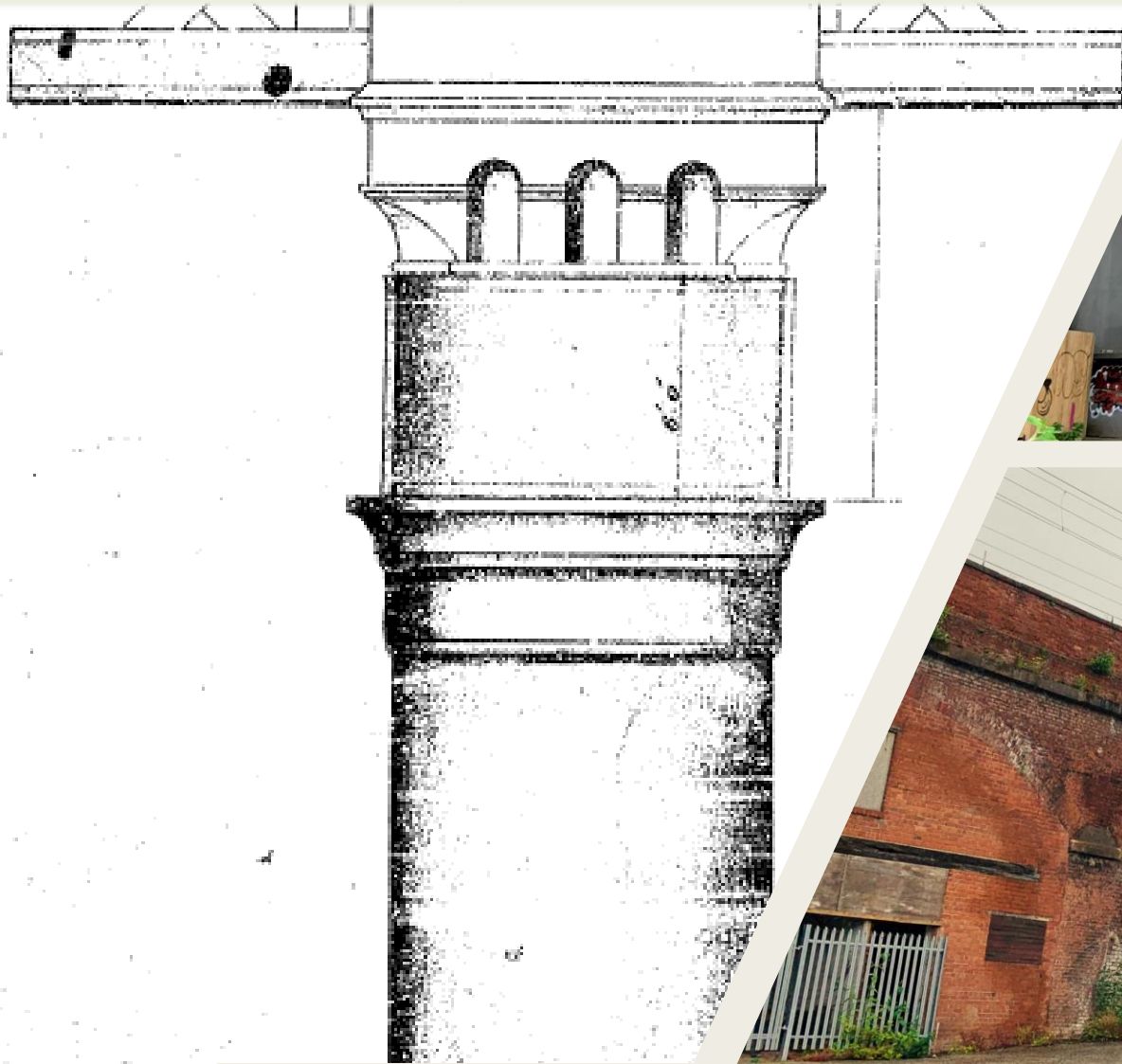
CHESHIRE LINES CEE MANCHESTER. WIDENING OF VIADUCT, CENTRAL STATION TO CORNBROOK. VIADUCT OVER CANAL AND COAL WHARVES.



64035

Predominantly wrought iron/steel, the remaining lattice structure is 330m in length, comprising eight spans. Behind decorative castellations, bearing plates support the heavy end posts of 16 trusses, the longest of which reaches 53m. It is listed as Grade II.

Following the closure of Central Station in 1969, the viaduct fell into disuse and the tracks were later dismantled. The viaduct has been left derelict ever since, with vegetation occasionally cleared by contractors to prevent structural damage.



An inspirational canvas...





Working in partnership, reimagine Castlefield Viaduct as an iconic urban re-use destination providing nature, culture and greenspace amenity for the local community and attracting visitors from further afield, all whilst respecting the heritage fabric of the listed structure and complementing existing plans and initiatives in the city.



We're on a journey...

103

Phase Two

- Informed by Phase One
- More permanent solution
- Bigger, bolder, more ambitious

Phase One

- Twelve Month Temporary Park
- July 2022 to Summer 2023
- Engage, Learn, Inspire, Entertain, Energise

Phase One: Overview

- Construct a safe, temporary destination on **50% of the viaduct deck**, including **partner plots** for others to activate;
- Invite up to **40,000 people** to the site through **pre-booked (free to book)** tours across 12 months with
- Allocations reserved for **underrepresented communities and groups** to ensure diversity of views are captured;
- Provide an **inspiring, informative and joyful experience** for visitors through high quality programming, horticulture and design;
- Hold community and partner **takeover events** and use volunteers on site throughout;
- Undertake **robust learning and evaluation to directly inform Phase Two**

no works to second half of viaduct

Event Space

Secret Garden & Partner plots

The Viaduct as Existing

Entrance Zone



♥ RIBA 2030
✦ Climate
💧 Challenge
⚡ Signatory



- ♥ RIBA 2030
- ✈ Climate
- 💧 Challenge
- ⚡ Signatory





CASTLEFIELD
FORUM



Manchester
City of Trees

SCIENCE+
INDUSTRY
MUSEUM

URBAN  WILDERNESS



♥ RIBA 2030
✦ Climate
💧 Challenge
⚡ Signatory



♥ RIBA 2030
✦ Climate
💧 Challenge
⚡ Signatory

Evening delight...



Tip One: Smorgasbord of funding

Traditional Fundraising

- Major donors
- Trusts and Foundations
- Corporate Partnerships
- Grants (applications to relevant government agency or public grant funding schemes; Support for other government funding approaches)
- Public Fundraising

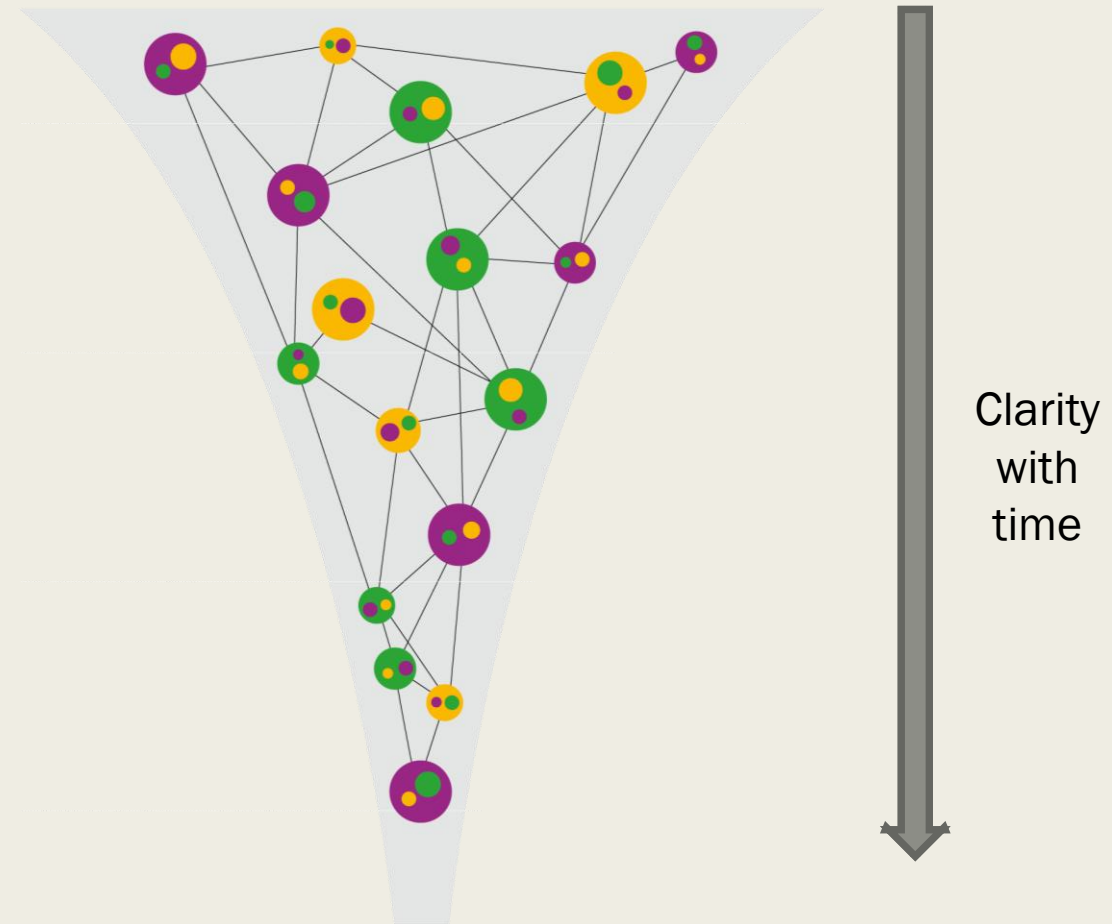
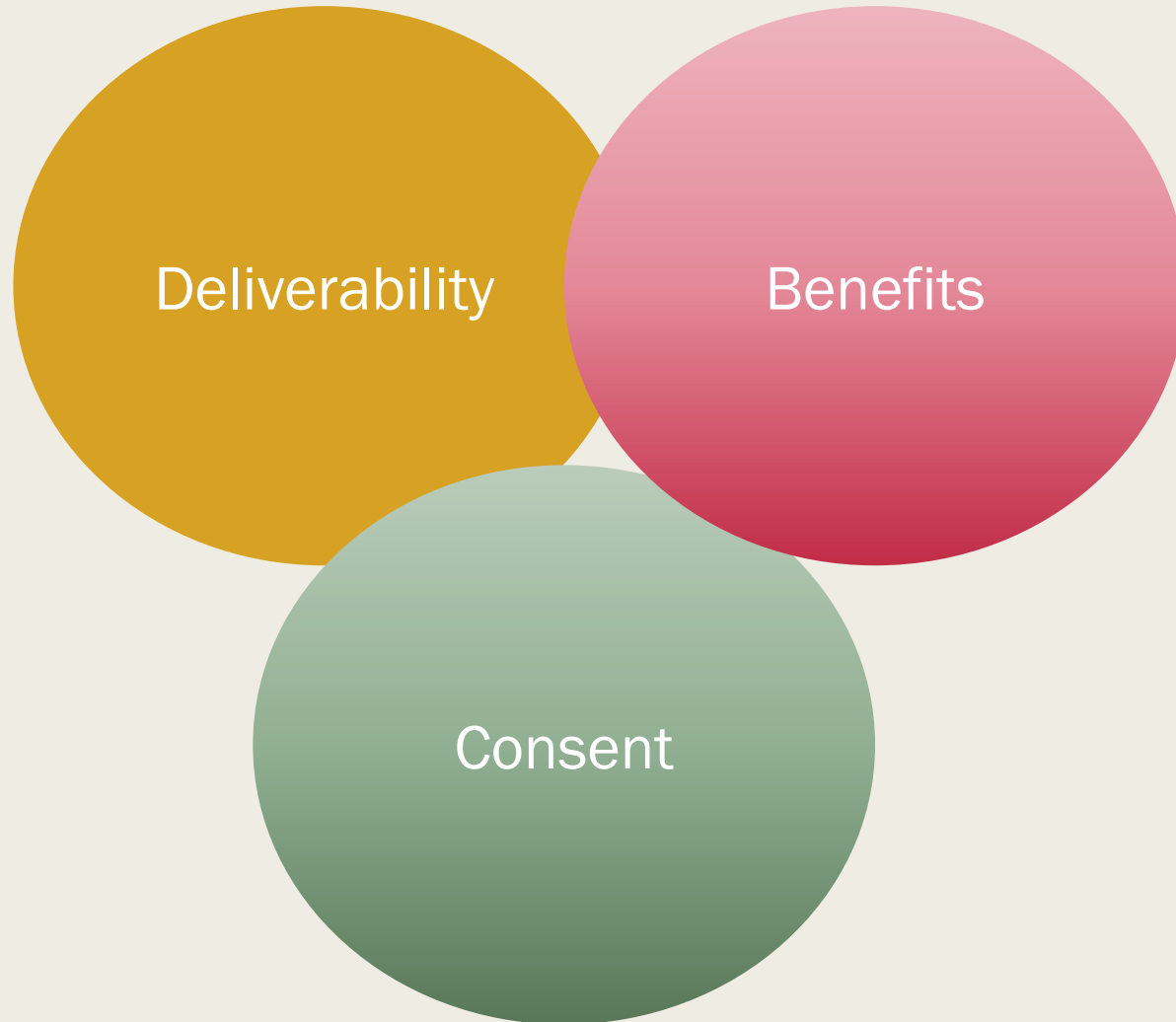
Other Income

- Innovative finance
- Bonds
- Developer finance
- Payment for public goods
- Biodiversity net gain payments
- Revolving Infrastructure Funds
- Structural financing
- Commercialisation

Advocacy & External Affairs

- Policy influencing
- Political intelligence
- Political relationships
- Senior government relationships
- Government Funding: Direct government agency engagement (Pitch to central government & LAs (MCC/GMCA)

Tip Two: Hold the Ambiguity

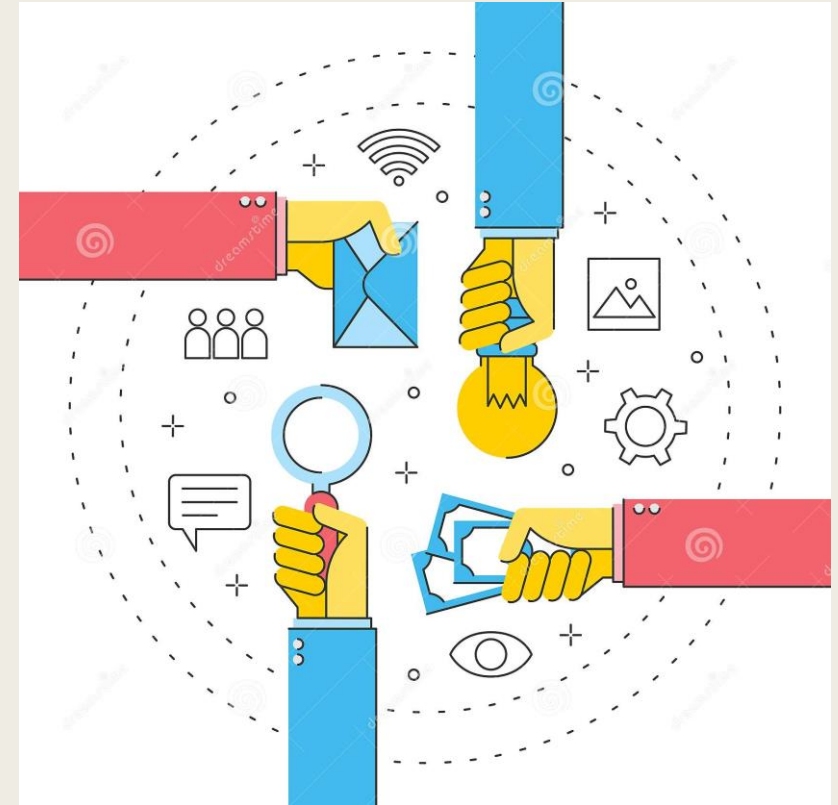


Tip 3: Healthy Partnerships – Quid pro quo



Historical Railways Estate

Our job is to keep safe more than 3,200 former railway structures across the length of Great Britain.



Questions





National
Trust

Contact

Duncan Laird

Head of Urban

duncan.laird@nationaltrust.org.uk

07970 553381

Webpage:

<https://www.nationaltrust.org.uk/castlefield-viaduct>