

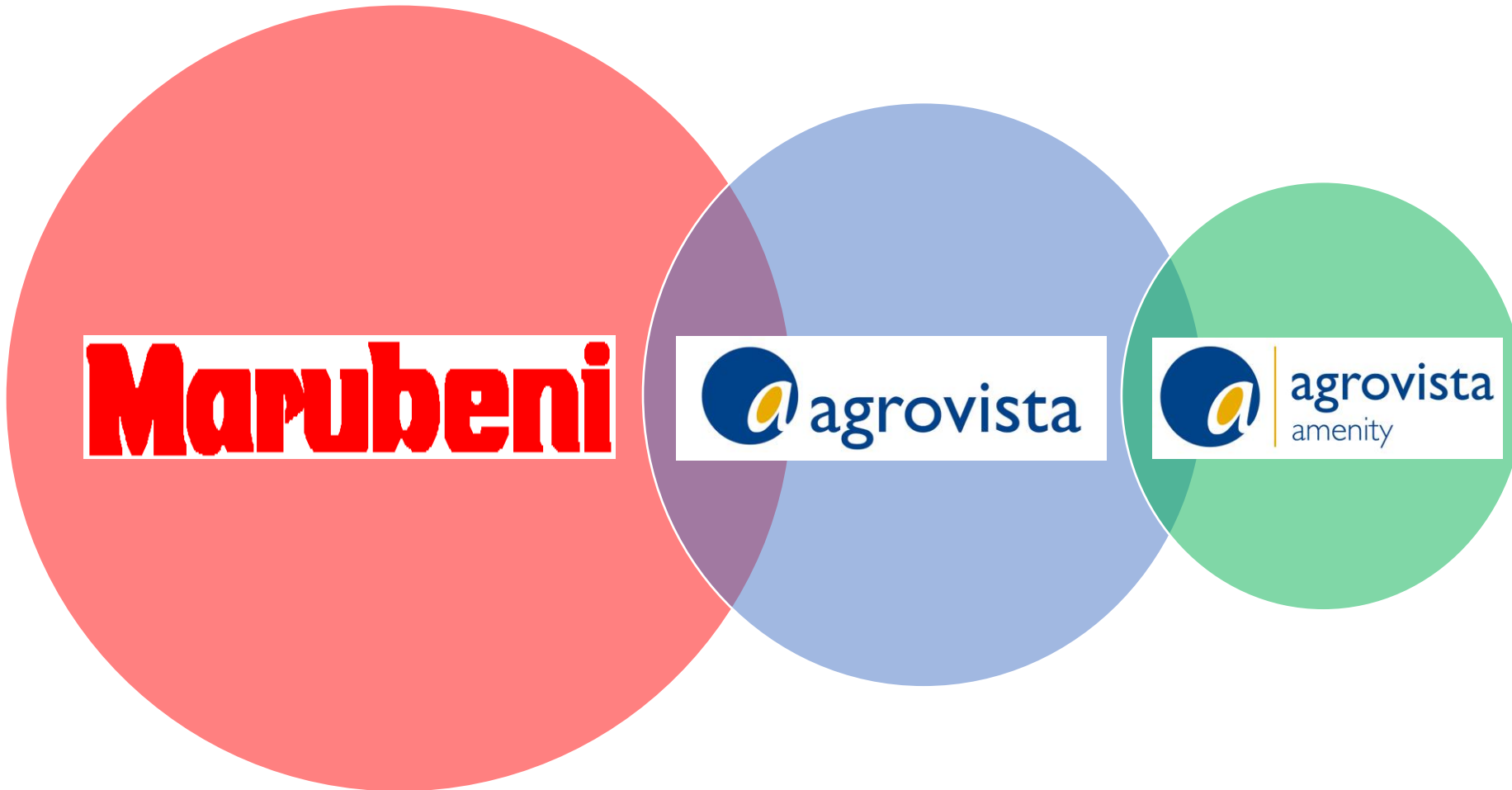


13/03/25

Apse Parks Seminar

*growing
through
innovation*

Corporate Lineage



○ The Marubeni Group by Numbers

Marubeni Group

Number of Bases
136 branches/offices in
67 countries/regions

Number of Consolidated Companies
431

Number of Group Employees
42,882

Company Employees Positioned Overseas
894

*Including Japan, as of April 1, 2019

Helena Agri-Enterprises, LLC

Nationwide Network in the United States.

Approx. **500** locations

Helena is the No.2 retailer of crop protection products, fertilizers, and seeds in the United States.

Volume of Coffee Beans Traded

30% of Coffee Consumed in Japan

Approximately 470,000 tons of coffee are consumed in Japan each year. Marubeni handles approximately 30% of this volume.

* Achievements in 2017

Number of LNG Vessels Owned

16 LNG vessels

Marubeni is currently in possession of 16 out of all operational LNG vessels around the world. The total number of LNG vessels in existence globally is 512 (as of March 2019; this number excludes small model vessels and FSRU).

Copper Equity Volume

150,000 tons

Conducting copper mining business in Chile. Equity volume is one of the largest in Japan.

Number of Aircrafts Owned & Managed

274 aircrafts

Marubeni commenced investment in Aircastle Limited in 2013, and we are now leasing aircraft to 81 airlines in 44 countries worldwide through this company.

Global Olefin Trading Market

Approx. **30%** share

Using specialized tankers, Marubeni has secured approximately 30% of the global olefin trading market.

Net Power Generation Capacity

12,003 MW

As a leading Independent Power Producer (IPP), Marubeni has world class net power generation capacity.

* The total sum of Japan and overseas

Provision of Housing in China

Approx. **11,000** units

Marubeni was one of the first Japanese companies to enter into the Chinese real estate market and has been engaged in such business operations as the development of housing for Chinese homebuyers and complex facilities since 1985.

People Served by Marubeni's Water Business

Approx. **13.5** million people

Marubeni is conducting diversified water projects mainly in Central & South America, Asia, the Middle East, and Europe.

*The target population of a total of 4 concession services this company owns in Europe, South America and Asia.

Afforestation Business Sites

190,000 hectares

2 projects managed in 2 countries with a total of 190,000 hectares (roughly the size of Tokyo).

*Leading site area among Japanese companies

Grain Trading

Industry No.1 Trading volume **70** million tons

Marubeni boasts the top grain trading volume among Japanese companies.

*Includes some double-counted trades
*As of March 2018

Branded house



Corporate level



Business level



Amenity definition



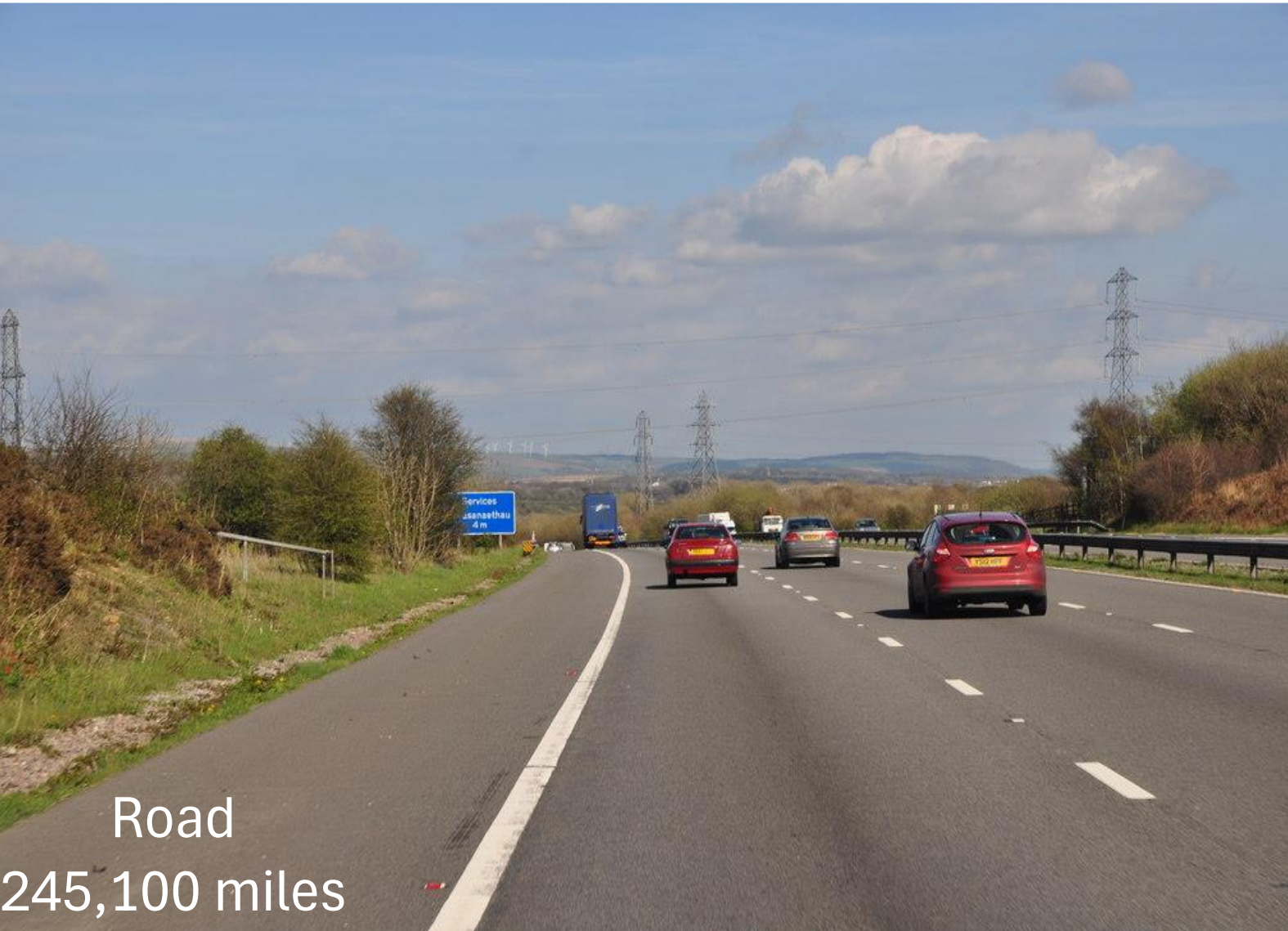
‘Amenity’ is a broad concept and not formally defined in the legislation or procedural guidance.

Town and Country Planning Act 1990

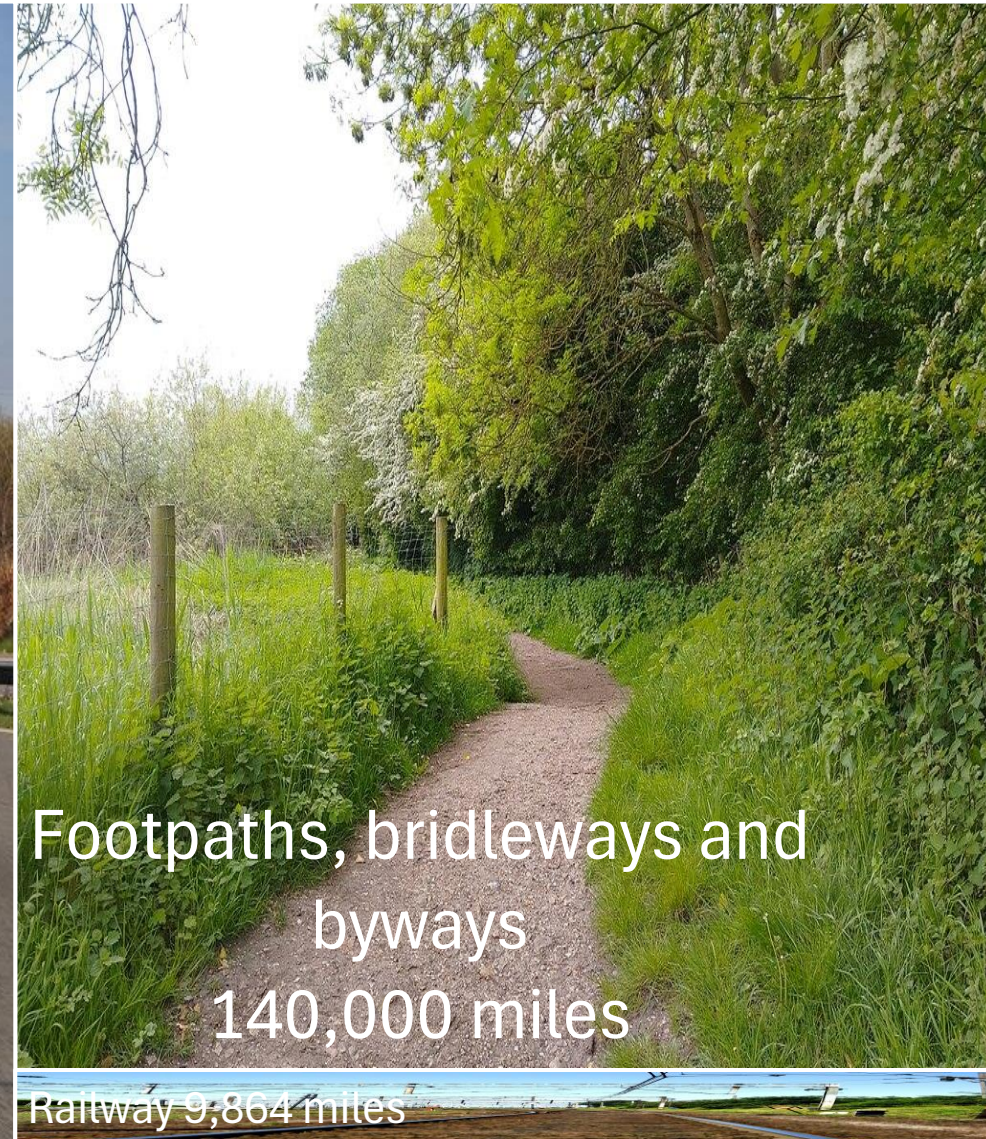
- These areas may be open to public access and used for leisure, recreational and sports activities. Includes
 - All kinds of **non-agricultural land** (including sports and recreational turf of all kinds; road, **path** and railway verges and **embankments**; and airfields)
 - **Public gardens** and **parks** including, for example, National Trust properties
 - Amenity woodland
 - Amenity glasshouse, nursery and retail areas
 - Non-cropped land such as roads, **pavements**, railway tracks and the surrounds of industrial installations
 - Any other similar area, whether or not used exclusively for amenity purposes

HSE Crop Definitions List

Amenity settings – linear features



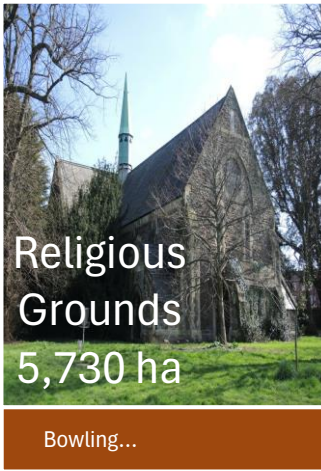
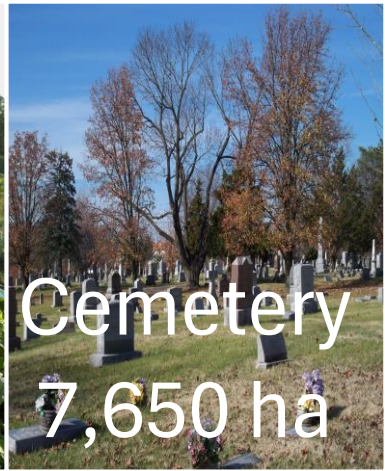
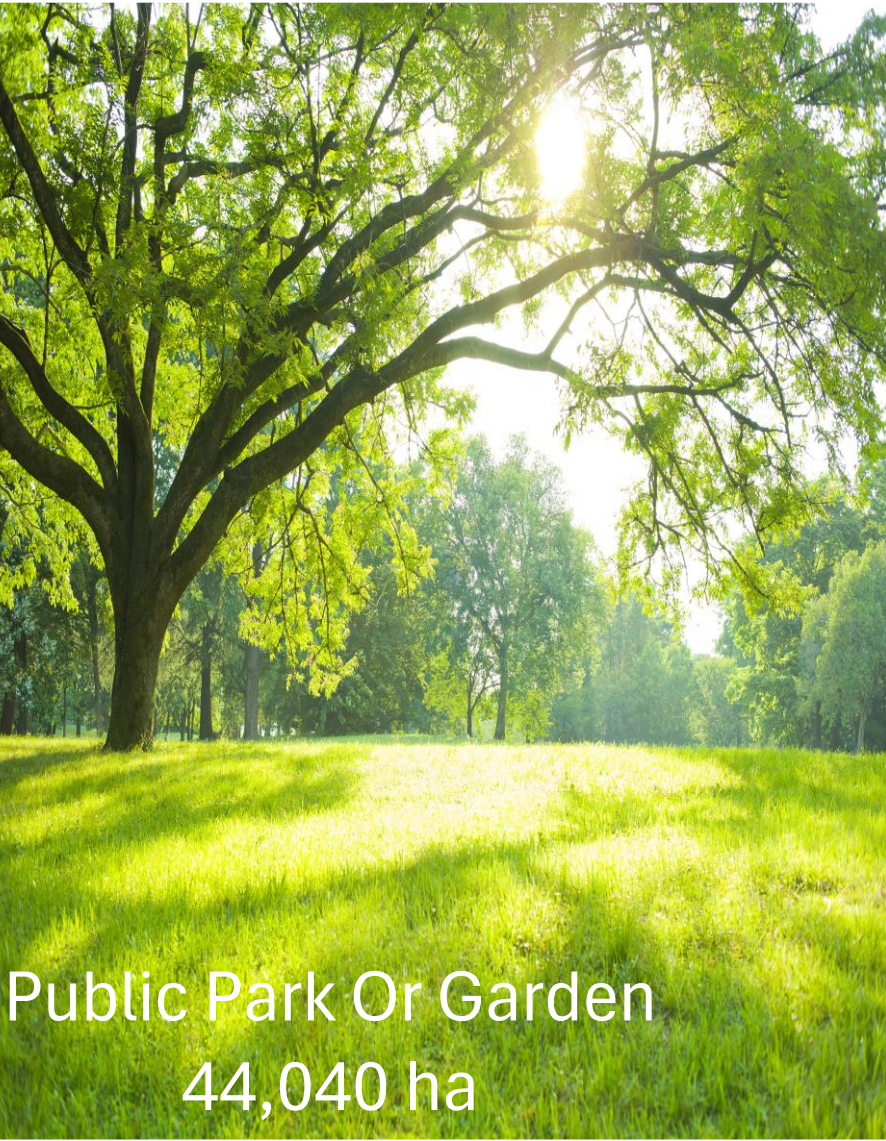
Road
245,100 miles



Footpaths, bridleways and
byways
140,000 miles

Railway 9,864 miles

Amenity settings



Amenity settings



Residential garden
521,872 ha



Public Park Or Garden
44,040 ha



Playing Field
28,430 ha



Golf
Course
16,690 ha



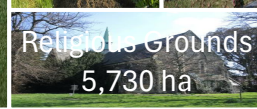
Other
Sports
Facility
15,030 ha



Allotment
s
7,920 ha



Cemete
ry
7,650
ha



Religious Grounds
5,730 ha

B
O

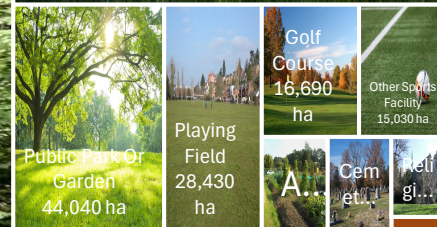
Amenity settings



Woodland and forestry
3,200,000 ha



Residential garden
521,872 ha



Amenity settings compared with agriculture



Agriculture
16,800,000 ha

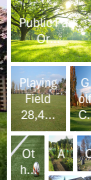
Agriculture
16,800,000 ha



Woodland and forestry
3,200,000 ha



Residential garden
521,872 ha



Public
Or
Playing
Field
28.4...
Or
h...
Public
Or
Playing
Field
28.4...
Or
h...

Amenity settings compared with agriculture



Amenity Settings

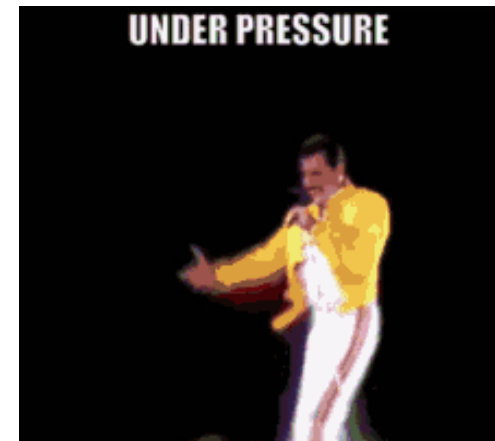
Type of area	UK land coverage
Ag	%
For	%
W	%
Re	%
Other amenity areas	1%



“The lack of resources available for nature recovery in National Parks”.

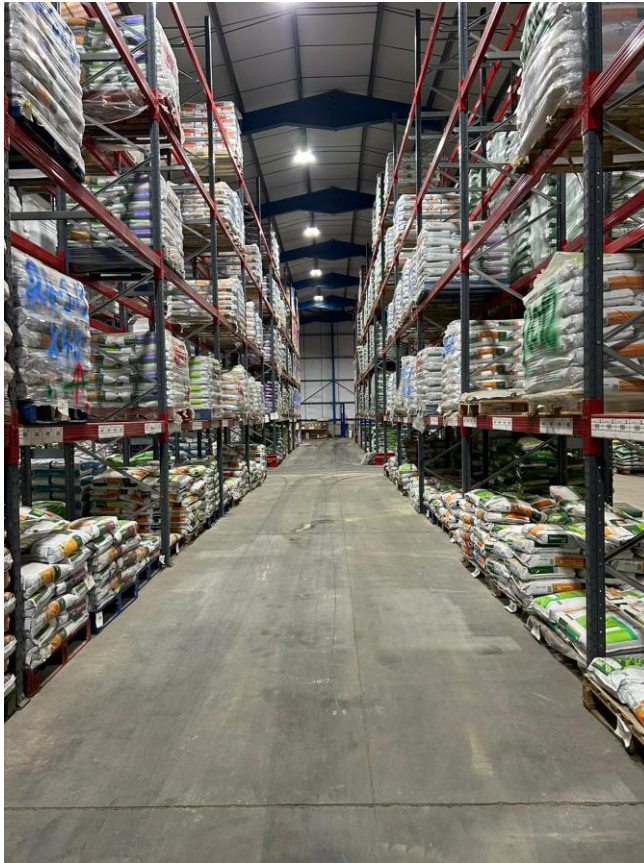
“Budgets have been cut by 40% in real terms over the last decade”.

“The funding available does not match the national role that National Parks are expected to deliver for nature recovery”.



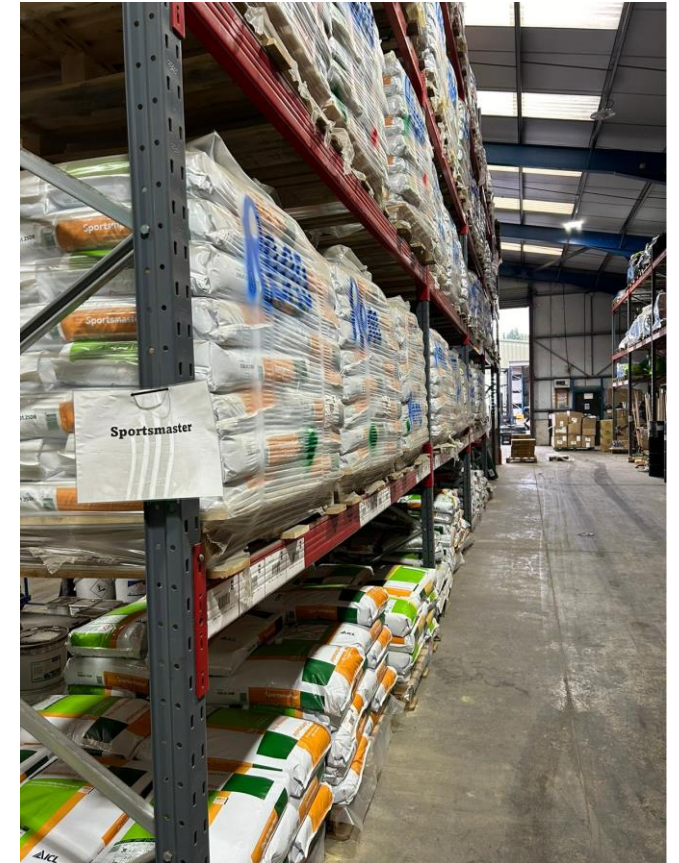
Healthy Parks = Healthy Planet = Healthy People

Agrovista Amenity - Stock and Distribution



- Grass Seed
- Fertiliser
- Herbicides
- PGR's
- Bio-stimulants
- Fungicides
- Wetting Agents
- Tools & Equipment
- Top dressing/topsoil
- Landscaping/planting

Your time is precious, mixed pallet from one warehouse = one delivery



Agrovista Amenity - meeting today's challenges

Logistics and Stock

22 UK depots – 3 Amenity

Over 2000 product lines

14,000 Amenity Pallet Spaces

Own fleet vehicles

Dedicated logistics teams

Dedicated customer support team



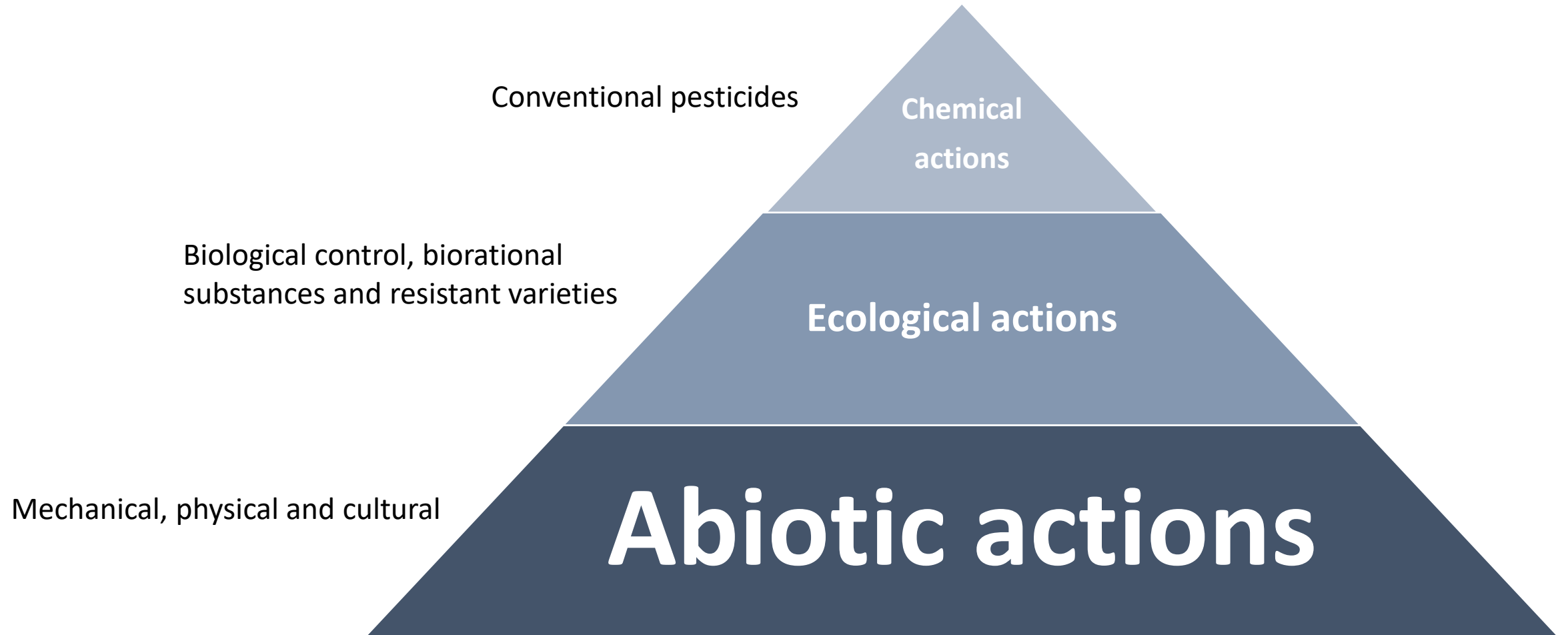
Best practice

Management of amenity environments can affect:

- Aesthetics
- Performance
- Safety

Select the best tool for the job which enables the **desired impact** with the lowest **environmental** and **health** costs.





What are the options end users have?

- QAC's (Quaternary Ammonium Compounds) – DDAC & BAC
- Power/Pressure washing
- Sodium Hypochlorite
- “Chemical free cleaners”
- Brushing
- Doing nothing



Dose Rate:

Dose Rate	Spray Volume	Area Treated
1L	15L	550sqm

GreenClean Pro



GreenClean Pro



Before treatment



After treatment



GreenClean Pro



Before treatment



After treatment



GreenClean⁺ PRO Playgrounds



Environment: Plastic tree guards a plague on new woodland

Millions of tubes designed to protect saplings from animals are polluting forests as they break down

These are 5,000 trees in loads of different biodegradable tree guard options. And they or really became available round about 2019. So we've got ones made of **paper, cardboard polylactic acid, plant starch, cashew nut shell resin, wool** - we've got the whole shebang.

<https://www.woodlandtrust.org.uk/research-and-evidence>

[Tree Guard Research: Plastic-free Alternatives - Woodland Trust](#)

Country and Farming

Plastic tree guards: National Park campaigners call for ban on plastic tree guards

A number of campaigners for National Parks have joined forces for a campaign calling on the use of plastic tree guards to be banned.

The problem with tree guards

Each year in the UK alone, we plant millions of trees through governmental projects, NGOs, organisations, as private landowners, and the general public. Most of these trees will be planted using tree guards, and the number of new trees is only set to increase further in coming years.

<https://www.theguardian.com/environment/oct/mi...>

Microplastics found in human breast milk for the first time

7 Oct 2022 — The breast milk research, published in the journal *Polymers*, found microplastics composed of polyethylene, PVC and polypropylene, which are all ...

Trees should be planted without plastic guards, says UK study

Woodland Trust and National Trust trial sustainable alternatives to plastic protection for millions of saplings



Plastic Tree Guards – Is There Another Way?



New native woodland & the problem of plastic tree guards

Plastic in the environment is a problem

It's just one of the many sobering climate emergency issues we are currently facing – and plastic tree guards are one of the culprits.

YOU MIGHT ALSO LIKE

[Hill farming grants programme extended](#) →

Reducing plastic



The sustainable alternative

Key Benefits of Tree Hugger® Products:

- **Plastic-Free:** Completely biodegradable, eliminating microplastic pollution.
- **Encourages Growth:** The unique visible light spectrum within the guards promotes tree development.
- **Durable:** A lifespan of at least five years ensures long-term protection.
- **Animal Protection:** Guards are strong enough to resist prying animals, including voles.
- **Ease of Use:** No removal or recycling logistics, saving time and costs.




- Free online courses





Accreditation
Lantra is accredited by the British Standards Institution (BSI) for ISO 9001:2015 and ISMS 27001:2013 for Skills+
Lantra is also recognised and accredited as an Investor in People Employer.

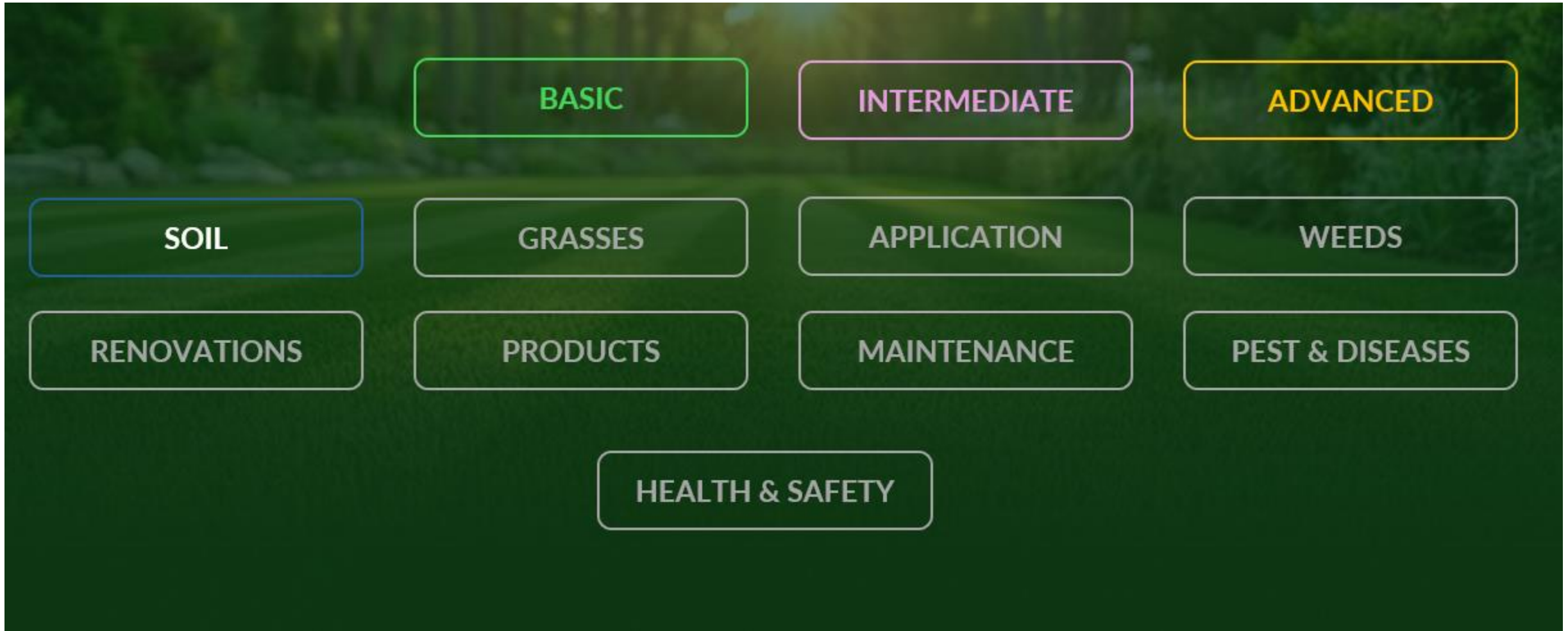
- Over 11,000 CPD points
- Stewardship/Compliance
- Continue to add content



Knowledge Products Weather BASIS Educational Partners About Us



 <p>Frost</p>	 <p>Grass species</p>	 <p>Knapsack calibration</p>	 <p>Managing moss</p>
 <p>Nitrogen efficiency</p>	 <p>Seeds Needs</p>	 <p>Soil pH and nutrients</p>	 <p>Thatch</p>



Benefits for employee

- Opportunities for career advancement
- Personal development
- Proficiency
- Confidence
- Recognition
- Adapt outdated skills
- In touch with changes in legislation

Benefits for employer

- Professional staff
- Proficiency
- Efficiency
- Confidence in staff ability
- Updated and informed staff
- Motivated team
- Valued team

Thank you for listening

昭和三十九年
三月
市川忍

和 新 正

“Fairness, **Innovation** and Harmony”



Any questions

Thank you

For more information please contact:

ed.smith@amenity.co.uk



www.agrovista.co.uk

    @agrovistaUK