



#MEAAction

Tackling a Biodiversity Emergency MEA Style

APSE NI Event - Net Zero NI - Galgorm, Ballymena - Tuesday 6 June 2023

Elaine Smith, Climate and Sustainability Manager
Vanessa Postle, Sustainable Development Officer (Parks)



**Mid & East
Antrim**
Borough Council



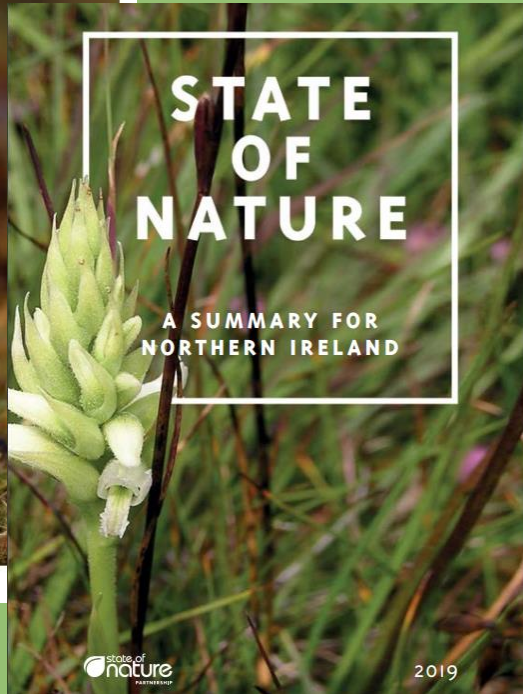
Biodiversity Emergency

NI is the 12th worst performing country for biodiversity loss

Nature is being destroyed across the UK, warns report



Concern: the curlew population has gone down by more than 80% in NI since 1987



In Northern Ireland:

- We have lost more than 80% of the curlew population since 1987
- 11% of all wildlife is now threatened with extinction.

Across the UK, 41% of species assessed have decreased over the past 10 years.



Mid & East
Antrim
Borough Council



Climate & Sustainability Action Plan



Goals:

- 30% reduction in council operation emissions by 2030
- Decarbonize small vehicles in our fleet by 2030
- Council operation emissions to net zero by 2040
- Supporting the borough to net zero by 2050
- Climate resilience in our buildings, public spaces and infrastructure



Climate & Sustainability Action Plan



Key themes:

- Good governance and community leadership
- Protecting the environment
- Economy
- Transport
- Resource Management
- Buildings and energy

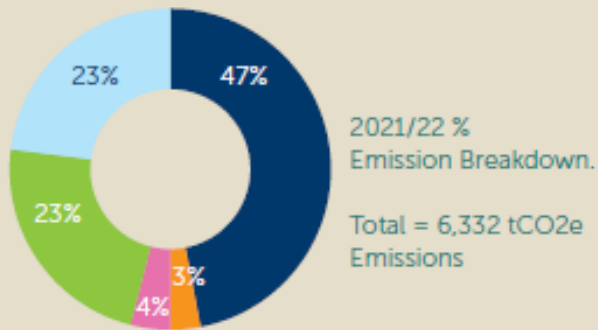
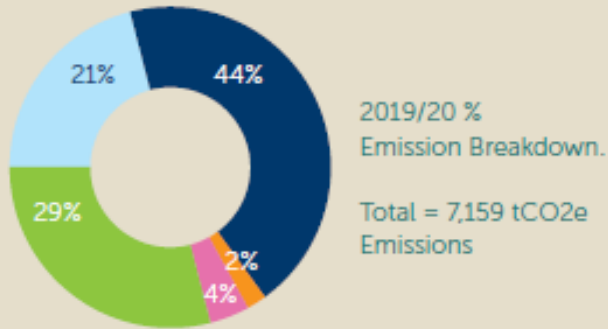


Importance of data

Council's baseline emissions

2019/20 baseline year:
2021/22:

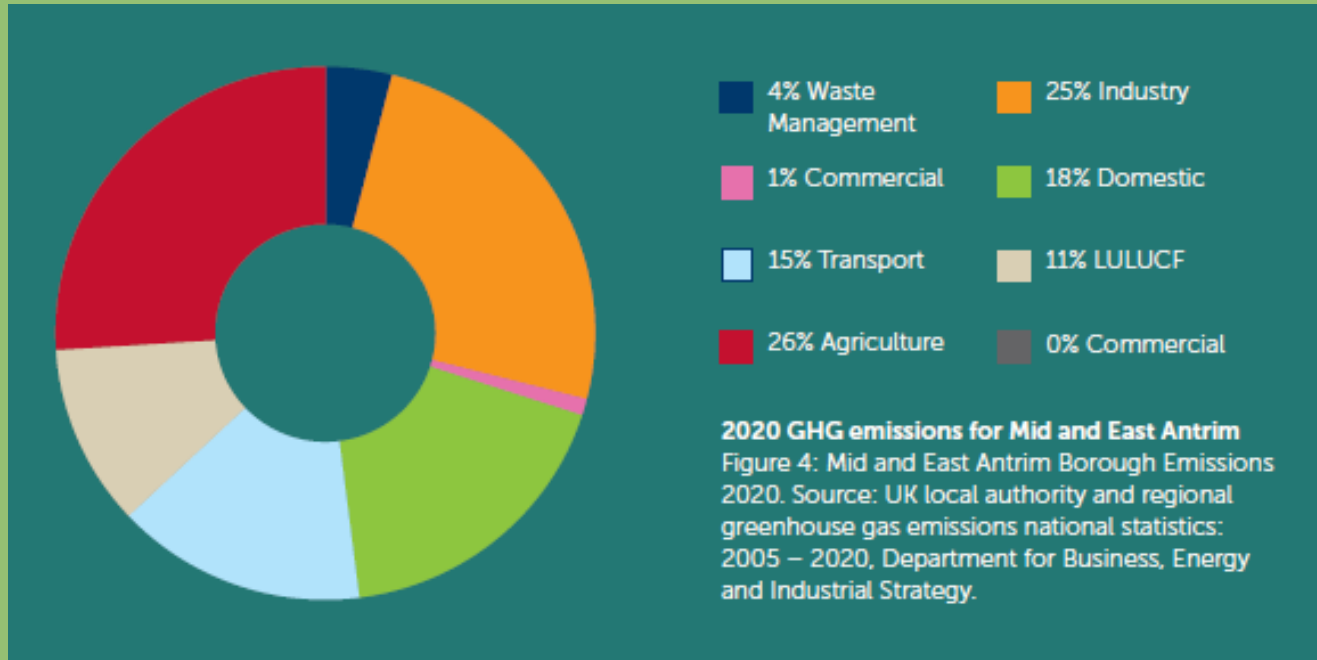
7,159 tCO₂e
6,332 tCO₂e



■ Piped Gas ■ LPG ■ Oil
■ Fuel (Fleet) ■ Electricity



Wider borough



Borough baseline emissions

1,634.3 ktCO₂e (2020)

The largest source of emissions is agriculture, totalling 429.7 ktCO₂e and the second largest is industrial at 402 ktCO₂e



Nature based solutions



Our natural capital:

- supports biodiversity
- provides valued space for nature and our residents
- removes CO₂ from the atmosphere and helps to reduce Council's overall emissions to achieve net zero

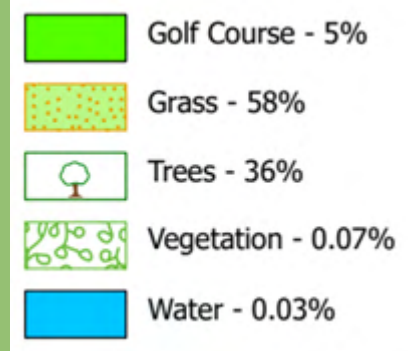
How can we measure this?



Mid & East
Antrim
Borough Council



Measuring Our Green Spaces



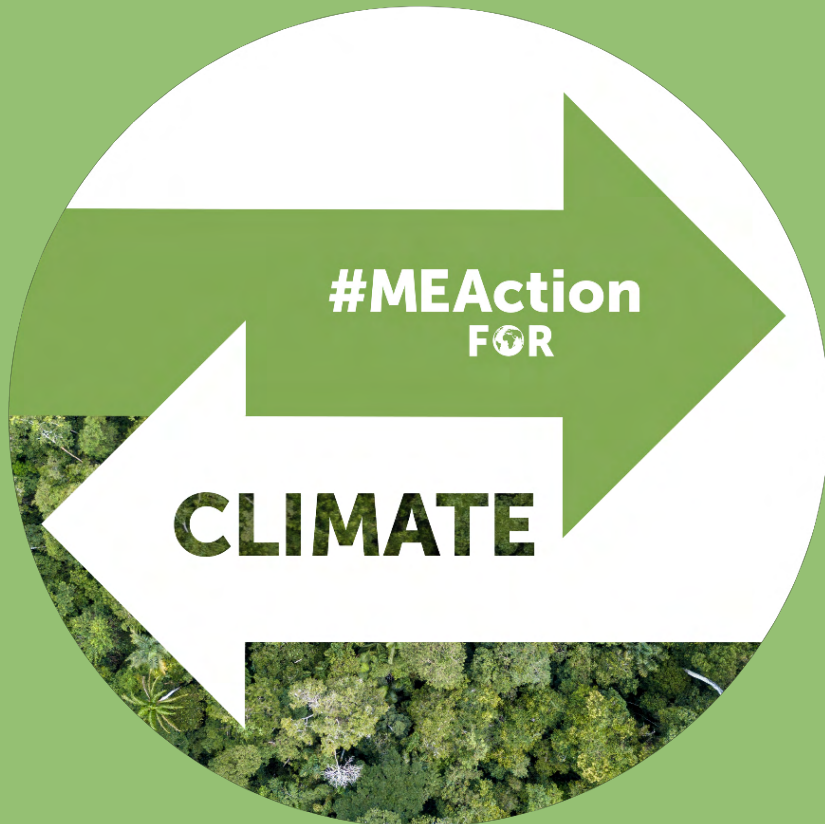
Worked closely with Council's GIS officer and parks development team to identify:

- 506 hectares of green space across the borough and 483 hectares of foreshore.
- Used recent research on carbon storage and sequestration (2021)
- Layered data from the Woodland Trust

Our green spaces capture in excess of 1000 tonnes of CO₂ per year.



Current Projects



- Peatland Restoration Project
- Woodland Projects
- Native Oyster Nursery
- Sustainable Food Place
- A pilot carbon offsetting scheme



Mid & East
Antrim
Borough Council

Peatland Restoration Project

**Peatlands cover only about 3%
of the earth's land**

**Around 25% of NI is covered by
peat**



Keeran Moss

30acre (12.1ha) site outside Carrickfergus

- Enhance local biodiversity and raise awareness and investment in site
- Protect and encourage priority species with habitat management
- Improve carbon capture/storage potential



Climate Canopy

Planting 400,000 trees across
the borough by 2024

2022/23: 38,500 trees planted.

Improves air quality

Provides food and shelter for
wildlife

Promotes health & wellbeing



Native Oyster Nursery at Glenarm Marina

Over 800 mature native oysters

Once in place oyster larvae is
released into the Lough

Improves the clarity and quality
of the water through filtration



Sustainable Food and Community Fridges



- 712 Ton of CO₂ emissions saved
- 223 Ton of food collected from retailers



#MEAction
ON
WASTE



Mid & East
Antrim
Borough Council

i-Tree Canopy Data Project

The data helps give an estimate of tree cover in the area and translates this into the average benefits that this tree cover provides

- Carbon stored/Carbon sequestered annually
- Air quality benefits
- Hydrological benefits (reducing the risk of flooding)

This can be overlaid with other datasets such as habitat networks to prioritise areas for further planting such as connecting fragmented habitats and buffering ancient woodland.



**#MEAAction
FOR**

CLIMATE

Thank you

For further info:

vanessa.postle@midandeantrim.gov.uk

elaine.smith@midandeantrim.gov.uk



**Mid & East
Antrim**
Borough Council